

2709

A GEOCHEMICAL & LINECUTTING

REPORT ON

THE HED GROUP

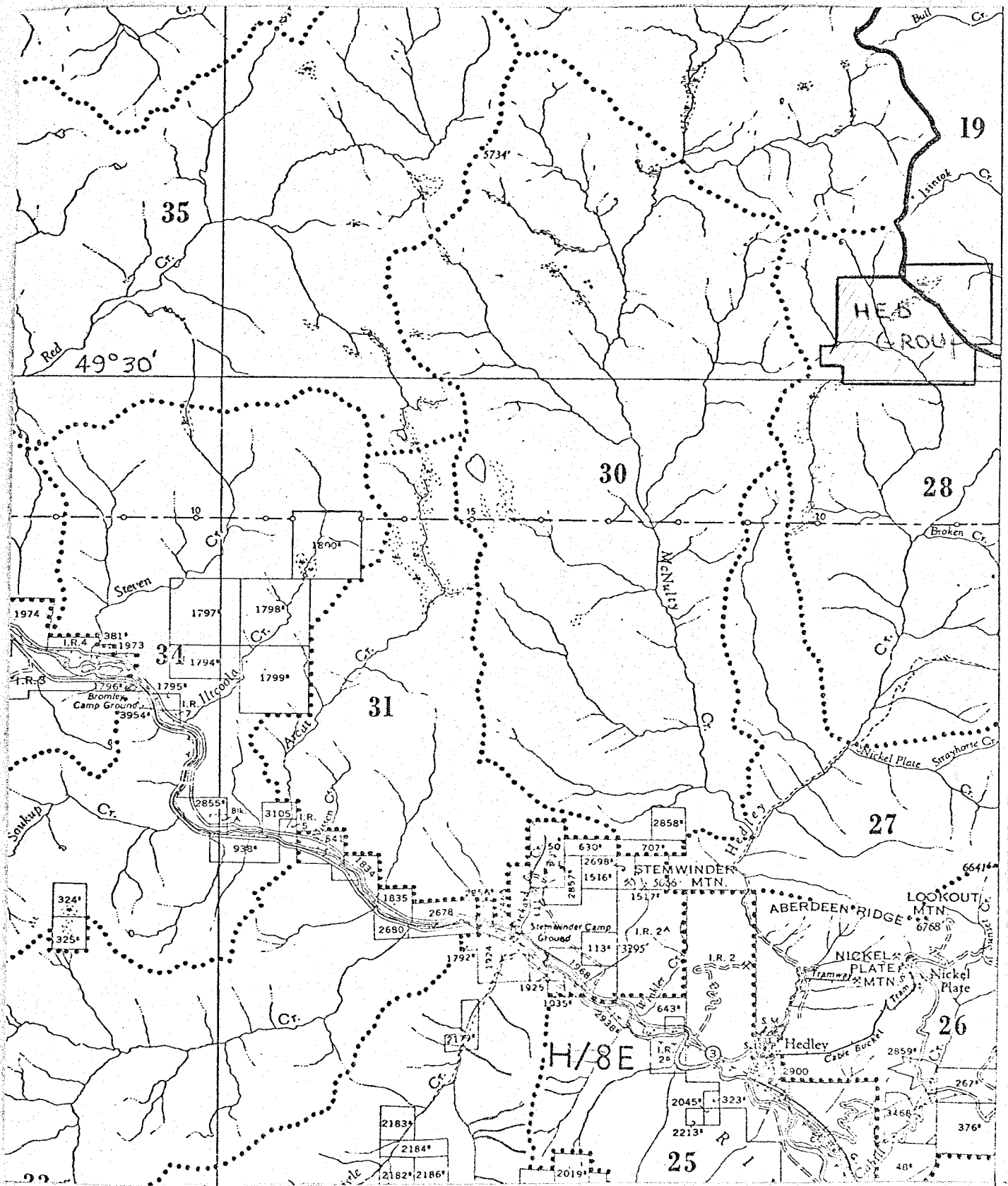
PROPERTY: HED GROUP  
LOCATION: 12 MILES NE OF HEDLEY, B.C.  
49°22' 120°00' 92H/9E  
MINING DIVISION: OSOYOUS  
PROVINCE: BRITISH COLUMBIA  
REPORT BY: Rod Macrae, P.Eng.  
J. Barakso, B.S.F., M.Sc.  
CLAIM OWNER: Anaconda American Brass Ltd.  
DATE OF WORK: July 11 - August 24, 1970

Department of  
Mines and Petroleum Resources  
ASSESSMENT REPORT  
NO. 2709 MAP

CONTENTS

	Page No.
Introduction.....	1
Location and Accessibility.....	1
Purpose of the Geochemical Survey.....	1
General Geology of the Area.....	1
Method of Sampling.....	1
Analytical Methods.....	2
Results of the Geochemical Survey.....	2
Statement of Qualifications - J.J. Barakso.....	3
Appendix I.....	4
Appendix II.....	5

#1 CLAIM MAP  
#2 GEOCHEMICAL MAP



82 E/12  
 92 + 14e  
 HEDLEY CREEK CLAIMS

12000

## INTRODUCTION

The Hed Group consists of the Hed 1-10, Hed 17-26, Hed 33, Hed 35, Hed 37, Hed 39, Hed 40, Hed 49-55. Record numbers - 25887-25896, 25904-25913, 25919, 25921, 25923, 25925, 25926, 26960-26966.

A grid system of chain and compass lines were cut using a North-South base line and East-West cross lines at 800' intervals. The field work was under the general supervision of G. Nordin, Geologist and Rod Macrae, P. Eng.

## LOCATION AND ACCESSIBILITY

The Hed Group is located at the headwaters of Hedley Creek approximately 12 miles N-E of Hedley. Access to the Property is by helicopter as there are no roads beyond Isintok Lake about 4 miles to the north-east.

## PURPOSE OF THE GEOCHEMICAL SURVEY

Several geochemical samples indicated moderately anomalous amounts of copper and molybdenum on the claimed area. After the stream sediment follow up work a grid soil sampling was carried out to outline possible target areas where considerable overburden exists.

## GENERAL GEOLOGY OF THE AREA

The majority of outcrops exist on the western half of the claims and indicate the area is underlain by bedrock of the coast range intrusions, mainly pink coarse-grained siliceous granite and granodiorite with aplite dykes.

## METHOD OF SAMPLING

The stream sediment samples were taken approximately 400' apart and stations were marked by flagging.

The soil sample grid was placed by chain and compass control lines. The Base Line direction is true North-south and the line spacing is 800' apart as shown on the enclosed map. Sample stations were established at every 200' by picket and flagging.

At each station a soil sample was collected from a pit or hole, which was dug with a shovel and grubhoe to the depth of 5-19 inches depending on the soil development to obtain the sample from the "B" horizon with the exception of swampy areas where Ah horizons were used for sampling. At each sample site enough sample was collected to supply at least 5 grams of minus 80 mesh fraction for analysis.

This sampling also included 25 rock geochemical samples from outcrops. These samples were collected as grab rock chip samples for geochemical analysis.

ANALYTICAL METHODS

Samples were processed in the Anaconda American Brass Geochemical Laboratories at Britannia Beach.

After drying the samples at 95°C they had been screened with an 80 mesh screen to obtain the minus 80 mesh fraction for analysis. The rock samples were crushed by jaw crusher and pulverized by ceramic plated pulverizer.

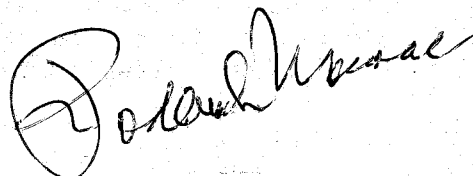
One gram weight of the samples was digested with HNO<sub>3</sub> and HCCO<sub>4</sub> mixture for 5 hours and after dilution with water to standard volume the sample solutions were analysed by Atomic Absorption spectrophotometers. Copper, zinc, lead and silver were analysed using the C<sub>2</sub>H<sub>2</sub>-Air flame combination but the molybdenum determination was carried out by C<sub>2</sub>H<sub>2</sub>-N<sub>2</sub>O gas mixture directly on the same sample solutions.

RESULTS OF THE GEOCHEMICAL SURVEY

The enclosed 1" = 400' geochemical map indicates the results of the survey. From the values indicated on the map, Copper values above 40 ppm and molybdenum values above 6 ppm along with 0.7 ppm silver are considered to be significant. The zinc values ranging from 6-92 ppm and lead values from 4-24 ppm have not been considered to be economically significant from this area.

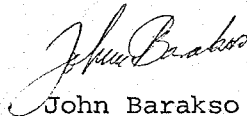
The suggested anomalous area warrants further geologic mapping and geophysical work along with more geochemical surveys.

  
J. Barakso



STATEMENT OF QUALIFICATIONS OF J.J. BARAKSO, GEOCHEMIST

- 1953 Diploma: Hydrotechnical Institute, Budapest, Hungary
- 1959 B.S.F.: Major in Forest Soils, University of B.C.
- 1967 M.SC.: Soil-and Geo-chemistry, University of B.C.
- 1960-61 Assistant Geochemist, Kennco Explorations (Western) Ltd.  
Vancouver, B.C.
- 1961-63 Geochemist, Kennco Explorations (Western) Ltd.  
Vancouver, B.C.
- 1963-69 Chief Geochemist, Kennco Explorations (Western) Ltd.  
Vancouver, B.C.
- 1969- Chief Geochemist, Anaconda American Brass Ltd.  
Britannia Beach, B.C.

  
John Barakso

## APPENDIX I

## ASSESSMENT DETAIL - GEOCHEMICAL &amp; LINE CUTTING

PROPERTY: HED GROUP  
 OWNER: Anaconda American Brass Ltd.  
 MINING DIVISION: OSOYOUS  
 PROVINCE: BRITISH COLUMBIA  
 DATE OF WORK: July 11 - August 24, 1970  
 LOCATION: 12 miles NE of Hedley, 49°22'-120°00'  
 TYPE OF SURVEY: Geochem  
 OPERATING FIELD MAN SHIFTS: 169  
 " " CREW " : 44  
 SUPERVISORY SHIFTS: 8  
 ACCOUNTING SHIFTS: 1  
 MAP COMPILATION SHIFTS: 1  
 DRAFTING & TYPING SHIFTS: 3

PERSONNEL EMPLOYED ON SURVEY

SUPERVISION: Rod Macrae, Gary Nordin  
 MAP COMPILATION: J. Vinnell  
 ACCOUNTING: J. Vinnell  
 DRAFTING: J. Vinnell  
 TYPING: M.E. Deyelle

SOIL SAMPLING

<u>NAME</u>	<u>RATE</u>	<u>DAYS</u>	<u>DATE</u>	<u>WAGE &amp; FRINGE (11%)</u>
P. Thompson	500/mo	3	Aug. 22-24/70	\$ 63.82
N. Osborne	425/mo	3	" "	54.26
G. Nordin	450/mo	7	Aug. 11-24/70	134.37
H. Jenak	450/mo	3	Aug. 22-24/70	57.44
M. Honish	450/mo	3	" "	57.44
K. Yeung	425/mo	4	Aug. 11-16/70	72.18
				\$ 439.51

LINE CUTTING

G. Nordin	450/mo	16	July 11-Aug. 21/70	307.21
K. Yeung	425/mo	16	" "	290.38
R. Johnston	20/day	16	Jul 7 31-Aug. 15/70	355.20
E. Hogg	25/day	10	July 31-Aug. 9/70	277.50
R. Nixon	20/day	7	Aug. 9-15/70	155.40
P. Thompson	500/mo	4	Aug. 18-21/70	85.38
J. Percheson	425/mo	2	Aug. 18&19/70	36.30
N. Osborne	425/mo	4	Aug. 18-21/70	72.59
H. Jenak	450/mo	4	Aug. 18-21/70	76.81
M. Honish	450/mo	1	August 21/70	19.20
				\$ 1675.97

NOTE: Salaries based on 26 day/month.

Declared before me at the City  
 of Vancouver, in the  
 Province of British Columbia, this 5  
 day of November 1970, A.D.

## APPENDIX II - GEOCHEM

## Field Crew:

Salaries (as per appendix I)	439.51
Room & Board @ 6.48/man/day	149.04
Helicopter service	232.63
Vehicle (on emergency standby)	61.20
Communications (Radio, Telephone)	7.95
Supervision \$35/day + 11% fringes	<u>77.70</u>
<b>Total</b>	<b>\$ 968.03</b>

## Laboratory:

Analysis - 662 samples @ 2.00 ea.	<u>1324.00</u>
<b>Total</b>	<b>\$ 2292.03</b>

Total money applicable to group =	
<u>371 No. Samples on group</u> x 2292.03 =	1283.54
662 Total Samples Taken	

## APPENDIX II - LINECUTTING

## Field Crew:

Salaries (as per appendix I)	1675.97
Room & Board @ 6.48/man/day	518.40
Helicopter service	809.06
Vehicle (on emergency standby)	212.85
Communications (Radio - Telephone)	27.67
Supervision \$35/day + 11% fringe	<u>218.90</u>
<b>Total</b>	<b>\$ 3462.85</b>

Total money applicable to group =	
<u>61000 Line feet inside claim group</u> x 3462.85 =	3213.52
65700 Total Line Feet	=====

Total appendix II - Geochem & Line Cutting applicable = \$ 4497.06

## Interpretation &amp; Report preparation

Map compilation @ \$30/day & fringes - 11% =	33.30
Drafting @ \$30/day + fringes @ 11% =	66.60
Accounting @ \$30/day + fringes @ 11% =	33.30
Typing @ 25/day + fringes @ 11% =	<u>27.75</u>
<b>Total</b>	<b>\$ 160.95</b>

Total of all costs applicable to group = \$ 4658.01

Declared before me at the city  
of Vancouver, in the  
Province of British Columbia, this 5  
day of November 1979 A.D.

*Jan F. [Signature]*  
A Commissioner for taking Affidavits within British Columbia  
A Notary Public in and for the Province of British Columbia

Sub-mining Recorder





**LEGEND**

Cu. ppm.	Mo. ppm.
○ 41 199	○ 7 39
○ 199	○ > 39
□ 41 199	□ 7 39
□ 199	□ > 39
◇ 35 150	◇ 4 19
◇ 150	◇ > 19

Cu-Mo THRESHOLD ZONES ———  
 Cu-Mo ANOMALOUS ZONES ———

ANACONDA AMERICAN BRASS, LTD. WESTERN EXPLORATION DIVISION

82 E/12  
HEDLEY CREEK CLAIMS

**GEOCHEMICAL MAP**

○ Stream Sample  
 □ Soil Sample  
 ◇ Rock Sample  
 △ Swamp Sample

O Mo ppm.  
 □ Cu ppm.  
 △ Ppm.  
 ◇ Ppm.

Scale: 1 inch = 400 feet

TO ACCOMPANY GEOCHEMICAL REPORT  
BY  
J.J. BARAKSO B.S.F., M.Sc. *J. Barakso*  
R. MACRAE P. Eng.

DATED: OCTOBER 30, 1970

2709 M-2