

2737

part 2
of 2



MADE IN CANADA

No. 19-4P PARTITION ENVELOPE

11 3/4 x 9 1/2 Inches — 3 1/2 Inch Exp.

119° 45' W

50° 00' N



2737 M-1

L10-60W
 L11-54W
 L12-64W
 L13-64W
 L14-64W
 L15-64W
 L16-64W
 L17-64W
 L18-64W
 L19-64W
 L20-64W
 L21-64W
 L22-64W
 L23-64W
 L24-64W
 L25-64W
 L26-64W
 L27-64W
 L28-64W
 L29-64W
 L30-64W
 L31-64W
 L32-64W
 L33-64W
 L34-64W
 L35-64W
 L36-64W
 L37-64W
 L38-64W
 L39-64W
 L40-64W
 L41-64W
 L42-64W
 L43-64W
 L44-64W
 L45-64W
 L46-64W
 L47-64W
 L48-64W
 L49-64W
 L50-64W
 L51-64W
 L52-64W
 L53-64W
 L54-64W
 L55-64W
 L56-64W
 L57-64W
 L58-64W
 L59-64W
 L60-64W
 L61-64W
 L62-64W
 L63-64W
 L64-64W
 L65-64W
 L66-64W
 L67-64W
 L68-64W
 L69-64W
 L70-64W
 L71-64W
 L72-64W
 L73-64W
 L74-64W
 L75-64W
 L76-64W
 L77-64W
 L78-64W
 L79-64W
 L80-64W
 L81-64W
 L82-64W
 L83-64W
 L84-64W
 L85-64W
 L86-64W
 L87-64W
 L88-64W
 L89-64W
 L90-64W
 L91-64W
 L92-64W
 L93-64W
 L94-64W
 L95-64W
 L96-64W
 L97-64W
 L98-64W
 L99-64W
 L100-64W
 L101-64W
 L102-64W
 L103-64W
 L104-64W
 L105-64W
 L106-64W
 L107-64W
 L108-64W
 L109-64W
 L110-64W
 L111-64W
 L112-64W
 L113-64W
 L114-64W
 L115-64W
 L116-64W
 L117-64W
 L118-64W
 L119-64W
 L120-64W
 L121-64W
 L122-64W
 L123-64W
 L124-64W
 L125-64W
 L126-64W
 L127-64W

Department of
 Mines and Petroleum Resources
 ASSESSMENT REPORT
 NO. 2737 MAP #1

CLAIM LOCATION MAP
 MAB SURVEY LINKS
 ROY GROUP
 KELOWNA AREA B.C.
 MAB LINES - - - - -
 200' STATIONS
 W.A. McElland
 SCALE 1" = 1500'



2737 M-2

Department of
Mines and Petroleum Resources
ASSESSMENT REPORT
NO. 2737 M-2

MAG READINGS
ROY GROUP
KELLOWNA AREA BC
SCALE 1" = 300'
W.A. McMillan



Department of
 Mines and Petroleum Resources
 ASSESSMENT REPORT
 NO. 2737 M-3

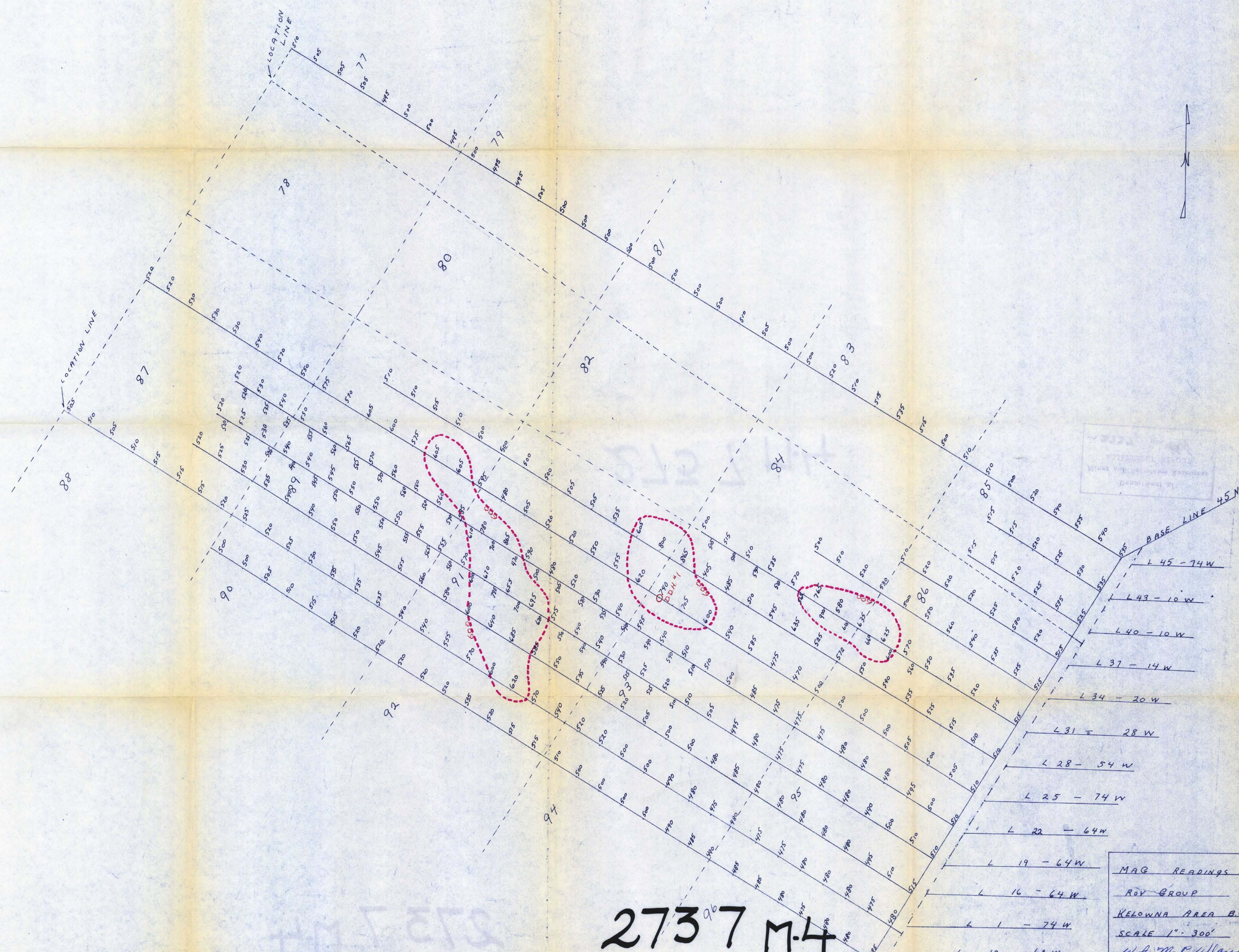
2737 M-3

MAG. READINGS
 RAY GROUP
 KELOWNA AREA B.C.
 SCALE 1" = 300'
 W.A. McCallum

L 25-74 W
 L 22-64 W
 L 19-64 W
 L 16-64 W
 L 1-74 W
 L 10-60 W

L 2-74 W
 L 8-74 W

L 3-120 W



VICTORIA
 WILLIAM SMITH & COMPANY
 110 BROADWAY
 VANCOUVER, B.C.

- BASE LINE 45 N
- L 45 - 74 W
- L 43 - 10 W
- L 40 - 10 W
- L 37 - 14 W
- L 34 - 20 W
- L 31 - 28 W
- L 28 - 54 W
- L 25 - 74 W
- L 22 - 64 W
- L 19 - 64 W
- L 16 - 64 W
- L 1 - 74 W
- L 10 - 60 W

MAG READINGS
 ROV GROUP
 KELOWNA AREA BC
 SCALE 1" = 300'
 W.A. M. Bullard

2737 M-4

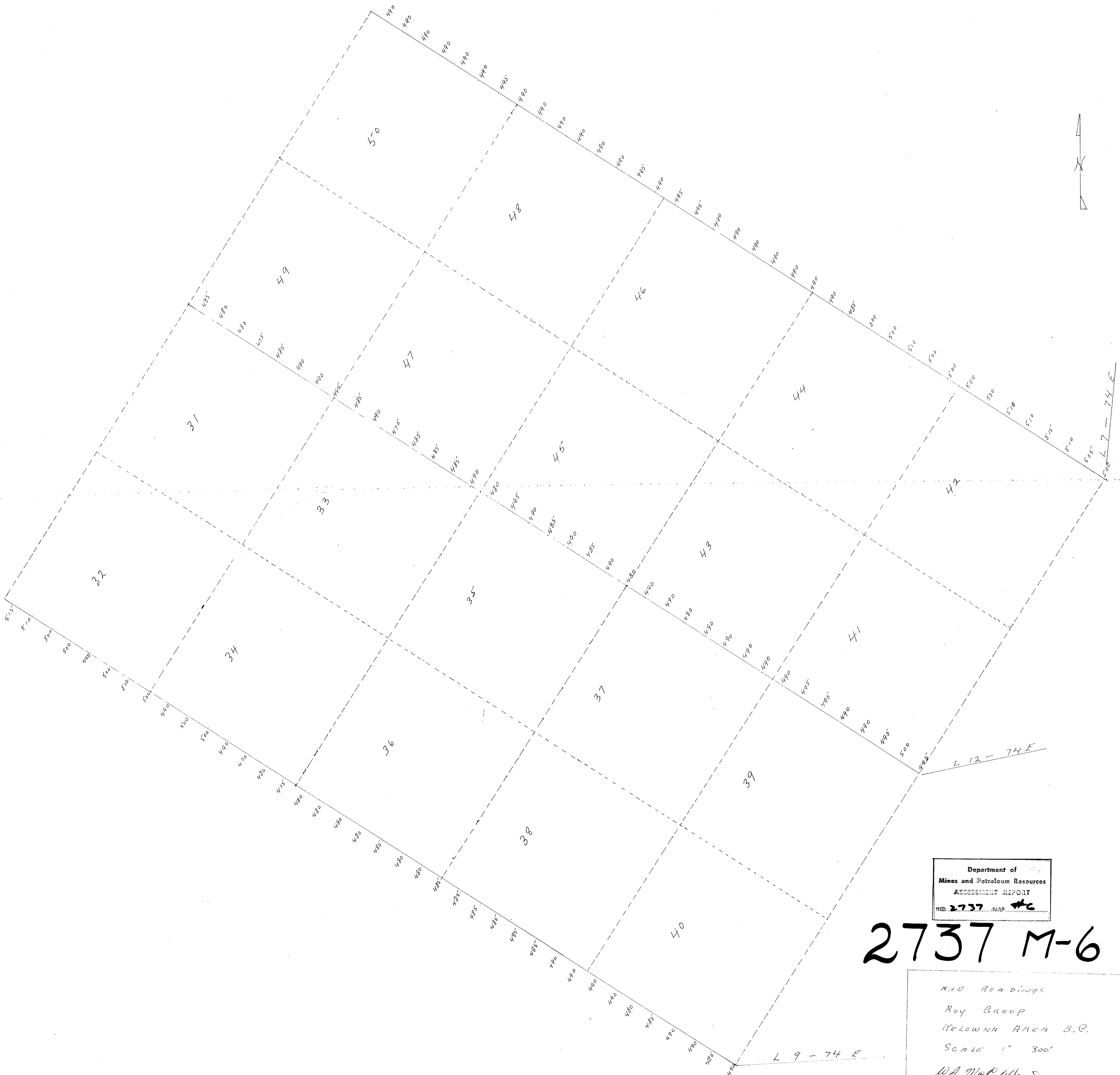


2737
M-5

MAG READINGS
ROY GROUP
KELOWNA AREA B.C.
SCALE 1" = 300'

M.A. McEldown

Department of
Mines and Petroleum Resources
ASSESSMENT REPORT
NO. 2737 M-5



Department of
 Mines and Petroleum Resources
 ASSESSMENT REPORT
 HD 2737 MAP 4C

2737 M-6

M.D. READINGS
 ROY GROUP
 MELBONA AREA B.P.
 SCALE 1" = 300'
 W.A. McCallum

L 12 - 74 E

L 9 - 74 E