

93F/36
3W
6E 6W

Department of
Mines and Petroleum Resources
ASSESSMENT REPORT
NO. 2792 MAP.....

N.T.S. 93-F-6

GEOCHEMICAL REPORT ON THE 'T', 'CAP'
AND 'TUT' CLAIM GROUPS, CAPOOSE LAKE,
BRITISH COLUMBIA
PART 5 OF 5, MAPS ONLY

M.B. Mehrtens, Ph.D. December, 1970
H.W. Marsh, B.Sc., P.Eng. December, 1970



Department of
Mines and Petroleum Resources
ASSESSMENT REPORT
NO. 2752 MAP #53

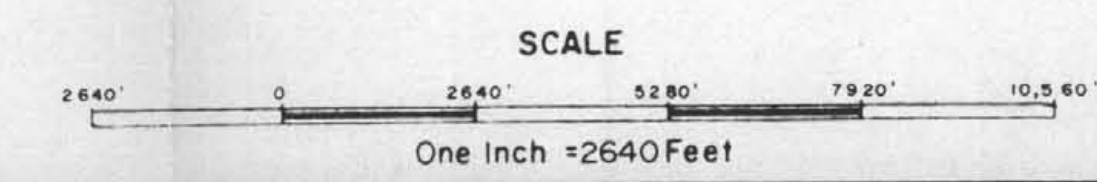
H. W. Marsh



RIO TINTO CANADIAN EXPLORATION LIMITED
CAPOOSE PROJECT B.C.
SOIL PROFILE MAP
Cu RESULTS - P.P.M. ("C" SOIL HORIZON)
NOV. 70 | D.R.B./rwr | DWG. GC-8139

NOTE: Stream locations corrected by D. BOYLE

NTS
93-F-6





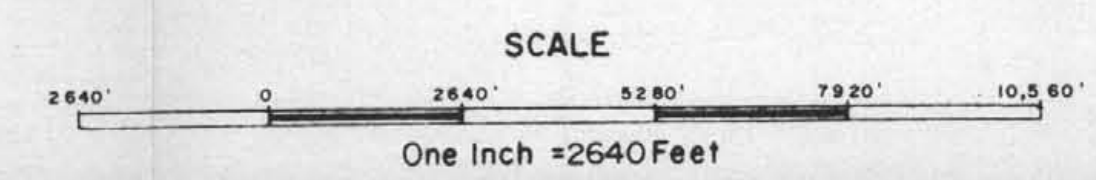
Department of
Mines and Petroleum Resources
ASSESSMENT REPORT
NO. 2782 MAP #54



RIO TINTO CANADIAN EXPLORATION LIMITED
CAPOOSE PROJECT B.C.
SOIL PROFILE MAP
Mo RESULTS - P.P.M. ("C" SOIL HORIZON)
NOV. 70 D.R.B./rwr DWG GC-8140

NOTE: Stream locations corrected by D. BOYLE

NTS
93-F-6

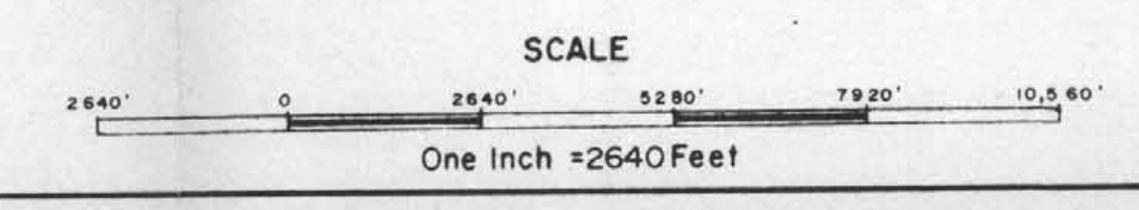




Department of
Mines and Petroleum Resources
ASSESSMENT REPORT
NO. 2782 MAP #55

NOTE: Stream locations corrected by D. BOYLE

NTS
93-F-6



H. Marshall
H. W. MARSH
Geological
ENGINEER

RIO TINTO CANADIAN EXPLORATION LIMITED
CAPOSE PROJECT - B.C.
SOIL PROFILE MAP
NI RESULTS - P.P.M. ("C" SOIL HORIZON)
NOV. 70 D.R.B./rwr DWG. GC-8141



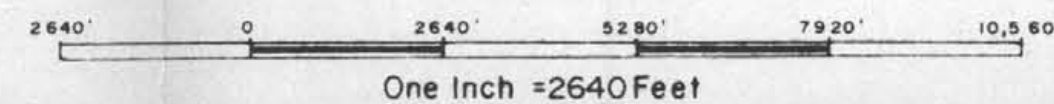
Department of
Mines and Petroleum Resources
ASSESSMENT REPORT
NO. 2782 MAP #56

H. S. Mann
PROFESSIONAL
ENGINEER

NOTE: Stream locations corrected by D. BOYLE

NTS
93-P-6

SCALE



RIO TINTO CANADIAN EXPLORATION
CAPOOSE PROJECT B.C.
SOIL PROFILE MAP
Pb RESULTS - P.P.M. ("C" SOIL HORIZON)
NOV. 70 D.R.B./rwr DWG. GC-8142

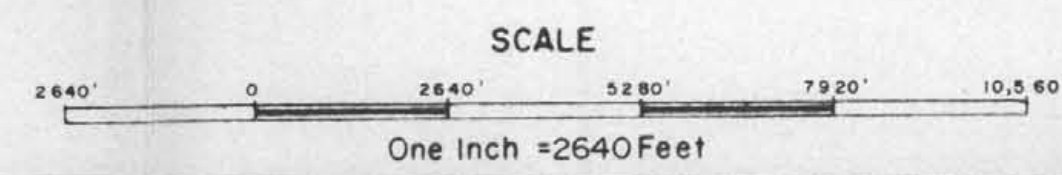




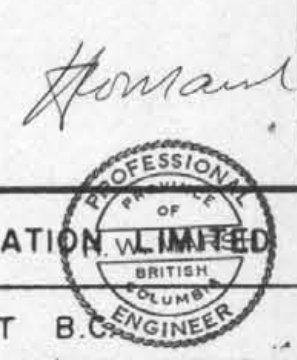
Department of
 Mines and Petroleum Resources
 ASSESSMENT REPORT
 NO. 2782 MAP 457

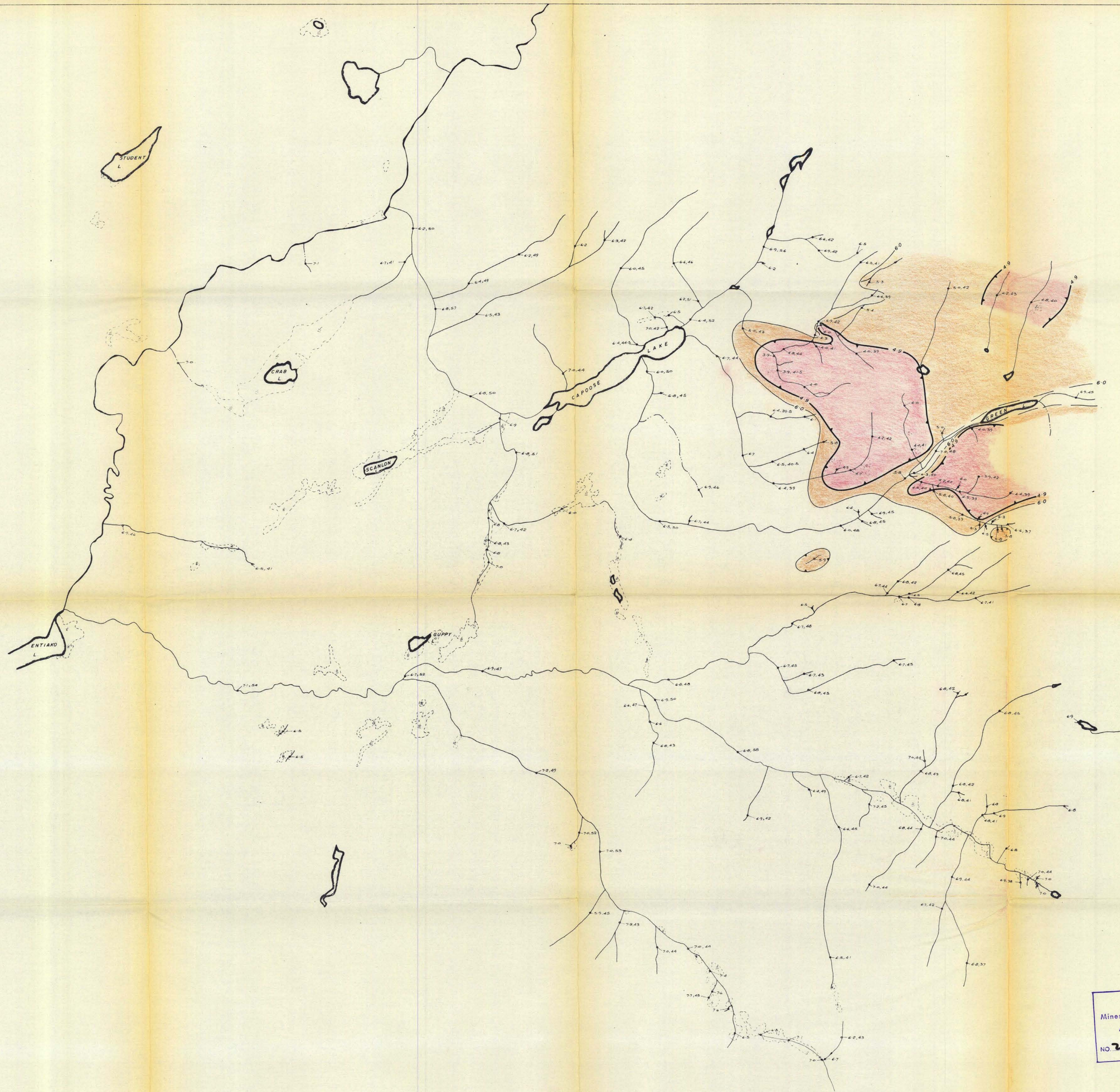
NOTE: Stream locations corrected by D. BOYLE

NTS
 93-F-6



RIO TINTO CANADIAN EXPLORATION LIMITED
 CAPOOSE PROJECT B.C. ENGINEERS
 SOIL PROFILE MAP
 Zn RESULTS - P.P.M. ("C" SOIL HORIZON)
 NOV. 70 D.R.B./rwr DWG. GC-8143





Department of
Mines and Petroleum Resources
ASSESSMENT REPORT
NO 2787 MAP #58

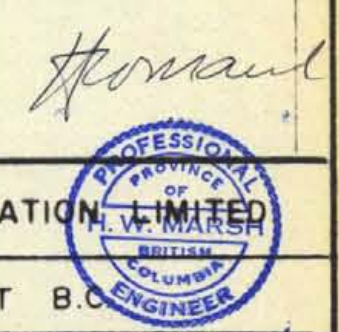
Legend
 Stream ——— pH of stream
 Sample location ——— Temperature of water

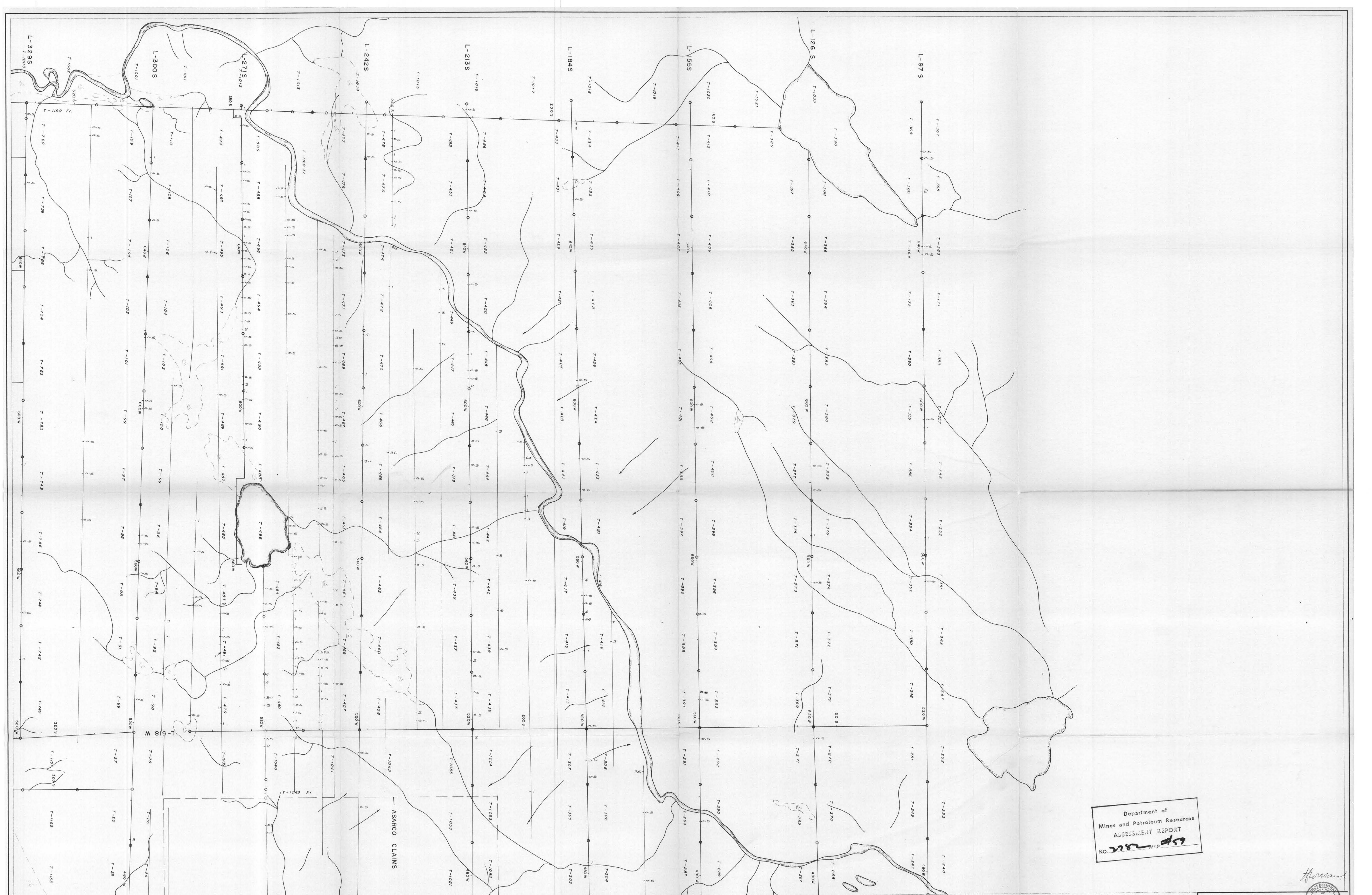
NOTE: Stream locations corrected by D. BOYLE

NTS
93-F-6

SCALE
 0 2640 5280 7920 10560
 One Inch = 2640 Feet

RIO TINTO CANADIAN EXPLORATION LIMITED <small>INCORPORATED IN CANADA</small>		
CAIPOOSE PROJECT B		
pH & TEMPERATURE OF STREAMS		
NOV. 70	D.R.B./rwr	DWG GC-8116



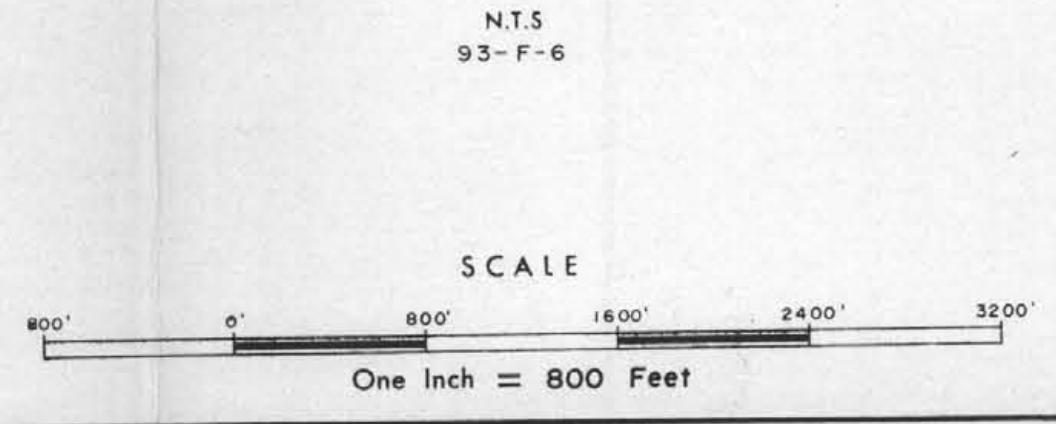


NOTE: Values not shown are not detectable.

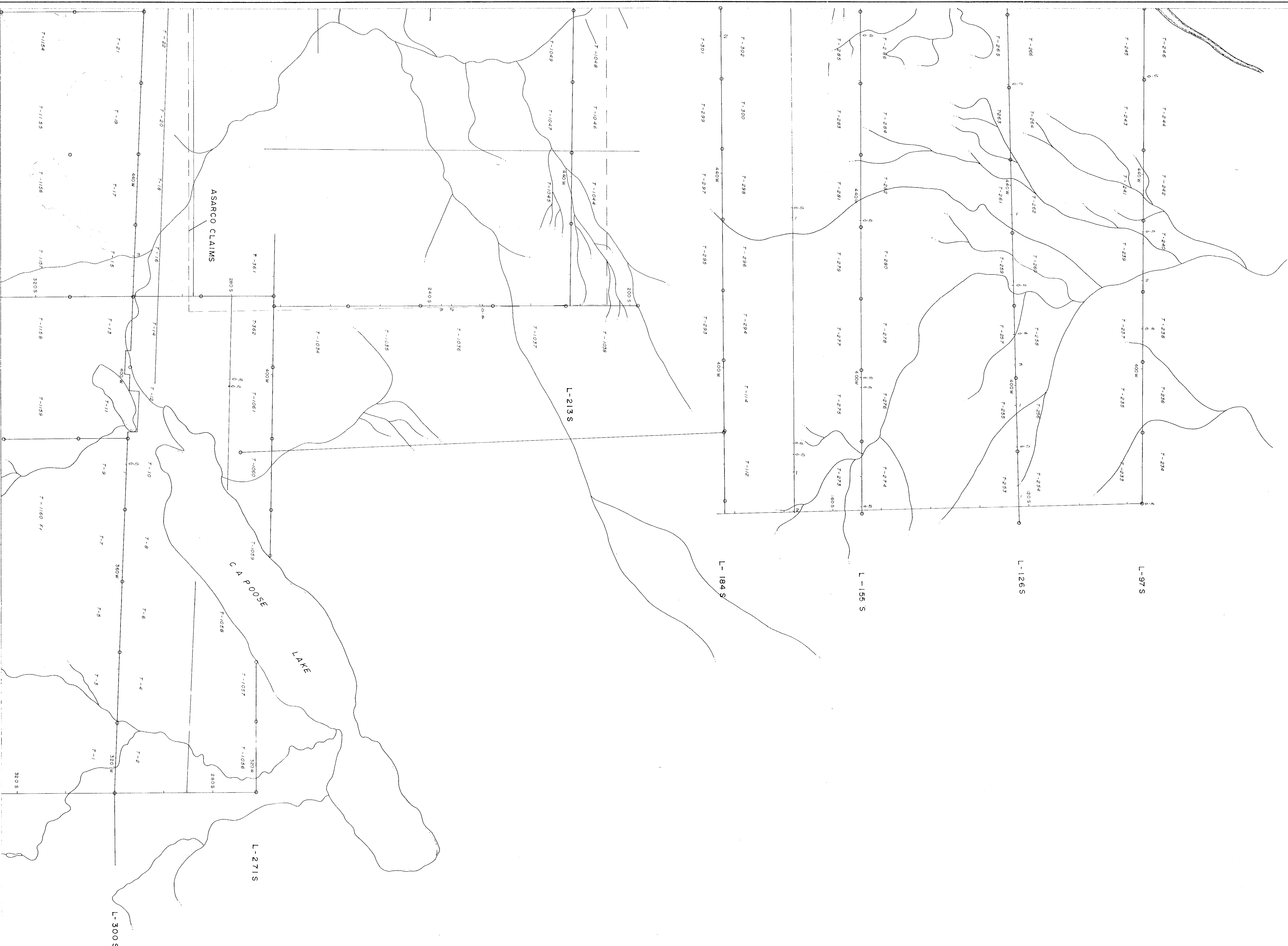
KEY

1	2
3	4
5	

Department of
Mines and Petroleum Resources
ASSESSMENT REPORT
NO. 210 MP 49



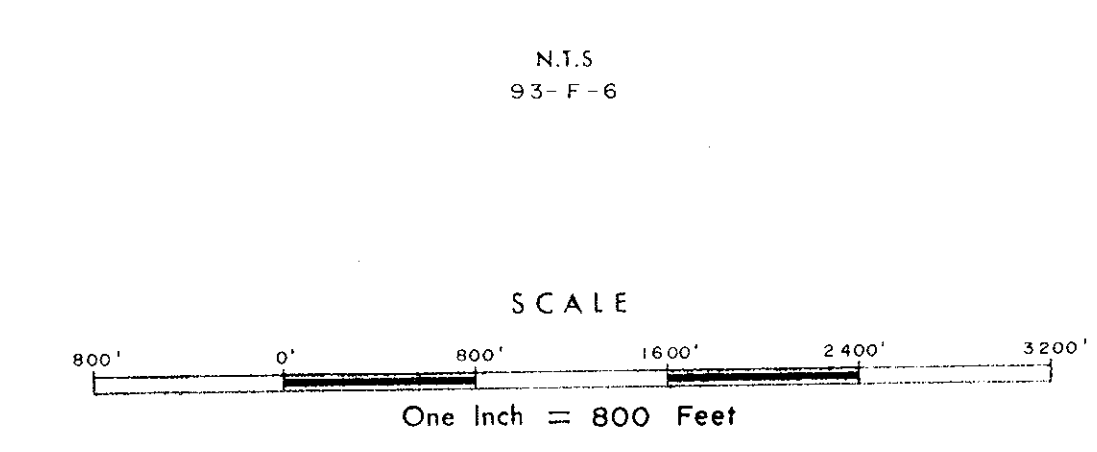
RIO TINTO CANADIAN EXPLORATION LIMITED
CAPOOSE PROJECT B.C.
T-CLAIMS
COLD EXTRACTABLE Cu RESULTS
MAY-70 A.T./r.w. DWG. GC-8144-1



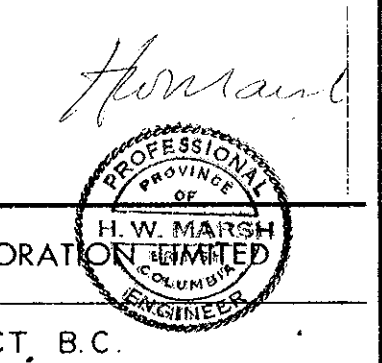
NOTE: Values not shown are not detectable.

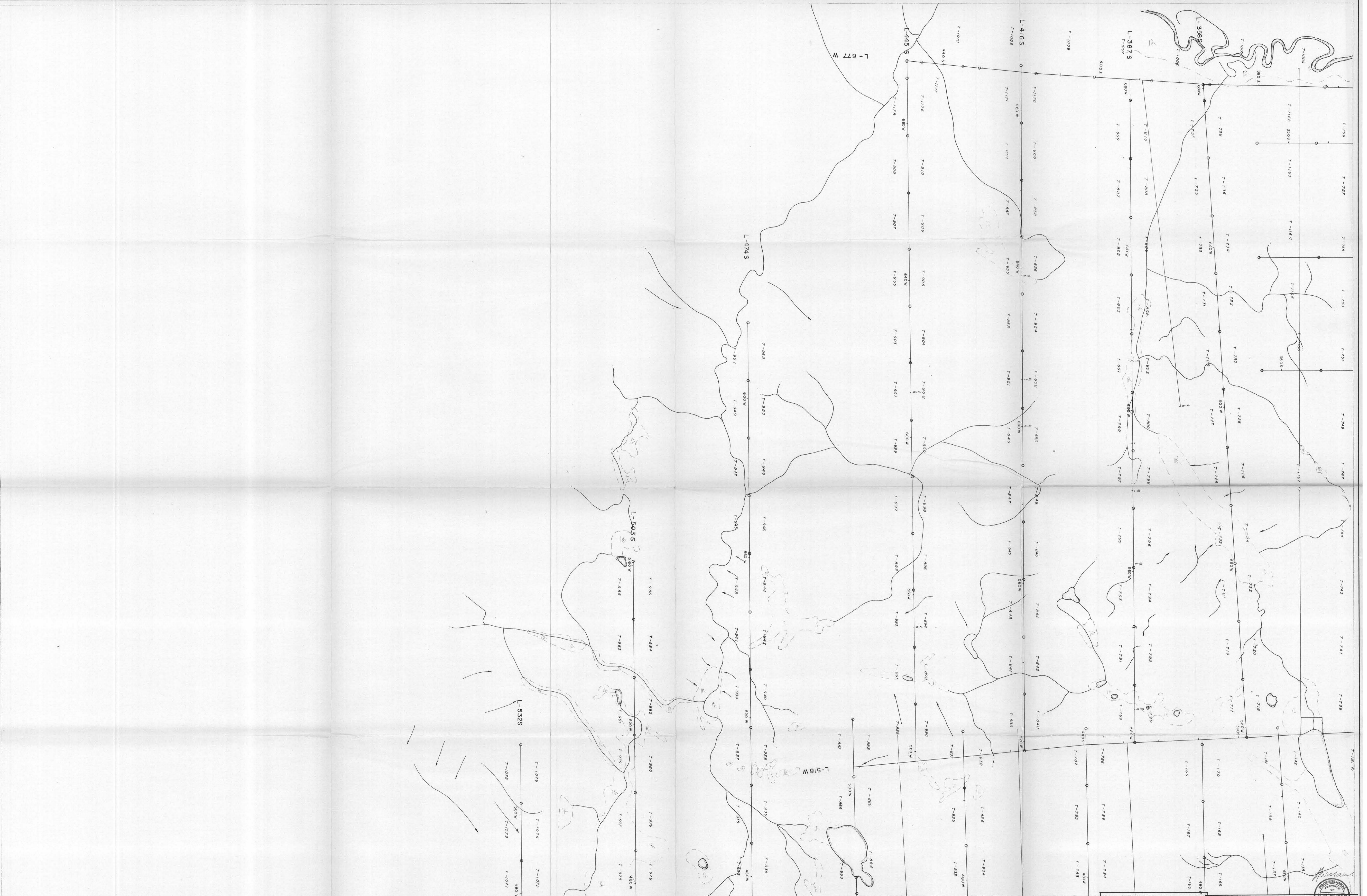
1	2	KEY
3	4	5

Department of
 Mines and Petroleum Resources
 ASSESSMENT REPORT
 NO. 2782 MAP #60



RIO TINTO CANADIAN EXPLORATION
 CAPOOSE PROJECT, B.C.
 T-CLAIMS
 COLD EXTRACTABLE Cu. RESULTS
 MAY-70 A.T./lwr. DWG. GC-8144-2





NOTE: Values not shown are not detectable

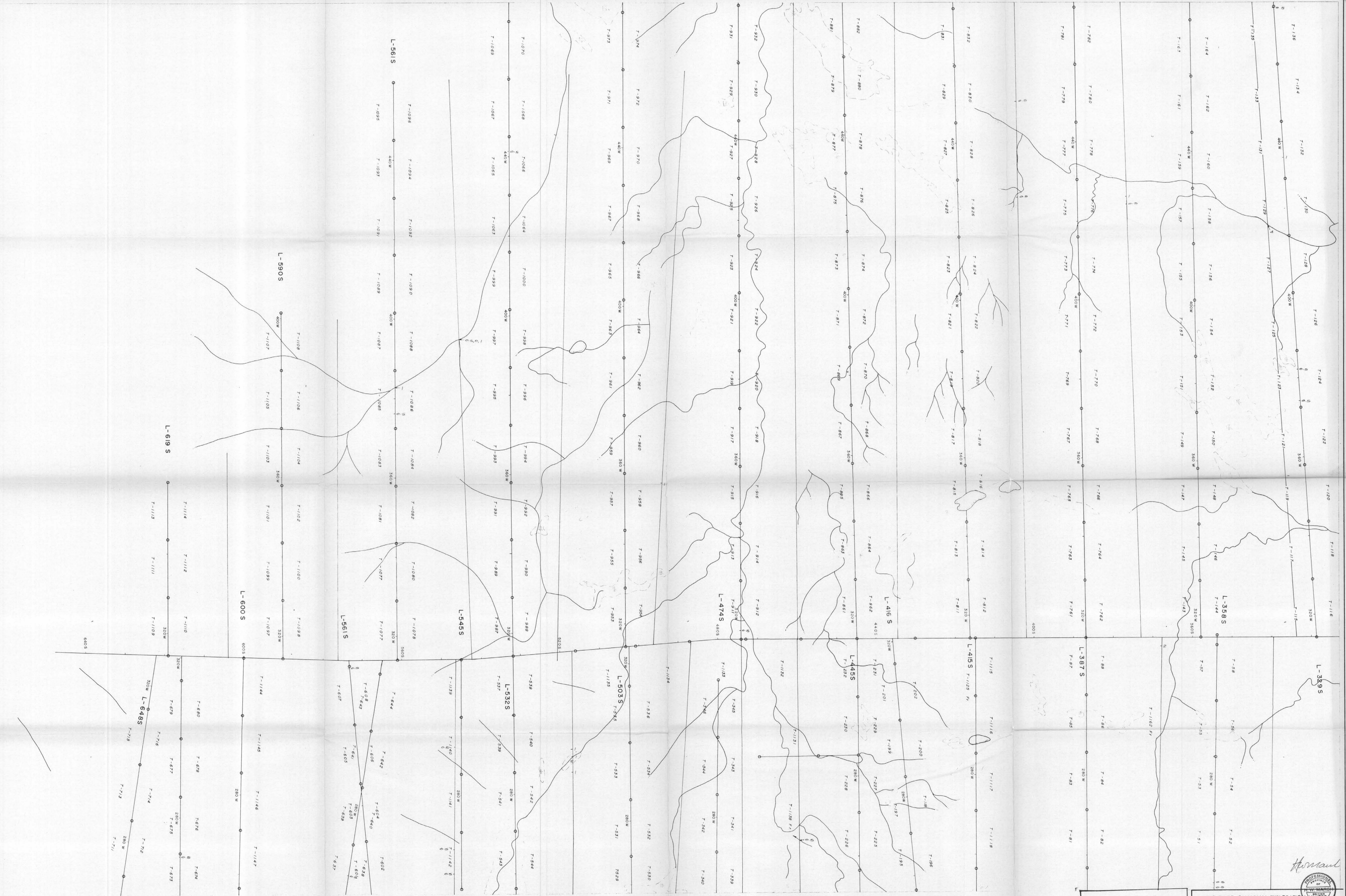
KEY	
1	2
3	4
5	

N.T.S.
93-F-2-5-6

Department of
Mines and Petroleum Resources
ASSESSMENT REPORT
NO. 2782 MAP #11

SCALE
0' 800' 1600' 2400' 3200'
One Inch = 800 Feet

RIO TINTO CANADIAN EXPLORATION	
CAPOOSE PROJECT B.C.	
T-CLAIMS	
COLD EXTRACTABLE Cu RESULTS	
MAY-70	A.T./l.wr. DWG. GC-8144-3



NOTE: Values not shown are not detectable

KEY

1	2
3	4
5	

Department of
Mines and Petroleum Resources
ASSESSMENT REPORT
2782 MAP 462

SCALE
0' 800' 1600' 2400' 3200'
One Inch = 800 Feet

RIO TINTO CANADIAN EXPLORATION
CAPOOSE PROJECT B.C.
T-CLAIMS
COLD EXTRACTABLE Cu RESULTS
MAY-70 A.T./r.w.r. DWG. GC-8144-4





NOTE: Values not shown are not detectable

KEY				
1	2	3	4	5

Department of
Mines and Petroleum Resources
ASSESSMENT REPORT
NO. 2712 MAP #63

RIO TINTO CANADIAN EXPLORATION
CAPOOSE PROJECT B.C.
T-CLAIMS
COLD EXTRACTABLE Cu RESULTS
MAY-70 A.T./r.w. DWG. GC-8144-5

