

2794

GEOLOGICAL and GEOCHEMICAL REPORT

D D CLAIMS

30 Miles N.E. of Vancouver
British Columbia

Lat. $49^{\circ} 35'$ N., Long. $122^{\circ} 43'$ W

New Westminster Mining Division

by

D. K. B R A G G

Endorsed by: G. A. NOEL, P. Eng.

Claims owned by B & T MINES LTD. (NPL)

September 14 - 28, 1970

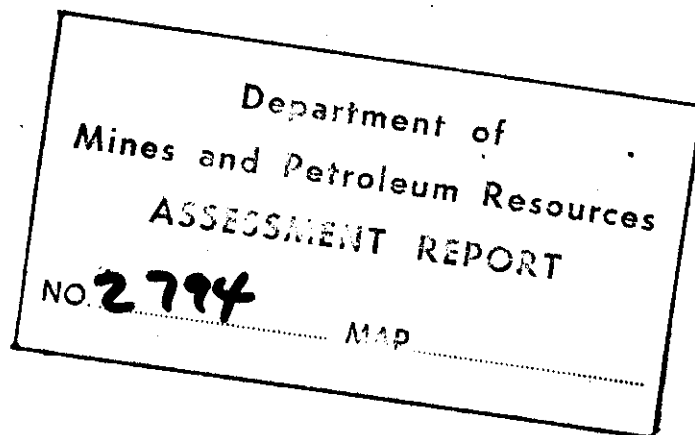


TABLE OF CONTENTS

#1

Index Map	1
Introduction	2
Property Location, Accessibility, Description	3
Field Work	4 - 5
Geology	6 - 7
Geochemical Results	8
Conclusion	9
Appendix	10
Statement of Qualifications	11
Statement of Costs	12
Certificate of Qualifications (<i>Endorsement</i>)	13
Certificates of Analysis	16

ILLUSTRATIONS

#2

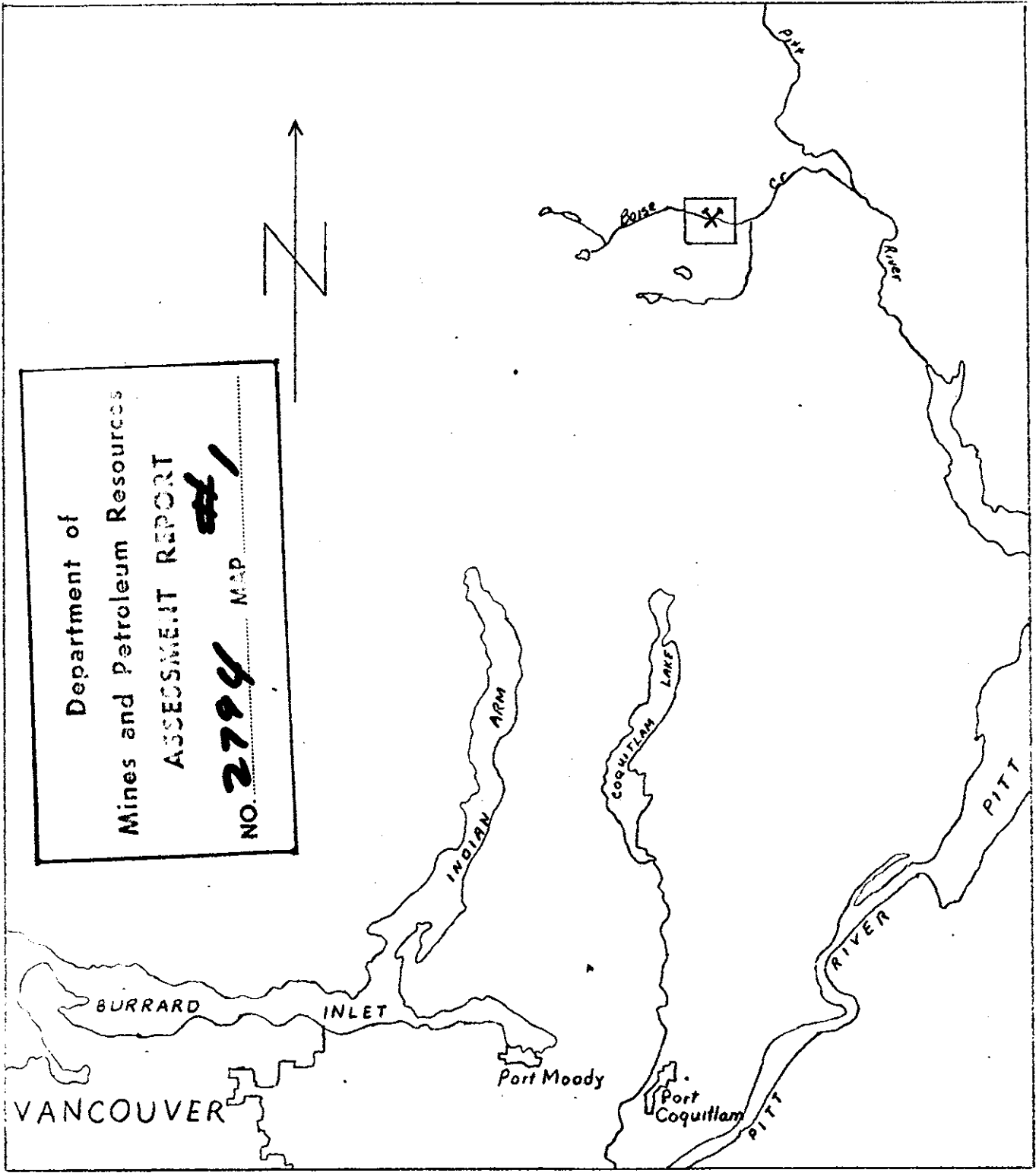
Histograms Cu, Mo Zn	14
Example of Soil Sample Data Sheets	15

~~Claim Map~~

#4 Geological Map

#5, 6, 7 Geochemical Soil Survey (cu ppm)
(Mo ppm)
(Zn ppm)

#3 Rock Chip Sample Geochem (Cu Mo Zn)



X BOISE CREEK PROPERTY NEW WESTMINSTER Mining Division

Scale 1" = 4 Mi

INTRODUCTION

The D D #1 to 20 mining claims were staked on November 4th and 5th of November, 1966 by D. W. Tibbott, 14814 N.E. 13th Street, Bellevue, Washington, U. S. A. They were recorded in Vancouver on the 8th of November, 1966.

On January 3, 1967, the D D #1 to 20 mining claims were acquired by B & T Mines Ltd. (NPL) under agreement with D. W. Tibbott. On the same day B & T Mines Ltd. (NPL) optioned the 20 claims to Flagstone Mines Ltd. (NPL). Subsequent to this Flagstone Mines Ltd. (NPL) optioned the claims to Caribbean Exploration Corp.

During the summer of 1967 considerable exploration work was done on the D D and adjoining claims. This work consisted mainly of diamond drilling, induced polarization survey, and aeromagnetic survey. Only limited geochemistry and geological mapping was done. A total of one hundred and forty six certificates of work was granted on the D D Claims.

The option between Flagstone Mines Ltd. (NPL) and B & T Mines Ltd. (NPL) was terminated on December 19, 1968. Only limited portions of the results of the work done during the 1967 season has been made available to B & T Mines. The results that were made available indicated above background amounts of copper and molybdenum in the rocks tested by diamond drilling.

On September 14, 1970 a geochemical soil sampling and geological topographical mapping program was started on the D D claims. This program was designed to determine the soil geochemistry of the area drilled in 1967, relative to the results of the drilling, as well as testing the surrounding area to delineate other potential anomalous zones.

B & T Mines Ltd. (NPL), 3567 West 27th Avenue, Vancouver 8, B. C. is the recorded owner of the D D #1 to 20 claims.

PROPERTY LOCATION, ACCESSIBILITY & DESCRIPTION

The D D Claims are situated 30 air miles north east from Vancouver along the sides of Boise Creek, five miles up stream from its confluence with Pitt River. The claims are in the New Westminster Mining Division.

Access is by helicopter either from Vancouver or Pitt Meadows airport. An alternate route is along highway No. 7, then by ferry up the Pitt River to the north end of Pitt Lake. From there a restricted B. C. Forest Products road can be used on the east side of the upper Pitt River, crossing the river below the Boise Creek. This road then continues up the south side of Boise Creek approximately a mile and a half. From the end of the road there is an old pack horse trail crossing to the north side of Boise Creek and following along the creek westerly approximately 3 1/2 miles to the property at 1600 ft. elevation on the creek.

Elevations on the D D #1 to 20 claims range from 1100 ft. to 4000 ft. above sea level. The topography on the whole is steep and rugged with the average slopes in the Boise Creek valley approximately 25° steepening to 35° - 40° at the 3500 ft. elevation. The lateral streams are numerous and in many instances deeply canyoned. Traverses along contour at times is very difficult to impossible.

The forest cover is typical of the west coast rain forest containing young and mature cedar, hemlock, balsam, spruce, fir and alder, in that order of predominance. Numerous slide areas have developed, particularly on the northern slopes; these are covered mainly by briers and alder, making travel through them slow and difficult.

The overburden is generally shallow, averaging 20± feet, ranging from 0 ft. to approximately 40 ft. in depth, although there may be a few filled valleys with overburden depth greater than 40 ft. The overburden consists mainly of glacial debris and gravitational sluff. Soil erosion on the steeper slopes is fairly extensive to stable on most slopes less than 30°. Over most of the area sampled the soil profiles are well developed.

FIELD WORK

The geochemical soil sampling program and geological mapping were commenced on September 14, 1970, and concluded on September 28, 1970.

During this period the following personnel worked on the property:

D. K. Bragg	Field Geologist	Sept. 14 - Sept. 28
E.S. Warner	Field Assistant	Sept. 14 - Sept. 28
R. O. Koponen	Field Assistant	Sept. 14 - Sept. 28

D. K. Bragg, supervised the field assistants and participated in the surveying and soil sampling. He mapped the geology and physical features of the area.

The traverse lines were surveyed with a ranger compass and 200' nylon chain. Allowances or slope corrections were made for all chainages. The soil sample lines were run north-south at 400 ft. intervals wherever possible, with the sample stations every 200 ft. along the lines. Offsets were necessary to get around difficult or impassable terrain and the creek canyons. Control lines were run east-west at 30N, 60N, 63-50N, 66N and 90N.

The north-south lines were numbered from south to north and the east-west lines were numbered from east to west in a north-west quadrant grid system. The lines were marked with orange and the stations with blue plastic flagging.

The soil samples were taken using a 3 1/2 ft. long and 1 1/8 inch diameter auger. The depths from which the samples were taken varied from 6" to 3' depending on the proximity of bed rock and the availability of soil. Wherever possible, care was exercised to assure that the samples were taken in the B soil horizon.

Soil sample data sheets were utilized and data on vegetation, soil type, texture and colour, sample depth, topography and estimated depth of overburden were recorded in the field. The samples were placed in high wet strength Kraft 3 1/2" x 6 1/8" OE water proof bags, directly from the auger. The samples were partially dried in the air in preparation for shipment to a custom laboratory.

FIELD WORK - continued

A total of 12.73 line miles was surveyed on the D D Claims and 316 soil samples were collected. Thirty-one rock chip samples were also collected in an attempt to establish some correlation between the outcrops and the soil samples.

These samples were analysed for copper, molybdenum and zinc by Chemex Labs Ltd., 212 Brooksbank Avenue, North Vancouver, using the atomic absorption method of analysis.

This geochemical sampling and geological mapping was done on the D D claim numbers 1, 2, 3, 4, 7, 8, 9, 10, 13, 14, 17, 18.

G E O L O G Y

The D D claims lie within the assemblage of rocks known as the Coast Plutons. Surrounding the Boise Creek area these rocks are comprised mainly of hornblende diorite, quartz diorite and granodiorite. (J.A. Roddick, G.S.C. Memoir 335, Vancouver North, Coquitlam and Pitt Lake Map area, B. C.).

Within the area of the D D claims there is a complex of highly metamorphosed and partially granitized andesitic and possibly sedimentary rocks. This roof pendant is probably of the Harrison Lake Formation, of middle Jurassic age.

This unit shows varying degrees of granitization, mainly in the form of silicification and feldspathization, and in places the rocks appear entirely siliceous and the original fabric of the rock unidentifiable. In instances the rock appears as a leucocratic granite. Within this unit there appear numerous veins and bodies of granitic rocks of intrusive nature.

To compound the problem further there is a complete gradation existing between the Harrison Lake Formation and the Coast Plutons. This migmatitic complex consists of intrusive granitic rocks and granitized portions of the meta-andesites.

The meta andesites and the migmatites are highly fractured and crushed along which there has been an introduction of vein quartz and silicification of the crushed zones. The fracture intensity appears to decrease outwardly from the meta-andesitic pendant. Associated with this silicification has been the introduction of pyrite, chalcopyrite and molybdenite. The most conspicuous sulfide mineralization appears in this irregular net work of quartz veins and fracture fills. However, the permeating silica flood has resulted in disseminations of the sulphides in varying concentrations throughout the meta-andesites and the migmatite, and even to the silica enriched diorites of the Coast Plutons.

Alteration is intensive in some areas. In many instances it appears that the mafic minerals are completely altered to chlorite and sericite. Again the resultant appears as a leucocratic granite. A certain amount of kaolinization has taken place.

The evidence of major faulting in the area is indistinct. Faults are suspected but were not identified by the writer in the field. One suspected fault is along the Boise Creek, striking N 70 W, intersecting 44N, 54S, and 84W 63N. Another fault possibly exists striking N 22E intersecting 64W, 64N and 52W 30N. This later fault appears to be offset by the first and continues on the south side 400 ft. to the east, intersecting 58W, 60N and 76W 30N. These faults are not indicated on the accompanying geological map.

GEOLOGY - continued

Due to the resultant complexity of the geology and the difficulty of delineating exact contacts, the accompanying geological map has been divided into two units only. The first unit represents the Coast Plutons inclusive of Hornblende diorite, diorite and grano diorite and silica enriched facies of each.

The second unit includes the meta-andesites and meta-sediments (?) in part highly metamorphosed and granitized. This unit also includes the migmatitic transition zone between the Harrison Lake formation and the Coast Plutons.

These two units may in effect overlap as the units were separated more on the basis of pyrite content, fracture intensity, silicification and alteration of the rocks rather than trying to identify the rocks of each unit. For the most part the second unit includes the rocks in which the pyrite content appears greater than 1%, there is still a strong degree of fracturing, silicification and indication of chloritization.

The contour lines were based on a limited number of known elevations in the area and the slopes indicated in the data reported on the geochem data sheets. They have been draughted to indicate the steepness of the slopes, the ruggedness of the terrain and the possible dispersion patterns of the geochem anomalies.

GEOCHEMICAL RESULTS

The 316 soil samples and 31 rock chip samples were analysed by Chemex Labs Ltd., 212 Brooksbank Ave., North Vancouver, B.C. The procedure for the handling and analysis of geochemical samples were as follows:

- 1) Geochem samples were air dried at 150°F.
- 2) Samples were sieved through -80 mesh nylon and stainless steel sieve.
- 3) 0.5 grams of -80 mesh material was weighed into a test tube and digested in hot 70% HClO₄ and HNO₃. Digestion time 2 hours.
- 4) Sample volume was adjusted to 25 mls. and sample was mixed thoroughly.
- 5) Analysis of copper, molybdenum and zinc was completed by atomic absorption methods.

The results are given in parts per million (ppm) and plotted on separate maps included with this report.

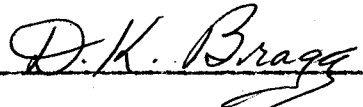
Histograms made for copper, molybdenum and zinc suggest a background of 35 to 45 ppm for copper; 35 to 45 ppm for zinc and 0 to 5 ppm for molybdenum.

CONCLUSION

The geochemical results indicate a broad copper-molybdenum anomaly along the lower elevations of the Boise Creek widening to the NE and SW along the axis of the suspected NE fault. Towards the western end of the area sampled a zinc anomaly is developing roughly coincident with the copper-molybdenum highs on D D #10. It is interesting to note that in the vicinity of the zinc anomaly the copper highs are considerably higher than where there is only a copper-molybdenum anomaly.

The coincident copper, zinc, molybdenum anomaly on D D #10 may indicate a zone of economic mineralization. This anomaly is as yet untested by drilling.

Insufficient rock chip samples have been collected to date to establish a statistical correlation between the rock sample analysis and the soil geochem of the immediate rock chip sample site. However, there is indication that where the rock chip analysis values are appreciably high, this is not reflected in the immediate soil sample site to the same degree. This is particularly so with the copper analysis.


D. K. BRAGG,
Prospector Geologist

APPENDIX

STATEMENT OF QUALIFICATIONS

D. K. Bragg supervised and participated in the soil sampling and survey control. He mapped the physical features and the geology of the area surveyed. His qualifications are as follows:

Graduated Armstrong High School, B.C. 1951.

Attended U.B.C. from 1958 to 1962 in the faculty of Arts and Science, in honors geology.

Worked for Kemco Explorations during the summers of 1956, 1957 and 1959 in the Yukon and northern British Columbia as an assistant prospector and geochem sampler under the direction of Dr. R. Campbell and R. Woodcock.

Worked as chief prospector for the Nahanni 60 Syndicate in the Northwest Territories in 1960 under the direction of Doug Wilmont.

Worked as chief prospector in the Yukon for Dualco in 1961 under the supervision of E. Wozniak.

Worked as chief prospector for Mining Corp. of Canada in south-east British Columbia in 1962 under J.S. Scott and Dr. K. Northcote.

Worked as chief prospector during the summer of 1963, for the Francis River Syndicate, in the Central Yukon, under the direction of Dr. A. Aho.

Worked as a field geologist in the Greenwood area of British Columbia for Scurry Rainbow Oil in 1965 under the direction of Bill Quinn.

Worked as a field supervisor for Alrae Explorations Ltd. from September 1965 to April 1, 1967 under the direction of Rae Jury.

Has received B. C. Provincial Grubstakes for the years 1964, 1968, 1969 and 1970.

Worked in the Port Hardy-Holberg Inlet area for three years

STATEMENT OF COSTS

September 14 - 28, 1970

(Salaries plus field expenses at \$7.00/man day)

D. K. Bragg	15 days @ \$42.00	\$630.00	
E.S. Warner	15 days @ \$29.00	435.00	
R.O. Koponen	15 days @ \$28.00	420.00	
Employee Benefits, (UIC, CPP, WCB)		<u>90.00</u>	\$1,575.00
Analysis:			
315 soil samples @ \$2.00		\$630.00	
31 rock chip samples @ \$2.75		85.25	
1 composite, 30 element, semi-quantitative analysis		12.00	
Truck rental, 15 days @ \$11.00/day		165.00	
Report and map preparation		<u>700.00</u>	<u>1,592.25</u>
TOTAL COSTS			<u>\$ 3,167.25</u>

CERTIFICATE OF ENDORSEMENT

I, Gerald A. Noel, of 4553 Timberline Place, North Vancouver, B. C., do certify that:

1. I am a Registered Professional Engineer of British Columbia.
2. I am a graduate of University of British Columbia, B.A. Sc. 1950 (Geology) and University of Toronto M.A. Sc. 1951 (Geology).
3. I have been employed as a geologist by:

 Kennco Explorations (Canada) Ltd. for 5 years
 Utah Construction and Mining Company for 13 years
 El Paso Mining and Milling Company for 1 year
4. The fieldwork for this report, including preparation of maps and report, was conducted by or under the supervision of Mr. D. K. Bragg.

 I was not engaged in this work but have reviewed the final results.
5. I have been acquainted personally with Mr. D. K. Bragg since 1957 and during this period have been engaged with him in mineral exploration work. I consider him qualified to carry out the work covered in this report.



G. A. Noel

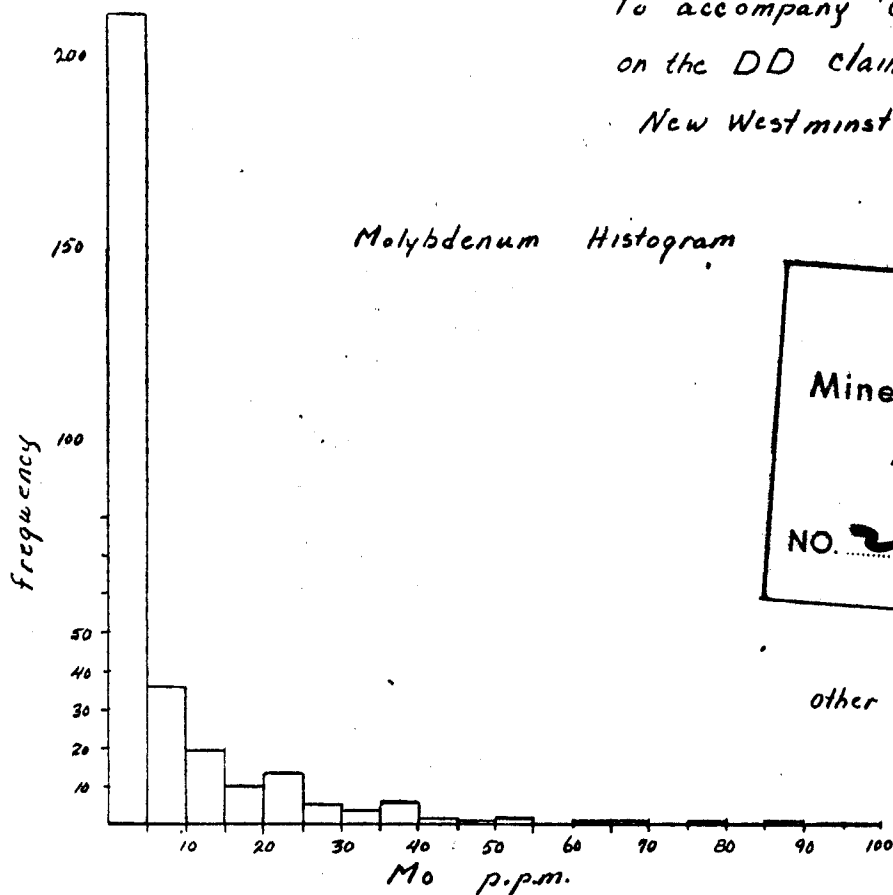
Vancouver, B. C.
December 18, 1970

HISTOGRAMS Mo., Cu., Zn.

Geochemical Data 316 Samples

To accompany 'Geological & Geochemical Report'
on the DD claims Boise Creek.

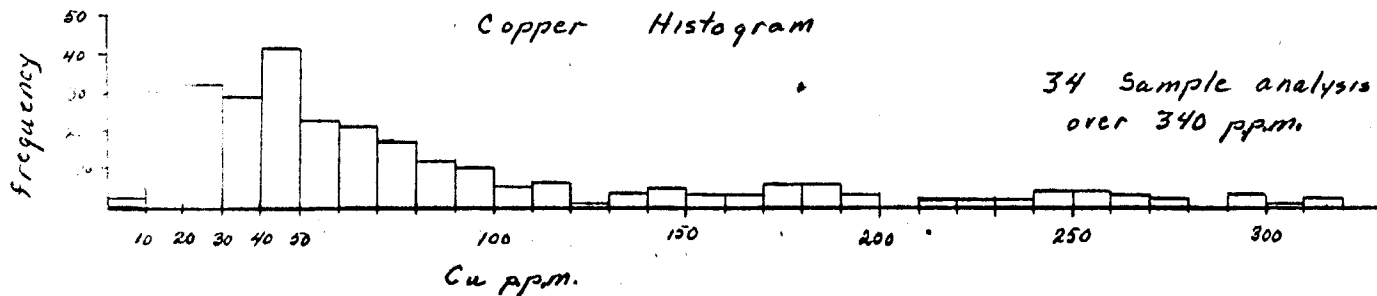
New Westminster Mining Division.



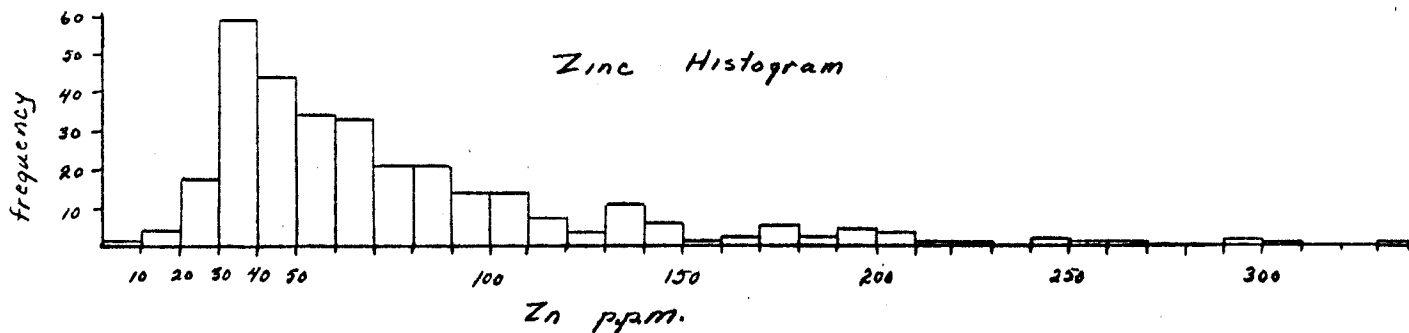
Department of
Mines and Petroleum Resources
ASSESSMENT REPORT
NO. 2794 MAP #2

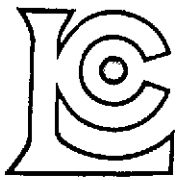
other Mo analysis

112	-
122	-
142	-
540	-



34 Sample analysis
over 340 p.p.m.





CHEMEX LABS LTD.

212 BROOKSBANK AVE.
NORTH VANCOUVER, B.C.
CANADA
TELEPHONE: 985-0648

• CHEMISTS • GEOCHEMISTS • ANALYSTS • ASSAYERS

CERTIFICATE OF ANALYSIS

TO: Mr. D. K. Bragg,
3567 W. 27th Ave.,
Vancouver, B. C.

CERTIFICATE NO. 12413

INVOICE NO. 4342

DATE RECEIVED October 13/70

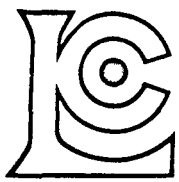
DATE ANALYSED October 20/70

ATTN:

"BOISE CREEK"

SAMPLE NO.:		PPM Copper	PPM Molybdenum	PPM Zinc
30N	58W	54	2	71
	62W	44	0	68
	66W	51	2	46
	72W	36	2	101
	74W	62	3	74
30N	82W	38	0	63
38N	78W	154	3	194
58N	62W	183	40	63
60N	44W	56	0	63
	46W	183	2	87
	48W	46	2	44
	50W	540	2	145
	52W	700	0	58
	54W	520	9	46
	56W	183	5	53
	58W	44	11	42
60N	82W	144	142	36
63N	62W	880	13	15
63N	80W	248	6	93
63+50N	66W	248	41	63
	68W	178	2	66
	70W	88	0	84
	72W	452	19	207
	74W	88	0	57
	76W	78	4	53
63+50N	78W	52	0	53
66N	66W	98	9	44
	68W	76	5	40
	70W	33	7	36
	74W	76	10	58
	76W	1680	2	13
	78W	173	38	93
	80W	670	20	200
	82W	341	18	200
	86W	400	17	242
66N	88W	424	15	295
84N	58W	98	5	173
90N	50W	88	2	178
	54W	34	0	110
90N	56W	92	0	82
	Std., #23	6 6	16	113

Certified by



CHEMEX LABS LTD.

212 BROOKSBANK AVE.
NORTH VANCOUVER, B.C.
CANADA
TELEPHONE: 985-0648

• CHEMISTS • GEOCHEMISTS • ANALYSTS • ASSAYERS

CERTIFICATE OF ANALYSIS

CERTIFICATE NO. 12414

INVOICE NO. 4342

DATE RECEIVED October 13/70

DATE ANALYSED October 20/70

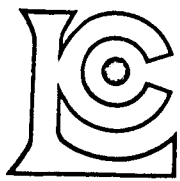
TO: Mr. D. K. Bragg
3567 W. 27th Ave.,
Vancouver, B. C.

ATTN:

"BOISE CREEK"

SAMPLE NO.:		PPM Copper	PPM Molybdenum	PPM Zinc
90N	58W	62	6	149
	62W	98	3	227
	64W	12	1	29
	66W	14	1	29
	70W	74	0	84
	74W	22	0	44
	76W	20	2	71
	78W	141	0	178
	80W	14	0	63
	82W	44	7	126
90N	84W	31	25	138
PITT	1	20	6	34
PITT	2	22	8	40
44W	54+25N	31	2	42
	56N	20	1	18
44W	58N	62	1	44
48W	56N	194	31	98
	58N	116	6	78
	60N	116	3	63
	62N	126	0	87
	64N	41	1	63
	66N	48	0	63
	68N	88	1	87
	70N	277	1	213
	72N	44	0	93
	74N	52	1	107
	76N	18	1	36
	78N	26	1	31
	80N	28	0	40
	82N	18	0	34
	84N	90	0	117
	86N	20	0	46
	88N	63	0	145
48W	90N	14	0	32
52W	58N	410	1	34
	62N	670	1	38
	64N	62	0	50
	66N	38	0	36
	68N	66	1	107
52W	70N	152	4	107
	Std., #23	62	16	116

Certified by *R. A. Seethan*



CHEMEX LABS LTD.

212 BROOKSBANK AVE.
NORTH VANCOUVER, B.C.
CANADA
TELEPHONE: 985-0648

• CHEMISTS • GEOCHEMISTS • ANALYSTS • ASSAYERS

CERTIFICATE OF ANALYSIS

TO: Mr. D. K. Bragg
3567 W. 27th Ave.,
Vancouver, B. C.

CERTIFICATE NO. 12415
INVOICE NO. 4342
DATE RECEIVED Oct. 13/70
DATE ANALYSED Oct. 20/70

ATTN: "Boise Creek"

SAMPLE NO.:		PPM Copper	PPM Molybdenum	PPM Zinc
52W	72N	41	2	87
	74N	236	4	145
	76	64	0	57
	78	52	4	117
	80	40	0	71
	82	41	0	138
	84	26	5	126
	86	14	2	58
	88	44	0	40
52W	90N	16	0	68
53W	82N	20	0	36
53W	84N	24	3	46
55W	80N	18	0	71
55W	82N	154	1	133
56W	30N	40	0	57
	32	52	1	74
	34	41	1	84
	36	30	1	53
	38	20	1	22
	40	24	1	31
	42	50	2	44
	44	86	3	84
	46	300	4	138
	48	194	2	38
	50	300	5	46
	52	362	16	110
	54	163	7	71
56W	56N	255	40	107
56W	62N	467	10	63
	64	410	10	53
	66	236	19	34
	68	56	9	40
	70	56	3	46
	72	38	10	42
	74	183	6	117
	76	54	4	93
56W	78N	36	5	74
	84	44	2	104
	86	50	7	257
56W	88N	14	1	66
Std. #23		64	17	113

Certified by *A. H. Stollan*



CHEMEX LABS LTD.

212 BROOKSBANK AVE.
NORTH VANCOUVER, B.C.
CANADA
TELEPHONE: 985-0648

• CHEMISTS • GEOCHEMISTS • ANALYSTS • ASSAYERS

CERTIFICATE OF ANALYSIS

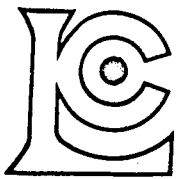
TO: Mr. D. K. Bragg
3567 W. 27th Ave.,
Vancouver, B. C.

CERTIFICATE NO. 12416
INVOICE NO. 4342
DATE RECEIVED Oct. 13/70
DATE ANALYSED Oct. 20/70

ATTN: "Boise Creek"

SAMPLE NO.:		PPM Copper	PPM Molybdenum	PPM Zinc
57W	74N	42	9	53
57W	76N	48	4	68
58W	70N	52	14	62
58W	72N	64	24	50
60W	30N	31	0	63
	32	90	4	168
	34	144	2	188
	36	104	0	68
	40	34	2	42
	42	24	1	78
	44	362	13	95
	46	46	1	48
	48	136	13	55
	50	386	12	53
	52	134	3	71
	54	352	37	71
	56	212	40	76
	58	386	88	104
60W	59+30N	467	12	107
	60N	484	3	22
	62	168	13	68
	64	64	16	32
	66	21	1	29
	68	76	7	40
60W	70N	114	12	87
	81N	362	1	178
	82	62	0	66
	84	20	1	53
	86	42	0	53
	88	24	2	46
60W	90N	62	1	98
62W	64N	248	10	66
63+50W	43N	70	2	62
64W	30N	277	3	63
	32	30	1	31
	34	52	0	82
	36	72	2	82
	38	21	0	36
	40	44	1	63
64W	42N	21	2	23
Std. #23		63	16	110

Certified by *R. B. ...*



CHEMEX LABS LTD.

212 BROOKSBANK AVE.
NORTH VANCOUVER, B.C.
CANADA
TELEPHONE: 985-0648

• CHEMISTS • GEOCHEMISTS • ANALYSTS • ASSAYERS

CERTIFICATE OF ANALYSIS

TO: Mr. D. K. Bragg
3567 W. 27th Ave.,
Vancouver, B. C.

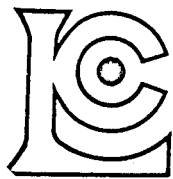
CERTIFICATE NO. 12417
INVOICE NO. 4342
DATE RECEIVED Oct. 13/70
DATE ANALYSED Oct. 20/70

ATTN:

"Boise Creek"

SAMPLE NO.:		PPM Copper	PPM Molybdenum	PPM Zinc
64W	46N	484	540	57
	48	62	30	36
	50	178	38	66
	52	183	34	63
	54	78	24	71
	56	44	27	36
	58	255	52	93
	60	224	15	58
	62	178	24	87
	64	178	53	31
	66	54	48	29
	68	114	78	44
	70	64	62	36
	72	30	5	34
	74	51	15	53
	76	78	3	55
	78	33	0	34
	80	31	0	53
	82	14	0	40
	84	173	2	250
	86	16	0	53
	88	74	0	145
64W	90N	24	0	48
68W	34N	48	8	63
	36	31	5	42
	38	18	5	22
	40	70	5	93
	42	36	7	34
	44	28	2	46
	46	22	17	29
	48	51	26	36
	50	255	21	163
	52	36	14	42
	54	102	27	113
	56	248	21	138
	58	270	24	133
	60	262	22	130
	62	78	1	62
	64	110	7	57
68W	66N	46	5	36
	Std. #23	64	16	110

Certified by *A. H. Steelant*



CHEMEX LABS LTD.

212 BROOKSBANK AVE.
NORTH VANCOUVER, B.C.
CANADA
TELEPHONE: 985-0648

• CHEMISTS • GEOCHEMISTS • ANALYSTS • ASSAYERS

CERTIFICATE OF ANALYSIS

TO: Mr. D. K. Bragg
3567 W. 27th Ave.,
Vancouver, B. C.

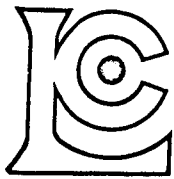
CERTIFICATE NO. 12418
INVOICE NO. 4342
DATE RECEIVED Oct. 13/70
DATE ANALYSED Oct. 20/70

ATTN:

"Boise Creek"

SAMPLE NO.:		PPM Copper	PPM Molybdénium	PPM Zinc
68W 68N		760	122	48
	72	30	0	31
	74	7	0	23
	76	26	0	42
	78	44	1	58
	80	14	0	32
	82	26	0	44
	84	41	0	149
	86	64	0	78
	87	66	0	140
68W 90N		18	1	76
68+50W 70N		96	66	28
69W 30N		42	4	68
	32	20	1	55
69W 34N		90	10	90
72W 31+75N		26	4	32
72W 64+50N		26	19	17
72W 66N		46	21	23
	68	106	23	38
	76	86	1	48
	78	40	2	44
	80	12	0	22
	82	13	1	34
	84	56	1	76
	86	64	0	53
	88	114	1	140
72W 90N		26	0	58
72+50W69N		94	13	42
73W 72N		44	1	36
74W 32N		36	2	40
	72N	46	0	31
	74	36	2	38
74W 76N		26	1	40
76W 42N		56	2	104
	44N	72	11	42
	46	30	4	38
	48	20	2	31
	50	144	24	110
	52	138	26	120
76W 54N		80	5	93
Std. #23		63	16	110

Certified by *S. J. ...*



CHEMEX LABS LTD.

212 BROOKSBANK AVE.
NORTH VANCOUVER, B.C.
CANADA
TELEPHONE: 985-0648

• CHEMISTS • GEOCHEMISTS • ANALYSTS • ASSAYERS

CERTIFICATE OF ANALYSIS

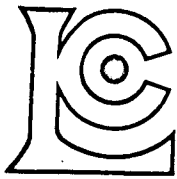
CERTIFICATE NO. 12419
INVOICE NO. 4342
DATE RECEIVED Oct. 13/70
DATE ANALYSED Oct. 20/70

TO: Mr. D. K. Bragg
3567 W. 27th Ave.,
Vancouver, B. C.

ATTN: "Boise Creek"

SAMPLE NO.:		PPM Copper	PPM Molybdenum	PPM Zinc
76W	56N	76	8	53
	58	74	5	78
	60	320	8	295
	62	36	1	53
76N	64N+50	352	15	76
	68	1680	1	10
	70	72	3	46
	72	62	1	42
	74	41	2	36
	76	42	0	44
	78	21	0	38
	80	41	0	50
	82	104	0	98
	84	10	0	38
	86	18	0	32
76W	88N	22	0	38
77W	42N	42	22	48
78N	40N	200	3	307
80W	34N	56	1	98
	36N	63	1	120
	38	30	1	62
	40	30	1	57
	42	352	112	71
	44	262	8	188
	46	62	1	95
	48	84	2	120
	50	183	4	138
	52	100	6	107
	54	42	3	63
	56	34	3	93
	58	320	31	90
	60	218	10	207
	62	42	1	55
	64	34	0	62
	68	437	45	68
	70	1240	2	22
	72	670	14	36
	74	88	11	50
	76	74	1	42
80W	78N	424	5	84
Std. #23		66	17	113

Certified by *J.K. 27/10/70*



CHEMEX LABS LTD.

212 BROOKSBANK AVE.
NORTH VANCOUVER, B.C.
CANADA
TELEPHONE: 985-0648

- CHEMISTS
- GEOCHEMISTS
- ANALYSTS
- ASSAYERS

CERTIFICATE OF ANALYSIS

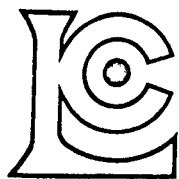
TO: Mr. D. K. Bragg
3567 W. 27th Ave.,
Vancouver, B. C.

CERTIFICATE NO. 12420
 INVOICE NO. 4342
 DATE RECEIVED Oct. 13/70
 DATE ANALYSED Oct. 20/70

ATTN: "Boise Creek"

SAMPLE NO.:		PPM Copper	PPM Molybdenum	PPM Zinc
80W	80N	82	3	44
	82	100	5	55
	84	51	1	57
	86	24	0	36
	88	18	0	46
80W	90N	20	0	21
84W	30N	292	9	133
	32	48	1	87
	34	100	1	153
	36	100	0	40
	38	58	3	71
	40	41	2	84
	42	51	0	42
	44	42	0	63
	46	163	0	84
	48	16	0	25
	50	44	5	48
	52	60	2	55
	54	24	2	36
	56	255	9	138
	58	400	9	90
	60	148	4	87
	62	224	9	207
	64	374	14	200
	66	700	21	265
	68	80	7	101
	70	41	1	38
	72	33	1	29
	74	36	0	32
	76	51	2	38
	78	50	2	48
	80	31	2	38
	82	46	0	38
	84	310	9	173
	86	33	9	48
84W	88N	120	19	334
	Std. #23	63	16	110

Certified by *[Signature]*



CHEMEX LABS LTD.

212 BROOKSBANK AVE.
NORTH VANCOUVER, B.C.
CANADA
TELEPHONE: 985-0648

- CHEMISTS
- GEOCHEMISTS
- ANALYSTS
- ASSAYERS

CERTIFICATE OF ANALYSIS

CERTIFICATE NO. 12421

INVOICE NO. 4359

DATE RECEIVED October 13/70

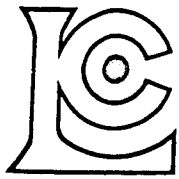
DATE ANALYSED October 22/70

TO: Mr. D. K. Bragg
3567 W. 27th Ave.,
Vancouver, B. C.

ATTN: "Rock Geochem"

SAMPLE NO.:	PPM Copper	PPM Molybdenum	PPM Zinc
ADIT DUMP	152	> 10,000	8
A1	437	90	90
25N 72W	64	12	149
30N 71+50W	114	7	113
90N 81W	40	1	188
48W 72N	33	1	90
52W 73N	60	0	66
87N	452	1	220
52W 87+50N	74	3	126
53W 82N	320	0	183
53W 84N	50	5	107
55W 82N	98	0	107
56W 59N	120	11	178
78N	300	57	95
56W 87N	236	3	138
58W 72N	362	5	149
60W 32N	400	2	194
60W 81N	108	1	90
61W 59N	31	74	32
63W 73N	760	270	78
66W 63+50N	424	35	87
64W 83+50N	46	0	62
64W 45N	292	6	126
64+50W 40N	189	5	48
67W 50N	600	32	58
68W 70N	78	9	62
76W 86N	94	1	117
80W 42N	320	23	34
80W 77N	138	160	29
82W 60N	146	6	71
84W 76N	40	10	58
Std., #23	64	16	110

Certified by



CHEMEX LABS LTD.

212 BROOKSBANK AVE.
NORTH VANCOUVER, B.C.
CANADA
TELEPHONE: 985-0648

• CHEMISTS • GEOCHEMISTS • ANALYSTS • ASSAYERS

CERTIFICATE OF ANALYSIS

CERTIFICATE NO. XR 5506

INVOICE NO. 4331

DATE RECEIVED

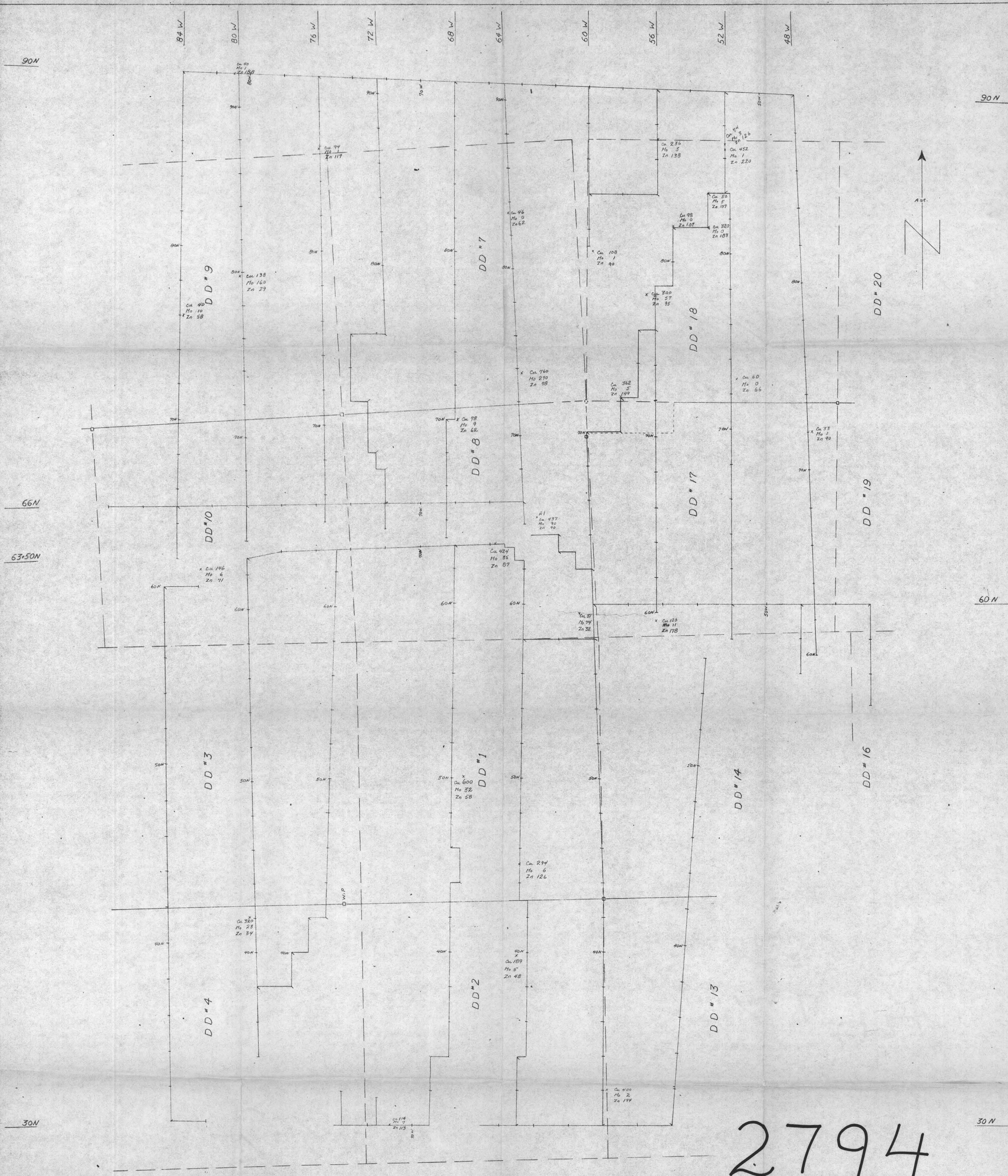
DATE ANALYSED Oct. 19/70

TO: Mr. D. K. Bragg
3567 W. 27th Ave.,
Vancouver, B. C.

ATTN:

SAMPLE NO.:	Oct. 6.
Antimony	Not detected
Arsenic	" "
Beryllium	" "
Bismuth	" "
Cadmium	" "
Cerium	" "
Columbium	" "
Chromium	0.01-0.1%
Cobalt	Not detected
Copper	0.01-0.1%
Gallium	Not detected
Germanium	Not detected
Iron	1-10%
Lead	0.01-0.1%
Lithium	Not detected
Manganese	0.05-0.5%
Mercury	Not detected
Molybdenum	0.1-1%
Nickel	0.01% or less
Silver	0.01% or less
Tantalum	Not detected
Thorium	" "
Tin	" "
Titanium	0.1-1%
Tungsten	Not detected
Uranium	Not detected
Vanadium	0.01% or less
Yttrium	Not detected
Zinc	0.01-0.1%
Zirconium	Not detected

Certified by



2794

M-3

Department of
Mines and Petroleum Resources
ASSESSMENT REPORT
NO. 2794 MAP #3

LEGEND
 - - - - - location line showing position of claim posts,
 claim boundary if claim name
 --- --- --- Traverse lines showing station numbers.
 x Cu 100 Mo 1 Zn 90 Rock chip sample sites
 Cu, Mo, Zn, Geochem analysis in ppm.

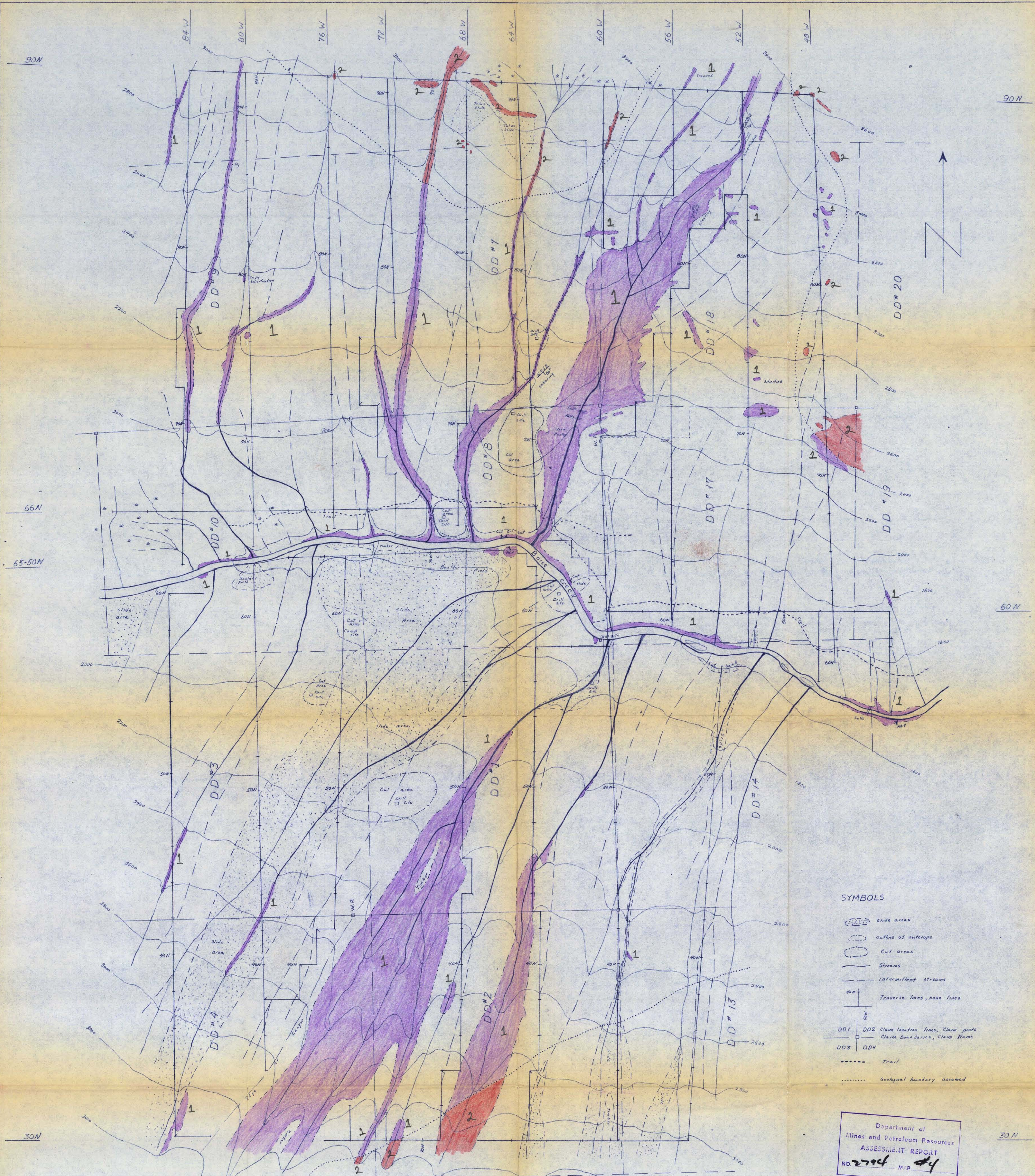
170

ROCK CHIP SAMPLE ANALYSIS
 GEOCHEMICAL ANALYSIS Cu, Mo, Zn

DD CLAIMS
 BOISE CREEK B.C.
 Scale 1" = 200'

To accompany GEOLOGICAL GEOCHEMICAL REPORT by D.K. BRASS
 on the DD Claims, Boise Creek B.C. New Westminster Mining Division
 Dated Nov 8, 1970

Work by: D.K. Brass Date: Dec. 1970
 Drawn by: DK Brass

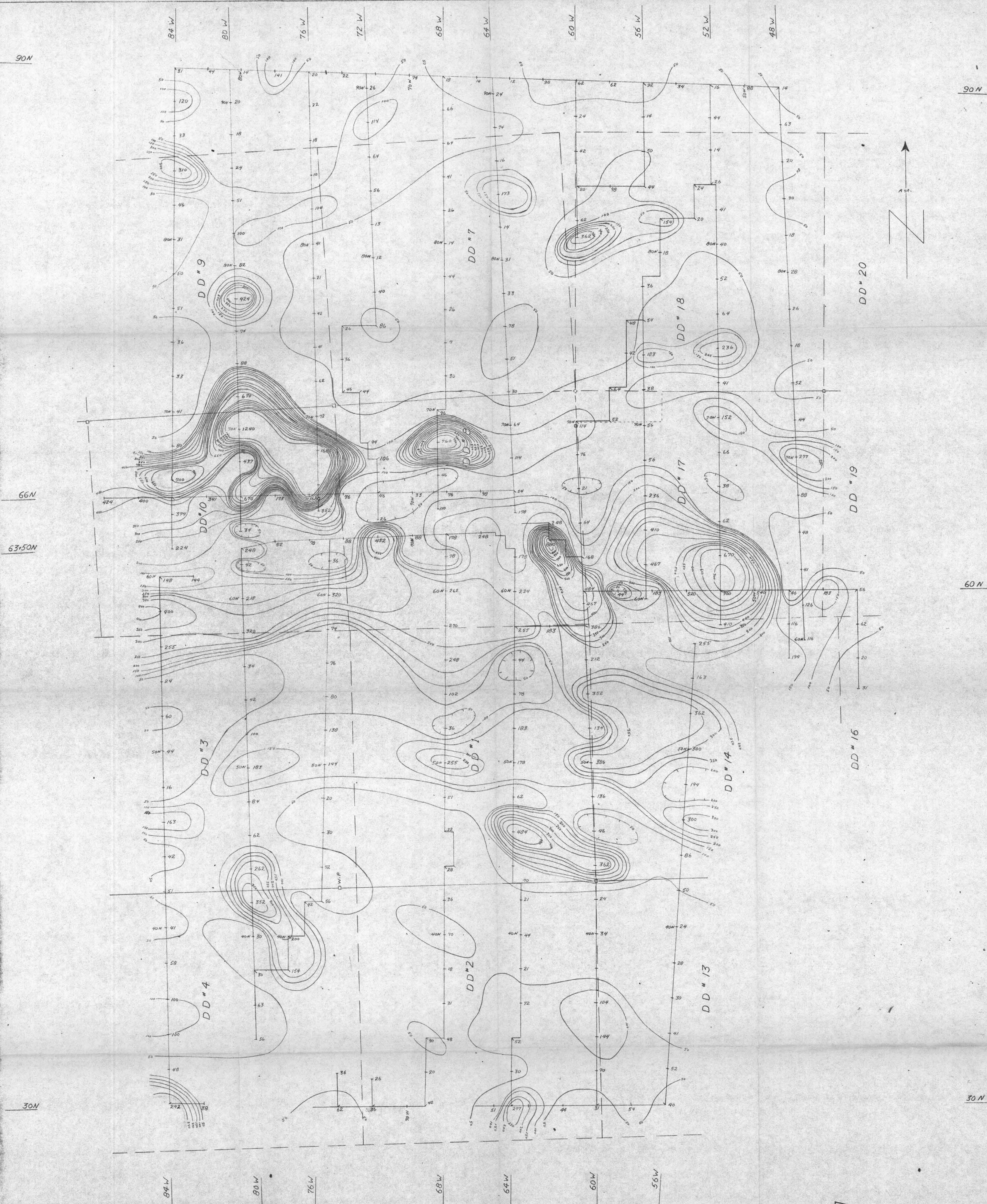


- SYMBOLS**
- Slide areas
 - Outline of outcrops
 - Cut areas
 - Streams
 - Intermittent streams
 - Traverse lines, base lines
 - DD1 DD2 Claim location lines, Claim posts
 - Claim boundaries, Claim Name
 - DD3 DD4
 - Trail
 - Geological boundary assumed

Department of
Mines and Petroleum Resources
ASSESSMENT REPORT
No. 2744 M.P. 44

- LEGEND**
- 2 Coast Plutonic Rocks Hornblende diorite, diorite, granite diorite and silica enriched facies of each
 - 1 Harrison Lake Formation (Middle Jurassic) Porphyritic meta andesite, meta-dacite, meta-sediments and argillite, including metamorphosed & granitized elements of each. Pyritic content 1% plus, intense fracturing & silicification. Chloritization. Disseminated Chalcopyrite, Malachite, Numerous quartz veins carrying sulphides

GEOLOGY MAP
DD CLAIMS
BOISE CREEK B.C.
Scale 1" = 200'
To accompany 'GEOLOGICAL & GEOCHEMICAL REPORT' by D.K. BRASS
on the DD Claims, Boise Creek, B.C. New Westminster
Mining Division dated Nov 8, 1979
Work by: D.K. Brass Date: Dec. 1979
Drawn by: D.K. Brass



LEGEND

DD#4 DD#3
 Location line showing position of claim posts,
 claim boundary & claim name

DD#2 DD#1
 Traverse lines showing station numbers,
 Soil Sample sites & Cu. analysis in p.p.m.

Contour Showing Cu. in p.p.m.
 Interval 50 p.p.m.

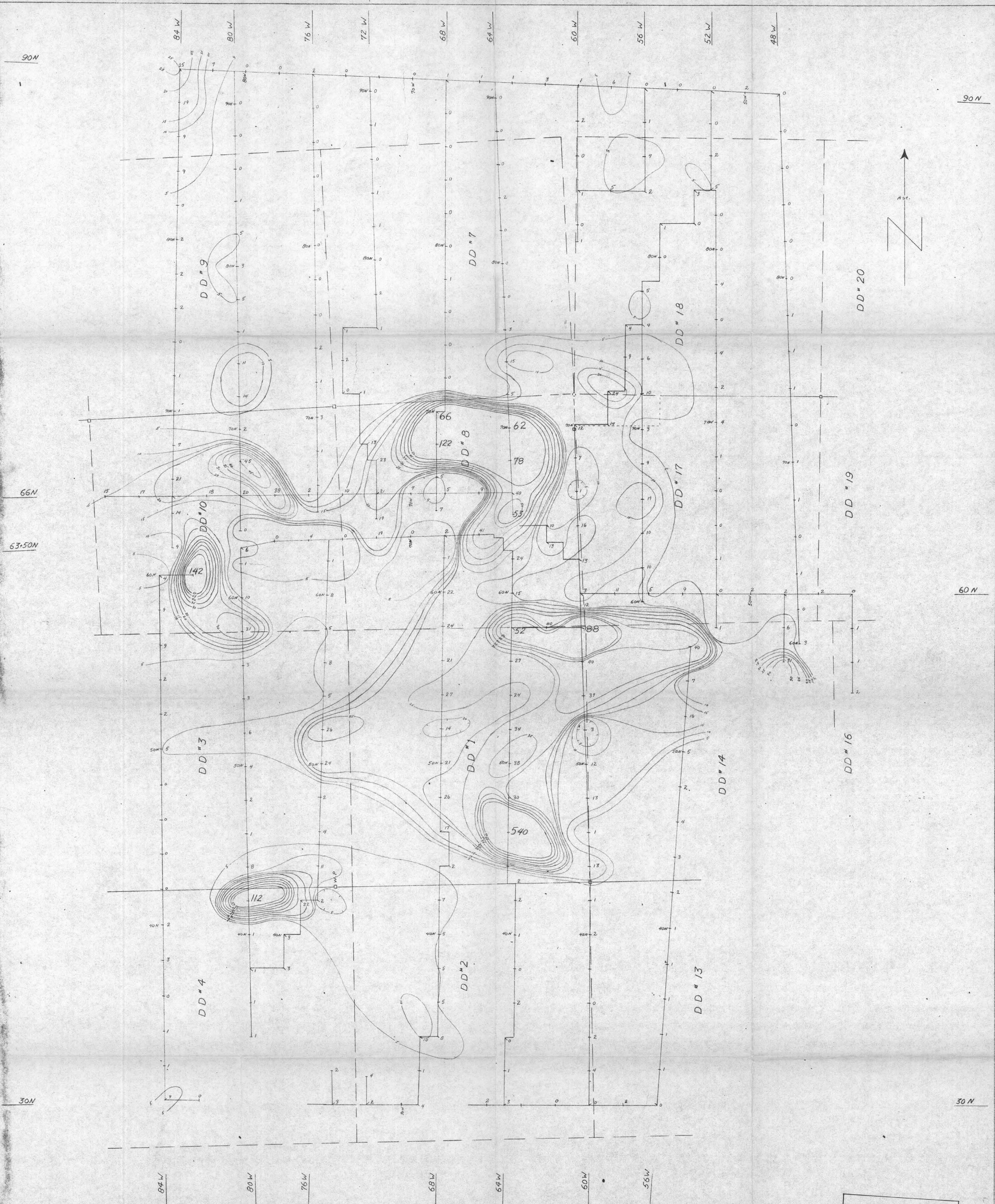
Department of
 Mines and Petroleum Resources
ASSESSMENT REPORT
 NO. 2794 MAP #5

GEOCHEMICAL SOIL SURVEY (Cu. p.p.m.)

DD CLAIMS
 BOISE CREEK B.C.
 Scale 1" = 200'

To accompany GEOLOGICAL & GEOCHEMICAL REPORT by D.K. BRASS
 on the DD Claims, Boise Creek B.C., New Westminster Mining Division
 Date: Nov. 3, 1970

Work by: D.K. Brass Date: Dec. 1970
 Drawn by: O.K. Brass



Department of
Mines and Petroleum Resources
ASSESSMENT REPORT
NO. 2794 MAP #2

LEGEND

Location line showing position of claim posts,
claim boundary & claim name

Traverse lines showing station numbers,
Soil Sample Sites & Mo analysis in ppm.

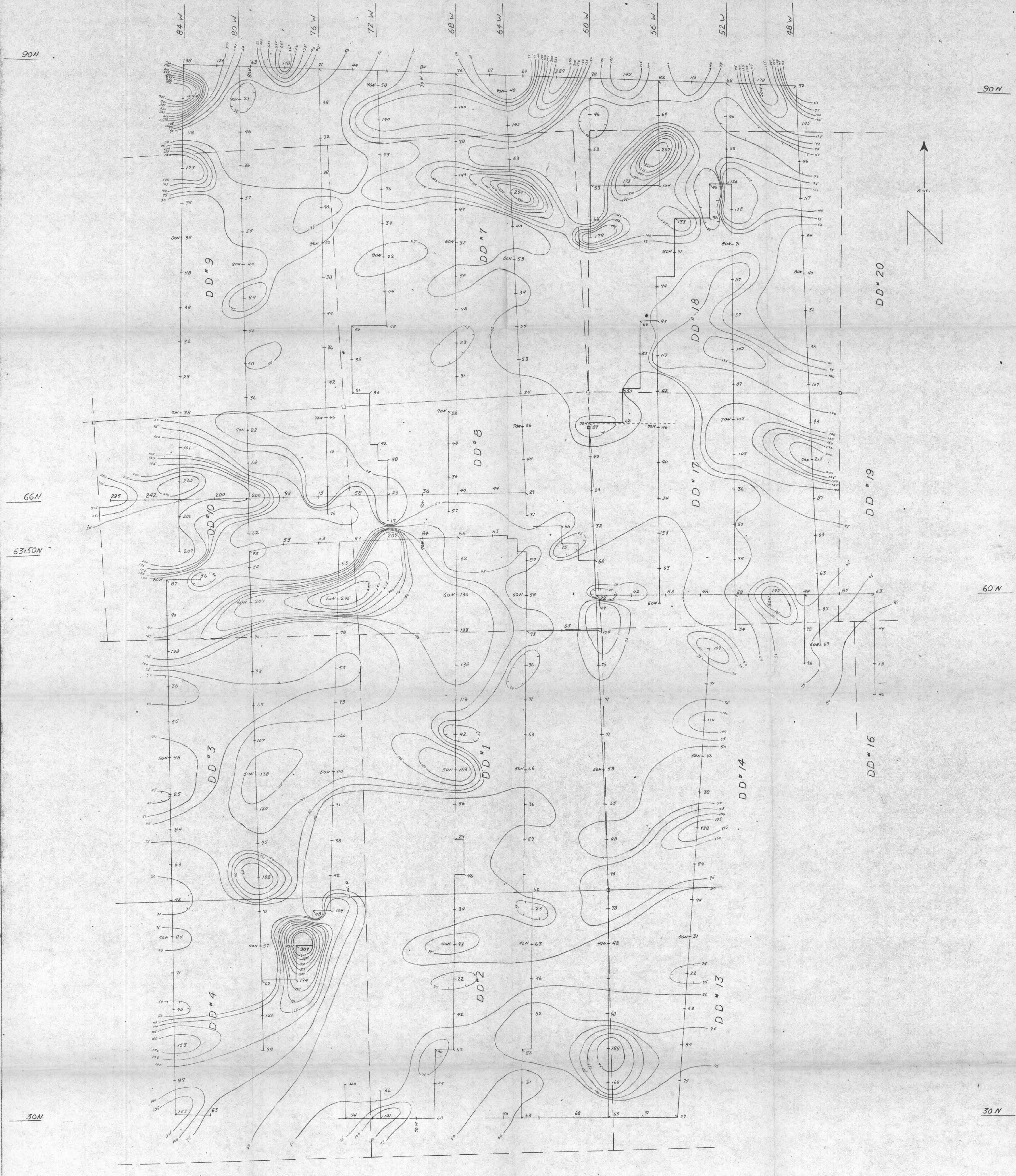
Contour Showing Mo in ppm.
Interval 5 ppm. up to 50 ppm.
Injection of values above 50 ppm.

GEOCHEMICAL SOIL SURVEY (Mo. ppm)

DD CLAIMS
BOISE CREEK B.C.
Scale 1" = 200'

To accompany GEOLOGICAL & GEOCHEMICAL REPORT by D.K. BRASS
on the DD CLAIMS, Boise Creek B.C. New Westminster Mining Division
Dated Nov 9, 1978

Work by: D.K. Brass Date: Dec. 1978
Drawn by: D.K. Brass



Department of
Mines and Petroleum Resources
ASSESSMENT REPORT
NO. 2794 MAP #7

LEGEND
 Location line showing position of claim posts,
claim boundary & claim name
 Traverse lines showing station numbers,
soil sample sites & Zn analysis in ppm.
 Contour showing Zn in ppm.
 Interval 25 ppm.

GEOCHEMICAL SOIL SURVEY (Zn ppm)
DD CLAIMS
 BOISE CREEK B.C.
 Scale 1" = 200'
 To accompany GEOCHEMICAL REPORT by D.K. BRAGG
 on the DD Claims, Boise Creek B.C., New Westminster Mining Division
 Dated Nov. 8, 1970
 Work by: D.K. Bragg Date: Dec. 1970
 Drawn by: D.K. Bragg