

2803

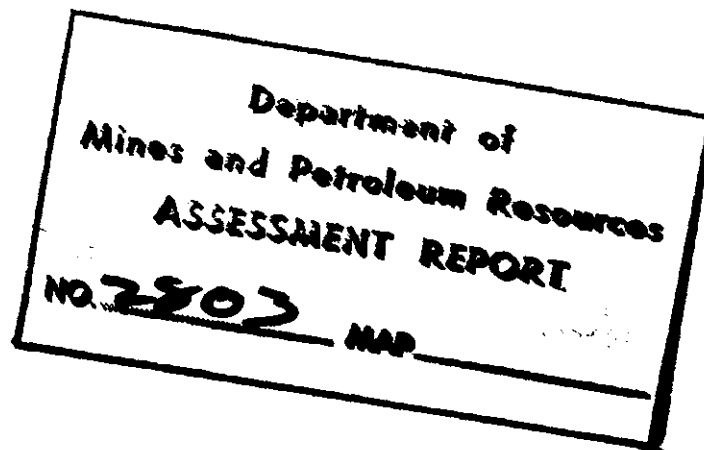
HAFUNO RESOURCES LTD. (N.P.L.)
Vancouver, British Columbia, Canada

Geochemical Survey - Teek Group
Clinton Mining Division

51° - 123°

920/SW

September 29, 1970



FRANKLIN L. C. PRICE
PROFESSIONAL MINING ENGINEER

318 THE BURRARD BUILDING • VANCOUVER 5, CANADA • TELEPHONE 685-6733 • AREA CODE 604 • CABLE PRICEO VANCOUVER
206 HOOKER HOUSE • 7 ANGEL PLACE • SYDNEY, AUSTRALIA • TELEPHONE 28-4613 • CABLE PRICEO, SYDNEY

September 29, 1970

Hafuno Resources Ltd. (N. P. L.),
1250 - One Bentall Tower,
Vancouver 1, B. C.

Dear Sirs:

The geochemical work has been completed on your group of claims in the Taseko Lake area. The samples were taken along a grid pattern from the "Teek" group of mineral claims. The samples were air dried; then sent to Vancouver for appraisal.

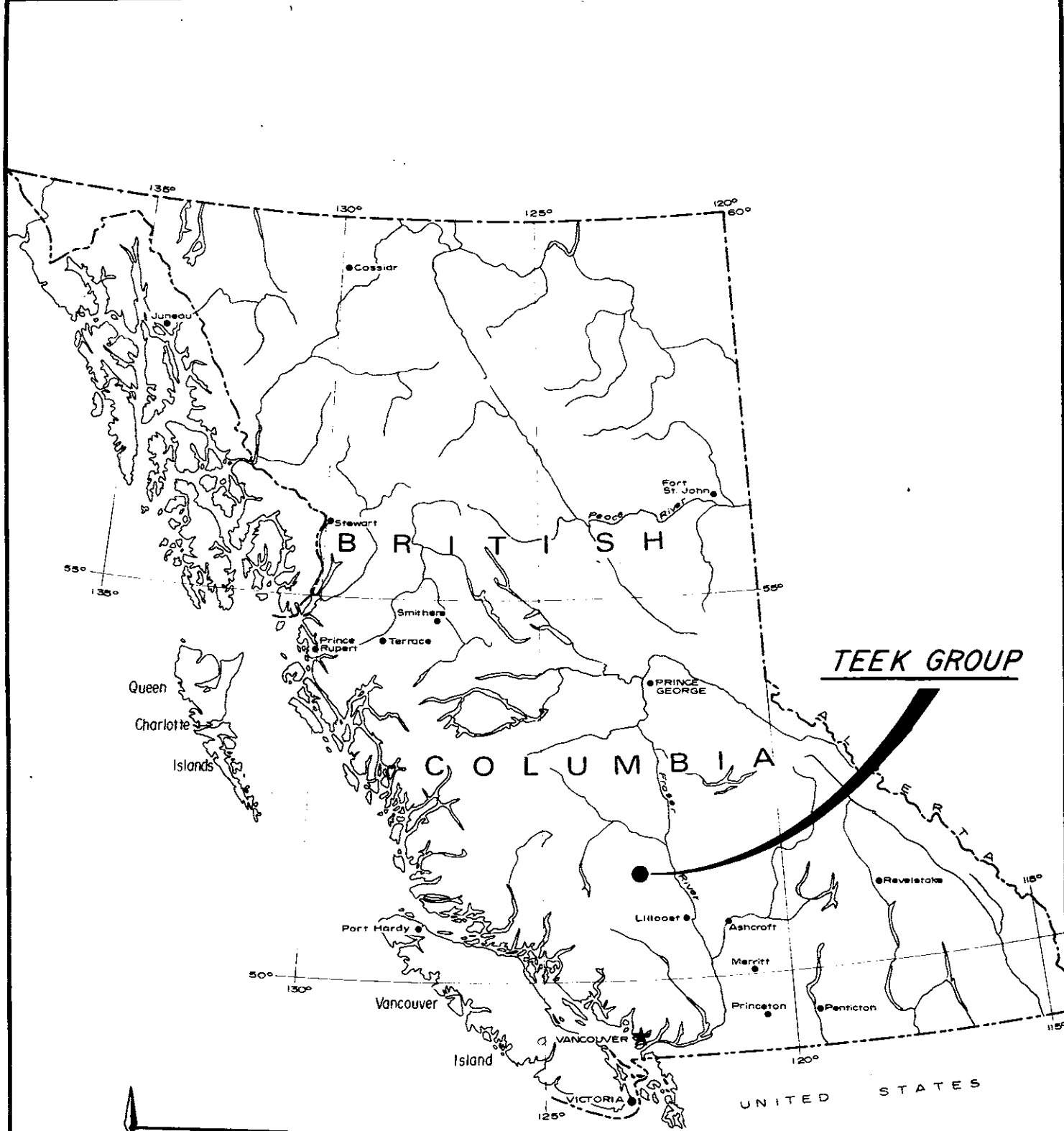
The results are interesting and encouraging as shown on the attached drawing.

Respectfully submitted,



Franklin L. C. Price.

flcp/e



Department of
 Mines and Petroleum Resources
ASSESSMENT REPORT
 NO. **2803** MAP **#1**

FRANKLIN PRICE
 PROFESSIONAL MINING ENGINEER

HAFUNO RESOURCES LTD.
LOCATION MAP

TEEK GROUP
 CLINTON MINING DIVISION

SCALE: 1" = 136 Miles

DATE: SEPT. 1970

SUMMARY:

The claims are underlain with a coarse grained granodiorite that has been altered with pyritization. The pyrite is highly weathered along the high cliffs to the East and a chemical survey was carried out to determine if any of the sulphide mineralization is chalcopyrite.

The chemical survey was a direct assay for copper and encouraging results were located; i. e., above 100 ppm were recorded along the southern portion of the claims.

GEOCHEMICAL SURVEY:

The survey was done by taking soil samples from the "B" horizon every 100 feet along a surveyed line.

The base line was established 0 + 0 running east and west, and cross lines were established every 700 feet along this line. The samples were taken from the cross lines.

The samples were air dried and shipped to Vancouver for approval on an atomic absorption machine for copper. The sample taken for the test was -80 mesh material and dissolved with hot nitric acid for testing on the machine. The results are in parts per million and these have been shown on the drawing at each station.

SURVEY RESULTS:

The plotted results show a broad band of interesting copper assays along the southern portion of the claim group. On inspection, it was found that this area is flat, so that surface creep is not expected to cause this copper trend. The amount of copper found shows that mineralization is present.

Additional work will be required to determine the amount of copper in the immediate area.

ENGINEERING:

The drafting of the survey map requires an engineering explanation because of the "marked scale". The survey conducted was of a reconnaissance nature covering 5,000 feet north and south and 7,700 feet east and west. The scale was adjusted to make the map a smaller size. The scale is 100' - 1" North and South and 350' - 1" east and west.



Hafuno
A. R. C. V.

21	22	2	1
19	20	4	3
17	18	6	5
15	16	8	7
13	14	10	9
	12	11	

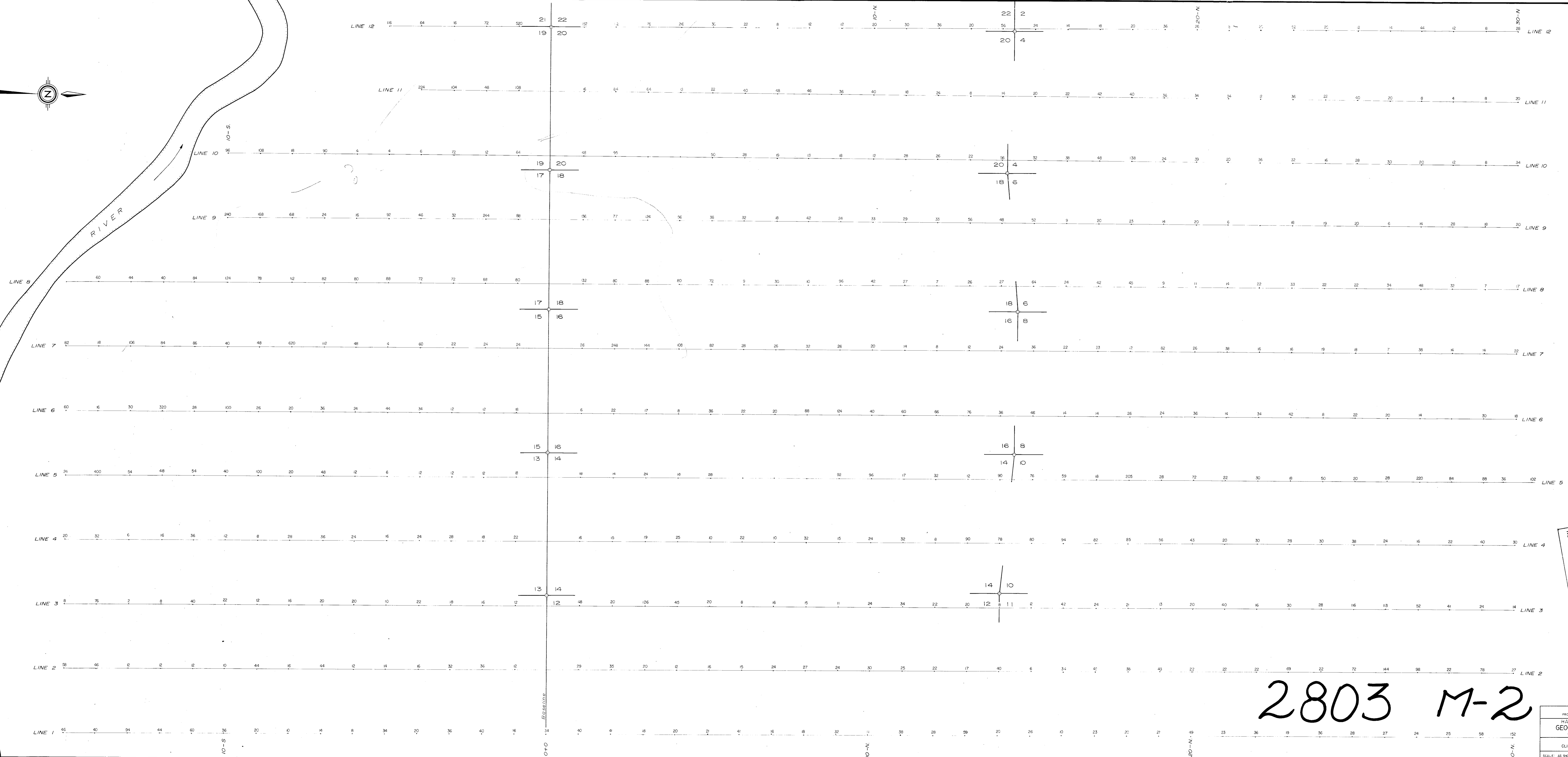
Department of
Mines and Petroleum Resources
ASSESSMENT REPORT
NO. 2803 MAP #3

FRANKLIN PRICE PROFESSIONAL MINING ENGINEER	
HAFUNO RESOURCES LTD.	
TEEK GROUP CLINTON MINING DIVISION	
SCALE: 1" = 1500'	DATE: SEPT. 1970

N.E. Scale N-S: 1"=100'
E-W: 1"=350'



RIVER



Department of
Mines and Petroleum Resources
ASSESSMENT REPORT
NO. 2803 M-2

SCALES

1"=100'
1"=350'

2803 M-2

FRANKLIN PRICE
PROFESSIONAL ENGINEER
HAFUND RESOURCES LTD
GEOCHEMICAL SURVEY
COPPER IN PPM
TEEK GROUP
CLINTON MINING DIVISION
SCALE: AS SHOWN DATE: SEPT 1970