

SIGNAL HOLDINGS LTD.

92I/7E & W

LINE-CUTTING REPORT

IT Group of Mineral Claims

Nicola Mining Division

2921



|          |    |    |    |    |    |    |    |    |    |    |
|----------|----|----|----|----|----|----|----|----|----|----|
| 17       | 15 | 13 | 11 | 9  | 7  | 5  | 3  | #1 |    |    |
| 18       | 16 | 14 | 12 | 10 | 8  | 6  | 4  | #2 |    |    |
| IT GROUP |    |    |    |    |    |    |    |    |    |    |
| 39       | 37 | 35 | 33 | 31 | 29 | 27 | 25 | 23 | 21 | 19 |
| 40       | 38 | 36 | 34 | 32 | 30 | 28 | 26 | 24 | 22 | 20 |

REY CREEK

REY LAKE

EVE CREEK

EVE LAKE

INDEX MAP  
FOR LINE CUTTING OF IT GROUP.

2921

Department of  (blank)

Mines and Petroleum Resources

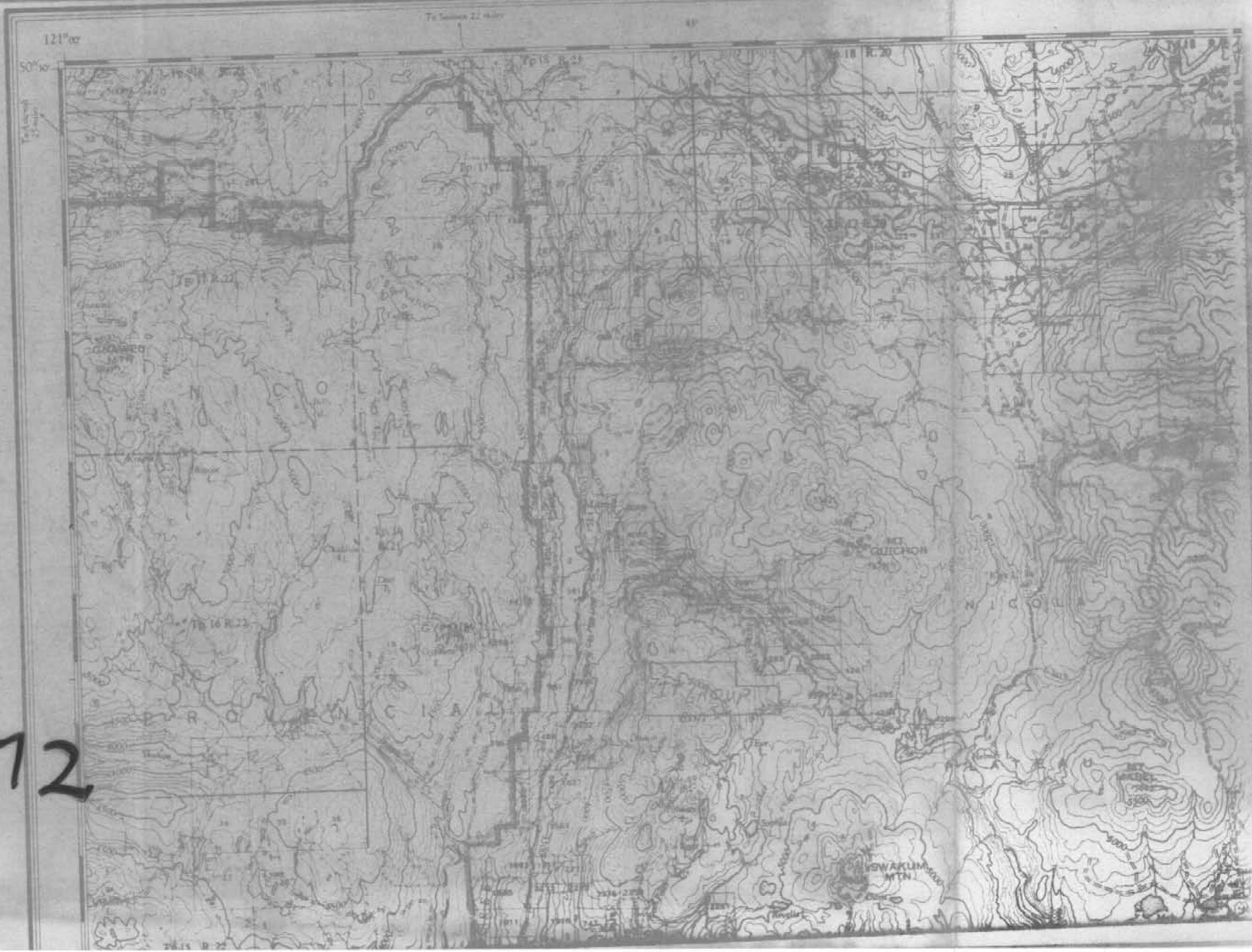
ASSESSMENT REPORT

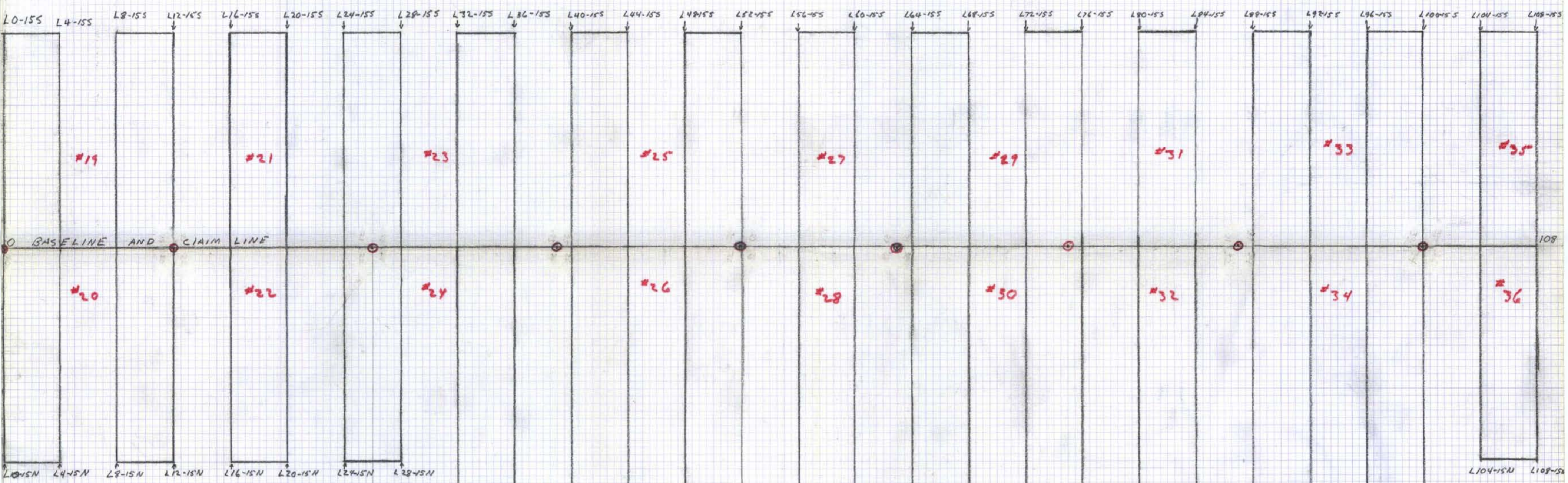
PNO 2921 MAP #1

M-1

Department of  
Mines and Petroleum Resources  
ASSESSMENT REPORT  
NO. 2921 MAP # 2

INDEX MAP  
COVERING  
LINE  
CUTTING  
FOR I.T. GROUP  
92I/7E  
9  
92I/7W M2  
2921

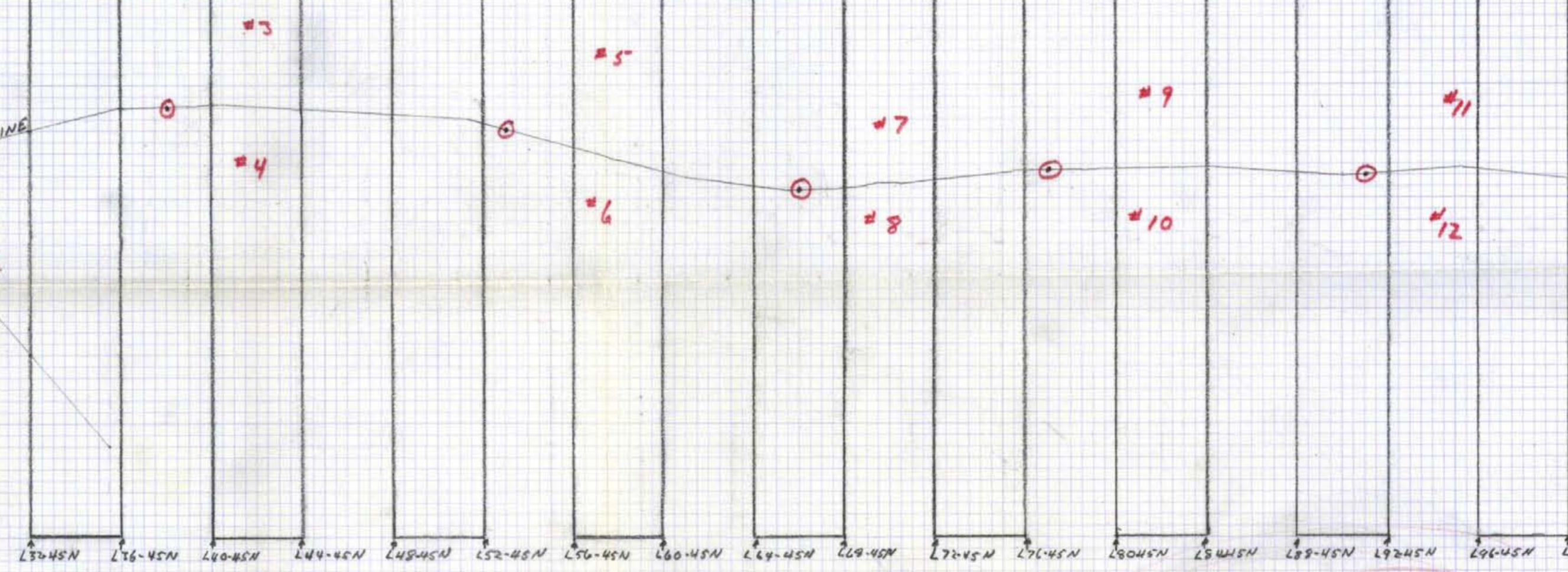




IT GROUP  
 REF MAP 92I/7E  
 92I/7W  
 CLAIM Pests @  
 CLAIM #1-12 19-36



CLAIM LINE



Department of  
 Mines and Petroleum Resources  
 ASSESSMENT REPORT  
 NO. 2921 MAP #3

2921

M-3

276"  
 12" = 6000' (435 km)  
 = 1" = 500' blocks