

RETURN TO
DEPARTMENT OF MINES AND PETROLEUM RESOURCES
VICTORIA, BRITISH COLUMBIA



2961

LINE-CUTTING REPORT on the BB Claims
for
Hecla Mining Company of Canada Ltd.
Work done Sept. 12 to Oct. 14, 1970
Skeeter Lake Area

1048/7W

Jean Alix Co Ltd,
Box 886,
Kamloops, B.C.

October 26-1970

2961

Re: Number of man-days spent on line cutting contract made in
Skeeter Lake, Schaft Creek Area,
Property of Hecla Mining Company of Canada Ltd,
1177 West Hasting St,
Vancouver, B.C.

Name	From	to	Man-Days
Gilles Grondin	Sept 12	Oct 14	32
Fernand Landry	Sept 12	Oct 14	32
Johnny Roberts	Sept 12	Oct 14	32
Michel Proulx	Sept 12	Oct 14	32
Rosaire Neault	Sept 12	Oct 14	32
Jean Pierre Neault	Sept 12	Oct 14	<u>32</u>
			192 days

We, Jean Alix Company Limited, Certifie that the above figures are correct, and we remain,

Yours very truly,
Jean Alix Co Ltd
Eddy Beauvais
Eddy Beauvais,
Western Representative.

Declared before me at the *City* of *Vancouver*, in the Province of British Columbia, this *12* day of *March*, 1971, A.D.

John Finney

L. Jeannotte
A Commissioner for taking Affidavits within British Columbia or
A Notary Public in and for the Province of British Columbia.
SUB-...

Jean Alix Co Ltd
 Box 886,
 Kamloops, B.C.

October 26-1970

Property: Skeeter Lake, Schaft Creek Area.

Charge to: Hecla Mining Company of Canada Ltd,

Address: 1177 West Hasting St,
 Vancouver, B.C.

Base Line North side Length 140+00
 Base Line South side " 130+00
 Base Line No 2 65+00

	West	East		West	East
Line ON	40+00	26+37	Line 5S	40+00	35+40
5N	36+62	30+45	10S	25+55	34+56
10N	40+00	27+58	15S	40+00	30+76
15N	40+00	28+22	20S	40+00	40+00
20N	40+00	23+48	25S	40+00	37+48
25N	34+52	20+21	30S	40+00	35+32
30N	2+87	23+72	35S	40+00	31+54
35N	37+00	23+46	40S	40+00	27+16
40N	35+78	29+03	45S	40+00	31+00
45N	23+30	40+00	50S	5+28	22+00
50N	20+25	34+33	55S	40+00	15+28
55N	28+82	27+88	60S	23+60	12+63
60N	15+00	40+00	65S	40+00	12+00
65N	11+00	40+00	70S	38+70	18+42
70N	12+00	40+00	75S	40+00	11+00
75N	10+56	39+00	80S	40+00	10+16
80N	10+50	40+00	85S	40+00	10+00
85N	11+00	40+00	90S	40+00	6+84
90N	40+00	22+31	95S	40+00	4+35
95N	27+26	40+00	100S	40+00	5+94
100N	29+00	35+00	105S	38+55	5+54
105N	40+00	34+00	110S	38+00	5+00
110N	40+00	34+00	115S	40+00	8+26
115N	40+00	38+74	120S	40+00	9+42
120N	40+00	37+00	125S	40+00	9+90
125N	40+00	35+40	130S	40+00	29+70
130N	40+00	35+20		<u>96,988</u>	<u>49,966</u>
135N	40+00	40+00			
140N	40+00	40+00			
	86,548	96,538			
	86,548				

Pickets Line Total 68.9 Miles at \$ 115.00 Total to be paid

(see reverse)

\$ 7,923.00

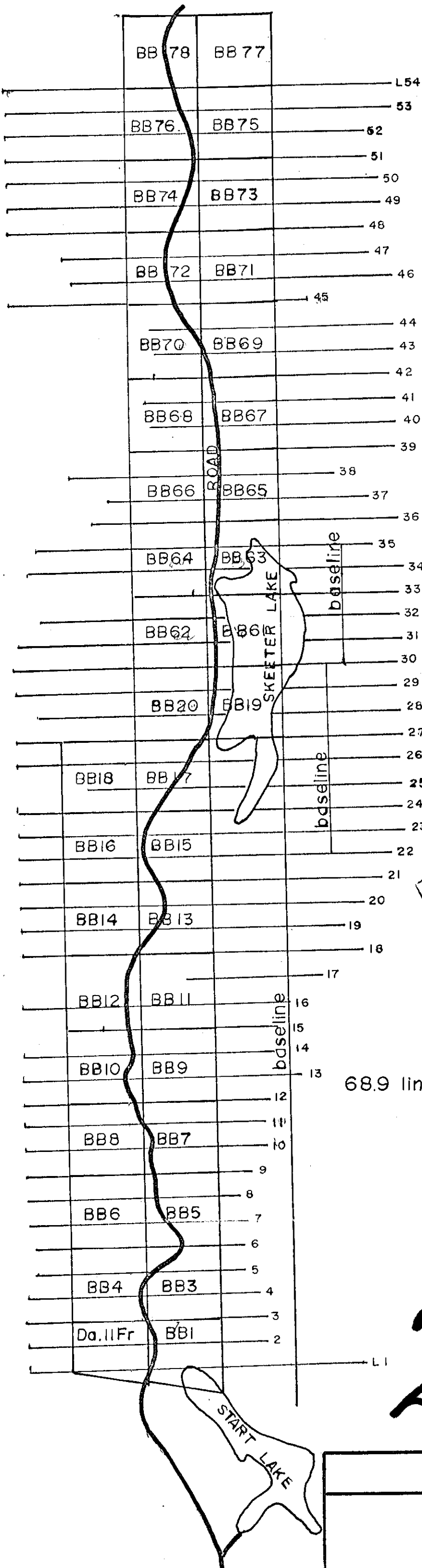
By Eddy Beauvais.

Eddy Beauvais

Declared before me at the *City*,
of *Vancouver*, in the
Province of British Columbia, this *12*
day of *March*, 19*71*, A.D.

Justified

A. Jeanette
~~A Commissioner for taking Affidavits within British Columbia or~~
~~A Notary Public in and for the Province of British Columbia~~



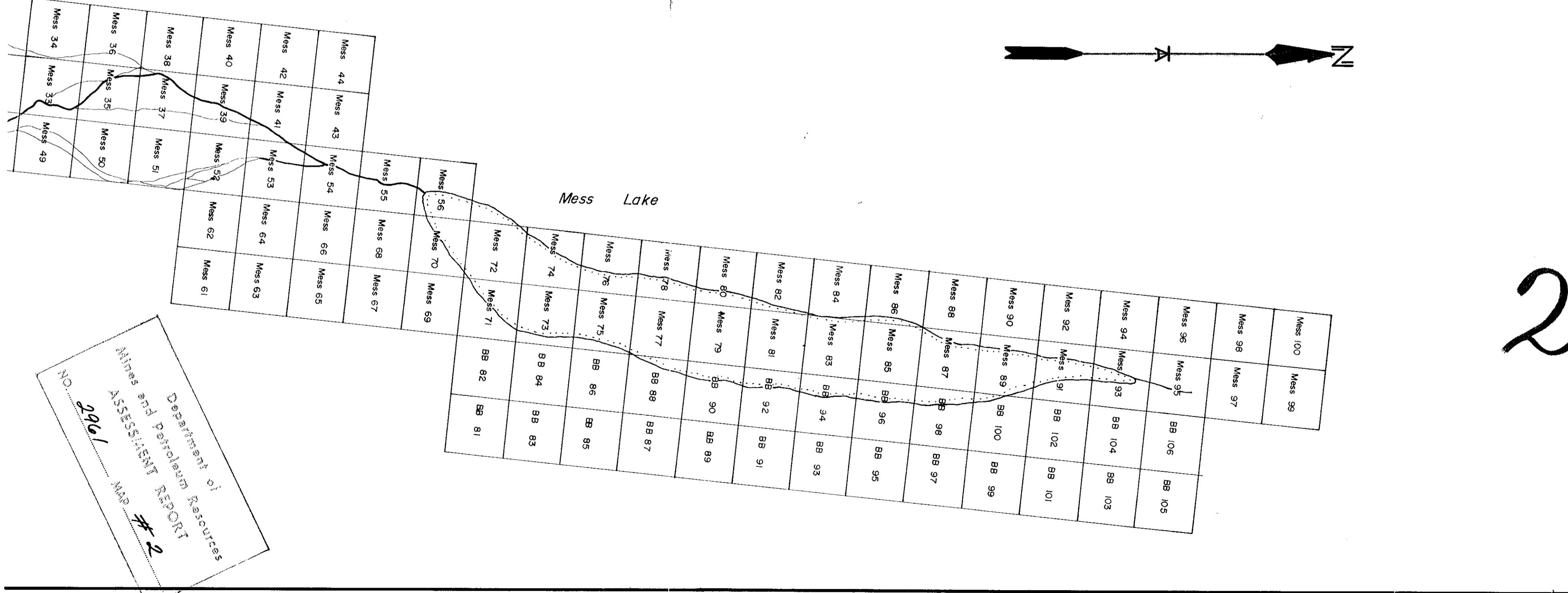
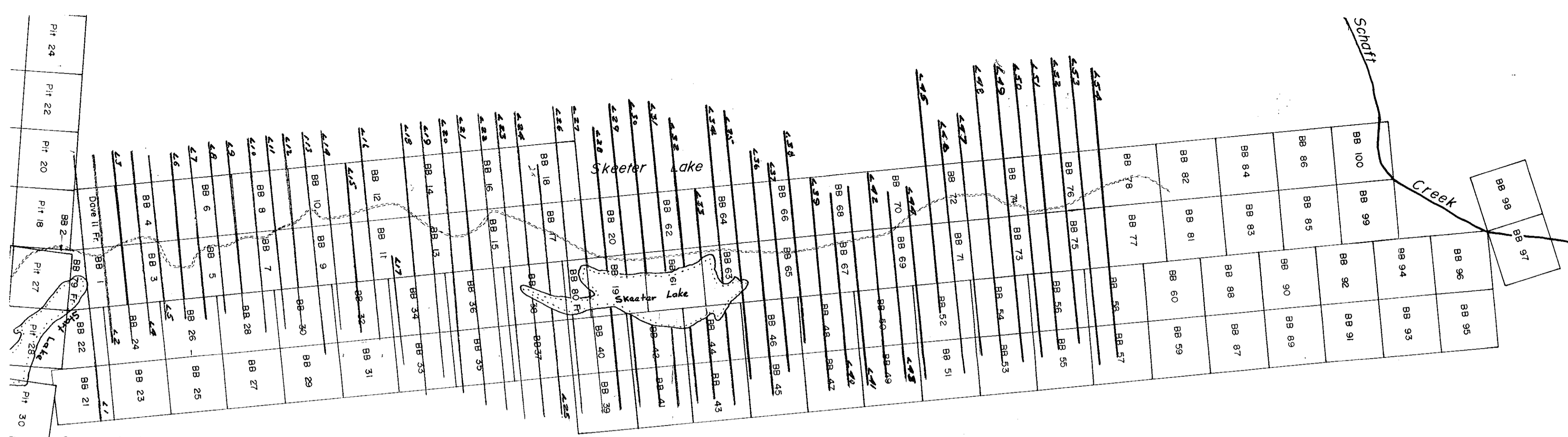
Department of
Mines and Petroleum Resources
ASSESSMENT REPORT
NO. 2961 MAP #1

M-1
2961

HECLA OPERATING CO.		
LIARD PROJECT		
SCHAFT CREEK, B.C.		
LINE CUTTING		
SKEETER LAKE AREA		
by		
Jean Alix Co. Ltd.		
Scale 1"=2000	Date Mar 12/71	DWG. NO.

2961 M-2

HECLA OPERATING CO.		
LIARD PROJECT SCHAFT CREEK, B.C.		
CLAIM PLAN		
Scale: 1" = 2000'	Date: February 1971	DWG No.



Department of
Mines and Petroleum Resources
ASSESSMENT REPORT # 2
MAP NO. 2961