

LINE-CUTTING REPORT

PAM, CREST, KEN, COP, and ALPINE Mineral Claims

Kamloops Mining Division

for

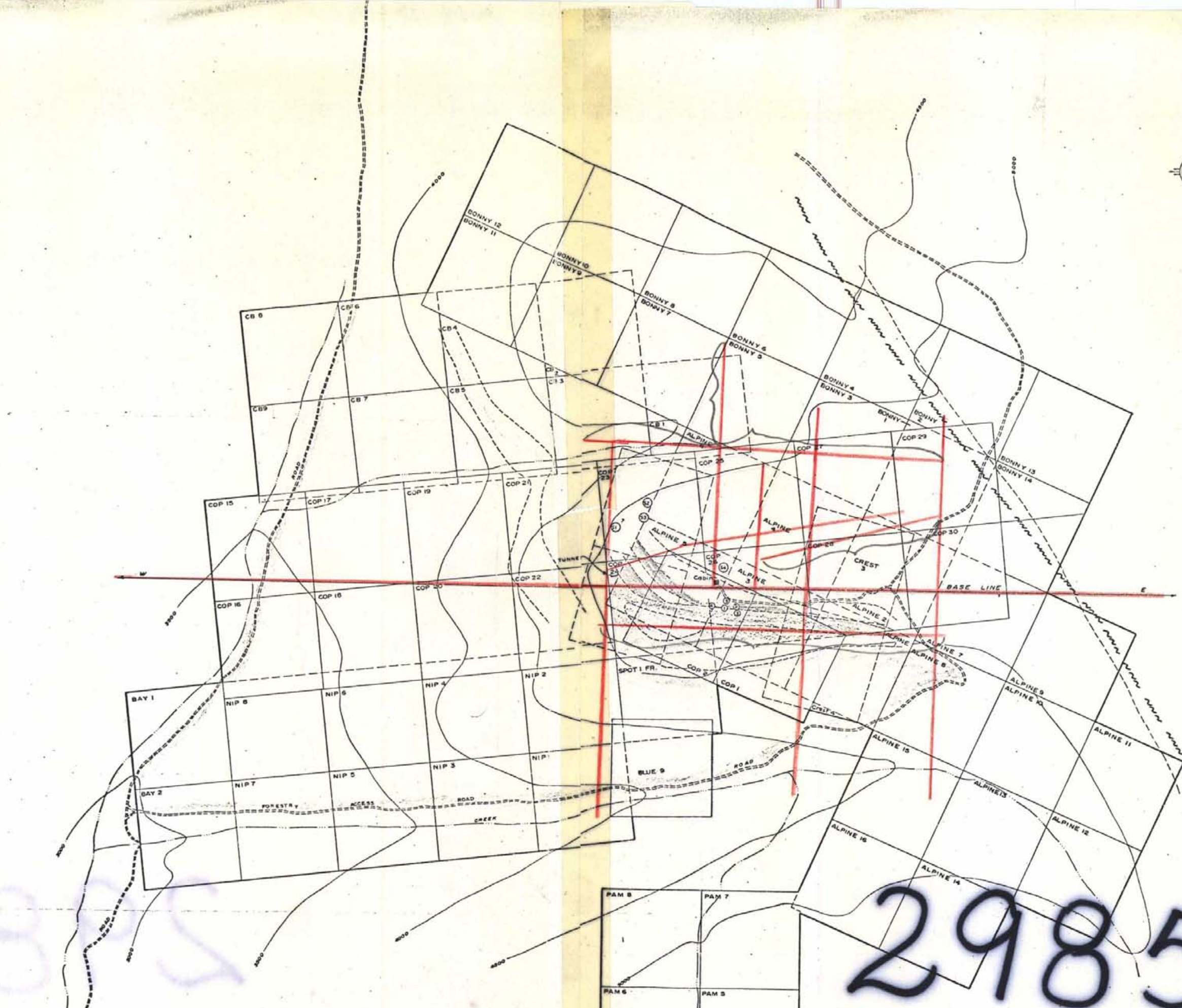
Santana International Resources Ltd. (N.P.L.)

Nov. 18, 1970

92J/5E

2985





— cut & picketed lines

LEGEND

- Cretaceous Agglomerates
- Carbonated Shale (M-1)
- Limey Sediments Permian?
- Minor Intrusives - Silts & Jurassic?
- Andesite Volcanics
- Main Lytton gabbro

SOIL SAMPLES		
	ppm Cu	ppm Ag
(1)	140	1.0
(2)	820	1.1
(3)	300	0.8
(4)	240	0.9

ROCK SAMPLES

- (1) 49126 - 5' - Quartz Swingers - 0.04% Cu
- (2) 49127 - 4' - Shale - 1.24% Cu
- (3) 49128 - 5' - Shale - 0.24% Cu
- (4) 49129 - 18' - Silicified - 1.42% Cu
- (5) 49130 - Grab of Brown Carbonated Material - 2.44% Cu

NOTE: Claim Locations Approximate



*[Signature]*  
18 Nov. 1970

Department of  
Mines and Petroleum Resources  
ASSESSMENT REPORT  
NO. 2985 MAP #1

SANTANA INTERNATIONAL RESOURCES LTD. (N.P.L.)  
KAMLOOPS B.C. 92 I / 5E  
MAP SHOWING CLAIM GROUPS &  
APPROXIMATE PARTIAL DISTRIBUTION OF  
ROCK TYPES BASED ON FIELD OBSERVATIONS

SCALE  
0 300' 300' 600'  
TO ACCOMPANY REPORT BY J.A. MITCHELL  
OCT-1970