

Department of
Mines and Petroleum Resources
ASSESSMENT REPORT

NO. 2997 MAP

GEOCHEMICAL REPORT

on the

TIE No. 1 & 2; BRAW 3 & 4

Mineral Claims

Record Numbers 10859-10862, incl.

in the Alberni Mining Division

18 miles north of Tofino

49° 23' North Latitude

125° 45' West Longitude

#1 Claim Map

#2 A

#3 B

#4 C

2997

W.G. Stevenson & Associates Limited

Vancouver, British Columbia.

May 11, 1971.

INTRODUCTION

The attached resume of the geochemistry procedures, with maps showing the location and assay values of samples collected, with a cost distribution for this survey is being submitted to satisfy the assessment requirements on 4 mineral claims (Tie 1 & 2; Braw 3 & 4; Record Numbers 10859, 10860, 10861 & 10862).

GEOCHEMICAL SURVEY

Prior to 1970 a reconnaissance geochemical sampling program was conducted over the subject property. During the 1970 field season 72 samples were collected for copper determination from 3 anomalous areas.

These samples were collected with a spade from a depth of approximately 1 foot or from the B horizon.

The samples were air dried in the field prior to submission to commercial laboratories in North Vancouver. Some of the samples were analyzed by Bonder Clegg & Co., others by Chemex Labs.

The laboratory procedures were similar. The samples were completely dried then put through an 80 mesh screen. The -80 fraction was used. Copper was extracted with hot aqua regia then analyzed by atomic absorption.

The attached maps marked Plate I with insets A, B and C will show the claim outline, the location of the 3 areas, the position of the samples and the copper assay in parts per million within each of these areas.

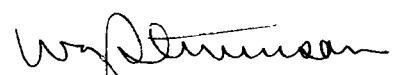
The assay data revealed that 63% of the samples assayed 30 ppm or less and 24% of the samples assayed 100 ppm or over. Only one sample shown on inset A and one shown on inset C had copper content above 100 ppm.

The assay values from inset B showed 14 samples with copper content above 100 ppm, one of these with .12% copper.

COST DISTRIBUTION

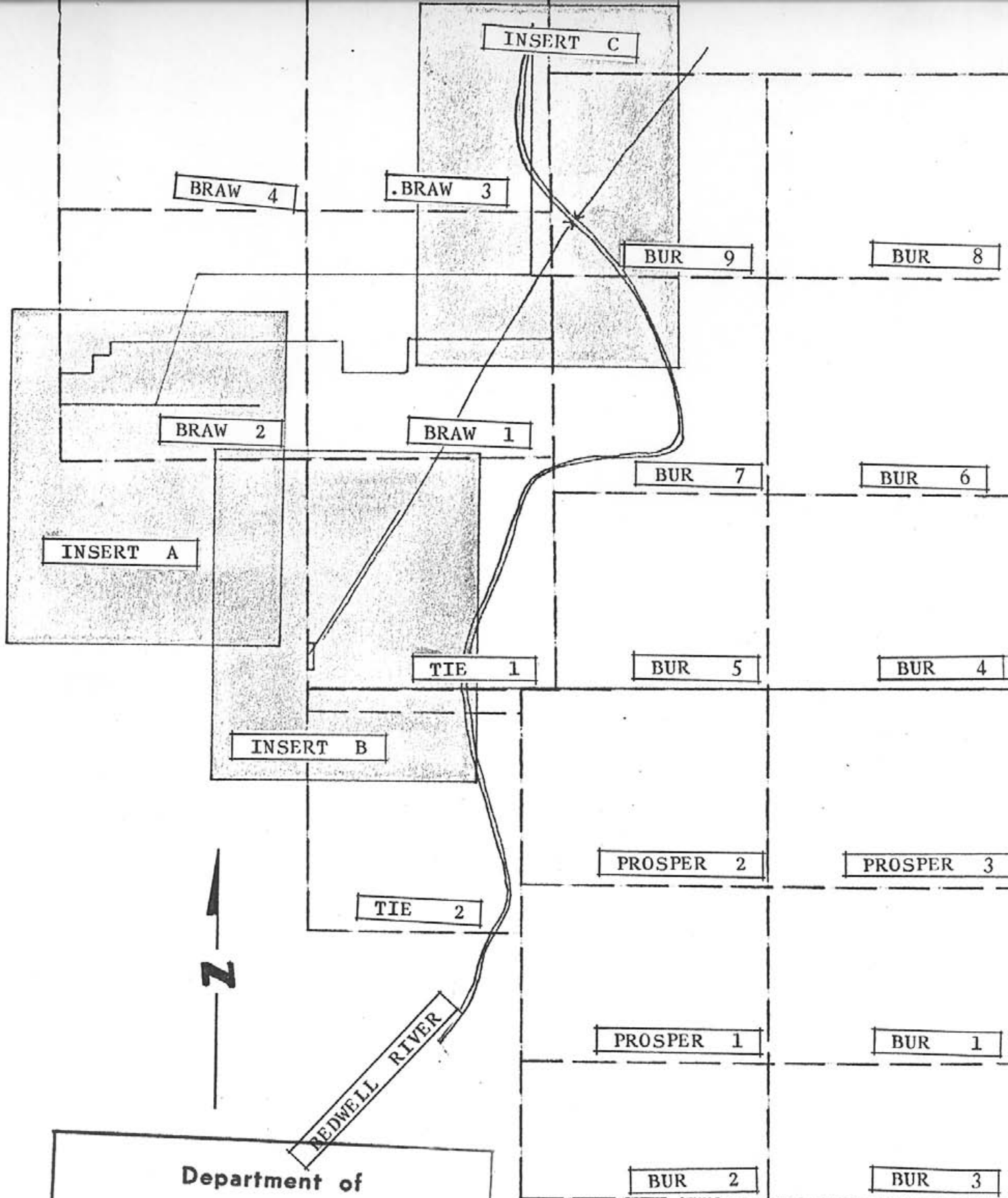
Sampling 2 men 1 week	
W. Guppy @ 25.00/day	\$ 175.00
Assistant @ 20.00/day	140.00
Assaying 72 samples @ 1.20	86.40
Map and Report	<u>75.00</u>
TOTAL	<u>\$ 476.40</u> =====

Respectfully submitted
W.G. Stevenson & Associates Limited



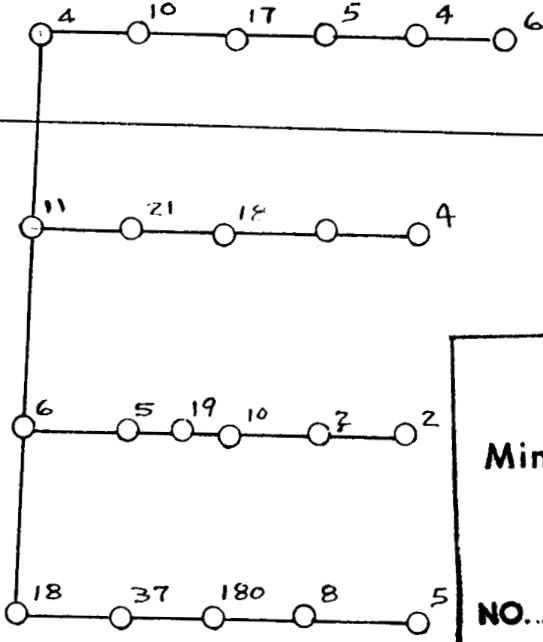
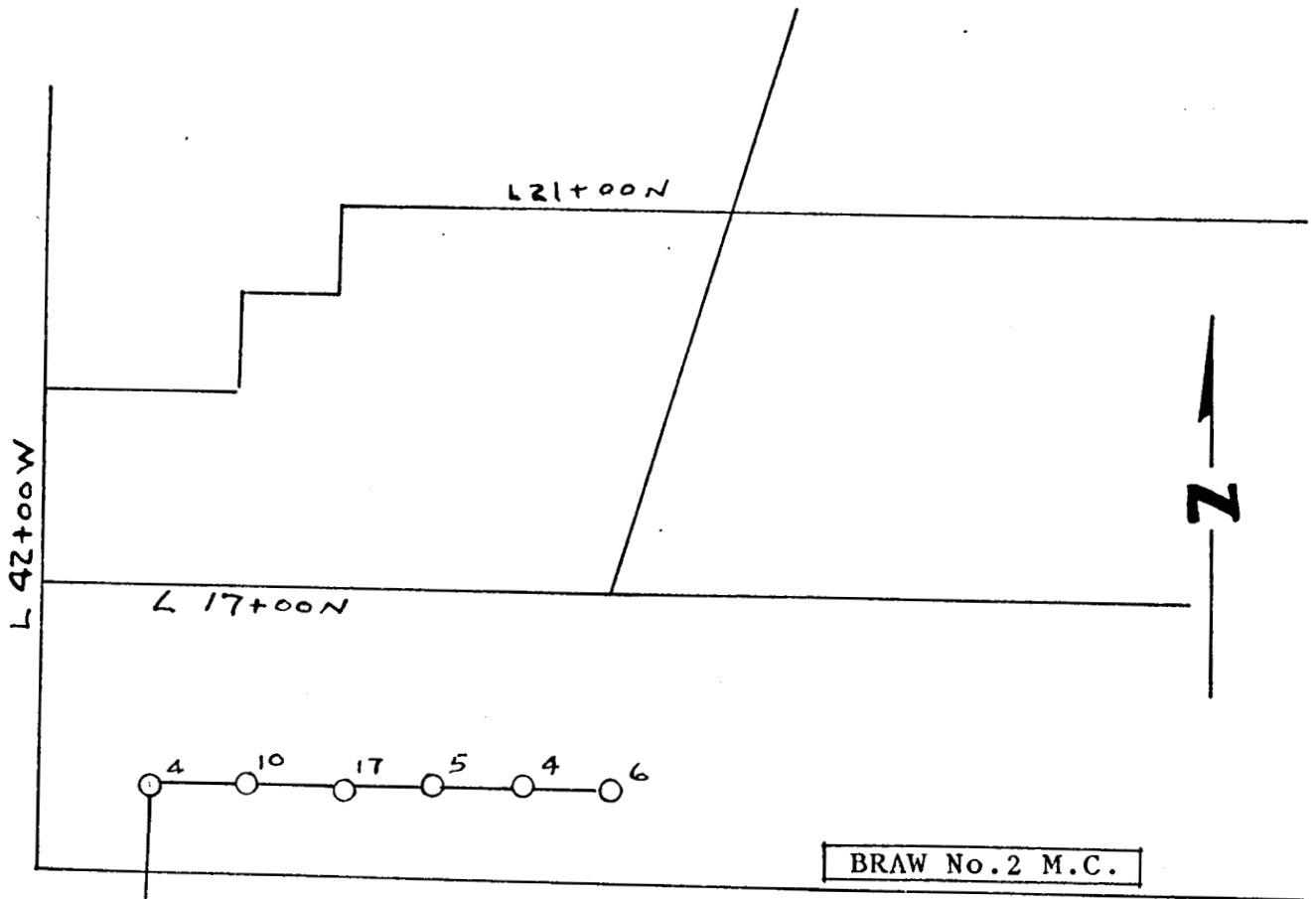
W.G. Stevenson, P.Eng.

Vancouver, B.C.
May 11, 1971.



Department of
 Mines and Petroleum Resources
 ASSESSMENT REPORT
 NO. 2991 MAP #1

PLATE I
 Claim Map
 Showing location of areas sampled
 To accompany affidavit on
 Application for Certificate of Work
 WALTER GUPPY
 Alberni Mining Division
 Scale 1" = 800 feet.



Department of
 Mines and Petroleum Resources
ASSESSMENT REPORT
 NO. 2997 MAP #2

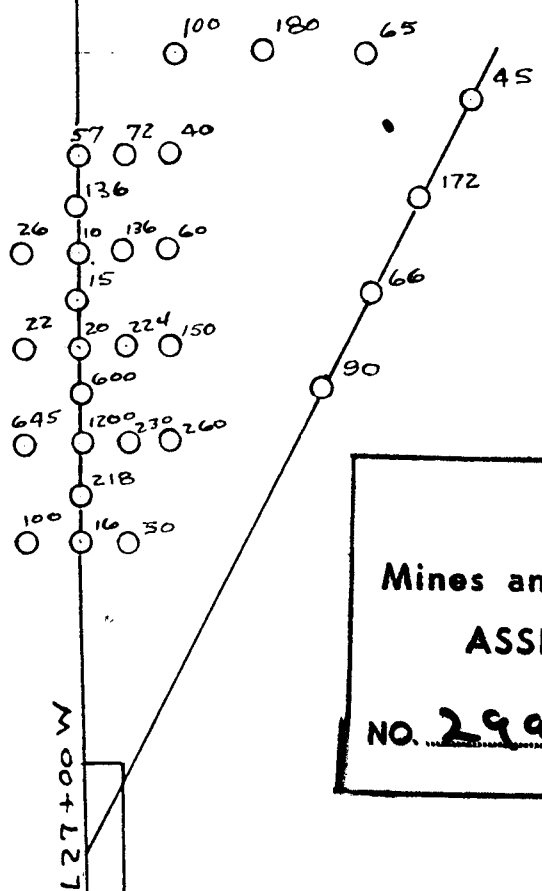
INSERT A
 To accompany
 Affidavit on application
 for Certificate of Work

 Walter Guppy
 Alberni Mining Division
 Scale 1" = 200 feet.

BRAW No.2 M.C.

BRAW No.1 M.C.

TIE No.1 M.C.



Department of
 Mines and Petroleum Resources
 ASSESSMENT REPORT
 NO. 2997 MAP # 3

L 00 + 00 N

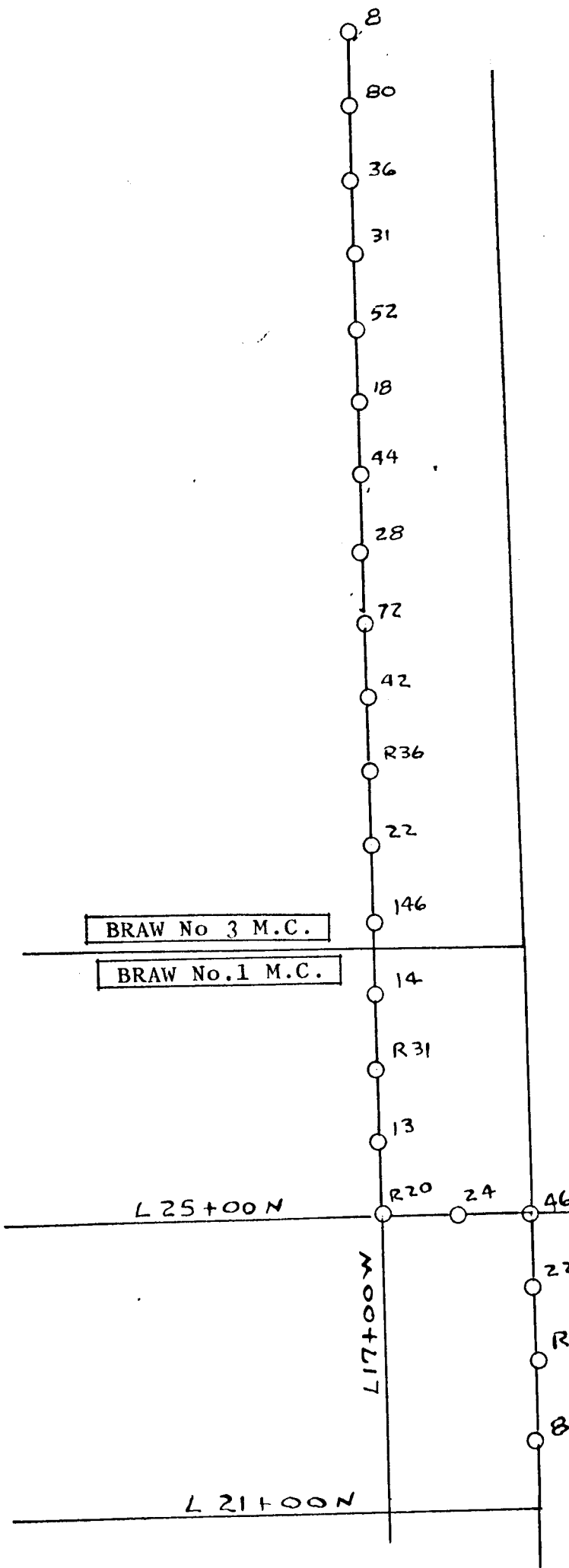
TIE No.1 M.C.

TIE No.2 M.C.

INSERT B
 To accompany
 Affidavit on application
 for Certificate of Work

 Walter Guppy
 Alberni Mining Division

 Scale 1" = 200 feet.



BRAW No 3 M.C.

BRAW No.1 M.C.

Department of
 Mines and Petroleum Resources
 ASSESSMENT REPORT
 NO. 2997 MAP #4

BUR No. 9 M.C.

BUR No. 7 M.C.

INSERT C
 To accompany
 Affidavit on application
 for Certificate of Work
 / Walter Guppy
 Alberni Mining Division
 Scale 1" = 200 feet.

