

3059

GEOPHYSICAL REPORT  
FOR  
SUMMIT OILS LTD.

Park Claim Group, S.E. of Owen Lake  
Latitude  $54^{\circ} 02'N$  Longitude  $126^{\circ} 41'W$

AUTHOR: Glen E. White, Chief Geophysicist

P. ENGINEER: W. G. Stevenson

DATE OF WORK: April 29 and 30, 1971

*934/2E*

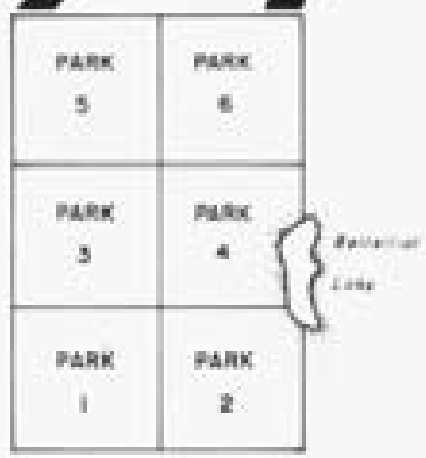
Department of  
Mines and Petroleum Resources  
ASSESSMENT REPORT  
NO. 3059 MAP.....

C O N T E N T S

	<u>PAGE</u>
Introduction .....	1
Location and Access .....	1
Property .....	1
Survey Specifications    Survey Grid .....	1
The Magnetometer Survey .....	1-2
Data Presentation .....	2
Discussion of Results .....	2
Conclusion .....	3
Instrument Specifications    Magnetometer .....	4
Certificate    Glen E. White, Chief Geophysicist .....	5
Certificate    W. G. Stevenson, P. Engineer .....	6

I L L U S T R A T I O N S

Figure 1	Location and Claim Map
Figure 2	Magnetic Intensity contour Map



- L E G E N D
- Outline of Claim
  - Shore Line
  - Creeks & Rivers
  - Area Surveyed

**SUMMIT OILS LTD.**  
 BELLELIOT LAKE PROPERTY  
 PARK CLAIM GROUP

**LOCATION AND CLAIMS MAP**

SCALE - LOCATION MAP: 1" = 50 MILES - CLAIMS MAP: 1" = 100'



Department of  
 Mines and Petroleum Resources  
**ASSESSMENT REPORT**

NO. **3059** MAP **4/1**

## INTRODUCTION

During the period April 29 and 30, 1971, Tri-Con Exploration Surveys Ltd., on behalf of Summit Oils Ltd. conducted a program of line cutting and ground magnetometer surveying over a group of mineral claims known as the Park Claim Group, Omineca Mining Division, Province of British Columbia.

The purpose of the ground magnetometer survey was to try and locate any magnetic patterns indicative of structure or changes in lithology which would aid in directing any further exploration.

## LOCATION AND ACCESS

The Park Claims are situated by Bellelliot Lake some 2 miles east of Owen Lake, Omineca Mining Division, Latitude  $54^{\circ} 02'N$ , Longitude  $126^{\circ} 41'W$  N.T.S. 93L/2.

Access to the property is by the Morice River Road leading south from Houston, B.C. for a distance of some 31 miles to the Nadina Mines site. The claim group is then approximately 2 miles southeast of the mine.

## THE PROPERTY

The Park Claim Group, property of Summit Oils Ltd. consists of six contiguous mineral claims listed as follows:

Park 1 - 6

## SURVEY SPECIFICATIONS

### Survey Grid

A chain and compass survey grid was established coincident with the ground magnetometer survey. East-West traverse lines were turned off every 500 feet from a north-south baseline and flagged at 100 foot intervals.

### The Magnetometer Survey

The magnetometer survey was conducted using a Sharpe MF-1 Fluxgate magnetometer. This instrument measures the vertical component of the earth's mag-

netic field to an accuracy of 20 gammas. Corrections for diurnal variation were made by tying into previously established base stations at intervals not exceeding one and one half hours. Readings were taken at 100 foot intervals along the traverse lines.

#### Data Presentation

Some 22,000 line feet of traverse grid was surveyed by the magnetometer method. The results are presented in contour form (Figure 2) at a contour interval of 100 gammas and a horizontal scale of 1"=400 feet.

#### DISCUSSION OF RESULTS

The magnetic intensity data varied from a minimum of 1500 gammas to a high of some 4500 gammas in the northern section of the property, however, the remainder of the survey area showed only moderate variations around a mean of some 3700 gammas.

The magnetic data has been correlated with Aeromagnetic Map 5301G (93L/2) Owen Lake, B.C. and a reconnaissance Geochemical Report by G. L. Anselmo and W. G. Stevenson, P. Engineer for Summit Oils Ltd. on the Spook and Park Claim Groups, December 1969.

Aeromagnetic Map 5301G indicates that the claim group is situated on the southern flank of a prominent elliptical shaped magnetic high. The center of this magnetic high is situated immediately northwest of the northwest corner of the claim group. The ground magnetometer survey detected a portion of the high magnetic intensity values as indicated by the 4500 gamma readings. It also delineated a nearby magnetic low which may be part of a magnetic dipole affect not detected by the airborne survey.

Several inferred faults are shown on the magnetic contour map Figure 2. The principle fault direction would appear to be in the NE-SW direction parallel to large regional magnetic linears shown on Map 5301G approximately one mile NW of the claim group. A limited amount of reconnaissance geochemical surveying, as discussed in the above report was completed over the Park Claim Group in 1969. This survey located a slight response in copper on claim 3 and a slight increase in zinc response on claims 1 and 3.

CONCLUSION

A ground magnetometer survey was completed over the Park Claim Group, Owen Lake Area, Omineca Mining Division, B.C. on behalf of Summit Oils Ltd.

The ground magnetometer survey indicated that the claim group is situated on the southern flank of a magnetic high which appears to be exhibiting a local dipole effect. The magnetic intensity data also shows several magnetic linears which appear to be biased in a NE-SW and a NW-SE direction parallel to known major regional faults. The copper and zinc reconnaissance geochemical data showed only slight responses over the claim group.

Respectfully submitted,

TRI-CON EXPLORATION SURVEYS LTD.



Glen E. White, B.Sc.  
Chief Geophysicist

A P P E N D I X

Instrument Specification

MAGNETOMETER

A Instrument

- (a) Type - Fluxgate
- (b) Make - Sharpe MF-1

B Specifications

- (a) Measurement - Vertical Magnetic Field
- (b) Range -  $\pm 100$  K gammas in 5 ranges
- (c) Sensitivity - Maximum 20 gammas per scale division
- (d) Accuracy -  $\pm 10$  gammas

C Survey Procedures

- (a) Method - One and one half hour loops
- (b) Corrections - (i) Base  
(ii) Diurnal
- (c) Station relationship - each station read for intensity of vertical magnetic field.

C E R T I F I C A T I O N

TO WHOM IT MAY CONCERN:

I, GLEN ELMO WHITE, of the City of Richmond in the Province of British Columbia, hereby certify:

1. That I am a Geophysicist and reside at 117-641 Gilbert Rd. in Richmond, B.C.
2. That I studied Geophysics and Geology and graduated from the University of British Columbia with the degree of Bachelor of Science.
3. That I have been engaged in Mining Exploration for eight years.
4. That I do not have, nor do I expect to receive, either directly or indirectly, any interest in the Park Mineral Claims or in the securities of Summit Oils Ltd.
5. That this report is based on information derived from a ground magnetometer survey carried out by Tri-Con Exploration Surveys Ltd. under my supervision.

Dated this 31 day of May 19 71.



G. E. White, B.Sc.  
Chief Geophysicist



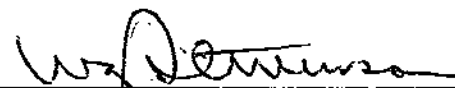
CERTIFICATE

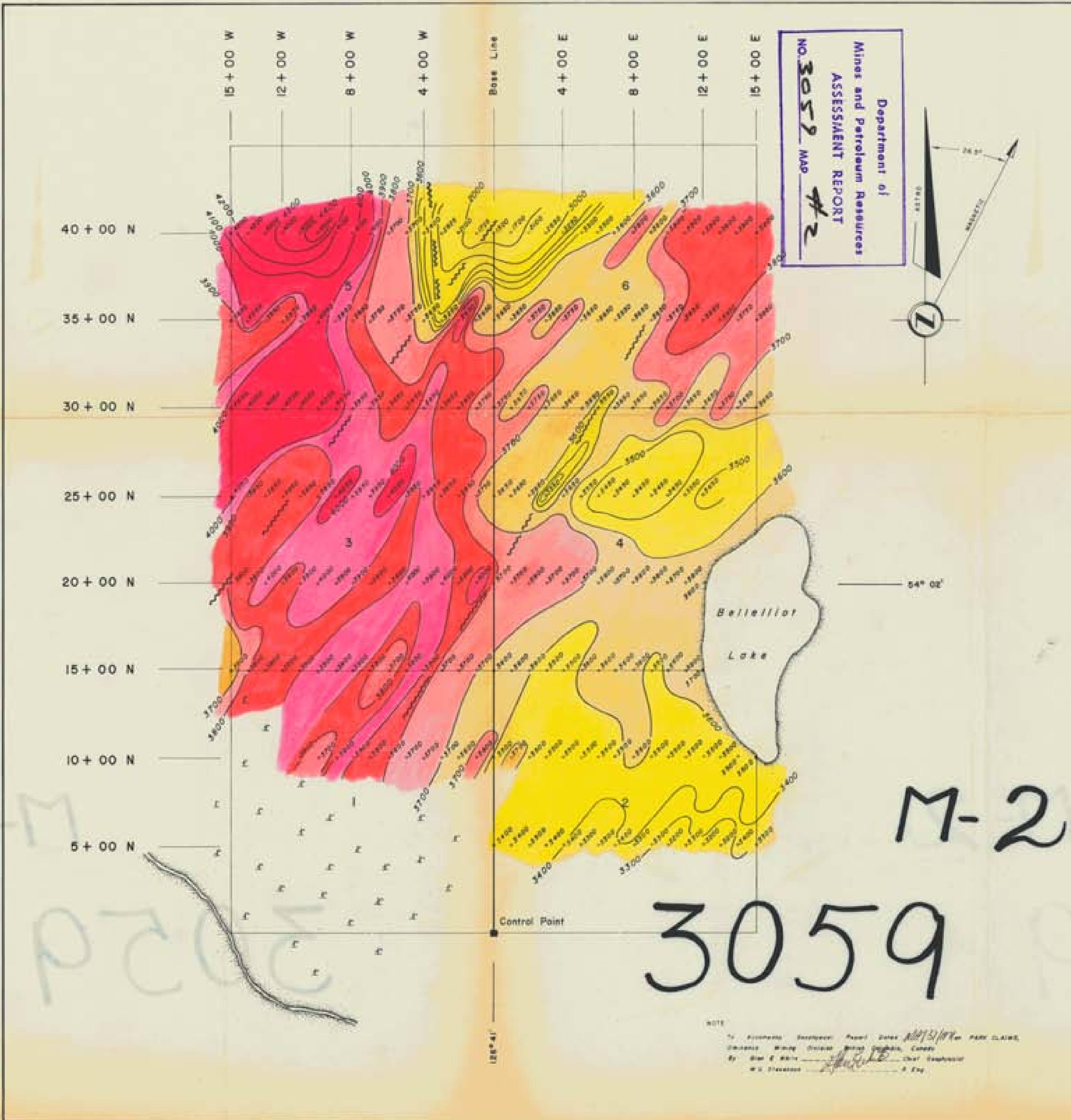
I, William G. Stevenson, DO HEREBY CERTIFY:

- That I am a Consulting Geological Engineer with offices at Suite 209 Stock Exchange Building, 475 Howe Street, Vancouver 1, B.C.
- That I am a graduate of the University of Utah, 1946, with a B.Sc. Degree.
- That I am a registered Professional Engineer in the Association in British Columbia.
- That I have practised my profession for 22 years.
- That I have no direct, indirect or contingent interest in the Park Mineral Claims or in the securities of Summit Oils Ltd. nor do I intend to receive any such interest.
- That I have reviewed a report dated May 31, 1971 based on work conducted by Tri-Con Exploration Surveys Ltd. under the supervision of Glen E. White, Chief Geophysicist.

DATED at Vancouver, British Columbia, this 2<sup>nd</sup> day of June, 1971.

W. G. STEVENSON & ASSOCIATES LIMITED  
Consulting Geologists

  
\_\_\_\_\_  
W. G. Stevenson, P. Eng.



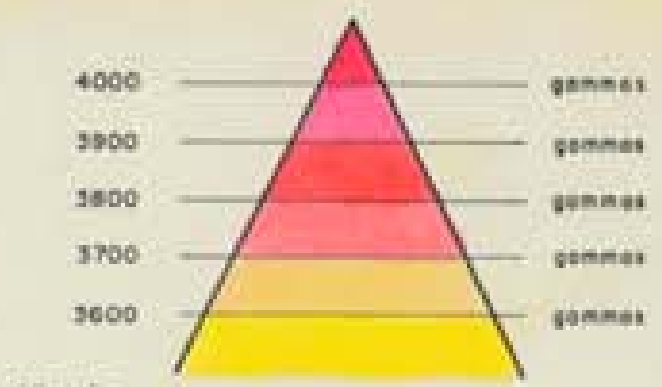
Department of  
 Mines and Petroleum Resources  
 ASSESSMENT REPORT  
 NO. 3059 MAP #2

**LEGEND**

- Outline of PARK CLAIMS
- Stations Surveyed E Reading
- Swamp
- Outline of Lake
- Contour Line, Contour Interval 100gam.
- Inferred Faults
- Creek

INSTRUMENT: SHARPE MF-1 (Flaggate)

**MAGNETIC INTENSITY KEY**



NTS. 93 L/2



<b>SUMMIT OILS LTD.</b>			
BELLELIOT LAKE PROPERTY			
PARK CLAIM GROUP			
<small>OWENCK MINE DIVISION - BRITISH COLUMBIA, CANADA</small>			
<b>GEOPHYSICAL MAP</b>			
<b>VERTICAL MAGNETIC INTENSITY (gammas)</b>			
		INTERPRETED BY: <i>Jim E. White</i>	
DRAFTED BY: <i>Jim E. White</i>		PROJECT: <i>3059</i>	
CHECKED BY: <i>AS</i>		FILE NO.:	
DATE: <i>Mar. 1971</i>	REVISED:	PROJECT NO. <i>3059</i>	FILE NO.:

NOTE:  
 1. All magnetic readings were taken on 10/15/68 on PARK CLAIMS.  
 2. Checked Mining Division, British Columbia, Canada.  
 By: *Jim E. White*, Chief Geophysicist  
 W.S. Davidson, P. Eng.

M-2

3059