

LINE CUTTING REPORT

CLAIMS: PINE

OWNER: KENNCO EXPLORATIONS (WESTERN) LIMITED

BY: R.W. STEVENSON, P. ENG.

DONE: JUNE 14-23, 1971

MINING DIVISION: OMINECA

Handwritten signature

3119



3119

Kennco Explorations, (Western) Limited

Department of
 Mines and Petroleum Resources
 ASSESSMENT REPORT

PINE CLAIMS

Situated 14 miles northeast of Thutade Lake

Omineca Mining Division,
 British Columbia

57° 127° SE

LOCATION MAP

3119 MAP #1

Scale:
 1 : 250,000

M-1



3119

Kaneco Explorations, (Western) Limited

Department of
Mines and Petroleum Resources
ASSESSMENT REPORT

IO. 3119 MAP #1

Scale:
1 : 250,000

PINE CLAIMS

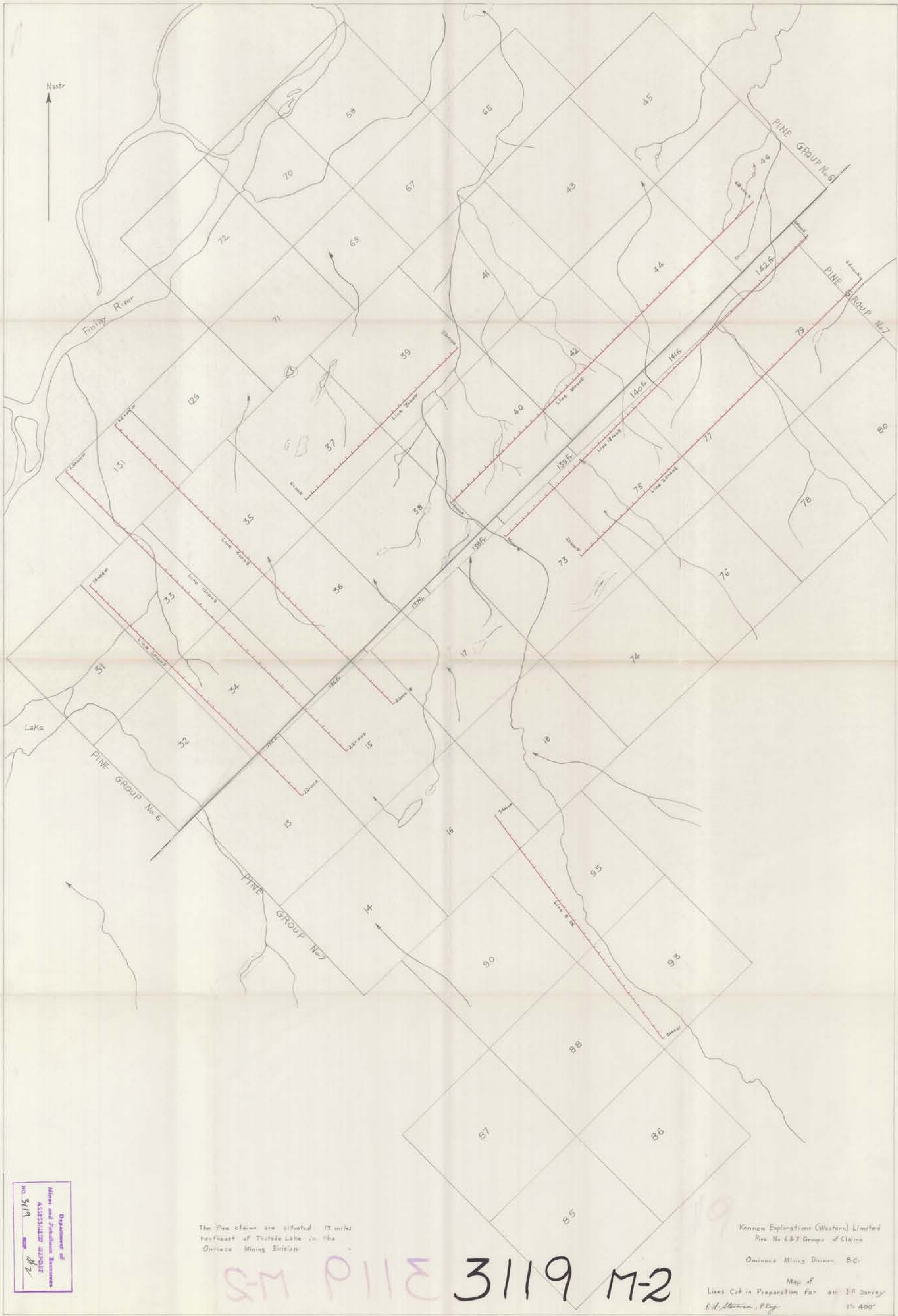
Situated 14 miles northeast of Thurade Lake

Omineca Mining Division,
British Columbia

57° 127' 58"

LOCATION MAP

M-1



North

Finlay River

Lake

PINE GROUP No. 6

PINE GROUP No. 7

PINE GROUP No. 6

PINE GROUP No. 7

The Pine claims are situated 15 miles
northwest of Thule Lake in the
Omineca Mining Division

3119 M-2

Kennecott Explorations (Western) Limited
Pine No. 6-7 Groups of Claims
Omineca Mining Division, B.C.

Map of
Lines Cut in Preparation for an IP Survey
R.A. [Signature], P. Eng. 1:400'

Department of
Mines and Technical Surveys
ASSISTANT REGISTRAR
No. 3119