

Report to
Adonis Mines Ltd.
on a
Geophysical Survey
of Axe Mineral Claims
by
Sherwin F. Kelly, P. Eng. 7/71

927/105

REPORT ON A
GEOPHYSICAL SURVEY
OF AXE MINERAL CLAIMS
NEAR
MERRITT, B. C.
49° 31', 120°, N. W.
by
SHERWIN F. KELLY, P. ENG.
GEOPHYSICIST AND GEOLOGIST
to
ADONIS MINES LTD.
VANCOUVER, B. C.
OWNER OF THE CLAIMS
ON WORK DONE
from APRIL 21, to JUNE 22, 1971

VOL. II of 2

3137

Department of
Mines and Petroleum Resources
ASSESSMENT REPORT
NO. 3137 MAP

Maps

- 2 Fig. 2-----Magnetic Profiles
- 3 Fig. 3-----Magnetic Contours and
Claim Map
- 4 Fig. 4-----VLF Profiles, Southern
Portion
- 5 Fig. 5-----VLF Profiles, Northern
Portion

Adonis Mines Ltd.
Axe Claim Group
Merritt, B.C.
Geophysical Surveys

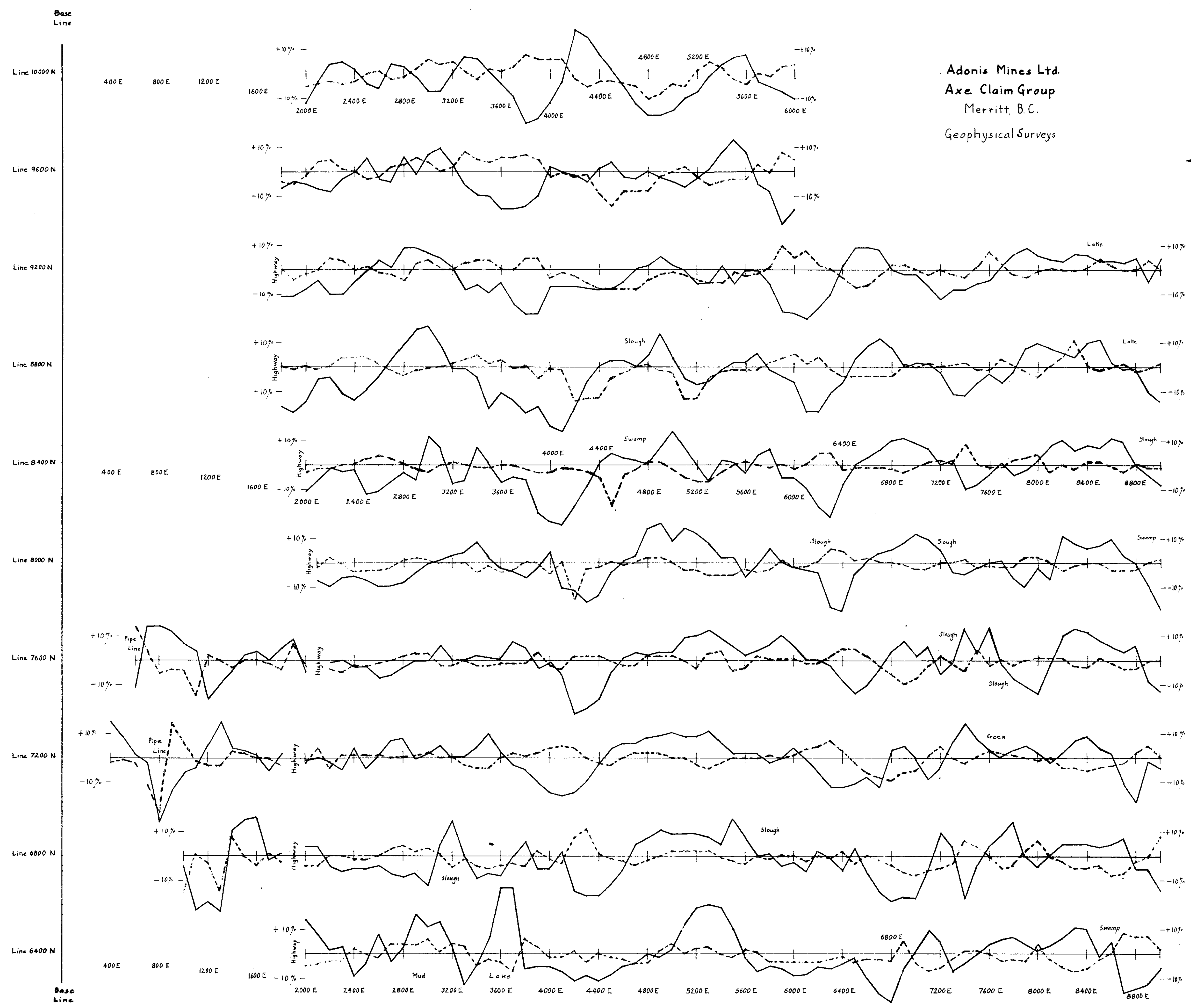
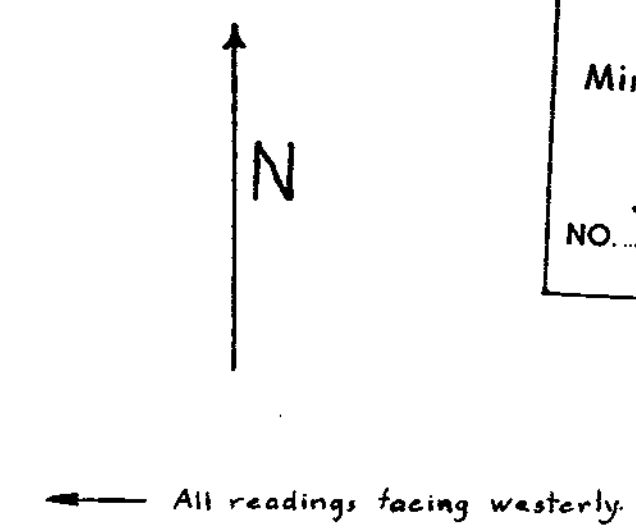
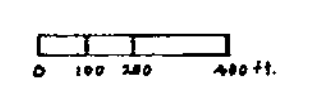
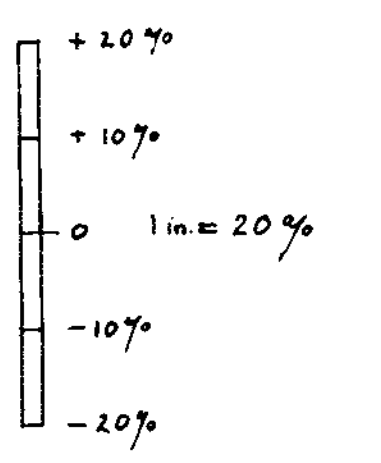


Fig. 5
VLF Profiles
North Portion

Scale



1 in = 400 ft.
Separation of profiles
is not to scale.



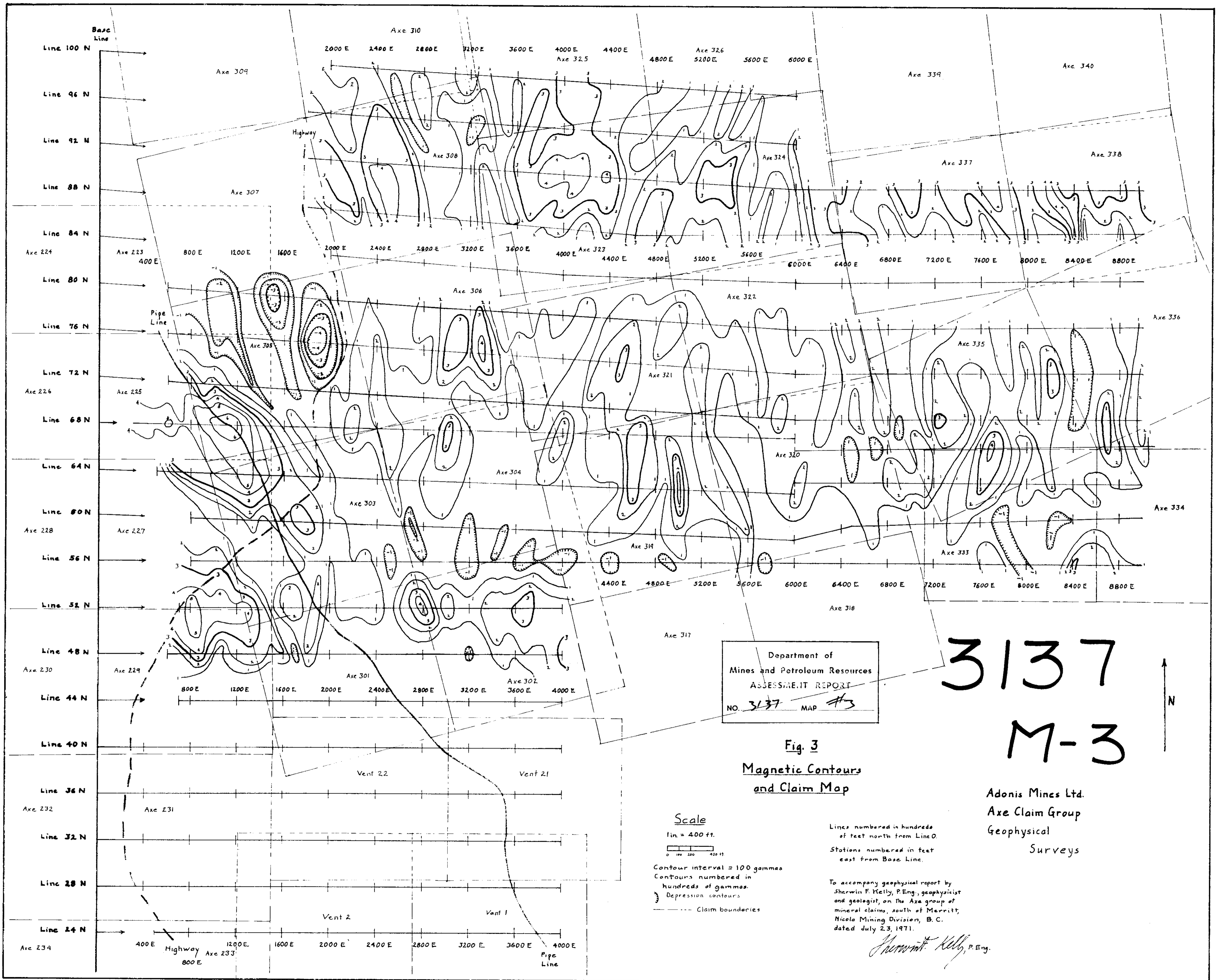
— In-phase component,
horizontal field.
- - - Out-of-phase (quadrature)
component, vertical field.

Grid lines numbered in feet
north from Line 0.
Stations numbered in feet
east from Base Line.

Observations made with VLF electromagnetic
receiver.

To accompany geophysical
report by Sherwin F. Kelly,
P. Eng., geophysicist and
geologist, on the Axe
group of mineral claims,
south of Merritt, Nicola
Mining Division, B.C.,
dated July 23, 1971.

Sherwin F. Kelly, P. Eng.



Department of
Mines and Petroleum Resources
ASSESSMENT REPORT
NO. 3137 MAP #13

3137
M-3

Fig. 3
Magnetic Contours
and Claim Map

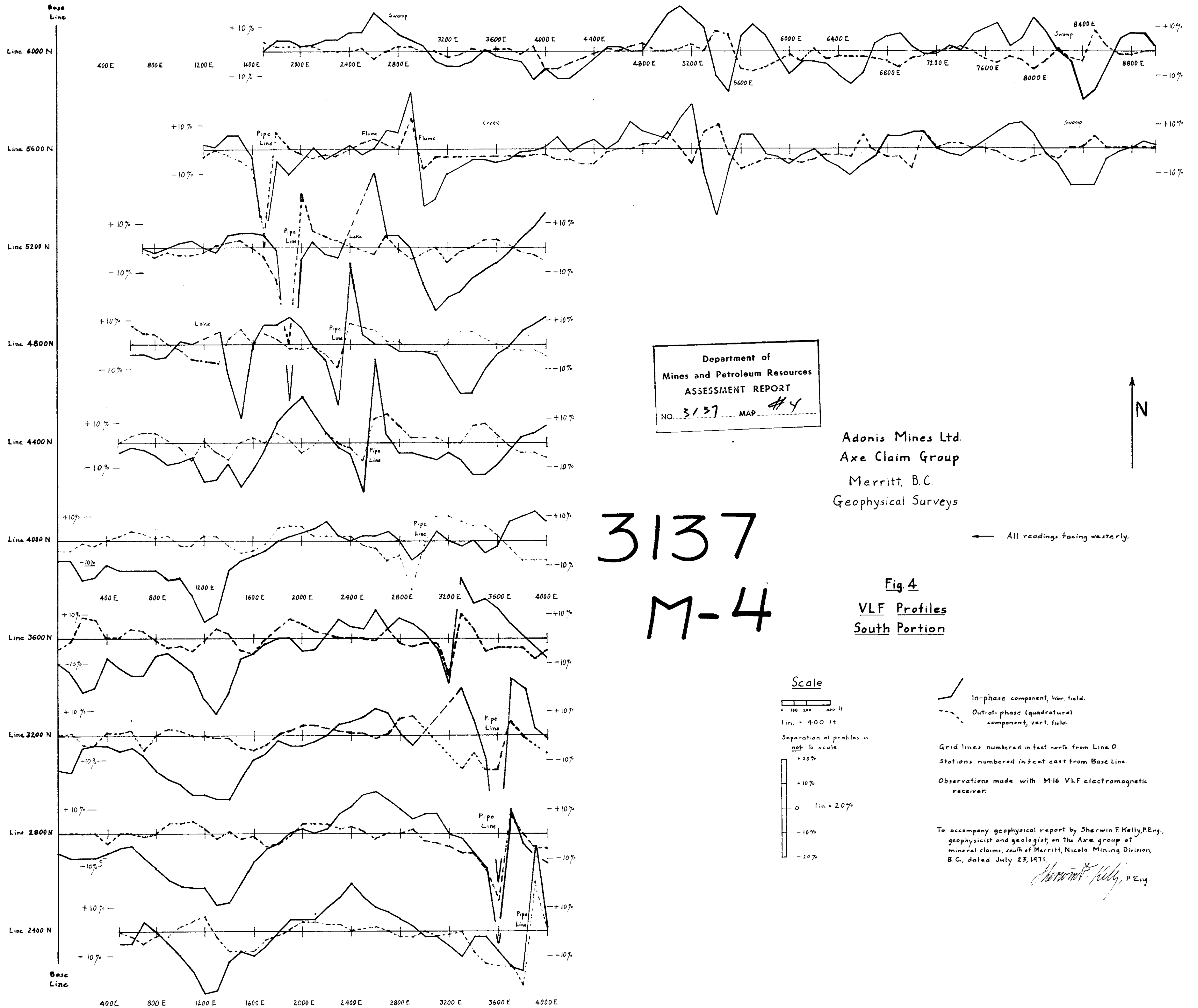
Scale
1 in = 400 ft.
0 100 200 400 ft.
Contour interval = 100 gammas
Contours numbered in
hundreds of gammas.
Depression contours
Claim boundaries

Lines numbered in hundreds
of feet north from Line 0.
Stations numbered in feet
east from Base Line.

To accompany geophysical report by
Sherwin F. Kelly, P. Eng., geophysicist
and geologist, on the Axe group of
mineral claims, south of Merritt,
Nicola Mining Division, B. C.
dated July 23, 1971.

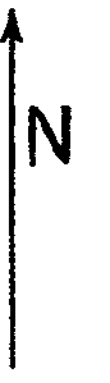
Sherwin F. Kelly, P. Eng.

Adonis Mines Ltd.
Axe Claim Group
Geophysical
Surveys



Department of
Mines and Petroleum Resources
ASSESSMENT REPORT
NO. 3137 MAP #4

Adonis Mines Ltd.
Axe Claim Group
Merritt, B.C.
Geophysical Surveys

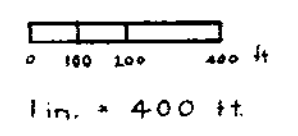


3137
M-4

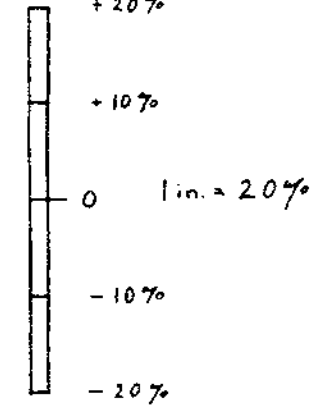
← All readings facing westerly.

Fig. 4
VLF Profiles
South Portion

Scale



Separation of profiles is
not to scale.



— In-phase component, hor. field.
- - - Out-of-phase (quadrature)
component, vert. field.

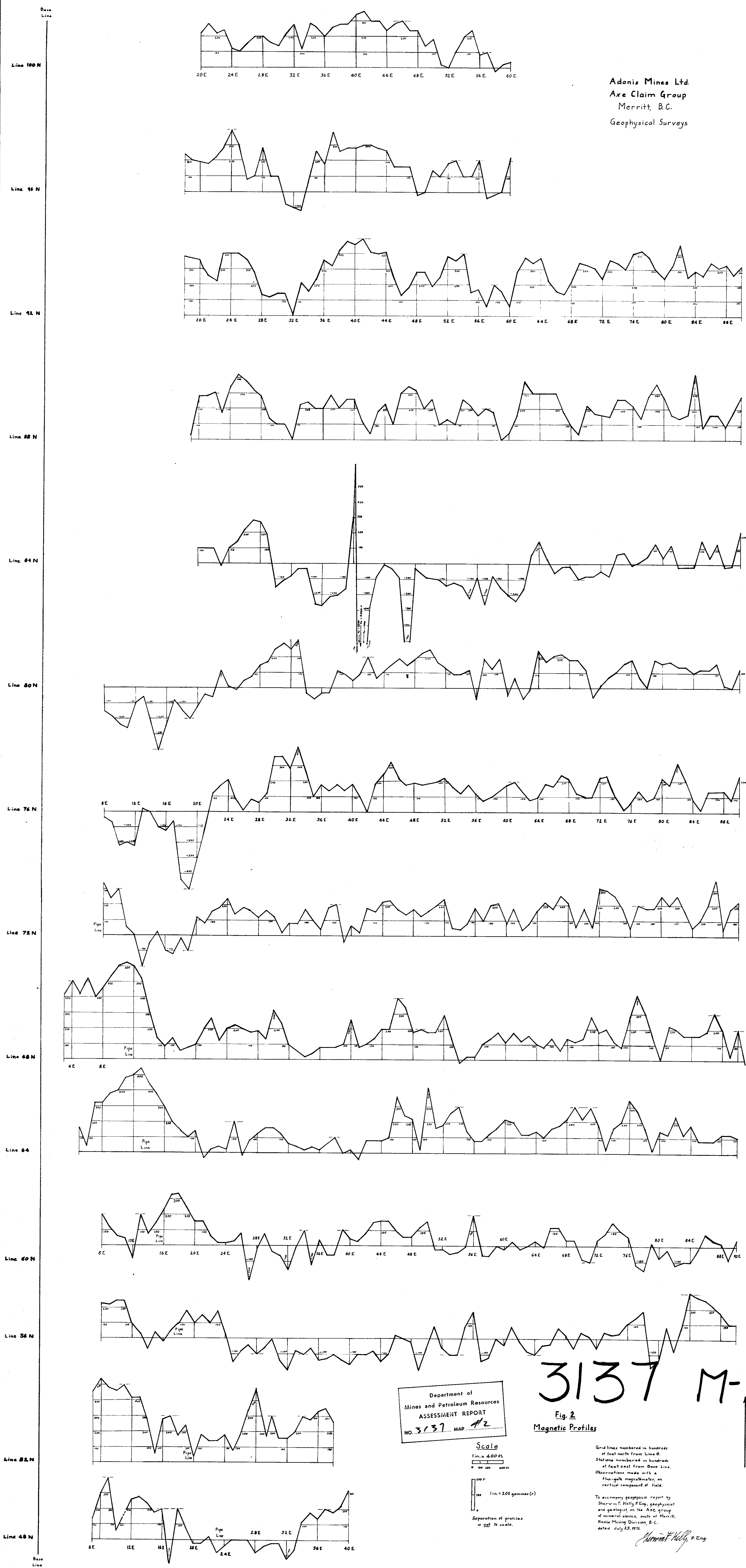
Grid lines numbered in feet north from Line 0.
Stations numbered in feet east from Base Line.

Observations made with M16 VLF electromagnetic
receiver.

To accompany geophysical report by Sherwin F. Kelly, P.Eng.,
geophysicist and geologist, on the Axe group of
mineral claims, south of Merritt, Nicola Mining Division,
B.C., dated July 23, 1971.

Sherwin F. Kelly, P.Eng.

Adonis Mines Ltd.
Axe Claim Group
Merritt, B.C.
Geophysical Surveys



Department of
Mines and Petroleum Resources
ASSESSMENT REPORT
NO. 3137 MAP #2

3137 M-2

Fig. 2
Magnetic Profiles

Scale
1 in. = 400 ft.
1 in. = 200 gammaes (γ)
Separation of profiles
is 100 ft. scale.

Grid lines numbered in hundreds
of feet north from Line 0.
Stations numbered in hundreds
of feet east from Base Line.
Observations made with a
flux-gate magnetometer on
vertical component of field.

To accompany geophysical report by
Sherwin F. Kelly, P. Eng., geophysicist
and geologist, on the AXE group
of mineral claims, south of Merritt,
Nicola Mining Division, B.C.,
dated July 23, 1971.
Sherwin F. Kelly, P. Eng.

N