

3244

Report On A

Geochemical and Geophysical Survey
Carried Out Between Aug. 16 and Aug. 31, 1971
On The Florence Group:

Will 3-6, Molly, Molly 1-7, Kelly Jo Fr.,
Joe, Will 2 Fr., Willy I, Willy II Mineral Claims

In The
Nanaimo Mining Division
Situate At
Raven Bay, Texada Island
(49° 124° SE)

for

TEXADA LIME LTD.

by

MACDONALD CONSULTANTS LTD.

H. Wober, P. Eng.

Sept. 7, 1971

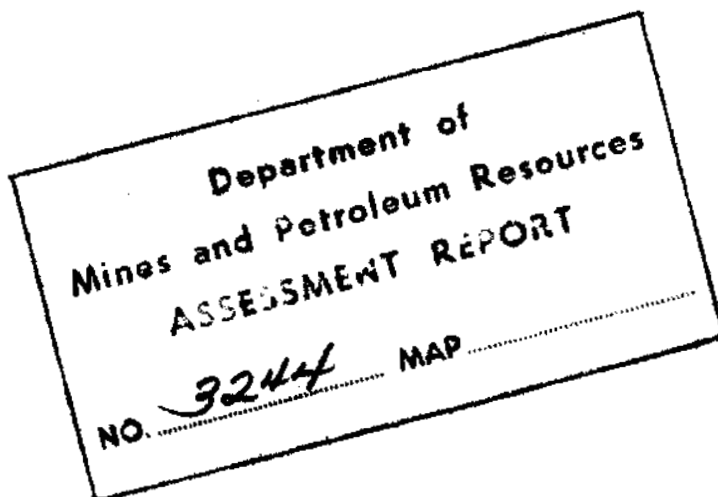


TABLE OF CONTENTS

Introduction	1
Property	1
Location and Access	2
Linecutting	2
Geochemical Survey	2
Geophysical Survey: Ground Magnetometer	3
Interpretation	4

Maps

<i>H</i> Location Map	
<i>2</i> Geochemical Map	
<i>3</i> Geophysical Map	

Appendix

Schedule of Personnel and Qualifications
Schedule of Time and Wages
Statement of Costs

INTRODUCTION

Personnel of MacDonald Consultants Ltd, carried out a programme of linecutting, soil sampling, and a ground magnetometer survey on the property of Texada Lime Ltd, on Texada Island. The purpose of the survey was to determine if the granite-limestone contact crossing the property warrants further exploration work for iron-copper mineralization, which is typical for the island.

The survey was carried out from August 16 to August 31, 1971. The writer visited the property from August 25 to August 27 to inspect the work in progress and to check on the quality of the work.

The field crew worked under the supervision of Mr. Evan Burnett of MacDonald Consultants, who is also a trained magnetometer operator.

PROPERTY

The entire property of Texada Lime Ltd, consists of twenty-eight full-size and four fractional mineral claims. The claims are recorded at the office of the Mining Recorder at Nanaimo as follows:

<u>Name</u>	<u>Record No.</u>	<u>Expiry Date</u>
Will #3-6	19450-19453	June 6, 1972
Molly	17981	June 7, 1973
Molly #1-3	18073-18075	June 28, 1972
Molly #4-7	18139-18142	Sept. 10, 1971
Kelly Jo Fr.	19674	July 21, 1972
Will #2 Fr.	21086	Nov. 8, 1971
Willy # I	27287	Nov. 14, 1971
Willy # II	27288	Nov. 14, 1971
Willy #3, 4	30587, 30588	July 16, 1973
Willy #5, 6, Fr.	30589, 30590	July 16, 1973
Willy #7-17	30591-30601	July 16, 1973

LOCATION AND ACCESS

The property is located at Raven Bay on the north shore of Texada Island. Access is by dirt road from Vananda. Several old logging roads crossing the property are still passable for trucks and/or four-wheel drive vehicles and provide excellent access to all parts of the property. The distance by road from Vananda to Raven Bay, where camp was established during the work program, is 3.25 miles.

LINECUTTING

Two baselines were cut on the property as shown on attached geochemical and geophysical maps. The baselines were cut four feet wide to the ground with chained-in picket stations every 100 feet.

Total baselines: 1.74 miles.

Cross lines were cut at 200 foot and 400 foot line separation by blazing and flagging with chained-in picket stations every 100 feet on lines 200 feet apart, and every 200 feet on lines 400 feet apart. All lines are shown on attached geochemical and geophysical maps.

A total of sixteen miles of cross lines were cut.

GEOCHEMICAL SURVEY

Six hundred ninety-four soil samples were taken from all station locations along the baselines and cross lines. The samples were taken from the "C"-horizon with a mattock. The personnel carrying out this work have been trained by MacDonald Consultants during the course of several exploration seasons and are well experienced. The samples were packed in water-resistant paper bags supplied by the assay laboratory and pre-dried in the field to prevent damage in transport.

The samples were shipped to Bondar-Clegg and Co., 1500 Pemberton Ave., North Vancouver, B. C., for assaying. In preparation for assaying, the samples were dried and screened in the lab. The -80 mesh fraction was used for assaying. Hot aqua regia was used for digestion, and the copper values in parts per million were determined by the atomic absorption method. Background values, determined by statistical method, average 35 ppm; threshold values start at 70 ppm, and anomalous values range from 90 ppm to over 300 ppm copper.

GEOPHYSICAL SURVEY: GROUND MAGNETOMETER

A ground magnetometer survey, using a Scintrex MF-1 Fluxgate Magnetometer (Serial No. 809375), was carried out on Will #3 and #5 claims. The readings were taken on lines 200 feet apart at 100 foot station intervals. Where significant changes occurred along the limestone-intrusive contact, the interval was reduced to fifty feet and in places to twenty-five feet in order to pinpoint the contact.

Base stations were established along the baseline and on lines 4+00S, 6+00S, and 8+00S where they cross the road along the edge of a stripped area on Will #3 claim. Check readings for diurnal drift were taken every hour during the survey. A total of 353 station readings were taken.

Trending at station 13+00E on line 10+00S uncovered magnetite-carrying skarn east of the contact. The magnetometer survey was therefore successful in pinpointing the contact zone on all lines east of the baseline. A sharp gradient of from 400 gammas to 2900 gammas rise over a 50 foot line interval made it possible to locate the contact between limestone and the mineralized skarn zone within 20 feet along the cross lines.

To the east, the skarn zone dissolves into several bands 50 to 200 feet wide before grading into porphyrites of the Texada formation. Negative polarity, probably due to topographic and mass effects of the magnetite skarn, occurs on several lines immediately east and in most cases downhill from the highly magnetic zone. The contact appears to be offset between lines 2+00S and 4+00S and between 12+00S and 14+00S, probably due to east-west cross faulting.

INTERPRETATION

The magnetometer survey successfully outlined the eastern contact of the Marble Bay limestone belt with the porphyrites of the Texada formation. East-west striking crossfaults were interpreted from offsets of the magnetic gradients as mentioned above. The magnetite content of the skarn zone exposed in a trench on line 10+00S amounts to about 20% (visual estimate) and corresponds with magnetometer readings of about 2500 gammas. Since the overburden is only moderate to shallow and fairly uniform over the entire property, it is reasonable to assume that similar gamma readings correspond with magnetite contents of the same order.

The geochemical response over the area covered by the ground magnetometer survey is rather erratic, with high values over the contact zone but showing little continuity from line to line.

A north-south trending geochemical anomaly covers Willy #5 Fr. and Willy #7. Its strike extension is about 2600 feet, being open at the north end. Its width is approximately 400 feet. Anomalous values range from 117 ppm to a high of 1250 ppm copper, with most values in the 200-400 ppm range.

This anomaly should be investigated further by ground magnetometer work and possibly trenching and/or drilling. Detailed prospecting and mapping of the anomalous area is recommended as well. The soil grid should be extended to the north onto the Molly claims.

Respectfully submitted,
MACDONALD CONSULTANTS LTD.



H. Wober, P. Eng.

HHW/mb



PROPERTY LOCATION MAP OF TEXADA LIME LTD.

To accompany assessment work report by MacDonald Consultants Ltd.,
 H. Wober, P. Eng. on the Texada Lime Property on Texada Island,
 Nanaimo Mining Division, dated September 5, 1971

H. Wober

SCHEDULE OF PERSONNEL AND QUALIFICATIONS

All of MacDonald Consultants Ltd., 12 - 425 Howe Street,
Vancouver, B. C.:

H. Wober, P. Eng., B. C. and Yukon

Graduated 1963, Montanistische Hochschule, Leoben, Austria

1958-1962: Seasonal employment, geologist and surveyor
in East Greenland

1964-1966: United Keno Hill Mines, Beat Geologist to
Chief Mine Geologist

1966- : MacDonald Consultants Ltd., Consulting Engineer
Mining and Exploration

Member of the Association of Professional Engineers of
British Columbia and Yukon since 1966.

M.CIMM

Evan Burnett: Field Supervisor and Magnetometer Operator.
Trained by MacDonald Consultants.

Bruce MacDonald)	
Don Knudsen)	
Gary Baker)	Linecutters, soil samplers,
Larry Mamoser)	trained by MacDonald Consultants.
Gerry Diakow)	

DOMINION OF CANADA:
PROVINCE OF BRITISH COLUMBIA.

In the Matter of

To Wit:

Texada Lime Ltd.
801 - 900 West Hastings
Street
Vancouver 1, B. C.
F.M.C. No. 102731
May 25, 1971

SUB-MINING RECORDER
RECEIVED
SEP 8 1971
M.R.#.....5.....
VANCOUVER, B.C.

I, H. H. Wober

of 12 - 425 Howe Street, Vancouver 1, B. C.
F.M.C. No. 102725 - May 25, 1971

in the Province of British Columbia, do solemnly declare that the following costs were incurred by a geochemical and geophysical survey on the Florence Group of Mineral Claims, situate on Texada Island, Nanaimo Mining Division:

Wages:

E. Burnett, field supervisor and mag operator	14½ days	\$ 471.48
B. MacDonald, line cutter and soil sampler	14 days	276.39
D. Knudson, " "	14 days	276.39
G. Baker, " "	12 days	236.90
L. Mamoser, " "	12½ days	261.28
G. Diakow, " "	7½ days	182.90
		<hr/>
		\$1,705.34

Fees:

H. Wober, P. Eng., Consulting & Supervision 3 days 450.00

Truck Rental and Operating Costs:

2 Vehicles, two weeks 300.00
Mileage 98.40
Gas and Oil 67.28

Food and Meals:

630.26

Camp Equipment Rental:

60.61

Flagging, Naphta, Engineering Supplies:

107.77

Magnetometer Rental, 4 days:

40.00

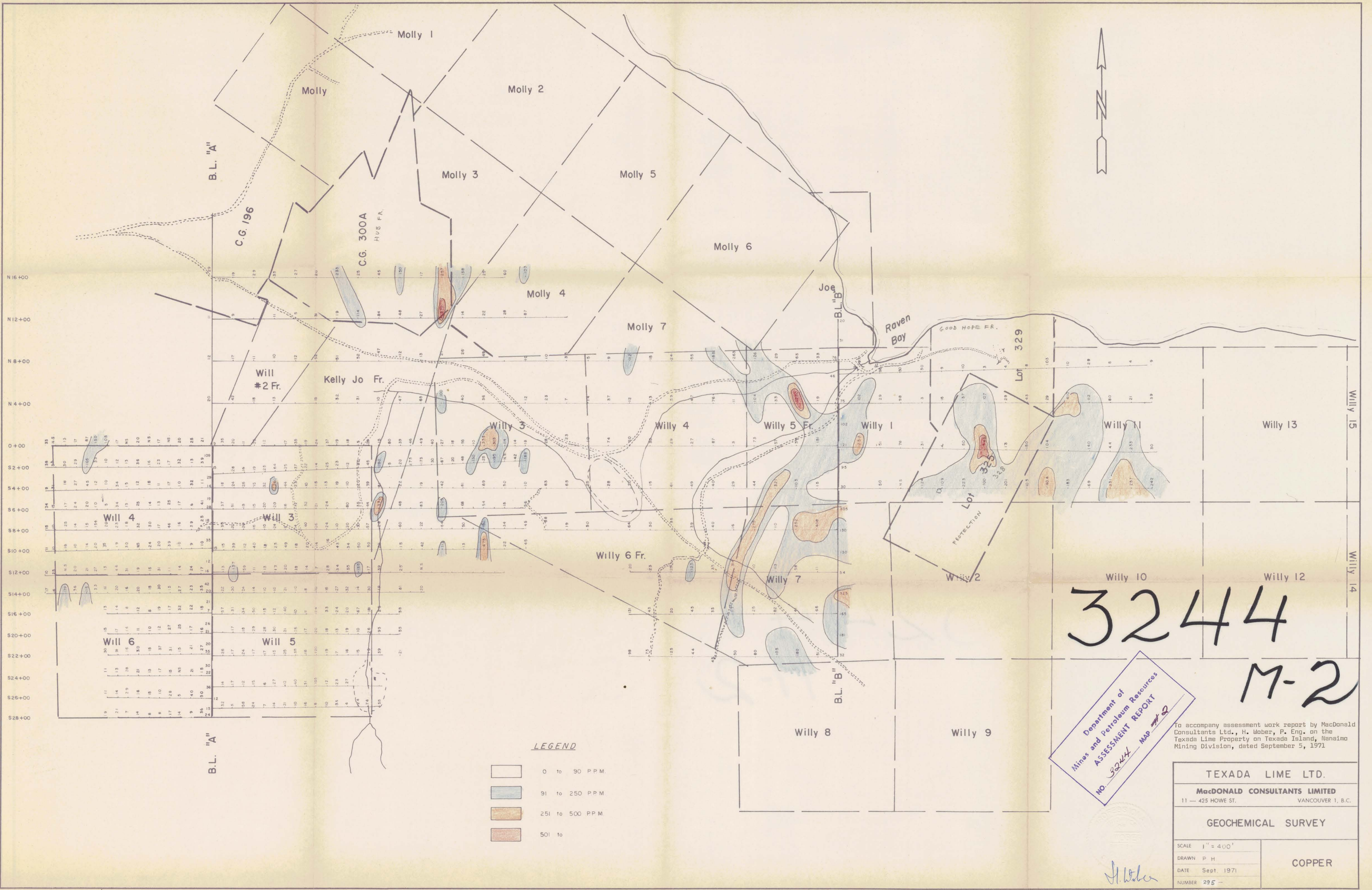
Assaying, 677 samples for Cu, \$1.20 per sample:

812.40 TOTAL

\$4,272.00

And I make this solemn declaration conscientiously believing it to be true, and knowing that it is of the same force and effect as if made under oath and by virtue of the "Canada Evidence Act."

Declared before me at the *City*
of *Vancouver*, in the
Province of British Columbia, this *5*
day of *Sept.* 1971, A.D.



LEGEND

White box	0 to 90 PPM
Light blue box	91 to 250 PPM
Orange box	251 to 500 PPM
Dark orange box	501 to

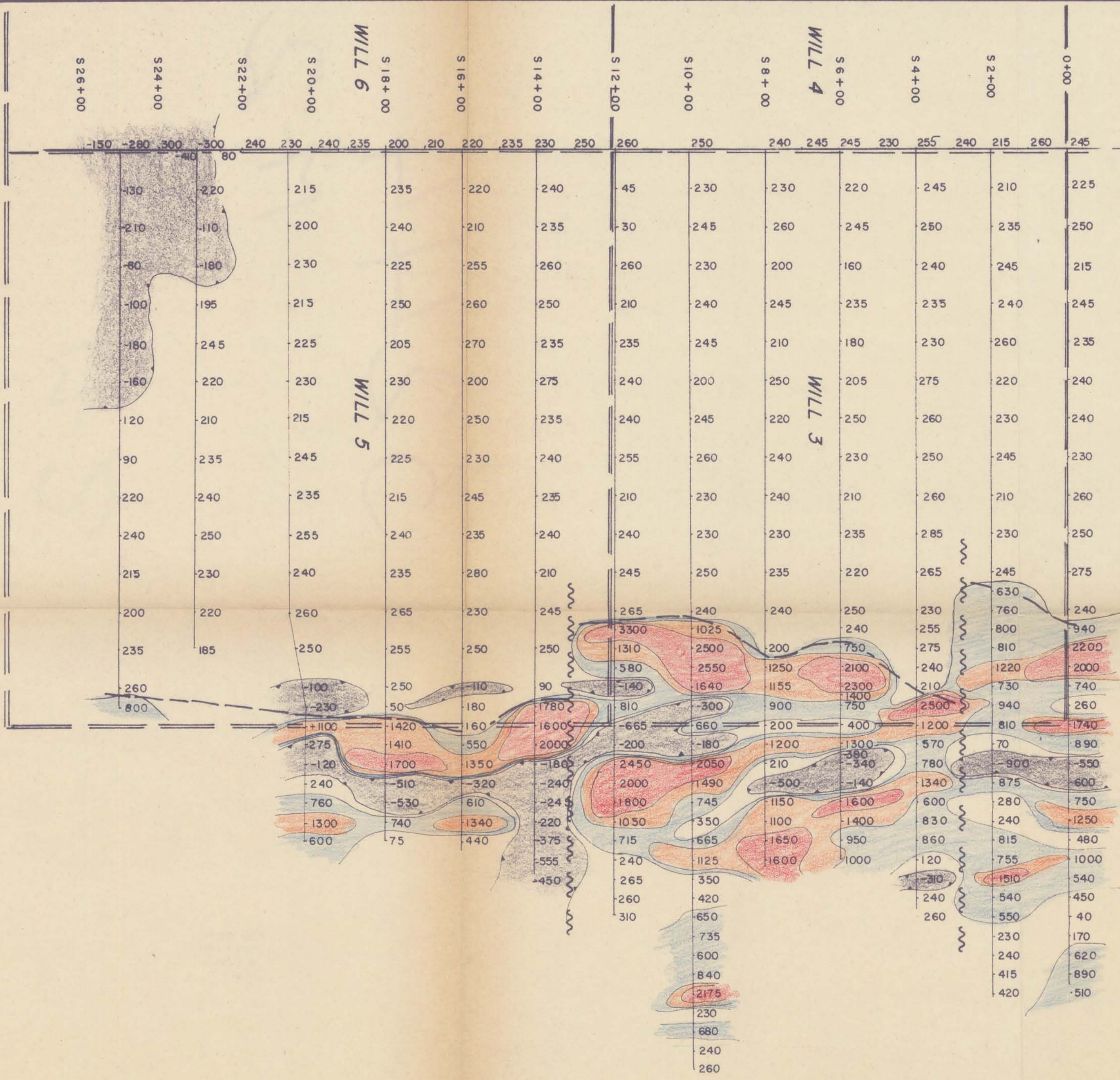
Department of
Mines and Petroleum Resources
ASSESSMENT REPORT
NO. 3244 MAP #2

3244
M-2

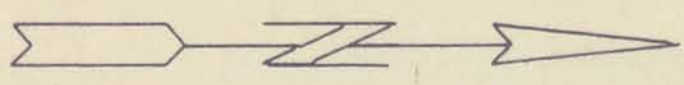
TEXADA LIME LTD. MACDONALD CONSULTANTS LIMITED 11 - 425 HOWE ST. VANCOUVER 1, B.C.	
GEOCHEMICAL SURVEY	
SCALE 1" = 400' DRAWN P.H. DATE Sept. 1971 NUMBER 295-	COPPER

H. Weber

To accompany assessment work report by MacDonald Consultants Ltd., H. Weber, P. Eng., on the Texada Lime Property on Texada Island, Nanaimo Mining Division, dated September 5, 1971



Baseline "A"



LEGEND

- to 0 gammas
- 1 to 500 gammas
- 501 to 1000 gammas
- 1001 to 1500 gammas
- 1501 to >
- Interpreted Contact
- Interpreted Fault

Department of
 Mines and Petroleum Resources
ASSESSMENT REPORT
 NO. 3244 MAP #3

To accompany assessment work report by MacDONALD Consultants Ltd., H. Wober, P. Eng. on the Texada Lime Property on Texada Island, Nanaimo Mining Division, dated September 5, 1971

TEXADA LIME LTD.	
MacDONALD CONSULTANTS LIMITED	
11 - 425 HOWE ST.	VANCOUVER 1, B.C.
MAGNETOMETER SURVEY	
SCALE 1" = 200'	
DRAWN J. P. H.	
DATE SEPT. 1971	
NUMBER 295-	

H. Wober