

# 3281

GEOPHYSICAL REPORT ON EVE 5 & 6 CLAIMS

by J. M. Black, P.Eng.

*Heffley Lake,*

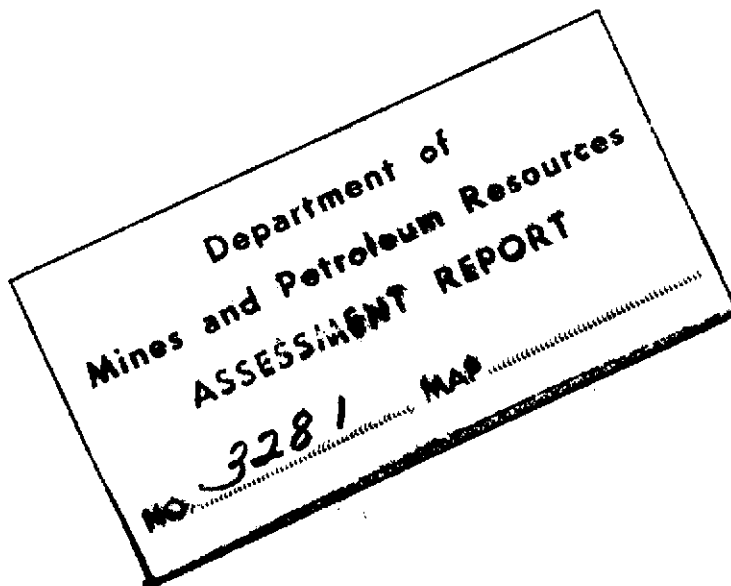
*50° , 120° NE*

*92 E / 16 E*

TABLE OF CONTENTS

Introduction	Page 1
Method	" 1
Magnetics and interpretation	" 1
Employment	" 2
#1 Figure (bound in back), Plan	

*Western Canada Steel Ltd*  
*Sept. /70 - 71*



## INTRODUCTION

Most of Eve 6 is gently rolling, dropping gradually down to the south. Most of Eve 5 is a moderate slope up to the north. The surface is covered with mostly unsorted glacial material. No outcrops were seen.

## METHOD

A Sharpe magnetometer P.M.F.-3 No. 40512<sup>was used</sup> This reads directly in gammas. Readings were taken at all points shown just below chest level. At some of the points readings were also taken at ground level.

A traverse was run along the location line and, also, traverses by pace and compass were run from the location line. The results are shown on the accompanying figure and in the next section of this report.

## MAGNETICS AND INTERPRETATION

The readings generally decrease westwards. Two anomalies were found as shown on the figure. They are as much as 4,400 gammas above background, which is 4,100 gammas. The anomalies appear to be the ends of a crescent-shaped anomaly which is centred east of these claims.

The relatively wide spacing of the isomagnetic lines suggests that the causative body is at considerable depth, possibly of the order of 200' to 300'.

Ground level readings were taken on the traverses from the location line at the east end of the claims. On the southern traverse, on the east leg, proceeding south, the readings were 58, 64, 70, 76, 84, 76, 75, 73.5, 73, 71, 70, 68 and going west, 67, 68 and 70. Then, proceeding northwards, they were 74, 74.5, 73, 72, 71.5, 73, 69, 67, 62, 56, 53. On the northern traverse, on the west leg, proceeding northwards from the location line, the readings were 53, 57, 64, 73, 71, 65, 65 and 64.5, and on the southward leg, 67, 75, 82, 86, 80, 79, 77, 77 and 75.

Assuming that points where the chest level and ground level readings are the same (where the vertical gradient is nil) may mark the approximate edge of the causative body or bodies, they have an outline as shown on the accompanying sketch.

EMPLOYMENT

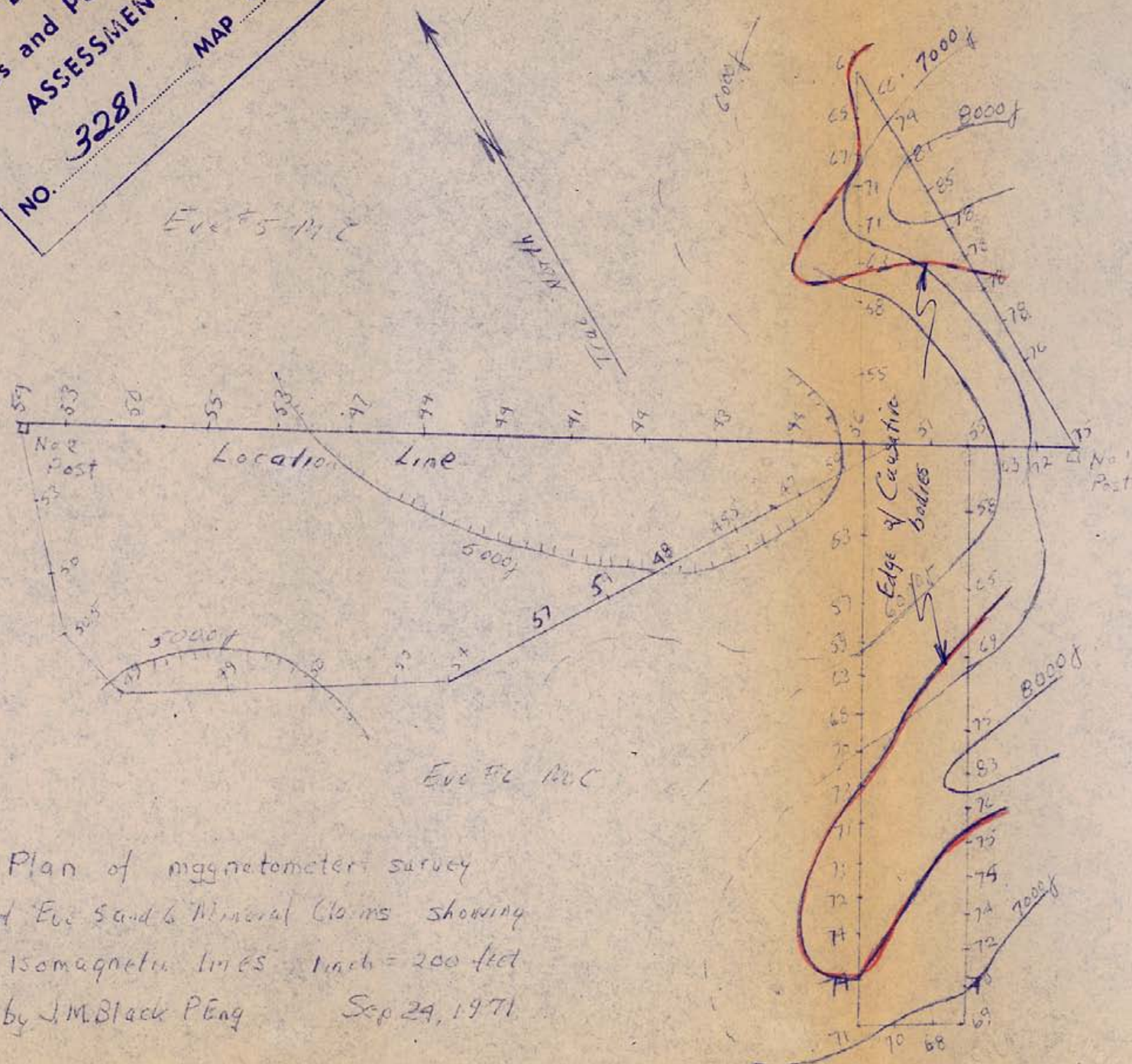
The work was done by J. M. Black, P.Eng. on September 12th, 1970 and one half day each on September 21 and 22, 1971



J. M. Black, P.Eng.  
September 23, 1971

Department of  
Mines and Petroleum Resources  
ASSESSMENT REPORT

NO. 3281 MAP # 1



Plan of magnetometer survey  
of Eve Sand & Mineral Claims showing  
isomagnetic lines 1 inch = 200 feet  
by J.M. Black P. Eng. Sep 24, 1971

Readings are in hundreds of gammas  
All readings are positive

Sep 24/71 J.M. Black