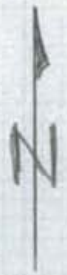
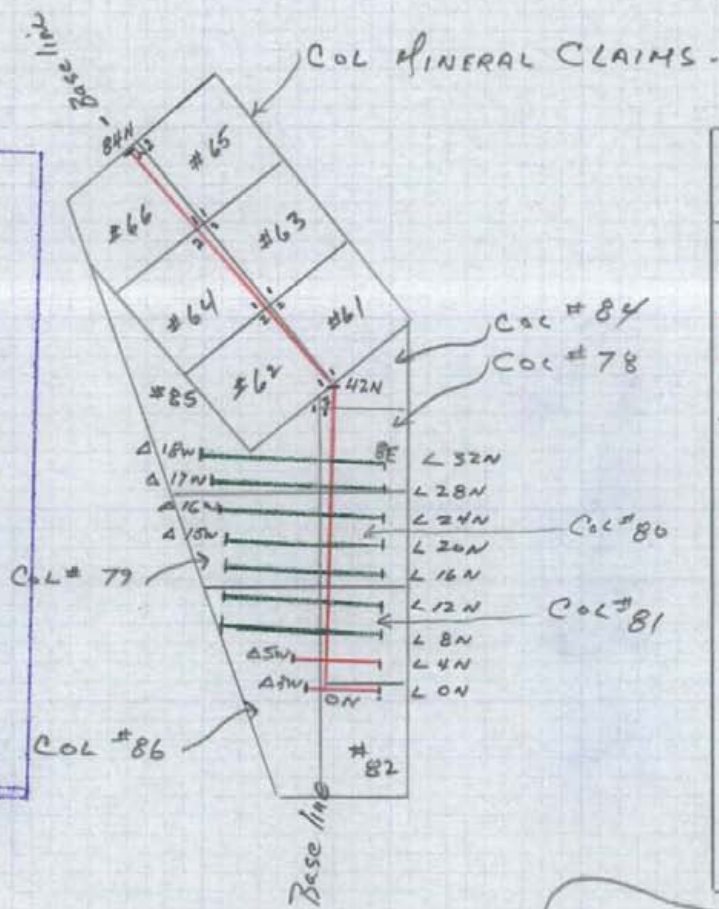


INDEX MAP TO COL Mc's GRID



Scale: 1" = 1/2 MILE

Department of
 Mines and Petroleum Resources
 ASSESSMENT REPORT
 NO. 3286 MAP #1



LEGEND

- Picket line
- Blazed & chained line
- CLAIM boundary
- 2/2 Final claim post
- 1/1 Initial claim post

TCHENTLO LAKE

CHUCHI LAKE M-1

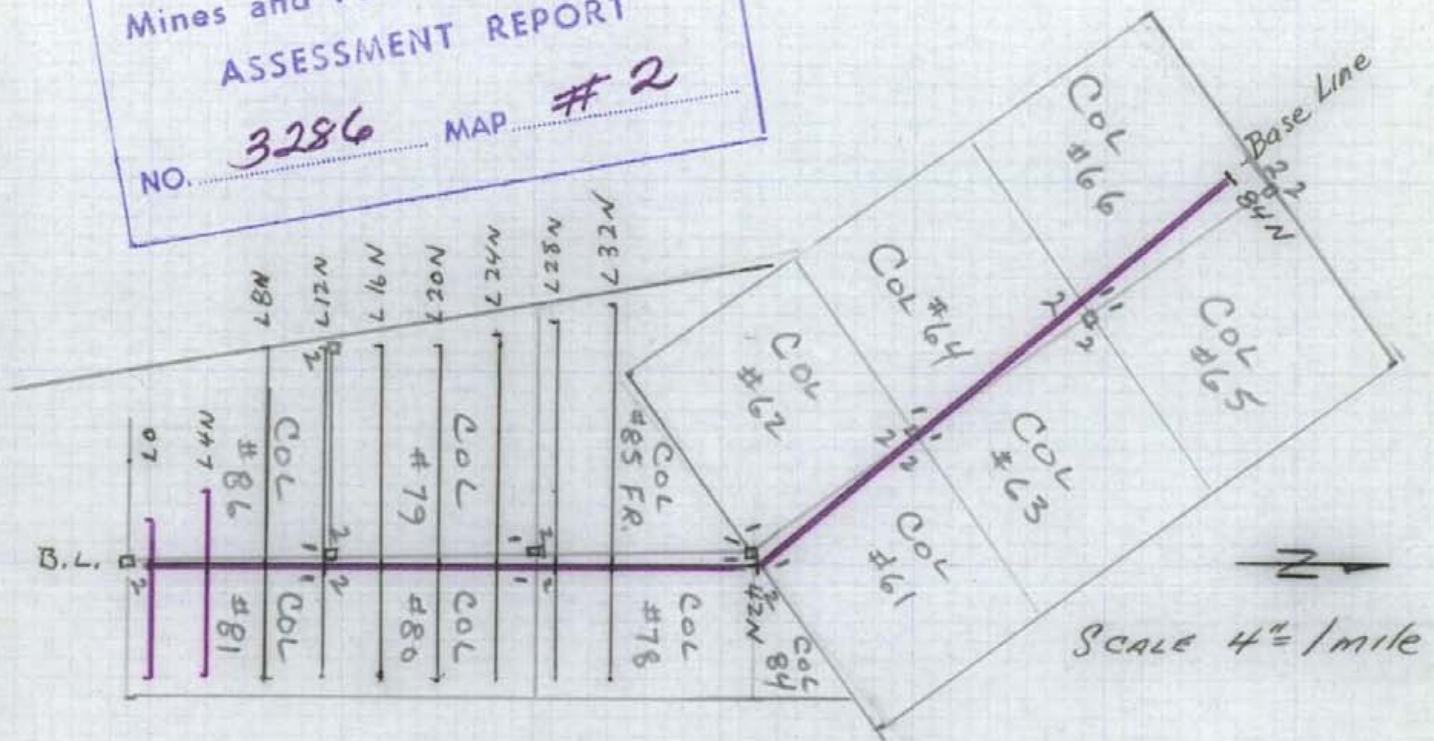
Date: - Oct. 26, 1971

Colo J. Campbell

3286

LINE CUTTING - COL FRACTION GROUP

Department of
Mines and Petroleum Resources
ASSESSMENT REPORT
NO. 3286 MAP # 2



— PICKET LINE — 2 miles
— BLAZED, FLAGGED, CHAIN & COMPASS LINE — 3.2 miles

COSTS

C. J. CAMPBELL	July 18-21, 23, 25-27	8 days @ \$40.	320.00
H. L. CAMPBELL	July 18-21, 23, 25-27	8 days @ \$30.	240.00
W. RIGLER	JULY 27	1 day @ \$40	40.00
FOOD	17 days @ 6 ⁰⁰ /day		102.00
POWER SAW	8 day @ 8 ⁰⁰ /day		64.00
TRANSPORTATION (Boat & Motor)	8 day @ 20 ⁰⁰ /day		160.00
			<hr/>
			926.00
			<hr/>

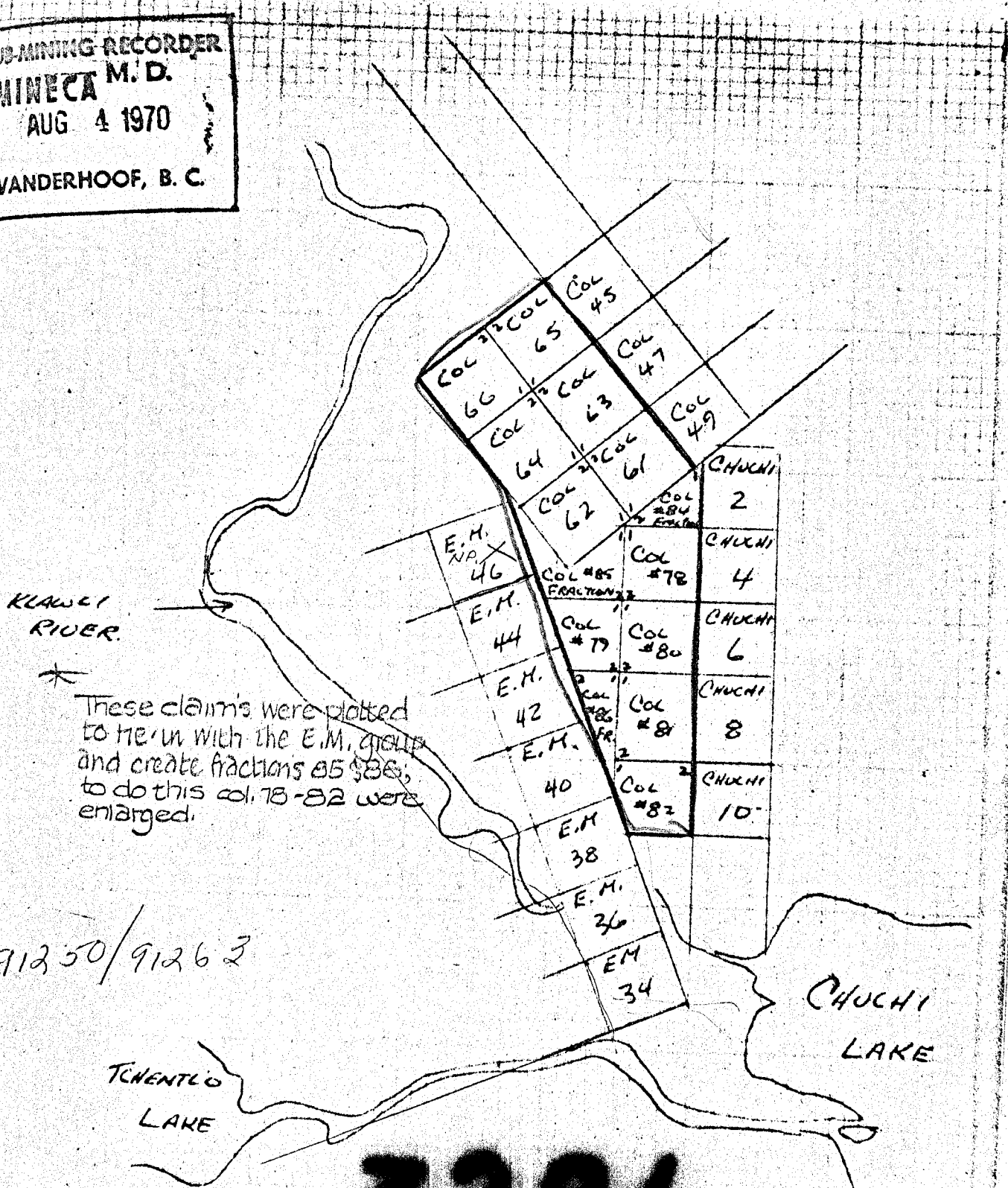
Colin J. Campbell August 4, 1971

SUB-MINING RECORDER
 OMINECA M. D.
 AUG 4 1970
 VANDERHOOF, B. C.

KLAWAT
 RIVER.

These claims were plotted
 to tie in with the E.M. group
 and create fractions 85-88;
 to do this col. 78-82 were
 enlarged.

91250/91263



3206

91250-63K
 Omineca
 288
 December 31 70
 March 5 1971
 Oap.

SCALE 2" = 1 mile

LOCATION SRETCIA - COL #61 → #66,
 COL #78 → 82
 COL #84 FRACTION