

3324

COMINCO LTD.

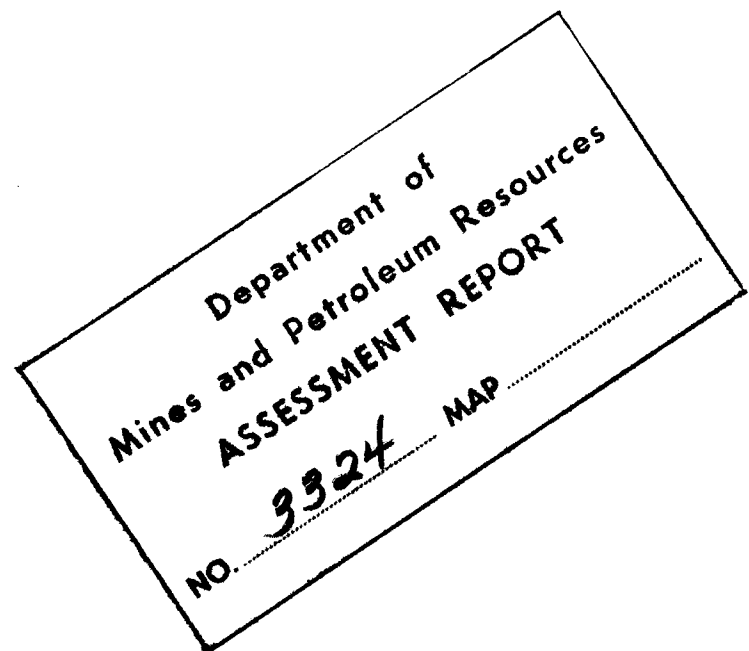
KIMBERLEY EXPLORATION

REPORT OF

A GEOCHEMICAL SURVEY ON THE KK GROUP

by L.M. Rogers, B.Sc. (Geol)
Under the supervision of
W.P. Armstrong, P. Eng.

October 12, 1971



Report of a Geochemical
Survey on the
KK Group of 30 claims and
M-52 mineral lease situated
16 miles N.E. of Cranbrook,
B.C. NTS 82-G-12, Fort Steele
Mining District

GEOCHEMICAL SURVEY

TABLE OF CONTENTS

Geochemical Survey Page 1

Attachments Page 1

1. Statement of Expenditures

2. Statutory declaration of Expenditures

3. Statement of Qualifications

#1 4. Map KK I; Plan of Kootenay King Claims
Scale $1\frac{1}{4}" = 1$ mile

#2,3,4 5. Map - KK II; Geochemical lines and data
1" - 1000 ft.

GEOCHEMICAL SURVEY

The area on which the Geochemical Survey was performed is on the east slope of Lakit Mountain, to the South of the Kootenay King Mine.

A total of eighty-eight (88) samples were taken on seven lines. The lines are irregularly spaced and in most cases subparallel since they were run along the crests of small ridges on the mountain flank. Sparse trees and brush cover the mountain above 7000' and the soil is thin and rocky averaging about 3". Below this, the cover of vegetation is thicker and the thickness of the soil average about one foot.

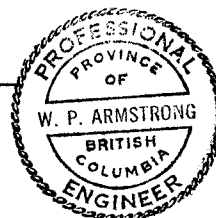
Development of the soil profile is generally poor but recognizable, and the samples were taken at 200 ft. intervals from the "B" horizon. Collection was made using a small shovel, and about 8 ounces of fine soil was collected in each instance. There were placed in Kraft paper sample envelopes and dried at room temperature. After drying, the samples were sieved on an 80 mesh screen, and the minus 80 mesh fraction was analyzed for lead, zinc and copper using a Jarrell atomic absorption spectrometer. Results are given in parts per million.

Attachments

1. Statement of Expenditures
2. Statutory Declaration of Expenditures
3. Statement of Qualifications
4. Mapp KKI; Plan of Kootenay King Claims, Scale $1\frac{1}{4}" = 1$ mile
5. Maps KK II: Geochemical Lines and Data $1" = 400$ ft.

Reported by Lester M. Rogers
L.M. Rogers, Geologist

Endorsed by W.P. Armstrong
W.P. Armstrong, P. Eng.



CANADA)
PROVINCE OF BRITISH COLUMBIA)
TO WIT:)

Statutory Declaration relating to
Expenditures on A Geochemical Survey
of Certain Mineral Claims Located
in the Fort Steele Mining Division

I, Leslie M. ROGERS, Geologist of the City of Kimberley, in the Province of British Columbia, DO SOLEMNLY DECLARE:

1. That I am the person who prepared a geochemical report as a result of a survey carried out on certain mineral claims by Cominco Ltd, owners of said claims.
2. That copies of the said report are being filed with the District Mining Recorder.
3. That attached hereto and marked with a letter "A" upon which I have signed my name at the time of declaring hereof, is a statement of expenditures incurred in connection with the geochemical survey at said claims.

And I make this solemn declaration conscientiously believing it to be true and knowing it is the same force and effect as if made under oath and by virtue of the Canada Evidence Act.

DECLARED BEFORE ME at the)
City of Kimberley in the)
Province of British Columbia)
this 12TH day of)
OCTOBER A.D. 1971)

Leslie M. Rogers

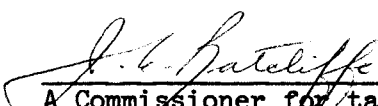
J. G. Ratcliffe
A Commissioner for taking
Affidavits for the Province
of British Columbia

STATEMENT OF EXPENDITURES 1971
KK GROUP, FORT STEELE M.D.

Geochemical Survey


L.M. Rogers, Geologist 6 days at \$55/day during the period September 6-22, 1971	\$330.00
J.W. Cartwright, Geological Technician 5 days at \$45/day during the period Sept. 6-22, 1971	225.00
Living Expenses, 5 days @ \$10/day	50.00
Truck rental, 6 days @ \$10/day	60.00
Sample Preparation:	
J.W. Cartwright, Geological Technician 2 days at \$45/day assays	90.00
264 assays @ \$1 each	264.00
Supervision:	
W.P. Armstrong, P. Eng. 3 days @ \$65/day	<u>195.00</u>
Total	\$1214.00

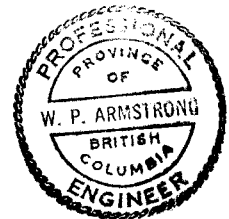
This is Exhibit "A" to the Statutory
Declaration of Leslie M. Rogers,
declared before me at KIMBERLEY
in the Province of British Columbia
this 12TH day of OCTOBER
A.D. 1971.

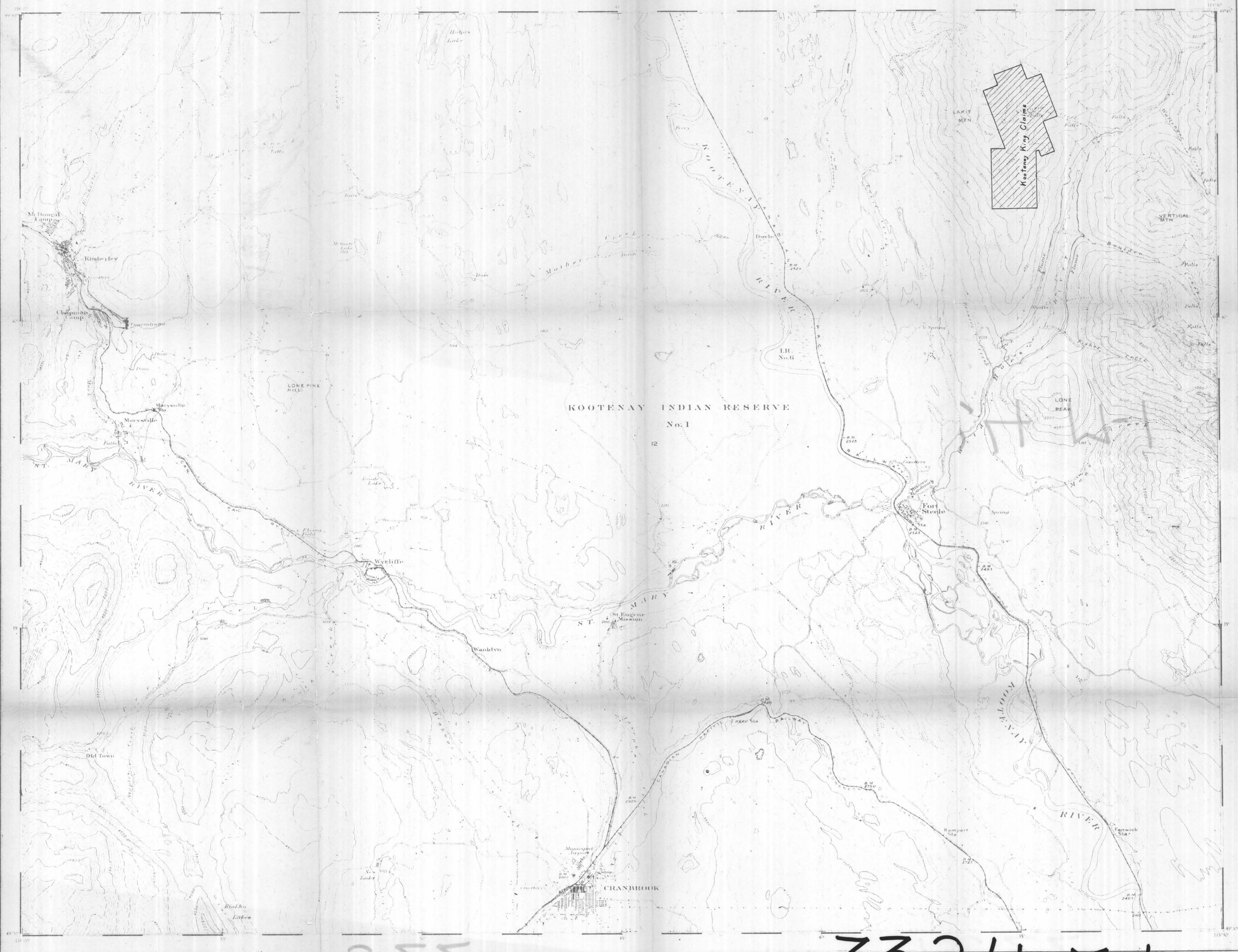

A Commissioner for taking Affidavits
in the Province of British Columbia

STATEMENT OF QUALIFICATIONS

Leslie M. Rogers is a graduate in geology from Brigham Young University, Utah, and has been engaged in geological work for three and one-half years, during which time he has held a number of responsible positions. I consider him to be a competent geologist.


W.P. Armstrong, P. Eng.





CRANBROOK
BRITISH COLUMBIA

SCALE 1:50,000
1.25 inches to 1 mile approximately

PROVISIONAL MAP
CONTOUR INTERVAL 100 FEET
Elevation in Feet above Mean Sea Level

Colors may be obtained from the Map Distribution
Branch, Department of Mines and Technical Surveys,
Ottawa, at 25 cents each.

REFERENCE

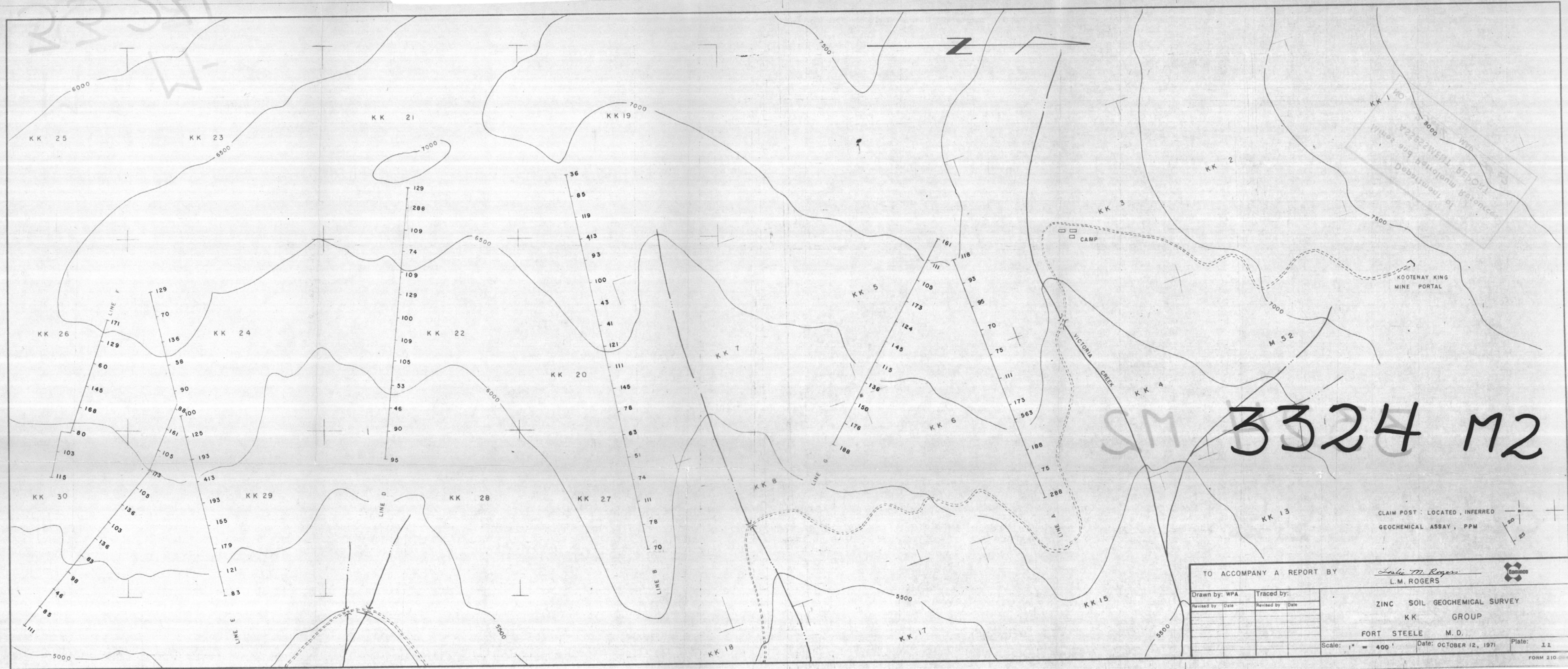
Road and buildings
Road not well travelled
Trail
Railway
Power transmission line
Bridge
Church
School
Post office

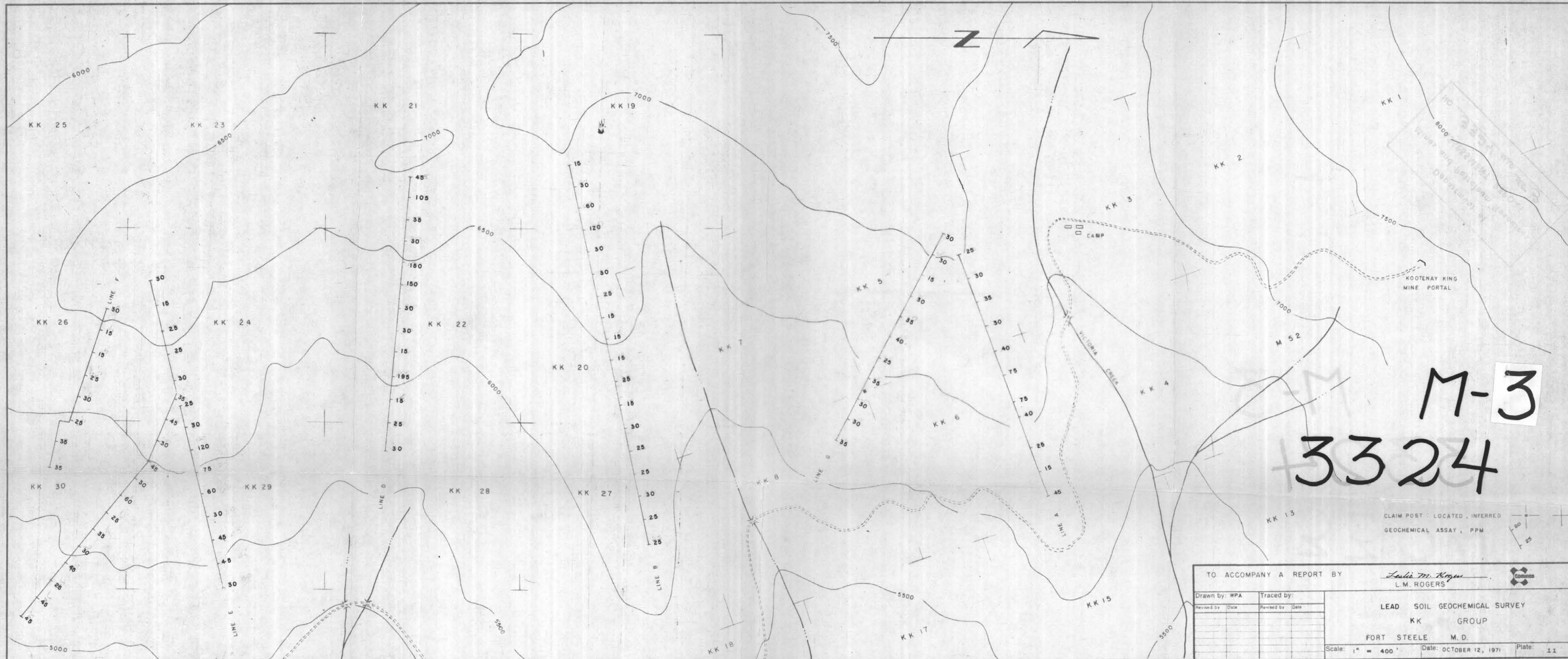
REFERENCE

Bench mark
Indian Reserve boundary
Tourist camping ground
Lake and stream position approximately
Intermittent lake and stream
Marsh or swamp
Contours
Contours (position approximate)
Depression contour

Department of
Mines and Petroleum Resources
ASSESSMENT REPORT
NO. 3324 MAP # 1

3324 M-1



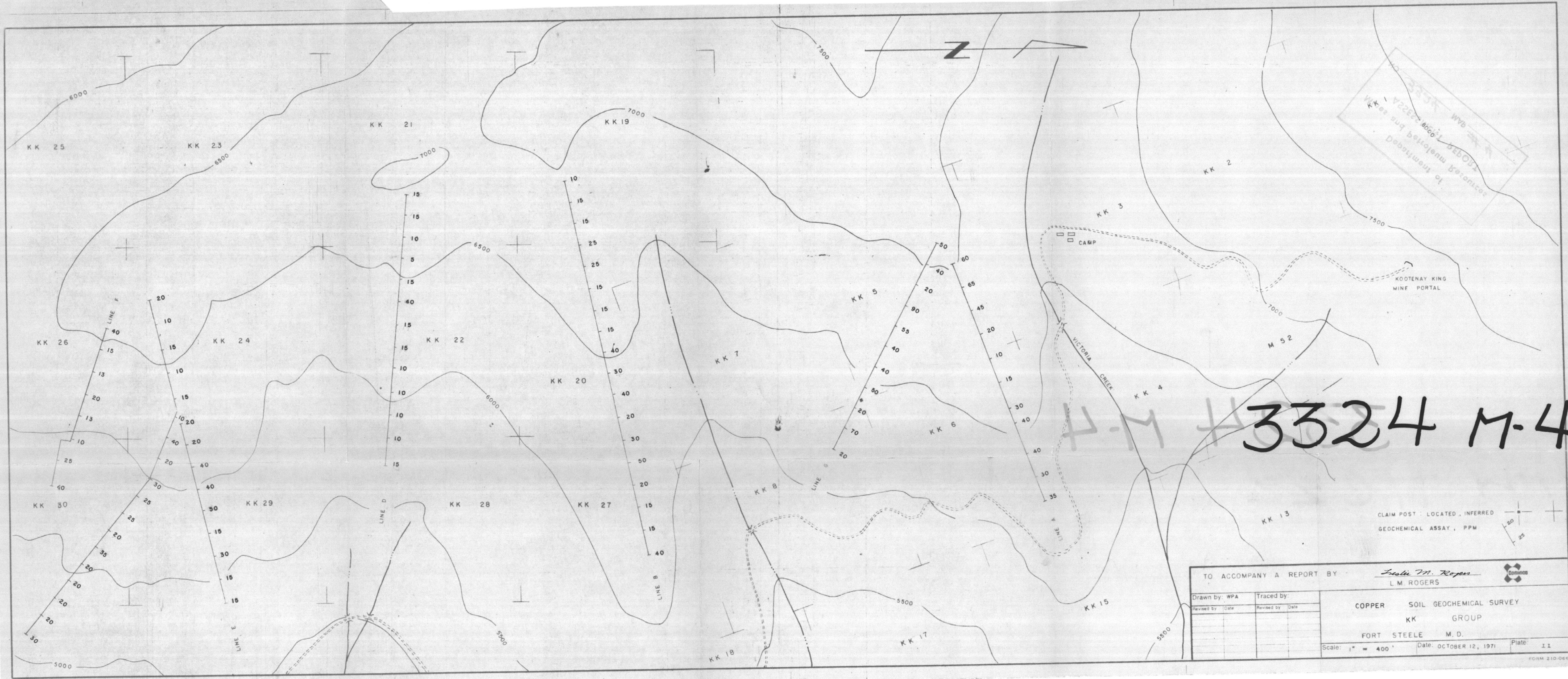


M-3
3324

2335
Kootenay King
Department of
Geology

CLAIM POST : LOCATED , INFERRED
GEOCHEMICAL ASSAY , PPM

TO ACCOMPANY A REPORT BY				<i>Leslie M. Rogers</i> L.M. ROGERS	
Drawn by: WPA		Traced by:		LEAD SOIL GEOCHEMICAL SURVEY KK GROUP FORT STEELE M.D. Scale: 1" = 400' Date: OCTOBER 12, 1971 Plate: 11	
Revised by: / Date:		Revised by: / Date:			



3324
KK 1
V222228000
metre and petroleum geonics
Department of

3324 M-4

CLAIM POST : LOCATED , INFERRED
GEOCHEMICAL ASSAY , PPM

TO ACCOMPANY A REPORT BY				<i>Leslie M. Rogers</i> L.M. ROGERS			
Drawn by: WPA		Traced by:		COPPER SOIL GEOCHEMICAL SURVEY KK GROUP FORT STEELE M.D.			
Revised by: Date		Revised by: Date					
				Scale: 1" = 400' Date: OCTOBER 12, 1971 Plate: 11			