

3347

BALFOUR MINING LTD. (N.P.L.)

OX & KEN GROUP

GRIBBELL ISLAND

103-H-7, SKEENA M.D., B.C.

Lat. $53^{\circ} 20'$ N., Long. $128^{\circ} 57'$ W

by

Department of
Mines and Petroleum Resources
ASSESSMENT REPORT

NO. 3347 MAP

V. CUKOR, P.Eng.

October 30, 1971

TABLE OF CONTENT

	Page
1. Introduction	1
2. Property, Location, Access	1
3. Physical Work	2
4. Surveys	3

ILLUSTRATIONS

	Scale
1.1 Location Map	1" = 136 Miles
2.2 Claim Locations	1" = 1,320 Feet
3.3 Photogeology	1" = 1,320 Feet
4.4 Geochemical Reconnaissance - Sample Locations	1" = 1,320 Feet
5.5 Geochemical Reconnaissance - Cu/Mo Plot	1" = 1,320 Feet
6.6 Geochemical Reconnaissance - Ag Plot	1" = 1,320 Feet
7.7 Topography and Claims	1" = 500 Feet
Appendix "A"	- List of Personnel employed and of Costs of the OX Group Project

BALFOUR MINING LTD.

OX & KEN GROUP

103-H-7, SKEENA M.D., B.C.

1. INTRODUCTION

During 1971, physical, geochemical and geological exploration work was performed on the Gribbell Island Property by BALFOUR MINING LTD. (N.P.L.)

Physical work consisted of trenching on the OX Group and trail work and camp sites on both groups of claims. Trails, old workings, mineral showings and most of the claim posts were located on 1"= 1,320' and 1" = 500' topo sheets, prepared from airphotographs. Some geological mapping was also conducted.

On August 8, additional claims were located to unite the property in one claim group.

Most of the physical work was performed by John Graham. Part of this work was supervised by P.H. Sevensma, P. Eng. although most of the engineering and supervision was carried out by V. Cukor, P.Eng. a director of the company.

2. PROPERTY LOCATION, ACCESS

The property consists of 34 contiguous mineral claims grouped in the OX group. The claim and record numbers and expiry dates are as listed:

Claim No.	Record No.	Expiry Date
OX 1 - 18	36434 - 36451	March 22, 1972
OX 19 - 22	36883 - 36886	August 23, 1972
KEN 1 - 8	36128 - 36135	November 16, 1971
KEN 9 - 12	Tag No.s 243252 - 243255M	August 23, 1972

The claims are located on Gribbell Island, approximately 90 miles S.E. of Prince Rupert and 55 miles S. of Kitimat on the NTS Sheet 103-H-7

The access to the property is by boat or float plane, and the showing areas are easily accessible by trails cut on the OX and the KEN claims.

3. PHYSICAL WORK

(a) Trenching:

Two trenches were excavated on the OX mineral showings, and one in the pyritized mica-schists, with no visible copper mineralization. Two mineralized trenches were sampled by Mr. J. Graham and P.H. Sevensma, P. Eng.

All blasting was done in solid rock, employing Cobra drill. The measurements of the trenches were as follows:

Trench 1	12' x 5' x 5'	= 11 cu. yds.
Trench 2	25' x 6' x 10'	= 56 cu. yds. (main showing)
Trench 3	14' x 4' x 6'	= 12 cu. yds.
	<hr/>	
Total		79 cu. yds.

(a) Trenching (Cont'd)

The personnel employed and expenses applied to this part of the physical work are shown in Appendix "A" attached to the end of the report.

(b) Trail Work:

The access to the showing area was considerably improved by cutting the trails on both the OX and KEN Claims.

OX showings and old workings were in the past accessible by the tubbed road, constructed about 1905, by the Canadian American Company. Presently, only part of this road is still usable after minor repairs. Where it is beyond repair, a new trail has been cut mostly along the old road.

On the KEN claims, the old trail, built by the Gribbell Island Copper Company, was completely grown in, and about 6,000' of new trail had to be cut.

During August 1971, a three man crew was employed on the trail work, using axes and chain saw. All trail work was done after the claims OX 19 - 22 and KEN 9 - 12 were staked and can be applied as assessment work on the whole property.

4. SURVEYS

As a base for survey and mapping, a 1,320' = 1" topo map was prepared from airphotographs by Allwest Forestry & Resources Services Ltd. That map has been enlarged to 1" = 1,000' and 1" = 500', the last one, only for the area covering the OX claims.

4. SURVEYS (Cont'd)

Photogeological study of the Gribbell Island air-photographs revealed a north south trend of fractures as the major trend in the area, but some significant northeast and northwest fracture systems are also developed. A northeast trend seems to be especially important on the OX claims, where mineralization appears along northeast trending skarn lenses.

Chain and Brunton, and Brunton and altimeter survey of trails and old adits was conducted, and all data were plotted on 1" = 1,320' and 1" = 500' scale maps (see figs 2 & 7)

GEOCHEMICAL RECONNAISSANCE

A total of 42 stream silt samples were collected along the waterfront of the south part of Gribbell Island. The samples were packed up in standard soil sample bags, and partly dried in the camp. In the Vancouver Geochemical Laboratories, -80 mesh fraction (-50 mesh in some occasions) was assayed for Mo, Cu and Ag. The method of analysis used was Atomic Absorption by instrument Techtron AA 4 and AA 5, after extracting by hot HClO_4 - HNO_3 digestion (Assay Report No. 71-19-001, September 24, 1971).

The sample locations and all assay results were plotted on the attached 1" = 1,320' maps (see figs. 3 & 6)

The results were rather low, and all values remained in background or threshold zone. Still, there is significance in distributions of moderate high Cu and Mo readings. The stream,

GEOCHEMICAL RECONNAISSANCE (Cont'd)

draining the OX showings area, was sampled at the sea shore and the sample assayed only 15 ppm Cu and 1 ppm Mo. Most of the silt values from the streams between the OX and KEN showings were in the 12 - 50 ppm Cu and 3 - 6 ppm Mo. range, with sharp cut offs on the both sides. In the same area, pieces of mineralized and unmineralized skarnfloat were found in the streams and beach gravel. If compared with the first result, all these values should be considered encouraging, and further geochemical silt sampling and geological follow up is recommended.

Respectfully submitted by:



Vladimir Cukor, P. Eng.

APPENDIX "A"

List of personnel employed and of costs of the OX Group Project

May 13 - October 30, 1971

1. TRENCHING

Name	Occupation	Period	No. of Days	Wages
J. Graham	Prospector	May 13 -24	11	\$ 440.00
K. Anderson	Helper	May 13 -21	8	160.00
P.H. Sevensma	Geologist	May 13 -24	3	450.00
				1,050.00
Travel (Prince Rupert to Gribbell Island)				284.00
Food and Camp Supplies				259.00
Powder, Fuse, rods, etc				144.00
Assays				82.00
Total Trenching				\$1,819.00

2. TRAIL WORK

Name	Occupation	Period	No. of Days	Wages
J. Graham	Prospector	Aug 3 - 18	16	640.00
J. Burns	Helper	Aug 3 - 14	12	286.00
A. MacDonald	Helper	Aug 3 - 14	12	286.00
V. Cukor	Geologist	Aug 3 - 14	2	160.00
				1,372.00
Travel (Prince Rupert to Gribbell Island)				475.00
Food and camp supplies				286.00
Total Trail Work				\$2,133.00

Declared before me at the
of
VANCOUVER, B. C., in the
Province of British Columbia, this
NOV 8 1971
day of
, A.D.
[Signature]
Sub-Mining Recorder

3. PHOTO GEOLOGICAL MAPPING

Topo map 1" - 1,320' billed by Alwest	\$ 332.00
Enlarging 1" - 1,320' map to 1" = 1,000' and 1" = 500'	272.00
Photogeological interpretation of main geological features	300.00
	<hr/>
Total Photogeological Mapping	\$ 904.00
	<hr/> <hr/>

4. GEOCHEMICAL SILT RECONNAISSANCE

Name	Occupation	Period	No. of Days	Wages
<hr/>				
J. Graham	Prospector	Sept 6 - 17	12	480.00
V. Cukor	Geologist	Sept 6 - 17	12	960.00
				<hr/>
				1,440.00
Travel (Prince Rupert to Gribbell Island)				526.00
Food and Camp supplies				136.00
Assays				92.00
				<hr/>
Total Geochemical Reconnaissance				\$2,194.00
				<hr/> <hr/>

5. REPORT

V. Cukor	Geologist	2 days	160.00
	Drafting	1 day	40.00
	Typing, printing etc.		50.00
			<hr/>
Total Report			\$ 250.00
			<hr/> <hr/>

SUMMARY

1. Trenching
 2. Trail Work
 3. Photogeological Mapping
 4. Geochemical Reconnaissance
 5. Report
- Total

Declared before me at the
 of **VANCOUVER, B. C.** in the
 Province of British Columbia, this **NOV 8 1971**, A.D.
 day of *November*
Sub - Mining Recorder

A Commissioner for taking Affidavits within British Columbia or
 A Notary Public in and for the Province of British Columbia.

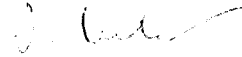
\$1,819.00
2,133.00
904.00
2,194.00
250.00
<hr/>
\$7,300.00
<hr/> <hr/>

AFFIDAVIT

I, Vladimir Cukor, with address at 3169 West 20th Avenue, Vancouver, B.C. hereby declare:

In the matter of the OX Group Report and the list of personnel employed and costs incurred as listed in Appendix "A" of this report, that I have inspected and/or carried out personally the work and that the information contained in Appendix "A" is true and accurate to the best of my knowledge and belief.

Signed



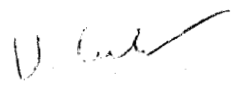
V. Cukor, P. Eng.

CERTIFICATE

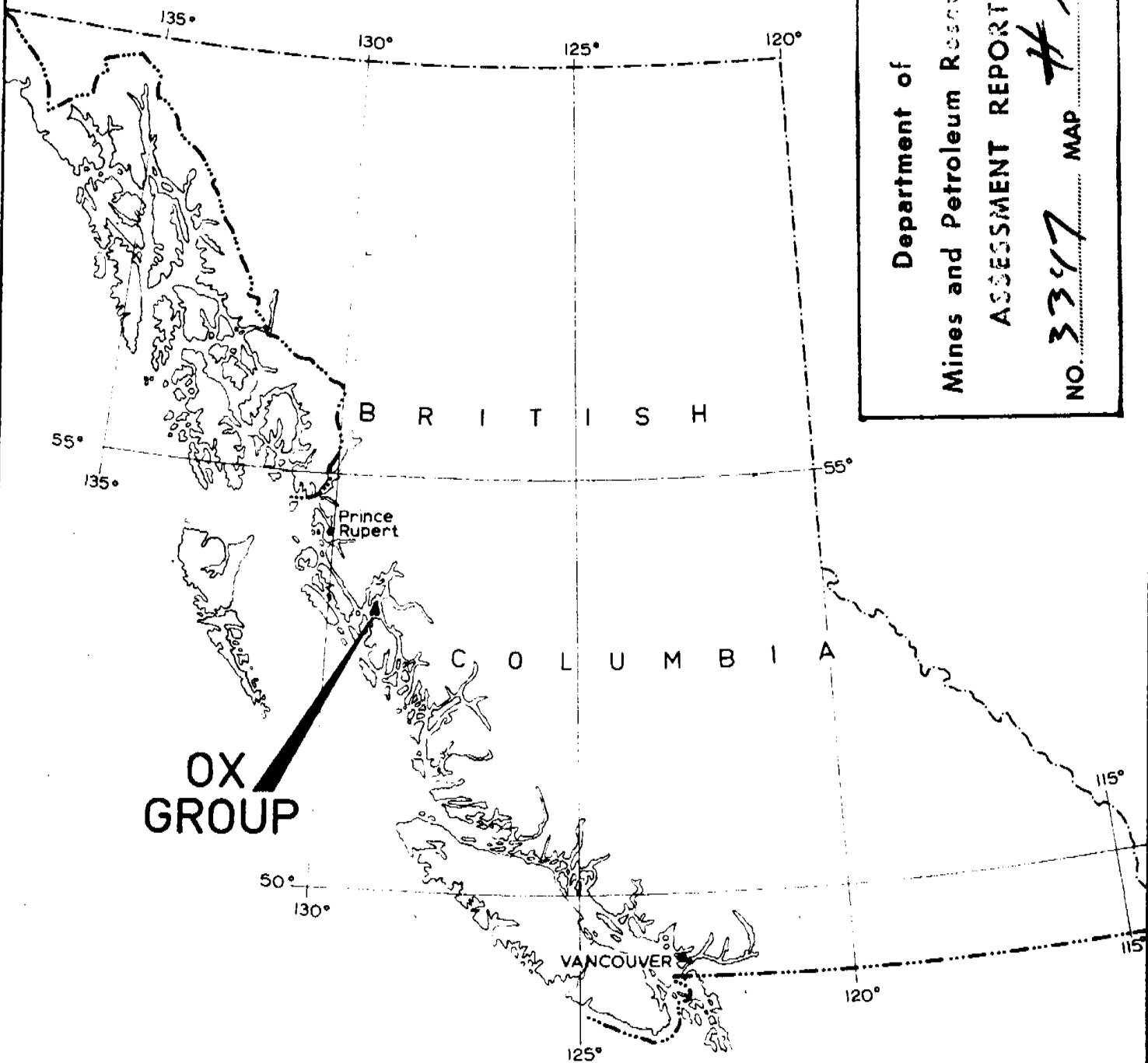
I, Vladimir Cukor, with address at 3169 West 20th Avenue, Vancouver, British Columbia, DO HEREBY CERTIFY:

1. That I am a Geological Engineer
2. That I graduated at the University of Zagreb, Yugoslavia in 1963.
3. That I am a Registered Professional Engineer in the Geological Section of the Association of Professional Engineers of the Province of British Columbia
4. That I have practised my profession as a Geological Engineer for the past eight (8) years both in Yugoslavia and Canada
5. That all information given in this report is based on personal examinations.
6. That I am a director of BALFOUR MINING LTD. (N.P.L.)

October 30, 1971


V. Cukor, P. Eng.

Department of
Mines and Petroleum Resources
ASSESSMENT REPORT
NO. 3397 MAP #1



OX GROUP

LOCATION MAP
BALFOUR MINING LTD (N.P.L.)
GRIBBELL ISLAND
OX GROUP

V. Cull

SCALE: 0 136 MILES

Fig. 1



- LEGEND:
- Trail
 - * Mineral Showing
 - Y Old Adit
 - Claim Post

Department of
Mines and Petroleum Resources
ASSESSMENT REPORT
NO. 3347 MAP #2

BALFOUR MINING LTD. (N.P.L.)

GRIBBELL ISLAND

OX GROUP

3347

CLAIM LOCATIONS

M-2

Topography by Zeiss Stereotope
ALLWEST
FORESTRY AND RESOURCES SERVICES LTD.

To accompany report by V. Cukor P. Eng. on the Ox Group dated Oct. 30, 1971.

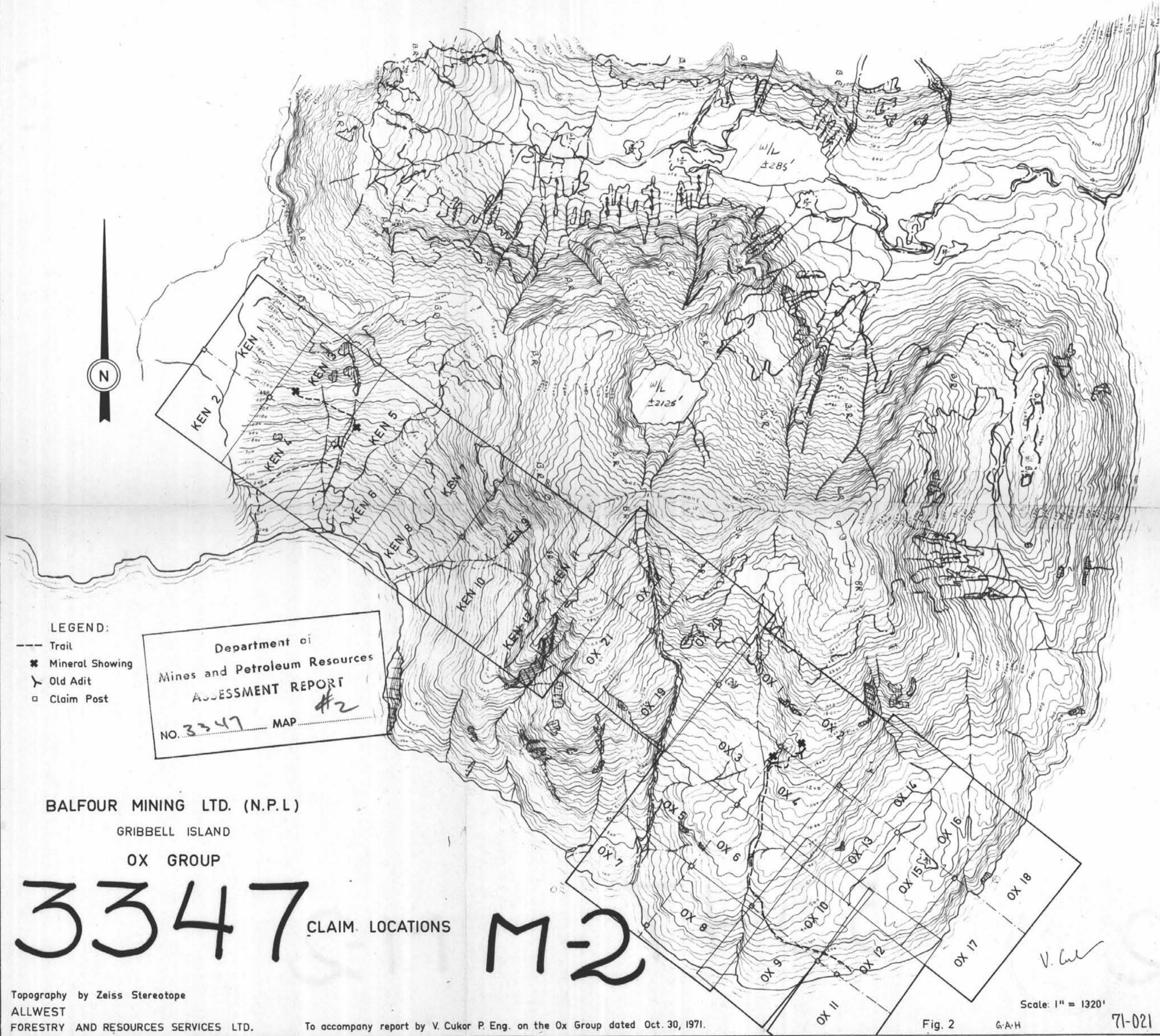
Scale: 1" = 1320'

Fig. 2

G.A.H

71-021

V. Cukor





Department of
Mines and Petroleum Resources
ASSESSMENT REPORT
NO. 3347 MAP #3

BALFOUR MINING LTD. (N.P.L.)
GRIBBELL ISLAND
OX GROUP

PHOTOGEOLOGY

V. Cukor

23, 24 & 25

N

Department of
Mines and Petroleum Resources
ASSESSMENT REPORT
NO. 3347 MAP #4

BALFOUR MINING LTD. (N.P.L.)
GRIBBELL ISLAND
OX GROUP

GEOCHEMICAL RECONNAISSANCE
SAMPLE LOCATIONS

Topography by Zeiss Stereotope
ALLWEST
FORESTRY AND RESOURCES SERVICES LTD.

To accompany report by V. Cukor P. Eng. on the Ox Group dated Oct. 30, 1971.

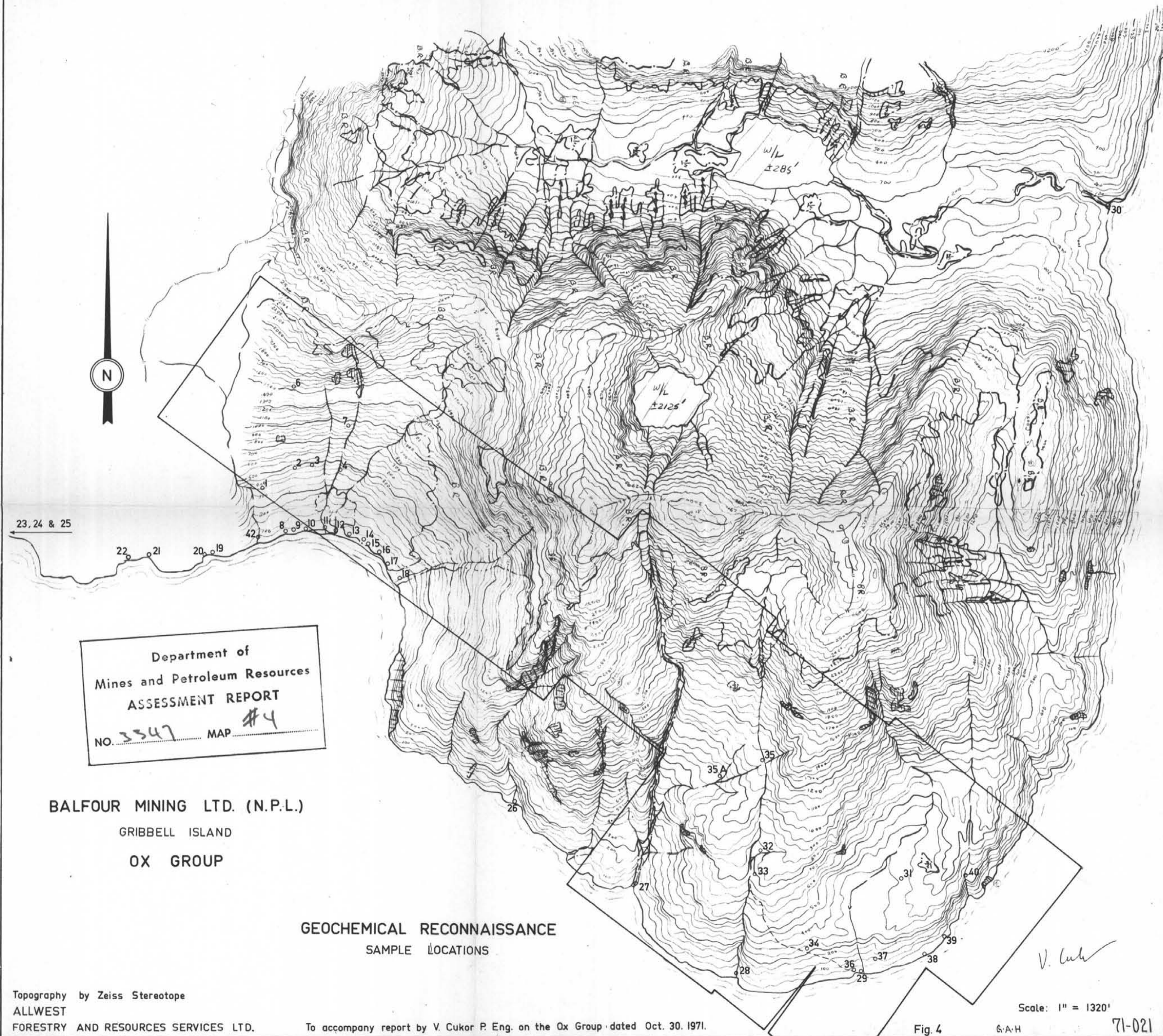
Scale: 1" = 1320'

Fig. 4

G.A.H

71-021

V. Cukor





Area of interest

Department of
Mines and Petroleum Resources
ASSESSMENT REPORT

NO. 3347 MAP #5

BALFOUR MINING LTD. (N.P.L.)

GRIBBELL ISLAND

OX GROUP

GEOCHEMICAL RECONNAISSANCE

Cu/Mo PLOT

Topography by Zeiss Stereotope

ALLWEST

FORESTRY AND RESOURCES SERVICES LTD.

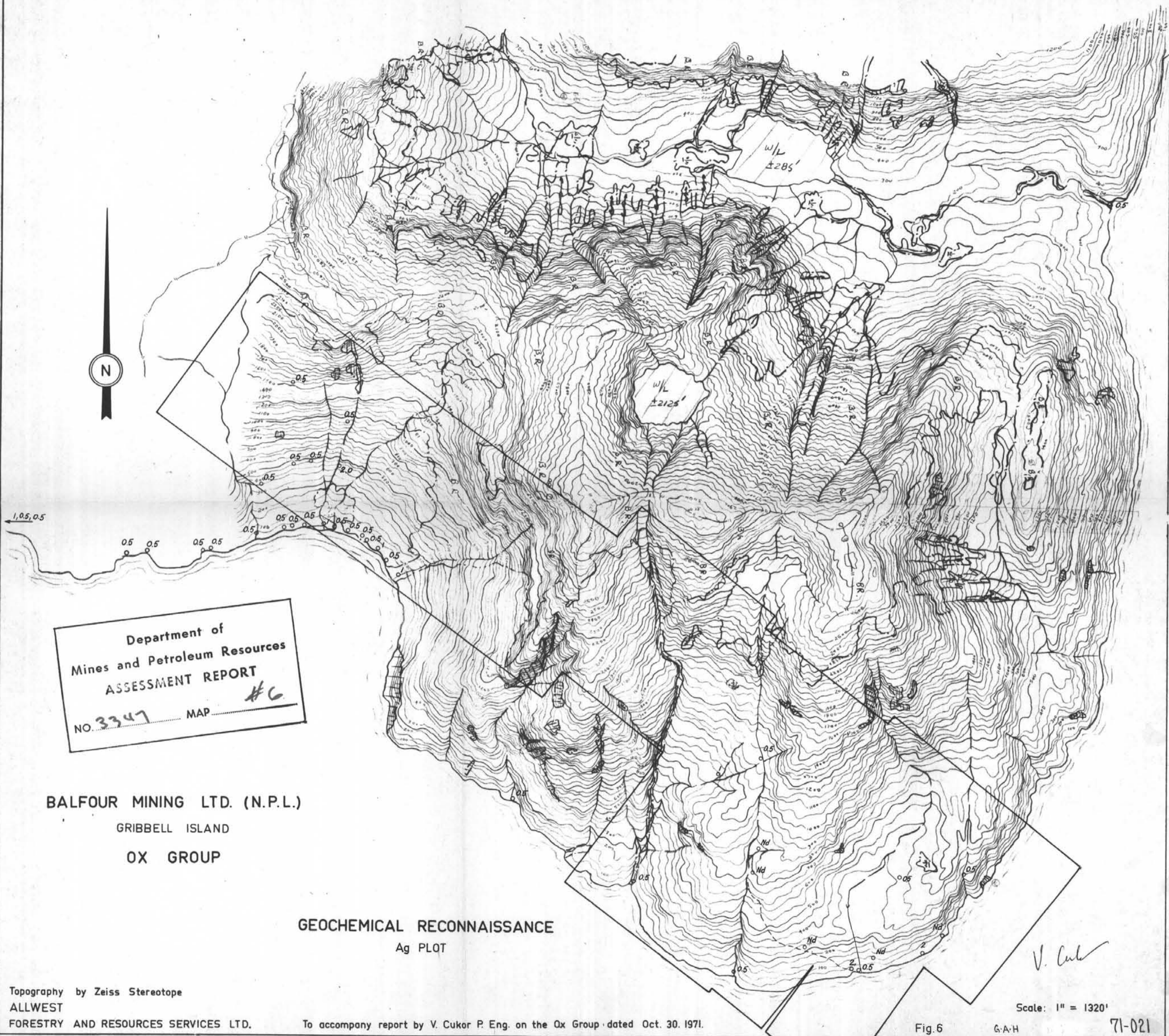
To accompany report by V. Cukor P. Eng. on the Ox Group dated Oct. 30. 1971.

Scale: 1" = 1320'

Fig.5

G.A.H

71-021



Department of
Mines and Petroleum Resources
ASSESSMENT REPORT

NO. 3347

MAP

#6

BALFOUR MINING LTD. (N.P.L.)

GRIBBELL ISLAND

OX GROUP

GEOCHEMICAL RECONNAISSANCE

Ag PLOT

Topography by Zeiss Stereotope

ALLWEST

FORESTRY AND RESOURCES SERVICES LTD.

To accompany report by V. Cukor P. Eng. on the Ox Group dated Oct. 30. 1971.

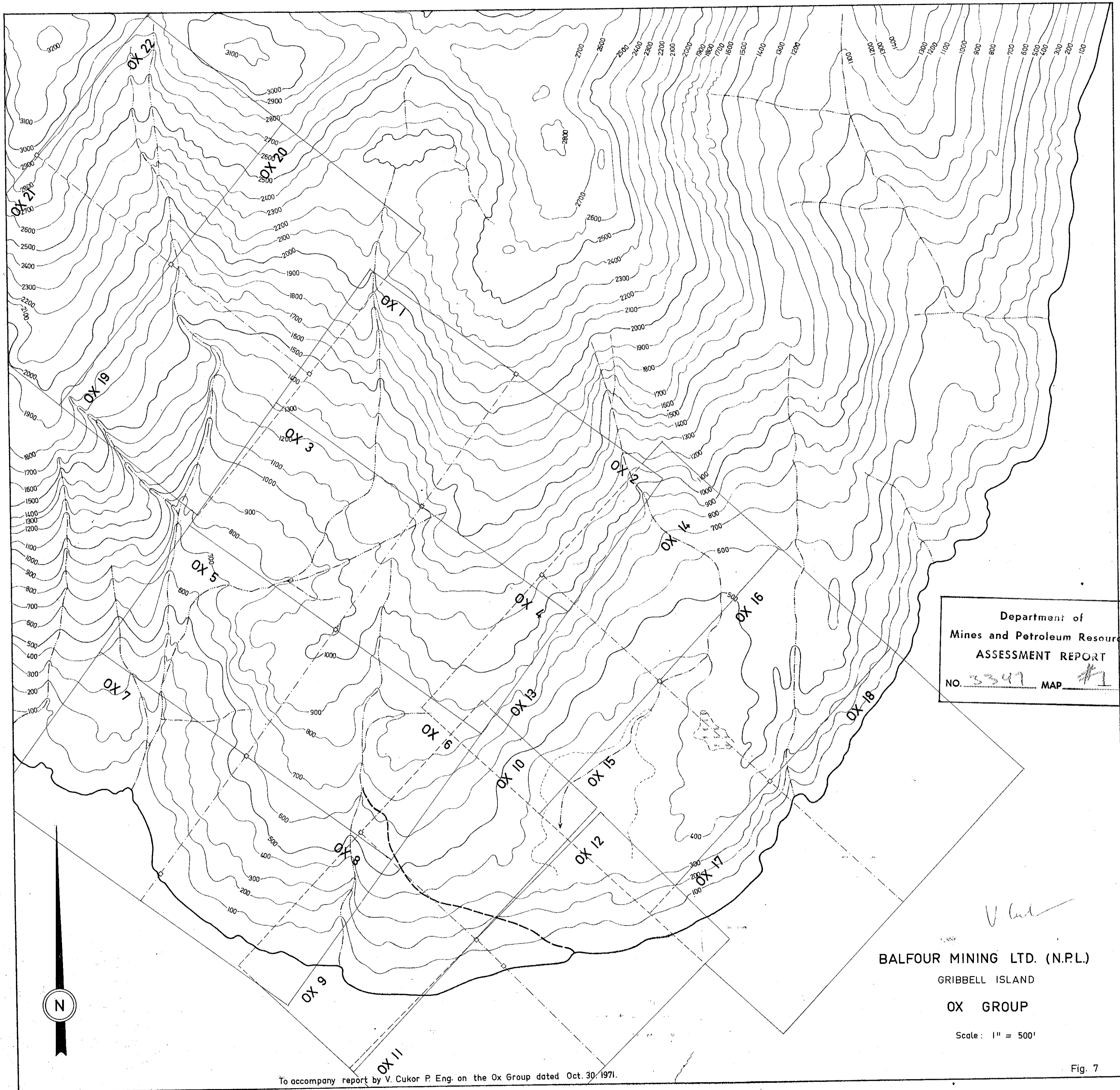
Scale: 1" = 1320'

Fig.6

G.A.H

71-021

V. Cukor



Department of
 Mines and Petroleum Resources
 ASSESSMENT REPORT
 NO. 3247 MAP #1

V. Cukor
 BALFOUR MINING LTD. (N.P.L.)
 GRIBBELL ISLAND
 OX GROUP

Scale: 1" = 500'

To accompany report by V. Cukor P. Eng. on the Ox Group dated Oct. 30, 1971.

Fig. 7