

Department of
Mines and Petroleum Resources
ASSESSMENT REPORT
NO. 3602 MAP

GEOCHEMICAL REPORT

ON

MINERAL CLAIMS

Hot Punch (L1976), Iron Duke (L1977),
Adonis (L1865), and Doe No. 1

April 27th 1972

Jedway Camp, Harriet Harbour, Queen Charlotte Islands
SKEENA MINING DIVISION
BRITISH COLUMBIA

52° 18' N, 131° 12' W

103 B / 6 E

Owned by JEDWAY IRON ORE LIMITED

Supervision and Report by: D. H. James, P. Eng.

Work completed between March 16th and 23rd, 1972.

3602

TABLE OF CONTENTS

	<u>Page</u>
Introduction	1
Location. Access. Topography	1
Geology	2
Geochemical Sampling Techniques	2 - 3
Geochemical Interpretation	3
Conclusions	3 - 4
Appendix - Statement of Expenditures	5

LIST OF ILLUSTRATIONS

	<u>Following Page</u>
Figure 1 Location Map (Scale 1" to 30 miles)	1
Figure 2 Claim Map (Scale 1" to 1,000')	1
Figure 3 Copper Geochemistry (Scale 1" to 100')	In Pocket

INTRODUCTION

A geochemical survey was carried out by the Granby Mining Company Limited on Mineral Claims Hot Punch (L1976), Iron Duke (L1977), Adonis (L1865), and Doe No. 1, on behalf of its subsidiary Jedway Iron Ore Ltd. The work was completed between March 16th and March 23rd, 1972. The field work was directed by W. J. Wilkinson, B.Sc., under the supervision of the writer. Mr. Wilkinson is employed as district geologist for The Granby Mining Company Limited, has considerable experience in geochemical surveys and is competent to conduct the work.

LOCATION, ACCESS

The claims are located approximately one mile east of the south end of Harriet Harbour, Moresby Island, which is approximately seventy-one miles southeast of Sandspit.

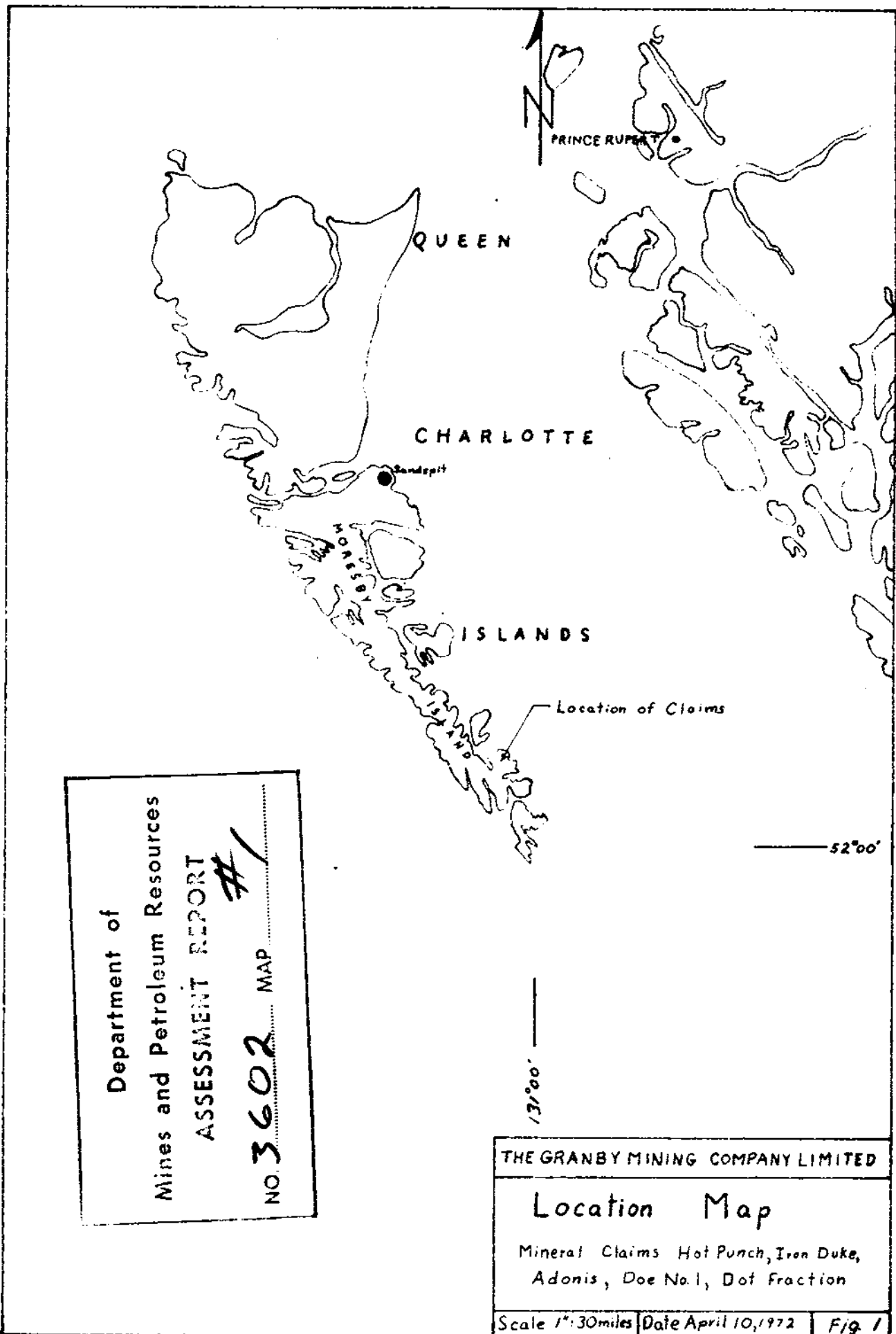
Access to Harriet Harbour is by float-equipped aircraft, or by boat.

TOPOGRAPHY

The claims occupy the height of land and adjoining steep slopes between Harriet Harbour on the west, and Ikeda Cove on the east. Elevations range approximately from 500 to 1,200 feet above sea level.

Vegetation cover is chiefly large fir and cedar trees; undergrowth is generally not thick enough to impede walking.

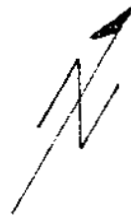
Previous mining activity on these claims somewhat restricts the area which is accessible for sampling.



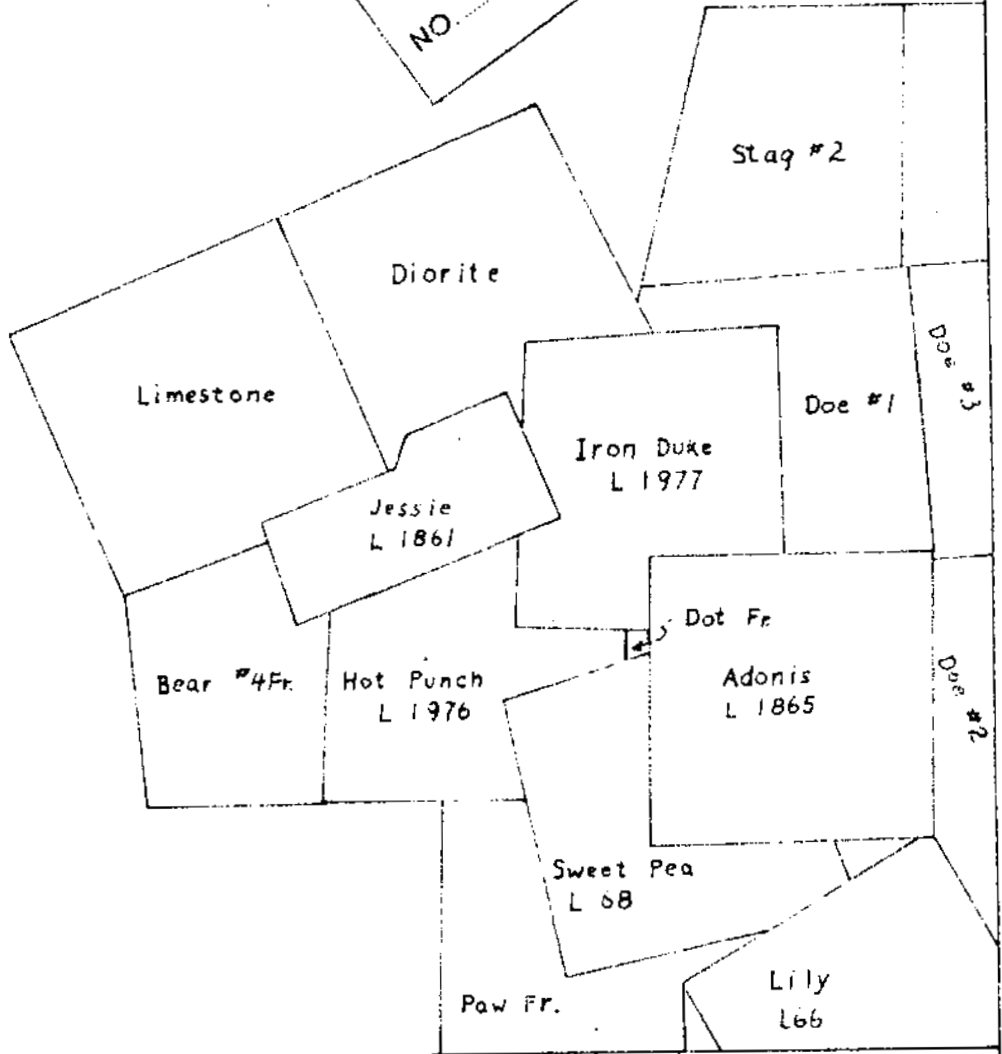
Department of
 Mines and Petroleum Resources
 ASSESSMENT REPORT #1
 NO. 3602 MAP

THE GRANBY MINING COMPANY LIMITED		
Location Map		
Mineral Claims Hot Punch, Iron Duke, Adonis, Doe No. 1, Dot Fraction		
Scale 1"=30miles	Date April 10, 1972	Fig. 1

Harriet
Harbour



Department of
Mines and Petroleum Resources
ASSESSMENT REPORT
NO. 3602 MAP #2



THE GRANBY MINING COMPANY LIMITED

Claim Map

Mineral Claims Hot Punch, Iron Duke,
Adonis, Doe No.1, Dot Fraction
and adjoining claims.

Scale 1" = 1000'

Date April 10, 1972

Fig. 2

GEOLOGY

The claims are underlain by basic volcanic rocks of the Karmutsen formation, overlain by the Kunga formation of which the basal member is grey limestone and the rest in this area is argillite. The age of the Kunga is reported as Karnian. The contact of these formations is extremely irregular due to faulting and cannot be projected any distance with confidence. Overall it appears to trend northwesterly, and the sediments dip steeply northeast.

The formations are intruded by a diorite stock and by numerous dykes of intermediate composition.

The iron deposits in the area consist of magnetite with garnet, pyroxene and chlorite. They have evidently formed by replacement of the volcanics. Replacement has been controlled by faults, dykes, and probably by layering in the volcanics. This seems particularly the case in the principal deposit, the Jessie, where much of the magnetite occurred in rudely tabular segments. No significant amount of the magnetite occurs at the contact of the stock.

Copper was found in a few places in the iron deposits, but was negligible in actual amount. In other deposits of this type, however, copper is economically important, and the old Ikeda mine a short distance away was operated for copper at one time. It was considered worthwhile to conduct the geochemical soil survey described in this report to check for copper in the vicinity of the principal iron deposits.

GEOCHEMICAL SAMPLING TECHNIQUES

The previously cleared southeast boundary of the Adonis Mineral Claim was chained for use as a base line, and lines extending further to the south and west were located by offsetting from lines run out from the baseline, using chain and compass control. These lines were checked by comparison with surveyed road locations and other surface features.

Samples were taken at 100' intervals along lines spaced 200' apart. These lines were oriented N 28° W (true bearing).

Samples were taken using a steel-bladed mattock to dig a hole, then taking a handful of soil from the B horizon. The soil sample was placed in a high wet strength Kraft paper sample bag.

The samples were submitted to Core Laboratories Canada Ltd., 325 Howe Street, Vancouver 1, B.C., for analysis for copper. Here the samples were first dried and screened, with the -80 mesh fraction being used for assay. Analysis was by atomic absorption spectrometer following hot perchloric acid extraction.

The results are shown in Figure 3 of this report.

GEOCHEMICAL INTERPRETATION

Of the 173 samples taken, 49% were in the range 0 - 39 p.p.m., 29% were in the range 40 - 79 p.p.m., 10% were in the range 80 - 119 p.p.m., 7% were in the range 120 - 159 p.p.m., and 5% were 160 p.p.m. or more. Values ranged from 1 to 310 p.p.m. The anomalous threshold was set at 80 p.p.m., and values of 120 p.p.m. and greater were considered clearly anomalous.

The survey is too limited in extent to indicate anomalous levels with any great degree of confidence, but is adequate to indicate where further attention might be directed.

CONCLUSIONS

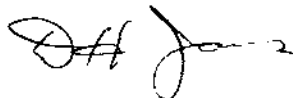
The survey indicates two areas which warrant some further attention.

The first is on the Adonis claim centered at 25 E 11 N on the grid. This area lies immediately east of a low magnetic anomaly and near the projected volcanic - limestone contact. The magnetic anomaly was known as the North Adonis and has been drilled to within 200 feet of the geochemical anomaly, but the change in soil values is quite sharp. It is possible copper mineralization occurs peripheral to magnetite in the magnetic anomaly, and the possibility is worth checking.

The second anomaly occurs in a similar relationship on the Iron Duke claim, north of the northwest end of the same magnetic anomaly. Overburden in this area is extensive and it was con-

sidered to be mostly underlain by sediments. The geochemical results indicate that some further work can usefully be done.

The anomalies are not high compared with those commonly associated with economic mineralization, but may be significant in the climate and terrain of the Jedway area. They do not appear to be particularly important, and should preferably be checked in connection with other work to minimize expense.



D. H. James, M.Sc., P. Eng.,
Geologist,
The Granby Mining Company Limited.

APPENDIX STATEMENT OF EXPENDITURES

Wages

Employees: W. J. Wilkinson, geologist, supervisor, Smithers, B.C.
March 16, 17, 22, 23 (4 days)

L. B. Warren, prospector, sampler, Smithers, B.C.
March 17 - 23 inclusive (7 days)

D. R. Dumont, sampler, Smithers B.C.
March 17 - 23 inclusive (7 days)

Rates of pay and amounts paid:

W. J. Wilkinson	4 days at \$1150/month (4/26 x \$1150)	\$ 176.92
L. B. Warren	7 days at \$ 700/month (7/26 x \$ 700)	188.46
D. R. Dumont	7 days at \$ 550/month (7/26 x \$ 550)	<u>148.08</u>
	TOTAL WAGES	\$ 513.46

Assays

173 samples. Core Laboratories Invoice No. 961-107 \$ 216.25

Transportation

Aircraft - Trans Provincial Airlines Ltd. Invoices 21442, 21451 \$ 525.00

Camp Costs

15 man-days @ \$8.00 per day \$ 120.00

Professional Supervision and Report Preparation \$ 200.00

TOTAL: \$ 1574.71

Canada

In the Matter of

Province of British Columbia

To Wit:

I, D. H. James

, of 2000 - 1055 West Hastings

Street, Vancouver

in the Province of British Columbia.

I do Solemnly Declare that in the matter of the geochemical survey on the

Hot Punch. Iron Duke. Adonis and Doe No. 1 mineral claims, March 1972,

the persons employed. days worked, rates and amounts paid were as

follows:

W.J. Wilkinson March 16, 17, 22, 23
4 days at \$1150/month

\$ 176.92

L.B. Warren March 17 - 23
7 days at \$700/month

\$ 188.46

D.R. Dumont March 17 - 23
7 days at \$550/month

\$ 148.08

D.H. James. P. Eng.
2 days at \$100/day

\$ 200.00

\$ 713.46

and that other costs detailed in the attached
appendix total

\$ 861.25

\$ 1574.71

And I make this solemn Declaration conscientiously believing it to be true, and knowing that it is of the same force and effect as if made under oath, and by virtue of the Canada Evidence Act.

Declared before me

at Vancouver

in the Province of British Columbia.

this 27 day of

April

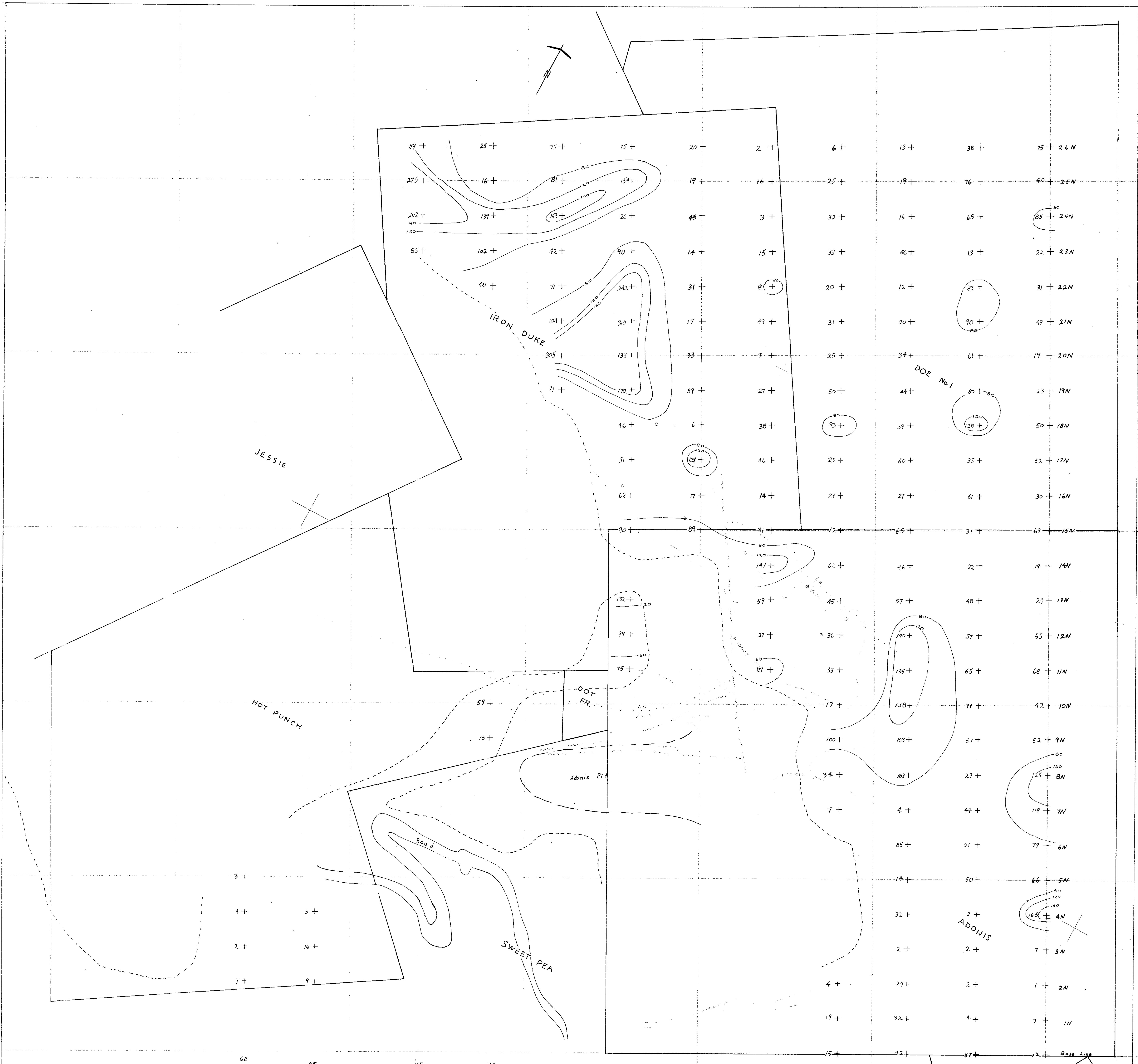
A.D. 1972

Jill Surber

A Notary Public in and for the Province of British Columbia
A Commissioner for taking affidavits for British Columbia

Subjunctive Recorder

D.H. James



LEGEND

- 170+ Sampling station, with soil analysis, ppm Cu
- 80 Contour line
- Approximate limit, mining activity
- Claim boundary

3602 M3

THE GRANBY MINING COMPANY LIMITED
 GEOCHEMISTRY - COPPER
 Harriet Harbour Area Claims
 To accompany geological report by D.H. James, P.Eng., on mineral claims: Hot Punch, Iron Duke, Adonis, Doe No. 1, Harriet Harbour, Harbourside Island, Skeena P.D., dated April 10, 1972.
 Scale 1"=100' April 10, 1972 Drawn by W.J.W. Figure 3

Department of
 Mines and Petroleum Resources
 ASSESSMENT REPORT
 3602 M3