

RETURN TO
DEPARTMENT OF MINES AND PETROLEUM RESOURCES
VICTORIA, BRITISH COLUMBIA

LINE CUTTING REPORT

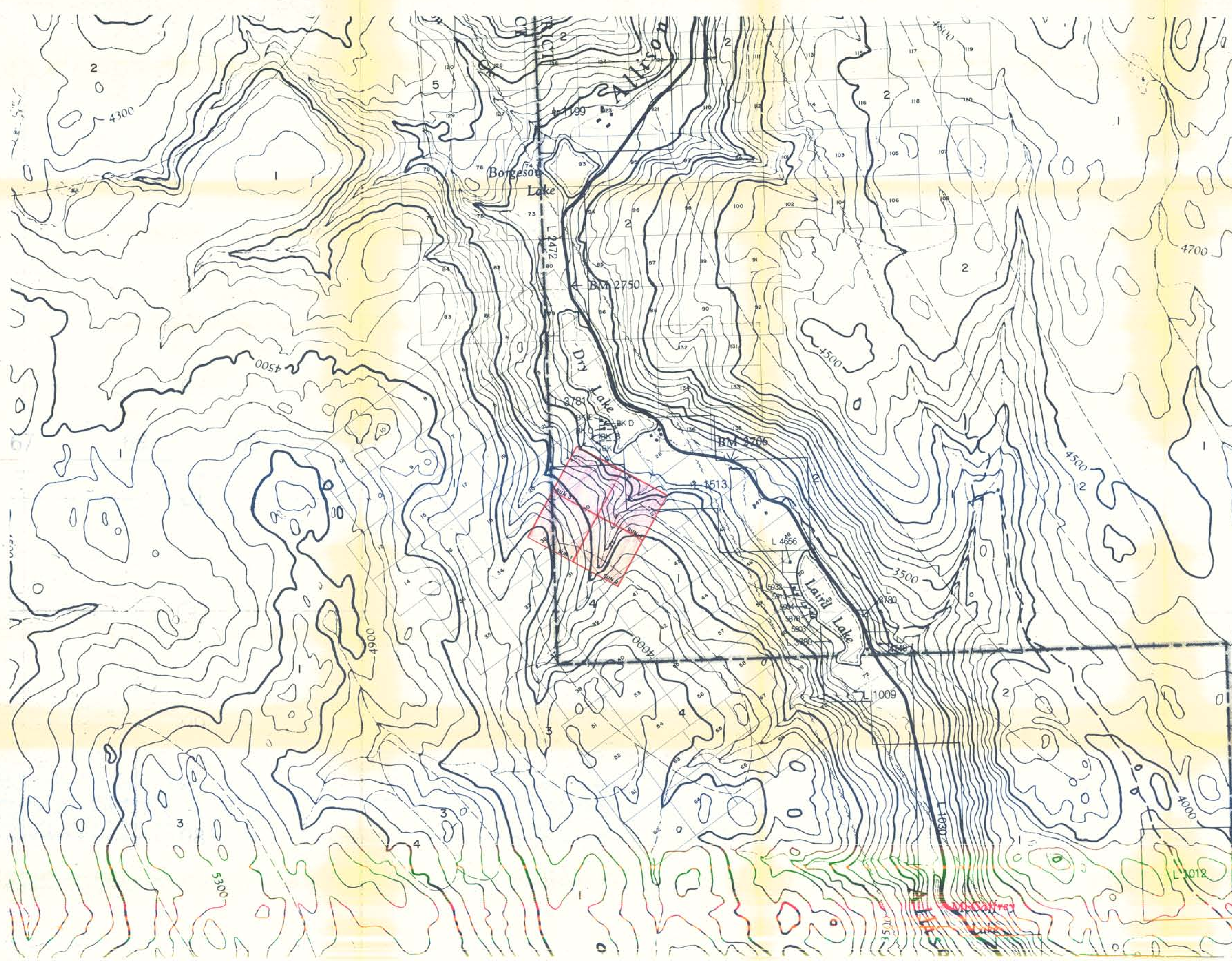
SUN MINERAL CLAIMS ^{SUN?} (SYM GROUP)?
SIMILKAMEEN MINING DIVISION

OWNER: Coin Canyon Mines Ltd.,

WORK DONE BETWEEN: May 1, 1971 and June 15, 1971

92H/10E

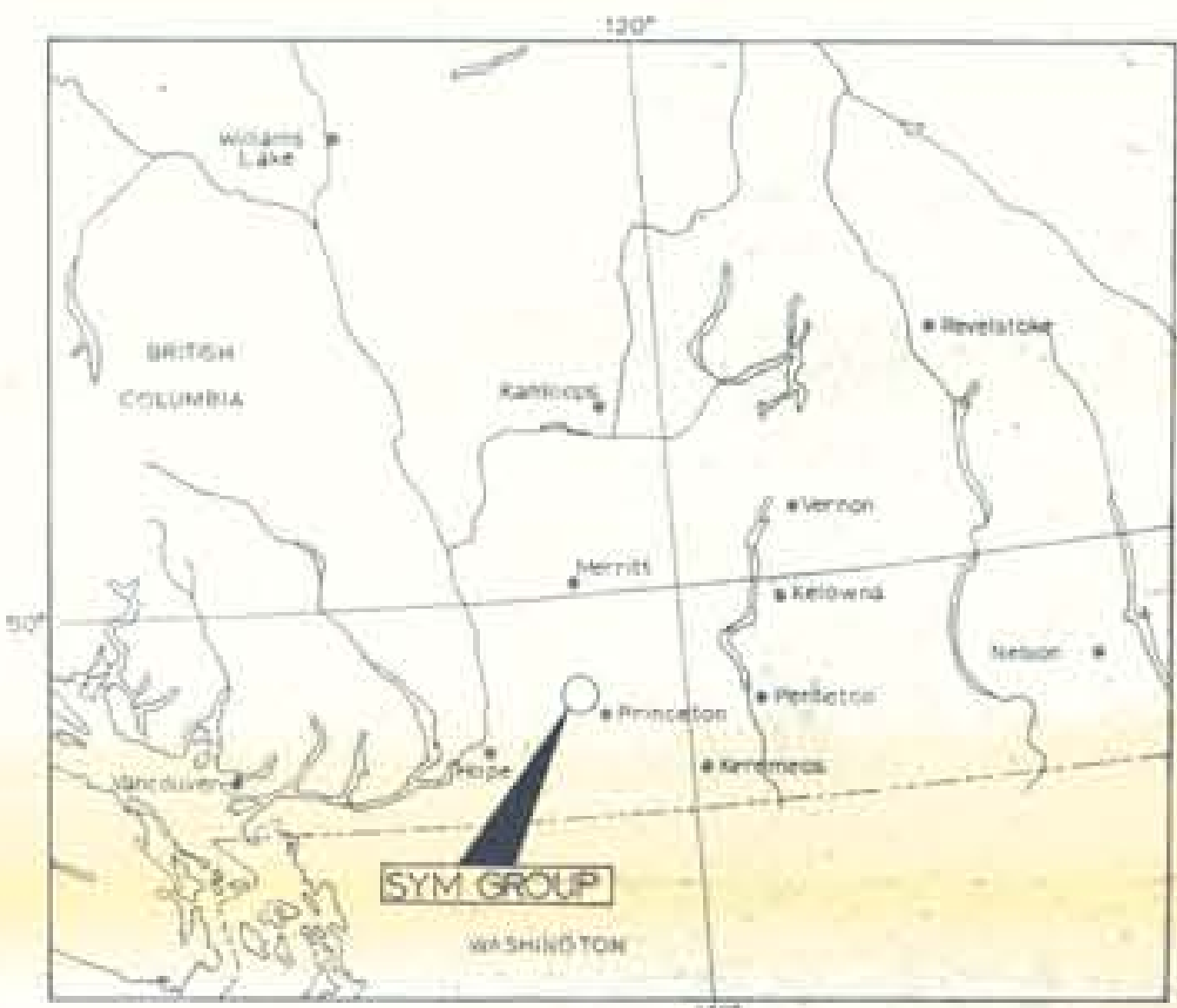
3606



PRELIMINARY GEOLOGY
AND
CLAIMS MAP

LEGEND

- MIOCENE OR EARLIER
 - PRINCETON GROUP
 - 5 Varicoloured andesite and basalt
- CRETACEOUS
 - LOWER CRETACEOUS
 - 4 KINGSWALE GROUP
Mainly volcanic breccia
 - 3 SPENCE BRIDGE GROUP
Hard reddish andesite and basalt
- JURASSIC
 - 2 COAST INTRUSIONS
Reddish, siliceous granite and gneodiorite
- TRIASSIC
 - UPPER TRIASSIC
 - 1 NICOLA GROUP
Varicoloured lava, argillite, tuff, limestone and sericite schist



Scale 1 inch equals 50 miles
Miles 0 20 40 60 80 100

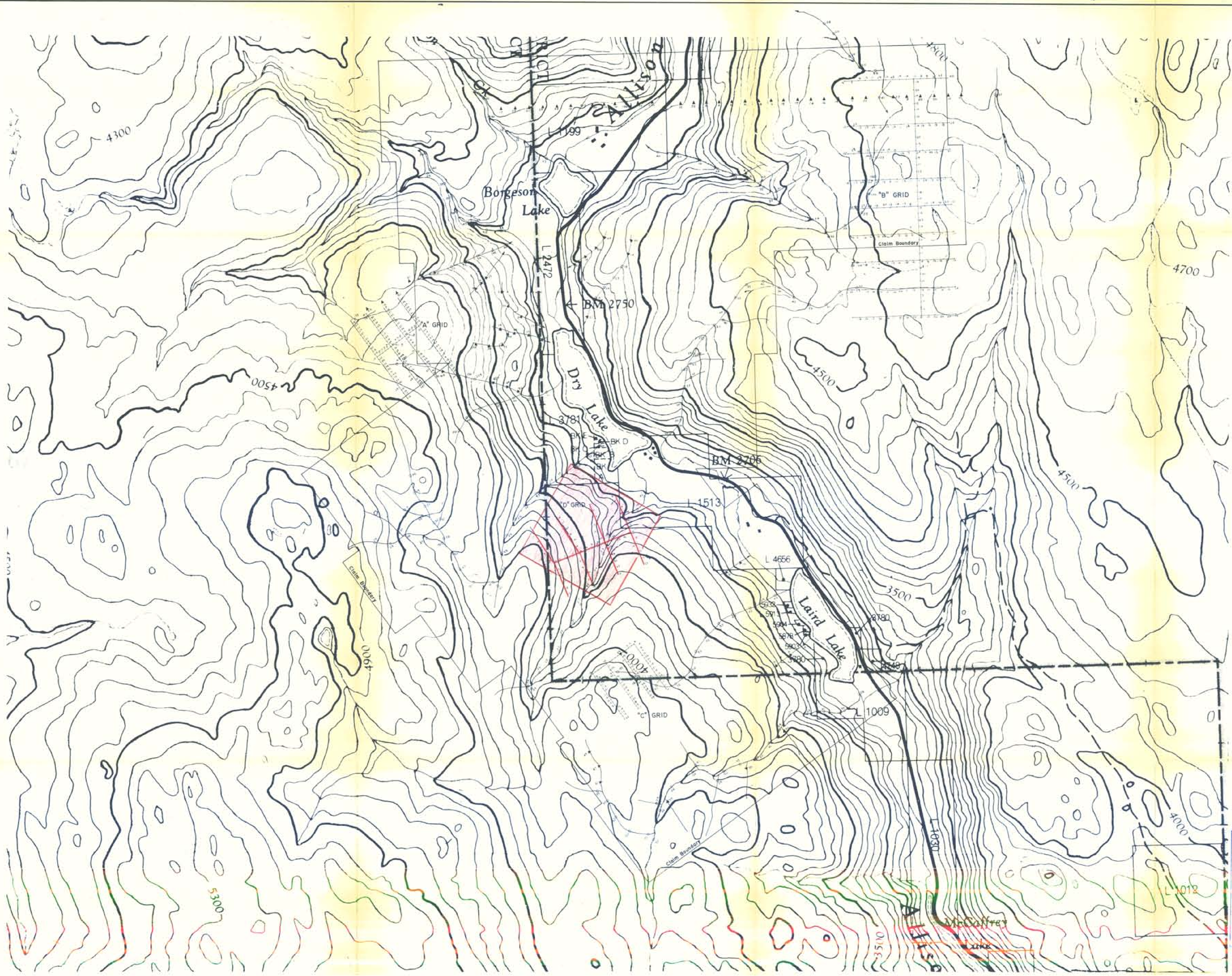
3606
COIN CANYON MINES LTD.

M-1 SYM GROUP
SIMILKAMEEN MINING DIVISION
PRINCETON, B.C.



45° 38' N 120° 39' W
DATE: MAY, 1971 DRAWN: J.R.L.

Department of
Mines and Petroleum Resources
1-5223/1111 R. P.O.U.F.
10-3606 MAP



COPPER GEOCHEMISTRY PLOT

LEGEND

- P.P.M. COPPER (Silt)
- P.P.M. COPPER (Soil)
- 0 - 40 P.P.M. (background)
- 41 - 50 P.P.M. (threshold)
- 51 - 60 P.P.M. (slightly anomalous)
- 61 - 80 P.P.M. (moderately anomalous)
- 81 + (highly anomalous)



Department of
 Mines and Petroleum Resources
 ACCESSIBLE REPORT
 03606 MAP #3

COIN CANYON MINES LTD.
SYM GROUP
 SIMILKAMEEN MINING DIVISION
 PRINCETON, B.C.



49° 58' N 120° 38' W
 DATE: MAY, 1971 DRAWN: J.R.L.