

3632

REPORT ON

GEOLOGICAL WORK

P. O. D. GROUP

Tunkwa Lake Area
Kamloops Mining Division

92I/10W

Lat. $50^{\circ}36' N$
Long. $120^{\circ}55' W$

N.T.S. Map No. 92I/10

May 10, 1972

Department of
Mines and Petroleum Resources
ASSESSMENT REPORT
NO. 3632 MAP.....

Andrew E. Nevin, Ph. D., P. Eng.
Andrew E. Nevin Consultants Ltd.
426-470 Granville St.
Vancouver 2, B. C.



On work performed August 1 - 7, 1971

TABLE OF CONTENTS

	<u>Page</u>
Introduction	1
Location and Access	1
Work Performed	1
Geology	2
Mineralization and Alteration	2
Conclusions.	2
Declaration of Costs	3

List of Illustrations

1. Location Map
2. P.O.D. Claims (Geologic Map)

INTRODUCTION

Geologic mapping, linecutting, and an I. P. survey were carried out on the P.O.D. claims July 29 - August 7, 1971, on behalf of Dusty Mac Mines Ltd.

CLAIMS

The subject claims and their ownership are as follows:

<u>Name</u>	<u>Record Number</u>	<u>Owner</u>	<u>Free Miners Cert. No.</u>
P.O.D. #1 - 4	#79422-25)		102046
P.O.D. #6	79427)		
P.O.D. #8	79429)	D. J. McDonald	102046
P.O.D. #10	79431)		
P.O.D. #11-16	79432-37	Maxwell A. Marten	104892
P.O.D. #17-24	88362-69	J. E. McDonald	100099
P.O.D. #25-28	79446-49)		
P.O.D. #29-32	97141-44)	W. Bonin	100101

LOCATION AND ACCESS

The property is situated about 4 miles southwest of Tunkwa Lake which can be reached by a well maintained gravel road from the Trans-Canada Highway at Savona. Logging roads provide good local access to most parts of the P.O.D. claims.

WORK PERFORMED

Within the past few years the following work has been done on the P.O.D. group:

1. Partial transit and chain survey in 1969
2. Minor trenching by owners in 1970 and 1971
3. Linecutting and I.P. survey July 29 - August 6, 1971
4. Geologic mapping Aug. 1-2, 6-7, 1971

GEOLOGY

As shown on the attached geologic map only about 10 percent of the area is outcrop; the rest is glacial gravels. Seventeen of the twenty-nine claims have some outcrop. The exposed rocks are diorite, to the east, and quartz diorite, to the west, with a gradational contact of the hybrid border phase of the Guichon Creek batholith. The diorite is relatively fine-grained and contains about 5 percent hornblende plus biotite. The quartz diorite is medium-grained and contains about 5-10 percent quartz and 5 percent biotite. No other rocks are exposed.

MINERALIZATION AND ALTERATION

One small prospect pit on P.O.D. 2 (see map) exposes two parallel veinlets of quartz and tetrahedrite, one about 2 inches and the other 1 inch in thickness. Minor traces of disseminated pyrite are present on P.O.D. 11 and 13. In several places the quartz diorite, in particular, is lightly chloritized and contains late crystalline epidote in fracture surfaces.

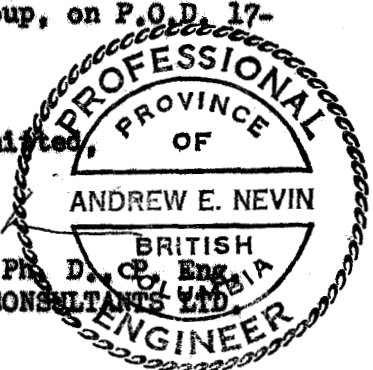
CONCLUSIONS

The ground along the west edge of the claim group, on P.O.D. 17-20, 23-24, is overburden-covered and as yet untested.

Respectfully submitted,

A. E. Nevin

Andrew E. Nevin, Ph. D., C. Eng.
ANDREW E. NEVIN CONSULTANTS LTD.

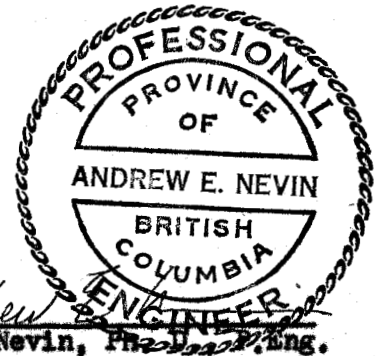


May 10, 1972

DECLARATION OF COSTS

I hereby declare that the following accurately represents the cost of geologic mapping performed on the P.O.D. group August 1-2, 6-7, 1971: *(One party Andrew E. Nevin, for 4 days) AEM.*

Travel expenses	\$ 60.80
Rental vehicle	27.33
Typing, drafting	20.05
Fees	<u>500.00</u>
Total	<u>\$608.18</u>



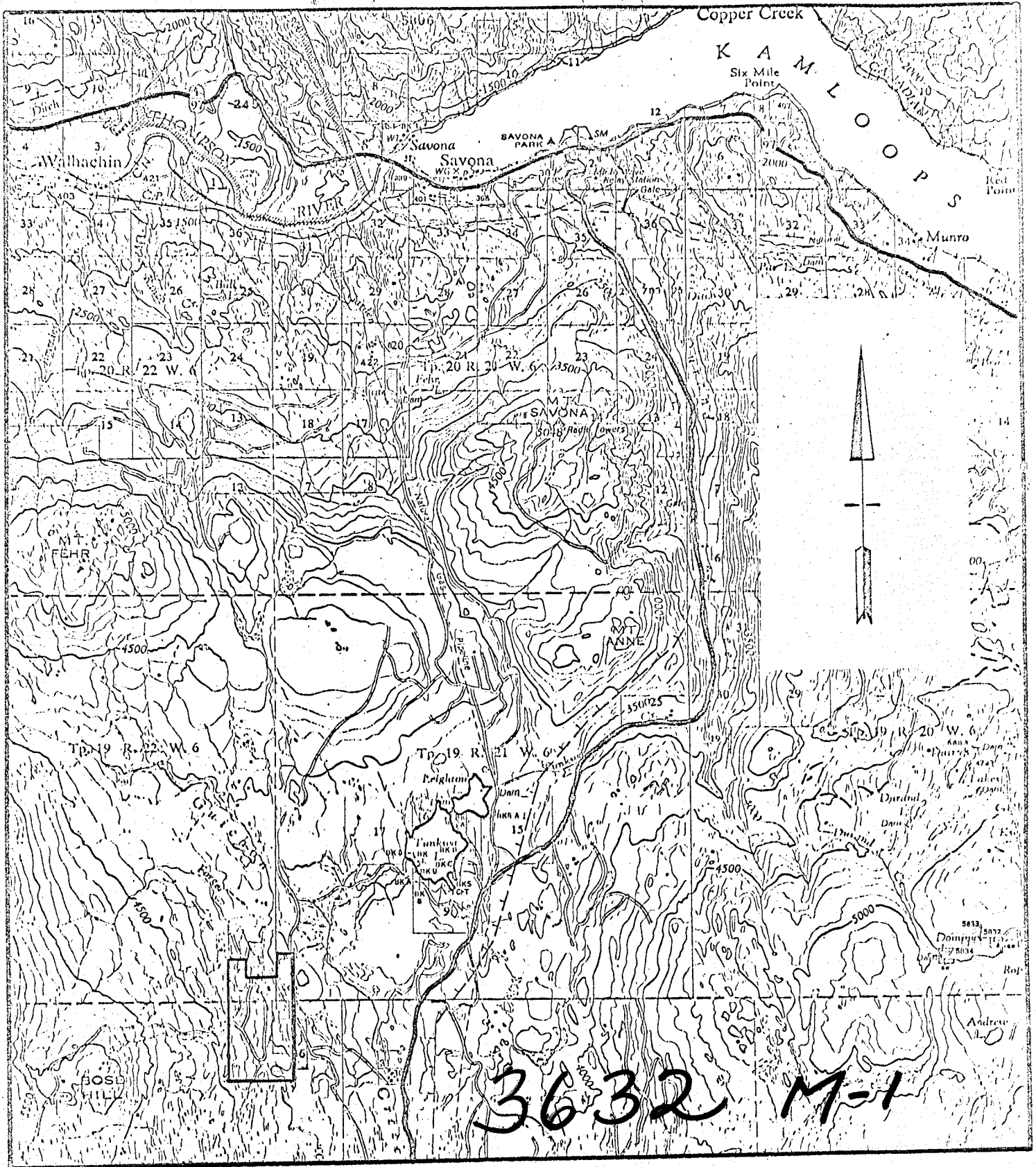
1972
May 10, ~~1971~~ *AEM.*

Declared before me at the *city*
of *Vancouver*, in the
Province of British Columbia, this *12*
day of *May* 1972, A.D.

Andrew E. Nevin

Jean Turner
A Commissioner for taking Affidavits within British Columbia or
A Notary Public in and for the Province of British Columbia.

Web-mining Records



N.T.S. 92110

Scale: 1" = 2 miles

LOCATION MAP
POD CLAIMS

Kamloops M.D.

April, 1972

AGM

Department of
 Mines and Petroleum Resources
 ASSESSMENT REPORT
 NO. 3632 MAP #2



LEGEND
 □ glacial gravel, outwash, cover
 ■ dolomite and quartz dolomite

To accompany geological report by
 Andrew E. Nevin, Ph.D., P. Eng., on
 POD group, Tankwa L. Area, ~~Highland Valley~~
 Mining Division, dated ~~1971~~

Andrew E. Nevin

DUSTY MAC MINES LTD. (N.P.)
 POD CLAIMS
 HIGHLAND VALLEY, B. C.



AG. NEVIN 1971
 SCALE 0 400 800 1200 FEET

M-2 3632