

92I/7W

LINE CUTTING REPORT

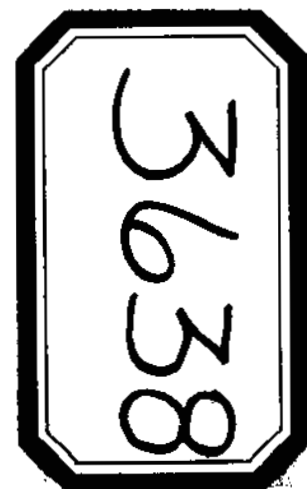
CLAIMS: ACB, PRICE

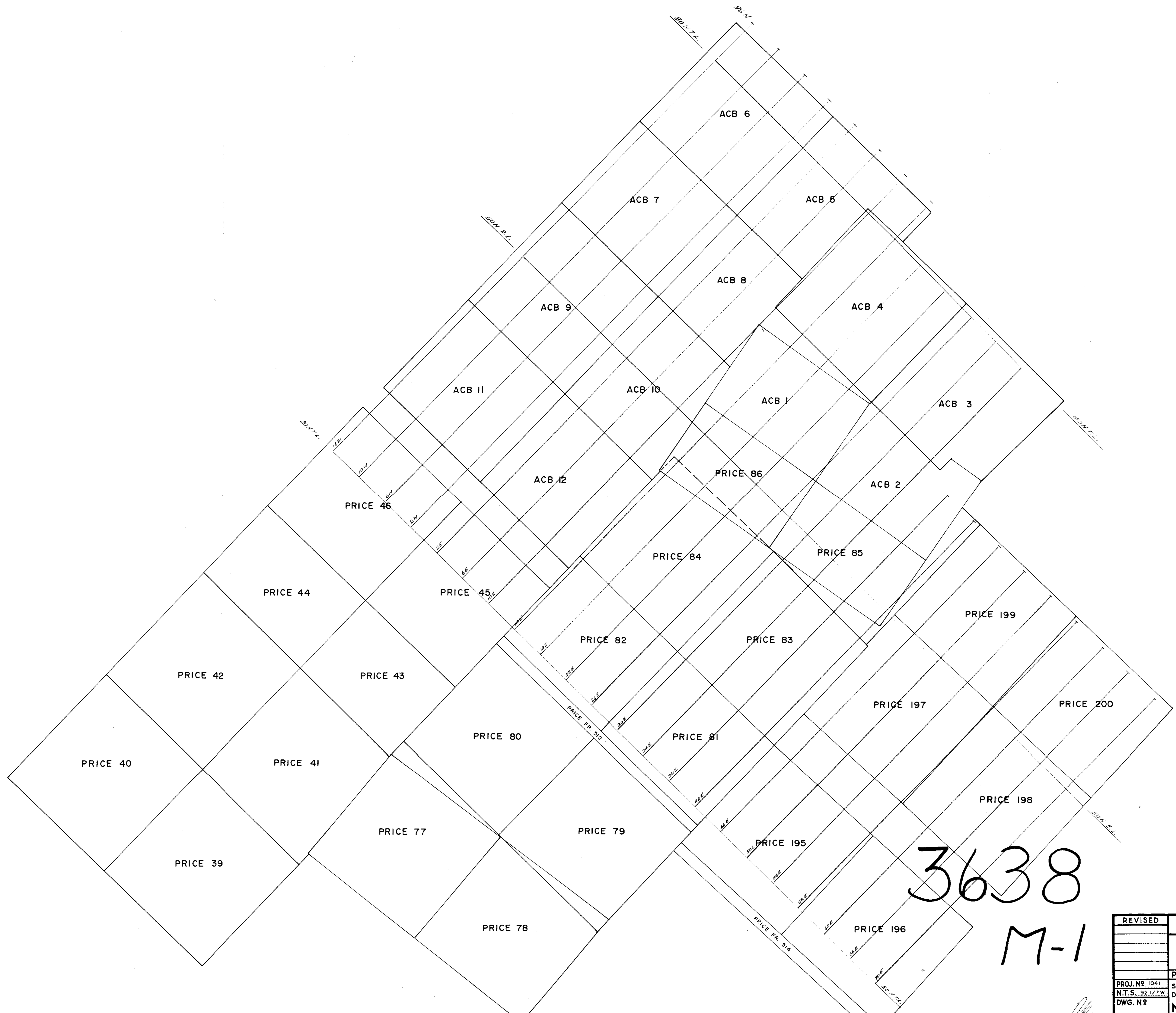
OWNER: NORANDA EXPLORATION COMPANY, LIMITED
(NON-PERSONAL LIABILITY)

MINING DIVISION: NICOLA

WORK DONE: APRIL 23 - MAY 2, 1972

RETURN TO
DEPARTMENT OF MINES AND PETROLEUM RESOURCES
VICTORIA, BRITISH COLUMBIA

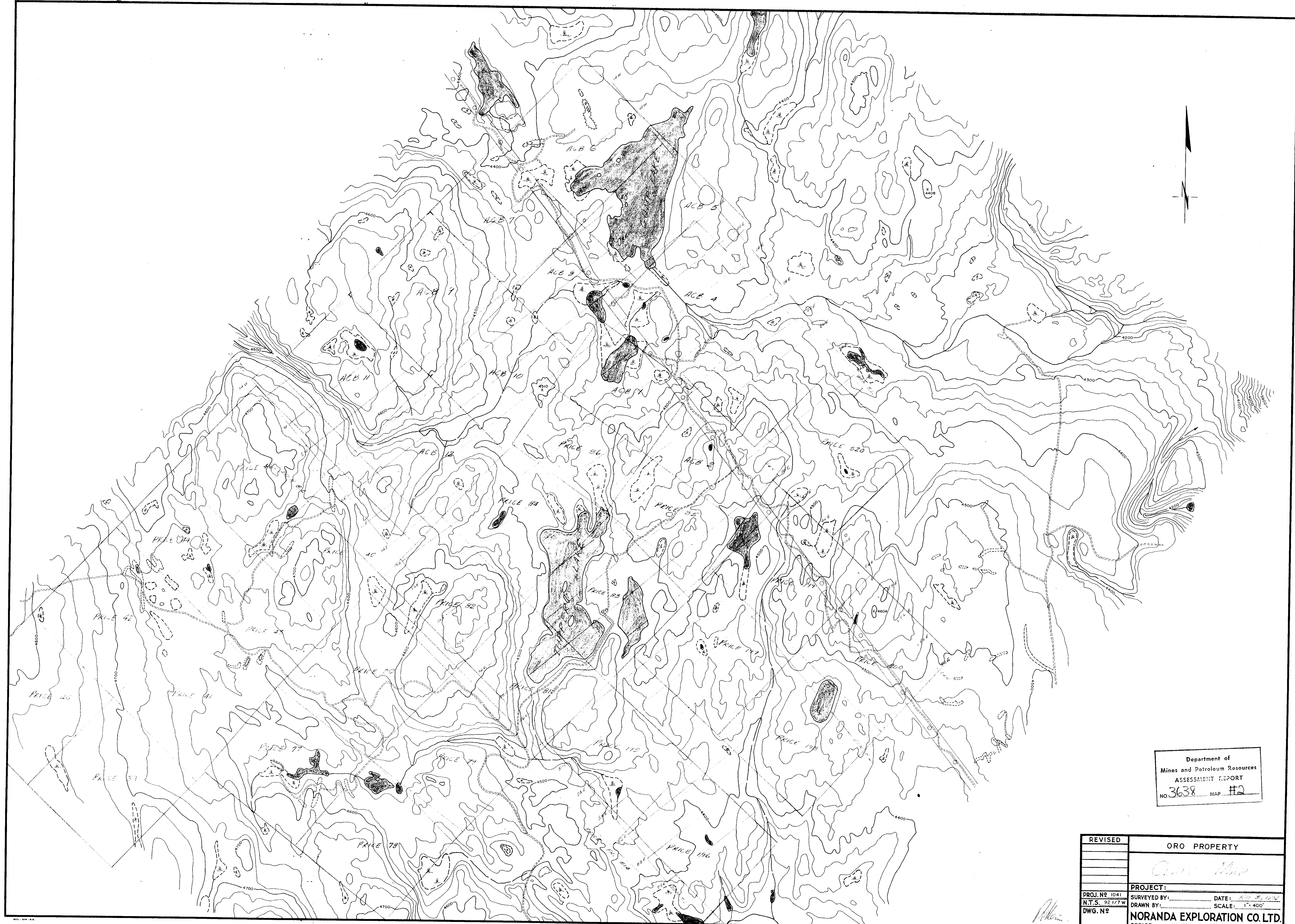




Department of
Mines and Petroleum Resources
ASSESSMENT REPORT
NO. 3638 MAP #1

3638
M-1

| | | |
|-----------------|------------------------------|------------------|
| REVISED | ORO PROPERTY | |
| | Claim Map | |
| | PROJECT: | |
| PROJ. NO. 1041 | SURVEYED BY: | DATE: |
| N.T.S. 92/17/76 | DRAWN BY: | SCALE: 1" = 400' |
| DWG. NO. | NORANDA EXPLORATION CO. LTD. | |
| | OFFICE: VANCOUVER | |



Department of
Mines and Petroleum Resources
ASSESSMENT REPORT
NO. 3638 MAP #2

| | | |
|----------------|------------------------------|------------------|
| REVISED | ORO PROPERTY | |
| | <i>Cross Map</i> | |
| PROJECT: | | |
| PROJ. No 1041 | SURVEYED BY: | DATE: 2003/12/22 |
| N.T.S. 32117.W | DRAWN BY: | SCALE: 1" = 400' |
| DWG. No | NORANDA EXPLORATION CO. LTD. | |
| | OFFICE: VANCOUVER | |

Alman