

92I/15E

LINE CUTTING REPORT

CLAIMS: GREENSTONE

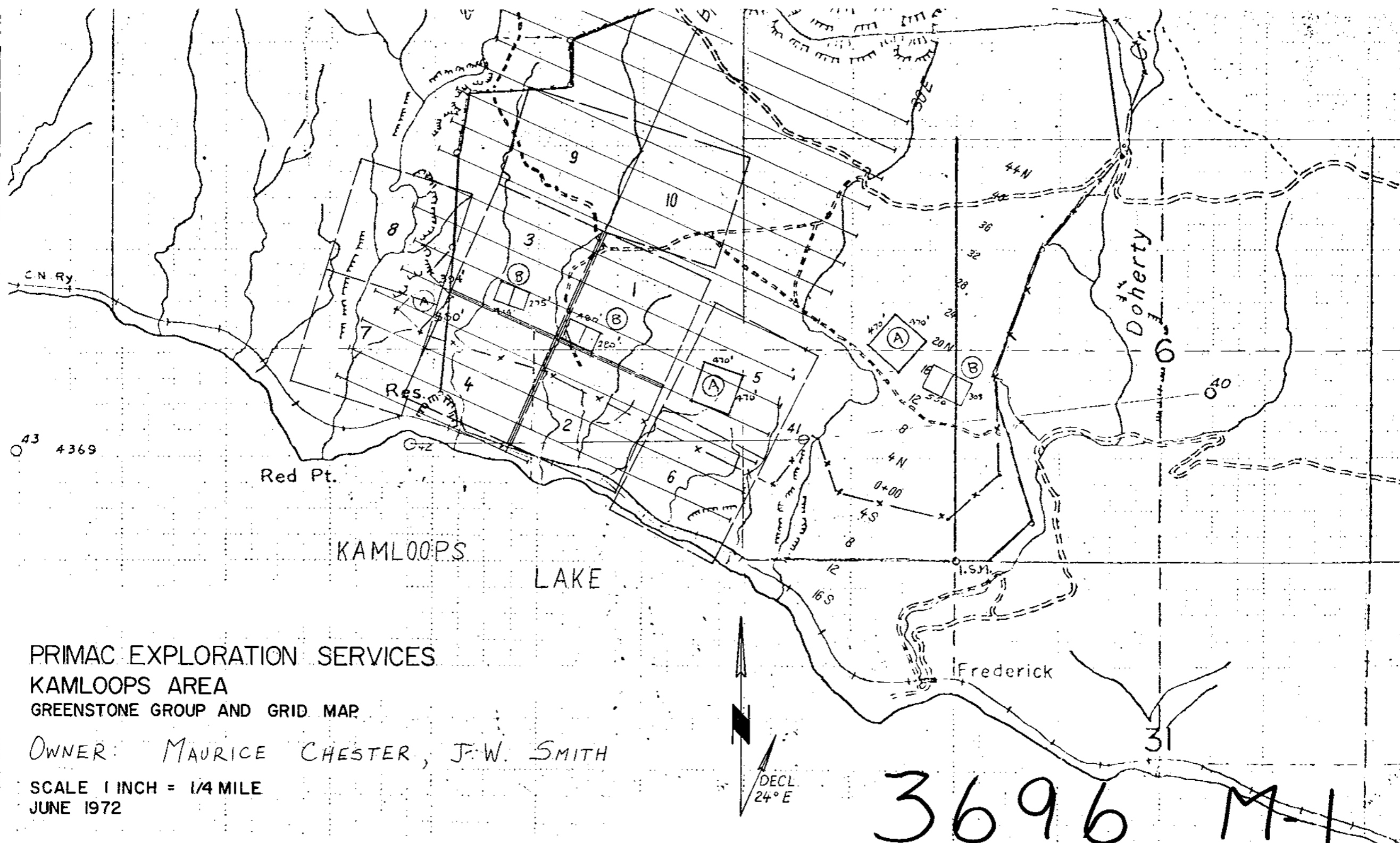
OWNER: MAURICE CHESTER, J. W. SMITH

WORK DONE: April 15-26/72

MINING DIVISION: KAMLOOPS

RETURN TO
DEPARTMENT OF MINES AND PETROLEUM RESOURCES
VICTORIA, BRITISH COLUMBIA

3696



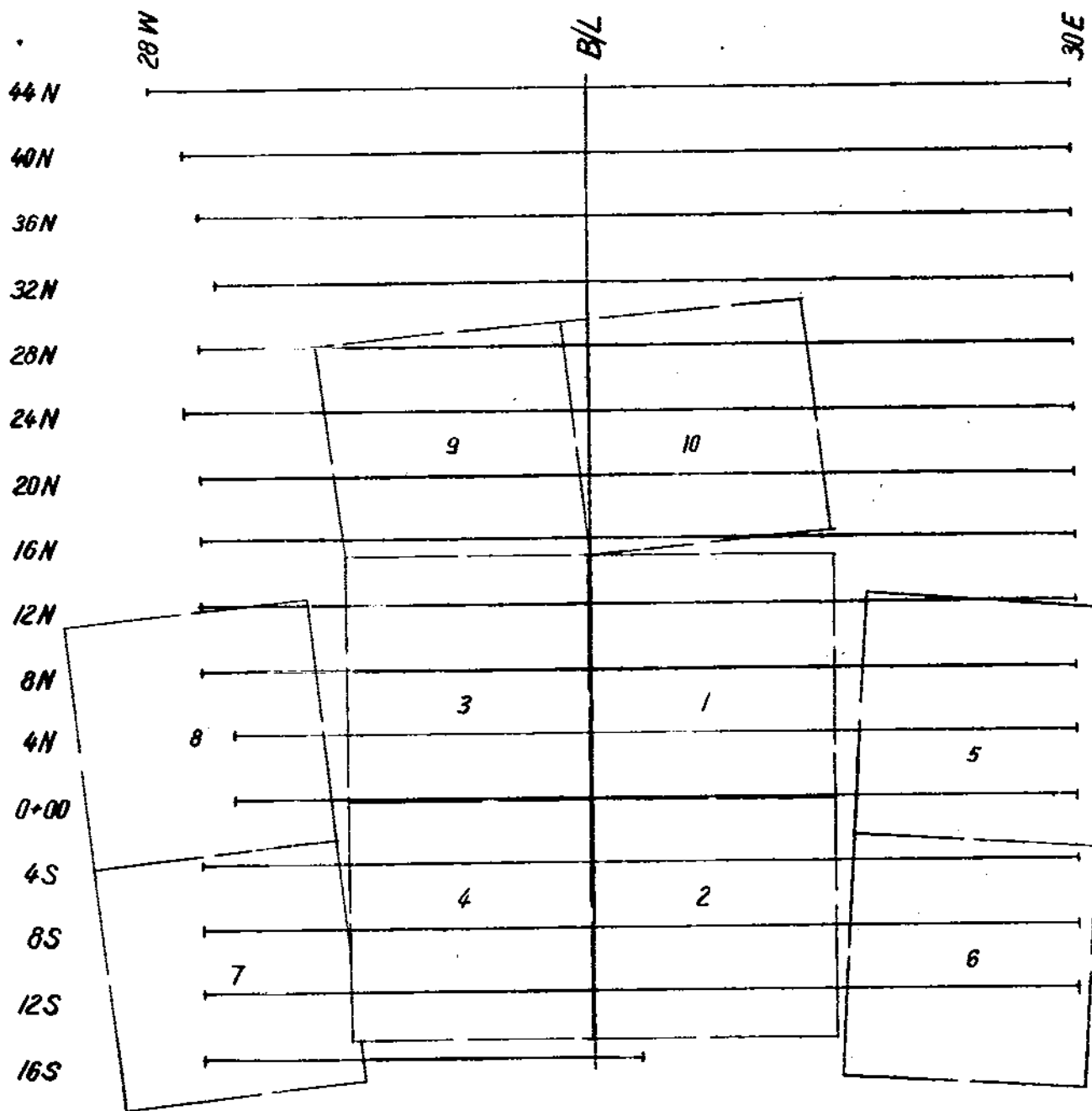
PRIMAC EXPLORATION SERVICES
 KAMLOOPS AREA
 GREENSTONE GROUP AND GRID MAP

OWNER: MAURICE CHESTER, J.W. SMITH

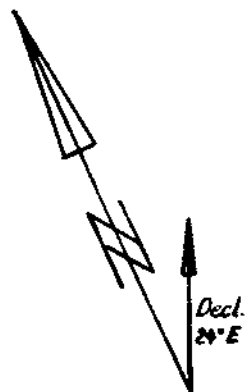
SCALE 1 INCH = 1/4 MILE
 JUNE 1972

3696 M-1

Department of
Mines and Petroleum Resources
ASSESSMENT REPORT
NO 3696 MAP #1



3696 M-2



GREENSTONE GROUP

BY PRIMAC EXPLORATION SERVICES

SCALE: 1" = 1000'

Department of
Mines and Petroleum Resources

ASSESSMENT REPORT

NO. 3696 MAP #2