

3712

REPORT ON

GEOPHYSICAL SURVEY

ON

LISA, AD MINERAL CLAIMS

KUMP LAKE

39° N, 120° W

SIMILKAMEEN MINING DIVISION

FOR

MONTEGO RESOURCES LTD. (N.P.L.)

April - May 1972

NTS 92 H / 10E

June 8, 1972

M.P. Stadnyk, B.Sc.

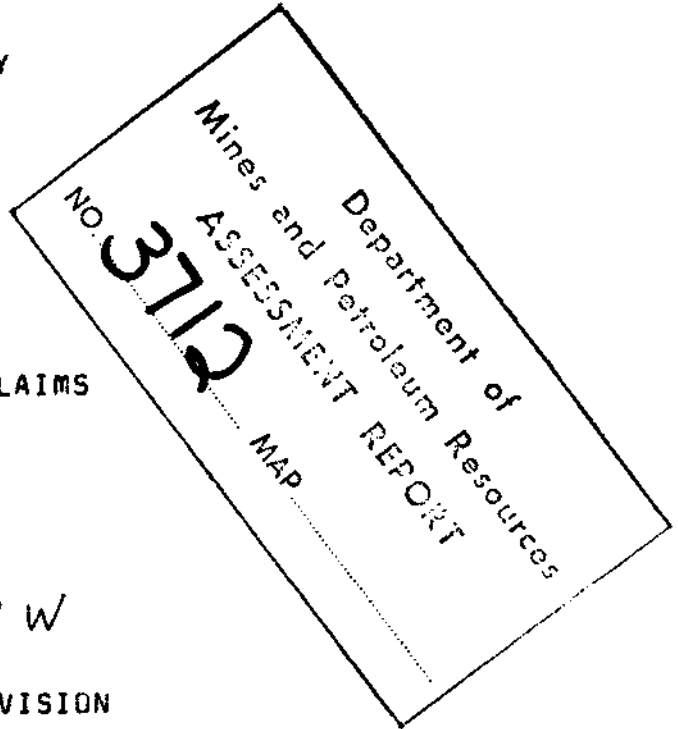


TABLE OF CONTENTS

	Page
INTRODUCTION.....	1
LOCATION AND ACCESS.....	1
MINERAL CLAIMS.....	2
HISTORY.....	2
GRID.....	2
GEOPHYSICAL SURVEY.....	2
Magnetometer Survey.....	2
Field Procedures.....	3
Corrections.....	3
KUMP LAKE.....	3
GEOPHYSICAL INTERPRETATION.....	3
PERSONNEL.....	4
EQUIPMENT.....	4
ACCOMMODATION.....	5
SUMMARY.....	5
RECOMMENDATIONS.....	5
CERTIFICATION.....	6

MAPS

#1 Claim Map.....	1" = 2000'
#2 Magnetometer Survey: Contoured.....	1" = 400'
#3 Values.....	1" = 400'

REPORT ON GEOPHYSICAL SURVEY ON
LISA, AD MINERAL CLAIMS, KUMP LAKE
FOR MONTEGO RESOURCES LTD. (N.P.L.)

INTRODUCTION:

Montego Resources Ltd. (NPL) property comprises of sixty-two mineral claims situated twenty miles north of Princeton, B.C. at Kump Lake and Pike Mountain, in the Similkameen Mining Division.

The Lisa group was staked by R. MacBean in 1971, and the AD group by M.P. Stadnyk in 1972.

This report covers line cutting and magnetometer survey carried out by Stadnyk Exploration Services during April and May, 1972.

A geochemical survey will be conducted over the grid when snow no longer covers the ground.

LOCATION AND ACCESS:

Property is situated over Pike Mountain and north to Kump Lake, B.C. It is approximately twenty miles North - North West of Princeton, B.C. and approximately one mile west of the Princeton - Merritt Highway (Number 5).

Co-ordinates at the south east corner are:

39° 43' North Latitude

120° 38' West Longitude.

Road access is possible from No. 5 Highway at the Cardinal Ranch turn-off at Gladstone Lake, and then south for two miles along an old logging road to Kump Lake.

Elevations of the property range from 3700 feet above sea level at Kump Lake to over 4700 feet on the summit of Pike Mountain.

MINERAL CLAIMS:

<u>Claim</u>	<u>Locator</u>	<u>Record No.</u>	<u>Date Recorded</u>
LISA 1 - 20	Bob MacBean	33273 - 33292	May 19, 1971
LISA 26 - 45	Bob MacBean	33293 - 33312	May 19, 1971
AD 1 - 20	M.P. Stadnyk	35127 - 35146	Apr 17, 1972
AD 21 - 22	M.P. Stadnyk	35541 - 35542	May 19, 1972

HISTORY:

No evidence of field work was noted during this survey although one very old claim post was found on Pike Mountain.

GRID:

A grid suitable for soil sampling and magnetometer survey was cut out by a four man crew under the supervision of the author.

A total of 48 miles (253,200 feet) of line was cut out, as shown on the accompanying grid map.

The base line and tie lines were cut north while cross lines were cut east and west. The base line and the western tie lines were 8400 feet in length while the eastern tie lines were 7200 feet long. These lines were placed 3000 feet apart at the 00 N line, but did curve somewhat, especially at the south end of the grid.

Poor snow conditions and possible "magnetic pulls" on the compasses could explain these errors, as was also the case on some cross-lines.

The base line was well blazed marked and flagged at 200 foot intervals. Cross lines were 400 feet apart with blazed, flagged and marked stations at 100 foot intervals.

Steep icy terrain at the south end of the grid slowed line cutting considerably, as did highly unfavorable snow conditions later.

GEOPHYSICAL SURVEY:

Magnetometer Survey:

The magnetometer survey was conducted using a Sharpe model

MF 1 Fluxgate, Serial Number 30544, and a Scintrex model MF 1 Fluxgate Serial Number 904433. These instruments are identical in construction, differing only in age. They are self orientating, requiring only course levelling. Temperature compensations have been built into the instruments. Readings on the lowest scale can be read to 20 gammas and estimated to 5 gammas. Scales range from plus 100,000 to minus 100,000 gammas. A high latitude adjustment permits zeroing of instruments at any location. A battery check is also built into the metering circuit.

Field Procedures:

Fluxgates were zeroed for the property at a master station near 72 N, 30 E. Base stations were established at 400 foot intervals along the base and tie lines. Corrections were then applied to these stations using the master station for control.

Readings were taken at 200 foot intervals along base and tie lines, and at 100 foot intervals along all cross lines. Each traverse started and finished on an established base station. Elapsed time per traverse ranged from 40 to 100 minutes per loop depending on terrain and snow conditions.

Diurnal variation tolerance for any traverse was less than one gamma per minute elapsed time and actual variation for most loops was 1/4 to 1/2 gamma per station.

Corrections:

Compensations built into the instruments eliminate any need for temperature correction being applied to field readings. Diurnal corrections were applied to all readings between the initial and final base stations of each traverse. This variation is assumed to be linear and the correction for any one reading in a traverse is the diurnal variation multiplied by the ratio: time elapsed when reading taken, divided by, total time elapsed in the loop.

KUMP LAKE

GEOPHYSICAL INTERPRETATION:

Calibration of the Fluxgate magnetometer at the master station for the survey was set at 320 gammas. The highest and lowest corrected readings during the survey were 6100

and -650 gammas respectively. Background from inspection of plotted and contoured data is 300-400 gammas except at the southern portion of the grid where it increases to 600 - 800 gammas.

Two large high anomalous zones were detected by this survey. The largest and greatest in aerial extent was over higher ground of Pike Mountain where outcrop was frequently seen (through the snow). A different rock type was also found here containing traces of sulphides. This anomaly should be closely examined by prospecting, geological mapping and geochemical survey. Magnetic intensity was sufficient here to affect the line cutters compasses (0 N - 32 E - 75 E to 24 N, 56 - 60 E).

A second anomalous zone was located west of the base line from 32 N to 68 N, 20 W - 30 W. Further geophysical work to the west should be conducted to check this area. Soil sampling and geological mapping should also be carried out.

A third, weak anomaly was located at the south end of the grid from BL to 24 E, 8 N and open south of 0 N. More geophysical surveying should be carried out to check the extent of this anomaly.

Only background readings were obtained from observed granodiorites south and west of Kump Lake.

PERSONNEL:

Line cutting and magnetometer survey was conducted under the supervision of M.P. Stadnyk (Geologist) from April 14 to May 16, 1972.

Line cutters were E. Warner, G. Budgell, W. Kastor, G. Webster, D. Corabine, H. Plange, B. Kennedy, N. Newsom and R. Hunter.

EQUIPMENT:

A 3/4 ton G.M.C. pickup was rented from Tilden Truck Rentals Ltd. of Vancouver, and a 3/4 ton 4x4 Ford pickup was rented from Stadnyk Exploration Services Ltd. to provide transportation on this property.

A ski-doo type vehicle was also tried out on the property but did not prove to be very suitable. This Cariboo was rented from Terrex Mining Services Ltd. of Princeton, B.C.

The magnetometers were rented from Stadnyk Exploration Services Ltd., and Agilis Exploration Services Ltd.

Other miscellaneous equipment was rented from Agilis Exploration Services Ltd.

ACCOMMODATION:

Accommodation was secured at the Sky Blue Lodge, some two miles south of the property. The men did most of their own cooking.

SUMMARY:

A grid comprising of 48 miles of line was cut over the Lisa and AD mineral claim groups belonging to Montego Resources Ltd.

A magnetometer survey was then carried out over the grid. The survey located a number of high magnetic anomalies on the south and west portions of the property. No explanation can be given for these anomalies as snow covered most of the ground during the time of the survey, although a dark, heavy rock (possibly Copper Mountain Intrusive) containing disseminated pyrite was noted to the south-east of the grid.

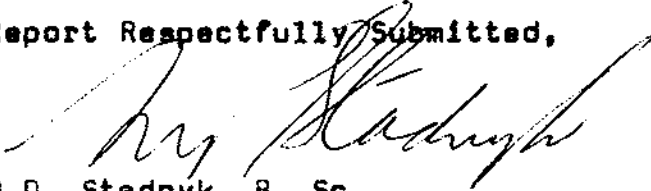
RECOMMENDATIONS:

Anomalies detected by the magnetometer survey should be checked out when the ground is clear of snow.

The grid should also be soil sampled and geologically mapped.

If geochemical anomalies correspond with the magnetic high anomalies, then the grid should be continued to the south and west and further surveys carried out before drilling is considered.

Report Respectfully Submitted,


M.P. Stadnyk, B. Sc.
Geologist,
Stadnyk Exploration Services Ltd.

June 8, 1972

North Delta, B.C.

CERTIFICATION

I, Mike Peter Stadnyk, of North Delta, B.C. do hereby certify that:

1. I am a Mining exploration geologist residing at 11629 Cory Drive, North Delta, B.C.
2. I am a graduate of the University of New Zealand and have practised my profession in Canada for the past eleven years.
3. I am an Associate Member of the Geological Association of Canada.
4. Information contained in this report is based upon work carried out by me, or at my direction between the period of April 14 and May 16, 1972.

June 8, 1972
North Delta, B.C.



M.P. Stadnyk, B.Sc.
Geologist.

AD
GROUP

LISA 9	LISA 7	LISA 5	LISA 3	LISA 1					
LISA 10	LISA 8	LISA 6	LISA 4	LISA 2	AD 1	AD 2	AD 12	AD 11	
LISA 12	LISA 14	LISA 16	LISA 18	LISA 20	AD 3	AD 4	AD 14	AD 13	
LISA 11	LISA 13	LISA 15	LISA 17	LISA 19	AD 5	AD 6	AD 16	AD 15	
LISA 34	LISA 32	LISA 30	LISA 28	LISA 26	AD 7	AD 8	AD 18	AD 17	
LISA 35	LISA 33	LISA 31	LISA 29	LISA 27	AD 9	AD 10	AD 20	AD 19	
LISA 36	LISA 38	LISA 40	LISA 42	LISA 44			AD 22	AD 21	
LISA 37	LISA 39	LISA 41	LISA 43	LISA 45					

LISA
GROUP



Princeton
approx. 20mi

3712 M-1

MONTEGO RESOURCES LTD. (NPL)
 KUMP LAKE AREA, B.C.
 SIMILKAMEEN MINING DIVISION
 AD & LISA CLAIMS

SCALE — 1" = 2000 FT.

2112

Department of
Mines and Petroleum Resources
ASSESSMENT REPORT
NO. 3712 MAP #1

DOMINION OF CANADA:
PROVINCE OF BRITISH COLUMBIA:

To Wit:

In the Matter of the Line Cutting and Geophysical Survey on the Kump Lake, Similkameen Mining Division.

LISA 1 - 20, 26 - 45, AD 1 - 22.

I, M.P. Stadnyk
11625 Cory Drive,
North Delta, B.C.
of

in the Province of British Columbia, do solemnly declare that the following personnel were employed and costs incurred in conducting the work.

Personnel:

E. Warner	- April 14,-23/72	10 days @ \$53./day	\$ 530.00
G. Budgeell	- April 14 -23, May 9-12/72,	14 days @ \$38.00/day	432.00
W. Kastor	- Apr. 20-21/72	2 days @ \$60./day	120.00
G. Webster	- Apr. 20-21/72	2 days @ \$60./day	120.00
O. Corbine	- May 5-8/72	4 days @ \$30./day	120.00
H. Planje	- May 5-8/72	4 days @ \$30./day	120.00
B. Kennedy	- May 1-13/72	13 days @ \$38./day	494.00
N. Newsom	- May 1-15/72	15 days @ \$45./day	675.00
R. Hunter	- May 3-4/72	2 days @ \$30./day	60.00
M.P. Stadnyk	- April 13-21, May 1-16	25 days @ \$100.00/day	<u>2,500.00</u>
			\$5,171.00

Disbursements:

Transportation & Gas	\$ 850.00
Camp Charges-90 man days @ \$10.	900.00
Magnetometer Rental	400.00
Ski-Doo Rental	135.00
Report - 3 days @ \$100.	300.00
Drafting	180.00
Engineering Supplies	220.00
1st Aid Supplies	20.00
Typing	25.00
Stationery	<u>30.00</u>
Total	<u>3,060.00</u>
	<u>\$8,231.00</u>

And I make this solemn declaration conscientiously believing it to be true, and knowing that it is of

the same force and effect as if made under oath and by virtue of the "Canada Evidence Act."

Declared before me at the *City*
of *Vancouver*, in the
Province of British Columbia, this *29*
day of *June*, 19*72*, A.D.

A. Jarratta
A Commissioner for taking Affidavits for British Columbia or
A Notary Public in and for the Province of British Columbia.

In the Matter of

.....

.....

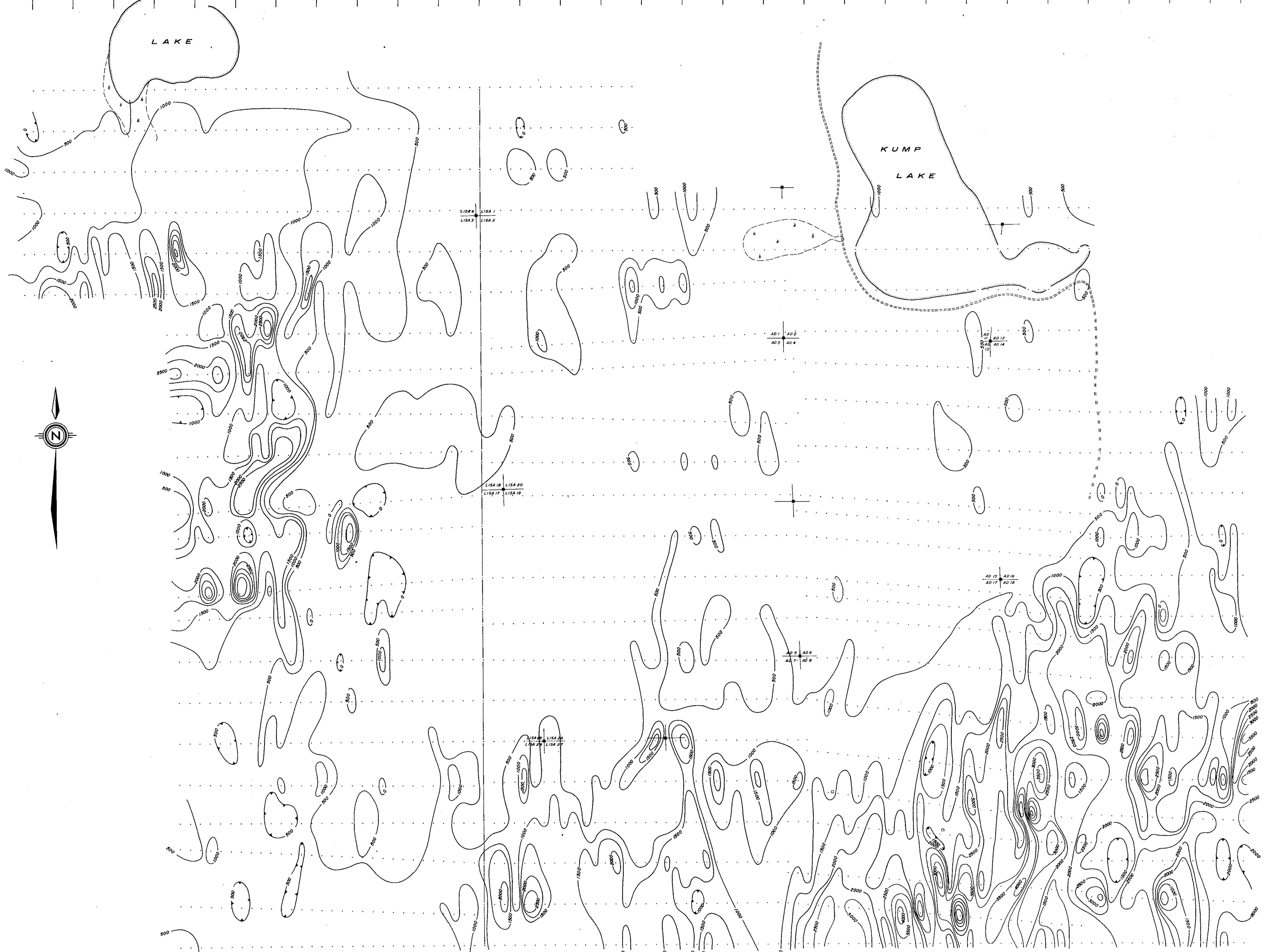
.....

.....

Statutory Declaration
(CANADA EVIDENCE ACT)

44W 40W 36W 32W 28W 24W 20W 16W 12W 8W 4W 0 4E 8E 12E 16E 20E 24E 28E 32E 36E 40E 44E 48E 52E 56E 60E 64E 68E 72E 75E

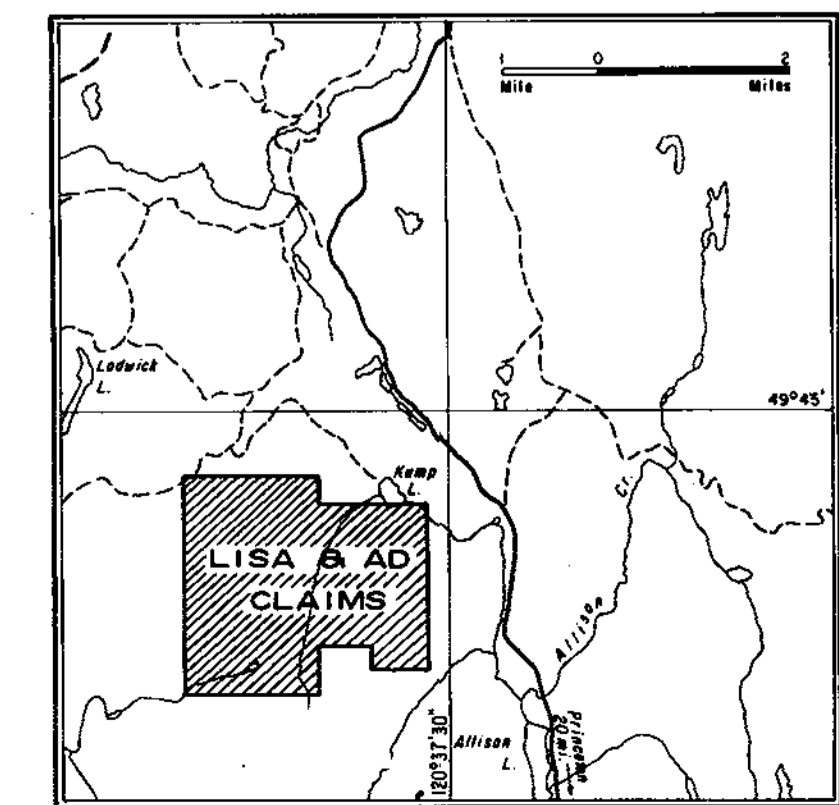
84N
80N
76N
72N
68N
64N
60N
56N
52N
48N
44N
40N
36N
32N
28N
24N
20N
16N
12N
8N
4N
0



3712 M-2

Department of
Mines and Petroleum Resources
ASSESSMENT REPORT
NO. 3712 MAP #2

- LEGEND**
- Contour
 - Lake
 - Swamp
 - Road
 - Survey station
 - Claim post

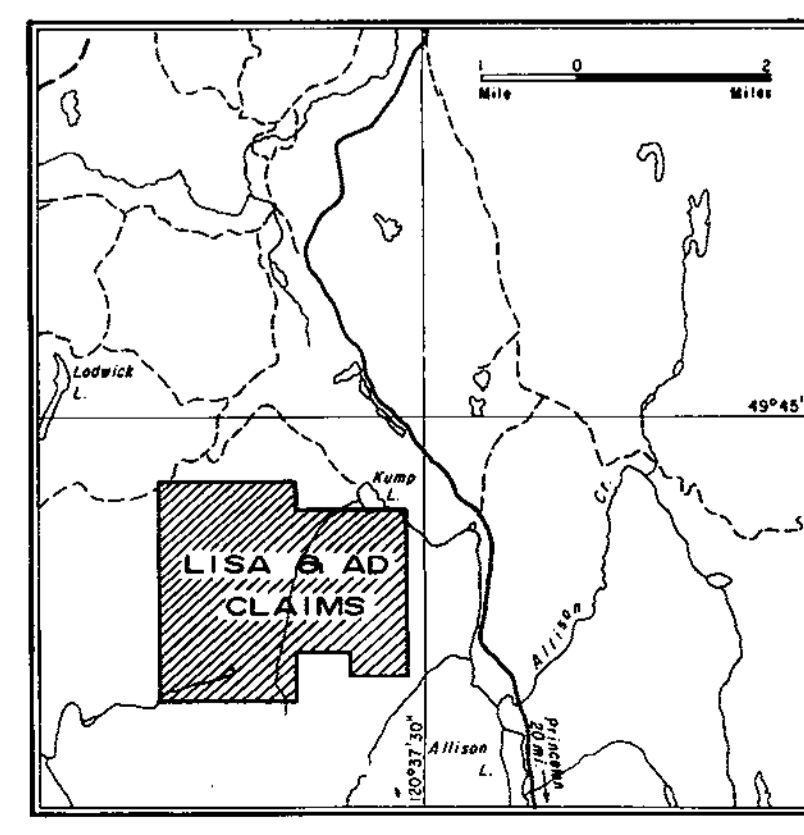
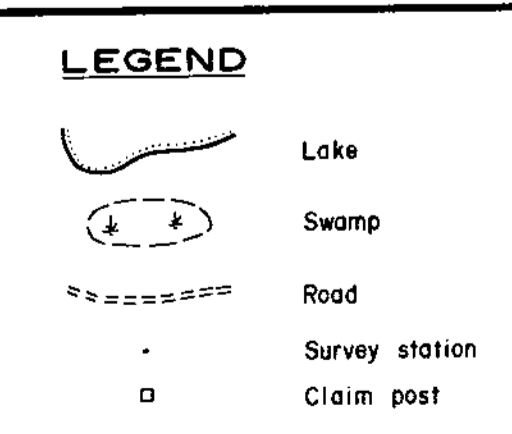
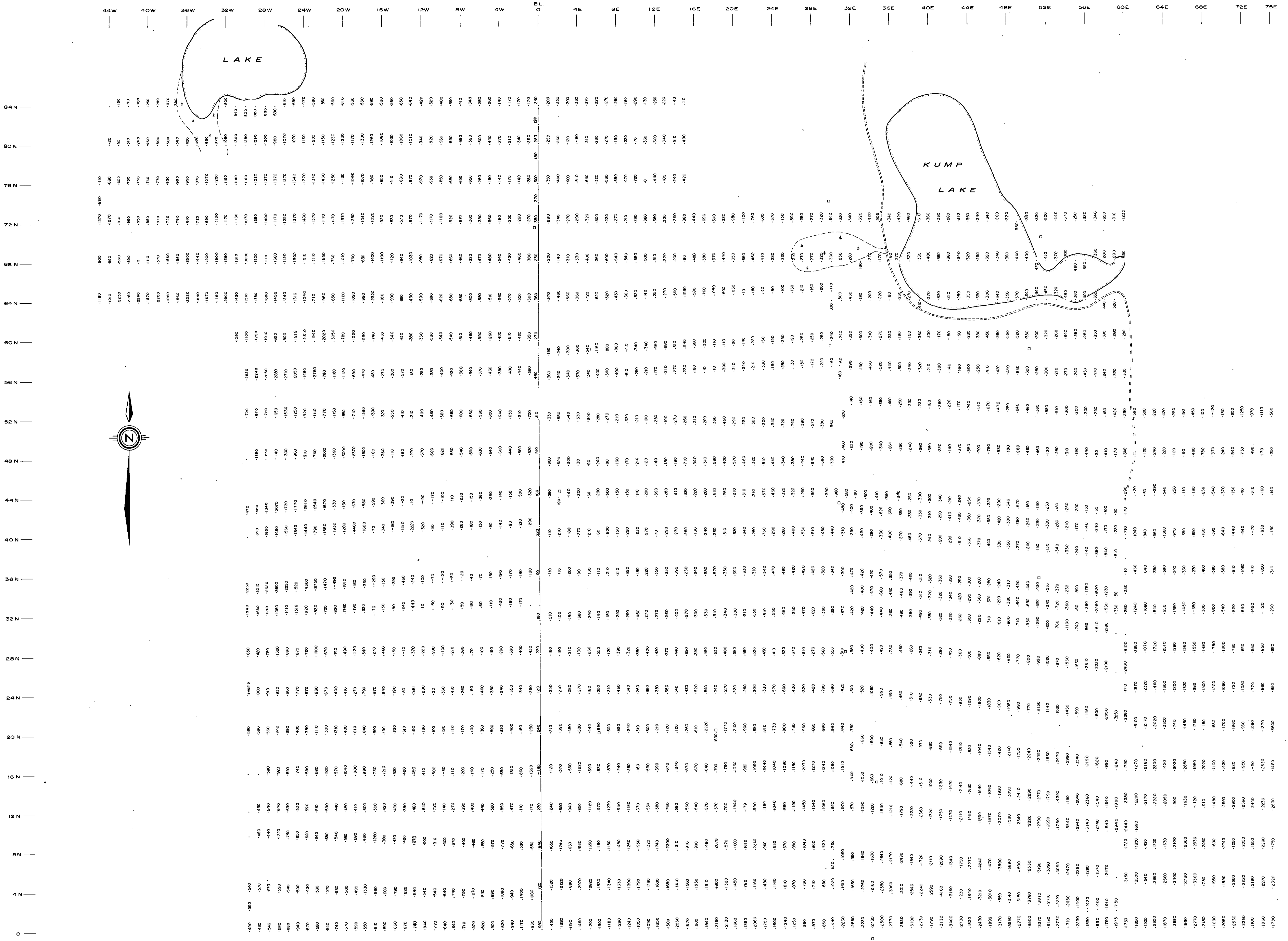


AGILIS EXPLORATION SERVICES LTD.
MONTEGO RESOURCES LTD. (NPL)
AD & LISA CLAIMS
KUMP LAKE AREA, B.C.
SIMILKAMEEN MINING DIVISION

**MAGNETOMETER
SURVEY**

Contour Interval - 500 Gamma
400 200 0 400 800 1200
FEET FEET

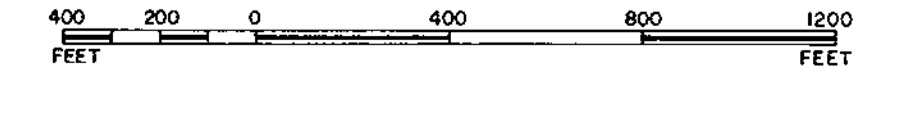
M. J. Macdonald
MAY, 1972



Department of
Mines and Petroleum Resources
ASSESSMENT REPORT
NO 3712 - MAP #3

AGILIS EXPLORATION SERVICES LTD.
MONTEGO RESOURCES LTD. (NPL)
AD & LISA CLAIMS
KUMP LAKE AREA, B.C.
SIMILKAMEEN MINING DIVISION

MAGNETOMETER SURVEY
Values in Gamma



M. H. H. H.