

RETURN TO  
DEPARTMENT OF MINES AND PETROLEUM RESOURCES  
VICTORIA, BRITISH COLUMBIA

LINE CUTTING-CONTROL SURVEY-TOPOGRAPHIC REPORT

LIARD MINING DIVISION

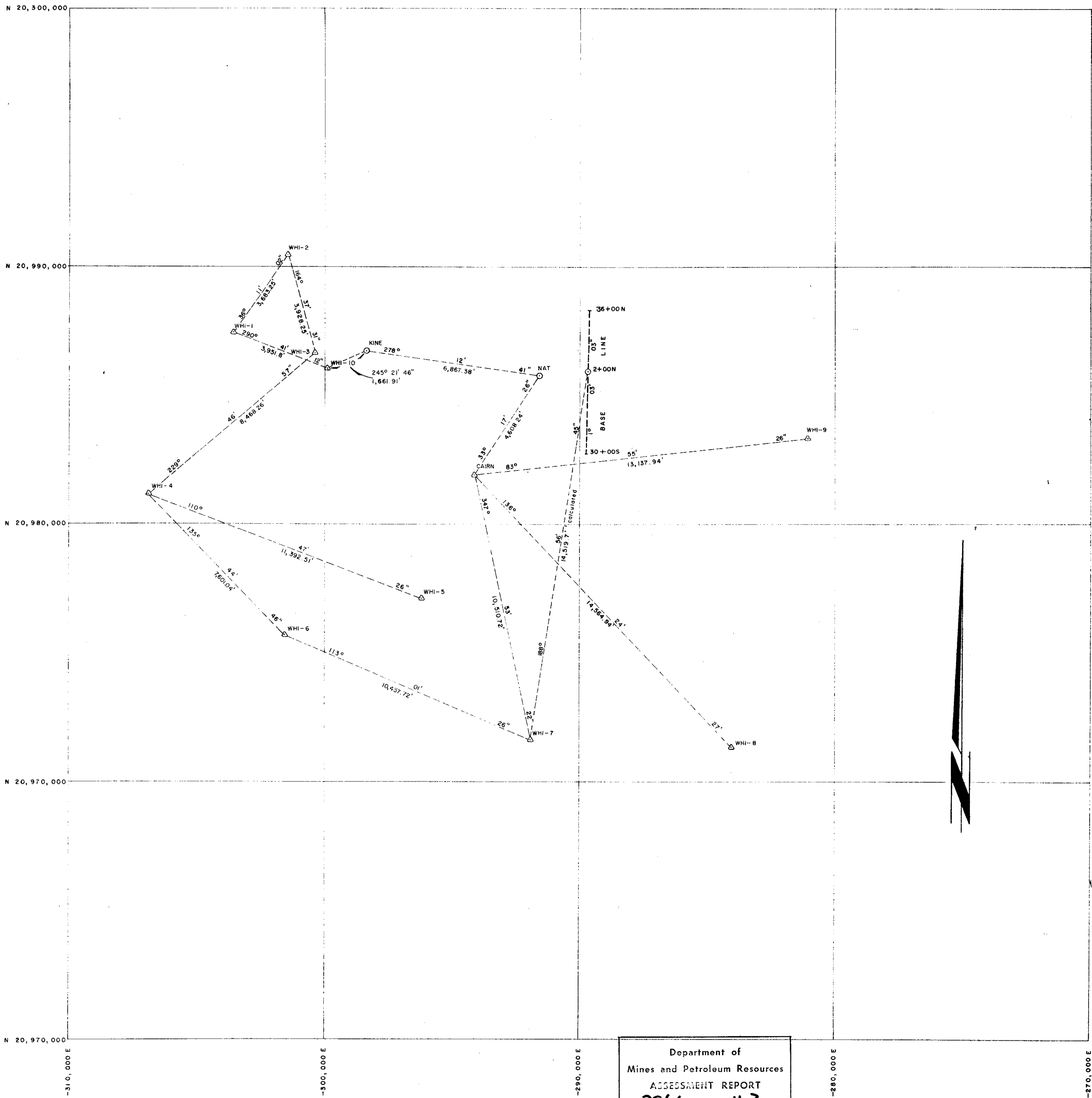
SPECTRUM, OWL CLAIMS

OWNER: IMPERIAL OIL LIMITED

WORK DONE: July 13-Sept. 30/72

104G/9W, 10E





Department of  
Mines and Petroleum Resources  
ASSESSMENT REPORT  
NO. **3866** MAP # **3**

CO-ORDINATE TABLE

STATION	NORTHINGS (Feet)	EASTINGS (Feet)	ELEVATIONS (Feet)
NAT	20,985,764.39	-291,583.45	5,821.0
KINE	20,986,744.98	-298,378.77	6,768.0
IO	20,986,052.2	-299,889.4	6,698.3
1	20,987,448.2	-303,586.4	6,349.3
2	20,990,421.0	-301,411.9	4,863.7
3	20,986,633.4	-300,370.4	6,672.3
4	20,981,165.5	-306,836.7	5,793.3
5	20,977,121.7	-296,186.1	3,743.8
6	20,975,721.2	-301,532.4	5,632.1
7	20,971,631.0	-291,907.7	5,394.5
8	20,971,359.0	-284,070.0	3,035.6
9	20,983,298.5	-281,048.8	2,718.5
CAIRN	20,981,907.8	-294,112.9	5,983.3
B/L2+00N	20,985,974.1	-289,649.8	

PLAN SHOWING CONTROL SURVEY FOR  
**IMPERIAL OIL LTD.**  
SPECTRUM PROPERTY, B.C., MAP SHEET 104-G

SCALE: 1" = 2000'

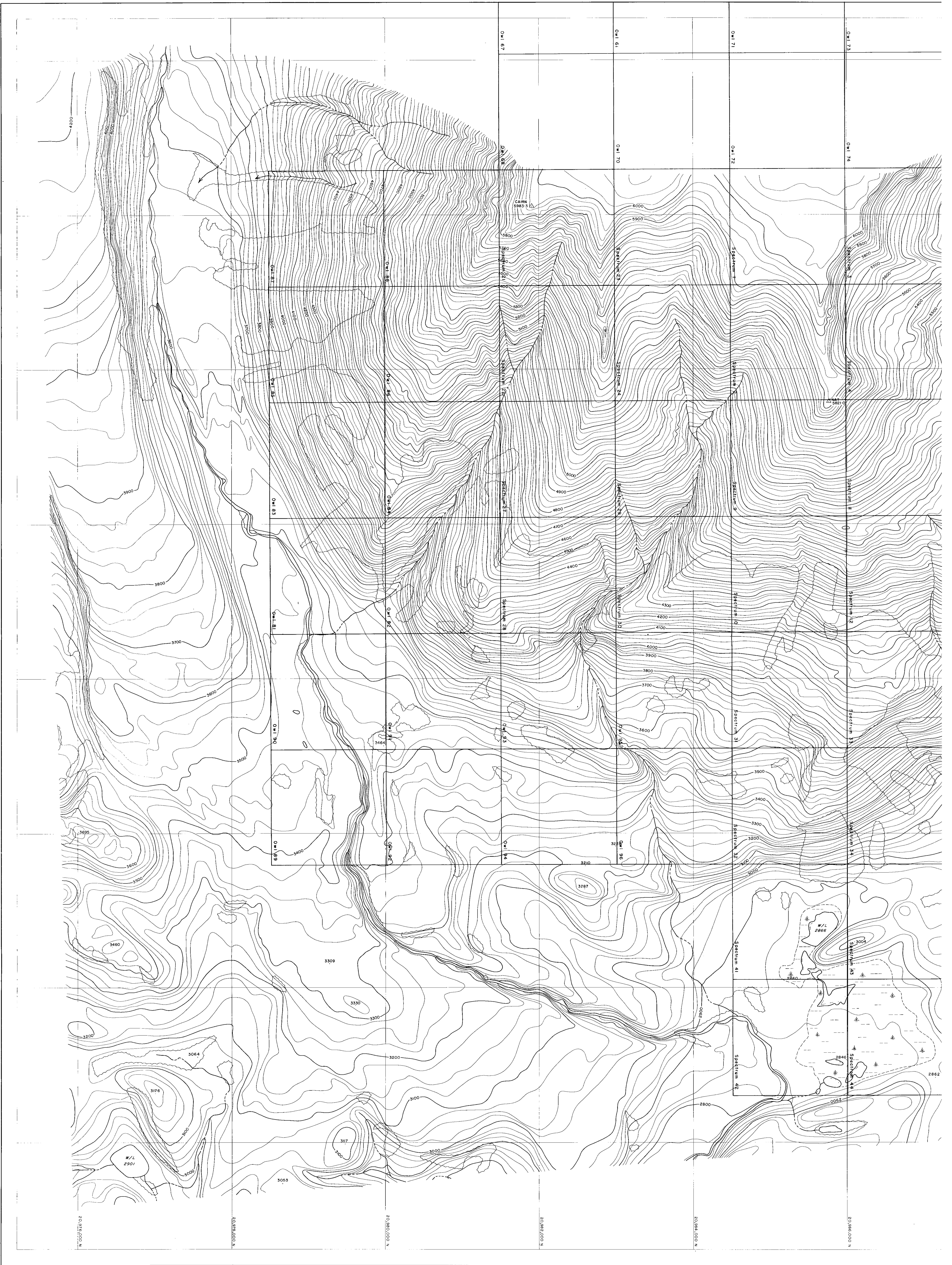
LEGEND

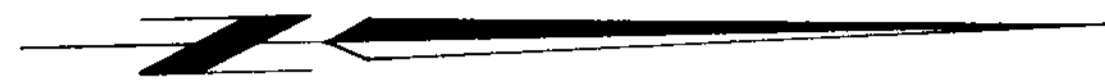
Government Control Stations ..... ○  
Control Survey Stations ..... △

Co-ordinates are local, based on the Territorial Plane Co-ordinate System, (Reference Meridian: 129° West of Longitude) and are derived from the given B.C. Government Co-ordinates of Station "KINE".  
Co-ordinates or distances have not been corrected for scale factor or curvature.  
Bearings are astronomic, derived from the bearing between B.C. Government Topographic Stations "Kine" and "Nat" and are referred to the 129° West Meridian of Longitude.  
Elevations are based on sea level datum and have been derived from the given B.C. Government elevation of Station "Kine".  
Elevations are derived from trigonometric levelling and have been corrected for curvature and refraction.  
Stations are monumented with a 4" x 4" x 4" wooden post erected over an iron bar surrounded with a stone mound.

3866 M-3




August, 1972  
WHITE, HOSFORD AND IMPEY LTD.  
P.O. Box 4418  
WHITEHORSE, Y.T.





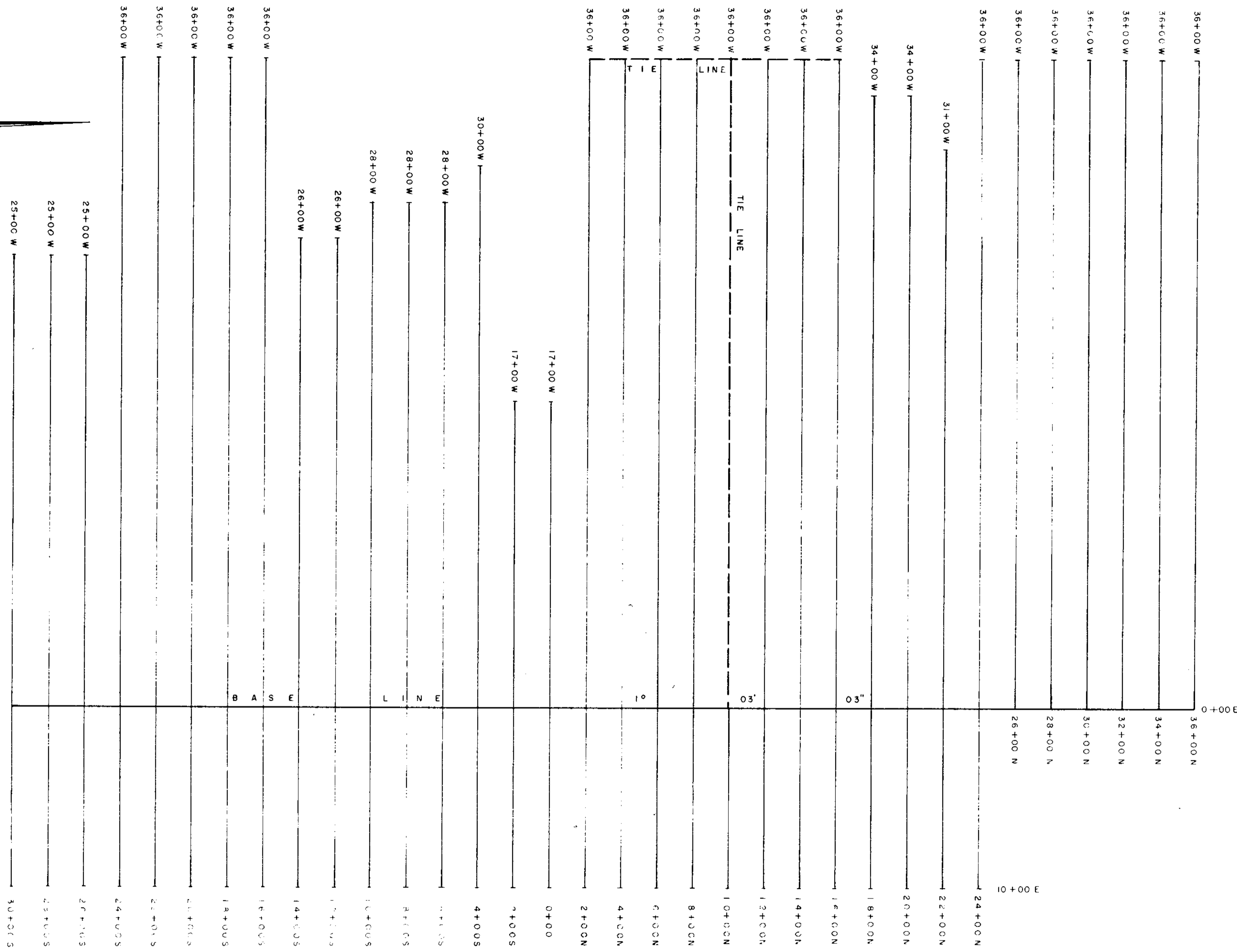
PLAN SHOWING  
 GEOPHYSICAL GRID FOR  
**IMPERIAL OIL LTD.**  
 SPECTRUM PROPERTY, B.C.  
 MAP SHEET 104-G

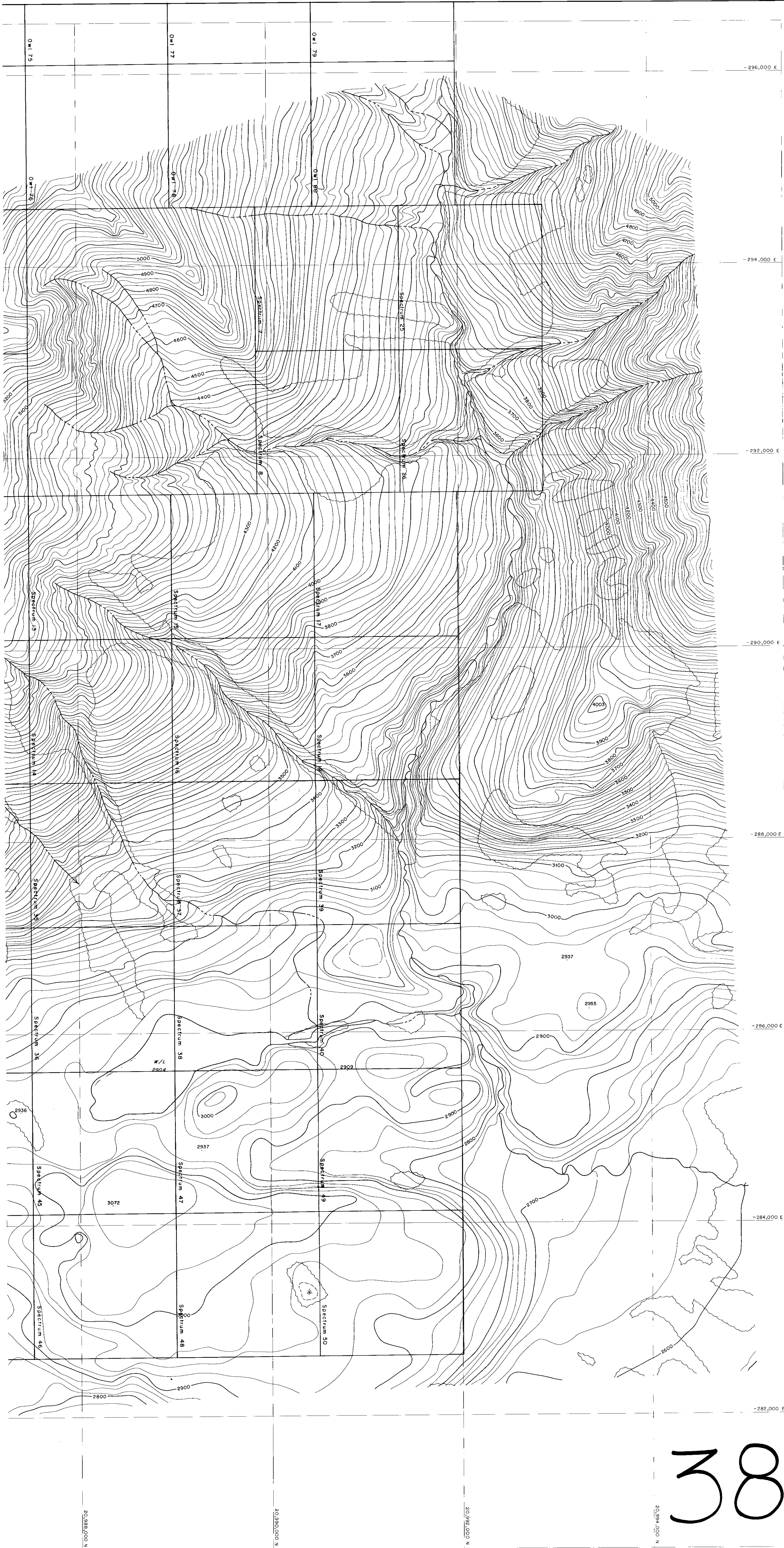
AUGUST 14, 1972  
 SCALE: 1" = 400'

LEGEND:  
 BASE LINE SHOWN THUS   
 TIE LINES SHOWN THUS   
 PICKET LINES SHOWN THUS 

Department of  
 Mines and Petroleum Resources  
 ASSESSMENT REPORT  
 No. **3866** MAP **#2**

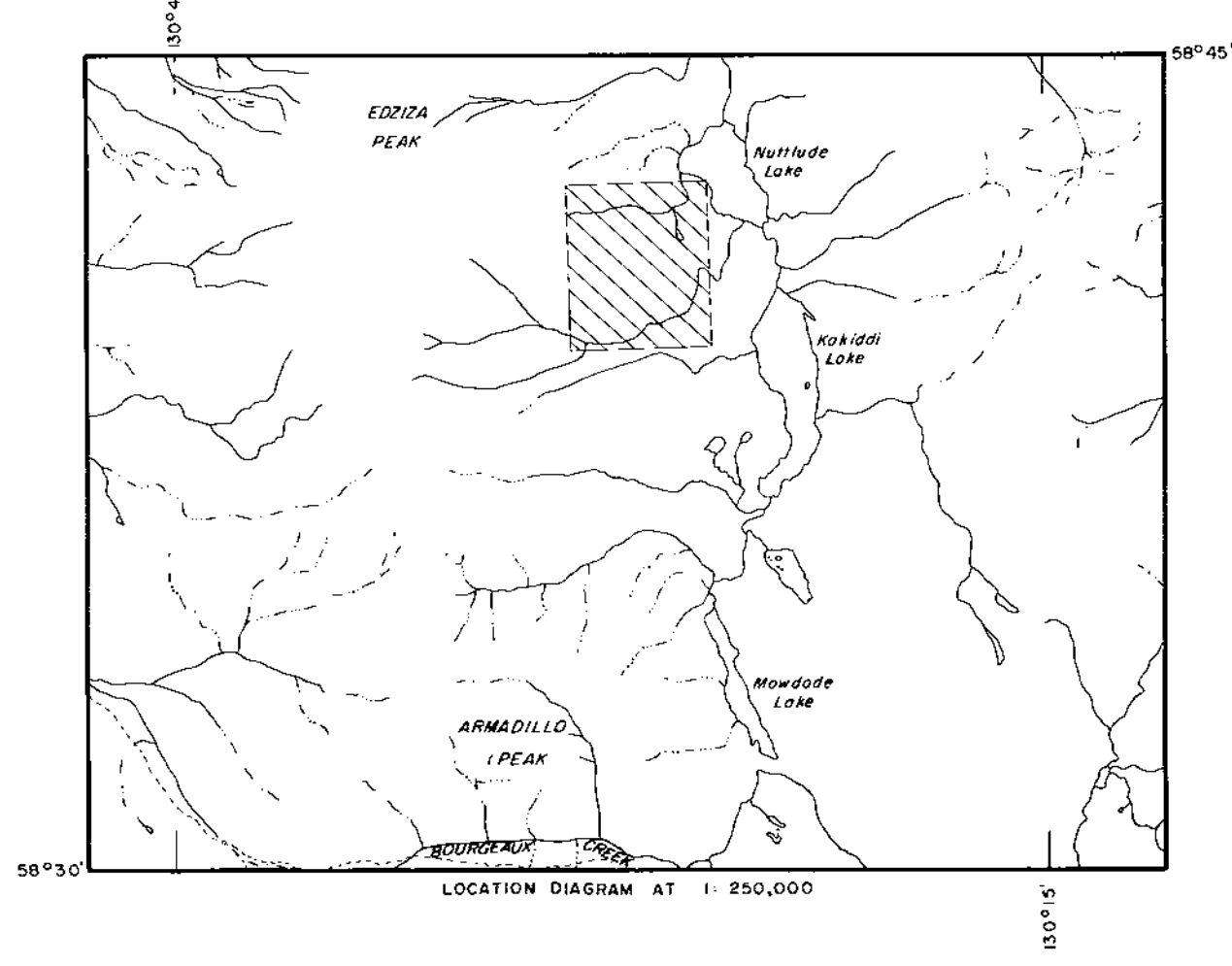
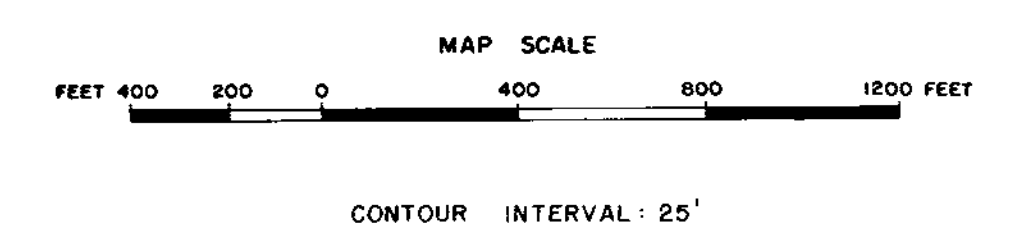
WHITE, HOSFORD AND IMPEY LTD.  
 P.O. BOX 4418  
 WHITEHORSE, Y.T.





# SPECTRUM PROPERTY

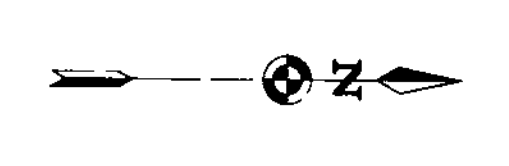
## BRITISH COLUMBIA



DATE OF MAPPING: OCT. 1972

**LEGEND**

Improved road	Stream
Secondary road	Intermittent stream
Track or trail	Ditch
Railway	Swamp
Fence	Horizontal control
Tree area	Drill hole
Out line	Spot elevation
Contours	



NOTE:-  
HORIZONTAL AND VERTICAL CONTROL SUPPLIED BY  
WHITE, HOSFORD & IMPEY LTD.

Department of  
Mines and Petroleum Resources  
ASSESSMENT REPORT  
NON 3866 MAP #1

Created by  
**NORTH WEST SURVEY CORP. LTD.**  
Company: Grand Falls, Vancouver, Whitehorse, Yukon  
FOR IMPERIAL OIL LIMITED

3866 M-1