

3868

94D/3W

GEOPHYSICAL AND LINECUTTING REPORT

ON THE

IN GROUP OF MINERAL CLAIMS

SQUINGULA RIVER AREA

FOR

CANADIAN SUPERIOR EXPLORATION LTD.

BY

JOHN F. BAKER B.Sc.

WILLIAM RAINBOTH, P. Eng.

PROPERTY NAME:

IN GROUP

LOCATION:

SQUINGULA RIVER AREA 56°15' N, 127°20'W  
OMINECA MINING DIVISION, B.C.

DATE STARTED:

AUGUST 24th, 1972

DATE COMPLETED:

SEPTEMBER 2, 1972

Department of	
Mines and Petroleum Resources	
ASSESSMENT REPORT	
NO. 3868	MAP.....

## TABLE OF CONTENTS

	Page
INTRODUCTION	1
CONCLUSIONS AND RECOMMENDATIONS	1
GENERAL GEOLOGY	2
MAGNETIC SURVEY	2
ECONOMIC CONSIDERATIONS	3

### Appendices:

- I. Assessment Details
- II. Labour Costs
- III. Cost Statement
- IV. Certificate - John F. Baker

## ILLUSTRATIONS

Plate No:	Page
#1 1. Location and Claim Map	
#2 2. Grid Location Map	
#3 3. Ground Magnetometer Survey	Back Cover Pocket

GEOPHYSICAL AND LINECUTTING REPORT  
ON THE  
IN GROUP OF MINERAL CLAIMS  
SQUINGULA RIVER AREA, B.C.

INTRODUCTION:

The III Group of 39 claims and fractions is located 16 miles NW of Bear Lake and 0-3 miles West of the Squingula River. The claims are exclusively owned by Canadian Superior Exploration Limited and geophysical surveys and linecutting in 1972 by personnel of that company form the basis of this report.

The claims form a contiguous block on the steep South facing slope of a canyon formed by a tributary to the Squingula River in the Skeena Mountains. Elevations range from 3,000' to 4,500' a.s.l. Vegetation consists of balsam, spruce, poplar and, particularly in creek bottom, dense patches of alder.

Access to the property is currently via fixed wing to Bear Lake, a distance of 100 miles from Smithers, thence by helicopter to the claim area.

HISTORY:

The claims were staked to cover an area drained by creeks anomalous in copper and molybdenum.

Kennco Explorations previously held claims in the area.

CONCLUSIONS AND RECOMMENDATIONS:

Magnetic patterns indicate a broad arcuate zone of intermittently higher magnetics peripheral to an area of interest outlined by prospecting.

The following program is recommended to help further define known zones and locate possible new areas of interest.

1. Expansion of the current grid to include the entire property.
2. Soil sampling and magnetometer surveys to be conducted over the expanded grid.
3. Detail geological mapping on a scale of 1"=400' be conducted over the entire property.
4. If encouragement is obtained from the above surveys they should be followed by an IP survey and diamond drilling.

#### GENERAL GEOLOGY:

The area of the IN group has not been mapped by the G.S.C. or the Provincial Department of Mines.

Reconnaissance geological work and extrapolation from the adjacent McConnell Creek (94D) map sheet indicate the property is underlain by Mesozoic island arc volcanics and sediments near the Eastern edge of the Bowser Basin.

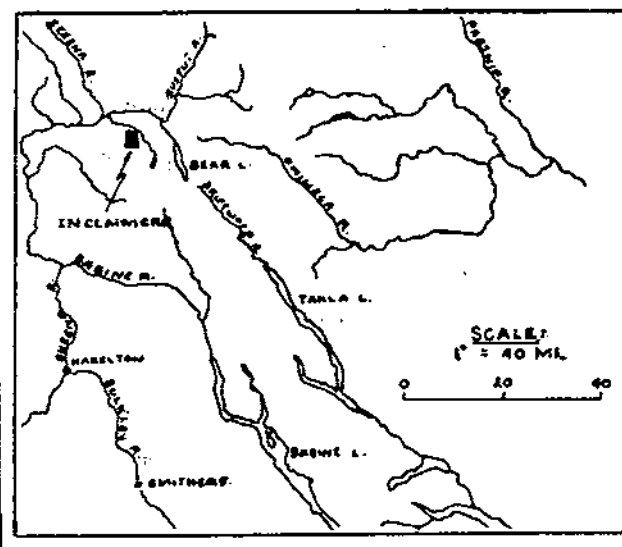
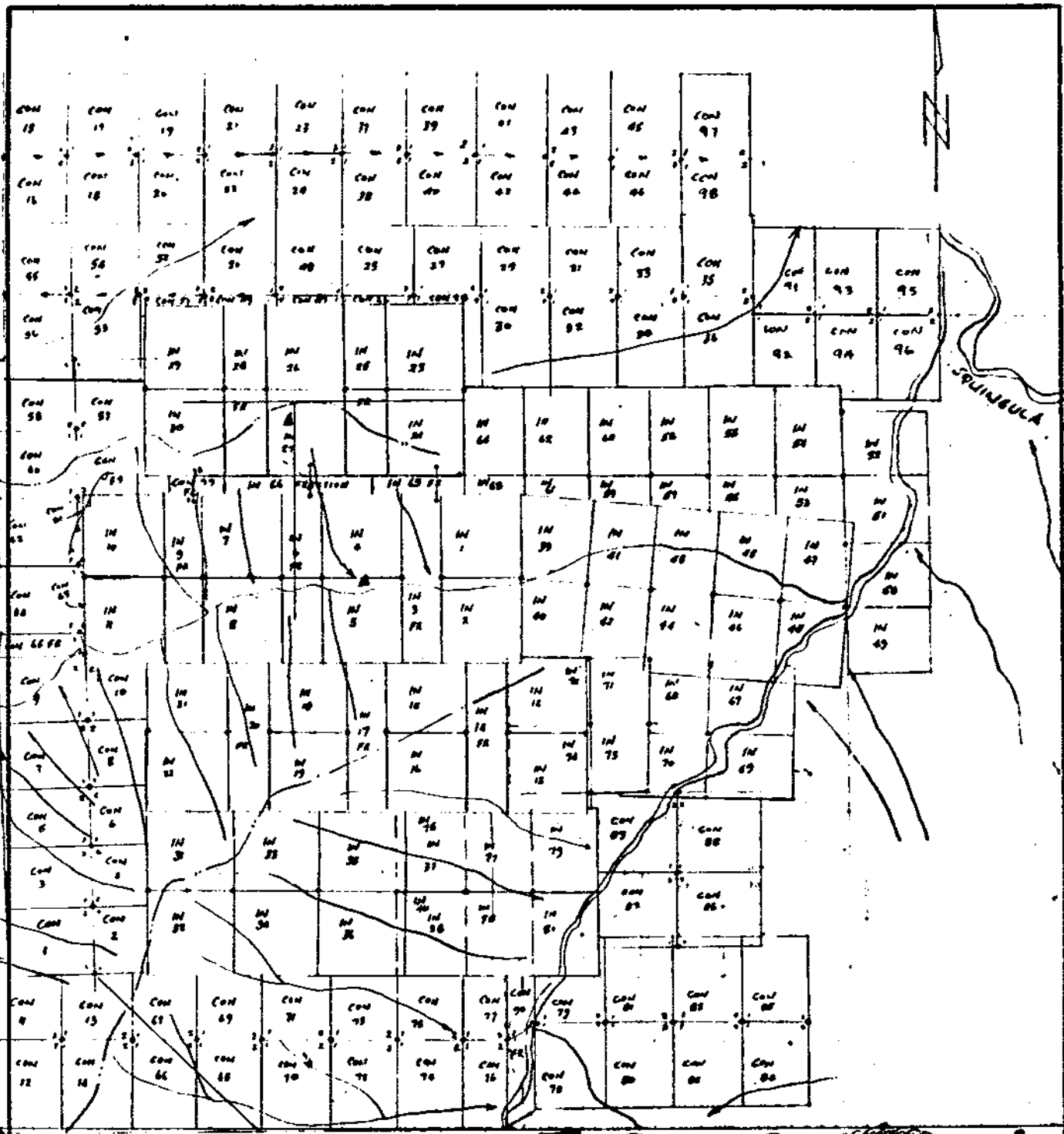
In the vicinity of the IN group mineralisation is associated with porphyry plugs, sills and dikes cutting volcanic and sedimentary assemblages.

#### MAGNETIC SURVEY

##### a) Methods

Magnetic data was collected with a Sharpes MF-1 fluxgate magnetometer which measures the vertical component of the earth's magnetic field. Readings were taken at chained 100' intervals along cut lines 400' apart. Diurnal variations in the field were corrected by establishing a primary base station at 0 s. on the baseline and secondary base stations where the survey lines crossed the baseline. All readings were corrected relative to the primary base station which was arbitrarily established at 540 gammas.

Magnetic data is presented as a plan contoured at 100 gamma intervals, showing survey lines, stations and corrected magnetic readings obtained at these stations.



**3868**

Dated October 16, 1972



CANADIAN SUPERIOR ENGINEERS LIMITED  
SMITHS REGIONAL OFFICE

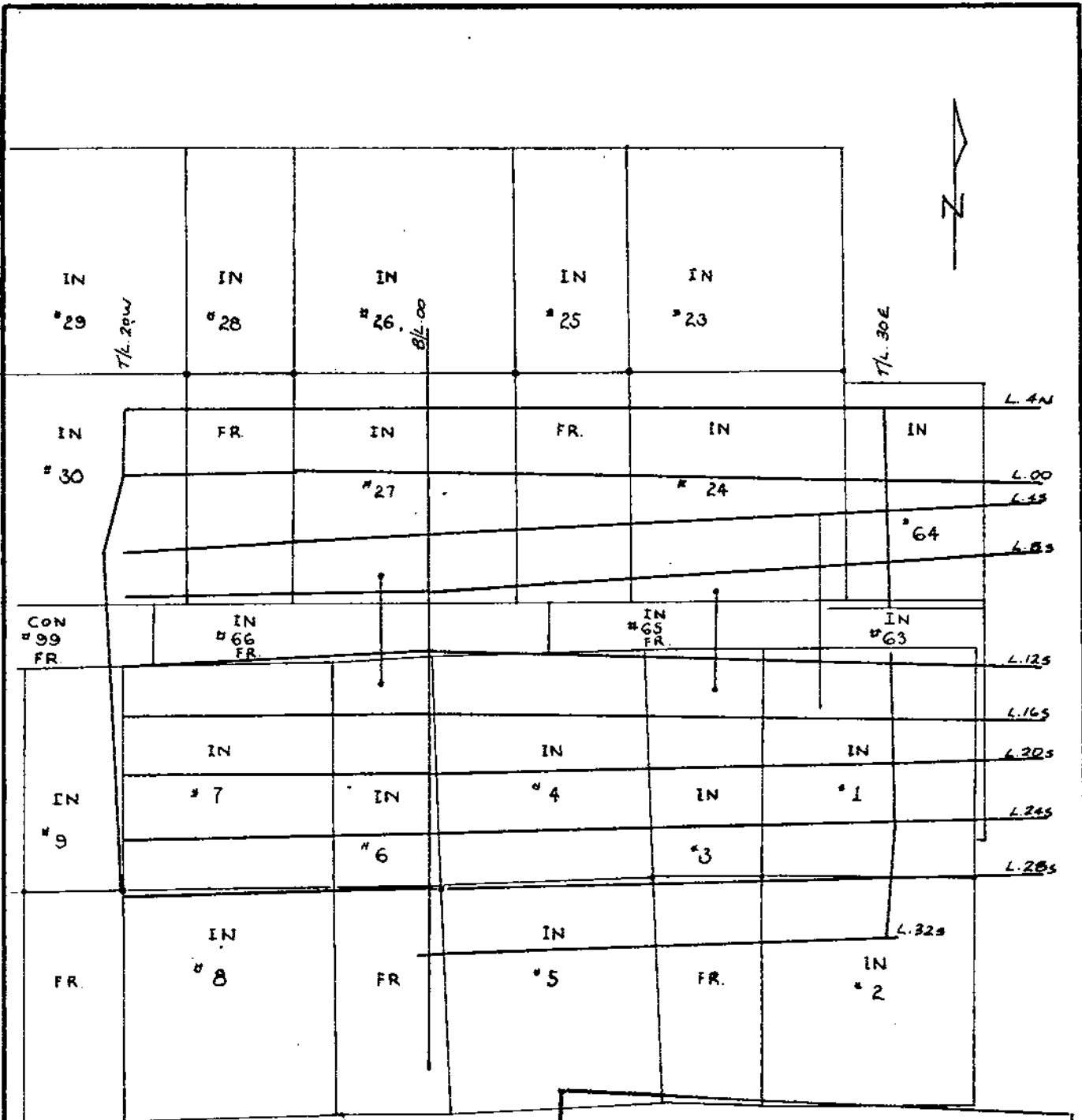
**IN GROUP**

**CLAIM LOCATION**

DRAUGHTSMAN: DF    SCALE: 1" = 40 mi    DATE: Oct. 1972

1-M 808E

Department of  
Mines and Petroleum Resources  
ASSESSMENT REPORT  
NO. 3868 MAP #1



Dated October 16, 1972

W. Rain



Department of  
Mines and Petroleum Resources  
ASSESSMENT REPORT  
NO. 3868 MAP #2

CANADIAN SUPERIOR EXPLORATION LIMITED  
SMITHERS REGIONAL OFFICE

IN GROUP  
GRID LOCATION

DRAUGHTSMAN: JB SCALE: 1" = 1000' DATE: OCT. 1972

b) Discussion of Results

There is moderate magnetic relief over the IN group with readings ranging from 270 gammas to 955 gammas.

The main feature is a magnetic high some 2000' long in an East-West direction and 1000' in a North-South direction. Other magnetic highs occur to the South and West of this feature forming a crudely arcuate zone of intermittent highs peripheral to a broad plateau region.

Geological evidence suggests these anomalies are caused by concentrations of magnetite in andesitic volcanic rocks and in porphyry sills intrusive into the volcanics. Magnetic relief over the Eastern survey area is generally low.

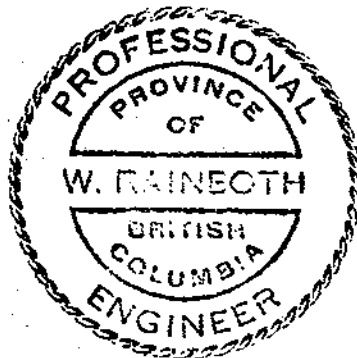
ECONOMIC CONSIDERATIONS:

In general, areas of higher magnetic response border mineralised zones. However, magnetic anomalies show a rather diffuse pattern which does not adequately define the present area of interest.

It is possible magnetometer surveys on the IN group may be useful only to indicate a more regional setting to copper mineralisation rather than as a definitive tool.

It is anticipated that the recommended geological and geochemical surveys will serve to define targets for IP and diamond drilling.

Dated at Smithers  
October 16, 1972



John F. Baker  
John F. Baker B. Sc.

W. Rainboth  
William Rainboth P. Eng.



APPENDIX I

ASSESSMENT DETAILS

PROPERTY NAME: IN GROUP

OWNER: CANADIAN SUPERIOR EXPLORATION LTD  
2201 - 1177 West Hastings Street  
Vancouver 1, B.C.

LOCATION: Squingula River Area  
Omineca Mining Division  
British Columbia

NUMBER OF CLAIMS: 18

NATURE OF WORK: Ground Magnetometer Survey  
Line cutting

TIME APPLIED FOR: One years work on each claim.

APPENDIX II

LABOUR COSTS

MAGNETOMETER SURVEY:

EMPLOYEE	POSITION	DAYS WORKED	RATE/DAY	COST/EMPLOYEE
Dave Ferguson	Geophysical Operator	4	\$30.00	\$120.00
John Baker	Geologist	2	\$35.00	\$70.00
William Rainboth	Exploration Manager	1	\$40.00	\$40.00
				<hr/> \$230.00

LINECUTTING:

EMPLOYEE	POSITION	DAYS WORKED	RATE/DAY	COST/EMPLOYEE
George Joseph	Linecutter	10	\$25.00	\$250.00
John Joseph	Linecutter	10	\$25.00	\$250.00
Nick Joseph	Linecutter	10	\$25.00	\$250.00
Tom Perry	Linecutter	10	\$25.00	\$250.00
Ray Fuller	Linecutter	10	\$25.00	\$250.00
Richard Tom	Linecutter	10	\$25.00	\$250.00
John Baker	Geologist	4	\$35.00	\$140.00
				<hr/> \$1640.00
	Total Labour Costs:			\$1870.00

APPENDIX III

COST STATEMENT

In support of an affidavit on application for certificates of work on IN 1-9, 23-30, 66 Fraction.

Costs incurred in conducting magnetometer survey and linecutting from August 24, 1972 to September 2, 1972.

MAGNETOMETER SURVEY:

LABOUR

Salaries as per Appendix II \$230.00

EXPENDABLE MATERIAL

Groceries \$50.00

EQUIPMENT RENTAL

Magnetometer 4 days @\$250/month \$33.32

\$313.32

LINECUTTING

LABOUR

Salaries as per Appendix II \$1640.00

EXPENDABLE MATERIAL

Groceries \$328.50

Operating supplies 25.00

TRANSPORTATION

Helicopter support on property (2 days) 150.00

\$2144.25

Total costs \$2457.57

APPENDIX IV

CERTIFICATE

I, John F. Baker, of the town of Smithers, Province of British Columbia do hereby certify:

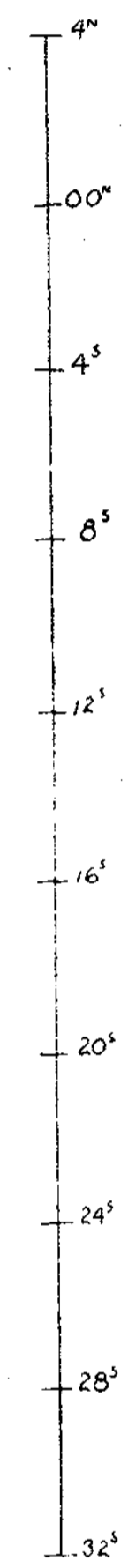
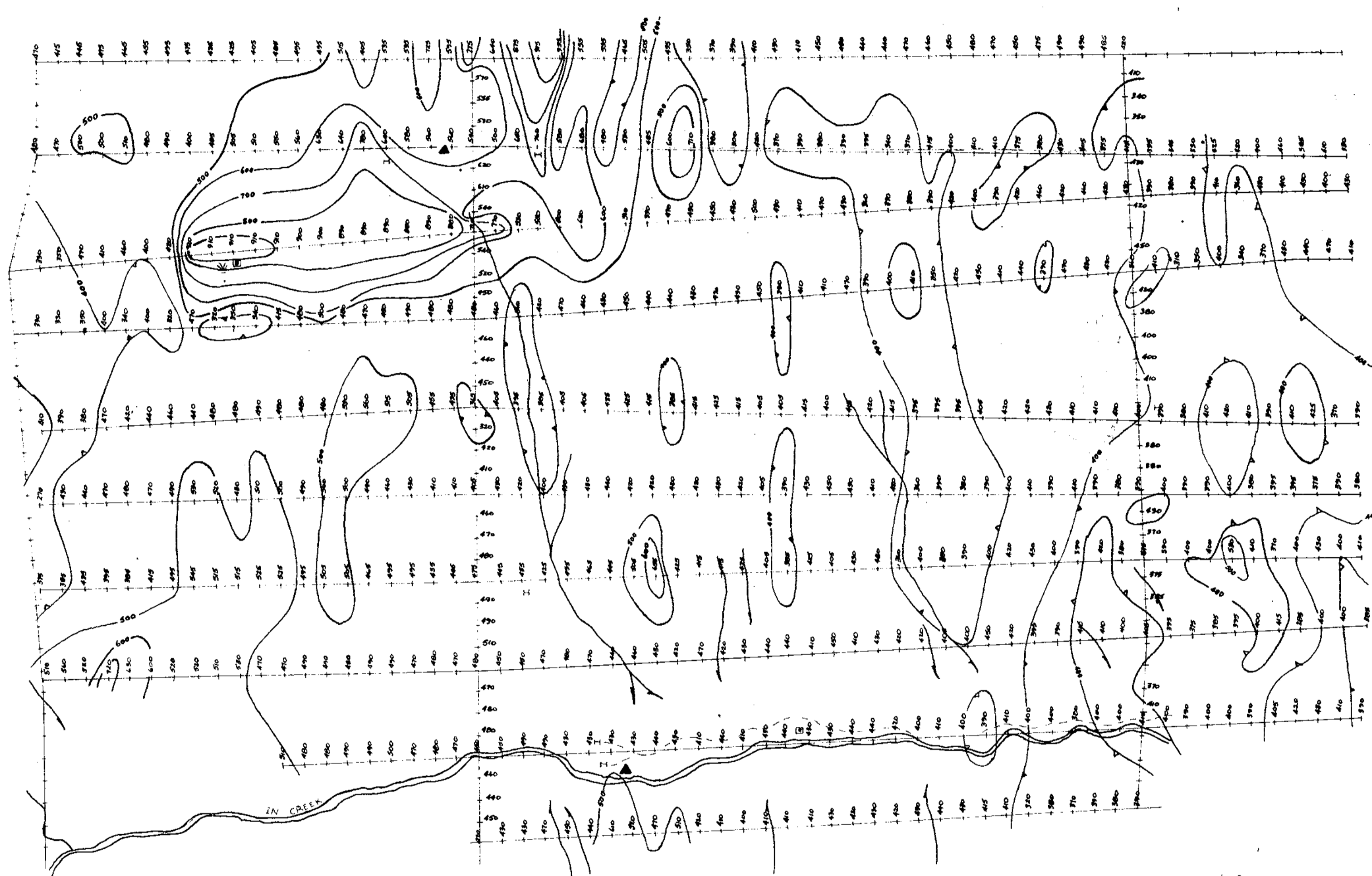
- 1) I am a geologist resident at 3-235 2nd Avenue North, Smithers, British Columbia.
- 2) I am a graduate of the University of British Columbia (1971) with a BSc. degree in Geology.
- 3) I have been employed in the mining industry for eight years and in a professional capacity since graduation.

Dated at Smithers

This 16th day of October, 1972

John F. Baker

John F. Baker PSc.



3868

M-3

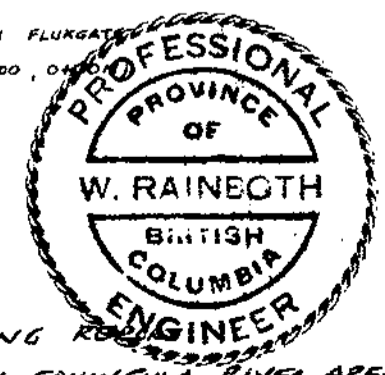
SYMBOLS:

GEOLOGY:

Department of  
Mines and Petroleum Resources  
ASSESSMENT REPORT  
NO. 3868 MAP #3

INSTRUMENTATION  
ARBITRARY BASE  
CONTOUR INTERVAL

SHARPS MF-1 FLUKAGE  
240 X (8) 00, 01  
100 X



CANADIAN SUPERIOR EXPLORATION LIMITED  
SMITHERS REGIONAL OFFICE

IN GROUP  
MOTASE AREA

MAGNETIC SURVEY

DRAUGHTSMAN: JB SCALE: 1"=400' DATE: OCT. 1972

TO ACCOMPANY GEOPHYSICAL & UNCLIPPING REPORT  
ON THE IN GROUP OF MINERAL CLAIMS, SQUINGULA TOWER AREA  
QUINCELA M.D. BY JOHN BAKER B.Sc. & WILLIAM BRINBOTH P.E.N.G.  
DATED AT SMITHERS OCTOBER 16, 1972 W. Rainboth