

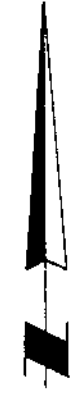
RETURN TO  
DEPARTMENT OF MINES AND PETROLEUM RESOURCES  
VICTORIA, BRITISH COLUMBIA

926/12W  
LINE CUTTING REPORT

CLAIMS: W M.H.  
OWNER: CONE MOUNTAIN MINES LTD. NPL  
MINING DIVISION: VANCOUVER  
WORK DONE: OCT. 16-21/72

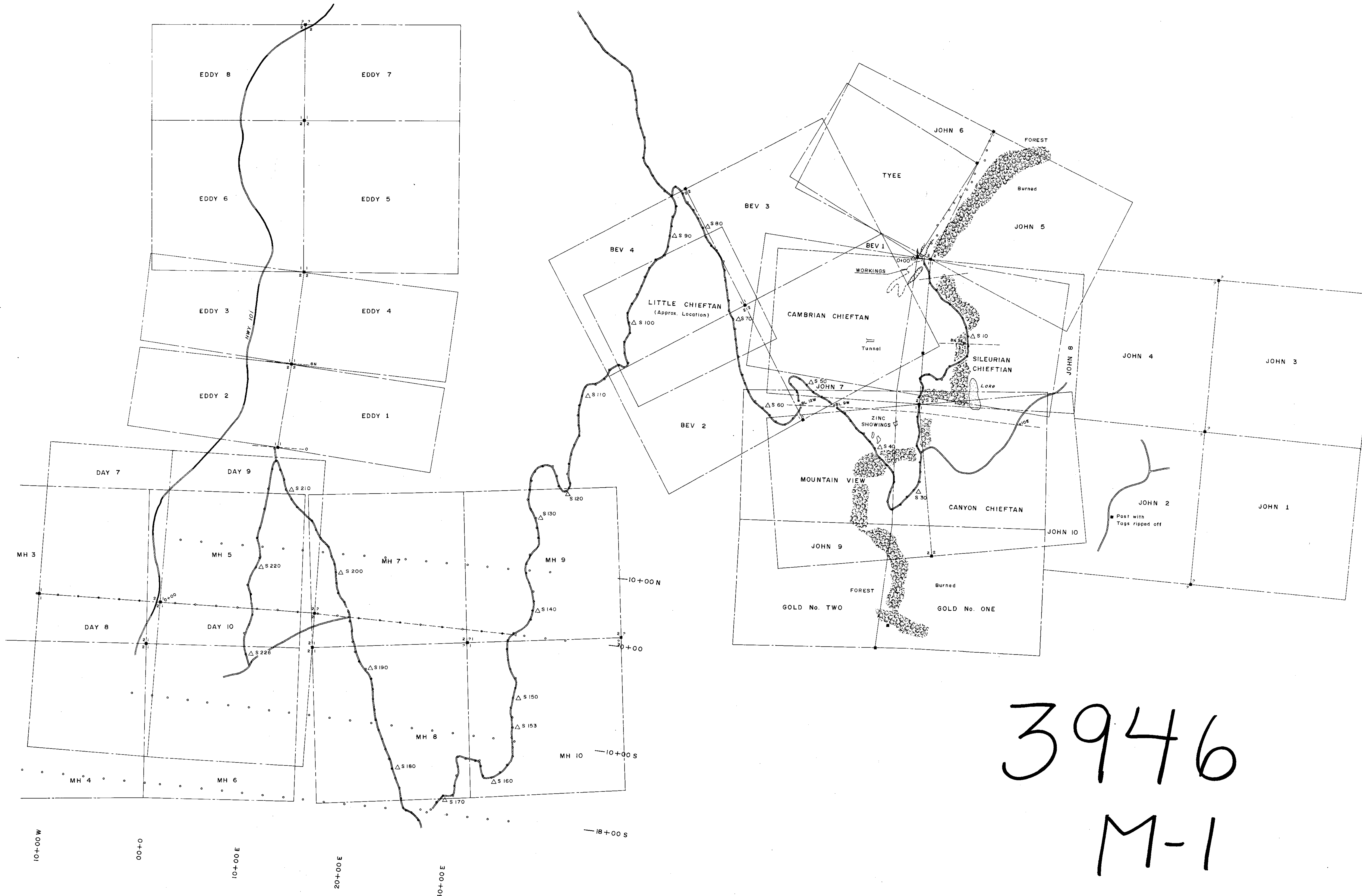
3946

123°58'



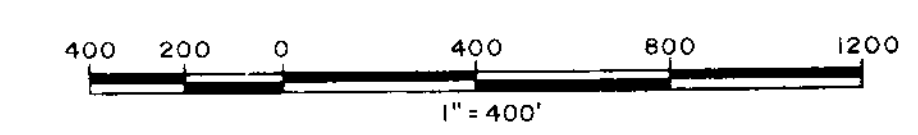
LEGEND

- Contour Line, Contour Interval
- Stations
- Outline of Claims
- Claim Posts
- Unpaved Roads



3946  
M-1

Department of  
Mines and Petroleum Resources  
ASSESSMENT REPORT  
NO. 3946 MAP #1



CONE MOUNTAIN MINES LTD.	
Work Done Oct. 16-21/72	
VANCOUVER MINING DIVISION - BRITISH COLUMBIA	
LINE CUTTING & CLAIM SURVEY MH CLAIM GROUP	
INTERPRETED BY: G.E.W.	
DRAWN BY:	
CHECKED BY:	
DATE:	
FIG. No.:	

*Glen E. White*  
geophysical consulting  
&  
services Ltd.  
16/10/72