

4044

QI/7W

GEOCHEMICAL REPORT
ON THE

OXBOW GROUP
(Oxbow 1-40 Mineral Claims)

15 miles northwest of Merritt
Lat. 50°18'N, Long. 120°54'W

by
M.K. Lorimer, B.A.Sc., P.Eng.

21 November, 1972

for

Robina Explorations Ltd. (N.P.L.)

Work Done 27 September - 23 October, 1972

<p>Department of Mines and Petroleum Resources ASSESSMENT REPORT NO. 4044 MAP</p>

TABLE OF CONTENTS

	<u>PAGE</u>
SUMMARY	1
OBJECT	2
LOCATION	2
TITLE	2
TOPOGRAPHY	3
GEOLOGY	3
HISTORY	3
1972 PROGRAMME	3
GEOCHEMICAL SURVEY	4
CONCLUSIONS	5
RECOMMENDATIONS	6
COSTS	6
BIBLIOGRAPHY	7
CERTIFICATE OF QUALIFICATIONS	
APPENDIX A.	Cost Summary
B.	Certificate of Analysis
C.	Logarithmic Plots
MAPS #11.	Location Map
#22.	Property Map
#33.	Geochemical Map

L. J. MANNING & ASSOCIATES LTD.

CONSULTING MINING AND GEOLOGICAL ENGINEERS

610-690 WEST PENDER STREET VANCOUVER 1, B.C.

OFFICE PHONE:
683-5861

RESIDENTIAL PHONE:
L. J. MANNING 4 985-3690

SUMMARY

A geochemical survey was made of the southern two-thirds of the Oxbow Group, located 15 miles northwest of Merritt, in October, 1972.

The area is rugged but not precipitous. Thick vegetation, fallen trees and swampy areas make walking difficult. An unimproved road gives access to the centre of the property.

The claims are underlain by granodiorite and quartz monzonite. A later intrusion of quartz monzonite has been mapped in the east-central area. Glacial debris occurs in several localities.

The geochemical survey revealed many copper anomalies, mostly small, and several are obvious drainage phenomena. However, three anomalies occurring near the quartz monzonite intrusive are regarded as significant.

It is recommended that the geochemical survey be completed and that areas of interest be surveyed geologically and geophysically. Target areas should be tested by drilling.

The recommended work is estimated to cost about \$14,000 exclusive of drilling.

REPORT ON
A GEOCHEMICAL SURVEY
OF THEOX BOW GROUP
NICOLA MINING DIVISIONOBJECT:

This report is submitted for the purpose of describing and recording the results of a geochemical survey carried out on a portion of the Oxbow Group of Mineral Claims in September and October, 1972, and for the purpose of recording the conclusions to be drawn from these results.

LOCATION:

The claims are located in the Highland Valley area approximately 10 miles north of Lower Nicola. They occupy the high ground between Tyner and Broom Creeks and are accessible, with some walking, from the Tyner Lake road, the Chataway Lake road or a road leading north-westerly from near the Aberdeen Mine. Alternatively they may be reached by four-wheel drive vehicle over an unimproved road which leads onto the southern half of the group. The road distance from Merritt is about 20 miles.

Elevations range from about 4200 feet to 4900 feet. The geographic location is 50°18'N, 120°54'W, the area is 9217W of the National Topographic System and the Mining Division is Nicola. Map 1.

TITLE:

The property consists of 40 contiguous located claims as follows:

<u>Name</u>	<u>Record Nos.</u>	<u>Expiry Date</u>	<u>Owner</u>
Oxbow 1-40	43803-42	4 December 72	Robina Explorations Ltd. (N.P.L.)

A compass and chain survey of the property made in conjunction with the laying out of an exploration grid shows the claims to be approximately as shown on Map 2.

There is some question as to the validity of the Oxbow 10, 12 and 14 claims. They appear to be staked, in part at least, over older claims of the Crown group.

TOPOGRAPHY:

The overall relief is not great but locally there are gulleys, cliffs and generally rough ground. Several minor water courses and swampy areas occur on the western half. There are no important streams or lakes on the property with the possible exception of Broom Creek at the northern extremity.

The vegetation is dense over most of the area. It varies from alder and willow in the low-lying parts to pine and spruce on higher ground. In places, fallen trees cover the ground to depths of three or four feet.

Outcrops are common but at least 95% of the area is overburden. Glacial drift is a frequent form of overburden.

GEOLOGY:

The property lies in the southeastern part of the Guichon Creek batholith. This batholith is considered by K. E. Northcote to be a composite of several phases of quartz diorite, granodiorite, quartz monzonite and granite intrusives. The particular phase underlying the Oxbow claims has been named the Chataway variety of the Highland Valley phase. It consists of granodiorite and quartz monzonite. These rocks have been intruded in the mid-eastern part of the property by an elliptical stock of quartz monzonite about three quarters of a mile long.

An interpretation by R. D. Crosby, P.Eng., formerly of Seigel Associates Ltd., of aeromagnetic data shows two faults crossing the property. One strikes northwesterly and the other north-northeasterly, the intersection being in the northwestern section. Map 2.

HISTORY:

As far as is known, no mining activities have been carried out on the property although it has undoubtedly been prospected.

1972 PROGRAMME:

In September, 1972, the present owners embarked on an exploration programme to consist initially of a geochemical survey.

A grid was laid out with a base line running north from the mid-point on the southern boundary to line 88N, Map 3. This line was designated 40E. From it, lines were run at right angles at 400-foot intervals with stations staked or flagged at 200-foot intervals. All lines were run by compass and the stations set by measurement with a nylon chain. The lines were marked by blazing, flagging and brush-cutting. No work was done north of line 88N.

On this grid soil samples were taken and from it the claim posts and topographic features were located.

A compass and chain traverse was run along the Tyner Creek road to an unnamed lake for the purpose of correctly locating the claim group. It is about 500 feet west and 1000 feet north of the location shown on the staking map. Internal surveys show that the northerly range of the group is less than shown since many of the claims were staked "short".

The work was done in the period 27 September - 23 October, 1972.

The crew consisted of:

M. K. Lorimer, P. Eng.	Supervisor	5 days
D. G. Lorimer	Party chief and soil sampler	27 days
P. Rosso	Line cutter	27 days
V. Shaw	Line cutter	25 days
E. Lorimer	Survey helper	2 days

A cost summary is given as Appendix A.

GEOCHEMICAL SURVEY:

A. Procedure: Since sampling locations varied from bare rock to deep humus there was some variation in the types of samples obtained. Every effort was made to sample below the humus but this was not always possible. In most cases, samples were taken about 12 inches below the surface.

A small grub hoe was used for making holes and the samples were collected with a trowel and placed in kraft bags.

Analyses for copper were made by General Testing Laboratories of Vancouver. The samples were dried at 100°C and screened at 80 mesh. Decomposition was by hot HNO₃ and HCl₄, and analysis by atomic absorption.

Copies of the certificates of analysis are attached as Appendix B.

B. Results: The results are plotted and contoured on Map 3.

A logarithmic plot of parts per million against cumulative percentages is given as Appendix C. This plot shows a break at approximately 65 parts per million. For the purposes of this report, values of 65 p.p.m. and over are regarded as anomalous.

Many of the anomalous readings are "singles" and are probably due to local accumulations. Two sets of lineations, striking north-easterly and northwesterly, are apparent. The lineation running northwesterly from 12N, 45E is probably a drainage phenomenon since it coincides with a topographic depression. The parallel lineation from 24N, 64E is less easily dismissed since it is on higher ground than the nearby depression which is followed by the road. The anomalous readings in the northwestern corner of the surveyed area are mostly "singles" and are probably local accumulations since the area is characterized by outcrops and swamps.

The lineation running northeasterly from 32N, 12E seems to have no topographic connection but may be due to glacial accumulations which are common in the area.

The most significant anomalies appear to be those at the extreme north of the surveyed area. They are fairly extensive, the values are moderately high and the areas are of moderate relief. But most important, they coincide with the mapped location of the quartz monzonite intrusive.

CONCLUSIONS:

The surveyed area has many anomalous localities, most of them small, and most of them probably attributable to drainage or glacial accumulations.

Two fairly extensive anomalies at the northern boundary of the surveyed area are regarded as significant since they do not appear to be due to topography and they coincide with the mapped location of a quartz monzonite intrusive.

The results to date are sufficiently encouraging to warrant further investigation of the property, particularly near the northern anomalies and on the unsurveyed claims to the north.

RECOMMENDATIONS:

In accordance with the foregoing discussion and conclusions it is recommended:

1. That geochemical surveying of the northern claims be completed.
2. That a geological survey be made of areas of geochemical interest.
3. That induced polarization surveys be made of suitable areas defined from the preceding work.
4. That test drilling be done in any target areas located by these surveys.

COSTS:

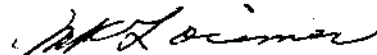
The estimated costs of the recommended programme are:

Geochemical survey	\$ 2,500
Geological survey	2,500
I.P. survey (assuming $\frac{1}{4}$ of total area)	6,000
Engineering & supervision	2,000
Miscellaneous & contingencies	<u>1,000</u>
Total	\$ 14,000

No estimate of the cost of diamond drilling can be made at this time but a probable minimum would be 1000 feet at \$15 per foot for a minimum expenditure of \$15,000.

Yours truly,

L. J. MANNING & ASSOCIATES LTD.



M. K. Lorimer, P.Eng.

MKL:kd1

BIBLIOGRAPHY

- Cockfield, W.E.: "Geology and Mineral Deposits of Nicola Map Area, British Columbia", Geological Survey of Canada, Memoir 249, 1961.
- Northcote, K.E. "Geology and Geochronology of the Guichon Creek Batholith, B.C.", Unpublished University of British Columbia PhD. Thesis, 1965.
- Tan, S.S., B.Sc., E.I.T. "Preliminary Report on the Geology of the Oxbow Claims", Private Report, 1969.


CERTIFICATE OF QUALIFICATIONS

I, MALCOLM KEITH LORIMER, of the City of Vancouver, Province of British Columbia, Mining Engineer, hereby certify:

1. THAT I am a practicing Mining Engineer and reside at 3082 West 27th Avenue, Vancouver, B.C.
2. THAT I am a graduate in Mining Engineering of the University of British Columbia, Bachelor of Applied Science, 1950 and have been practicing my profession for over twenty-two years.
3. THAT I am a member of the Association of Professional Engineers of the Province of British Columbia.
4. THAT I am a member of the Canadian Institute of Mining and Metallurgy.
5. THAT I am an associate of the firm of L. J. Manning & Associates Ltd., Consulting Mining Engineers, of 310 - 890 West Pender Street, Vancouver 1, B.C.
6. THAT the following is a true record of my employment and experience:

1950 - 52	General engineering, Consolidated Mining and Smelting Company of Canada Limited, Kimberley, B.C.
1952 - 56	Chief Engineer, Pioneer Gold Mines of B.C. Ltd., Pioneer Mines, B.C.
1956 - 57	Chief Engineer, Buchans Mining Co. Ltd. Buchans, Nfld.
1957 - 59	Chief Engineer and Mine Superintendent, Cowichan Copper Co. Ltd., Cowichan Lake, B.C.
1959 - 65	General Exploration work for various companies mostly in southern British Columbia.
1965 - Present	Associate, L. J. Manning & Associates Ltd., Vancouver.
7. THAT I have no direct or indirect interest in the properties or securities of Robina Explorations Ltd. (N.P.L.) or any of its affiliates nor do I expect to acquire any.

DATED at Vancouver, British Columbia, the 21st day of November, 1972.



M. K. Lorimer, B.A. Sc., P. Eng.

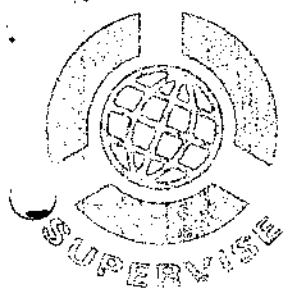
APPENDIX A

COST SUMMARY

<u>Field Labour:</u>	M. K. Lorimer: 51 hrs @ \$18.75	956.25	
	D. G. Lorimer: 194½ hrs @ \$4.00	778.00	
	P. Rosso: 194½ hrs @ \$3.75	729.38	
	V. Shaw: 179½ hrs @ \$3.75	673.12	
	E. Lorimer: 16 hrs @ \$3.75	60.00	
	Labour overhead @ 56% (2240.50) (.56)	1,254.68	
			<u>\$4,451.43</u>
<u>Transportation:</u>	4-wheel drive rental	441.00	
	Gasoline, oil, etc.	83.73	
	Repairs	47.50	
	Fares	<u>79.20</u>	
Total transportation			651.43
<u>Accommodation:</u>	Willow Motel, Merritt	444.00	
	Plaza Hotel, Kamloops	<u>12.60</u>	
Total accommodation			456.60
<u>Meals:</u>	(\$7.00 per man/day)		639.00
<u>Soil analysis:</u>	500 @ \$1.25 less 5%		593.75
<u>Report:</u>	Plotting, drafting, interpretation & writing 39 hours @ \$18.75		<u>731.25</u>
Total			\$7,523.46

Declared before me at the *City*
of *Vancouver*, in the
Province of British Columbia, this *30*
day of *Nov.* 1972, A.D.

John J. [Signature]
A Commissioner for taking Affidavits within British Columbia or
A Notary Public in and for the Province of British Columbia,
Sub-Mining Recorder



GENERAL TESTING LABORATORIES

DIVISION SUPERINTENDENCE COMPANY (CANADA) LTD

1001 EAST PENDER STREET VANCOUVER 6, B.C., CANADA
 PHONE (604) 254-1647 TELEX 04-507514 CABLE SUPERVISE

TO:

L.J. Marning & Associates Ltd.

CERTIFICATE OF ASSAY

No. **7211-0626** DATE: **10-11-72**

We hereby certify that the following are the results of assays on: **Geochemical Samples**

Page 3

MARKED	COPPER							
	(Cu) PPM						OZ/ST GR/MT	OZ/ST GR/MT
L16N 66E	25							
L20N 12E	45							
L20N 14E	25							
L20N 16E	20							
L20N 18E	10							
L20N 20E	40							
L20N 22E	20							
L20N 24E	35							
L20N 26E NO SAMPLE								
L20N 28E	23							
L20N 30E	20							
L20N 32E NO SAMPLE								
L20N 34E	20							
L20N 36E	23							
L20N 38E	228							
L20N 40E	50							
L20N 42E	8							
L20N 44E	30							
L20N 46E	38							
L20N 48E	43							
L20N 50E	58							
L20N 52E	20							
L20N 54E	33							
L20N 56E	5							
L20N 58E	5							
L20N 60E	20							
L20N 62E	45							
L20N 64E	30							
L24N 12E	13							
L24N 14E	20							
L24N 16E	20							
L24N 18E	10							
L24N 20E	38							
L24N 22E	30							
L24N 24E	43							

NOTE: REJECTS RETAINED ONE MONTH. PULPS RETAINED THREE MONTHS. ON REQUEST PULPS AND REJECTS WILL BE STORED FOR A MAXIMUM OF ONE YEAR.

ALL REPORTS ARE THE CONFIDENTIAL PROPERTY OF CLIENTS PUBLICATION OF STATEMENTS, CONCLUSION OR EXTRACTS FROM OR REGARDING OUR REPORTS IS NOT PERMITTED WITHOUT OUR WRITTEN APPROVAL. ANY LIABILITY ATTACHED THERETO IS LIMITED TO THE FEE CHARGED.

Cont'd ...

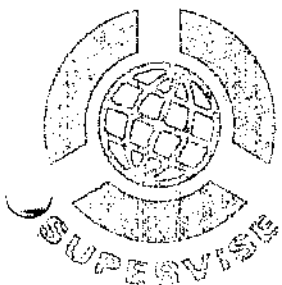
H. Sharples
 H. Sharples

PROVINCIAL ASSAYER

COPY

Analytical and Consulting Chemists, Bulk Cargo Specialists, Surveyors, Inspectors, Samplers, Weighers

MEMBER American Society For Testing Materials • The American Oil Chemists' Society • Canadian Testing Association
 REFEREE AND/OR OFFICIAL CHEMISTS FOR Vancouver Merchants Exchange • National Institute Of O'leoc Products • The American Oil Chemists' Society
 OFFICIAL WEIGHMASTERS FOR Vancouver Board Of Trade • Vancouver Merchants Exchange



GENERAL TESTING LABORATORIES

DIVISION: SUPERINTENDENCE COMPANY (CANADA) LTD

1001 EAST PENDER STREET, VANCOUVER 6, B.C., CANADA
PHONE (604) 254 1647 TELEFAX 04-507514 CABLE SUPERVISE

TO:

L.J. Manning & Associates Ltd.

CERTIFICATE OF ASSAY

No. 7211-0626 DATE 10-11-72

We hereby certify that the following are the results of assays on: **Geochemical Samples** Page 4

MARKED	COPPER	XX					XX	
	(Cu)PPM						OZ/ST GR/MT	OZ/ST GR/MT
L24N 26E	65							
L24N 28E	23							
L24N 30E	18							
L24N 32E	65							
L24N 34E	18							
L24N 36E	290							
L24N 38E	33							
L24N 40E	8							
L24N 42E	95							
L24N 44E	NO SAMPLE							
L24N 46E	310							
L24N 48E	23							
L24N 50E	3							
L24N 52E	15							
L24N 54E	15							
L24N 56E	25							
L24N 58E	25							
L24N 60E	18							
L24N 62E	125							
L24N 64E	295							
L28N 12E	20							
L28N 14E	8							
L28N 16E	13							
L28N 18E	40							
L28N 20E	20							
L28N 22E	35							
L28N 24E	70							
L28N 26E	43							
L28N 28E	60							
L28N 30E	165							
L28N 32E	13							
L28N 34E	20							
L28N 36E	50							
L28N 38E	13							
L28N 40E	28							

NOTE REJECTS RETAINED ONE MONTH PULPS RETAINED THREE MONTHS. ON REQUEST PULPS AND REJECTS WILL BE STORED FOR A MAXIMUM OF ONE YEAR.

Cont'd ...

ALL REPORTS ARE THE CONFIDENTIAL PROPERTY OF CLIENTS. PUBLICATION OF STATEMENTS, CONCLUSION OR EXTRACTS FROM OR REGARDING OUR REPORTS IS NOT PERMITTED WITHOUT OUR WRITTEN APPROVAL. ANY LIABILITY ATTACHED THERETO IS LIMITED TO THE FEE CHARGED.

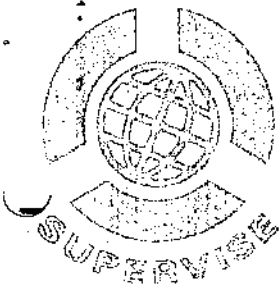
H. Sharples
H. Sharples

PROVINCIAL ASSAYER

Analytical and Consulting Chemists, Bulk Cargo Specialists, Surveyors, Inspectors, Samplers, Weighers

MEMBER American Society For Testing Materials • The American Oil Chemists' Society • Canadian Testing Association
REPRESENT AND/OR OFFICIAL CHEMISTS FOR Vancouver Merchants Exchange • National Institute Of Oilseed Products • The American Oil Chemists' Society
OFFICIAL WEIGHMASTERS FOR Vancouver Board Of Trade • Vancouver Merchants Exchange

COPY



GENERAL TESTING LABORATORIES

DIVISION: SUPERINTENDENCE COMPANY (CANADA) LTD

100, EAST PENDER STREET, VANCOUVER 6, B.C., CANADA
 PHONE (604) 254-1647 TELEX 04-507514 CABLE SUPERVISE

TO:

L.J. Manning & Associates Ltd.

CERTIFICATE OF ASSAY

No. **7211-0626** DATE: **10-11-72**

We hereby certify that the following are the results of assays on **Geochemical Samples**

Page 5

MARKED	COPPER						
	(Cu) PPM					OZ/ST GR/MT	OZ/ST GR/MT
L28N 42E	5						
L28N 44E	5						
L28N 46E	23						
L28N 48E	53						
L28N 50E	25						
L28N 52E	10						
L28N 54E	18						
L28N 56E	15						
L28N 58E	63						
L28N 60E	20						
L28N 62E	20						
L28N 64E	85						
L32N 12E	88						
L32N 14E	65						
L32N 16E	23						
L32N 18E	20						
L32N 20E	43						
L32N 22E	15						
L32N 24E	NO SAMPLE						
L32N 26E	88						
L32N 28E	73						
L32N 30E	8						
L32N 32E	5						
L32N 34E	25						
L32N 36E	3						
L32N 38E	18						
L32N 40E	380						
L32N 42E	20						
L32N 44E	10						
L32N 46E	40						
L32N 48E	NO SAMPLE						
L32N 50E	10						
L32N 52E	10						
L32N 54E	NO SAMPLE						
L32N 56E	183						

NOTE: REJECTS RETAINED ONE MONTH. PULPS RETAINED THREE MONTHS. ON REQUEST PULPS AND REJECTS WILL BE STORED FOR A MAXIMUM OF ONE YEAR.

ALL REPORTS ARE THE CONFIDENTIAL PROPERTY OF CLIENTS. PUBLICATION OF STATEMENTS, CONCLUSIONS OR EXTRACTS FROM OR REGARDING OUR REPORTS IS NOT PERMITTED WITHOUT OUR WRITTEN APPROVAL. ANY LIABILITY ATTACHED THERETO IS LIMITED TO THE FEE CHARGED.

Cont'd ...

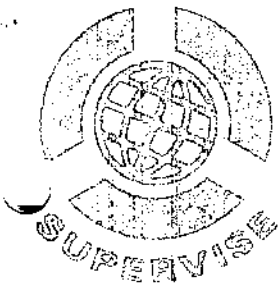
H. Sharples
H. Sharples

PROVINCIAL ASSAYER

COPY

Analytical and Consulting Chemists, Bulk Cargo Specialists, Surveyors, Inspectors, Samplers, Weighers

MEMBER: American Society For Testing Materials • The American Oil Chemists' Society • Canadian Testing Association
 REFEREE AND/OR OFFICIAL CHEMISTS FOR: Vancouver Merchants Exchange • National Institute Of Oiled Products • The American Oil Chemists' Society
 OFFICIAL WEIGHMASTERS FOR: Vancouver Board Of Trade • Vancouver Merchants Exchange



GENERAL TESTING LABORATORIES

DIVISION SUPERINTENDENCE COMPANY (CANADA) LTD

1001 EAST PENDER STREET, VANCOUVER 6, B.C., CANADA
 PHONE (604) 254-1647 TELEX 04 507514 CABLE SUPERVISE

TO:

L.J. Manning & Associates Ltd.

CERTIFICATE OF ASSAY

No: **7211-0626**

DATE: **10-11-72**

We hereby certify that the following are the results of assays on: **Geochemical Samples**

Page 6

MARKED	COPPER							
	(Cu) PPM						OZ/ST GR/MT	OZ/ST GR/MT
L32N 59E	45							
L32N 60E	45							
L32N 62E	153							
L32N 64E	5							
L36N 12E	63							
L36N 14E	40							
L36N 16E	65							
L36N 18E	25							
L36N 20E	23							
L36N 32E	8							
L36N 24E NO SAMPLE								
L36N 26E	99							
L36N 28E	38							
L36N 30E	25							
L36N 32E	30							
L36N 34E	13							
L36N 36E	33							
L36N 38E	30							
L36N 40E	78							
L36N 42E	18							
L36N 44E	38							
L36N 46E	18							
L36N 48E	15							
L36N 50E	48							
L36N 52E	383							
L36N 54E	33							
L36N 56E	90							
L36N 58E	13							
L36N 60E	93							
L36N 62E	23							
L36N 64E	80							
L40N 12E	23							
L40N 14E	23							
L40N 16E	35							
L40N 18E	20							

NOTE: REJECTS RETAINED ONE MONTH. PULPS RETAINED THREE MONTHS. ON REQUEST PULPS AND REJECTS WILL BE STORED FOR A MAXIMUM OF ONE YEAR.

Cont'd ...

ALL REPORTS ARE THE CONFIDENTIAL PROPERTY OF CLIENTS. PUBLICATION OF STATEMENTS, CONCLUSION OR EXTRACTS FROM OR REGARDING OUR REPORTS IS NOT PERMITTED WITHOUT OUR WRITTEN APPROVAL. ANY LIABILITY ATTACHED THERETO IS LIMITED TO THE FEE CHARGED.

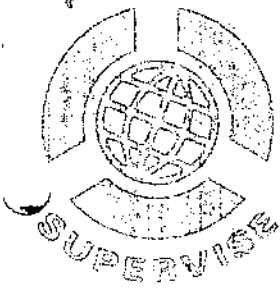
H. Charles
H. Charles

PROVINCIAL ASSAYER

COPY

Analytical and Consulting Chemists, Bulk Cargo Specialists, Surveyors, Inspectors, Samplers, Weighers

MLMBFR: American Society For Testing Materials • The American Oil Chemists' Society • Canadian Testing Association
 REFERRED AND/OR OFFICIAL CHEMISTS FOR Vancouver Merchants Exchange • National Institute Of Oilseed Products • The American Oil Chemists' Society
 OFFICIAL WEIGHMASTERS FOR Vancouver Board Of Trade • Vancouver Merchants Exchange



GENERAL TESTING LABORATORIES

DIVISION: SUPERINTENDENCE COMPANY (CANADA) LTD

1001 EAST PENDER STREET VANCOUVER 6, B.C. CANADA
 PHONE (604) 254-1647 TELEEX 04 507514 CABLE SUPERVISE

TO:

L. J. Manning & Associates Ltd.

CERTIFICATE OF ASSAY

No. **7211-0626** DATE: **10-11-72**

We hereby certify that the following are the results of assays on: **Geochemical Samples**

Page 7

MARKED	COPPER					GOLD		SILVER	
	(Cu) PPM					OZ/ST GR/MT	OZ/ST GR/MT		
L40N 20E	8								
L40N 22E	13								
L40N 24E	400								
L40N 26E	NO SAMPLE								
L40N 28E	25								
L40N 30E	25								
L40N 32E	8								
L40N 34E	25								
L40N 36E	30								
L40N 38E	20								
L40N 40E	40								
L40N 42E	18								
L40N 44E	30								
L40N 46E	33								
L40N 48E	30								
L40N 52E	48								
L40N 54E	20								
L40N 56E	103								
L40N 58E	25								
L40N 60E	13								
L40N 62E	8								
L40N 64E	23								
L44N 12E	30								
L44N 14E	55								
L44N 16E	20								
L44N 18E	33								
L44N 20E	63								
L44N 22E	90								
L44N 24E	25								
L44N 26E	23								
L44N 28E	33								
L44N 30E	28								
L44N 32E	23								
L44N 34E	20								
L44N 36E	138								

NOTE: REJECTS RETAINED ONE MONTH. PULPS RETAINED THREE MONTHS ON REQUEST
 PULPS AND REJECTS WILL BE STORED FOR A MAXIMUM OF ONE YEAR.

ALL REPORTS ARE THE CONFIDENTIAL PROPERTY OF CLIENTS. PUBLICATION OF STATEMENTS, CONCLUSION OR EXTRACTS FROM OR REGARDING OUR REPORTS IS NOT PERMITTED WITHOUT OUR WRITTEN APPROVAL. ANY LIABILITY ATTACHED THERETO IS LIMITED TO THE FEE CHARGED.

Cont'd ...

H. Staples
 H. Staples
 PROVINCIAL ASSAYER

COPY

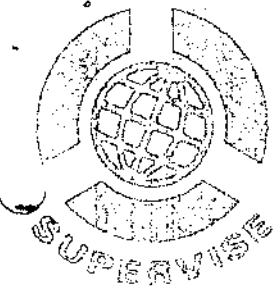
Analytical and Consulting Chemists, Bulk Cargo Specialists, Surveyors, Inspectors, Samplers, Weighers

MEMBER American Society For Testing Materials • The American Oil Chemists' Society • Canadian Testing Association
 REFERRED AND/OR OFFICIAL CHEMISTS FOR Vancouver Merchants Exchange • National Institute Of Good Seed Products • The American Oil Chemists' Society
 OFFICIAL WEIGHMASTERS FOR Vancouver Board Of Trade • Vancouver Merchants Exchange

GENERAL TESTING LABORATORIES

DIVISION: SUPERINTENDENCE COMPANY (CANADA) LTD

1001 EAST PENDER STREET VANCOUVER 6, B.C. CANADA
 PHONE (604) 254-1647 TELEX 04-507514 CABLE SUPERVISE



TO:

L.J. Manning & Associates Ltd.

CERTIFICATE OF ASSAY

No 7211-0626

DATE: 10-11-72

We hereby certify that the following are the results of assays on **Geochemical Samples**

Page 9

MARKED	COPPER	XX					XX	
	(Cu) PPM						OZ/ST GR/MT	OZ/ST GR/MT
L48N 52E	358							
L48N 54E	40							
L48N 56E	10							
L48N 58E	23							
L48N 60E	33							
L48N 62E	30							
L48N 64E	25							
L52N 10E	18							
L52N 12E NO SAMPLE								
L52N 14E	23							
L52N 16E	35							
L52N 18E NO SAMPLE								
L52N 20E NO SAMPLE								
L52N 22E	33							
L52N 24E	43							
L52N 26E	43							
L52N 28E	45							
L52N 30E	30							
L52N 32E	18							
L52N 34E	28							
L52N 36E	40							
L52N 38E	20							
L52N 40E	15							
L52N 42E	25							
L52N 44E	26							
L52N 46E	25							
L52N 48E	63							
L52N 50E	65							
L52N 52E	55							
L52N 54E	55							
L52N 56E	53							
L52N 58E	38							
L52N 60E	43							
L52N 62E	18							
L52N 64E	900							

NOTE: REJECTS RETAINED ONE MONTH. PULPS RETAINED THREE MONTHS. ON REQUEST PULPS AND REJECTS WILL BE STORED FOR A MAXIMUM OF ONE YEAR.

ALL REPORTS ARE THE CONFIDENTIAL PROPERTY OF CLIENTS. PUBLICATION OF STATEMENTS, CONCLUSIONS OR EXTRACTS FROM OR REGARDING OUR REPORTS IS NOT PERMITTED WITHOUT OUR WRITTEN APPROVAL. ANY LIABILITY ATTACHED THERETO IS LIMITED TO THE FEE CHARGED.

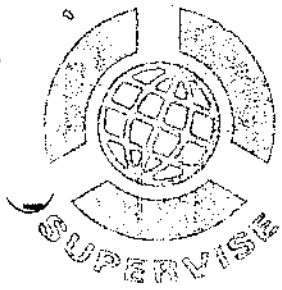
Cont'd ...

H. Sharples
H. Sharples
 PROVINCIAL ASSAYER

COPY

Analytical and Consulting Chemists, Bulk Cargo Specialists, Surveyors, Inspectors, Samplers, Weighers

MEMBER American Society For Testing Materials • The American Oil Chemists' Society • Canadian Testing Association
 REFERRED AND/OR OFFICIAL CHEMISTS FOR Vancouver Merchants Exchange • National Institute Of Oilseed Products • The American Oil Chemists' Society
 OFFICIAL INSPECTORS FOR Vancouver Board Of Trade • Vancouver Merchants Exchange



GENERAL TESTING LABORATORIES

DIVISION SUPERINTENDENCE COMPANY (CANADA) LTD

1001 EAST PENDER STREET, VANCOUVER 6, B.C., CANADA
 PHONE (604) 254-1647 TELEX 94-507514 CABLE SUPERVISE

TO:

L.J. Manning & Associates Ltd.

CERTIFICATE OF ASSAY

No. **7211-0626** DATE: **10-11-72**

We hereby certify that the following are the results of assays on: **Geochemical Samples**

Page 10

MARKED	COPPER						
	(Cu) PPM					OZ/ST GR/MT	OZ/ST GR/MT
L56N 10E NO SAMPLE							
L56N 12E	48						
L56N 14E	48						
L56N 16E NO SAMPLE							
L56N 18E NO SAMPLE							
L56N 20E	45						
L56N 22E	55						
L56N 24E	33						
L56N 26E	53						
L56N 28E	15						
L56N 30E	30						
L56N 32E	35						
L56N 34E	45						
L56N 36E	8						
L56N 38E	28						
L56N 40E	470						
L56N 42E	15						
L56N 44E	53						
L56N 46E	135						
L56N 48E	105						
L56N 50E	28						
L56N 52E	30						
L56N 54E	53						
L56N 56E	53						
L56N 58E	198						
L56N 60E	25						
L56N 62E	25						
L56N 64E	55						
L60N 10E NO SAMPLE							
L60N 12E	140						
L60N 14E	25						
L60N 16E	13						
L60N 18E	23						
L60N 20E	30						
L60N 22E NO SAMPLE							

NOTE: REJECTS RETAINED ONE MONTH. PULPS RETAINED THREE MONTHS. ON REQUEST PULPS AND REJECTS WILL BE STORED FOR A MAXIMUM OF ONE YEAR.

ALL REPORTS ARE THE CONFIDENTIAL PROPERTY OF CLIENTS. PUBLICATION OF STATEMENTS, CONCLUSION OR EXTRACTS FROM OR REGARDING OUR REPORTS IS NOT PERMITTED WITHOUT OUR WRITTEN APPROVAL ANY LIABILITY ATTACHED THERETO IS LIMITED TO THE FEE CHARGED

Cont'd ...

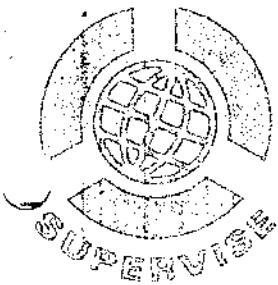
H. Sharples
H. Sharples

PROVINCIAL ASSAYER

COPY

Analytical and Consulting Chemists, Bulk Cargo Specialists, Surveyors, Inspectors, Samplers, Weighers

MEMBER American Society For Testing Materials • The American Oil Chemists' Society • Canadian Testing Association
 REFEREE AND/OR OFFICIAL CHEMISTS FOR Vancouver Merchant's Exchange • National Institute Of Oilseed Products • The American Oil Chemists' Society
 OFFICIAL WEIGHMASTERS FOR Vancouver Board Of Trade • Vancouver Merchant's Exchange



GENERAL TESTING LABORATORIES

DIVISION SUPERINTENDENCE COMPANY (CANADA) LTD

1001 EAST PENDER STREET, VANCOUVER 6, B.C., CANADA
 PHONE (604) 254-1647 TELEX 04-507514 CABLE SUPERVISE

TO:

L.J. Manning & Associates Ltd.

CERTIFICATE OF ASSAY

No. **7211-0626** DATE: **10-11-72**

We hereby certify that the following are the results of assays on: **Geochemical Samples**

Page 11

MARKED	COPPER						COPPER	
	(Cu) PPM						OZ/ST GR/MT	OZ/ST GR/MT
L 60N 24E	25							
L60N 26E NO SAMPLE								
L60N 28E	25							
L60N 30E	20							
L60N 32E	9							
L60N 34E	23							
L60N 36E	30							
L60N 38E	33							
L60N 40E	18							
L60N 42E	45							
L60N 44E	43							
L60N 46E	35							
L60N 48E	28							
L60N 50E	125							
L60N 52E	48							
L60N 54E	83							
L60N 56E	30							
L60N 58E	75							
L60N 60E	20							
L60N 62E	15							
L60N 64E	183							
L64N 10E NO SAMPLE								
L64N 12E	8							
L64N 14E	5							
L64N 16E NO SAMPLE								
L64N 18E NO SAMPLE								
L64N 20E	240							
L64N 22E	33							
L64N 24E	15							
L64N 26E	50							
L64N 28E	15							
L64N 30E NO SAMPLE								
L64N 32E	10							
L64N 34E	15							
L64N 36E	23							

NOTE: REJECTS RETAINED ONE MONTH, PULPS RETAINED THREE MONTHS. ON REQUEST PULPS AND REJECTS WILL BE STORED FOR A MAXIMUM OF ONE YEAR.

ALL REPORTS ARE THE CONFIDENTIAL PROPERTY OF CLIENTS. PUBLICATION OF STATEMENTS, CONCLUSION OR EXTRACTS FROM OR REGARDING OUR REPORTS IS NOT PERMITTED WITHOUT OUR WRITTEN APPROVAL. ANY LIABILITY ATTACHED THERETO IS LIMITED TO THE FEE CHARGED.

Cont'd ...

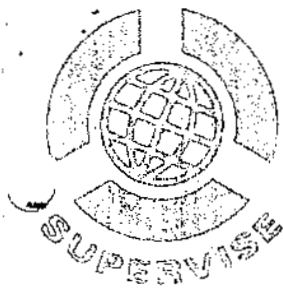
H. Shields
 H. Shields

PROVINCIAL ASSAYER

COPY

Analytical and Consulting Chemists, Bulk Cargo Specialists, Surveyors, Inspectors, Samplers, Weighers

MEMBER: American Society For Testing Materials • The American Oil Chemists' Society • Canadian Testing Association
 REFERRED AND/OR OFFICIAL CHEMISTS FOR: Vancouver Merchants Exchange • National Institute Of Oil Seed Products • The American Oil Chemists' Society
 OFFICIAL WEIGHMASTERS FOR: Vancouver Board Of Trade • Vancouver Merchants Exchange



GENERAL TESTING LABORATORIES

DIVISION, SUPERINTENDENCE COMPANY (CANADA) LTD

1001 EAST PENDER STREET, VANCOUVER 6, B. C., CANADA
 PHONE (604) 254-1647 TELEX 04-507514 CABLE SUPERVISE

TO:

L.J. Manning & Associates Ltd.

CERTIFICATE OF ASSAY

No: **7211-0626** DATE: **10-11-72**

We hereby certify that the following are the results of assays on: **Geochemical Samples**

Page 12

MARKED	COPPER							
	(Cu) PPM						OZ/ST GR/MT	OZ/ST GR/MT
L64N 38E	50							
L64N 40E	38							
L64N 42E	43							
L64N 44E	30							
L64N 46E	20							
L64N 48E	43							
L64N 50E	63							
L64N 52E	55							
L64N 54E	173							
L64N 56E	45							
L64N 58E	25							
L64N 60E	20							
L64N 62E	10							
L64N 64E	73							
L68N 10E	NO SAMPLE							
L68N 12E	NO SAMPLE							
L68N 14E	40							
L68N 16E	105							
L68N 18E	50							
L68N 20E	18							
L68N 22E	53							
L68N 24E	55							
L68N 26E	NO SAMPLE							
L68N 28E	13							
L68N 30E	43							
L68N 32E	43							
L68N 34E	93							
L68N 36E	13							
L68N 38E	23							
L68N 40E	13							
L68N 42E	15							
L68N 44E	25							
L68N 46E	28							
L68N 48E	45							
L68N 50E	58							

NOTE: REJECTS RETAINED ONE MONTH. PULPS RETAINED THREE MONTHS. ON REQUEST PULPS AND REJECTS WILL BE STORED FOR A MAXIMUM OF ONE YEAR.

ALL REPORTS ARE THE CONFIDENTIAL PROPERTY OF CLIENTS. PUBLICATION OF STATEMENTS, CONCLUSION OR EXTRACTS FROM OR REGARDING OUR REPORTS IS NOT PERMITTED WITHOUT OUR WRITTEN APPROVAL. ANY LIABILITY ATTACHED THERETO IS LIMITED TO THE FEE CHARGED.

Cont'd ...

H. Sharplea

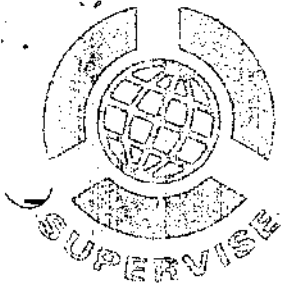
H. Sharplea

PROVINCIAL ASSAYER

COPY

Analytical and Consulting Chemists, Bulk Cargo Specialists, Surveyors, Inspectors, Samplers, Weighers

MEMBER American Society For Testing Materials • The American Oil Chemists' Society • Canadian Testing Association
 REFEREE AND/OR OFFICIAL CHEMISTS FOR: Vancouver Merchants Exchange • National Institute Of Oilseed Products • The American Oil Chemists' Society
 OFFICIAL WEIGHMASTERS FOR: Vancouver Board Of Trade • Vancouver Merchants Exchange



GENERAL TESTING LABORATORIES

DIVISION, SUPERINTENDENCE COMPANY (CANADA) LTD.

1001 EAST PENDER STREET, VANCOUVER 6, B.C. CANADA
 PHONE (604) 254-1647 TELEX 04-507514 CABLE SUPERVISE

TO:

L.J. Manning & Associates Ltd.

CERTIFICATE OF ASSAY

No. **7211-0626**

DATE: **10-11-72**

We hereby certify that the following are the results of assays on: **Geochemical Samples**

Page 13

MARKED	COPPER	XXXXXXXXXX	XXXXXXXXXX	XXXXXXXXXX	XXXXXXXXXX	XXXXXXXXXX	XXXXXXXXXX	XXXXXXXXXX
	(Cu) PPM							
							OZ / ST GR / MT	OZ / ST GR / MT
L68N 52E	23							
L68N 54E	45							
L68N 56E	25							
L68N 58E	28							
L68N 60E	63							
L68N 62E NO SAMPLE								
L68N 64E	18							
L72N 12E	78							
L72N 14E	10							
L72N 16E	20							
L72N 18E NO SAMPLE								
L72N 20E	30							
L72N 22E	138							
L72N 24E	18							
L72N 26E	18							
L72N 28E	20							
L72N 30E	10							
L72N 32E	98							
L72N 34E	35							
L72N 36E	50							
L72N 38E	33							
L72N 40E	13							
L72N 42E	68							
L72N 44E	5							
L72N 46E	79							
L72N 48E	18							
L72N 50E	10							
L72N 52E	98							
L72N 54E	28							
L72N 56E	35							
L72N 58E	5							
L72N 60E	8							
L72N 62E	40							
L72N 64E	55							
L76N 8E NO SAMPLE								

NOTE: REJECTS RETAINED ONE MONTH; PULPS RETAINED THREE MONTHS. ON REQUEST PULPS AND REJECTS WILL BE STORED FOR A MAXIMUM OF ONE YEAR.

Cont'd ...

ALL REPORTS ARE THE CONFIDENTIAL PROPERTY OF CLIENTS. PUBLICATION OF STATEMENTS, CONCLUSION OR EXTRACTS FROM OR REGARDING OUR REPORTS IS NOT PERMITTED WITHOUT OUR WRITTEN APPROVAL. ANY LIABILITY ATTACHED THERETO IS LIMITED TO THE FEE CHARGED

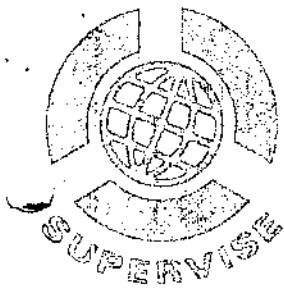
H. Sharples
H. Sharples

PROVINCIAL ASSAYER

COPY

Analytical and Consulting Chemists, Bulk Cargo Specialists, Surveyors, Inspectors, Samplers, Weighers

MEMBER, American Society For Testing Materials • The American Oil Chemists' Society • Canadian Testing Association
 REFEREE AND/OR OFFICIAL CHEMISTS FOR: Vancouver Merchants Exchange • National Institute Of Oilseed Products • The American Oil Chemists' Society
 OFFICIAL WEIGHTMASTERS FOR: Vancouver Board Of Trade • Vancouver Merchants Exchange



GENERAL TESTING LABORATORIES

DIVISION: SUPERINTENDENCE COMPANY (CANADA) LTD.

1001 EAST PENDER STREET, VANCOUVER 6 B.C. CANADA
PHONE (604) 254-1647 TELEX 94-507514 CABLE SUPERVISE

TO:

L.J. Manning & Associates Ltd.

CERTIFICATE OF ASSAY

No. **7211-0626** DATE: **10-11-72**

We hereby certify that the following are the results of assays on: **Geochemical Samples**

Page 14

MARKED	COPPER						SILVER	
	(Cu) PPM						OZ/ST GR/MT	OZ/ST GR/MT
L76N 10E NO SAMPLE								
L76N 12E NO SAMPLE								
L76N 14E	110							
L76N 16E	13							
L76N 18E NO SAMPLE								
L76N 20E	25							
L76N 22E	38							
L76N 24E	6							
L76N 26E	28							
L76N 28E	20							
L76N 30E	8							
L76N 32E	110							
L76N 34E	16							
L76N 36E	45							
L76N 38E	13							
L76N 40E	40							
L76N 42E	40							
L76N 44E	110							
L76N 46E	58							
L76N 48E	48							
L76N 50E	8							
L76N 52E	30							
L76N 54E	48							
L76N 56E	28							
L76N 58E	5							
L76N 60E	65							
L76N 62E	120							
L76N 64E	23							
L80N 8E	28							
L80N 10E	10							
L80N 12E	45							
L80N 14E	58							
L80N 16E	40							
L80N 18E	63							
L80N 20E	10							

NOTE: REJECTS RETAINED ONE MONTH. PULPS RETAINED THREE MONTHS. ON REQUEST PULPS AND REJECTS WILL BE STORED FOR A MAXIMUM OF ONE YEAR.

ALL REPORTS ARE THE CONFIDENTIAL PROPERTY OF CLIENTS. PUBLICATION OF STATEMENTS, CONCLUSION OR EXTRACTS FROM OR REGARDING OUR REPORTS IS NOT PERMITTED WITHOUT OUR WRITTEN APPROVAL. ANY LIABILITY ATTACHED THERETO IS LIMITED TO THE FEE CHARGED.

Cont'd ...

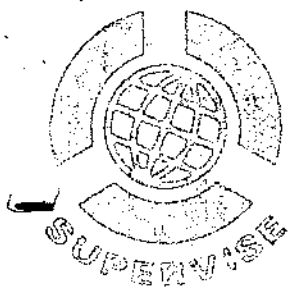
H. Sharplee
H. Sharplee

PROVINCIAL ASSAYER

COPY

Analytical and Consulting Chemists, Bulk Cargo Specialists, Surveyors, Inspectors, Samplers, Weighers

MEMBER: American Society For Testing Materials • The American Oil Chemists' Society • Canadian Testing Association
REFEREE AND/OR OFFICIAL CHEMISTS FOR: Vancouver Merchants Exchange • National Institute Of Oil Seed Products • The American Oil Chemists' Society
OFFICIAL WEIGHMASTERS FOR: Vancouver Board Of Trade • Vancouver Merchants Exchange



GENERAL TESTING LABORATORIES

DIVISION, SUPERINTENDENCE COMPANY (CANADA) LTD.

1001 EAST PENDER STREET, VANCOUVER 6, B.C., CANADA
 PHONE (604) 254-1647 TELEX 04-507514 CABLE SUPERVISE

TO:

L.J. Manning & Associates Ltd.

CERTIFICATE OF ASSAY

No. **7211-0626** DATE **10-11-72**

We hereby certify that the following are the results of assays on **Geochemical Samples**

Page 15

MARKED	COPPER						REMARKS	
	(Cu) FPM						OZ/ST GR/MT	OZ/ST GR/MT
L80N 22E	18							
L80N 24E	NO SAMPLE							
L80N 26E	NO SAMPLE							
L80N 28E	NO SAMPLE							
L80N 30E	NO SAMPLE							
L80N 32E	323							
L80N 34E	293							
L80N 36E	318							
L80N 38E	43							
L80N 40E	20							
L80N 42E	15							
L80N 44E	23							
L80N 46E	115							
L80N 48E	38							
L80N 50E	28							
L80N 52E	65							
L80N 54E	43							
L80N 56E	135							
L80N 58E	33							
L80N 60E	43							
L80N 62E	35							
L80N 64E	53							
L84N 40E	35							
L84N 42E	60							
L84N 44E	73							
L84N 46E	55							
L84N 48E	55							
L84N 50E	28							
L84N 52E	53							
L84N 54E	50							

NOTE: REJECTS RETAINED ONE MONTH. PULPS RETAINED THREE MONTHS. ON REQUEST PULPS AND REJECTS WILL BE STORED FOR A MAXIMUM OF ONE YEAR.

ALL REPORTS ARE THE CONFIDENTIAL PROPERTY OF CLIENTS. PUBLICATION OF STATEMENTS, CONCLUSION OR EXTRACTS FROM OR REGARDING OUR REPORTS IS NOT PERMITTED WITHOUT OUR WRITTEN APPROVAL. ANY LIABILITY ATTACHED THERETO IS LIMITED TO THE FEE CHARGED.

Cont'd ...

H. Sharples
H. Sharples PROVINCIAL ASSAYER

Analytical and Consulting Chemists, Bulk Cargo Specialists, Surveyors, Inspectors, Samplers, Weighers

MEMBER: American Society For Testing Materials • The American Oil Chemists' Society • Canadian Testing Association
 REFEREE AND/OR OFFICIAL CHEMISTS FOR: Vancouver Merchants Exchange • National Institute Of Oil Seed Products • The American Oil Chemists' Society
 OFFICIAL WEIGHMASTERS FOR: Vancouver Board Of Trade • Vancouver Merchants Exchange

COPY



GENERAL TESTING LABORATORIES

DIVISION SUPERINTENDENCE COMPANY (CANADA) LTD

1001 EAST PENDER STREET, VANCOUVER 6, B.C., CANADA
 PHONE (604) 254-1647 TELEX 04-507514 CABLE SUPERVISE

TO:

L.J. Manning & Associates Ltd.,

CERTIFICATE OF ASSAY

No. **7211-0626** DATE: **10-11-72**

We hereby certify that the following are the results of assays on: **Geochemical Samples**

Page 16

MARKED	COPPER	XXXXXXXXXXXXXXXXXXXX	XXXXXXXXXXXXXXXXXXXX	XXXXXXXXXXXXXXXXXXXX	XXXXXXXXXXXXXXXXXXXX	XXXXXXXXXXXXXXXXXXXX	XXXXXXXXXXXXXXXXXXXX	XXXXXXXXXXXXXXXXXXXX
	(Cu) PPM							
L84N 56E	123							
L84N 58E	200							
L84N 60E	50							
L84N 62E	50							
L84N 64E	38							
L88N 40E	63							
L88N 42E	48							
L88N 44E	30							
L88N 46E	25							
L88N 48E	43							
L88N 50E	20							
L88N 52E	63							
L88N 54E	30							
L88N 56E	40							
L88N 58E	15							
L88N 60E	68							
Decomposition:		HOT HNO ₃ , HClO ₄						
Procedure:		A.A.						

NOTE: REJECTS RETAINED ONE MONTH. PULPS RETAINED THREE MONTHS. ON REQUEST PULPS AND REJECTS WILL BE STORED FOR A MAXIMUM OF ONE YEAR.

ALL REPORTS ARE THE CONFIDENTIAL PROPERTY OF CLIENTS. PUBLICATION OF STATEMENTS, CONCLUSION OR EXTRACTS FROM OR REGARDING OUR REPORTS IS NOT PERMITTED WITHOUT OUR WRITTEN APPROVAL. ANY LIABILITY ATTACHED THERETO IS LIMITED TO THE FEE CHARGED.

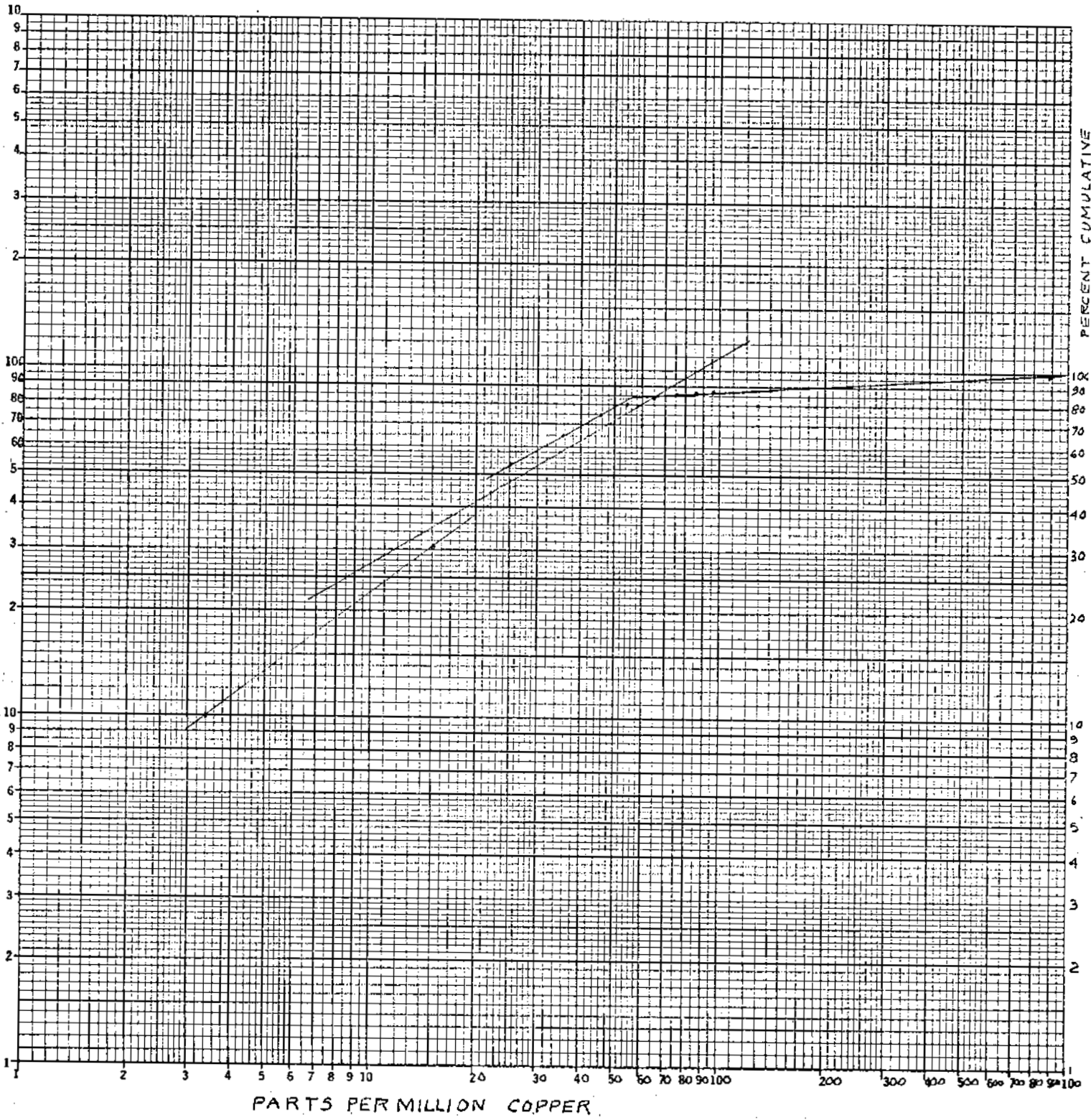
H. Sharplea
H. Sharplea PROVINCIAL ASSAYER

COPY HS/ek

Analytical and Consulting Chemists. Bulk Cargo Specialists, Surveyors, Inspectors, Samplers, Weighers

MEMBER American Society For Testing Materials • The American Oil Chemists Society • Canadian Testing Association
 REFEREE AND/OR OFFICIAL CHEMISTS FOR Vancouver Merchants Exchange • National Institute Of Oilseed Products • The American Oil Chemists' Society
 OFFICIAL WEIGHMASTERS FOR Vancouver Board Of Trade • Vancouver Merchants Exchange

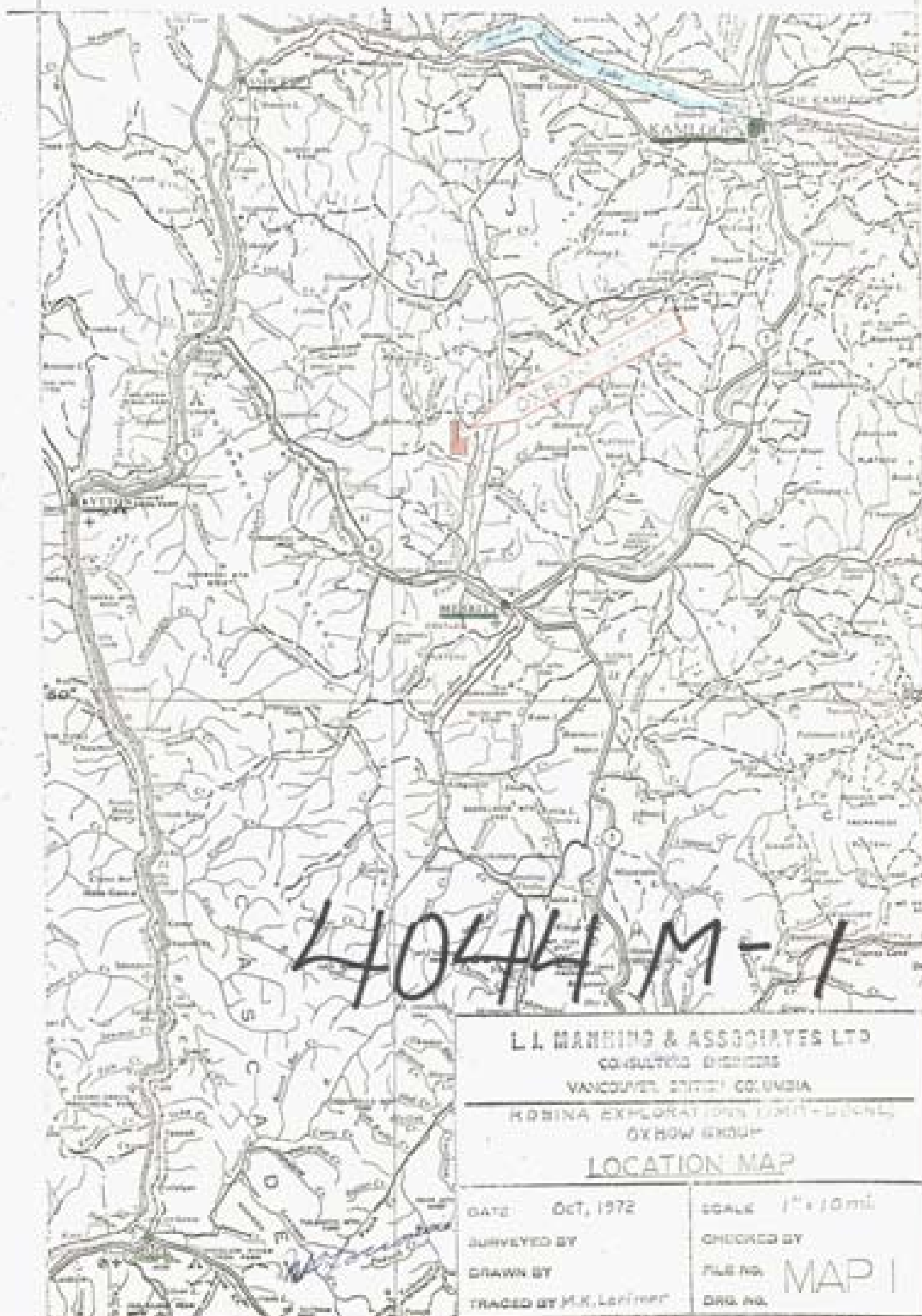
APPENDIX C



GB-120
Logarithmic, 3 X 3 Cycles
MADE IN CANADA

C.C.E.S.
MICROGRAPH

W. L. ...



4044 M-1

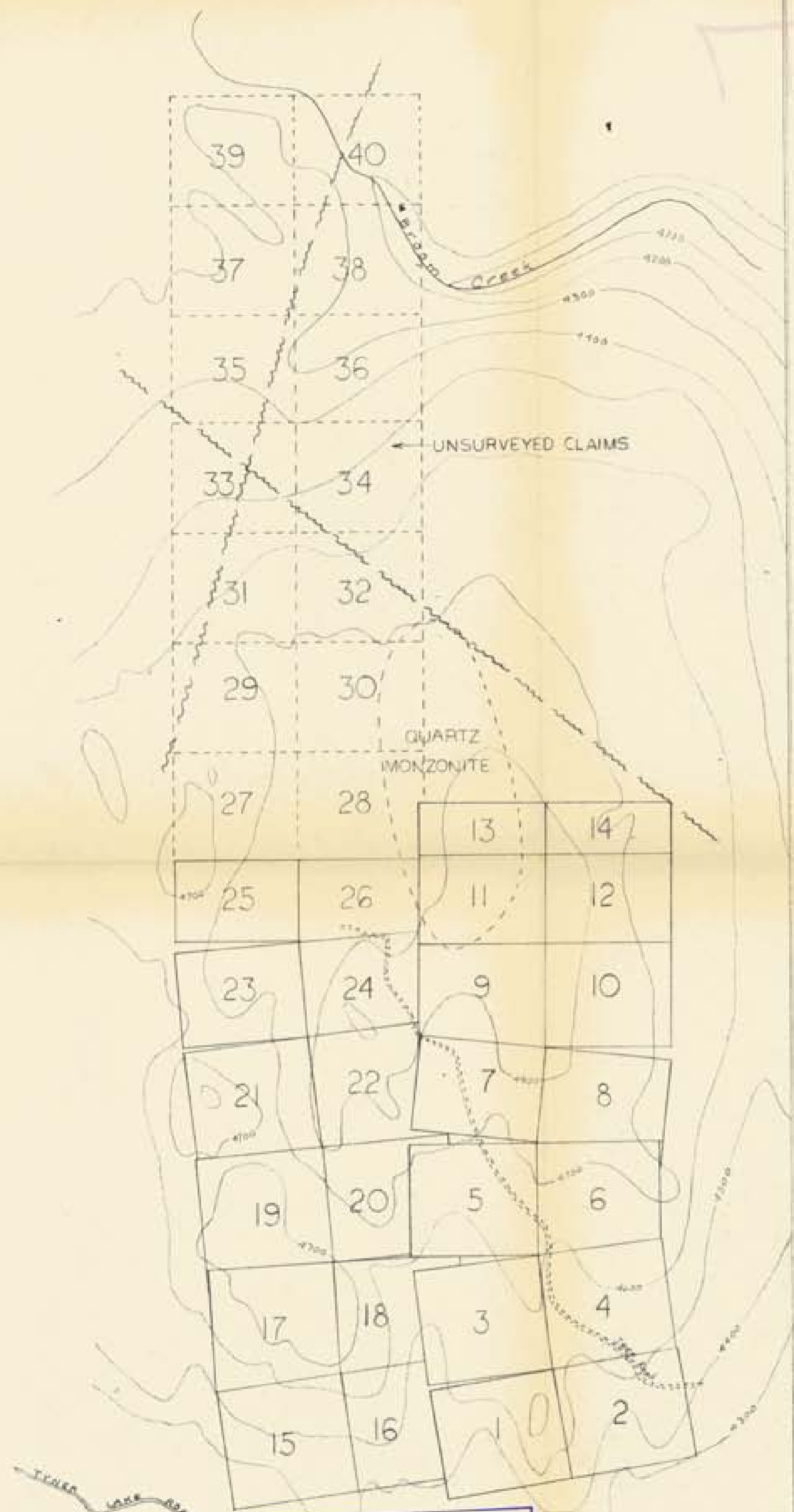
L.L. MANNING & ASSOCIATES LTD
CONSULTING ENGINEERS
VANCOUVER, BRITISH COLUMBIA
ROBINA EXPLORATIONS LIMITED - MEMBER
OF XERO GROUP

LOCATION MAP

DATE: Oct, 1972
SURVEYED BY
DRAWN BY
TRACED BY P.K. LARIMER

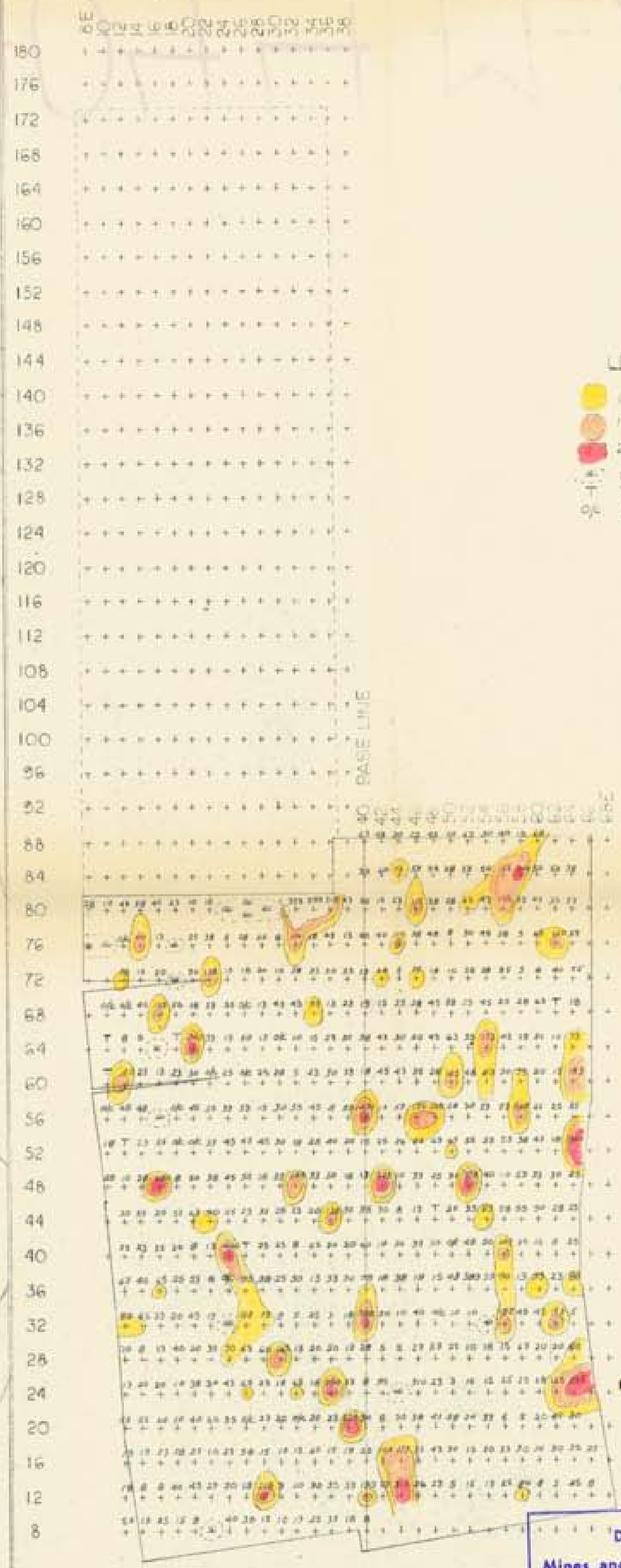
SCALE 1" = 10 mi
CHECKED BY
FILE NO. MAP 1
DRG. NO.

Department of
Mines and Petroleum Resources
ASSESSMENT REPORT
NO. **4044** MAP **#1**



Department of
Mines and Petroleum Resources
ASSESSMENT REPORT
NO. 4044 MAP #2

MAP 2
PROPERTY
Scale: 1" = 1000'



MAP 3
GEOCHEMISTRY
Scale: 1" = 1000'

Department of
Mines and Petroleum Resources
ASSESSMENT REPORT
NO. 4044 MAP #3

GEOLOGY: K.E. Northcote
MAGNETIC INTERPRETATION: R.O. Crosby
CONTOURS: Mamit Lake Sheet 3217W
CLAIMS & ROADS: Chain and compass survey

ROBINA EXPLORATIONS LTD (N.P.)
OXBOW GROUP
Drawn: M.K. Larimer Nov 72

4044 M-2

L. MANNING & ASSOCIATES LTD.