

GEOLOGICAL-GEOCHEMICAL-GEOPHYSICAL REPORT

CLAIMS: Snolly 11-23 ^{901/10E}
Record For. 2780720 - 2780760

LOCATION: 17 miles west of Kamloops,
2 miles southeast Cherry Creek

Author: W.G. Timmins, F.Eng.
Supervisor: W.G. Timmins, F.Eng.

Coast Interior Ventures Ltd.

Work Done from April 1.- May 15, 1972

GEO-SURVEYS CONSULTANTS LTD. (INC.)
Mining & Exploration & Engineering
Suite 211-275 Howe St., Vancouver B.C. V6C 2K6, Canada
Suite 208-160 Bay St., Toronto 1, Ontario

4055



4055

COAST INTERIOR VENTURES LIMITED (N.P.L.)

GEOMAGNETOMETER - GEOLOGICAL & SURFACE PROSPECTING

GEOCHEMICAL SURVEYS

Kamloops Mining Division, B.C.

W. G. Timmins, P. Eng.

Vancouver, B.C.

May 15th, 1972.

Department of
Mines and Petroleum Resources
ASSESSMENT REPORT

NO. 4055 MAP

TABLE OF CONTENTS

Property, Location, Access	page 1
History	3
Regional Geology	3
Geology of the Property	3
Mineralization of the Area	4
Geomagnetometer Survey	4
Geological - Surface Prospecting Program	5
Geochemical Survey	6
Conclusions and Recommendations	9

MAPS

- #1 Geochemical & Geological Map
- #2 Magnetometer Survey

Coast Interior Ventures Ltd. (N.P.L.),
626 West Pender Street,
Vancouver, British Columbia.

Gentlemen:

The following report describes results obtained from geomagnetic, geological and surface prospecting and geochemical soil sampling programs recently completed on your property located near Kamloops, British Columbia.

Assessment is made of such results and recommendations are provided for further exploration.

The property is located in a currently active exploration region with known copper deposits, sparked recently by encouraging results announced by Afton Mines Limited, and Leemac Mines Limited.

PROPERTY, LOCATION, ACCESS

The Coast Interior holdings are located approximately 8 miles southeast of Cherry Creek station

which is situated on the Canadian Pacific Railway about 13 miles west of the city of Kamloops, British Columbia.

The city of Kamloops is serviced by the Trans - Canada Highway, Canadian National Railway, Canadian Pacific Railway, and daily service by Pacific Western Airlines from Vancouver or Calgary.

The claim group staddles Cherry Creek and is accessible via secondary roads extending south from Cherry Creek station on the Trans - Canada Highway. The property consists of a total of 15 contiguous mineral claims as listed below:

<u>Claim Name</u>	<u>Tag Number</u>
Shelly 11 - 25	278072M - 278086M

The topography is rolling with some steep gorges, semi - arid, and relief varies from approximately 2500 feet A.S.L. to 3500 feet A.S.L. Forest cover is quite dense.

HISTORY

There is no known history of work on the property prior to the surveys recently completed by Coast Interior Ventures Limited during March and April 1972.

REGIONAL GEOLOGY

The geology of the area is well described in Geological Survey of Canada, memoir 249 by W. E. Cockfield. In general, the area is underlain by rocks of the Triassic Nicola Group volcanics which in turn is overlain by Kamloops Group volcanics. The Nicola Group is intruded by the Coast Intrusives consisting mainly of granodiorite and quartz - diorite and by the Iron Mask Batholith, consisting mainly of syenite, monzonite, diorite and gabbro.

GEOLOGY OF THE PROPERTY

The property is underlain by rocks of the Nicola Group, which consist mainly of andesite, basalt, agglomerate, breccia and tuff with minor argillite, limestone and conglomerate.

The volcanics vary from fine - grained to coarsely porphyritic and are usually a green or greenish - grey colour.

MINERALIZATION IN THE AREA

Various types of mineral deposits have been discovered in the area, including gold and silver, lead and zinc, copper mercury, tungsten and iron.

Numerous veins and disseminations of copper minerals have been found in the rocks of the Nicola Group in widely scattered locations including the Edith Hill area to the east and the Meadow Creek area to the south of the subject property. Copper deposits are also abundant in and around the Iron Mask Batholith occurring as veins, impregnations in the country rocks and as stockworks. They are found from Separation Lake to Cherry Bluff on the west side and from Edith Lake to Sugarload Hill on the eastern side.

GEOMAGNETOMETER SURVEY

The geomagnetic survey was performed utilizing a Sharpe MF-1 Fluxgate magnetometer (specifications at back of report).

Field Control - Control was established through a north - south oriented grid at 400 foot separations. Total line miles established is 22.16 miles including 1.16 miles of baseline. Stations were established each 100 foot intervals over grid. A total of 1110 magnetic stations were established.

Results of Geomagnetic Survey - The surveyed area is relatively flat geomagnetically with background of about 600 gammas determined through inspection except for a small anomalous magnetic low located on line 27E about 200 feet south of the baseline. The peak low value is -240 gammas, a total difference of 840 gammas. The above noted magnetic features are directly associated with a rock outcrop zone consisting of granodiorite.

GEOLOGICAL - SURFACE PROSPECTING PROGRAM

Control - Tie-in locations were established utilizing existing control grid.

Field Procedure - All grid lines were walked using professional assistance and examination made for rock outcrop.

Results - Good rock exposure occurs in the western half of the property, however the eastern half is overburden covered.

Examination has revealed that the rock types underlying the western half of the property are andesitic volcanics belonging to the Triassic Nicola Group.

These rocks have been intruded by Coast Intrusive granodiorites, mapped along Cherry Creek between lines 27E, 30E, at, and north of the baseline.

Several quartz veins have intruded both the volcanics and the granodiorites notably along the Cherry Creek gorge and along line 0 + 00 north of the baseline.

GEOCHEMICAL SURVEY

Field Control - Control for location of soil samples taken was established through utilization of grid cut for geomagnetic, geological and surface prospecting programs.

Field Procedure - Employing normal soil auger equipment, samples of soil were taken each 100 feet from the "B" horizon located directly below the topmost or humus horizon.

No impervious clay horizons were noted in area covered. Sample depth ranged from 3 to 10 inches below surface, averaging 5 inches.

Laboratory Procedure - All samples were dried then passed through a -80 mesh nylon screen to eliminate possible humus contamination. Half gram portions were then subject to a hot aqua regia bath. Copper extraction was through use of hot Hcl acid. Copper determinations were by atomic absorption expressed in Parts Per Million (PPM) in the Vancouver Laboratories of Bondar Clegg & Co. Limited.

Results of Survey - Base level of copper in soils throughout surveyed area is numerically 35 PPM through means of inspection. Numerically 105 PPM or three times background is considered anomalous threshold.

Five zones representing areas of significant geochemical increment indicating concentration of copper were detected and are labelled "A", "B", "C", "D" and "E".

The salient geochemical feature is anomaly "E" located in the northeast protion of the Coast Interior Ventures property. This zone is 700 feet in a northeast - southwest direction along line 27E. Average response is

145 PPM copper or over four times normal background. This anomaly is in the area underlain by volcanics intruded by granodiorite with the occurrence of quartz veins, and is likely associated with the intrusive.

Anomaly "A" located in the northeastern portion of area surveyed, in 2800 feet in length in a northwest direction, 100 feet in width, and open for extension off of property limits. Average response is 129 PPM copper or about 3.6 times normal background.

The centre of "B" anomaly is located on line 15E, 1800 feet north of the baseline in the northeastern portion of the Coast Interior Ventures property. Dimensions are about 1000 feet by 200 feet, while response is 102 PPM copper or 3 times background.

Anomaly "C" on lines 27E, 30E, about 1700 feet north, is about 400 feet by 200 feet and extends off the property. Response is about 100 PPM copper or 3 times background.

Anomaly "D" is located in the extreme northeast portion of the property. This anomaly is narrow about 800 feet in length extending off the property in both directions. Response is about 3 times background.

CONCLUSIONS AND RECOMMENDATIONS

Reconnaissance exploration activities consisting of geomagnetic coverage, geological - surface prospecting, and geochemical soil sampling programs, were recently completed on the 15 contiguous mineral claims of Coast Interior Ventures Limited (N.P.L.). The Coast Interior holdings are located in the Kamloops Mining Division about 4 miles southwest of the much publicized Afton claim group on which current drilling is increasing copper tonnages.

Magnetics are generally flat except for a small magnetic low which correlates with a granodiorite outcrop.

Geologically, the property is underlain by Nicola series andesitic volcanics intruded by Coast Intrusive granodiorites. These intrusive rocks have been mapped along Cherry Creek, in the central portion of the property. Several quartz veins intrude both the granodiorite and volcanics.

Five geochemical anomalous zones each representative of area of copper concentration occur within the surveyed area. Anomaly "E" is 700 feet long and occurs over a

granodiorite - andesite contact zone intruded by quartz veins. The geochemical response is about 4 times background.

"A" anomaly is 2800 feet long, open for extension off the property, 100 feet in width and has response of 3.6 times background, while "B" anomaly has dimensions 1000 feet by 200 feet and a copper response of 3 times background.

Anomaly "C" has a response of about 3 times background with dimensions of 400 feet x 200 feet extending off the property.

Anomaly "D" has response of 3 times background and extends off the property in both directions. Anomalies "A", "B", "C" and "D" are underlain by andesitic volcanics.

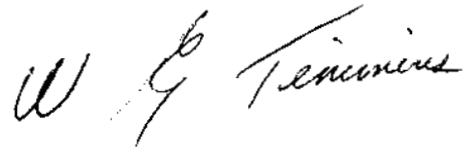
In view of positive results of reconnaissance surveys conducted on the subject Coast Interior Ventures property, further work is warranted to test copper potential of the geochemical anomalies and in particular the contact area and quartz veins underlying geochemical anomaly "E".

A program of trenching and sampling is recommended be done with trenches emplaced at the following locations:

Trench 1	28 + 50E, 8 + 00N
Trench 2	24 + 00E, 22 + 50N
Trench 3	28 + 00E, 36 + 00N

Estimated cost of this program is \$10,000.00.
Further work in the form of diamond drilling will be
contingent on results of the above recommended program.

Respectfully submitted,



W. G. Timmins, P. Eng.

DECLARATION

The following is a bona fide list of persons employed in the field program of linecutting, magnetometer, geological, prospecting and geochemical surveys, completed on the property of Coast Interior Ventures Limited (KPL) Kamloops Mining Division, British Columbia.

<u>Persons Employed</u>	<u>Fees Paid</u>	<u>Dates Worked</u>
Alex Clark - supervisor 647 Andover Place West Vancouver, B.C.	3600.00	April 1-21/72
Victor Adair Box 440 Revelstoke	400.00	April 1-21/72
Brent Abernothy Chilliwack, B.C.	400.00	April 1-21/72
Robert Daniels 1987 Beach Avenue Vancouver, B.C.	400.00	April 1-21/72
W. G. Timmins - engineering supervisor 909 Runnymede Avenue Coquitlam, B.C.	300.00	April - May/72
Total fees paid	<u>\$2,100.00</u>	

Declared before me at the City
of Vancouver, in the
Province of British Columbia, this 28
day of December 1972, A.D.

W. G. Timmins

Jan Turner
A Commissioner for taking Affidavits within British Columbia or
A Notary Public in and for the Province of British Columbia
GEO-SURVEYS CONSULTANTS LIMITED
Submitting Recorder

Field Costs

Food	\$450.00
Accommodation	750.00
Transportation, fuel, vehicle rental	410.00
Instrument Rental	250.00
	<hr/>
Total field Costs	\$1,860.00

Geochemical Analysis for Copper

Bondar - Clegg & Company Ltd.	\$1,300.00
Stenographic, clerical, drafting, office upkeep, etc.	200.00
	<hr/>
Total expenditures	\$5,460.00

Declared before me at the City
of Vancouver, in the
Province of British Columbia, this 28
day of December 1972, A.D.

Jean Guenon
A Commissioner for taking Affidavits within British Columbia or
A Notary Public in and for the Province of British Columbia.

Sub-mining Recorder

W G Timmins

CERTIFICATE

I, WILLIAM G. TIMMINS, of the Province of British Columbia, do certify that:

1. I am a geologist having been practising my profession continuously for eleven years and maintain an office at Ste. 214 - 475 Howe Street, Vancouver, B.C.
2. I am a graduate of the Provincial Institute of Mining, Haileybury, Ontario and have attended Michigan Technological University, Houghton, Michigan.
3. I am a member of the Association of Professional Engineers of British Columbia.
4. I have no interest, direct or indirect in the property, or securities of Coast Interior Ventures Limited (N.P.L.) nor do I expect to receive any such interest.
5. This report has been prepared by myself and is based on supervision of the exploration program.

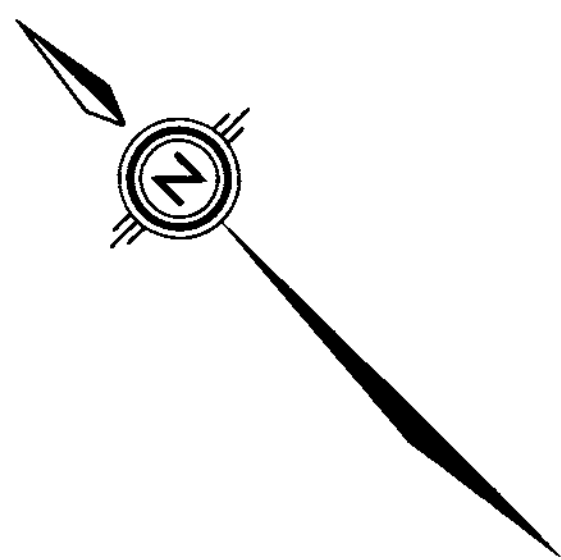
This report may be used in the prospectus of the Company and amendments thereto.

DATED at Vancouver, British Columbia, this 15th day of May, 1972.

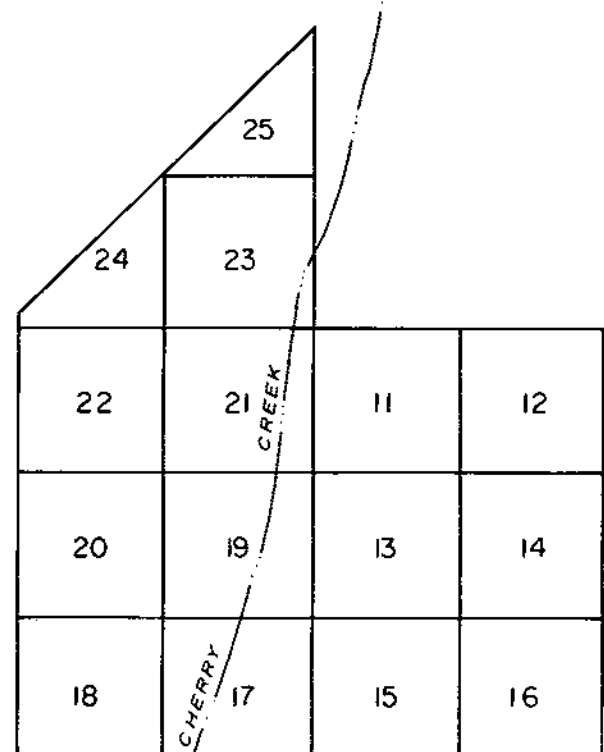
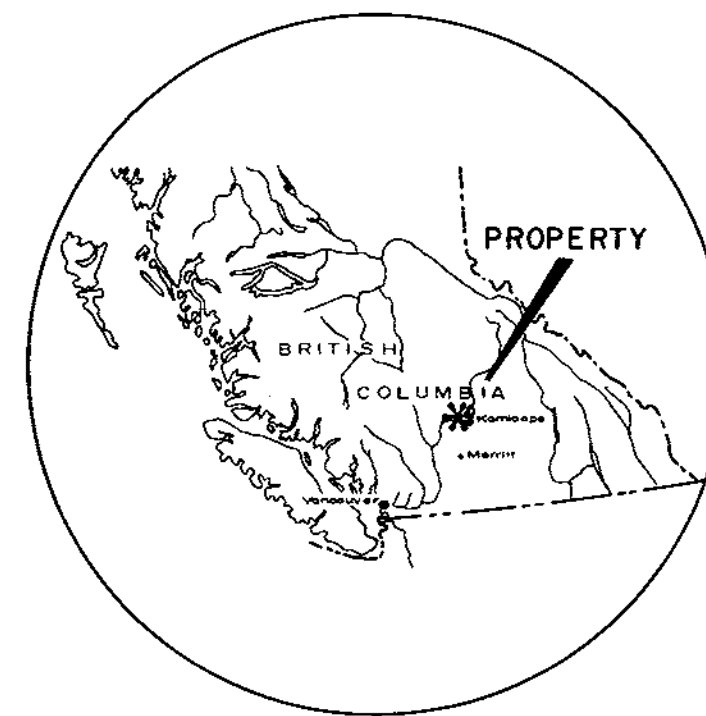
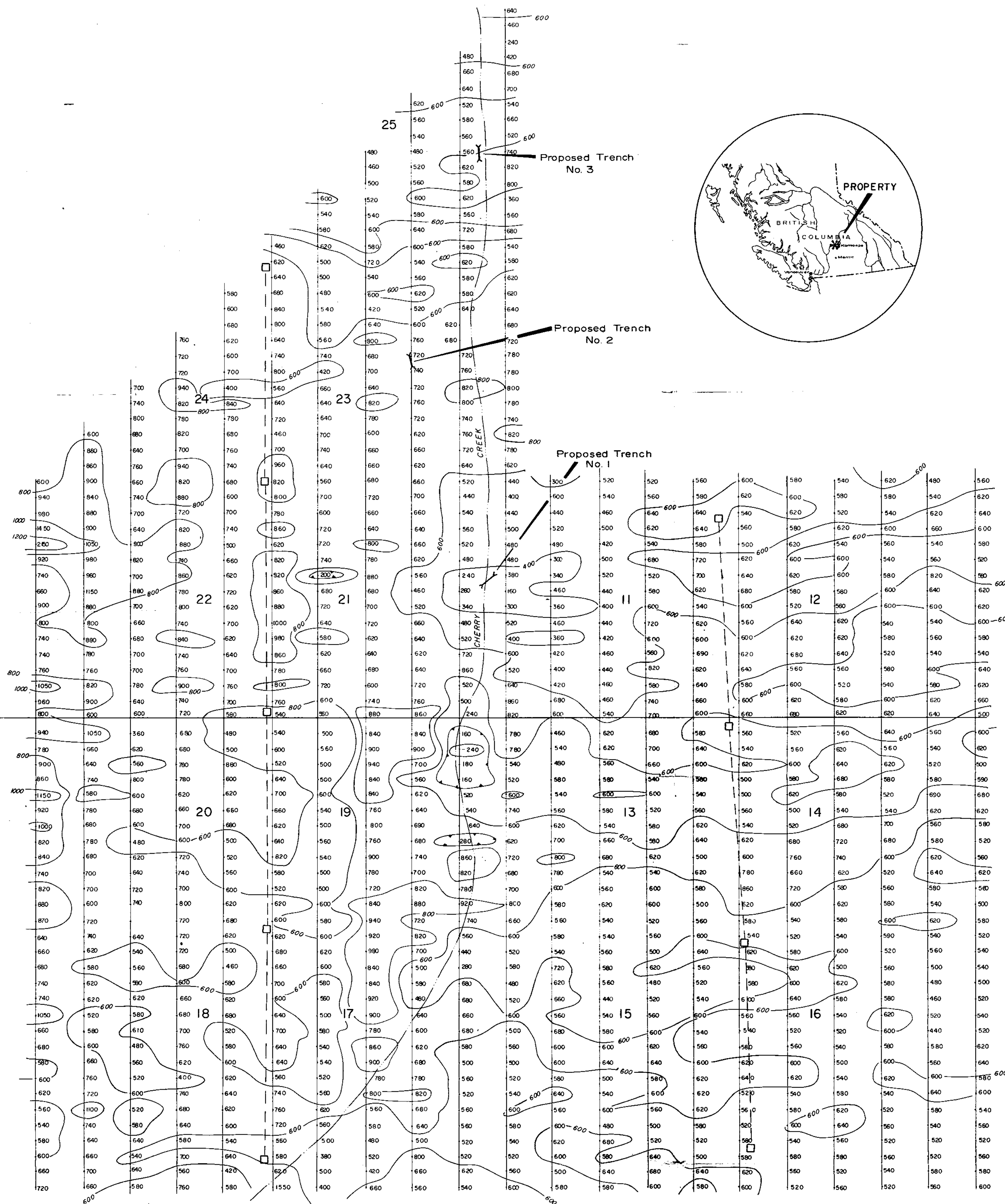
W. G. Timmins

W. G. Timmins, P. Eng.

00 3E 6E 9E 12E 15E 18E 21E 24E 27E 30E 33E 36E 39E 42E 45E 48E 51E 54E 57E 60E



44 N
40 N
36 N
32 N
28 N
24 N
20 N
16 N
12 N
8 N
4 N
0+00 BASE LINE
4 S
8 S
12 S
16 S
20 S
24 S
28 S



SHELLY CLAIMS

LEGEND

620 Magnetometer Reading in gammas

800 Magnetometer Contour - interval 200 gammas.

Department of
Mines and Petroleum Resources
ACCESSORY REPORT
NO. 4055 MAP #2

COAST INTERIOR VENTURES LTD.

SHELLY CLAIM GROUP

MAGNETOMETER SURVEY

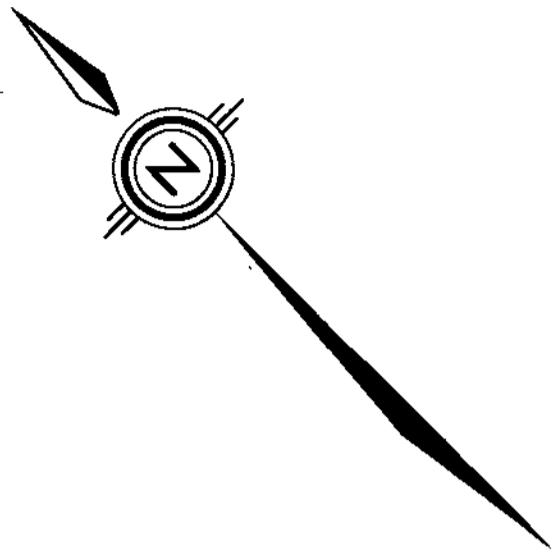
KAMLOOPS MINING DIVISION, B.C.

SCALE IN FEET
400 200 0 400 800 1200

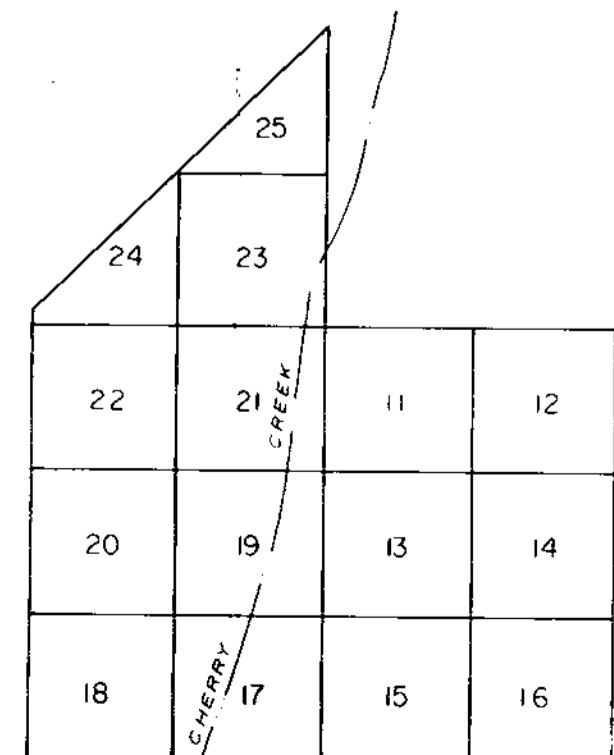
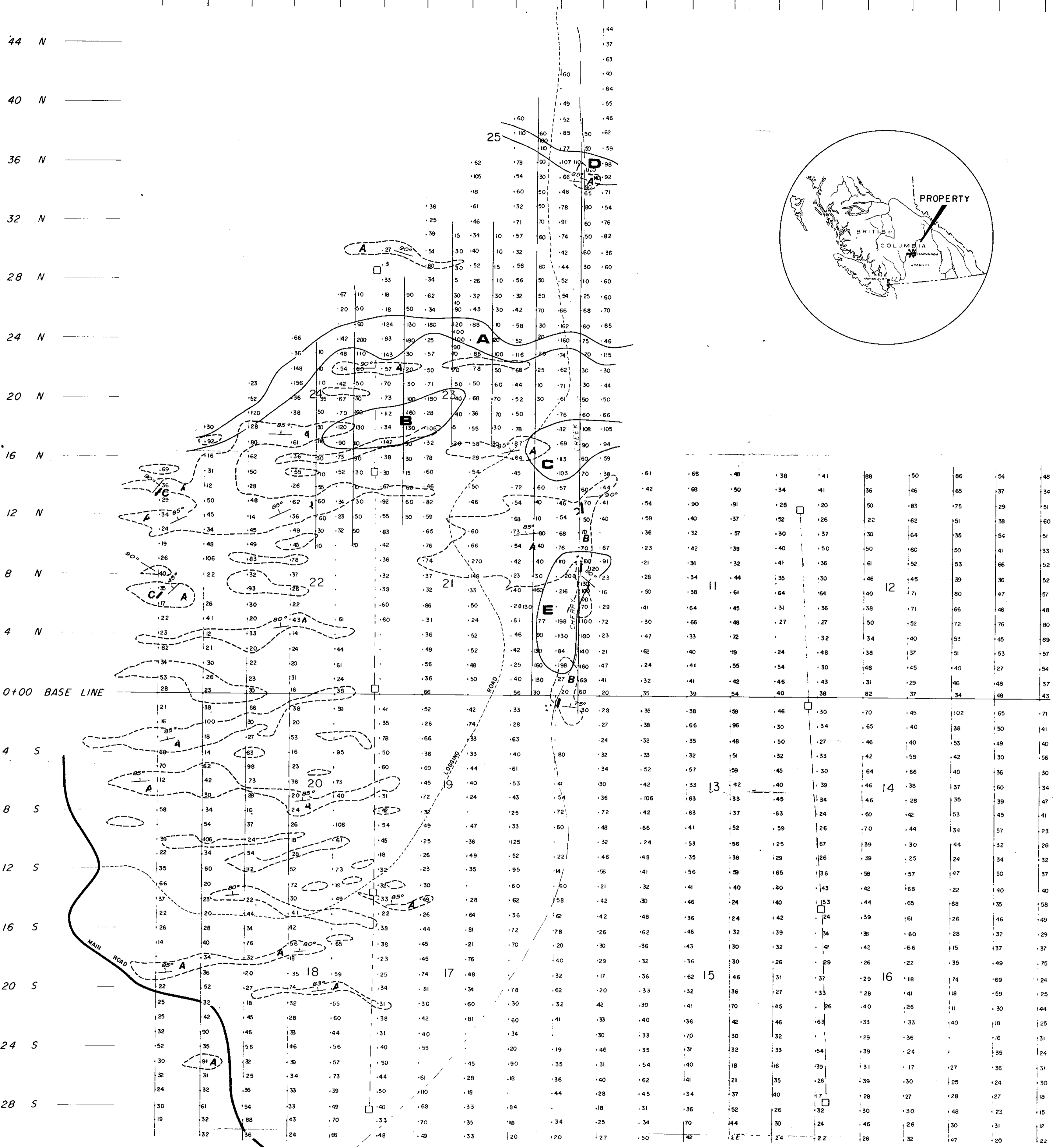
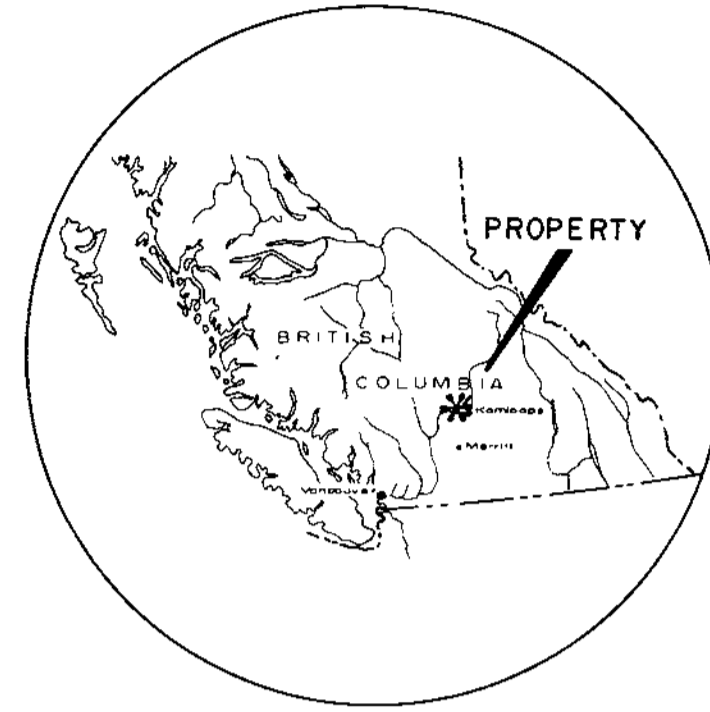
SURVEY BY GEOSURVEYS CONSULTANTS LTD.
TORONTO VANCOUVER

W. S. Tomlinson

00 3E 6E 9E 12E 15E 18E 21E 24E 27E 30E 33E 36E 39E 42E 45E 48E 51E 54E 57E 60E



44 N
40 N
36 N
32 N
28 N
24 N
20 N
16 N
12 N
8 N
4 N
0+00 BASE LINE
4 S
8 S
12 S
16 S
20 S
24 S
28 S



SHELLY CLAIMS

4055

Department of
Mines and Petroleum Resources
ASSESSMENT REPORT
NO. 4055 MAP #1

M-1

- LEGEND
- OUTCROP
 - 4 NICOLA GROUP VOLCANICS
Greenstone, Andesite, Basalt
 - E COAST INTRUSIONS
Granite, Granodiorite
 - C ALTERED ZONE
Quartz
 - ROAD
 - ~ CREEK
 - A-120 ANOMALY (Copper in PPM.)

COAST INTERIOR VENTURES LTD.
SHELLY CLAIM GROUP
GEOCHEMICAL & GEOLOGICAL MAP
KAMLOOPS MINING DIVISION, B.C.

SCALE IN FEET
400 200 0 400 800 1200

SURVEY BY GEOSURVEYS CONSULTANTS LTD
TORONTO VANCOUVER

W. J. [Signature]