

4067

GEOLOGICAL SURVEY

HY 1-21 CLAIMS

KAMLOOPS M.D.

92I/11E

121-51 NE

29-9-72 : 4-10-72

Department of
Mines and Petroleum Resources
ASSESSMENT REPORT
NO. 4067 MAP

For:

T.V.S. INDUSTRIES LTD.

60 West 7th. Avenue
Vancouver 10, B.C.

By:

ALLEN GEOLOGICAL ENGINEERING LTD.

601 - 325 Howe Street
Vancouver, B.C.

October 30, 1972.

CONTENTS

INTRODUCTION..... 1.
LOCATION AND ACCESSIBILITY..... 1.
PROPERTY..... 2.
TOPOGRAPHY..... 2.
GEOLOGICAL SURVEY..... 3.
CONCLUSIONS AND RECOMMENDATIONS..... 6.
REFERENCES

MAPS: #1 L - 1. Location Map
 #2 C - 2. Claims and Topography
 #3 G - 3. Geology

* * * * *

GEOLOGICAL SURVEY

HY 1 - 21 CLAIMS

KAMLOOPS M.D.

INTRODUCTION

The property was investigated by a magnetometer survey in January 1971, when a 400-foot by 100-foot grid was established over the claim area on Glossy Mountain.

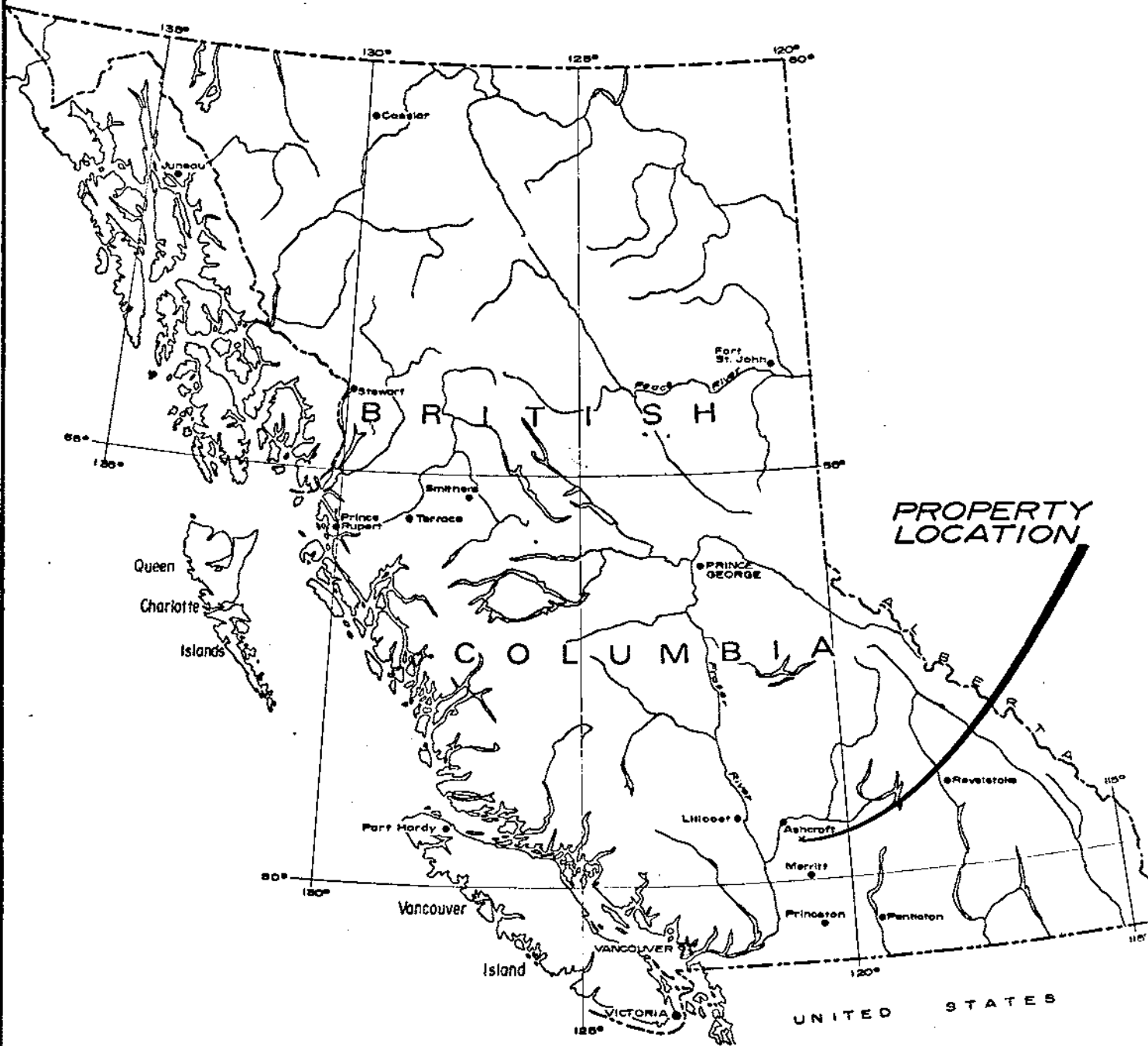
For the geological survey, the surveyed grid was used as control and the property was traversed at close intervals by the writer. The outcrop areas were mapped and specimens acquired of all observed rock types. The geology was mapped by the writer.

The survey was commenced on September 29th. and completed October 4th, 1972.

Cache Creek was used as a base and travel to and from the property was by 4-wheel-drive truck.

LOCATION AND ACCESSIBILITY

The property is located in south central British Columbia, 10 miles southeast of Ashcroft. The Bethlehem and Lornex mines are about 12 miles to the southeast. Access is via the Bethlehem-Highland Valley road $8\frac{1}{2}$ miles to a secondary road which is directed easterly onto the property.



Department of
 Mines and Petroleum Resources
 ASSESSMENT REPORT
 NO. **4067** MAP #1

T.V.S. INDUSTRIES LTD.
LOCATION MAP
 SCALE: 1" = 136 Mls.

Drawn by <i>AKA</i>	Date <i>OCT./72</i>	<i>Allen K. Allen</i>
Checked by	Org no. L-1	ALLEN GEOLOGICAL ENGINEERING LTD

This road terminates on the HY 8 claim about 1000 feet southwest of the peak of Glossy Mountain.

PROPERTY

The property is made up of 21 located adjoining mineral claims, located on Glosss Mountain and extending down the West slopes to the upper drainage area of Barnes Creek.

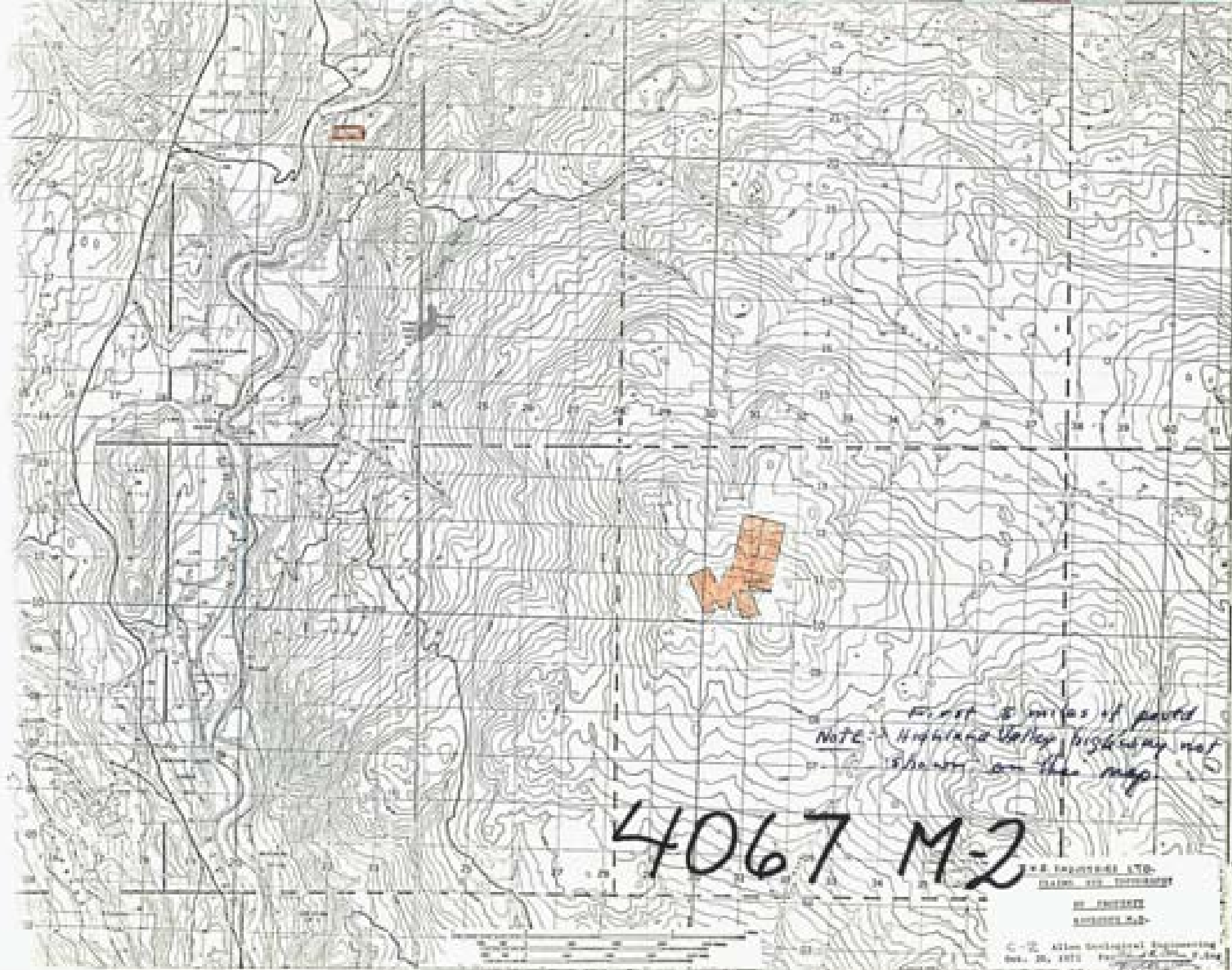
HY 1-21 Record Numbers, 86811 - 86831

All the posts have been examined by the writer and the claims are located in accordance with the requirements of the British Columbia Mineral Act.

TOPOGRAPHY

The claims are located on the top and west slopes of Glossy Mountain, one of the highest points in the Highland Valley area.

Except for several rocky ridges of limited extent on the north and east sides of the mountain, the slopes are gentle. There are open grassy areas on the south and west sides. Overburden is light, outcrops numerous, and there are scattered stands of pine with limited spruce, fir and deciduous trees including alder, cottonwood and birch. Small, intermittent creeks drain northerly and westerly. Elevation is from 4,000 to 6,500 feet above sea level.



First 8 miles of road
NOTE: - Highline Valley highway not
shown on this map.

4067 M-2

THE ENGINEERS LTD.
INCORPORATED
100 - 10000
SURREY, CAN.

C. E. Allen Technical Engineering
Box 20, 1971

GEOLOGICAL SURVEY

Pace and Brunton compass traverses were made over the property by the writer. Controls were the peak of Glossy Mountain and a surveyed grid with east-west lines at 400-foot intervals tied to three north-south base lines.

Rock outcrops were mapped and diagnostic specimens of the various types acquired.

A field map on a scale of one inch to 300 feet was used. This has been reduced to 600-foot scale and is contained in the pocket of the report cover.

SURVEY RESULTS

Glossy Mountain is located east of the contact between Upper Triassic sediments, volcanics and metamorphic rocks of the Nicola Group and Jurassic-Cretaceous Coast Range granodiorite. On the east summit of Glossy Mountain the Nicola rocks are overlain unconformably by Eocene basalt of the Kamloops Group.

The geological survey resulted in locating the contacts between the above mentioned rocks on the claims area. In addition, data was acquired pertaining to the metamorphic rocks along the contact of the granodiorite contact.

The Nicola Group

The Nicola rocks outcrop in a northerly trending one-half mile band lying over the summit of Glossy Mountain. Three rock types are evident.

Along the contact with the Coast Range intrusives there is a zone 600 to 1,200 feet wide made up of metamorphised sediments. These are garnetite crystalline limestone and cherty quartzite. Bedding is evidenced by black, grey and cream coloured bands, and alternate zones several feet in width of quartzite and limestone. The cherty quartzite is light grey to black and weathers brown to grey. The limestone is thin bedded to massive and white to cream and mottled grey and black. The garnetite is a massive, fine- to medium-grained rocks ranging in colour from green to brown.

Lying east of the contact zone is a 600 to 1800 foot band of andesite. This rock is black, fine-grained and aphanitic to finely porphyritic. Massive outcrops lie on the north-east and west sides of the summit of Glossy Mountain forming steep cliffs up to 40 feet high. Elsewhere outcrops are plentiful in a northerly trending zone which appears to thin out or be cut off by the granodiorite near the north boundary of the property.

Located east of the andesite are massive to thin banded cherty quartzite. This zone extends east off the property and beneath the young basalt. Some beds are almost pure flint, weathering light grey to white. There are zones of grey to black impure quartzite, showing distinctive light to dark grey banding on weathered surface. The strata are close to vertical.

The Coast Range Intrusives

The west part of the property is underlain by the Guichon Creek batholith. This is a medium-to dark-grey, medium-grained biotite-hornblende granodiorite. Scattered dark xenoliths were noted in some outcrops. The limited visible quartz grains, noted by megascopic inspection, are dull cream to iridescent. The feldspars are cream, grey and shades of apple green.

The only structure noted was a series of tight narrow shear zones just off the westerly corner of the property on grid 58N - 56E. These zones are vertical and strike northwesterly. Two rock cuts near them did not expose sulphide mineralization.

The granodiorite exposed on and northwest of the HY 15 claim is sheared and altered. It weathers brown and contains minor disseminated pyrite and narrow stringers of epidote and calcite. The granodiorite at this location is described by K.E. Northcote of the British Columbia Department of Mines as the ~~(Guichon)~~ Hybrid phase of the Guichon Creek batholith.

The Kamloops Group

On the HY 10 and 12 claims, on and near the southeast corner of the property, the contact between the Nicola rocks and vesicular basalt of the Kamloops group was located. The basalt is coarsely vesicular, black on fresh fracture but weathers light brown on weathered surface. This extrusive volcanic is the youngest in the area and masks all underlying rocks which may contain mineral deposits.

CONCLUSIONS AND RECOMMENDATIONS

The property is located on the Highland Valley southeast of Ashcroft. It overlies the contact between the Guichon batholith and a series of metamorphic, volcanic and sedimentary rocks of the Nicola Group. The contact zone is composed of metamorphic rocks, chiefly impure limestone, skarn, and garnetite.

The contact zone is the most favourable for possible occurrences of copper-molybdenum mineralization, and future investigations should be concentrated thereon.

Respectfully submitted,

ALLEN GEOLOGICAL ENGINEERING LTD.

Per Alfred R. Allen P.Eng.
Alfred R. Allen

601 - 325 Howe Street
Vancouver, B.C.

October 30, 1972.

REFERENCES

Annual Reports, B.C. Minister of Mines

Cockfield, W.E., G.S.C. Mem 249

Duffel, S. and McTaggart, K.C., G.S.C. Mem 262

Northcote K.E., B.C. Department of Mines Bulletin No. 56

* * * * *

GEOLOGICAL SURVEY

By: Alfred R. Allen, P.Eng.

On:

HY 1-21 Claims : 121 - 51 NE

KAMLOOPS, M.D.

29-9-72 : 30-10-72

FEEES

Alfred R. Allen, September 29, 30.
October 1 - 6

Partial time: October 12, 14, 15, 17, 19, 20, 28, 30.

\$2280.00

EXPENDITURES

Motel and food 182.77

Truck Rental, gas and oil 142.15
9.10

Maps, reports, telephone 12.00

\$2626.02

Declared before me at the *Ltely*
of *Hammer*, in the
Province of British Columbia, this *29th*
day of *Nov.*, 1972, A.D.

Alfred R. Allen

W.P. Phillips SUB-MINING RECORDER
A Commissioner for taking Affidavits within British Columbia or
A Notary Public in and for the Province of British Columbia.

