

4224

D. W. TULLY HOLDINGS LTD.  
SUITE 102 - 2222 BELL VUE AVENUE  
WEST VANCOUVER, B.C.

92I/7E

REPORT ON A

MAGNETOMETER AND GEOCHEMICAL SURVEY  
OVER PART OF THE

NEUMAN CLAIM GROUP 1-20  
LAC LE JEUNE AREA  
KAMLOOPS MINING DIVISION  
BRITISH COLUMBIA

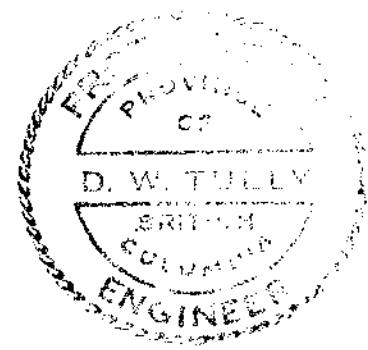
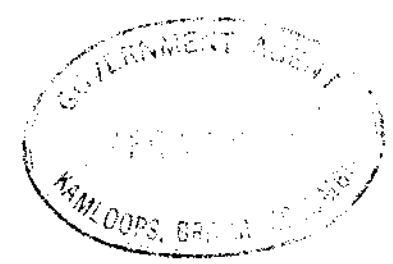
50-30 N. LAT.

120-30 W. LONG.

FOR

SONESTA RESOURCES LTD.  
534-789 WEST PENDER STREET  
VANCOUVER, B.C.

Mines and Geoscience Resources  
ASSESSMENT REPORT  
NO. 4224 BY



DONALD W. TULLY, P. ENG.

APRIL 12, 1973

WEST VANCOUVER, B.C.

**D. I. T. HOLDINGS LTD.**

SUITE 102 - 2222 BELLEVUE AVENUE  
WEST VANCOUVER, B. C.

TABLE OF CONTENTS

	<u>Page</u>
SUMMARY AND CONCLUSIONS.....	2
INTRODUCTION.....	2
PROPERTY LOCATION, ACCESS, TOPOGRAPHY.....	3
CLAIMS.....	3
PREVIOUS DEVELOPMENT - REFERENCES.....	4
GENERAL GEOLOGY.....	5
MAGNETOMETER SURVEY RESULTS.....	5
GEOCHEMICAL SURVEY RESULTS.....	6
MINERALIZATION.....	7
RECOMMENDATIONS.....	7
CERTIFICATE.....	8
ASSAY CERTIFICATES.....	(End Of Report)

MAPS

#1 PROPERTY LOCATION MAP.....	Frontispiece
#2 CLAIM MAP.....	Following Page 2
#3 AREA PROPERTY MAP.....	Following Page 3
#4 MAGNETOMETER PLAN (1" = 400').....	In Pocket
#5 GEOCHEMICAL PLAN (1" = 400').....	In Pocket

APPENDIX A

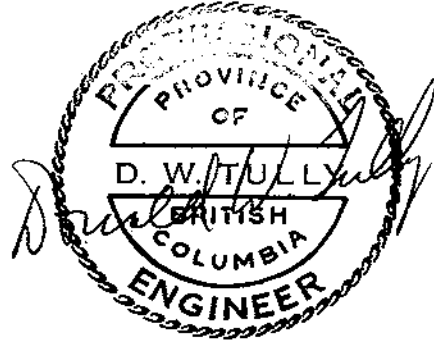
Work Report on Neuman 1-20 Mining Claims by Uno Leis, Strato  
Geological Ltd., dated December 1, 1972

**LOCATION MAP**

SCALE: 1" = 30 Miles



WILLIAMS LAKE



Department of  
Mines and Petroleum Resources  
ASSESSMENT REPORT  
NO. **4224** MAP **#1**

**SONESTA RESOURCES LTD.**

NEUMAN CLAIM GROUP

1-20

REVELSTOKE

ASHCROFT

KAMLOOPS

Highland  
Valley

AFTON  
LEEMAC

MERRITT

VANCOUVER

1

HOPE

PRINCETON

PENTICTON

3

OSOYOOS

3

BRITISH COLUMBIA  
WASHINGTON U.S.A.

**D. I. T. HOLDINGS LTD.**

SUITE 102 · 2222 BELLEVUE AVENUE  
WEST VANCOUVER, B.C.

SUMMARY AND CONCLUSIONS

A magnetic anomaly "Low" occurs north of Meadow Creek on Neuman claims 3 and 19. This anomaly is flanked on the east and west by two parallel "ridges" of anomaly "lows" trending in a north-south direction. Minor anomaly "lows" were also found on Neuman claims 2, 4, 5, 15, 17 and 18.

Total magnetic relief is 1602 gammas.

Geochemical soil sample results were of no economic interest.

It is concluded that the lack of geochemical response over the magnetic anomaly "highs" and "lows" suggest if any economic minerals are present they occur at considerable depth.

No further work is recommended.

INTRODUCTION

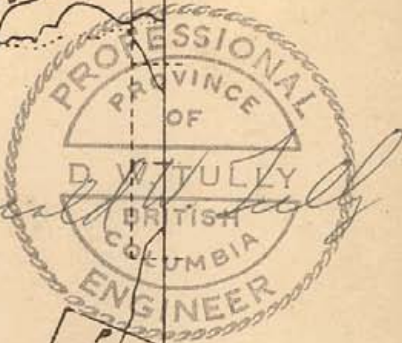
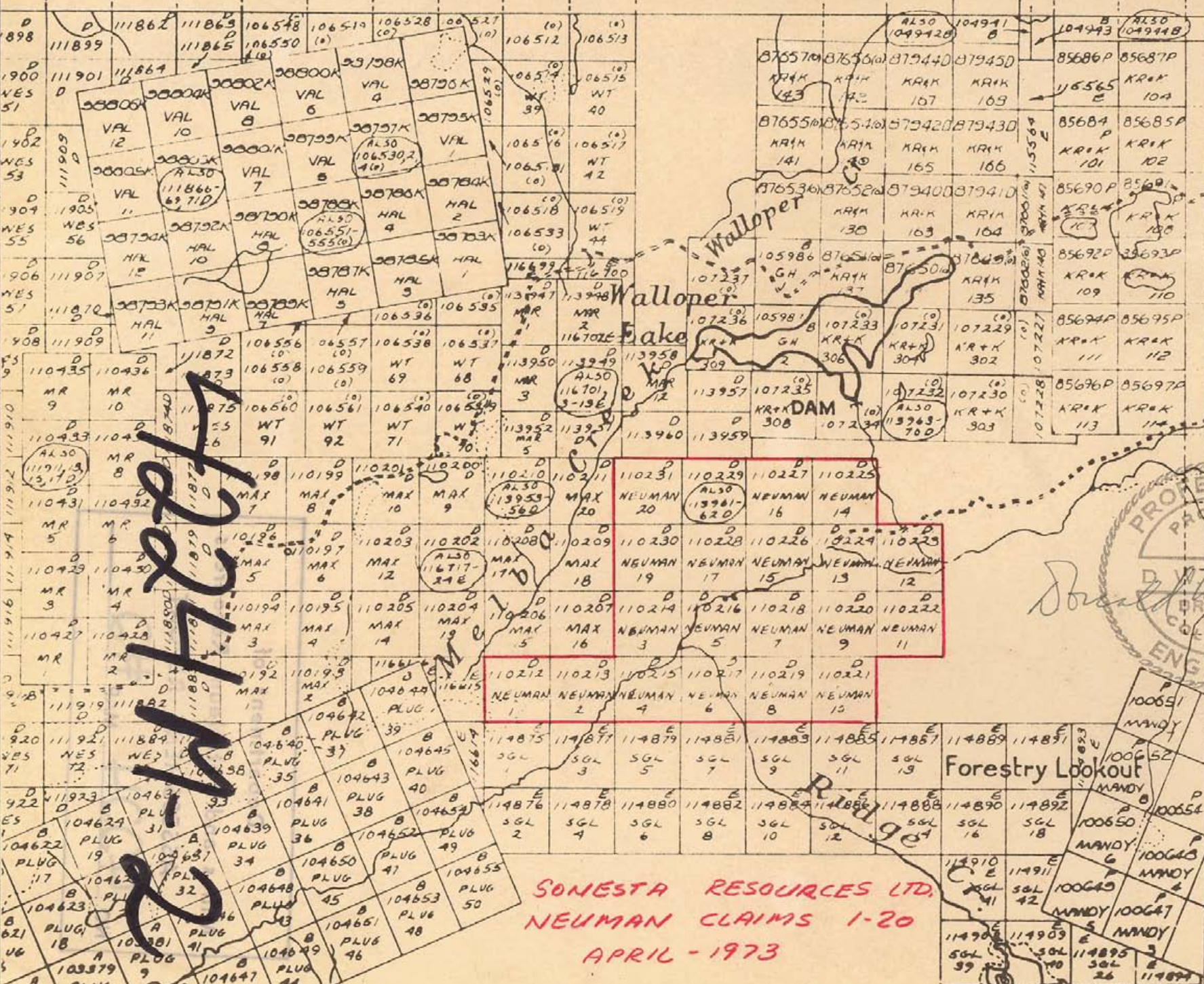
Pursuant to a request by Mr. S. Belzberg of Sonesta Resources Ltd. a study was made of the magnetometer survey and geochemical soil sample results over Neuman claims 1-8, 15-20 inclusive.

I examined the work on the claim group on April 6, 1973.



120° 30'

50° 30'



SONESTA RESOURCES LTD.  
 NEUMAN CLAIMS 1-20  
 APRIL - 1973

Forestry Lookout

*Donald W. Tuttle*



**D. I. T. HOLDINGS LTD.**

SUITE 102 - 2222 BELLEVUE AVENUE  
WEST VANCOUVER, B.C.

PROPERTY LOCATION, ACCESS, TOPOGRAPHY

The Neuman claim group is situated in the north-east part of Township 17, Range 19, West 6 in the Lac Le Jeune area some 20 miles southwest of Kamloops, British Columbia. Walloper Lake lies about one mile to the north.

The Kamloops - Logan Lake road provides ready access.

Surface Lot 27 may carry mining rights as well as surface restrictions not accruing to the Neuman claims.

Forest fires have denuded the western part of the property.

Elevations vary between 4000 and 4300 feet above sea-level over undulating southwest trending topography. Meadow Creek trends southwesterly through the claims from Lac Le Jeune.

CLAIMS

<u>Claim Name</u>	<u>Record #</u>	<u>Expiry Date</u>
Neuman # 1	110212 D	April 14, 1973
# 2	3	"
# 3	4	"
# 4	5	"
# 5	6	"
# 6	7	"
# 7	8	"
# 8	9	"
# 9	110220	"
#10	1	"
#11	2	"
#12	3	"



**D. I. T. HOLDINGS LTD.**

SUITE 102 - 2222 BELLEVUE AVENUE  
WEST VANCOUVER, B. C.

<u>Claim Name</u>	<u>Record #</u>	<u>Expiry Date</u>
Neuman #13	110224	April 14, 1973
#14	5	"
#15	6	"
#16	7	"
#17	8	"
#18	9	"
#19	110230	"
#20	1 D	"

Assessment work was reported by U. Leis as filed on April 4, 1973 on the Neuman claims as follows:

Neuman # 1-10	-	3 years assessment credit
Neuman 11	-	2 years assessment credit
Neuman 12-20	-	3 years assessment credit

PREVIOUS DEVELOPMENT - REFERENCES

This ground has been explored in the past from evidence of previous staking.

The following records are useful references:

1. G.S.C. Map 886A
2. G.S.C. Geophysics Map 5212G
3. B.C. Department of Mines Claim Map 92-I/7E.
4. Report on the Neuman Claims 1-20 by Donald W. Tully, P.Eng., dated April 24, 1972.

The area north of this claim group was the scene of intense exploration activity around Afton Mines in 1972.



**D. I. T. HOLDINGS LTD.**

SUITE 102 · 2222 BELLEVUE AVENUE  
WEST VANCOUVER, B. C.

GENERAL GEOLOGY

Sand, gravel and fluviglacial overburden covers most of the claim group.

Guichon batholith (Edith Hill phase) contacts the Nicola volcanics in a northeasterly direction through the claim group near Lac Le Jeune. The contact phase is generally a metamorphosed facies varying in character between chlorite schist, amphibolite and quartz-mica schist. The batholith itself is probably of Jurassic age and intrudes the earlier Nicola volcanics. Overburden conceals the contact.

Nicola-type volcanics are relatively scarce over the claims.

Geophysics Paper 5212G indicates a magnetic anomaly trending northeasterly through the property with a magnetically "low" area in the vicinity of the Guichon-Nicola postulated contact.

MAGNETOMETER SURVEY RESULTS

The magnetometer survey was conducted by Strato Geological Ltd. during the period August 25 to September 17, 1972. The procedure, control and instrumentation is described by Mr. Uno Leis in Appendix A at the end of this report. The work was conducted under the supervision of Donald W. Tully, P.Eng.

The results are shown on the accompanying plan on scale 1" = 400'.

**D. I. T. HOLDINGS LTD.**

SUITE 102 · 2222 BELLEVUE AVENUE  
WEST VANCOUVER, B. C.

Pronounced north-south trending magnetic linear "lows" occur on the north side of Meadow Creek. Although less dominant "lows" are in evidence south of Meadow Creek it is suggested a fault occurs in the basin of this creek truncating these in a northeast-southwest direction. The magnetic trend is generally north-northeast.

Minus 1316 gammas was the lowest magnetic reading found on Neuman claim #8 and the highest on Neuman #18 (+398). The total magnetic relief is 1714 gammas.

The magnetics generally reflect a Nicola-volcanic rock-type environment.

GEOCHEMICAL SURVEY RESULTS

Strato Geological Ltd. conducted the geochemical survey. The ground control, sample procedure and analysis are described by Mr. Uno Leis in Appendix A at the end of this report. The work was performed under the direction of this writer.

A study of the results shows 743 geochemical soil samples were analyzed for copper as follows:

164	samples	assayed	0-24	ppm	copper
315	"	"	25-49	"	"
146	"	"	50-74	"	"
104	"	"	75-99	"	"
14	"	"	100+	"	"
<hr/>					
743	samples				

**D. I. T. HOLDINGS LTD.**

SUITE 102 · 2222 BELLEVUE AVENUE  
WEST VANCOUVER, B.C.

The highest geochemical assay was 187 parts per million copper.

It is concluded the results show no geochemical values of economic interest.

MINERALIZATION

There is no economic mineralization on the claim group known to the writer.

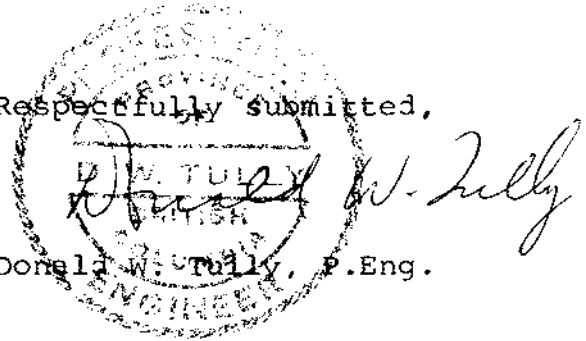
RECOMMENDATIONS

No further work is recommended on the Neuman claims.

April 12, 1973

Respectfully submitted,

Donald W. Tully, P.Eng.





**D. I. T. HOLDINGS LTD.**

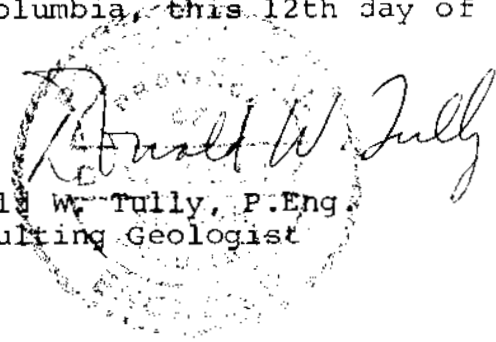
SUITE 102 · 2222 BELLEVUE AVENUE  
WEST VANCOUVER, B. C.

CERTIFICATE

I, DONALD WILLIAM TULLY, of the Municipality of West Vancouver, Province of British Columbia, hereby certify as follows:

1. I am a Consulting Geologist with an office at Suite 102-2222 Bellevue Avenue, West Vancouver, British Columbia.
2. I am a registered professional engineer in the Province of British Columbia and Ontario.
3. I graduated with a degree of Bachelor of Science, Honours Geology, from McGill University in 1943.
4. I have practiced my profession for twenty-eight years.
5. I have no direct, indirect or contingent interest in the Neuman claims or shares of Sonesta Resources Ltd. nor do I intend to receive any interest.
6. This report dated April 12, 1973 is based on a study of the magnetometer readings, geochemical soil sample results and an examination of the ground control in the field on April 6, 1973.

DATED AT West Vancouver, British Columbia, this 12th day of April, 1973

  
Donald W. Tully, P.Eng.  
Consulting Geologist

ASSAYERS  
CHEMISTS  
GEOCHEMISTS

NEUMAN  
- CLAIMS -



# CORE LABORATORIES - CANADA LTD.

325 Howe Street Vancouver 1, B.C. Phone 688-3504

## Certificate of Analysis

REPORT NO.  
560 (1)

SAMPLE(S) FROM SETLETS GEOLOGICAL

SAMPLE NO.	Cu ppm
A 89 05	26 ✓
2	57
4	64
6	91
8	70
10	28 ✓
12	40 ✓
14	51
A 91 05	44 ✓
2	35 ✓
4	37 ✓
6	72
8	73
10	76
12	23
14	18
A 93 0	51
25	63
4	41 ✓
6	32 ✓
8	73
10	65
12	57
14	89
A 95 0	77
25	35 ✓
4	37 ✓
6	33 ✓
8	40 ✓
10	31 ✓
12	59
14	68
A 97 0	87
25	40 ✓
4	45 ✓
6	55
8	25
10	31 ✓
12	26 ✓
14	85

DATE September 13, 1972

SIGNED *J. Lee*

PULP AND REJECTS DISCARDED AFTER 3 MONTHS

ASSAYERS  
CHEMISTS  
GEOCHEMISTS



# CORE LABORATORIES - CANADA LTD.

325 Howe Street Vancouver 1, B.C. Phone 688-3504

## Certificate of Analysis

REPORT NO.

560

SAMPLE(S) FROM STRATO GEOLOGICAL (PAGE 2)

SAMPLE NO.	Cu ppm
A 99 0	19
2S	19
4	45 ✓
6	39 ✓
8	32 ✓
10	85
12	28 ✓
14	47
A 101 0	25
2S	60
4	29 ✓
6	48 ✓
8	73
10	56
12	40 ✓
14	44 ✓
A 103 0	54
2S	32 ✓
4	34 ✓
6	29 ✓
8	60
10	20
12	21
14	41 ✓
A 105 0	30 ✓
2S	39 ✓
4	36 ✓
6	45 ✓
8	26 ✓
10	52
12	29 ✓
14	50
A 107 0S	21
2	61
4	60
6	35 ✓
8	67
10	62
12	60
14	24

DATE September 13, 1972

SIGNED

PULP AND REJECTS DISCARDED AFTER 3 MONTHS



ASSAYERS  
CHEMISTS  
GEOCHEMISTS



# CORE LABORATORIES - CANADA LTD.

325 Howe Street Vancouver 1, B.C. Phone 688-3504

## Certificate of Analysis

REPORT NO.  
560

SAMPLE(S) FROM STRATO GEOLOGICAL (PAGE 3)

SAMPLE NO.	Cu ppm
B 22 0	80
25	82
4	58
6	45 ✓
8	69
10	68
12	51
14	62
B 24 0	41 ✓
25	46 ✓
4	66
6	73
8	57
10	59
12	52
14	70
B 26 0	62
25	75
4	78
6	60
8	56
10	58
12	69
14	50
2N	29 ✓
4	22
6	34 ✓
8	33 ✓
10	19
12	31 ✓
14	155
B 28 0	27 ✓
25	47 ✓
4	59
6	60
8	115
10	55
12	68
14	65
2N	25

DATE September 13, 1972

SIGNED *[Signature]*

PULP AND REJECTS DISCARDED AFTER 3 MONTHS

ASSAYERS  
CHEMISTS  
GEOCHEMISTS



# CORE LABORATORIES - CANADA LTD.

325 Howe Street Vancouver 1, B.C. Phone 688-3504

## Certificate of Analysis

REPORT NO.

560

SAMPLE(S) FROM STRATO GEOLOGICAL (PAGE 4)

SAMPLE NO.	Cu ppm
B 28 4N	11
6	13
8	20
10	45
12	52
B 30 2S	47
4	72
6	67
8	66
10	55
12	55
14	67
B 30 0	28
2N	20
4	28
6	28
8	23
10	23
12	31
14	28
B 32 0	11
2N	12
4	19
6	28
8	26
10	19
12	44
14	43
B 34 2S	58
4	68
6	58
8	59
10	60
12	64
14	43
B 34 0	27
2N	27
4	22
6	19
8	21

DATE September 13, 1972

SIGNED \_\_\_\_\_

PULP AND REJECTS DISCARDED AFTER 3 MONTHS

ASSAYERS  
CHEMISTS  
GEOCHEMISTS



# CORE LABORATORIES - CANADA LTD.

325 Howe Street Vancouver 1, B.C. Phone 688-3504

## Certificate of Analysis

REPORT NO.

560

SAMPLE(S) FROM STRATO GEOLOGICAL (PAGE 5)

SAMPLE NO.	Cu ppm
B 34 10N	22
12	27 ✓
14	32 ✓
B 36 0	40 ✓
23	52
4	59
6	64
8	54
10	59
12	88
14	113
B 38 2S	30
4	83
6	82
8	67
10	59
12	51
14	57 ✓
B 38 0	38 ✓
2N	23
4	55
6	56
8	47 ✓
10	40 ✓
12	23
14	25
B 40 2S	33 ✓
4	32 ✓
6	70
8	66
10	75
12	73
14	52 ✓
B 32 2S	33 ✓
4	54
6	56
8	49
10	81
12	71
14	98

DATE September 13, 1972

SIGNED 

PULP AND REJECTS DISCARDED AFTER 3 MONTHS



ASSAYERS  
CHEMISTS  
GEOCHEMISTS



# CORE LABORATORIES - CANADA LTD.

325 Howe Street Vancouver 1, B.C. Phone 688-3504

## Certificate of Analysis

REPORT NO.

560

SAMPLE(S) FROM STRATO GEOLOGICAL (PAGE 6)

SAMPLE NO.	Cu ppm
B 36 2N	38 ✓
4	26
6	31 ✓
8	23
10	23
12	24
14	27 ✓
B 40 0	58
2N	24
4	23
6	27 ✓
8	36 ✓
10	41 ✓
12	18
14	23 ✓
B 42 2S	38 ✓
4	55
6	64
8	68
10	58
12	79
14	85
B 42 0	144 ✓
2N	42 ✓
4	85
6	35 ✓
8	36 ✓
10	35 ✓
12	69
14	15
B 44 0	29 ✓
2S	46 ✓
4	45 ✓
6	60
8	59
10	67
12	75 ✓
14	46 ✓
B 44 2N	21 ✓
4	48 ✓

DATE September 13, 1972

SIGNED *[Signature]*

PULP AND REJECTS DISCARDED AFTER 3 MONTHS

ASSAYERS  
CHEMISTS  
GEOCHEMISTS



# CORE LABORATORIES - CANADA LTD.

325 Howe Street Vancouver 1, B.C. Phone 688-3504

## Certificate of Analysis

REPORT NO.  
560

SAMPLE(S) FROM STRATO GEOLOGICAL (PAGE 7)

SAMPLE NO.	Cu ppm
B 44 6N	39 ✓
8	19 ✓
10	29 ✓
12	43 ✓
14	43 ✓
B 46 0	45 ✓
2S	52
4	59
6	73
8	55
10	75
12	80
14	45 ✓
B 46 2N	29 ✓
4	22
6	110
8	36 ✓
10	28 ✓
12	27 ✓
14	24 ✓
B 48 2S	39 ✓
4	65
6	80
8	71
10	81
12	46 ✓
14	33 ✓
B 48 0	45 ✓
2N	40 ✓
4	31 ✓
6	28 ✓
8	31 ✓
10	24
12	19 ✓
14	28 ✓
B50 2S	41 ✓
4	73
6	70
8	73
10	75

DATE September 13, 1972

SIGNED \_\_\_\_\_

PULP AND REJECTS DISCARDED AFTER 3 MONTHS

ASSAYERS  
CHEMISTS  
GEOCHEMISTS



# CORE LABORATORIES - CANADA LTD.

325 Howe Street Vancouver 1, B.C. Phone 688-3504

## Certificate of Analysis

REPORT NO.  
560

SAMPLE(S) FROM STRATO GEOLOGICAL (PAGE 8)

SAMPLE NO.	Cu ppm
B 50 123	53
14	61
B 50 0	26
2N	22
4	25
6	26
8	27
10	30
12	30
14	19
B 52 23	39
4	55
6	68
8	55
10	54
12	62
14	60
B 52 0	31
2N	27
4	22
6	19
8	20
10	40
12	36
14	24
B 54 23	40
4	74
6	55
8	43
10	32
12	81
14	66
B 54 0	49
2N	30
4	25
6	19
8	27
10	26
12	23
14	27

DATE September 13, 1972

SIGNED [Signature]

PULP AND REJECTS DISCARDED AFTER 3 MONTHS

ASSAYERS  
CHEMISTS  
GEOCHEMISTS



# CORE LABORATORIES - CANADA LTD.

325 Howe Street Vancouver 1, B.C. Phone 688-3504

## Certificate of Analysis

REPORT NO.  
560

SAMPLE(S) FROM STRATO GEOLOGICAL (PAGE 9)

SAMPLE NO.	Cu ppm
B 56 23	60
4	59
6	52
8	55
10	78
12	64
14	48 ✓
B 56 0	37 ✓
2N	38 ✓
4	25 ✓
6	43 ✓
8	49 ✓
10	26 ✓
12	24 ✓
14	24 ✓
B 58 0	54 ✓
23	45 ✓
4	53
6	58
8	102
10	38 ✓
12	58
14	55
B 58 2N	23 ✓
4	28 ✓
6	20 ✓
8	26 ✓
10	25 ✓
12	36 ✓
14	23 ✓
B 60 0	31 ✓
2 S	5 ✓
4	47 ✓
6	69
8	77
10	83
12	80
14	50
B 60 2N	21 ✓
4	27 ✓

DATE September 13, 1972

SIGNED *[Signature]*

PULP AND REJECTS DISCARDED AFTER 3 MONTHS

ASSAYERS  
CHEMISTS  
GEOCHEMISTS



# CORE LABORATORIES - CANADA LTD.

325 Howe Street Vancouver 1, B.C. Phone 688-3504

## Certificate of Analysis

REPORT NO.  
560

SAMPLE(S) FROM STRATO GEOLOGICAL (PAGE 10)

SAMPLE NO.	Cu ppm
B 60 6N	23 ✓
8	28 ✓
10	17 ✓
12	38 ✓
14	18 ✓
B 62 23	30 ✓
4	71
6	63 ✓
8	32 ✓
10	68 ✓
12	48 ✓
14	28 ✓
B 62 0	32 ✓
2N	20 -
4	16 -
6	19 -
8	28 ✓
10	27 ✓
12	17 -
14	21 -

380

DATE September 13, 1972

SIGNED \_\_\_\_\_

PULP AND REJECTS DISCARDED AFTER 3 MONTHS





# CORE LABORATORIES - CANADA LTD.

325 HOWE STREET - VANCOUVER 1, B.C.

TELEPHONE 688-3504



## CERTIFICATE OF ANALYSIS

REPORT NO.

621

ASSAYERS

CHEMISTS

GEOCHEMISTS

SAMPLE(S) FROM

STRATO GEOLOGICAL

SAMPLE(S) OF	SAMPLE NO.	Cu ppm
A 33	ON/S	28
	2N	21
	4	48
	6	37
	8	41
	10	106
	23	31
	4	27
	6	33
	8	42
	10	25
	12	28
	14	26
	A 35	ON/S
2N		32
4		28
6		57
8		37
10		55
23		28
4		127
6		22
8		35
10		27
12		28
14		39
A 37		ON
	2	29
	4	45
	6	85
	8	60
	10	31
	23	24
	4	70
	6	16
	8	37
	10	27
	12	20
	14	21
	A 39	ON/S

DATE September 26, 1972

SIGNED \_\_\_\_\_



# CORE LABORATORIES - CANADA LTD.

325 HOWE STREET - VANCOUVER 1, B.C.

TELEPHONE 688-3504



## CERTIFICATE OF ANALYSIS

REPORT NO.

621

ASSAYERS

CHEMISTS

GEOCHEMISTS

SAMPLE(S) FROM

STRATO GEOLOGICAL (PAGE 2)

SAMPLE(S) OF	SAMPLE NO.	Cu ppm	
A 39	2N	97	
	4	60	
	6	41	
	8	52	
	10	44	
	2S	58	
	4	72	
	6	187	
	8	58	
	10	21	
	12	48	
	14	15	
	A 41	ON	23
		2	49
4		36	
6		31	
8		37	
10		33	
12		54	
2S		28	
4		39	
6		25	
8		25	
10		34	
12		24	
14		16	
A 43	ON	32	
	2	32	
	4	44	
	6	31	
	8	61	
	10	32	
	12	75	
	14	57	
	2S	23	
	4	21	
	6	41	
	8	52	
	10	21	
	12	87	

DATE September 26, 1972

SIGNED \_\_\_\_\_

PULP AND REJECTS DISCARDED AFTER 3 MONTHS



# CORE LABORATORIES - CANADA LTD.

325 HOWE STREET - VANCOUVER 1, B.C.

TELEPHONE 688-3504



## CERTIFICATE OF ANALYSIS

REPORT NO.

621

ASSAYERS  
CHEMISTS  
GEOCHEMISTS

SAMPLE(S) FROM

STRATO GEOLOGICAL (PAGE 3)

SAMPLE(S) OF	SAMPLE NO.	Cu ppm	
A 43	14S	51	
	A 45	ON	34
		2	31
		4	53
		6	34
		8	54
		10	44
		12	85
		14	79
		2S	35
		4	31
		6	28
		8	22
		10	19
12		18	
A 47	14	34	
	ON	23	
	2	26	
	4	35	
	6	68	
	8	35	
	10	39	
	12	74	
	14	85	
	2S	41	
	4	38	
	6	97	
	8	31	
	10	24	
12	16		
A 49	14	34	
	ON	31	
	2	44	
	4	27	
	6	28	
	8	29	
	10	25	
	12	104	
	14	85	
	2S	22	

DATE September 26, 1972

SIGNED \_\_\_\_\_

PULP AND REJECTS DISCARDED AFTER 3 MONTHS



# CORE LABORATORIES - CANADA LTD.

325 HOWE STREET - VANCOUVER 1, B.C.

TELEPHONE 688-3504



## CERTIFICATE OF ANALYSIS

REPORT NO.

621

ASSAYERS  
CHEMISTS  
GEOCHEMISTS

SAMPLE(S) FROM

STRATO GEOLOGICAL (PAGE 4)

SAMPLE(S) OF	SAMPLE NO.	Cu ppm
A 49	45	19
	6	45
	8	20
	10	22
	12	50
A 51	14	42
	ON	23
	2	39
	4	34
	6	24
	8	32
	10	35
	12	74
	14	44
	23	29
	4	29
	6	13
	8	23
10	16	
12	62	
A 53	14	28
	ON	29
	2	31
	4	31
	6	35
	8	24
	10	49
A 53	12	114
	14	126
	23	22
	4	13
	6	49
	8	21
A 55	10	21
	12	30
	14	15
	ON	31
	2	19
	4	28
6	28	

DATE September 26, 1972

SIGNED \_\_\_\_\_



# CORE LABORATORIES - CANADA LTD.

325 HOWE STREET - VANCOUVER 1, B.C.

TELEPHONE 688-3504



## CERTIFICATE OF ANALYSIS

REPORT NO.

621

ASSAYERS  
CHEMISTS  
GEOCHEMISTS

SAMPLE(S) FROM

STRATO GEOLOGICAL

SAMPLE(S) OF	SAMPLE NO.	Cu ppm	
A 55	8N	21	
	10	41	
	12	68	
	14	113	
	23	22	
	4	27	
	6	28	
	8	34	
	10	17	
	12	25	
	14	22	
	A 57	ON	17
		2	25
		4	38
6		22	
8		27	
10		46	
12		68	
14		65	
A 57	23	12	
	4	71	
	6	17	
	8	23	
	10	26	
	12	27	
	14	22	
A 59	ON	41	
	2	52	
	4	44	
	6	32	
	8	31	
	10	39	
	12	60	
	14	76	
	23	32	
	4	25	
	6	9	
	8	23	
	10	14	
12	21		

DATE September 26, 1972

SIGNED \_\_\_\_\_

PULP AND REJECTS DISCARDED AFTER 3 MONTHS



# CORE LABORATORIES - CANADA LTD.

325 HOWE STREET - VANCOUVER 1, B.C.

TELEPHONE 688-3504



## CERTIFICATE OF ANALYSIS

REPORT NO.

621

ASSAYERS  
CHEMISTS  
GEOCHEMISTS

SAMPLE(S) FROM

STRATO GEOLOGICAL

SAMPLE(S) OF	SAMPLE NO.	Cu ppm
	A 59 143	19
	A 61 ON/S	20
	2N	48 ✓
	4	40 ✓
	6	75
	8	61
	10	68
	12	112
	14	58
	23	20
	4	42 ✓
	6	18
	8	23
	10	24
	12	18
	14	25
	A 63 ON/S	45 ✓
	2N	22
	4	58
	6	51
	8	56
	10	63
	12	62
	23	98
	4	41 ✓
	6	25
	8	48 ✓
	10	46
	12	18
	14	21
	A 65 ON/S	42 ✓
	2N	39
	4	32 ✓
	6	30
	8	56
	10	58
	12	33
	A 65 23	28
	4	34
	6	37

DATE September 26, 1972

SIGNED \_\_\_\_\_

PULP AND REJECTS DISCARDED AFTER 3 MONTHS





# CORE LABORATORIES - CANADA LTD.



325 HOWE STREET - VANCOUVER 1, B.C.

TELEPHONE 688-3504

ASSAYERS  
CHEMISTS  
GEOCHEMISTS

## CERTIFICATE OF ANALYSIS

REPORT NO.

621

SAMPLE(S) FROM STRATO GEOLOGICAL (PAGE 7)

SAMPLE(S) OF	SAMPLE NO.	Cu ppm
A 65	83	30 ✓
	10	45 ✓
	12	24 ✓
	14	30 ✓
A 67	ON	25 ✓
	2	25 ✓
	4	40 ✓
	6	42 ✓
	8	58 ✓
	10	61 ✓
	12	27 ✓
	23	26 ✓
	4	62 ✓
	6	64 ✓
	8	34 ✓
	10	23 ✓
	12	31 ✓
	14	28 ✓
A 69	ON	43 ✓
	2	32 ✓
	4	29 ✓
	6	63 ✓
	8	54 ✓
	10	56 ✓
	12	61 ✓
	23	64 ✓
	4	52 ✓
	6	33 ✓
	8	32 ✓
	10	31 ✓
	12	28 ✓
	14	31 ✓
A 71	n	53 ✓
	2	21 ✓
	4	47 ✓
	6	68 ✓
	8	87 ✓
	10	82 ✓
	23	34 ✓
4	25 ✓	

DATE September 26, 1972

SIGNED \_\_\_\_\_

PULP AND REJECTS DISCARDED AFTER 3 MONTHS



# CORE LABORATORIES - CANADA LTD.

325 HOWE STREET - VANCOUVER 1, B.C.

TELEPHONE 688-3504



## CERTIFICATE OF ANALYSIS

REPORT NO.

621

ASSAYERS  
CHEMISTS  
GEOCHEMISTS

SAMPLE(S) FROM

STRATO GEOLOGICAL (PAGE 8)

SAMPLE(S) OF	SAMPLE NO.	Cu ppm
A 71	63	64
	8	49 ✓
	10	22 -
	12	20 -
	14	26 ✓
A 73	2N	23 -
	4	33 ✓
	6	54
	8	123
	10	54 ✓
	<del>12</del> 0	32 ✓
	2S	20 -
	4	32 ✓
	6	72
	8	52 ✓
A 75	10	45 ✓
	12	20 -
	14	98
	0	22 -
	2N	23 -
	4	36 ✓
	6	32 ✓
	8	56
	0	18 -
	2S	18 -
A 77	4	43 ✓
	6	30 ✓
	8	31 ✓
	10	20
	12	22 ✓
	14	43 ✓
	2N	45 ✓
	4	42 ✓
	6	40 ✓
	8	52
ON/S	33 ✓	
2S	2S	59
	4	72
	6	37 ✓
	8	32 ✓

DATE Sept. 26/72

SIGNED \_\_\_\_\_

PULP AND REJECTS DISCARDED AFTER 3 MONTHS



# CORE LABORATORIES - CANADA LTD.

325 HOWE STREET - VANCOUVER 1, B.C.

TELEPHONE 688-3504



## CERTIFICATE OF ANALYSIS

REPORT NO.

621

ASSAYERS  
CHEMISTS  
GEOCHEMISTS

SAMPLE(S) FROM

STRATO GEOLOGICAL (PAGE 9)

SAMPLE(S) OF	SAMPLE NO.	Cu ppm	
A 77	10S	33 ✓	
	12	27 ✓	
	14	26 ✓	
A 79	0 N/S	64	
	2S	57	
	4	18	
	6	30 ✓	
	8	40 ✓	
	10	28 ✓	
	12	21	
	14	38 ✓	
	A 81	0	27 ✓
		2S	63
4		46 ✓	
6		55	
8		42 ✓	
10		48 ✓	
12		23	
14		40 ✓	
A 83		0	46 ✓
		2S	29 ✓
	4	42 ✓	
	6	46 ✓	
	8	27 ✓	
	10	48 ✓	
	12	41 ✓	
	14	28 ✓	
	A 85	0S	25
		2	30 ✓
4		22	
6		58	
8		53	
10		21	
12		22	
14		45 ✓	
A 87		0 N/S	26
		2	25
	4	77	
	6	74	
	8	82	

DATE September 26, 1972

SIGNED \_\_\_\_\_



# CORE LABORATORIES - CANADA LTD.



325 HOWE STREET - VANCOUVER 1, B.C.

TELEPHONE 688-3504

## CERTIFICATE OF ANALYSIS

REPORT NO.  
**621**

ASSAYERS  
CHEMISTS  
GEOCHEMISTS

SAMPLE(S) FROM

STRATO GEOLOGICAL (PAGE 10)

SAMPLE(S) OF	<u>SAMPLE NO.</u>	<u>Cu ppm</u>
	A 87 103	32 ✓
	12	27 ✓
	14	34 ✓

1263

DATE September 26, 1972

SIGNED \_\_\_\_\_

A P P E N D I X A

REPORT ON A  
MAGNETOMETER SURVEY AND  
GEOCHEMICAL SURVEY  
BY  
STRATO GEOLOGICAL LTD.  
FOR  
SONESTA RESOURCES LTD.  
534-789 W. Pender St.  
Vancouver , B.C.  
on the  
NEUMAN 1-20 Mineral Claims  
Lac Le Jeune  
Kamloops Mining Division.



## 1. Summary and Conclusions:

A survey consisting of linecutting , soil sampling , and a magnetometer survey was conducted by Strato Geological Ltd. on the Neuman 1-20 Mineral Claims situate near Lac Le Jeune in the Kamloops Mining Division. The property is accessible through back roads from the Kamloops to Logan Lake road, near the Lac Le Jeune turn-off.

A grid was established with parallel baselines along the location lines , with tie-lines at 200 foot intervals and stations marked off at 100 foot intervals. Subsequently a soil sampling crew sampled the grid at two hundred foot intervals , with samples taken from the 'B' horizon , and a Sabre Fluxgate magnetometer was used to survey the grid at one hundred foot intervals. A total of 29 miles were cut , picketed , and ribboned . A total of 743 samples were taken and assayed for copper by Core Laboratories of Vancouver. The high assay was 187 p.p.m. with a background of 35 p.p.m. The magnetometer survey indicated a high of +398 gammas and a low -1235 gammas with a background of -650 gammas.

## 2. Introduction:

At the request of Sonesta Resources Ltd. , Strato Geological conducted a magnetometer and geochemical survey over the Neuman 1-20 mineral claims as recommended in a report by Mr. Don Tully , Professional Engineer , dated April 24, 1972. The purpose of the survey was to investigate the possibility of copper mineralization on the property.

The duration of the program was from August 25, 1972 to September 17, 1972. Personnel conducting the survey consisted of Uno Leis (General Manager), Edward Thorburn (Operations Manager & Geophysical Operator), Phillip Finchuk, Alfred Hicks, and Peter Home , ( Line Cutters & Soil Samplers ).

### 3. Work Performed:

Soil samples were taken from the 'B' horizon at 200 foot intervals, at marked stations, placed into Kraft soil sample bags and transported to Core Laboratories of Vancouver. The method of analysis was as follows:

- Samples dried at approximately 125<sup>o</sup>F.
- Crushed & sieved to -80 mesh.
- Weighed into test tubes.
- Digested with perchloric-nitric acid.
- Analyzed by atomic absorption spectrophotometer,

The results of the survey are included in the enclosed map with copper assays in parts per million.

The magnetometer survey was carried out by Mr. Edward Thorburn. The instrument used was a Sabro Magnetometer, which is a fluxgate self-levelling unit with a digital readout which is converted to gammas by a factor of 40. Readability of the instrument is roughly 20 gammas. The survey was initially completed along the baselines, which were corrected for diurnal fluctuation. Subsequently the tie-lines were surveyed, with readings taken at the baseline, where readings had been previously taken and corrected, to adjust for diurnal fluctuation and drift. These readings, in gammas, are plotted on the enclosed map.

This report is prepared from the data obtained from the field survey carried out by Strato Geological Ltd. crews and from personal examination of the property.

STRATO GEOLOGICAL LTD.

Dated: Dec. 1, 1974.

*Eric Lee*  
Eric Lee - Manager

The exploration program on the Neuman 1-20 minerals claims was completed for Sonesta Resources Ltd. by STRATO GEOLOGICAL LTD. on a contract basis. The following expenses were invoiced to Sonesta Resources Ltd.

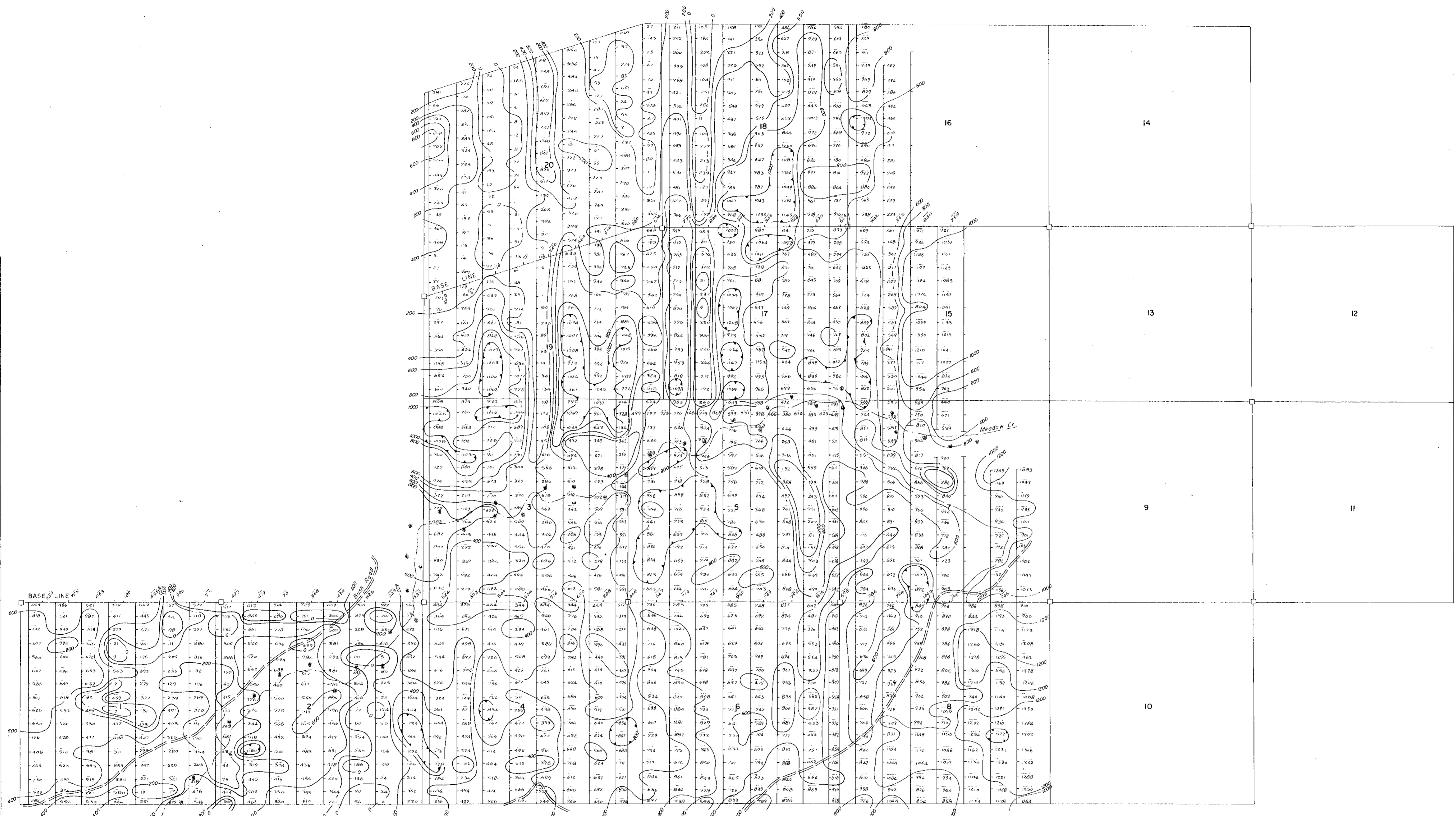
Linecutting	1900.00
Magnetometer Survey	2500.00
Geochemical Survey	1500.00
	<hr/>
Total Cost	5900.00

Signed,

STRATO GEOLOGICAL LTD.

Uno Leis  
UNO LEIS- Director

Dec. 1, 1972.



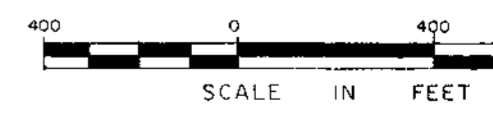
**LEGEND**

- MAGNETIC DEPRESSION CONTOUR
- MAGNETOMETER READINGS ( $\pm$  Gamma)
- CONTOUR INTERVAL 200 Gamma
- ROAD
- CREEK
- SWAMP
- CLAIM POST

SONESTA RESOURCES LTD.  
 NEUMAN CLAIM GROUP  
 LAC LE JEUNE AREA, KAMLOOPS MINING DIVISION

**MAGNETOMETER SURVEY** Department of  
 Mines and Petroleum Resources

ASSESSMENT REPORT

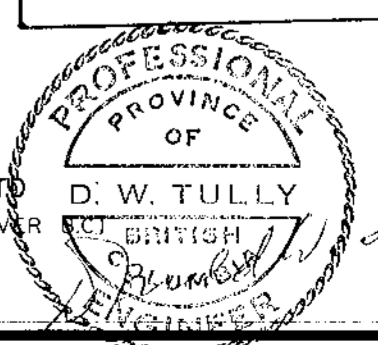


NO. 4224 MAP #4

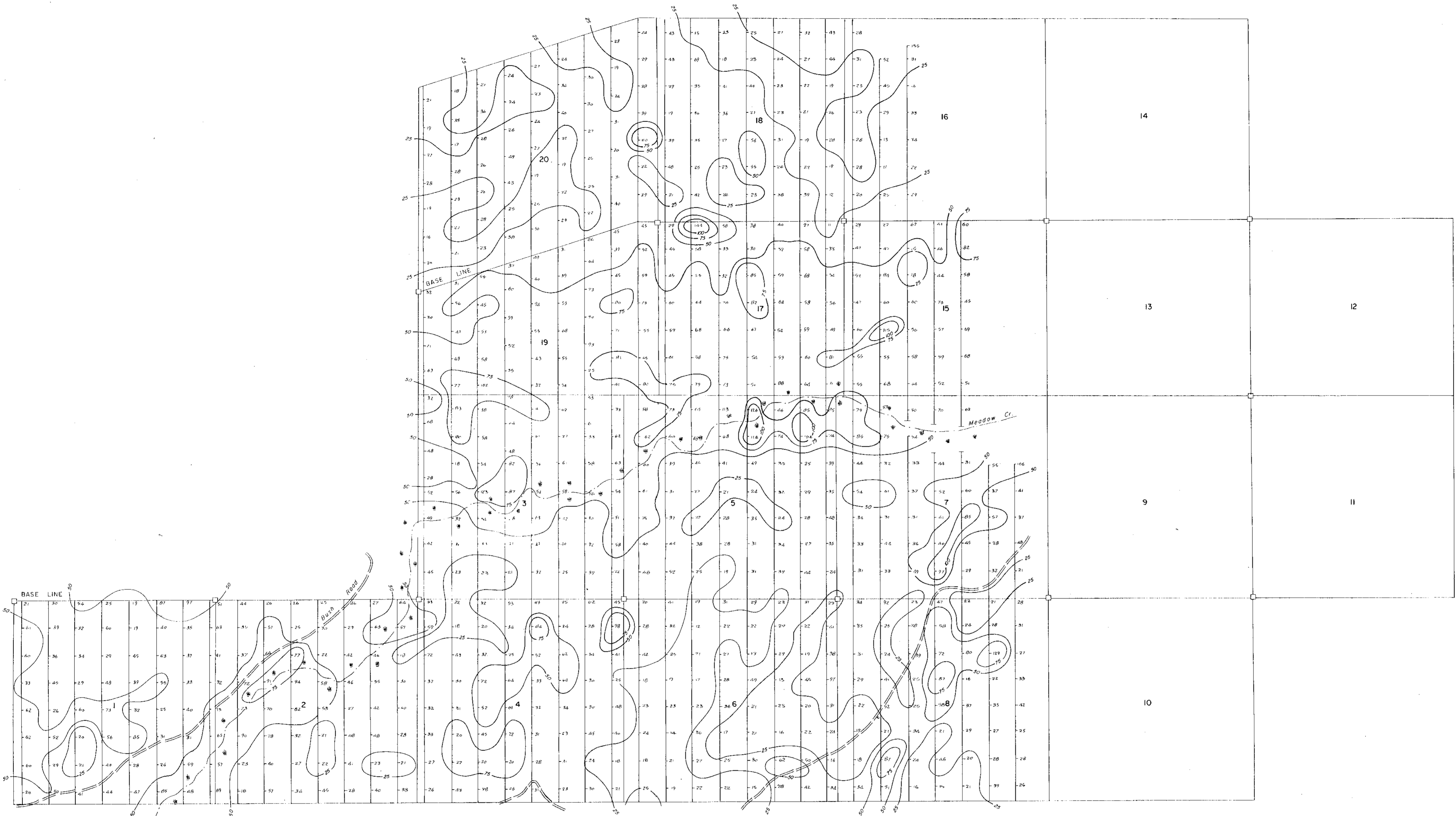
OCTOBER 1, 1972



SURVEY BY  
 STRATO GEOLOGICAL LTD.  
 (19-448 SEYMOUR ST., VANCOUVER)



*D. W. Tully*



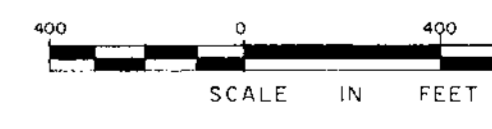
**LEGEND**

- 48 SOIL GEOCHEMISTRY (ppm Copper)
- CONTOUR INTERVAL (25 ppm)
- == ROAD
- CREEK
- ≡ SWAMP
- CLAIM POST

SONESTA RESOURCES LTD  
 NEUMAN CLAIM GROUP  
 LAC LE JEUNE AREA, KAMLOOPS MINING DIVISION

**GEOCHEMICAL SURVEY** Department of  
 Mines and Petroleum Resources

4224 M-5



ASSESSMENT REPORT  
 NO. 4224 MAP # 5

OCTOBER 1, 1972



SURVEY BY  
 STRATO GEOLOGICAL LTD  
 (19-448 SEYMOUR ST., VANCOUVER)

