

4267

GEOCHEMICAL REPORT ON THE

SS CLAIMS ON BALDY MTN.

LONG: 120°02' LAT: 51°28'

KAMLOOPS M.D.

92 P / 8E

WORK DONE BETWEEN

JULY 15 AND AUGUST 20, 1972.

BY R. WOLFE, P.ENG.

NOVEMBER 30, 1972.

Department of
Mines and Petroleum Resources
ASSESSMENT REPORT

NO. 4267 MAP

TABLE OF CONTENTS

	<u>Page</u>
INTRODUCTION	1
LOCATION AND ACCESS	1
LINE GRID	1
GEOCHEMICAL SOIL SURVEY	
a) SOIL DEVELOPMENT	1
b) FIELD PROCEDURE	1
c) ANALYTICAL PROCEDURE	2
d) RESULTS	2
CONCLUSIONS AND RECOMMENDATIONS	2

FIGURES

#11. Cumulative frequency percent curve	3
#22. Claims, Grid, and Topography	In Back Pocket
#33. Geochemical Soil Survey Pb.	" " "
#44. Geochemical Soil Survey Mo.	" " "

APPENDIX

I Cost Breakdown

INTRODUCTION

The following report describes the results of a soil survey on the SS claims during the summer of 1972. The work was done under contract to Versatile Mining Services of Kamloops as part of the recommendations set forth in a report by the writer on the SS claims dated August 1, 1970.

LOCATION AND ACCESS

The property is located about 50 miles north of Kamloops, B.C. at long: $120^{\circ}02'$ and lat: $51^{\circ}28'$.

Access is good by 2-wheel drive road from Little Fort on Highway #5 to Dunn Lake and from there by 4-wheel drive road to the Baldy Mtn. Fire Lookout (about 1200' west of the claims.

LINE GRID

An E-W base line was established at the south end of the claims and N-S trending lines were chained and marked every 100 feet. Line spacing was 500 feet.

GEOCHEMICAL SOIL SURVEY

a) Soil Development

The soil consists of glacial and talus derived material with poorly developed A and B horizons.

b) Field Procedure

The soil was collected every 100 feet on all lines and placed in a brown paper envelope. Topography readings were taken at each station

with an altimeter for survey control. Wherever possible the B horizon was collected.

c) Analytical Procedure

All samples were analyzed by Kamloops Research and assay Laboratory Ltd. for Cu., Mo., Pb., Zn. by atomic absorption after sieving to the -80 mesh fraction and digestion by HClO_4 and HNO_3 .

d) Results

Copper and Zinc showed only background values. Lead was found to be anomalous in some areas although the amount of anomalous samples did not allow for statistical treatment. 50-100 p.p.m. Lead was considered anomalous and over 100 p.p.m. highly anomalous. For Molybdenum a cumulative frequency curve (fig. 1) showed over 13 p.p.m. Mo. to be anomalous.

CONCLUSIONS AND RECOMMENDATIONS

A large Mo. anomaly was outlined in the soil on the southern half of the property (fig. 4).

A lead anomaly with values over 100 p.p.m. occurs in the west part of the claims. Some small isolated lead anomalies were found scattered at various points throughout the grid area. Since early snowfall prevented the examination of the anomalous areas in the field, no recommendations can be made until such examination can be made early next summer.

Respectfully submitted



R. Wolfe, P.Eng.

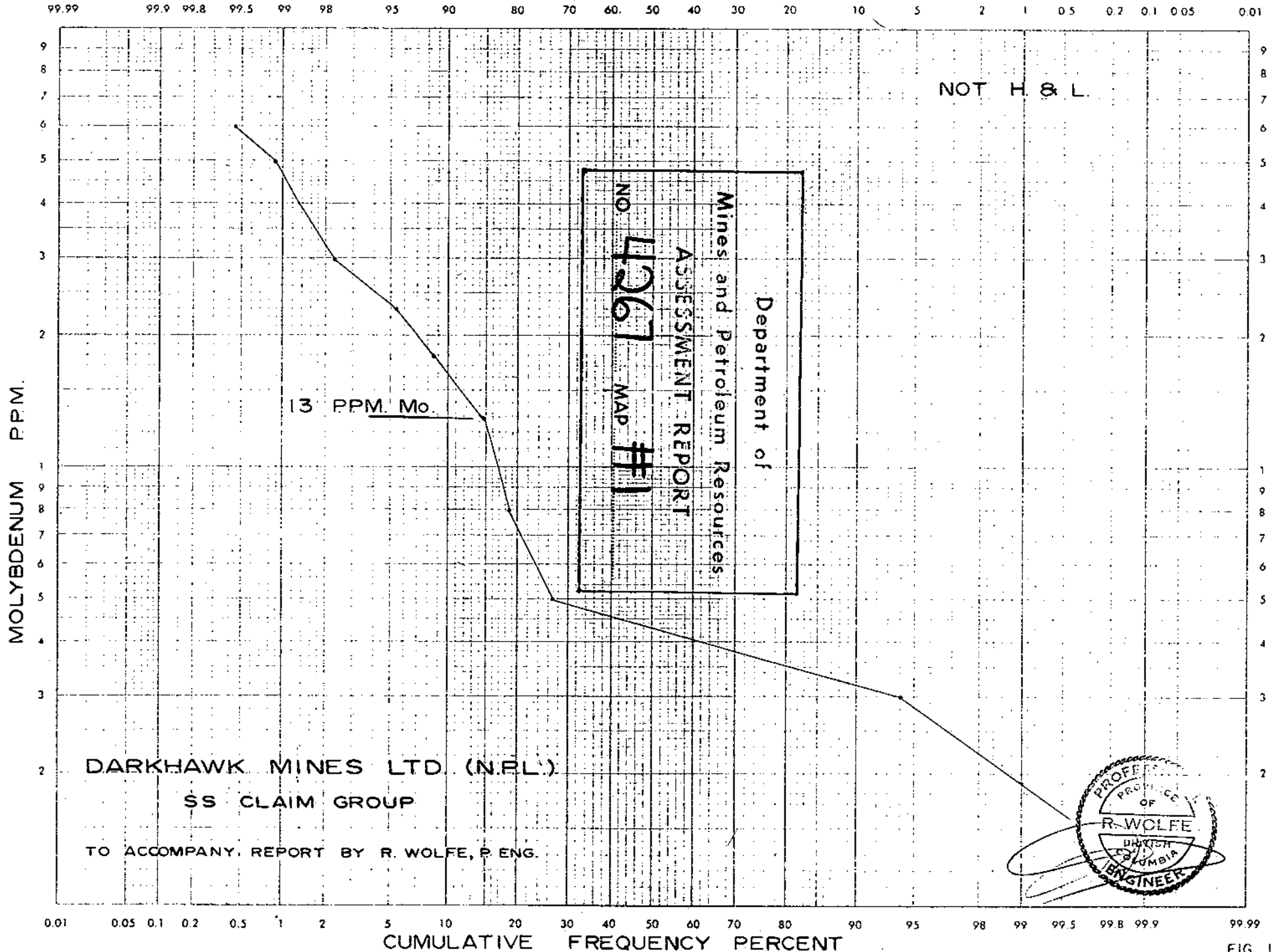


FIG. 1.

APPENDIX I

COST BREAKDOWN

Establishing a line control grid
Soil Sampling and analysis, topography control
under contract to Versatile Mining Services,
P.O. Box 609, Kamloops B.C. \$9,864.00

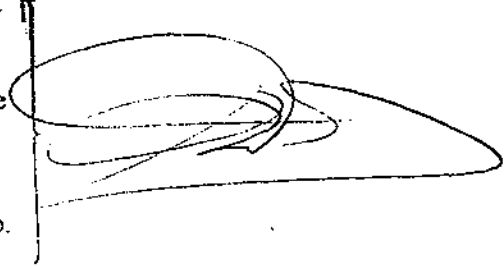
Interpretation of geochemical data
R. Wolfe, P.Eng. - Sept. 20 (½), 21, 22
2½ days @ \$100.00 250.00

Report: R. Wolfe, P.Eng. -
Nov. 24, 27, 28, 29
4 days @ \$100.00 400.00

Drafting, typing, printing, copying 170.00

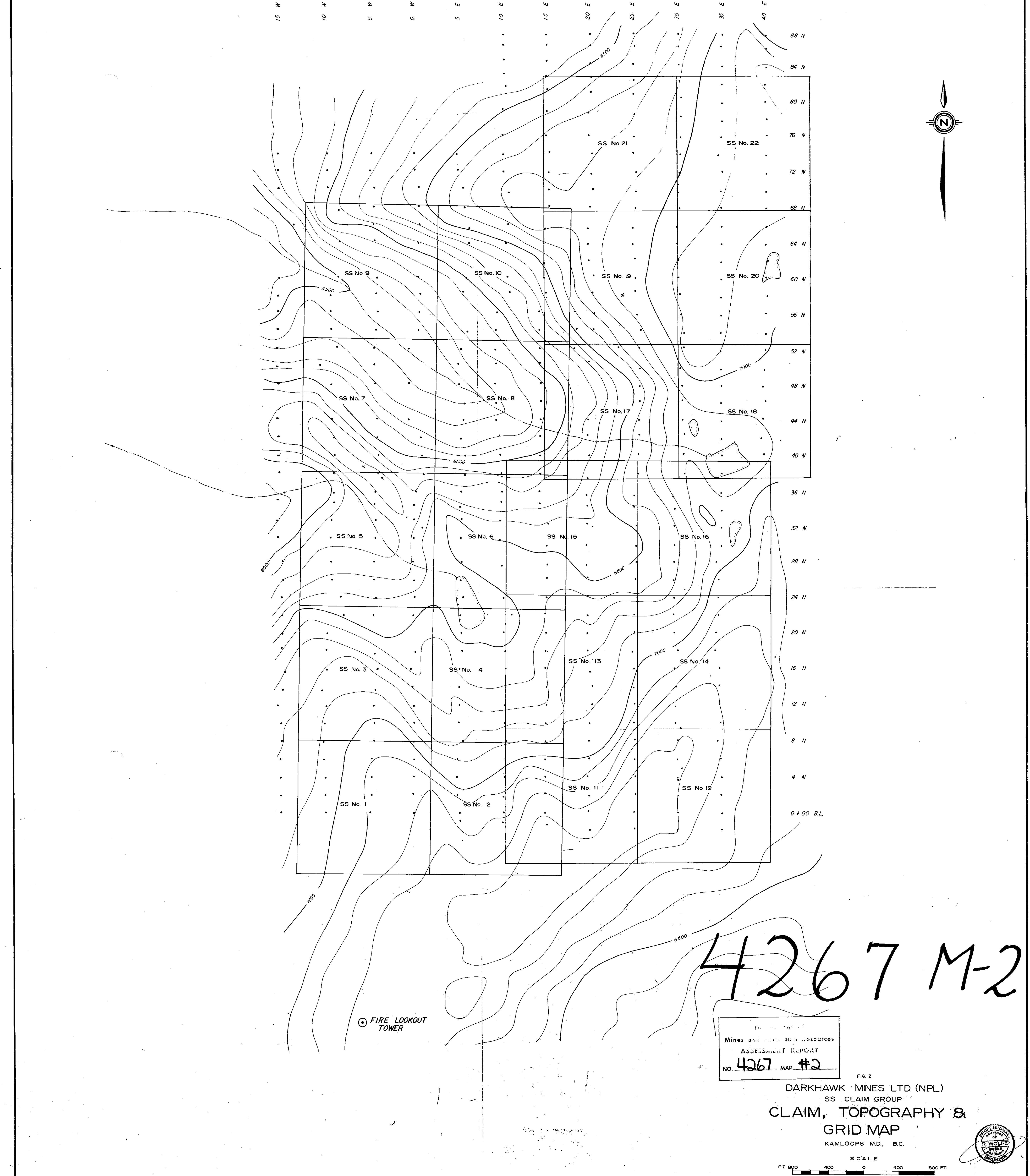
\$10,684.00

Declared before me at the *City*
of *Vancouver*, in the
Prov. of *British Columbia*, this *26*
day of *April* 1973, A.D.



John Turner
A Commissioner for taking Affidavits in the Province of British Columbia or
A Notary Public in and for the Province of British Columbia.

Sub-mining Recorder



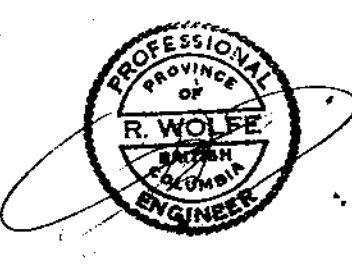
4267 M-2

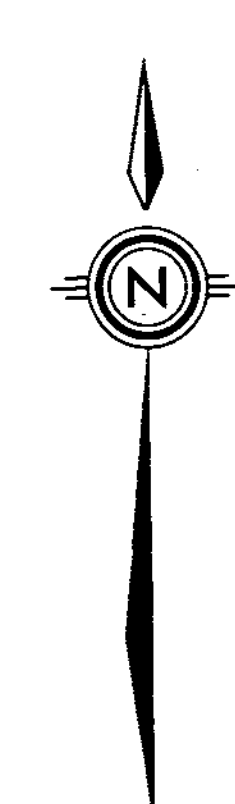
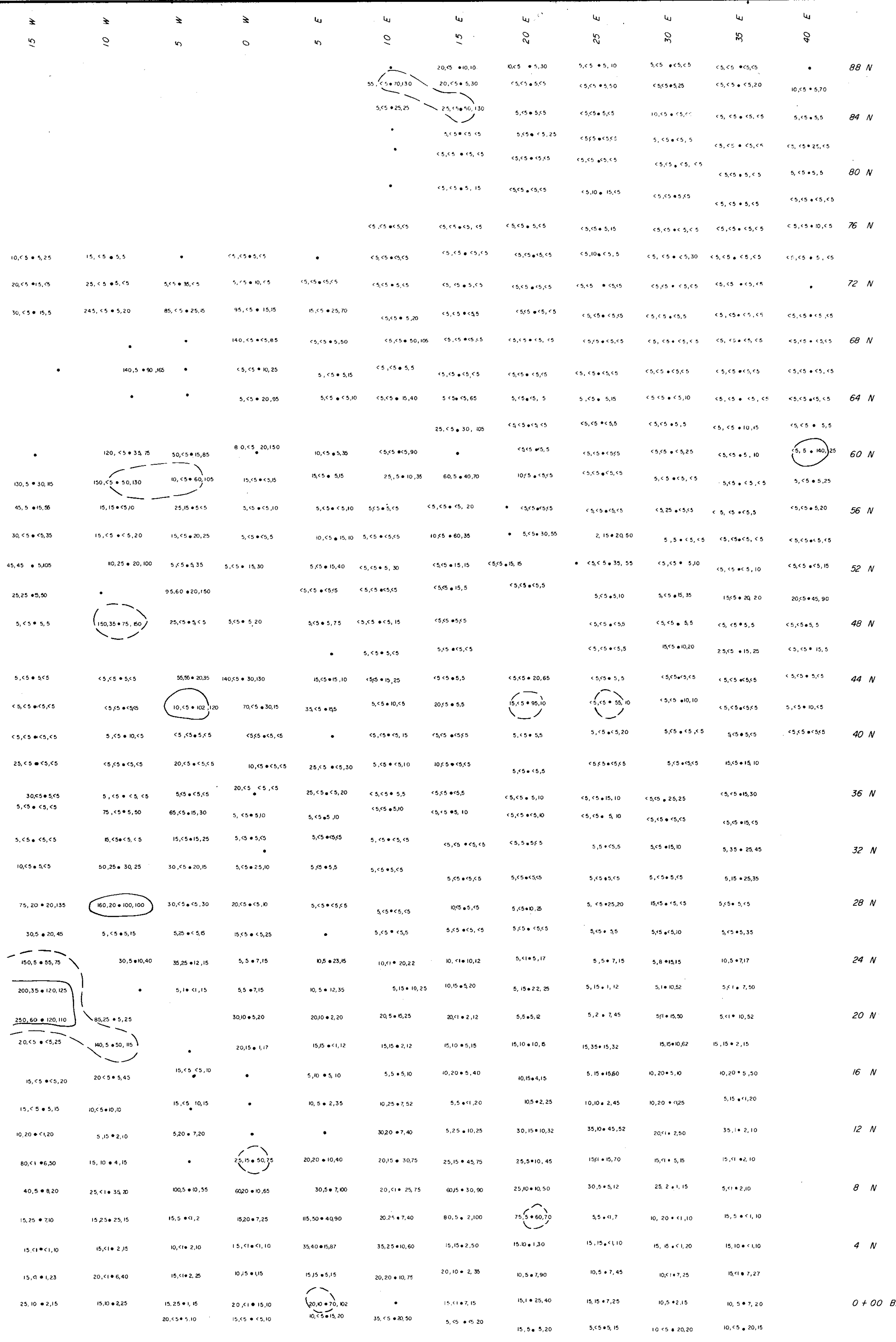
⊙ FIRE LOOKOUT TOWER

Mines and mineral resources
ASSESSMENT REPORT
NO. 4267 MAP #2

FIG. 2
DARKHAWK MINES LTD (NPL)
SS CLAIM GROUP
CLAIM, TOPOGRAPHY &
GRID MAP
KAMLOOPS MD., B.C.

SCALE
FT. 800 400 0 400 800 FT.



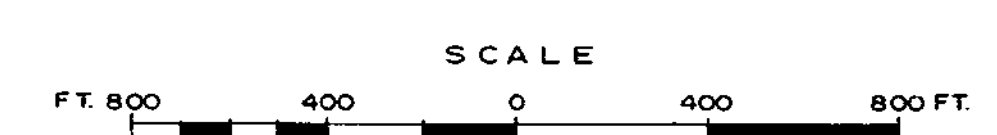


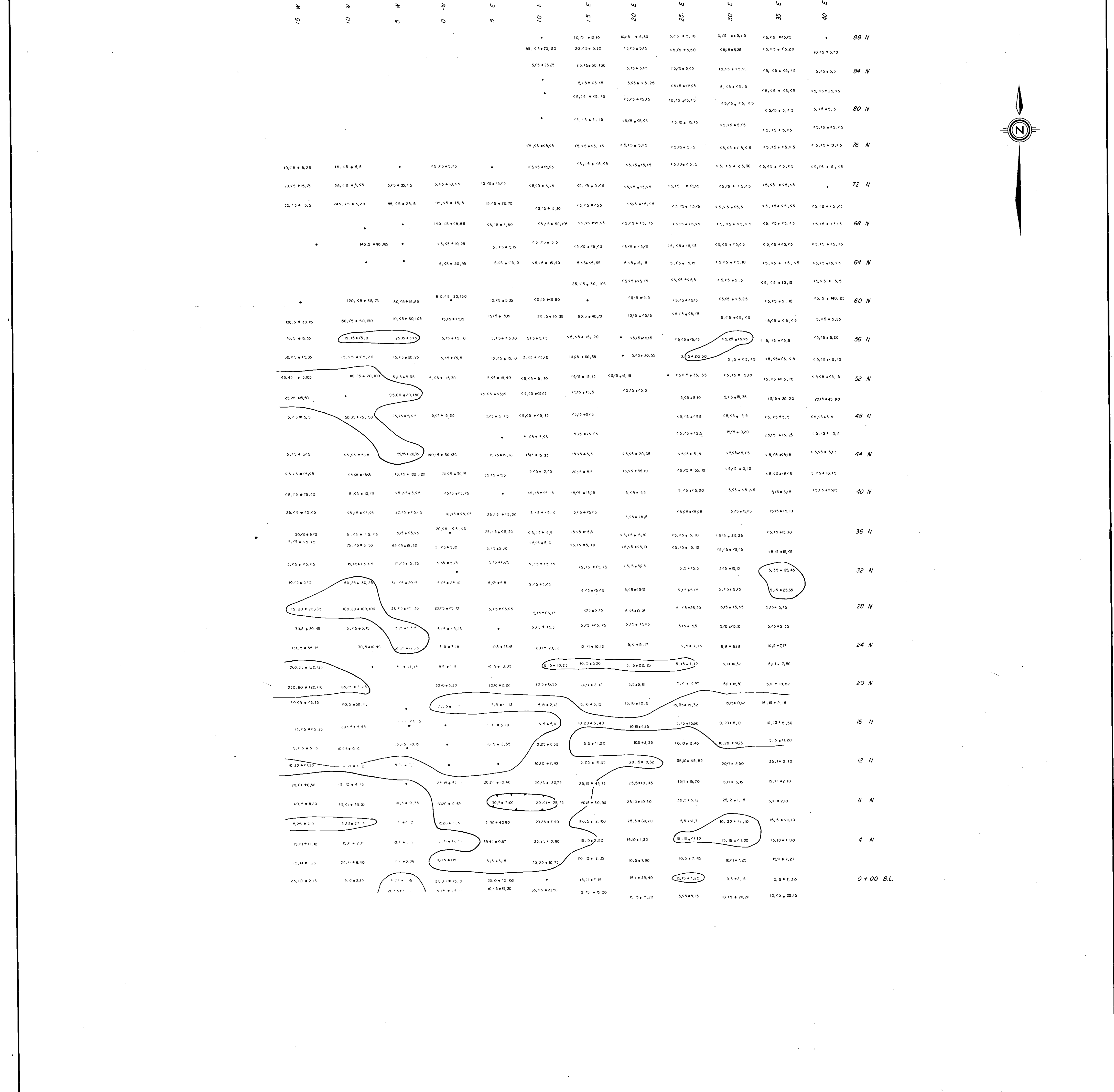
LEGEND

SAMPLE LOCATION
 Cu, Mo, Pb, Zn 15, 10 + 2, 25
 50-100 ppm Pb
 100 ppm Pb

Department of
 Mines and Petroleum Resources
 ASSESSMENT REPORT
 NO. 4267 MAP. #3

FIG 3
 DARKHAWK MINES LTD. (NPL)
 SS CLAIM GROUP
GEOCHEMICAL SOIL SURVEY
 LEAD IN PPM.
 KAMLOOPS M.D., BC.





LEGEND
 SAMPLE LOCATION
 Cu, Mo * Pp, Zn 15,10 * 2,25
 15 ppm Mo

Department of
 Mines and Petroleum Resources
 ASSESSMENT REPORT
 NO. 4267 MAP #4

FIG. 4
 DARKHAWK MINES LTD. (NPL)
 SS CLAIM GROUP
 GEOCHEMICAL SOIL SURVEY
 MOLYBDENUM IN PPM.
 KAMLOOPS MD., BC.

SCALE
 FT. 800 400 0 400 800 FT.