

4281

GEOCHEMICAL REPORT

HEN 1 GROUP OF MINERAL CLAIMS

CANEX PLACER LIMITED, ENDAKO MINES DIVISION

OMINECA MINING DIVISION

ENDAKO, B. C.

(Latitude $54^{\circ} 15'$, Longitude 125°)

Field work undertaken during period
23 May 1972 - 20 September 1972

G. D. Bysouth

Department of	February 6, 1973
Mines and Petroleum Resources	
ASSESSMENT REPORT	
NO. 4281	MAP.....

TABLE OF CONTENTS

	<u>Page</u>
Introduction	1
Summary	1
Mineral Claim Group	1
Topography and Access	1
General Geology	1
Survey Control	2
Soil Geochemical Survey	
Introduction	2
Sampling	2
Assay Method	2
Results	3
Statement of Expenses	3
Conclusion	4

Appendices:

	I	Certification	
	II	Statement of Qualification	
#1	III	Mineral Claim Map, 1" = ½ mile	
#2	IV	Soil Geochemical Survey Map: Lead, 1" = ¼ mile	
#3	V	Soil Geochemical Map: Zinc, 1" = ¼ mile	
#4	VI	Soil Geochemical Map: Silver, 1" = ¼ mile	
#5	VII	Soil Geochemical Map: Copper, 1" = ¼ mile	
#6	VIII	Soil Geochemical Map: Molybdenum, 1" = ¼ mile	
	IX	Declaration for Statement of Expenses	
#7		Location Map 1"=4mi.	

INTRODUCTION

A soil geochemical survey was conducted over the Hen 1 Group of Mineral Claims during the period 23 May to 20 September 1972. The work was undertaken as part of commitments for assessment work on mineral claims which are owned by Canex Placer Limited, Endako Mines Division (formerly Endako Mines Limited). The claims are located in the Hanson Lake area approximately 12 miles northwest of Endako Village.

SUMMARY

A total of 360 soil samples were collected and assayed for molybdenum, copper, lead, zinc and silver. Several samples were found to be anomalous but no significantly anomalous areas were outlined.

MINERAL CLAIM GROUP

The Hen 1 Group of Mineral Claims consists of 28 full-sized mineral claims and one fractional mineral claim. The property is geographically located 12 miles northwest of Endako Village in the Omineca Mining Division at Latitude 54° 15' N, Longitude 125° W.

Details of the Hen 1 Group mineral claims are as follows:

<u>Mineral Claims</u>	<u>Record Numbers</u>	<u>Record Date</u>
Hen 1 - 11	111113 - 111124	June 2, 1972
Hen 13 Fraction	111125	June 2, 1972
Hen 14 - 29	111126 - 111141	June 2, 1972

TOPOGRAPHY AND ACCESS

The Hen 1 Group of Mineral Claims lies within two contrasting topographical environments. Mineral Claims Hen 11 to 29 cover a poorly drained, partly swampy terrain which slopes gently to the northwest at angles seldom exceeding five degrees. The rest of the claim group lies along the south side of Shovel Creek valley over a well-drained hilly terrain generally sloping to the south at five to twenty degrees.

Present access is provided by a twelve-mile long four-wheel drive road which extends from Duncan Creek to about ½ mile east of the claim group. Previous to the construction of this road, which was completed in July 1972, the claims were accessible only by helicopter.

GENERAL GEOLOGY

No rock exposures were encountered within the claim group. Outcrops of granitic rock correlative with the Topley Intrusions of Middle and Upper Jurassic age occur about ½ mile to the east. Tertiary basalt of the Endako Group is exposed approximately two miles to the west.

SURVEY CONTROL

Aerial photographs on the scale one inch to approximately $\frac{1}{2}$ mile were used for ground location control. Grid lines were established by chain and compass.

SOIL GEOCHEMICAL SURVEY

Introduction

A soil geochemical survey was conducted over the entire claim group. Samples were collected at 200-foot intervals along lines spaced 700 to 1,000 feet apart. Most of the lines were run in east-west directions and connected at the ends by short north-south control lines.

The claims appear to be underlain by a combination of glacial till, ablation moraine and sandy outwash. The outwash occurs in thick deposits along the lower slopes of Shovel Creek valley where it forms a terrain covered by open jack pine forests and marked by various kettles, terraces and abandoned drainage channels. Deposits of glacial till and ablation moraine are interpreted to cover the remainder of the claim group; this type of overburden supports a mixed forest of jack pine, mature spruce and second growth balsam. In a general way the amount of jack pine decreases towards the north in response to increasingly poor drainage conditions.

Soil development is considered to be poor. In most cases however, the B-horizon was distinct enough to be sampled. The best soil development occurs over well-drained sandy outwash.

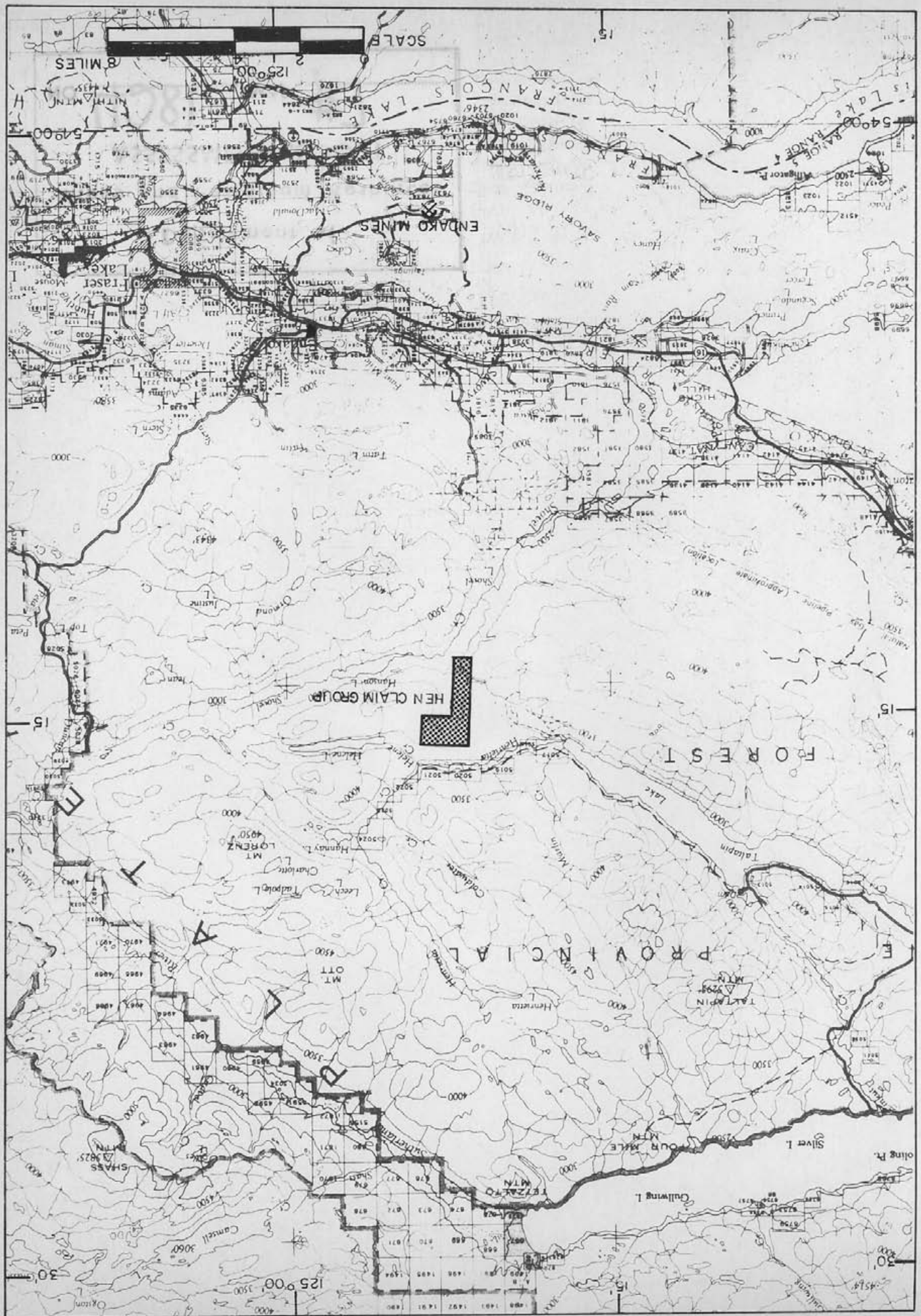
Sampling

Soil samples averaging about 150 grams were collected from small holes which were dug to depths of at least four to six inches below the upper humus. Wherever possible the B-horizon, or a combination of the B- and C-horizons, was sampled.

Assay Method

All soil samples were assayed for Mo, Cu, Pb, Zn and Ag content by Canex Placer Limited Geochemical Laboratory at Vancouver, B. C.

Samples were dried in a hot air dryer, then sifted in -80 mesh nylon sieves. Portions of -80 mesh fractions were weighed with a precision torsion balance. One portion of each sample was then digested in a mixture of hot perchloric and nitric acid, and prepared for analysis by atomic absorption spectrophotometry. A Perkin-Elmer 403 instrument was used for analysis of molybdenum, copper, lead, and zinc. Another portion of each sample was digested in boiling nitric acid, then water and 20 percent T.O.T.P. dissolved in heptane was added. This solution was shaken and centrifuged prior to analysing for silver by atomic absorption.



Results

Soil sample analyses indicate no significant anomalous areas. Three consecutive soil samples form a weak lead anomaly near the center of the claim group; because of its limited area and low metal content, this anomaly is not considered significant. Weakly anomalous concentrations of either lead, zinc, silver, copper or molybdenum were found in several soil samples; these samples appear randomly distributed throughout the claim group, and therefore do not constitute significant anomalies.

STATEMENT OF EXPENSES

The following expenses were incurred by Canex Placer Limited, Endako Mines Division for conducting a soil geochemical survey over the Hen 1 Group of Mineral Claims.

<u>Personnel</u>	<u>Period Employed</u>	<u>Time and Rate</u>	<u>Cost</u>
P. Buckley	9 Aug. 1972	11 hrs. @ \$3.62	\$39.82
G. D. Bysouth	20 Sept. 1972	9 hrs. @ 6.50	58.50
A. J. Peters	9, 21-24 Aug/72; 20 Sept. 1972	54 hrs. @ 4.50	243.00
S. Wilson	21, 23 Aug./72	21 hrs. @ 3.62	76.02
E. Naesgaard	22, 24 Aug./72	23 hrs. @ 3.53	81.19
D. Sargent	23 May 1972	10 hrs. @ 3.53	35.30
E. T. Kimura	23 May 1972	10 hrs. @ 8.25	<u>82.50</u>
			\$ 616.33
Office overhead @ 15% on wages			99.18
<u>Transportation Costs</u>			
1) Alpine Helicopters Ltd.			
	Bell 47 G3 B1 helicopter; 1 hr. 50 min.	@ 150.00/hr.	275.00
2) Vehicle Costs: 6 days @ \$25.00/day			150.00
<u>Map Compilations</u>			
A. J. Peters	22 hrs.	@ \$4.50	99.00
<u>Camp Operation Costs</u>			
G. D. Bysouth	1 day		
A. J. Peters	6 days		
P. Buckley	1 day		
S. Wilson	2 days		
E. Naesgaard	2 days		
Total of 12 man-days @ \$8.00			96.00
<u>Geochemical Assay Costs</u>			
Determinations for Mo, Pb, Zn, Cu, Ag			
360 Samples @ \$4.50/sample			<u>1,620.00</u>
<u>TOTAL GEOCHEMICAL SURVEY EXPENDITURE</u>			<u>\$2,955.51</u>

CONCLUSION

The soil geochemical survey indicated no significant anomalous areas on the Hen 1 Group of Mineral Claims.

Submitted by:

G. D. Bysouth

G. D. Bysouth
Exploration Geologist
Canex Placer Limited
Endako Mines Division

GDB/sat

APPENDICES

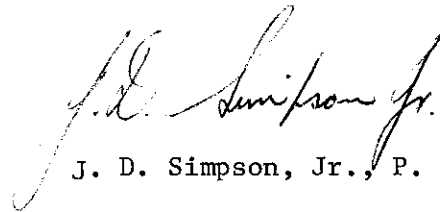
- I Certification
- II Statement of Qualification
- III Mineral Claim Map, 1" = $\frac{1}{2}$ mile
- IV Soil Geochemical Survey Map: Lead, 1" = $\frac{1}{4}$ mile
- V Soil Geochemical Survey Map: Zinc, 1" = $\frac{1}{4}$ mile
- VI Soil Geochemical Survey Map: Silver, 1" = $\frac{1}{4}$ mile
- VII Soil Geochemical Survey Map: Copper, 1" = $\frac{1}{4}$ mile
- VIII Soil Geochemical Survey Map: Molybdenum, 1" = $\frac{1}{4}$ mile
- IX Declaration for Statement of Expenses

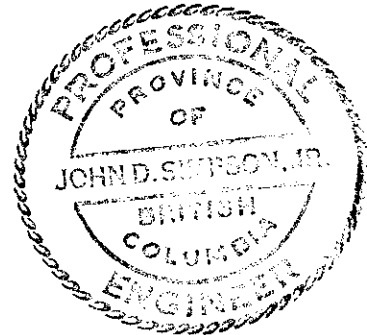
APPENDIX I

CERTIFICATION

I, J. D. Simpson Jr. of Canex Placer Limited, Endako Mines Division, Endako, B. C., do hereby certify that:

1. I am a registered Professional Engineer in the Province of British Columbia.
2. I have carefully reviewed the data and examined the report of G. D. Bysouth on exploration work which was undertaken during the period 23 May to 20 September 1972, on the Hen 1 Group of Mineral Claims. The mineral claims are owned by Canex Placer Limited, Endako Mines Division, and are located in the Omineca Mining Division near Endako, B. C. (Latitude $54^{\circ} 15'$, Longitude 125°)
3. To the best of my knowledge the interpretation of data, conclusions and expenditures which are claimed for the performance of work are valid.


J. D. Simpson, Jr., P. Eng.

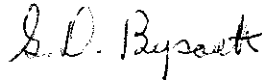


APPENDIX II

STATEMENT OF QUALIFICATION

I, G. D. Bysouth of Canex Placer Limited, Endako Mines Division, Endako, B. C. do hereby certify that:

1. I am a geologist.
2. I am a graduate of the University of British Columbia with a B. Sc. degree in Geology in 1966.
3. From 1966 until the present I have been engaged in mining geology and exploration geology in British Columbia.
4. I personally supervised and participated in the field work and have reviewed and assessed the data resulting from this work.


G. D. Bysouth

DOMINION OF CANADA:

PROVINCE OF BRITISH COLUMBIA:

To Wit:

~~For the purpose of~~

expenditures for Geochemical Survey on Hen 1 Group of Mineral Claims during the period 23 May to 20 September 1972.

I, G. D. Bysouth

of Canex Placer Limited, Endako Mines Division, Endako, B. C.

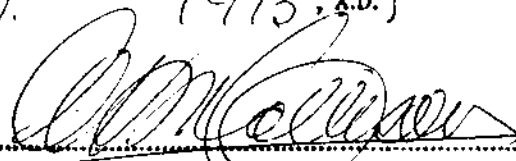
in the Province of British Columbia, do solemnly declare that the following expenses were incurred by Canex Placer Limited, Endako Mines Division for conducting a soil geochemical survey over the Hen 1 Group of Mineral Claims.

<u>Personnel</u>	<u>Period Employed</u>	<u>Time and Rate</u>	<u>Cost</u>
P. Buckley	9 Aug. 1972	11 hrs. @ \$3.62	\$39.82
G. Bysouth	20 Sept. 1972	9 hrs. @ 6.50	58.50
A. J. Peters	23 Sept. 1972; 9, 21-24 Aug. 1972; 20 Sept. 1972	64 hrs. @ 4.50	288.00
S. Wilson	21, 23 Aug. 1972	21 hrs. @ 3.62	76.02
E. Naesgaard	22, 24 Aug. 1972	23 hrs. @ 3.53	81.19
D. Sargent	23 May 1972	10 hrs. @ 3.53	35.30
E. T. Kimura	23 May 1972	10 hrs. @ 8.25	<u>82.50</u>
			\$ 661.33
Office overhead @ 15% on wages			99.18
Helicopter Transportation: 1 hr. 50 min. @ \$150.00/hr.			275.00
Vehicle Costs: 6 days @ \$25.00/day			150.00
Map compilations: A. J. Peters 22 hrs. @ \$4.50			99.00
Camp operation costs:			
G. D. Bysouth	1 day		
A. J. Peters	6 days		
P. Buckley	1 day		
S. Wilson	2 days		
E. Naesgaard	2 days	Total 12 days @ \$8.00	96.00
Geochemical Assay Costs: 360 samples @ \$4.50/sample			<u>1,620.00</u>
<u>TOTAL GEOCHEMICAL SURVEY EXPENDITURE</u>			<u>\$2,955.51</u>

And I make this solemn declaration conscientiously believing it to be true, and knowing that it is of the same force and effect as if made under oath and by virtue of the "Canada Evidence Act."

Declared before me at the VILLAGE
of BURRAS LAKE, in the
Province of British Columbia, this 2nd
day of May, 1973, A.D.

G. D. Bysouth


A Commissioner for taking Affidavits within British Columbia or
A Notary Public in and for the Province of British Columbia.

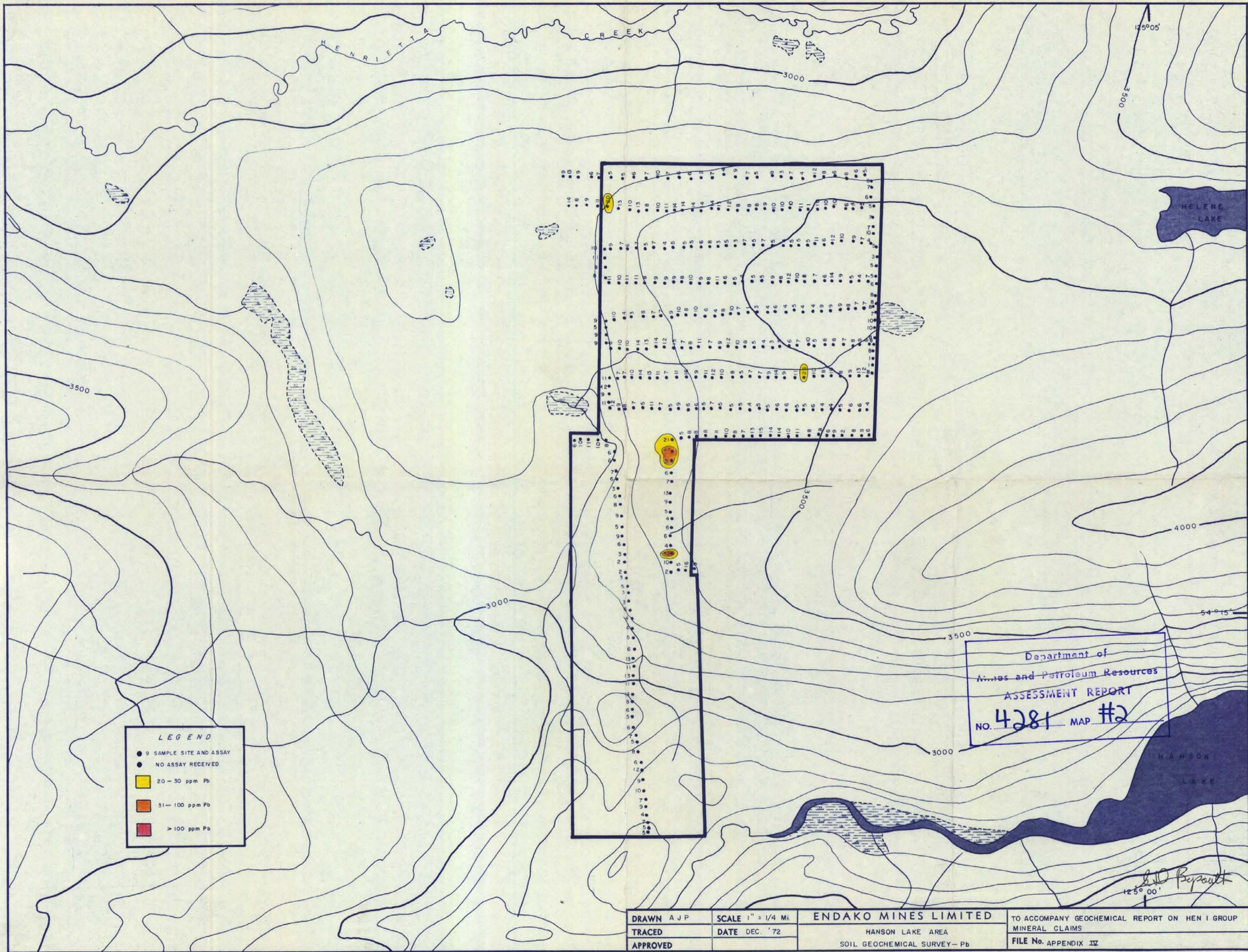


4281 M-1

Department of
 Mines and Petroleum Resources
 ASSESSMENT REPORT
 NO. 4281 MAP #1

DRAWN AJP	SCALE 1" = 1/2 Mi.	ENDAKO MINES LIMITED
TRACED	DATE JAN. '73	HANSON LAKE AREA
APPROVED		

LOCATION MAP - HEN I GROUP MINERAL CLAIMS
 TO ACCOMPANY GEOCHEMICAL REPORT
 FILE No. APPENDIX III



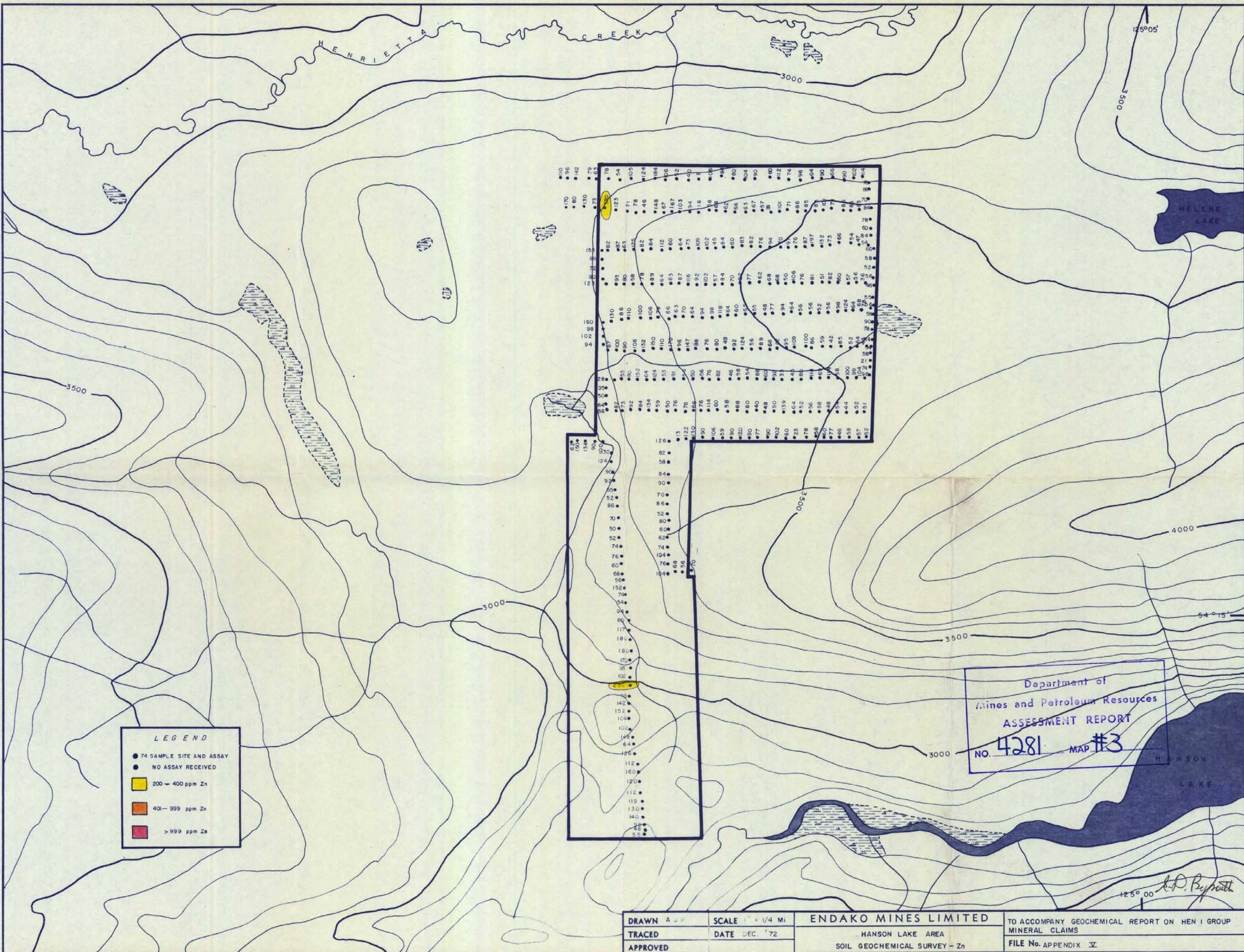
LEGEND

- 9 SAMPLE SITE AND ASSAY
- NO ASSAY RECEIVED
- 20 - 30 ppm Pb
- 31 - 100 ppm Pb
- > 100 ppm Pb

Department of
Mines and Petroleum Resources
ASSESSMENT REPORT
NO. **4281** MAP #2

DRAWN AJP	SCALE 1" = 1/4 Mi.	ENDAKO MINES LIMITED	TO ACCOMPANY GEOCHEMICAL REPORT ON HEN I GROUP MINERAL CLAIMS FILE No. APPENDIX IV
TRACED	DATE DEC. '72	HANSON LAKE AREA	
APPROVED		SOIL GEOCHEMICAL SURVEY - Pb	

L.D. Bypault
125° 00'



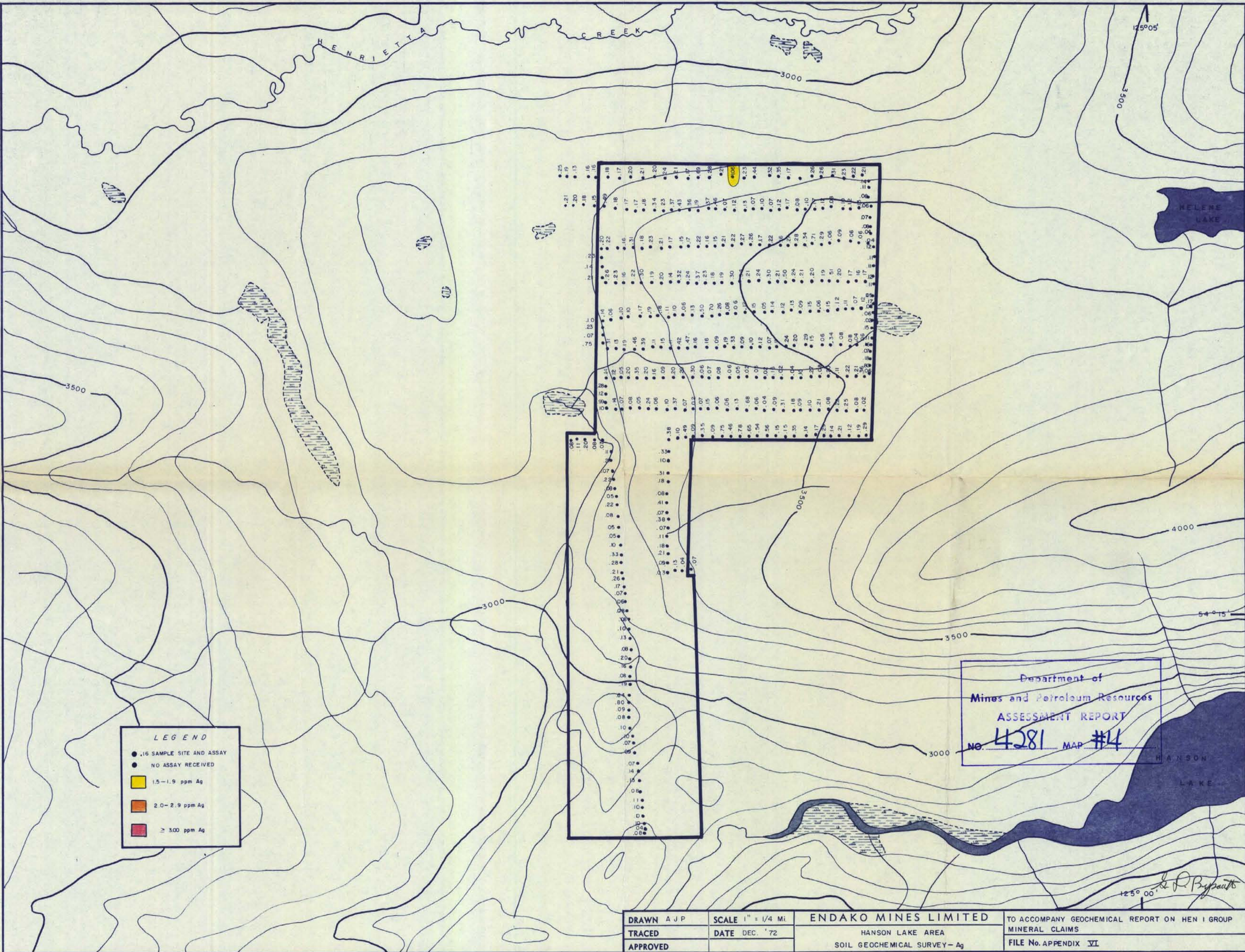
LEGEND

- 74 SAMPLE SITE AND ASSAY
- NO ASSAY RECEIVED
- 200 - 400 ppm Zn
- 401 - 999 ppm Zn
- > 999 ppm Zn

Department of
Mines and Petroleum Resources
ASSESSMENT REPORT
No. 4281 MAP #3

L.D. Byrnes

DRAWN A.J.P.	SCALE 1" = 1/4 Mi.	ENDAKO MINES LIMITED	TO ACCOMPANY GEOCHEMICAL REPORT ON HEN I GROUP MINERAL CLAIMS	
TRACED	DATE DEC. '72			HANSON LAKE AREA
APPROVED				
			FILE No. APPENDIX IV	



LEGEND

- .16 SAMPLE SITE AND ASSAY
- NO ASSAY RECEIVED
- 1.5-1.9 ppm Ag
- 2.0-2.9 ppm Ag
- ≥ 3.00 ppm Ag

Department of
 Mines and Petroleum Resources
 ASSESSMENT REPORT
 No. 4281 MAP #4

DRAWN A J P	SCALE 1" = 1/4 Mi.	ENDAKO MINES LIMITED	TO ACCOMPANY GEOCHEMICAL REPORT ON HEN I GROUP
TRACED	DATE DEC. '72	HANSON LAKE AREA	MINERAL CLAIMS
APPROVED		SOIL GEOCHEMICAL SURVEY - Ag	FILE No. APPENDIX VI

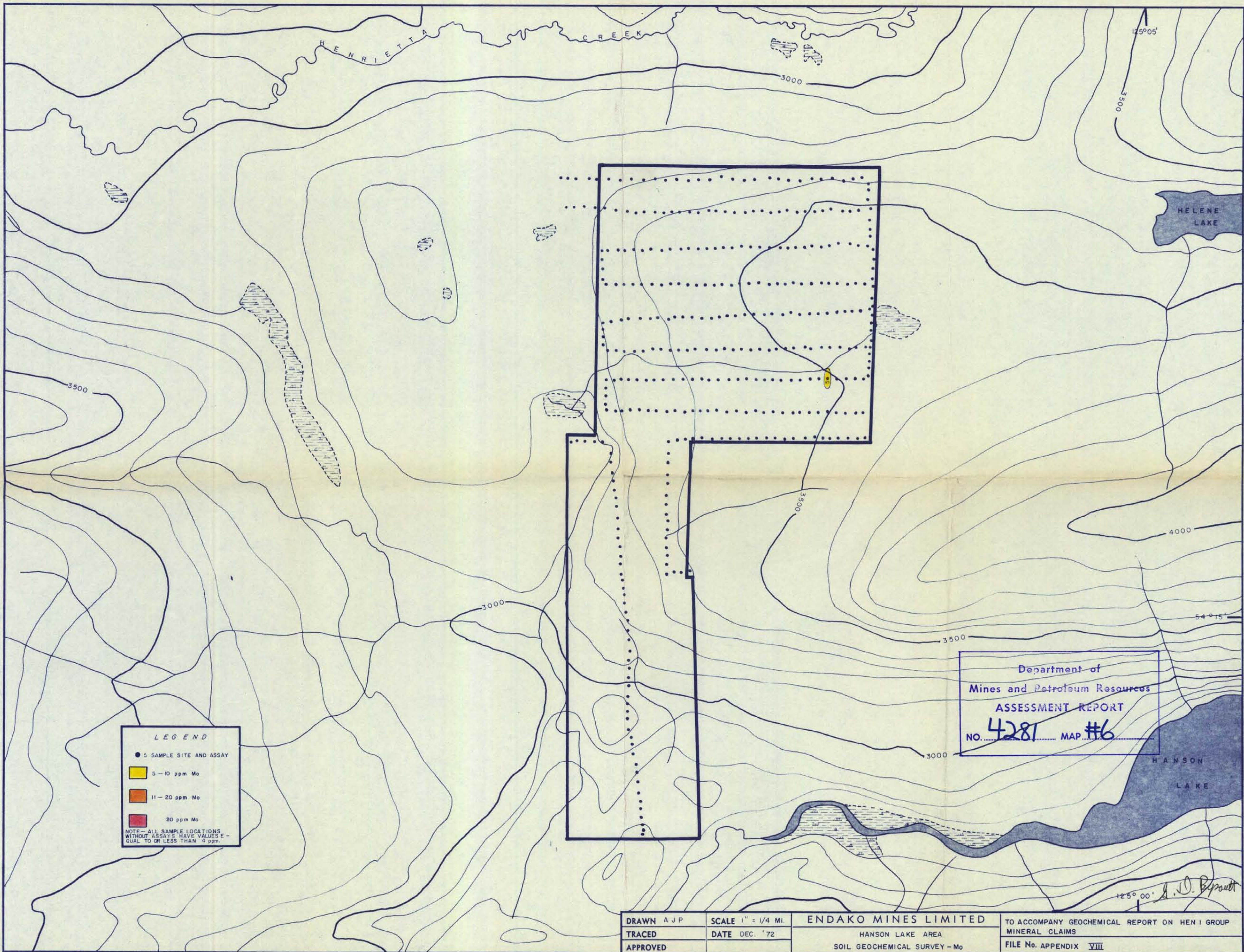


LEGEND

- 16 SAMPLE SITE AND ASSAY
- NO ASSAY RECEIVED
- 80 - 150 ppm Cu
- 151 - 300 ppm Cu
- > 300 ppm Cu

Department of
Mines and Petroleum Resources
ASSESSMENT REPORT
NO. 4281 MAP #5

DRAWN AJP	SCALE 1" = 1/4 MI.	ENDAKO MINES LIMITED	TO ACCOMPANY GEOCHEMICAL REPORT ON HEN I GROUP MINERAL CLAIMS FILE No. APPENDIX VII
TRACED	DATE DEC '72	HANSON LAKE AREA	
APPROVED		SOIL GEOCHEMICAL SURVEY - Cu	



LEGEND

- 5 SAMPLE SITE AND ASSAY
- 5 - 10 ppm Mo
- 11 - 20 ppm Mo
- 20 ppm Mo

NOTE - ALL SAMPLE LOCATIONS WITHOUT ASSAYS HAVE VALUES EQUAL TO OR LESS THAN 5 ppm.

Department of
Mines and Petroleum Resources
ASSESSMENT REPORT
NO. **4281** MAP #**6**

DRAWN A J P	SCALE 1" = 1/4 Mi.	ENDAKO MINES LIMITED	TO ACCOMPANY GEOCHEMICAL REPORT ON HEN I GROUP MINERAL CLAIMS
TRACED	DATE DEC. '72	HANSON LAKE AREA	FILE No. APPENDIX VIII
APPROVED		SOIL GEOCHEMICAL SURVEY - Mo	

J. D. Byrnes