

4284

SOIL GEOCHEMICAL REPORT

HAN 135 GROUP OF MINERAL CLAIMS

CANEX PLACER LIMITED
ENDAKO MINES DIVISION

OMINECA MINING DIVISION

ENDAKO, B. C.

(Latitude 54°15', Longitude 125°)

N.T.S. 93K/3E

Field work undertaken on 28 and 29 June 1972

E. T. Kimura

23 January 1973

Department of	
Mines and Petroleum Resources	
ASSESSMENT REPORT	
NO. 4284	MAP

TABLE OF CONTENTS

	Page
Introduction	1
Summary	1
Mineral Claim Group	1
Topography and Access	1
General Geology	1
Survey Control	2
<u>Soil Geochemical Survey</u>	2
Introduction	2
Sampling	2
Assay Method	3
Results	3
Statement of Expenses	3
Conclusion	4

Appendices

I	Certification	6
II	Statement of Qualification	7
#1	III Mineral Claim Map 1" = 1/2 mile	
#2	IV Soil Geochemical Survey: Molybdenum 1" = 1/4 mile	
#3	V Soil Geochemical Survey: Lead 1" = 1/4 mile	
#4	VI Soil Geochemical Survey: Zinc 1" = 1/4 mile	
#5	VII Soil Geochemical Survey: Copper 1" = 1/4 mile	
#6	VIII Soil Geochemical Survey: Silver 1" = 1/4 mile	
	IX Declaration for Statement of Expenses	
#7	Location Map 1" = 1/4 mi.	

INTRODUCTION

Soil geochemical survey was conducted over Han 135 Group of Mineral Claims on 28 and 29 June 1972. The work was undertaken as part of commitments for assessment work on mineral claims which are owned by Canex Placer Limited, Endako Mines Division. The property is located at Hanson Lake approximately eleven miles due north of Endako Village.

SUMMARY

A total of 134 soil samples were collected at 200-foot-spacings along one north-south and three east-west lines. Samples were assayed for Mo, Cu, Pb, Zn and Ag content. Coincident higher values in Mo, Cu, Pb and Zn form a relatively small anomaly at northeast corner of mineral claim block.

MINERAL CLAIM GROUP

The Han 135 Group of Mineral Claims is located at Hanson Lake about eleven miles due north of Endako Village in the Omineca Mining Division. The property is geographically located in the southeast quadrant of quadrilateral Latitude 54° and Longitude 125° .

The twenty mineral claims were staked on June 27 and 28, 1972, and were recorded as Han 135 - 154 inclusive Mineral Claims, record numbers 112938 - 112956 inclusive, on July 7, 1972. They are grouped as Han 135 Group. An appended map (Appendix III) shows spatial location of mineral claims on $1'' = \frac{1}{2}$ mile scale.

TOPOGRAPHY AND ACCESS

Hanson Lake is situated in the elongated easterly-trending Shovel Creek valley. Glaciation has had pronounced effect on development of valley which characteristically has steep-sided valley walls and relatively broad flat bottom. Relief is about 1,000 to 1,500 feet. Mineral claim block is located on north-facing slope of Hanson Lake. Most southerly line of claims are situated close to and along the divide between Hanson Lake and Justine Lake.

An eleven-mile access road was constructed to Hanson Lake from Duncan Creek partially during fall 1971 and completed in July 1972. Until road completion, Hanson Lake was accessible only by float plane or helicopter. The Han 135 Group of Mineral Claims, being situated on south shore of Hanson Lake, is still only accessible by air support or by boat from road terminus.

GENERAL GEOLOGY

No rock exposures were observed on claim area. It is postulated, mainly from surrounding outcrops and float material, that pink quartz monzonite of Topley Intrusions underlies much of the area. Rock is generally coarse equigranular to subporphyritic and is probably cor-



PROVINCIAL

FOREST

HAN 135 CLAIM GROUP

ENDAKO MINES

FRASER LAKE

4284 M-7

SALE



3 MILES

relative with Glenannan Quartz Monzonite unit (Lode Metals in British Columbia, 1965, pp. 114 - 135). Float material in overlying overburden suggests that younger rhyolitic and basaltic dykes which have been observed in adjacent regions may also be intrusive into quartz monzonite on claim block area. No mineralization has been discovered on claims.

SURVEY CONTROL

Aerial photographs on 1" = ½ mile scale were utilized for ground location control. Sample lines were established by chain and compass. A north-south line was established as a baseline along west boundary of claim group, and three widely-spaced sample lines were produced eastward from this line.

SOIL GEOCHEMICAL SURVEY

Introduction

Soil geochemical samples were collected at 200-foot intervals from one southerly-trending line and three widely-spaced easterly-trending lines.

Soil development was generally poor over entire claim group. Much of area is overlain by glacial till with varying depths of dark organic-rich humus layer up to ten inches mantling B-horizon. Soil development was particularly poor where most southerly geochem line extended across flat topographic divide; soil samples were taken from immature lithosols.

Vegetation over north-facing slope is variable with balsam, jack pine and minor spruce prevailing over northerly half to two-thirds of claim area. Water table across this heavily-forested slope is locally very shallow, and these conditions are characteristically reflected with dense growths of devils club, willow and alder. Thick second-growth jack pine stand predominates over a more recently-burned area across southerly half of claim group.

Sampling

Majority of soil samples were obtainable from small four-to six-inch deep holes; occasionally deeper depths were required where humus layer was thick. Samples were collected wherever possible from B-horizon. Where soil development was poor, samples were frequently collected from composites of A-, B- or C-horizons. Occasionally organic-rich material was sampled when humus depth was excessive. Teflon spoons were utilized to scoop about 150 grams of material into heavy kraft paper envelopes. Samples were generally dried under room temperature conditions prior to shipment to laboratory.

Assay Method

All soil samples were assayed for Mo, Cu, Pb, Zn and Ag at Placer Development Geochemistry Laboratory, Vancouver, B. C.

The processing and analytical method of soil geochemical samples at Placer Development Geochemistry Laboratory are as follows. Samples are dried in a hot air-dryer, then sifted in -80 mesh nylon sieves. Portions of -80 mesh fractions are weighed with precision torsion balance. Samples are digested in a mixture of hot perchloric and nitric acid, and then prepared for analysis by atomic absorption spectrophotometry. A Perkin-Elmer 403 instrument is used for analysis of molybdenum, copper, lead and zinc. Other portion of sample is digested in boiling nitric acid, then water and 20% T.O.T.P. dissolved in heptane are added. The solution is shaken and centrifuged prior to analyzing for silver by atomic absorption.

Results

Soil geochemical survey has indicated a coincident anomaly in Mo, Cu, Pb and Zn at the northeast corner of claim block. The anomaly is confined to relatively small area although Pb values appear to be more dispersed and wide-spread than others. Additionally, the anomaly is rather weak with no significantly higher single-metal expression. Silver content is low with exception of a few isolated assays which are higher than background.

Appended soil geochemical maps (Appendices IV to VIII) show sample locations, metal contents and interpretation of results. It should be noted that molybdenum values for samples assaying less than five parts per million are not plotted by sample site on Appendix IV.

STATEMENT OF EXPENSES

The following expenditures were incurred by Canex Placer Limited, Endako Mines Division for conducting soil geochemical survey over Han 135 Group of Mineral Claims.

Personnel Costs

<u>Personnel</u>	<u>Period Employed</u>	<u>Time and Rate</u>	<u>Cost</u>
A. J. Peters	28 & 29 June 1972	20 hrs @ \$4.50	\$90.00
D. W. Sargent	28 & 29 June 1972	20 hrs @ \$3.53	70.60
E. Naesgaard	28 & 29 June 1972	20 hrs @ \$3.53	<u>70.60</u>
Office overhead on wages @ 15%			34.68

Transportation Costs

Transprovincial Airlines Ltd:	Flights 20048 & 22650		250.00
-------------------------------	-----------------------	--	--------

Geochemical Assaying Costs

Determinations for Mo, Cu, Pb, Zn and Ag			
134 samples @ \$4.50			603.00

Map Compilations

A. J. Peters 18 hrs. @ \$4.50 \$ 81.00

Camp Operations Costs

A. J. Peters	2 days @ \$8.00/man day	\$16.00	
D. W. Sargent	2 days @ \$8.00/man day	16.00	
E. Naesgaard	2 days @ \$8.00/man day	<u>16.00</u>	<u>48.00</u>

Total Soil Geochemical Survey Expenditures \$1,247.88

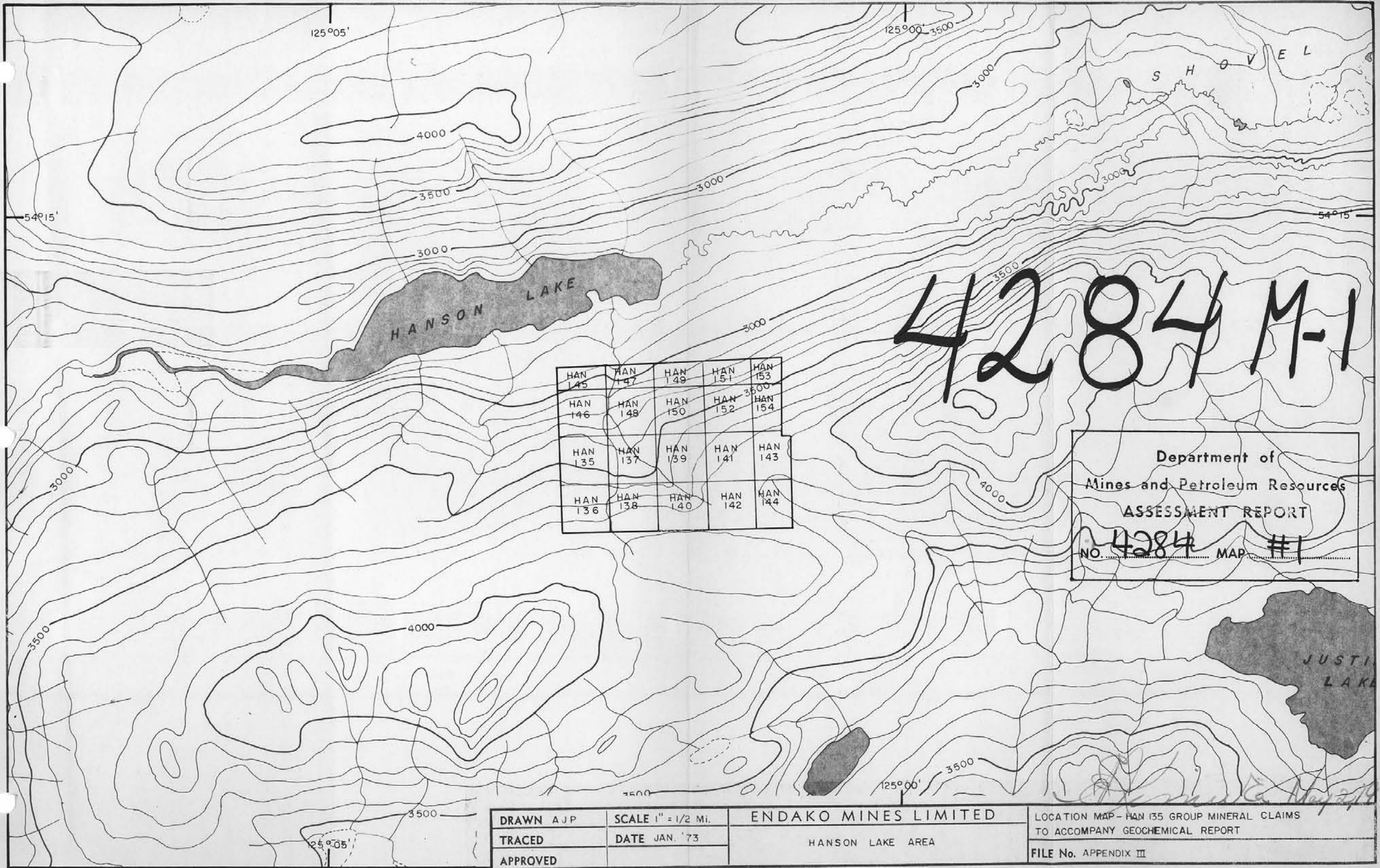
CONCLUSION

Soil geochemical survey indicated a coincident Mo-Cu-Pb-Zn anomaly near northeast corner of Han 135 Group of Mineral Claims. No mineralization has been uncovered in area which is totally devoid of outcrops.

Submitted by:

E. T. Kimura
Senior Geologist
Canex Placer Limited
Endako Mines Division

ETK/at
App:



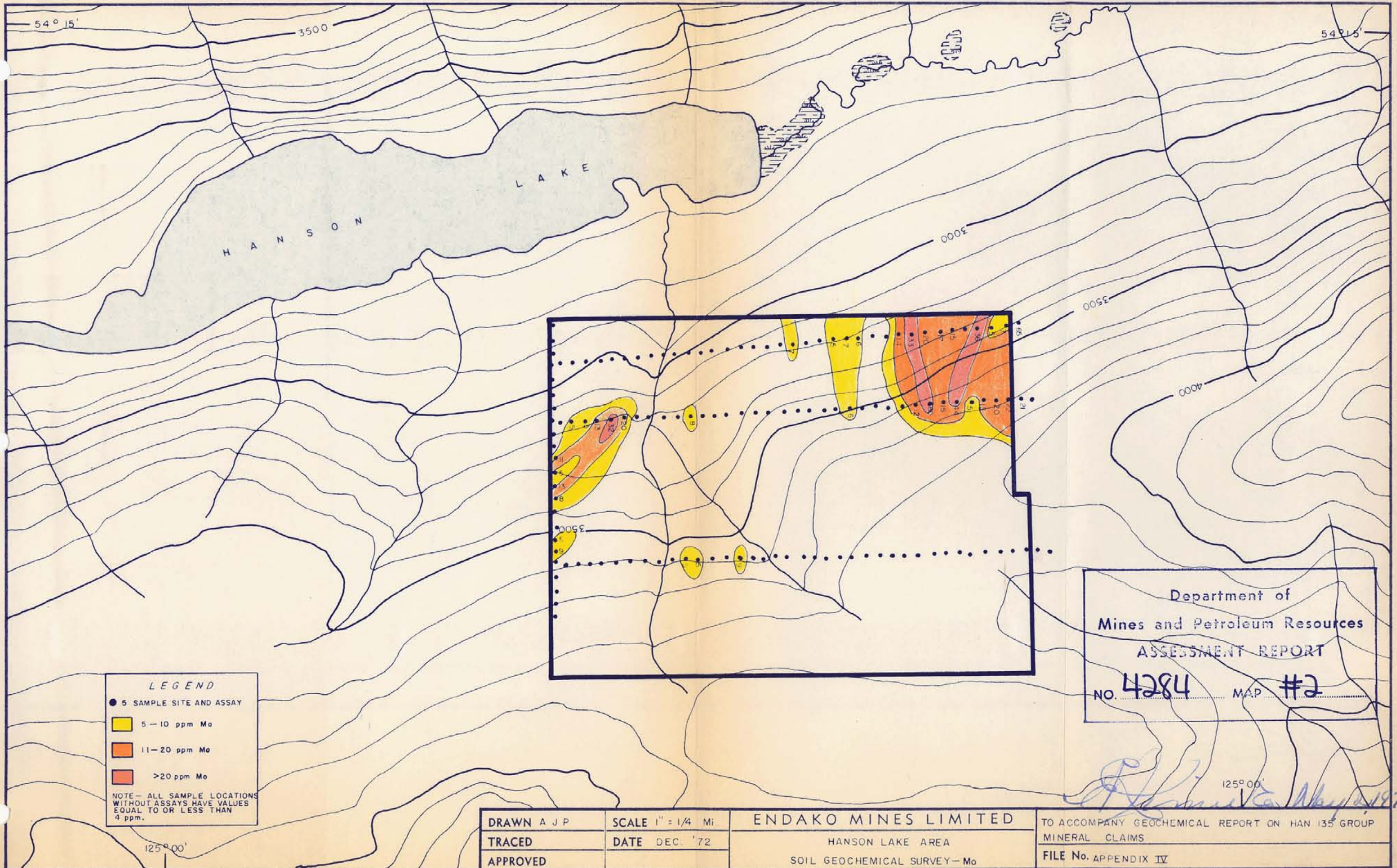
4284 M-1

HAN 145	HAN 147	HAN 149	HAN 151	HAN 153
HAN 146	HAN 148	HAN 150	HAN 152	HAN 154
HAN 135	HAN 137	HAN 139	HAN 141	HAN 143
HAN 136	HAN 138	HAN 140	HAN 142	HAN 144

Department of
Mines and Petroleum Resources
ASSESSMENT REPORT
NO. 4284 MAP #1

DRAWN AJP	SCALE 1" = 1/2 Mi.	ENDAKO MINES LIMITED	LOCATION MAP - HAN 135 GROUP MINERAL CLAIMS TO ACCOMPANY GEOCHEMICAL REPORT	
TRACED	DATE JAN. '73			HANSON LAKE AREA
APPROVED				

[Handwritten signature] May 27, 1973



LEGEND

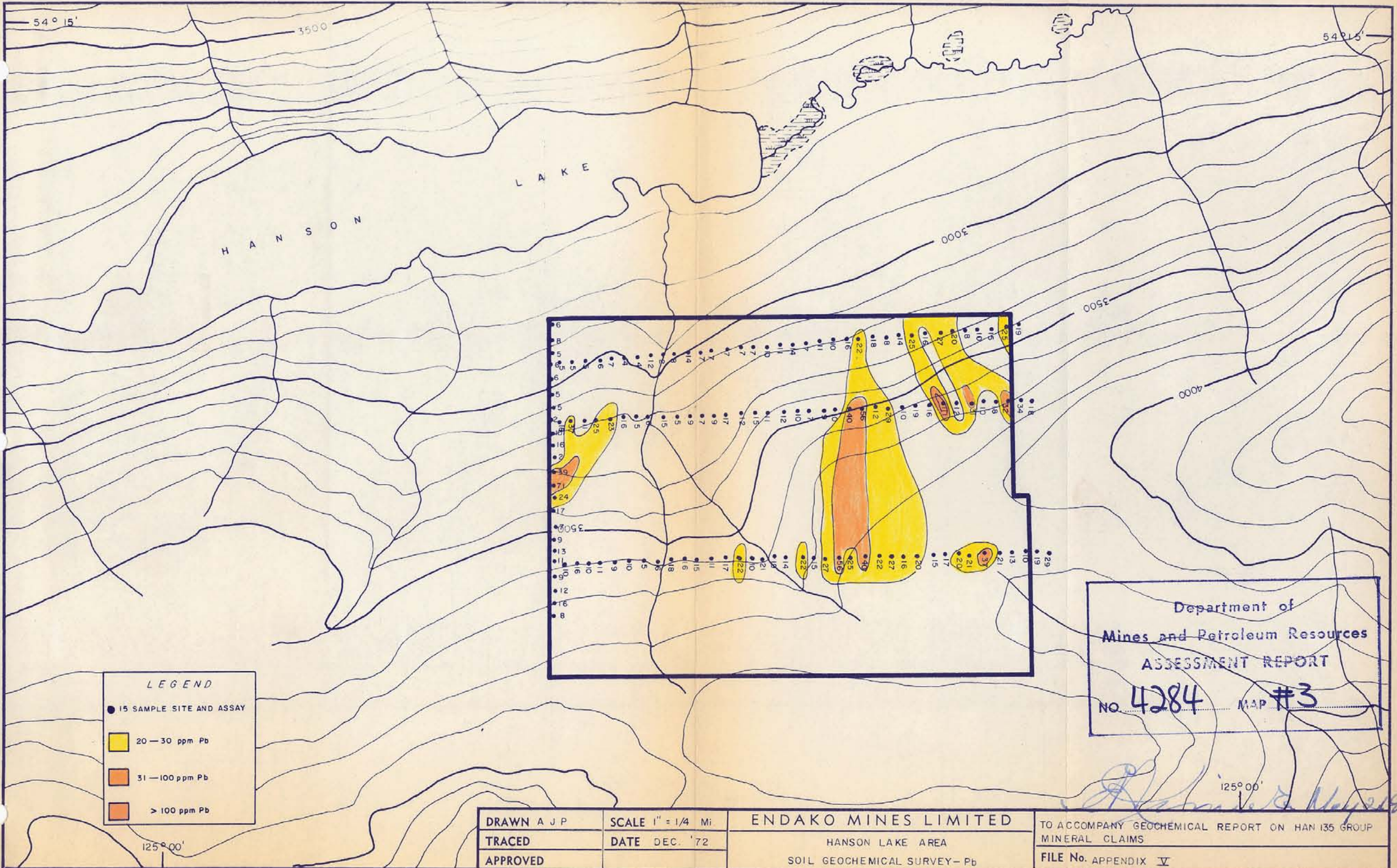
- 5 SAMPLE SITE AND ASSAY
- 5-10 ppm Mo
- 11-20 ppm Mo
- >20 ppm Mo

NOTE - ALL SAMPLE LOCATIONS WITHOUT ASSAYS HAVE VALUES EQUAL TO OR LESS THAN 4 ppm.

Department of
Mines and Petroleum Resources
ASSESSMENT REPORT
NO. 4284 MAP #2

DRAWN A J P	SCALE 1" = 1/4 Mi	ENDAKO MINES LIMITED	TO ACCOMPANY GEOCHEMICAL REPORT ON HAN 135 GROUP MINERAL CLAIMS FILE No. APPENDIX IV
TRACED	DATE DEC. '72	HANSON LAKE AREA	
APPROVED		SOIL GEOCHEMICAL SURVEY - Mo	

[Handwritten signature] 125° 00'



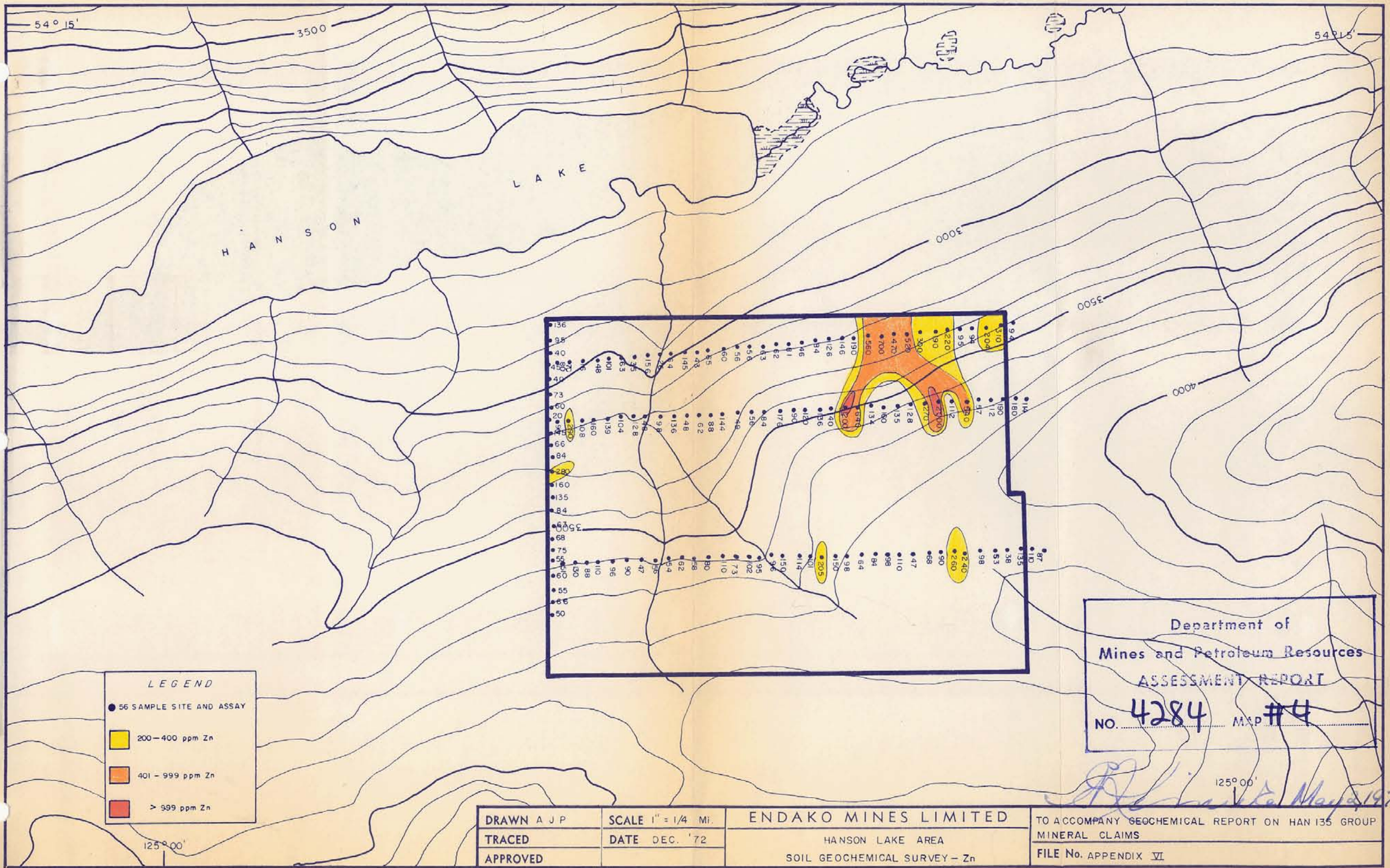
LEGEND

- 15 SAMPLE SITE AND ASSAY
- 20 — 30 ppm Pb
- 31 — 100 ppm Pb
- > 100 ppm Pb

Department of
 Mines and Petroleum Resources
 ASSESSMENT REPORT
 NO. 4284 MAP #3

DRAWN A J P	SCALE 1" = 1/4 Mi	ENDAKO MINES LIMITED	TO ACCOMPANY GEOCHEMICAL REPORT ON HAN 135 GROUP MINERAL CLAIMS
TRACED	DATE DEC. '72	HANSON LAKE AREA	
APPROVED		SOIL GEOCHEMICAL SURVEY — Pb	
			FILE No. APPENDIX V

[Handwritten Signature]
 125° 00'



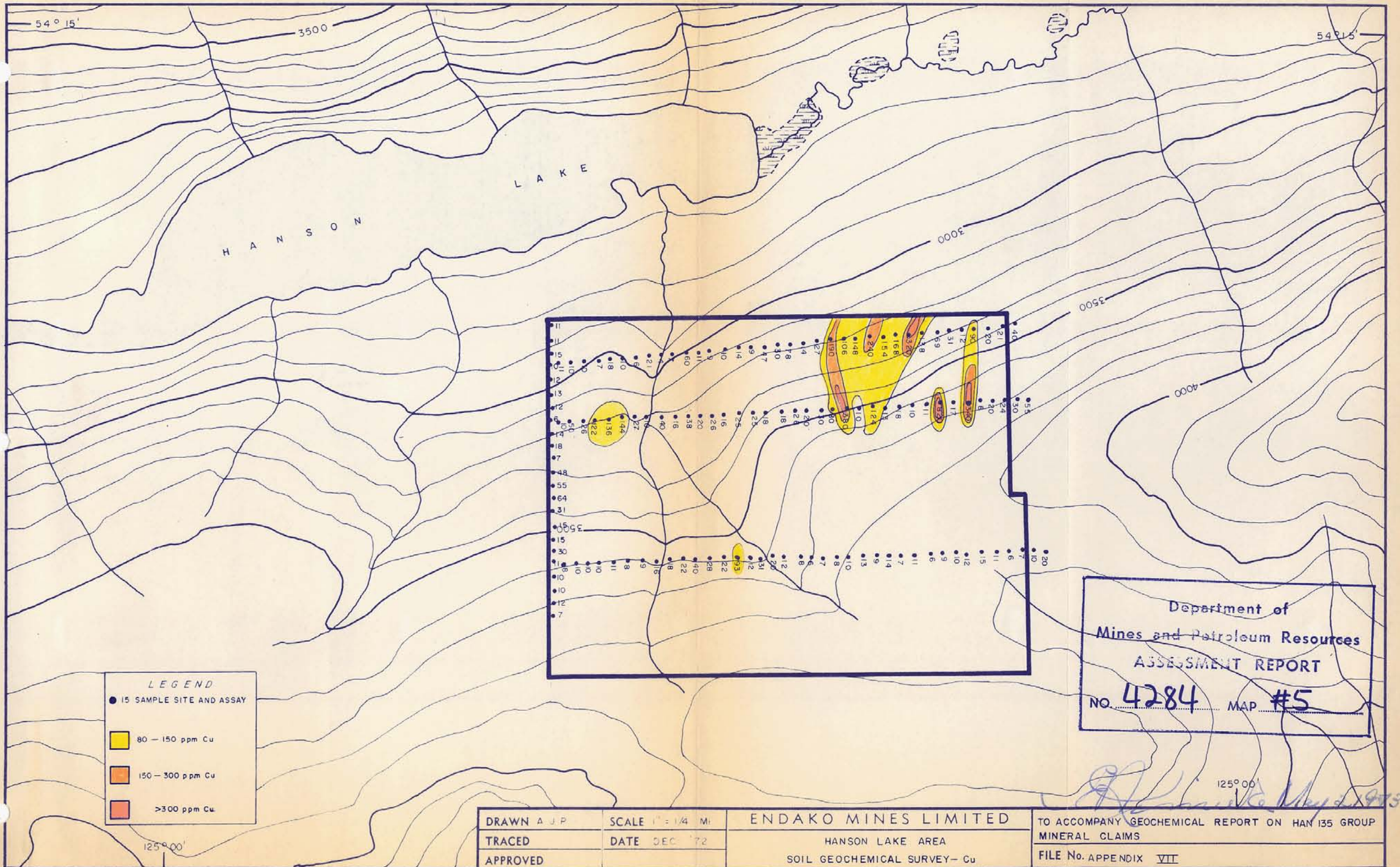
LEGEND

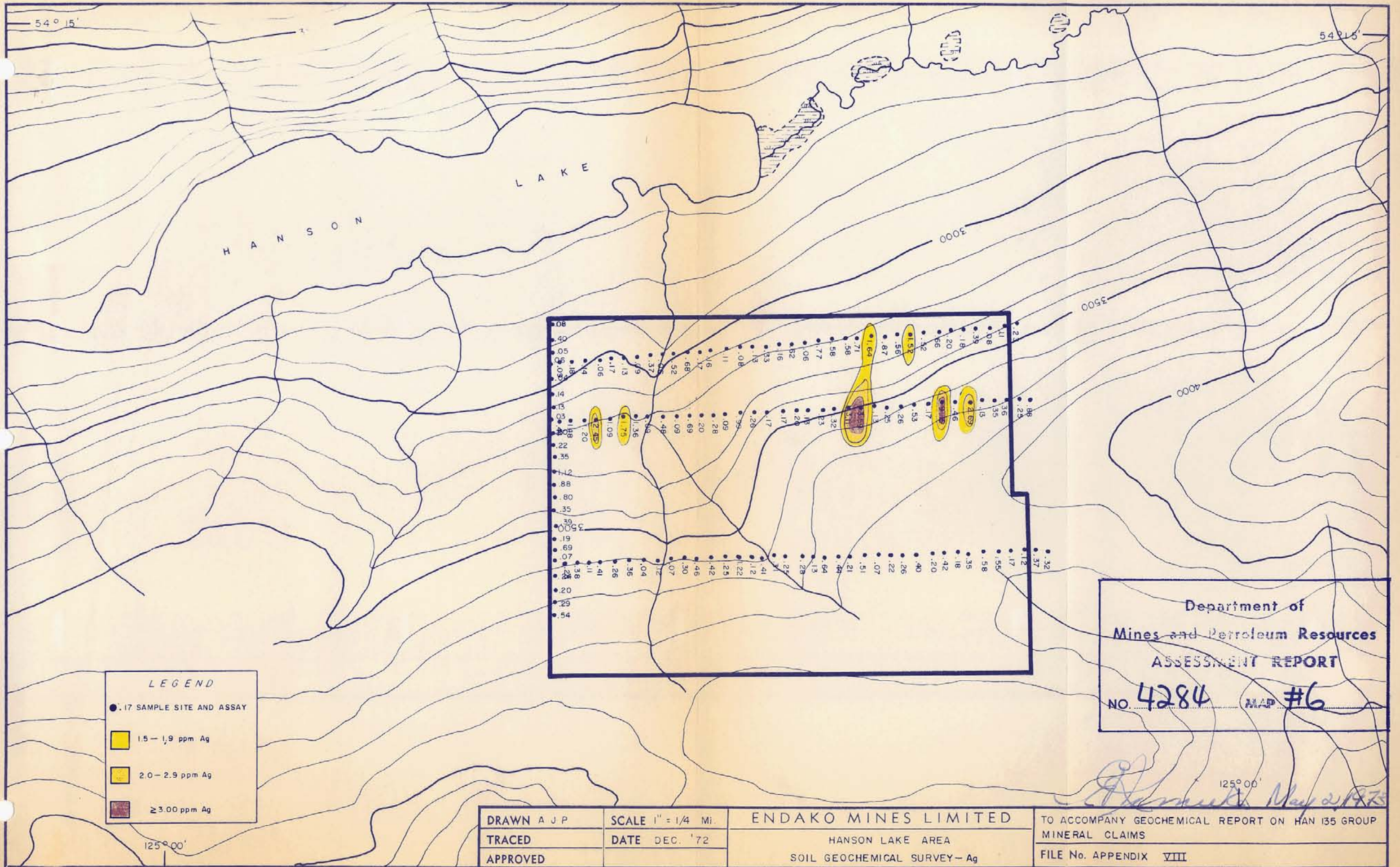
- 56 SAMPLE SITE AND ASSAY
- 200 - 400 ppm Zn
- 401 - 999 ppm Zn
- > 999 ppm Zn

Department of
Mines and Petroleum Resources
ASSESSMENT REPORT
NO. **4284** MAP # **4**

[Handwritten Signature]
125° 00'

DRAWN AJP	SCALE 1" = 1/4 Mi.	ENDAKO MINES LIMITED	TO ACCOMPANY GEOCHEMICAL REPORT ON HAN 135 GROUP MINERAL CLAIMS
TRACED	DATE DEC. '72		
APPROVED		SOIL GEOCHEMICAL SURVEY - Zn	FILE No. APPENDIX VI





LEGEND

- .17 SAMPLE SITE AND ASSAY
- 1.5 - 1.9 ppm Ag
- 2.0 - 2.9 ppm Ag
- ≥ 3.00 ppm Ag

Department of
Mines and Petroleum Resources
ASSESSMENT REPORT
NO. **4284** MAP #6

D. [unclear] May 2, 1975

DRAWN A J P	SCALE 1" = 1/4 Mi.	ENDAKO MINES LIMITED	TO ACCOMPANY GEOCHEMICAL REPORT ON HAN 135 GROUP MINERAL CLAIMS
TRACED	DATE DEC. '72	HANSON LAKE AREA	FILE No. APPENDIX VIII
APPROVED		SOIL GEOCHEMICAL SURVEY - Ag	

APPENDICES

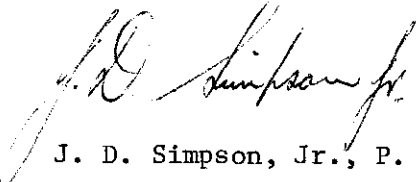
- I Certification
- II Statement of Qualification
- III Mineral Claim Map 1" = $\frac{1}{2}$ mile
- IV Soil Geochemical Survey: Molybdenum 1" = $\frac{1}{4}$ mile
- V Soil Geochemical Survey: Lead 1" = $\frac{1}{4}$ mile
- VI Soil Geochemical Survey: Zinc 1" = $\frac{1}{4}$ mile
- VII Soil Geochemical Survey: Copper 1" = $\frac{1}{4}$ mile
- VIII Soil Geochemical Survey: Silver 1" = $\frac{1}{4}$ mile
- IX Declaration for Statement of Expenses

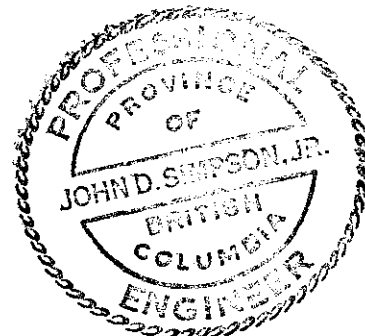
APPENDIX I

CERTIFICATION

I, J. D. Simpson Jr. of Canex Placer Limited, Endako Mines Division, Endako, B. C., do hereby certify that:

1. I am a registered Professional Engineer in the Province of British Columbia.
2. I have carefully reviewed the data and examined the report of E. T. Kimura on exploration work which was undertaken on 28th and 29th June, 1972 on Han 135 Group of Mineral Claims. The mineral claims are owned by Canex Placer Limited, Endako Mines Division, and are located in the Omineca Mining Division near Endako, B. C. (Latitude $54^{\circ}15'$, Longitude 125°).
3. To the best of my knowledge the interpretation of data, conclusions and expenditures which are claimed for the performance of work are valid.


J. D. Simpson, Jr., P. Eng.

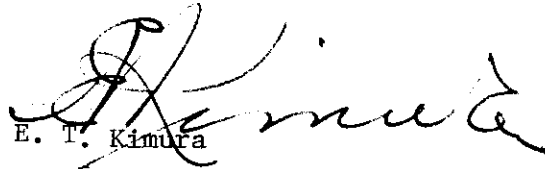


APPENDIX II

STATEMENT OF QUALIFICATION

I, E. T. Kimura, of Canex Placer Limited, Endako Mines Division, Endako, B. C., do hereby certify that:

1. I am a geologist.
2. I am a graduate of University of British Columbia with a B.A. degree in Geology and Physics in 1955.
3. From 1954 until the present I have been engaged in mining geology, both in underground and open pit operations, and in exploration geology in British Columbia, Saskatchewan and Yukon Territory.
4. I personally planned and supervised the field work, and have reviewed and assessed the data resulting from this work.


E. T. Kimura



APPENDIX IX

DOMINION OF CANADA:
 PROVINCE OF BRITISH COLUMBIA.
 To Wit:

In the Matter of

expenditures for soil geochemical survey on Han 135 Group of Mineral Claims on 28th and 29th June 1972.

I, E. T. Kimura

of CANEX PLACER LIMITED, ENDAKO MINES DIVISION, ENDAKO, B. C.

in the Province of British Columbia, do solemnly declare that the following expenditures have been incurred by Canex Placer Limited, Endako Mines Division in carrying out soil geochemical survey for assessment work purposes on Han 135 Group of Mineral Claims.

Personnel Costs

<u>Personnel</u>	<u>Period Employed</u>	<u>Time and Rate</u>	<u>Cost</u>
A. J. Peters	28 & 29 June 1972	20 hrs @ \$4.50	\$90.00
D. W. Sargent	28 & 29 June 1972	20 hrs @ \$3.53	70.60
E. Naesgaard	28 & 29 June 1972	20 hrs @ \$3.53	<u>70.60</u>
			\$231.20
Office overhead @ 15% on wages			34.68

Transportation Costs

Transprovincial Airlines Ltd. Flights 20048 and 22650 250.00

Geochemical Assaying Costs

Determinations for Mo, Pb, Zn, Cu and Ag
 134 samples @ \$4.50 603.00

Map Compilations: A. J. Peters 18 hrs. @ \$4.50 81.00

Camp Operations Costs

A. J. Peters	2 days @ \$8.00/man day	\$16.00
D. W. Sargent	2 days @ \$8.00/man day	16.00
E. Naesgaard	2 days @ \$8.00/man day	<u>16.00</u>
		<u>48.00</u>

Total Soil Geochemical Survey Expenditures \$1,247.88

And I make this solemn declaration conscientiously believing it to be true, and knowing that it is of the same force and effect as if made under oath and by virtue of the "Canada Evidence Act."

Declared before me at the VILLAGE
 of BURNS LAKE, in the
 Province of British Columbia, this 2nd
 day of MAY, 1973 A.D.

[Handwritten signature of E. T. Kimura]

[Handwritten signature of Notary Public]

— A Commissioner for taking Affidavits within British Columbia or
 A Notary Public in and for the Province of British Columbia.

In the Matter of

Expenditures for Soil Geochemical

Survey on Han 135 Group of Mineral

Claims on 28th and 29th June, 1972.

Statutory Declaration

(CANADA EVIDENCE ACT)
