

4297

GEOLOGICAL REPORT

ON

RUSH MINERAL CLAIMS
GAUVREAU CREEK AREA
LIARD MINING DIVISION, B.C.

Latitude: 56° 23' N.

Longitude: 123° 37' W.

Map Sheet: 94B/5E

BY

JAMES S. DODGE, P. ENG.

SEPTEMBER 11 - 17, 1972

Department of	
Mines and Petroleum Resources	
ASSETS	
NO.	4297

TABLE OF CONTENTS

	<u>Page No.</u>
LIST OF CLAIMS.....	1
INTRODUCTION.....	2
LOCATION AND ACCESS.....	2
SURVEY TECHNIQUES.....	2 & 3
GEOLOGY.....	3, 4 & 5
APPENDIX I - SUMMARY OF COSTS.....	6
APPENDIX II - AFFIDAVIT.....	7
APPENDIX III - STATEMENT OF QUALIFICATIONS.	8

MAP

#1 GEOLOGY ON GAUVREAU CREEK - SCALE 1 : 50,000
#2 Claim map

LIST OF CLAIMS

<u>Claim Numbers</u>	<u>Grant Numbers</u>	<u>Mining Division</u>	<u>Date Recorded</u>
RUSH 1 - 4	58158 - 58161	Liard	April 7, 1972
RUSH 25 - 38	58162 - 58175	Liard	April 7, 1972
RUSH 5 - 24	108571 - 108590	Omineca	April 7, 1972
RUSH 39 - 65	108591 - 108617	Omineca	April 7, 1972

INTRODUCTION

During September, 1972, Spartan Explorations Ltd. conducted a reconnaissance program of prospecting, geological mapping, and geochemical sampling on the RUSH group of 65 Claims. Particular attention was paid to the middle Devonian carbonate sediments as potential hosts for Mississippi Valley Type lead-zinc mineralization.

LOCATION AND ACCESS

The RUSH group is centered approximately at latitude 56° 23' N. and longitude 123° 37', 2½ miles north of Gauvreau Peak at the headwaters of the Nabesche River some 115 miles due west of Fort St. John, B.C.

The most feasible access to the property is by helicopter from Fort St. John although the terrain would permit the use of pack horses from Christina some 25 - 30 miles to the northeast.

SURVEY TECHNIQUES

Spartan Explorations Ltd. established a 2-man camp by Okanagan Helicopters on the lower of two small lakes immediately east of the central portion of the claim group. All geological mapping and prospecting was done on foot; although a brief helicopter reconnaissance was conducted to obtain an overall geologic sense of the major structural features.

SURVEY TECHNIQUES...Continued

The two-man party comprised a geologist and a prospector. Geological mapping, as it was to be reconnaissance in nature at the outset, was completed on a scale of 1 : 50,000. The Gauvreau Creek map sheet, 94B/5E, was used as a base.

GEOLOGY

Stratigraphy

The Rush group of claims cover exposures of sediments of Silurian and Devonian age, as indicated on G.S.C. Map 1232A, Halfway River. However, the distribution of Devonian formations was indicated by reconnaissance mapping to be less extensive than depicted on the G.S.C. map. Only the basal Middle Devonian on the crest of topographic ridges survived the extensive alpine erosion in the area.

Silurian sediments, over 1,000 feet thick, comprise a succession of thin to medium bedded, gray to black carbonaceous limestone, dolomitic limestone, and argillaceous limestone with distinct, thin, crinoid 'trash' marker beds in the upper units exposed in the western half of the Rush claims. Several hundred feet of platy, fissile, buff to gray weathering argillaceous limestone crop out on the hill on Claims 20 - 24.

GEOLOGY...ContinuedStratigraphy

Devonian carbonate sediments are exposed on Claims 29, 31, 32, 34 and 36 as fine to medium crystalline, gray to black weathering dolomite and limy dolomite in a medium bedded succession exposed for a thickness ranging up to approximately 200 feet. The lower unit, overlying a thin, buff sandstone bed, contains calcite fracture fillings and abundant silicified Stringecephalus (Claim 36) and a few Amphipora corals (Claim 32). This rests apparently unconformably on gray, Silurian limestones, best exposed immediately east of a pond on Claims 32 and 34.

Structure

The Rush claims lie along the western flank of the Bernard anticline, in part, astride the Nabesche strike-thrust fault which has moved Silurian sediments relatively eastward overriding Middle Devonian and Silurian sediments. The strike of the sediments in a broad sense, parallel the axis of the Bernard anticline; generally, N 10° - 15° W.

However, locally in the vicinity of the Nabesche fault drag folding of the overthrust Silurian sediments is prominently displayed. The uniform 20° - 30° westerly dip of the Silurian formations abruptly becomes flat, steeply easterly, and then steeply overturned to the west along the base of the overthrust sheet (see Section A-A' on geologic sketch). This feature is best exhibited on Claims 33 and 34, and along the east ridge of Gauvreau Peak, off the claim area to the south.

GEOLOGY...Continued

Mineralization

No evidence of zinc-lead mineralization was discovered on the claims either from detailed prospecting of the Middle Devonian dolomites or from the use of Total Heavy Metal geochemical field tests on samples of silts and soils during the course of reconnaissance, geological mapping and prospecting. Minor limonitic zones occur along the Nabesche fault, but these exhibit no anomalous geochemical values.

APPENDIX I

SUMMARY OF COSTS

Wages & Fees (September 11 - 17, 1973)

James Dodge, P. Eng.	5 days at \$100/day	\$ 500.00
Arnold Racicot, Prospector	5 days at \$ 50/day	\$ 250.00

Subsistence

2 Men, 7 days groceries, camp fuel		\$ 104.00
------------------------------------	--	-----------

Transportation

Okanagan Helicopters: Jet Ranger		
two return trips totalling 4.8+ hours		
at \$250/hr.		<u>\$1,203.98</u>

GRAND TOTAL -		<u><u>\$2,057.98</u></u>
---------------	--	--------------------------

DOMINION OF CANADA:
PROVINCE OF BRITISH COLUMBIA.
To Wit:

In the Matter of

costs incurred in carrying out geological mapping on the RUSH claims,

I, James S. Dodge

of #304, 1035 West Pender Street, Vancouver 1, B.C.

in the Province of British Columbia, do solemnly declare that

to the best of my knowledge and belief the Summary of Costs as presented in Appendix I, Page No. 6 of this report, "Geological Report on the RUSH Mineral Claims", is both true and correct.

And I make this solemn declaration conscientiously believing it to be true, and knowing that it is of the same force and effect as if made under oath and by virtue of the "Canada Evidence Act."

Declared before me at the City
of Vancouver, in the
Province of British Columbia, this 1st
day of May, 1973, A.D.

James S. Dodge

L. Gerrette
A Commissioner for taking Affidavits for British Columbia or
A Notary Public in and for the Province of British Columbia.

SUB-MINING RECORDER

In the Matter of

COSTS INCURRED IN

CARRYING OUT GEOLOGICAL

MAPPING ON THE RUSH

CLAIMS

Statutory Declaration

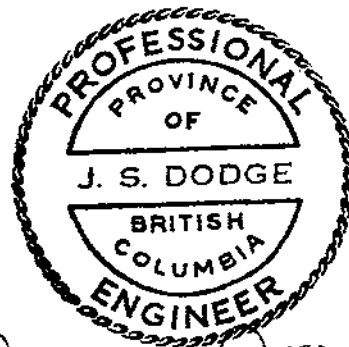
(CANADA EVIDENCE ACT)

APPENDIX III

STATEMENT OF QUALIFICATIONS

1. I am a minerals exploration consultant residing at 392 Royalmore Avenue, Richmond, British Columbia with offices at 1035 West Pender Street, Vancouver, British Columbia and Red Mountain, Aspen, Colorado, U.S.A.
2. I graduated as a mining engineer from Missouri School of Mines, B.S., 1941; received the degree of Master of Science in economic geology from Stanford University, 1951; and attended Albert-Ludwigs University, Freiburg, Germany during 1952.
3. I am a certified member of the Association of Professional Engineers of British Columbia, and am a registered professional engineer in the State of Colorado. I am a member of the Society of Economic Geologists.
4. I am the author of this entire report.
5. I carried out the geological mapping performed on the Rush Group of Claims.

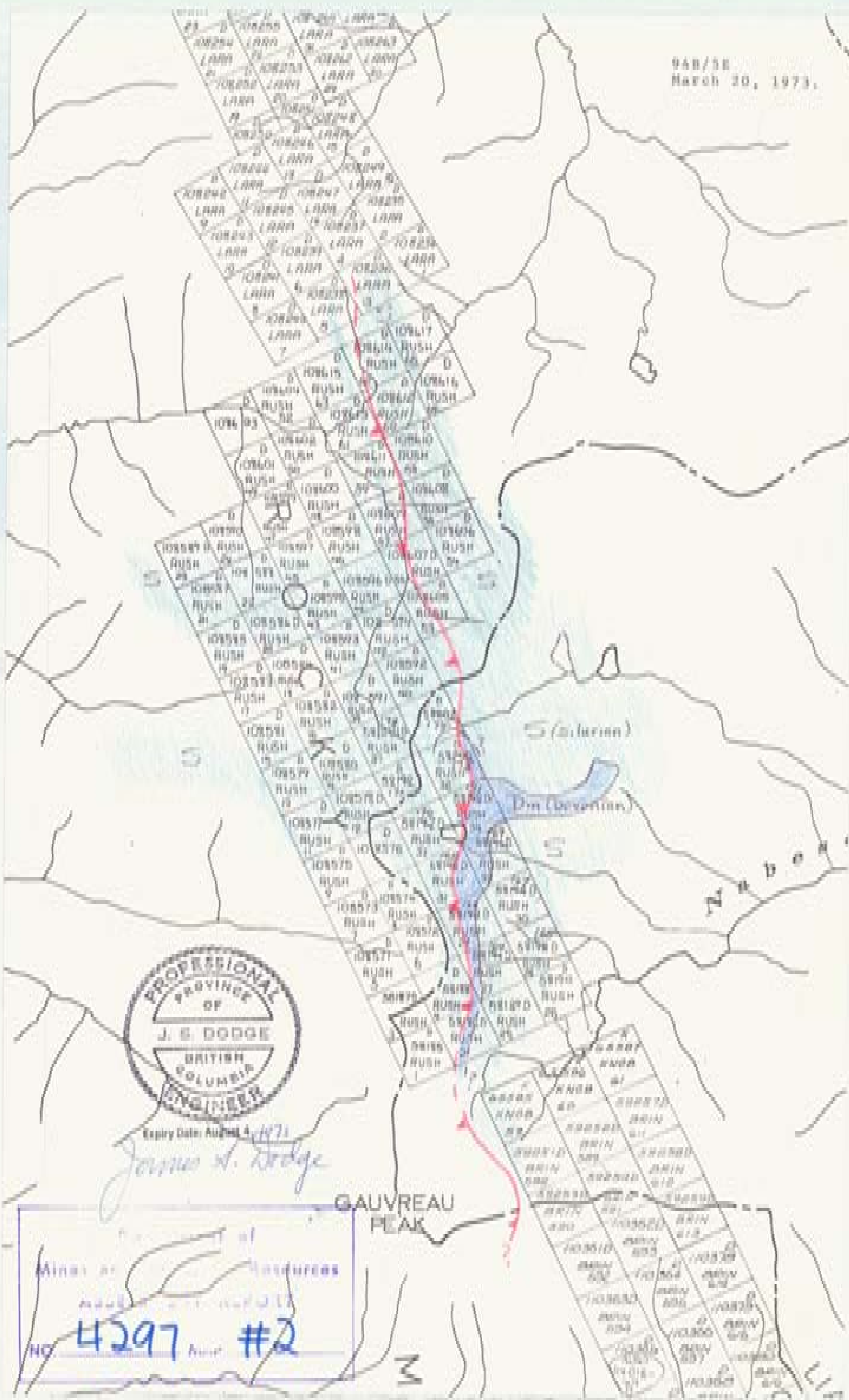
April 30, 1973.



Expiry Date: August 4, 1973

Signed: James S. Dodge
James S. Dodge

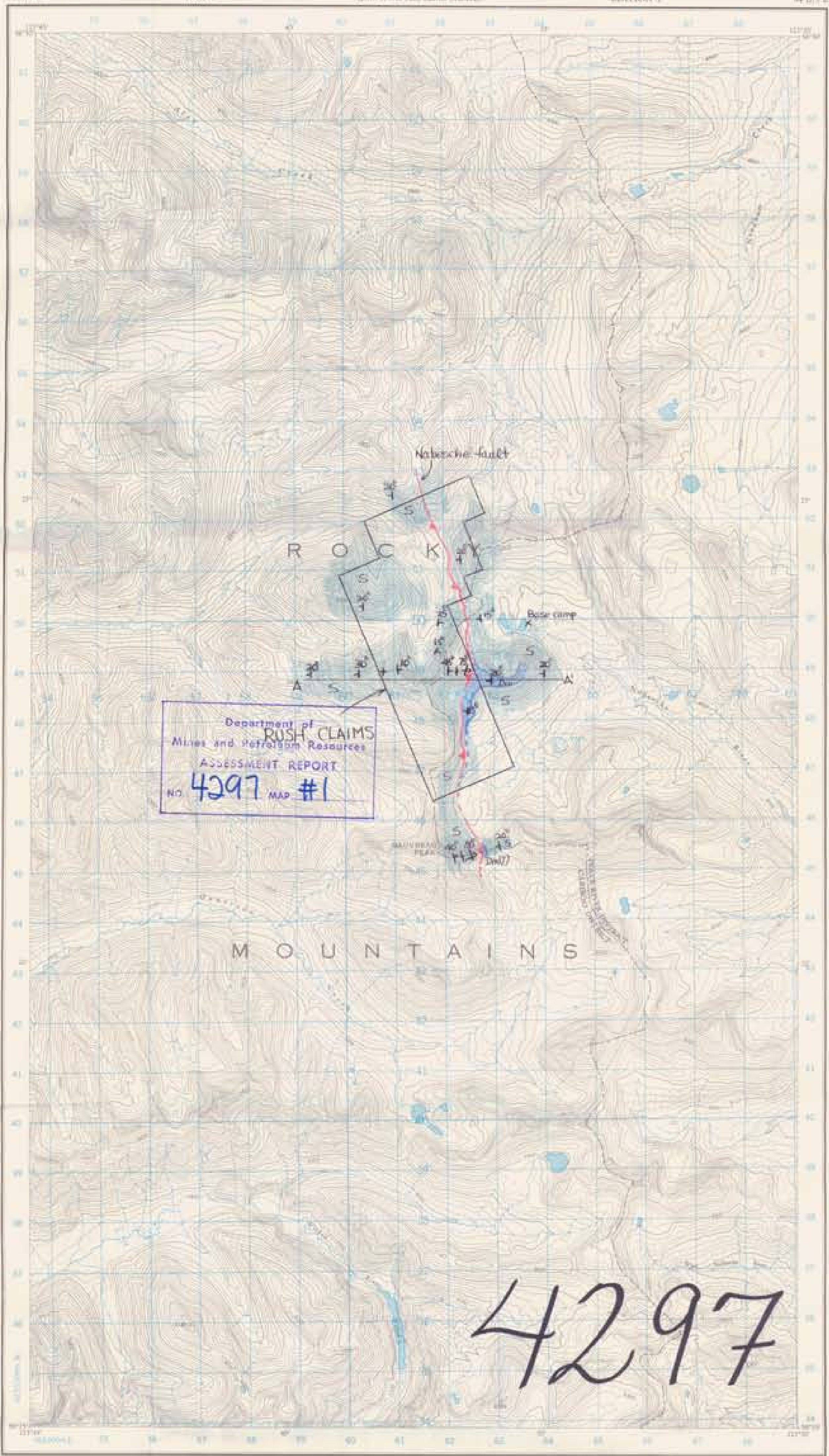
948/58
March 30, 1973.



Expiry Date: August 4, 1971
James S. Dodge

GAUVREAU PEAK

Map of Resources
4297 #2

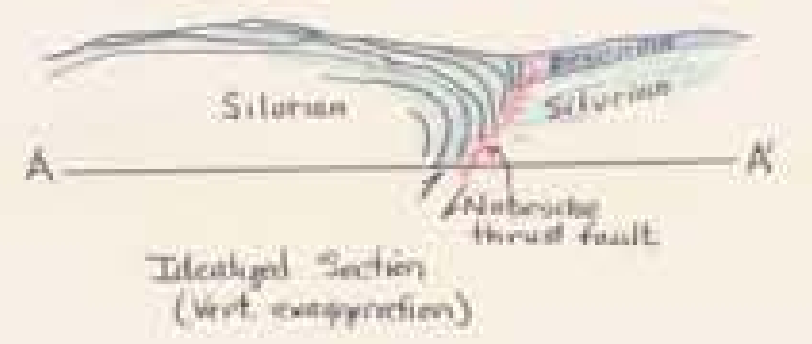


Scale 1:50,000
 1:50,000
 1:50,000

Mapped Outcrop Areas
 [Dm] Middle Devonian
 [S] Silurian

Bedding:
 Horizontal +
 Vertical /
 Inclined +
 Overturned *

Fault Trace: —



Scale 1:50,000



ONE THOUSAND METRE
 UNIFORM THICKNESS SECTION 200
 ZONE 10

4297 M-1

PROVISIONAL MAP OF BRITISH COLUMBIA AND NEARBY AREAS
 DEPARTMENT OF MINES AND PETROLEUM RESOURCES
 (PROVISIONAL MAP NO. 94 B/1 E)

GAUVREAU CREEK
 BRITISH COLUMBIA

PROVISIONAL MAP OF BRITISH COLUMBIA AND NEARBY AREAS
 DEPARTMENT OF MINES AND PETROLEUM RESOURCES
 (PROVISIONAL MAP NO. 94 B/1 E)

Symbol	Description
[Symbol]	Contour lines
[Symbol]	Water bodies
[Symbol]	Settlements
[Symbol]	Transportation routes
[Symbol]	Geological features



Symbol	Description
[Symbol]	Geological features
[Symbol]	Bedding symbols
[Symbol]	Fault traces



James S. Dodge

To accompany geological report
 by James S. Dodge, P.Eng. on
 RUSH group, on Nabesche River
 Lead Mining Division, dated
 April 20, 1973.