

021/9W,ICE
LINE CUTTING REPORT

JR MINERAL CLAIMS

OWNER: STYNRO DEVELOPMENT LTD. NPL

KAMLOOPS MINING DIVISION

WORK DONE: JUNE 28-JULY 9/72

RETURN TO
DEPARTMENT OF MINES AND PETROLEUM RESOURCES
VICTORIA, BRITISH COLUMBIA

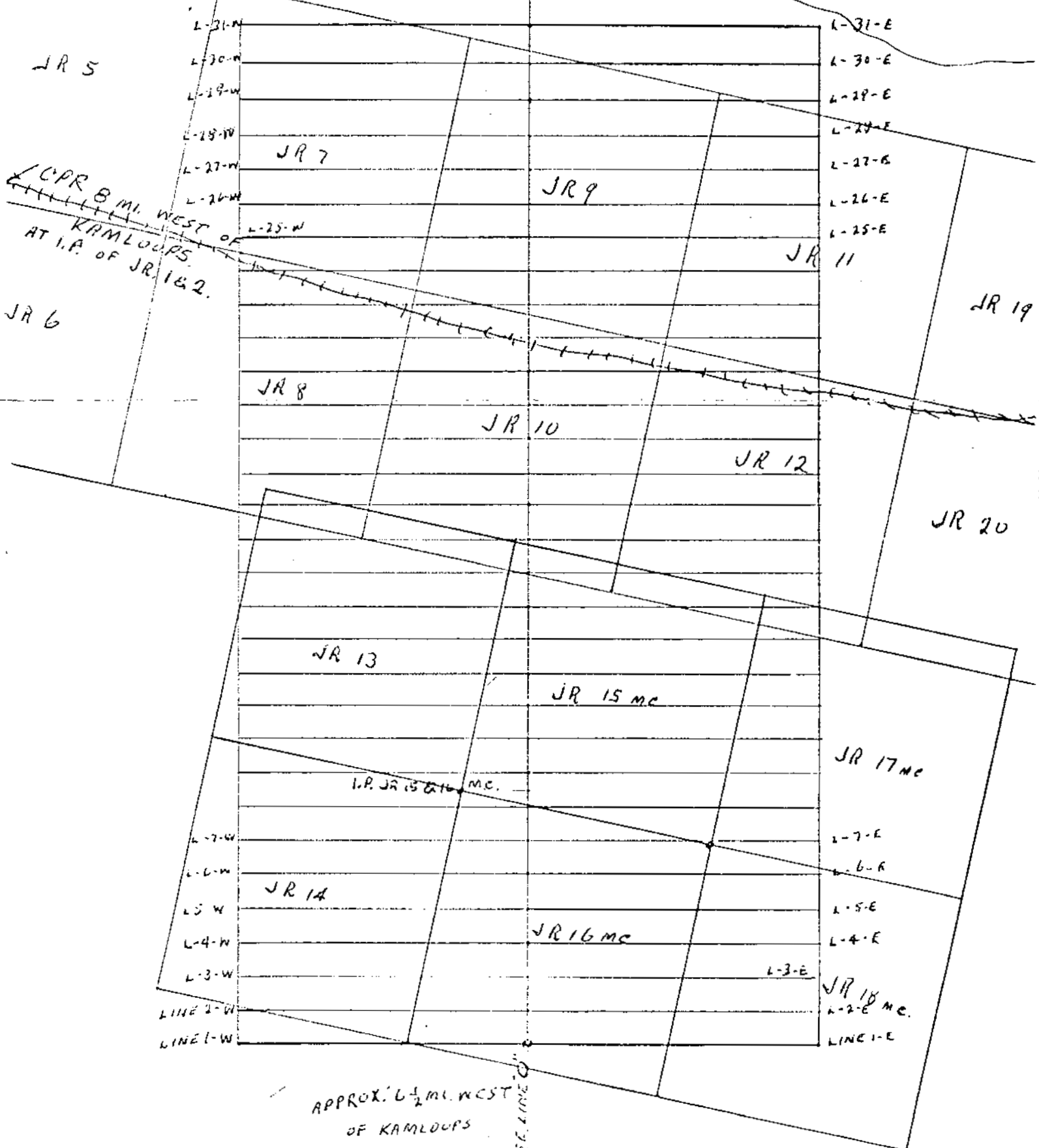
4311

Department of
Mines and Petroleum Resources
ASSESSMENT REPORT

NO. **4311** MAP #1

INDEX MAP OF SURVEY GRID
JR MC NOS. 17020 INCL. 8 MI. WES
OF KAMLOOPS ON SOUTH SIDE OF
KAMLOOPS LAKE, KAMLOOPS M.D.
RECORD NOS 110390 TO 110405 INCL.
PROPERTY OF STYVRO DEV. LTD. M.P.L.
SCALE 1"=750'
GRID 200' X 100' WORK COMMENCED
APPROX. 20 LINE MILES. JUNE 28/72
COMPLETED JULY 9/72

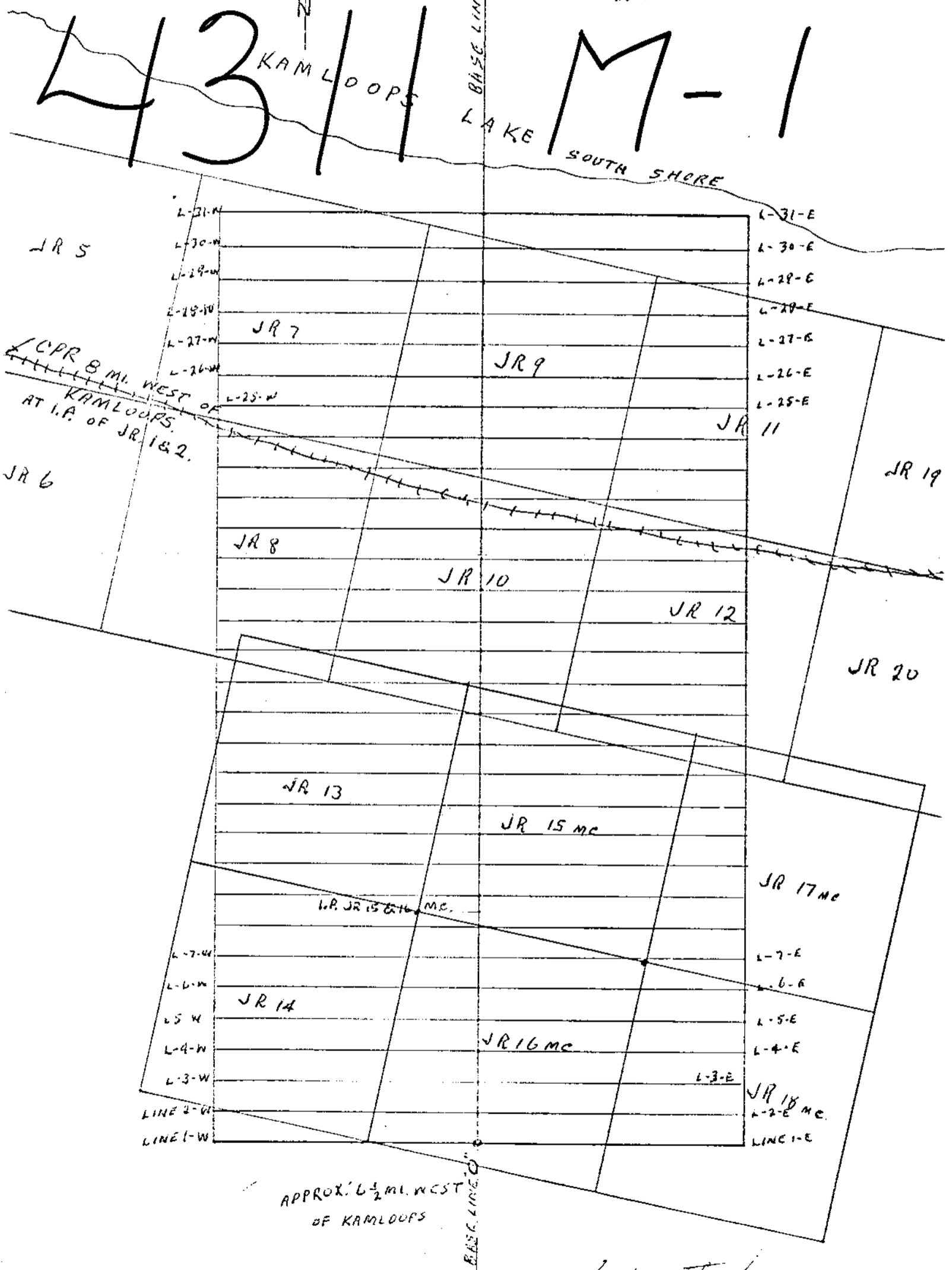
4311 KAMLOOPS LAKE SOUTH SHORE **M-1**



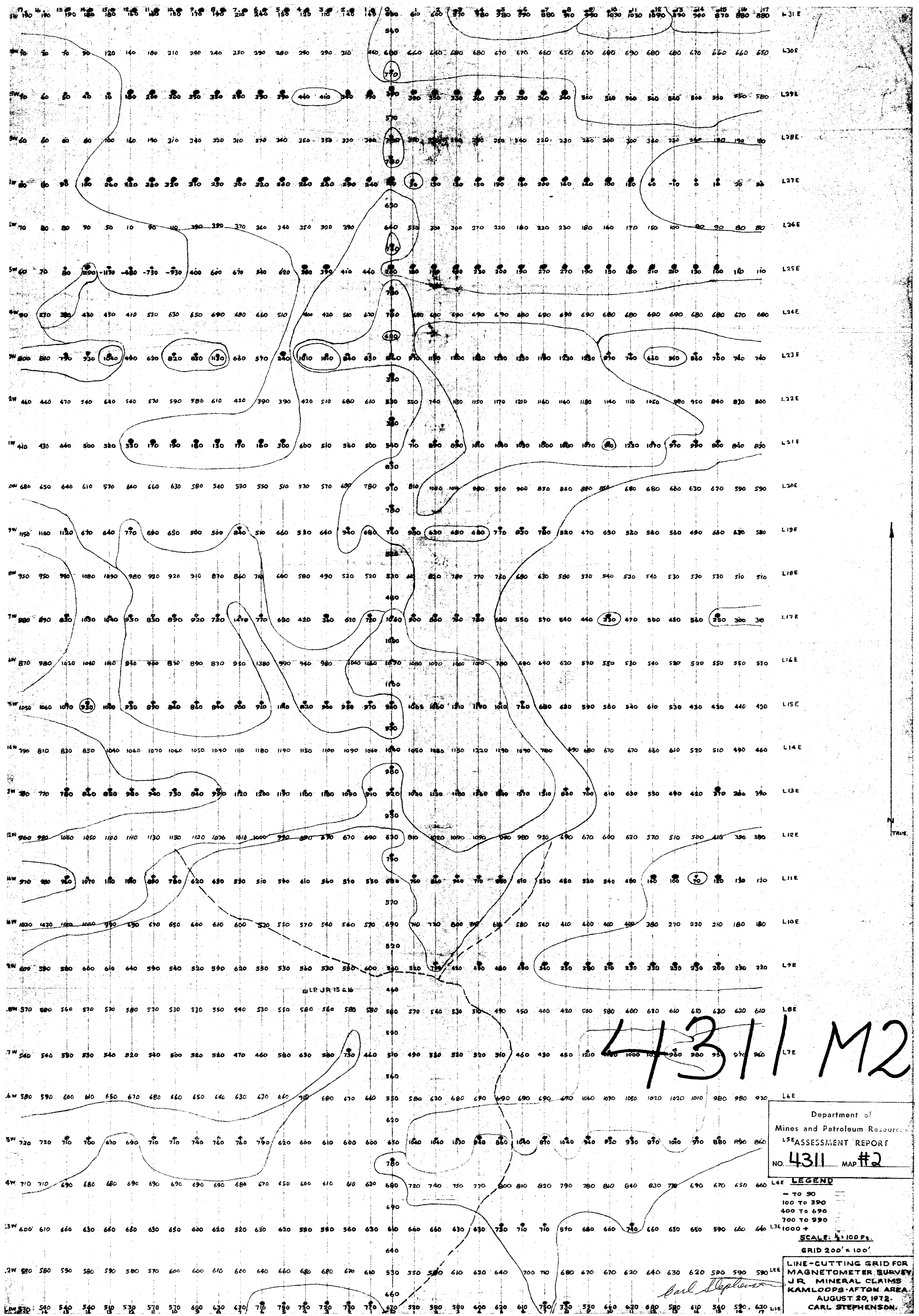
Carl Stephenson

Department of
Mines and Petroleum Resources
ASSESSMENT REPORT
NO. **4311** MAP #1

INDEX MAP OF SURVEY GRID ON
JR MC NOS. 1 TO 20 INCL. 8 MI. WES
OF KAMLOOPS ON SOUTH SIDE OF
KAMLOOPS LAKE, KAMLOOPS M.D.
RECORD NOS 110390 TO 110404 INCL.
PROPERTY OF SYNARO DEV. LTD. M.P.L.
SCALE 1" = 750'
GRID 200' X 100' WORK COMMENCED
APPROX. 20 LINE MILES. JUNE 28/72
COMPLETED JULY 4/72



Carl Stephenson



Department of
Mines and Petroleum Resources
L5E ASSESSMENT REPORT
NO. 4311 MAP #2

LEGEND
 - TO 90
 100 TO 390
 400 TO 690
 700 TO 990
 L3E 1000 +

SCALE: 1/4" = 100 FT.
 GRID 200' x 100'

LINE-CUTTING GRID FOR
 MAGNETOMETER SURVEY
 J.R. MINERAL CLAIMS
 KAMLOOPS-AFTON AREA
 AUGUST 20, 1972
 CARL STEPHENSON

4311 M2

LR JR 15 616

Carl Stephenson