

4312
92I/9W

D. W. T. HOLDINGS LTD.
SUITE 102-2222 BELLEVUE AVENUE
WEST VANCOUVER, B.C.

REPORT ON A

MAGNETOMETER SURVEY
ON DAVE CLAIMS 38A, 42A, 43A AND 44A
TOWNSHIP 19, RANGE 18, W6
JACKO LAKE AREA
KAMLOOPS MINING DIVISION
KAMLOOPS, B.C.

N. LAT. 50°-37'

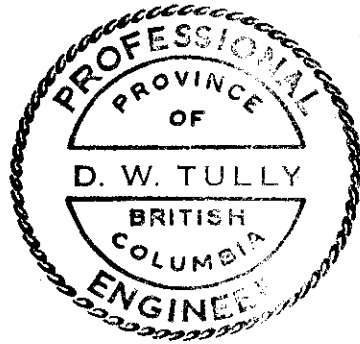
W. LONG. 120°-23'

FOR

MINEX DEVELOPMENT LTD. (N.P.L.)
~~210-470 GRANVILLE STREET~~
VANCOUVER 2, B.C.

Department of
Mines and Geotechnical Resources
A Technical REPORT
NO. 4312 MAP

BY



DONALD W. TULLY, P. ENG.

APRIL 28, 1973

WEST VANCOUVER, B.C.

D. I. T. HOLDINGS LTD.

SUITE 102 - 2222 BELLEVUE AVENUE
WEST VANCOUVER, B. C.

TABLE OF CONTENTS

	<u>Page</u>
SUMMARY AND CONCLUSIONS.....	1
INTRODUCTION.....	1
PROPERTY LOCATION, ACCESS, TOPOGRAPHY.....	2
CLAIMS.....	2
MAGNETOMETER SURVEY - GROUND CONTROL.....	3
- INSTRUMENT.....	4
- DIURNAL VARIATIONS.....	4
- RESULTS.....	4
TIME DISTRIBUTION - COSTS.....	5
CERTIFICATE.....	6

MAPS

- #1 LOCATION MAP..... Following Page 1
- #2 PLAN OF MAGNETOMETER READINGS (Scale 1" = 100')..... (In Pocket)
- #3 GEOLOGICAL SURVEY OF CANADA GEOPHYSICS PAPER #5216.. (In Pocket)

D. I. T. HOLDINGS LTD.

SUITE 102 - 2222 BELLEVUE AVENUE
WEST VANCOUVER, B. C.

SUMMARY AND CONCLUSIONS

Magnetometer readings were taken on a 100-foot square grid over Dave claims 38A, 42A, 44A and the west half of Dave 43A. Open rolling topography allowed the simple construction of a grid over the claims using chain, compass and tie-in to local landmarks.

Results showed minor magnetic variation over Dave claims 38A and 42A.

Significant magnetic variation was found trending in a northeast direction over Dave claim 44A and the adjoining west half of Dave 43A.

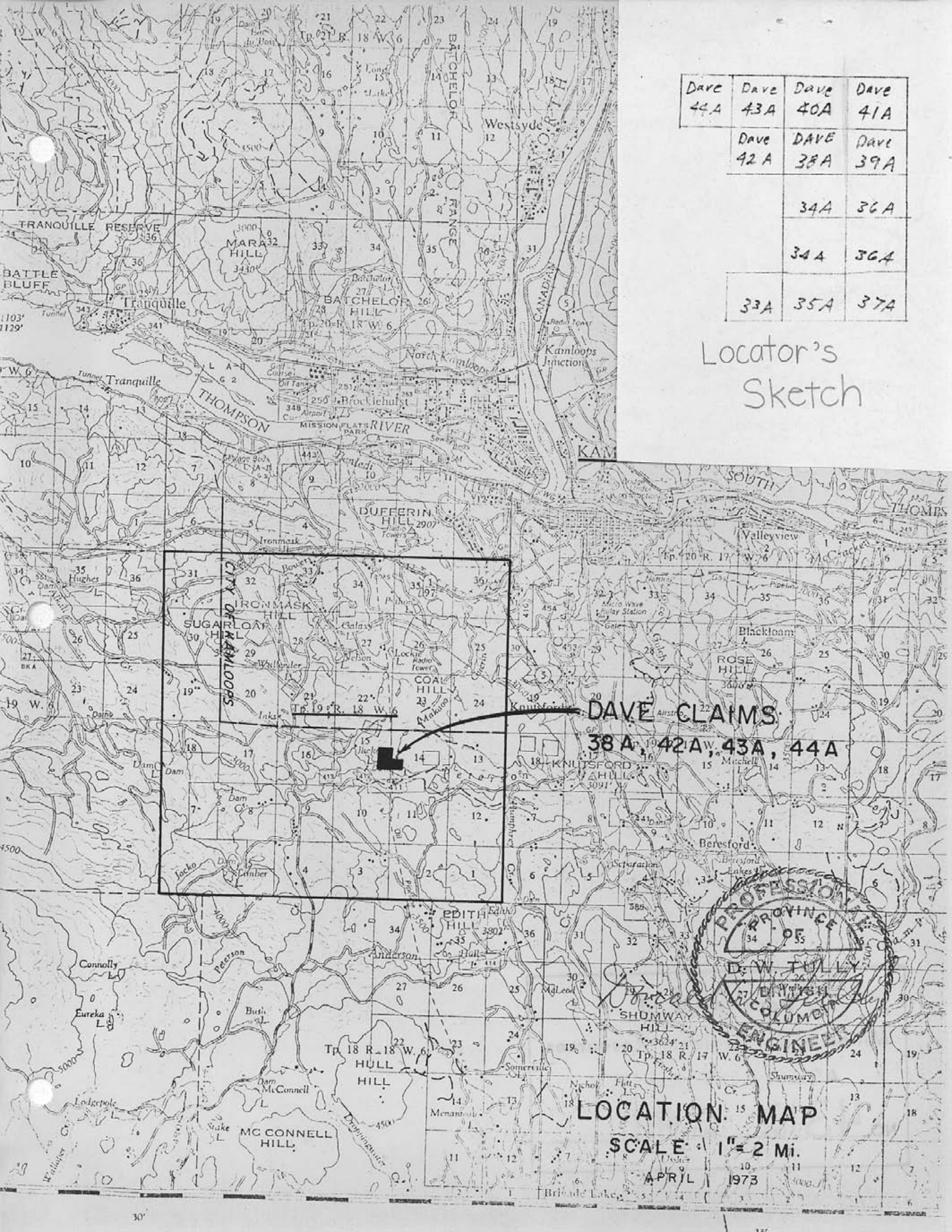
It is concluded from surface evidence of copper minerals seen in rock outcrops on Dave claim 43A there could be a possible relationship between magnetically "low" areas and copper mineralization within the confines of the magnetometer survey.

INTRODUCTION

The writer undertook the magnetometer survey with the purpose of outlining on the ground over the Dave claims any magnetic anomalies hitherto unpublished but reasoned to exist from a study of Geological Survey of Canada Geophysics Paper #5216.

Dave 44A	Dave 43A	Dave 40A	Dave 41A
Dave 42A	DAVE 38A	Dave 39A	
		34A	36A
		34A	36A
33A	35A	37A	

Locator's
Sketch



DAVE CLAIMS
38A, 42A, 43A, 44A



LOCATION MAP

SCALE 1" = 2 Mi.

APRIL 1973

D. I. T. HOLDINGS LTD.

SUITE 102 · 2222 BELLEVUE AVENUE
WEST VANCOUVER, B. C.

PROPERTY LOCATION, ACCESS, TOPOGRAPHY

The Dave claims are located in Township 19, Range 18, W6, Section 14-15 about five miles south of Kamloops, British Columbia.

Access is by paved highway from Kamloops to Knutsford and thence by gravel road via the Edith Lake and Goose Lake routes to Peterson Creek. It is possible to drive on local roads over much of the claim area by ordinary automobile.

The topography varies between 3000 and 3600 feet above sea-level which is mostly open, rolling and undulating ranchland. Scattered groves of pine and spruce occur over Dave claims 43A and 44A.

CLAIMS

The claims are recorded in the Kamloops Mining Division as follows:

<u>Claim Name</u>	<u>Record Number</u>
Dave 38A	107443
Dave 42A	107447
Dave 43A	107448
Dave 44A	107449

D. I. T. HOLDINGS LTD.

SUITE 102 - 2222 BELLEVUE AVENUE
WEST VANCOUVER, B. C.

MAGNETOMETER SURVEY

The field survey was performed on March 2-5,
9-12 inclusive, 1973.

Ground Control

A ground control grid was established by measuring with chain and direction by compass between claim posts. A baseline was laid out starting at the initial posts of Dave claims 42A - 43A going westward to the location of the respective final posts then continuing on westward to the final post of Dave claim 44A. This baseline was then produced eastward to the final post of Dave claim 38A. Intervals of 100 feet were marked on the ground with flagging.

The location line between the final and the initial post of Dave 38A was measured southerly and marked with flagging at each 100-foot interval. Parallel lines were established southerly from the initial and final posts of Dave 42A. A parallel line was then established 1500 feet south of the baseline along the south boundary of Dave claims 38A and 42A and marked with flagging.

A grid was then established over Dave claim 44A from the above mentioned baseline in the same manner using the points established on the perimeter of the claim for tie-in.

A tie-line was established diagonally across Dave 38A in a northwest direction from McWilliam, Whyte & Goble survey point #0 near the south boundary of Dave 38A to McElhanney survey point #7900 at the position of the initial post of Dave 42A and Dave 43A.

D. I. T. HOLDINGS LTD.

SUITE 102 - 2222 BELLEVUE AVENUE
WEST VANCOUVER, B. C.

Compass bearings were taken from each 100-foot point on the baseline and extended by chain measurement and marked by flagging over each claim using the previously established points.

Instrument

Scintrex magnetometer model MF-1 #901407 was used for the survey.

Diurnal Variation

Base stations were established at McWilliam, Whyte & Goble survey point #0 and also at 1200 N/W on the baseline near the initial post of Dave 44A.

Base station readings were taken approximately every three hours. Maximum diurnal variations up to 55 gammas were recorded and corrections applied to the readings for map plotting.

Results

Results of the survey are plotted on the accompanying plan on scale 1" = 100'.

Total magnetic intensity was found to be slight over Dave 38A and 42A. Total local magnetic relief was observed to be 295 gammas.

On Dave claim 44A a zone of magnetic "highs" trends northeasterly across the claim to the northwest part of Dave 43A.

D. I. T. HOLDINGS LTD.

SUITE 102 - 2222 BELLEVUE AVENUE
WEST VANCOUVER, B. C.

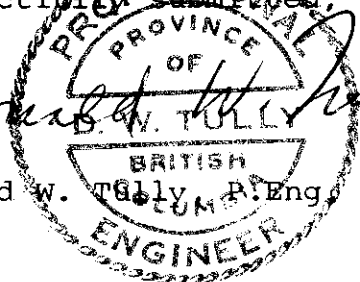
Magnetic "low" areas appear to couple with the magnetically "high" areas. Local magnetic intensity was found to vary between 390 and 1520 gammas.

TIME DISTRIBUTION - COSTS

March	2	-	D.W. Tully	-	field work grid layout	\$	100.00	
"	3	-	"	"	- field work grid layout		100.00	
"	4	-	"	"	- field work magnetometer readings		100.00	
"	5	-	"	"	- field work magnetometer readings		100.00	
"	9	-	"	"	- field work grid layout		100.00	
"	10	-	"	"	- field work 1/2 grid layout and magnetometer readings		100.00	
"	11	-	"	"	- field work magnetometer readings		100.00	
"	12	-	"	"	- field work magnetometer readings		100.00	
April	28	-	"	"	- compiling field results and reports		100.00	
"	26	-	Versatile Industries Ltd.	-	drafting		127.01	
								<hr/>
Total.....							\$	1,027.01

Respectfully submitted,

Donald W. Tully



Donald W. Tully, P. Eng.

April 28, 1973

(over)

Declared before me at the *City*
of *Vancouver*, in the
Province of British Columbia, this *9*
day of *May*, 1973, A.D.

Donald W. Tully

L. Stannett
A Commissioner for taking Affidavits within British Columbia or
A Notary Public in and for the Province of British Columbia.

SUB-MINING RECORDER

Donald W. Tully

D. I. T. HOLDINGS LTD.

SUITE 102 · 2222 BELLEVUE AVENUE
WEST VANCOUVER, B. C.

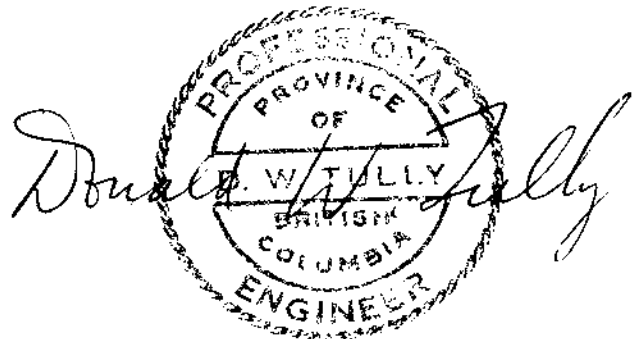
CERTIFICATE

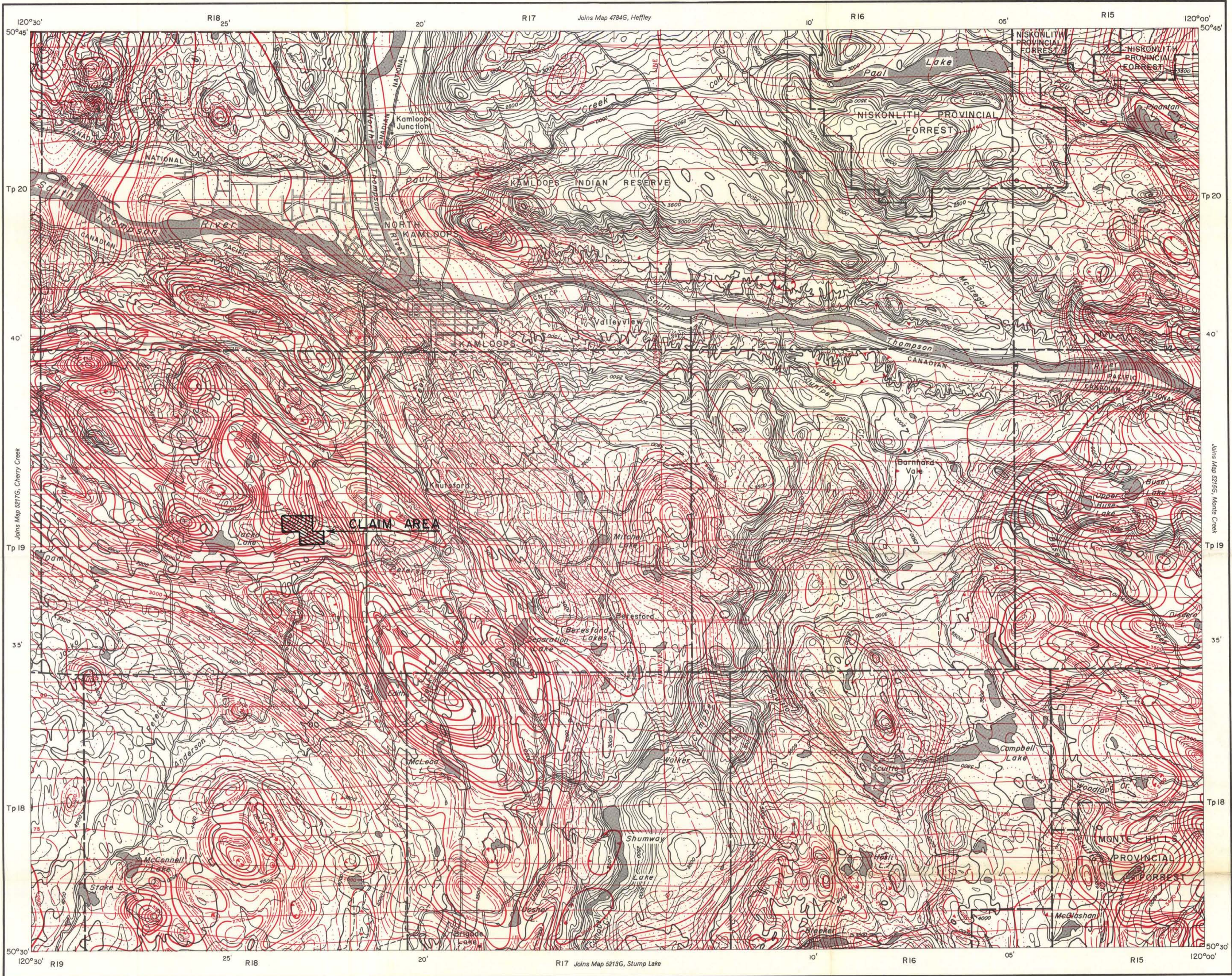
I, DONALD WILLIAM TULLY, of the Municipality of West Vancouver, Province of British Columbia, hereby certify as follows:

1. I am a Consulting Geologist with an office at Suite 102, 2222 Bellevue Avenue, West Vancouver, British Columbia.
2. I am a registered professional engineer in the provinces of British Columbia and Ontario.
3. I graduated with a degree of Bachelor of Science, Honours Geology, from McGill University in 1943.
4. I have practiced my profession for twenty-eight years.
5. I have a direct interest in the Dave claims as President and Director of Minex Development Ltd. (N.P.L.).
6. This report dated April 28, 1973, is based on the personal execution of the field work and knowledge of the claim area.

DATED at West Vancouver, British Columbia, this 28th day of April, 1973.

Donald W. Tully, P.Eng.
Consulting Geologist





MAP 5216G

KAMLOOPS BRITISH COLUMBIA

- ISOMAGNETIC LINES (total field)
- 500 gammas
 - 100 gammas
 - 20 gammas
 - 10 gammas
 - Magnetic depression

Flight lines

Flight altitude 1000 feet above ground level

Department of
Mines and Petroleum Resources
ASSESSMENT REPORT
NO. 4312 MAP #3

Scale: One Inch to One Mile = $\frac{1}{63,360}$ Miles

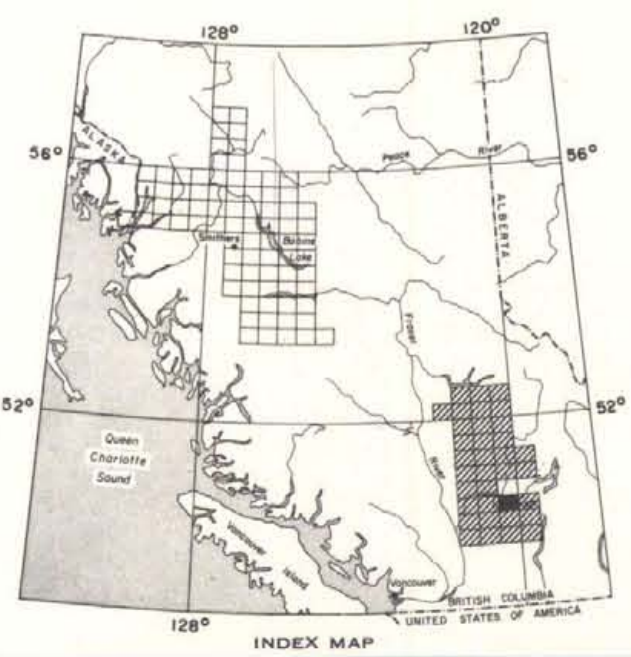
Airborne Magnetic Survey, November 1966 to May 1968
by Lockwood Survey Corporation Ltd.

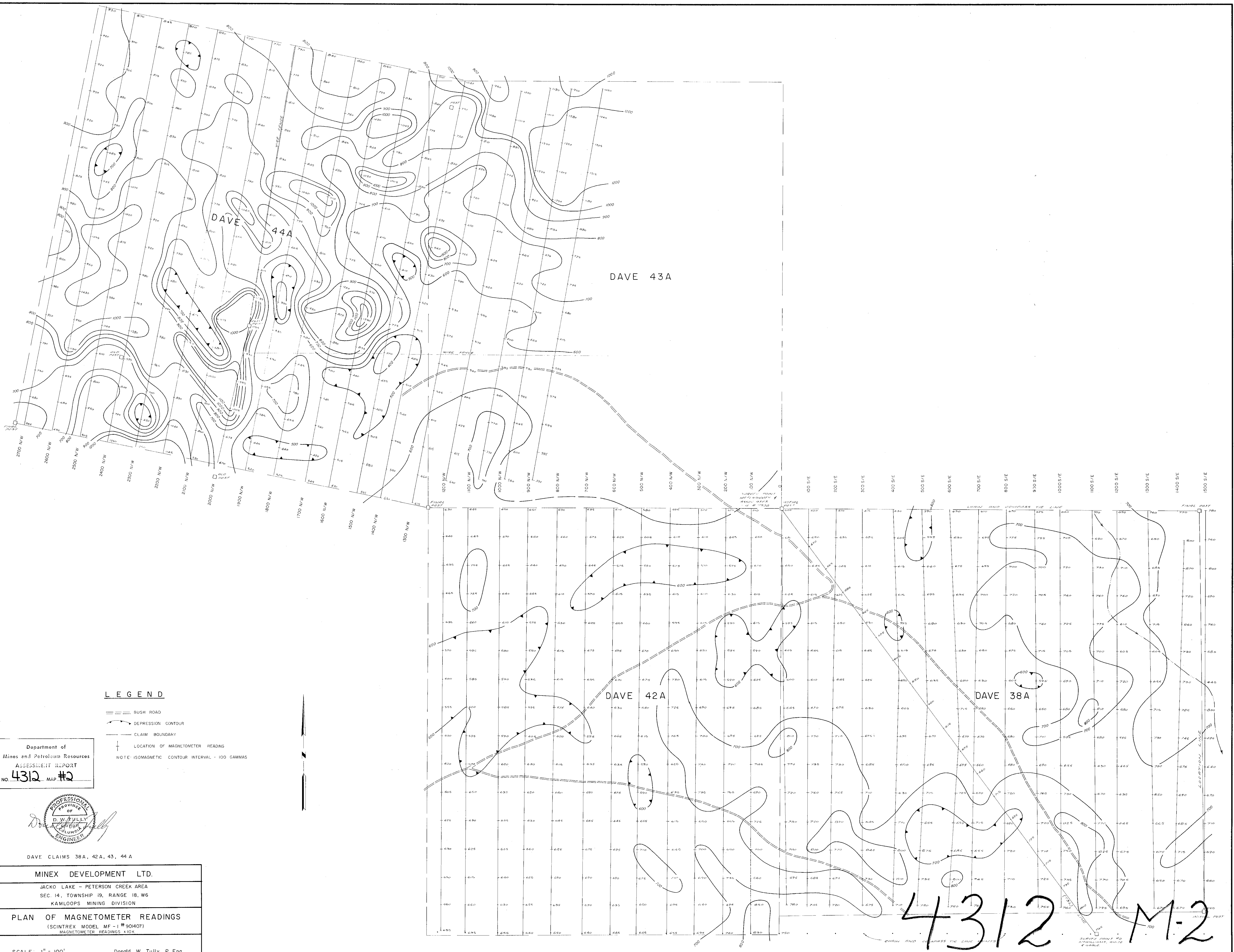
The planimetry for this map was obtained from
topographical map sheets published by the
Department of Energy, Mines and Resources, Ottawa.

No correction has been made for regional variation.

The magnetic data on this map were compiled from information recorded along the flight lines shown. The anomalies expressed by the magnetic contours are dependent on the variable magnetic intensities of the underlying rocks, and may be due to conditions near, or at unknown depths below the surface. High magnetic anomalies normally indicate the presence of basic rocks, such as diabase, gabbro, or serpentinite, which have a relatively high iron content, but in special instances may be due, or partly due, to concentrations of magnetic minerals. By means of the magnetic anomalies, various rock bodies or structural features, such as faults or folds, may be traced into, or across, areas of few or no outcrops. In many instances, however, no interpretation of particular anomalies may be possible without further geological information.

GEOPHYSICS PAPER 5216
KAMLOOPS
BRITISH COLUMBIA
SHEET 92 1/9

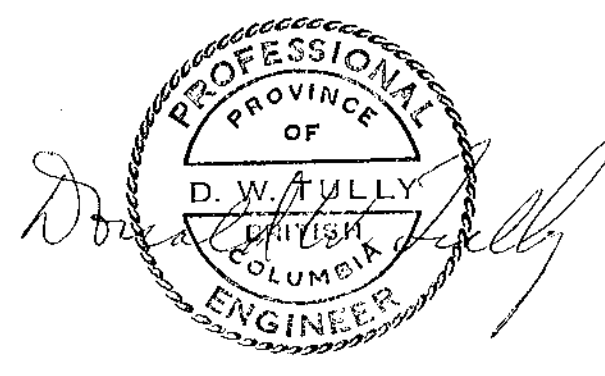




LEGEND

- BUSH ROAD
 - DEPRESSION CONTOUR
 - CLAIM BOUNDARY
 - LOCATION OF MAGNETOMETER READING
- NOTE: ISOMAGNETIC CONTOUR INTERVAL - 100 GAMMAS

Department of
Mines and Petroleum Resources
ASSESSMENT REPORT
NO. 4312 MAP #2



DAVE CLAIMS 38A, 42A, 43, 44A

MINEX DEVELOPMENT LTD.
JACKO LAKE - PETERSON CREEK AREA SEC. 14, TOWNSHIP 19, RANGE 18, W6 KAMLOOPS MINING DIVISION
PLAN OF MAGNETOMETER READINGS (SCINTREX MODEL MF-1 #90407) MAGNETOMETER READINGS X10K

SCALE: 1" = 100' Donald W. Tully, P. Eng

(TO ACCOMPANY REPORT DATED - APRIL 28, 1972)

4312 M-2