

4314

D. I. T. HOLDINGS LTD.
SUITE 102-222 BELLEVUE AVENUE
WEST VANCOUVER, B.C.

REPORT
ON A

921/9W

MAGNETOMETER SURVEY
ON CLAIMS

MAP 2FR, 3FR, 4FR,
PAM 12,13,14,15,16,17,18,19,20,22,23,28,
WADE 3, DON 4FR, 5FR, DON 7,8, DON 9 FR

TOWNSHIP 19, RANGE 18, WEST 6
JACKO LAKE AREA
KAMLOOPS MINING DIVISION
KAMLOOPS, BRITISH COLUMBIA

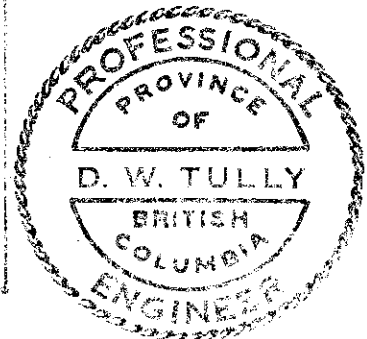
N.LAT. 50°-37'

W.LONG. 120°-23'

FOR

MINEX DEVELOPMENT LTD. (N.P.L.)
210-470 GRANVILLE STREET
VANCOUVER 2, B.C.

Department of
Mines and Technical Resources
ASBESTOS
NO. 4314
BY



DONALD W. TULLY, P.ENG.

MAY 18, 1973

WEST VANCOUVER, B.C.

D. I. T. HOLDINGS LTD.

SUITE 102 - 2222 BELLEVUE AVENUE
WEST VANCOUVER, B.C.

TABLE OF CONTENTS

	<u>Page</u>
SUMMARY AND CONCLUSIONS.....	1
INTRODUCTION.....	1
PROPERTY LOCATION, ACCESS, TOPOGRAPHY.....	2
CLAIMS.....	3
PREVIOUS DEVELOPMENT - REFERENCES.....	3
MAGNETOMETER SURVEY - GROUND CONTROL.....	4
- INSTRUMENT USED.....	5
- DIURNAL VARIATIONS.....	5
- RESULTS.....	5
TIME AND DISTRIBUTION - COSTS.....	7
CERTIFICATE.....	8

MAPS

#1 LOCATION MAP.....	Following Page 1
#2 PLAN OF MAGNETOMETER READINGS (Scale 1" = 100').....	In Pocket
#3 PLAN OF MAGNETOMETER READINGS (Scale 1" = 500').....	In Pocket
#4 GEOLOGICAL SURVEY OF CANADA GEOPHYSICS PAPER #5216G..	In Pocket

D. I. T. HOLDINGS LTD.

SUITE 102 · 2222 BELLEVUE AVENUE
WEST VANCOUVER, B.C.

SUMMARY AND CONCLUSIONS

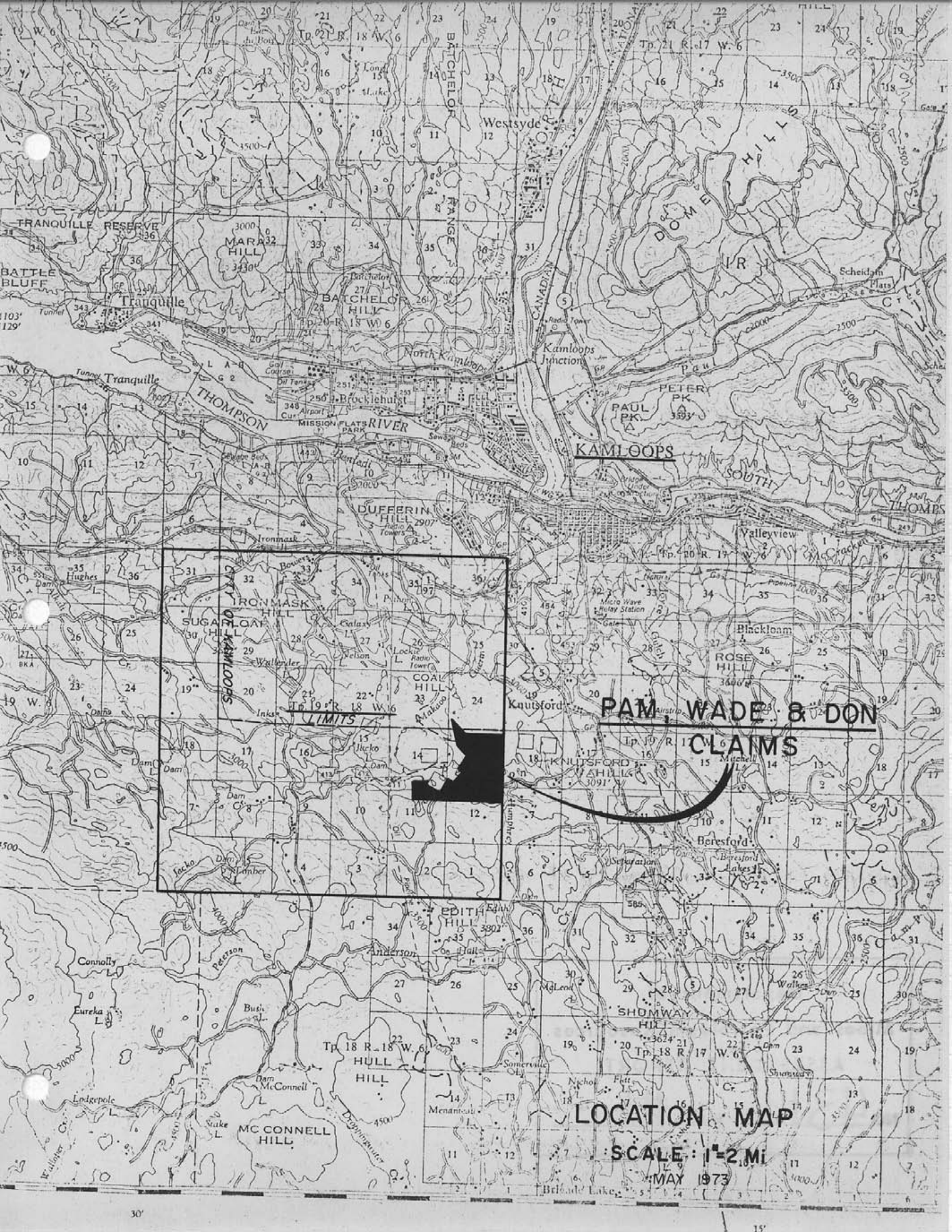
A compilation of magnetometer survey work done by Dr. R.H. Seraphim, P.Eng., in November-December, 1972, and again by D.W. Tully, P.Eng., in January-February, 1973, shows a pattern of small local areas having slightly lower than average magnetic intensity trending northeasterly across the claim group.

Several of these magnetic low areas appear to be related to an area of higher magnetic intensity at the north end of claim Map 2Fr and in the Buda Shaft area on claim Pam 21.

Rock outcrops are scarce. Bedrock geology is assumed to be largely Nicola volcanics and related basic intrusives from the results of the magnetometer survey. Phases of the Iron Mask batholith are also believed to underlie part of the claim area. Picrite, of post Nicola Age, is exposed on Map 2Fr and is reflected in isomagnetic contours of higher magnetic intensity.

INTRODUCTION

Dr. R.H. Seraphim conducted a magnetometer survey on scale 1" = 500 feet over the Pam, Map, Wade and Don claims in November-December, 1972, and was submitted under date of January 5, 1973. His detailed magnetometer work in the Buda Shaft area on Map 2Fr was also previously submitted on scale 1" = 100 feet. Detailed magnetometer work by D.W. Tully in January-February, 1973, is discussed in this report.



KAMLOOPS

PAM WADE & DON CLAIMS

LOCATION MAP

SCALE: 1"=2 MI

MAY 1973

D. I. T. HOLDINGS LTD.

SUITE 102 - 2222 BELLEVUE AVENUE
WEST VANCOUVER, B.C.

It is known that copper mineralization appears in some cases to occur within or on the flanks of an area of lower magnetic relief relative to the surrounding isomagnetic background.

A study of Geological Survey of Canada aeromagnetic map 5216G suggests magnetic anomalies in the area of the Map, Pam and Don claims in the Peterson Creek - Jacko Lake area south of Kamloops.

The purpose of this report is to cover the results of a detailed ground survey to search for relative magnetic low areas on the ground. A map showing the claims and magnetometer readings on scale 1" = 500 feet accompanies this report. A second plan of magnetometer results on claims Pam 13,16,23,28, Map 2Fr, 4Fr on scale 1" = 100 feet is also enclosed.

PROPERTY LOCATION, ACCESS, TOPOGRAPHY

The property is located about five miles south of Kamloops, British Columbia, in Township 19, Range 18, West 6, just beyond the southern limit of the new boundary of the City of Kamloops.

Access is by paved highway (No. 5) to Knutsford and thence via the Edith Lake and Goose Lake gravel roads to Peterson Creek at the location of Morrison Ranches Ltd. The claim area is open ranchland and can be traversed by ordinary automobile under most circumstances.

Open, undulating grassland, mostly under grazing lease, characterizes the topography. Elevations vary between 3000 and 3600 feet above sea-level.

D. I. T. HOLDINGS LTD.

SUITE 102 - 2222 BELLEVUE AVENUE
WEST VANCOUVER, B. C.

CLAIMS

The claims are recorded in the Kamloops Mining
Division as follows:

<u>Claim Name</u>	<u>Record No.</u>	<u>Record Holder</u>	<u>Grouping</u>
Map 2Fr	92948 P	Rolling Hills Copper Mines	Jacko East
" 3Fr	123127 P	Minex Development Ltd.	" "
" 4Fr	123229 P	" " "	" "
Pam 12	41330 A	Rolling Hills Copper Mines	" "
" 13	1 A	" " " "	" "
" 14	2 A	" " " "	" "
" 15	3 A	" " " "	" "
" 16	4 A	" " " "	" "
" 17	5 A	" " " "	" "
" 18	6 A	" " " "	" "
" 19	7 A	" " " "	" "
" 20	8 A	" " " "	" "
" 21	9 A	" " " "	" "
" 22	41340 A	" " " "	" "
" 23	1 A	" " " "	" "
" 28	41346 A	" " " "	" "
" 29	7 A	" " " "	" "
Wade 3	41625 B	" " " "	" "
Don 4Fr	110693 D	Minex Development Ltd.	Jacko West
" 5Fr	4 D	" " "	Jacko East
" 7	123078 N	" " "	" "
" 8	9 N	" " "	" "
" 9Fr	123080 N	" " "	" "

PREVIOUS DEVELOPMENT - REFERENCES

Dr. R.H. Seraphim, in his report to Minex Development Ltd. dated January 5, 1973, entitled "Report on the Rolling Hills and Dave Claims - Jacko Lake Area", discusses the results of a previous magnetometer survey along grid lines spaced 500 feet apart on the ground.

Rolling Hills Copper Mines Ltd. have previously filed

D. I. T. HOLDINGS LTD.

SUITE 102 - 2222 BELLEVUE AVENUE
WEST VANCOUVER, B.C.

assessment work on the Pam claims. Vanco Explorations also have filed assessment reports on these claims.

The following includes some of the available reports on the Map, Pam and Don claims:

1. "Dave and Bev claims" Feb. 2, 1972 - W.R. Bacon, P.Eng.
2. "Rolling Hills and Dave claims" Mar. 13, 1972 - R.H. Seraphim, P.Eng.
3. "Geological Report and Magnetic Survey on Rolling Hills claims, Jacko Lake" April 24, 1972 - R.H. Seraphim, P.Eng.
4. "Minex-Rolling Hills - Summary of Percussion Drilling" May 19, 1972 - R.H. Seraphim, P.Eng.
5. "Rolling Hills and Dave claims - Jacko Lake Area" Minex Development Ltd. Aug. 22, 1972 - R.H. Seraphim, P.Eng.
6. "Geological Report on MAP 2 Fr." Nov. 3, 1972 - R.H. Seraphim, P.Eng.
7. "Rolling Hills and Dave claims - Jacko Lake Area" Minex Development Ltd. Nov. 29, 1972 - R.H. Seraphim, P.Eng.
8. "Rolling Hills and Dave claims - Jacko Lake Area" Minex Development Ltd. Jan. 5, 1973 - R.H. Seraphim, P.Eng.

MAGNETOMETER SURVEY

The field work was done on January 8,12,13,19,20,21, 23,24,25,26 and February 2 through 5 inclusive, 1973.

Ground Control

Dr. R.H. Seraphim previously established a baseline noted as Burns Baseline on the accompanying plan showing the magnetometer readings. Burns Baseline, RHS Baseline and TB Line as shown on the plan scale 1" = 500 feet were the baselines used

D. I. T. HOLDINGS LTD.

SUITE 102 - 2222 BELLEVUE AVENUE
WEST VANCOUVER, B.C.

to control the survey grid lines which were run by chain and compass and marked by flagging.

Instrument Used

The magnetometer instrument used during the field work was a Scintrex Model MF-1, Serial No. 901407.

Diurnal Variations

Base stations were established at the northeast corner of Pam 22 on the northwest end of TB Line and at 0 on the Baseline on claim Pam 13.

Readings at base station locations were taken at approximately 3 hour intervals during the survey work day.

Variation in base station readings were found to vary up to 90 gammas and the correction applied.

Results

Readings of the survey conducted in December, 1972 are plotted on the plan accompanying this report and were discussed previously by Dr. R.H. Seraphim. A correction factor of 618 gammas was found to be the value of magnetic intensity which best equated the December, 1972, survey with the later January-February magnetometer work. The lines run during both surveys are compiled on the plan scale 1" = 500 feet.

During the January-February survey 706 readings were taken.

D. I. T. HOLDINGS LTD.

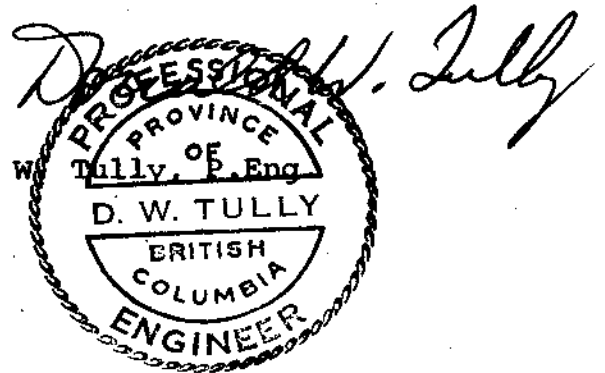
SUITE 102 - 2222 BELLEVUE AVENUE
WEST VANCOUVER, B.C.

An area of lower magnetic intensity was found in the northwest part of claims Pam 22 and Don 5 Fr. An area of lower magnetic intensity was also noted on claims Pam 13, 16 and Map 2 Fr. Small lows were found on Pam 23 and again on Pam 28. A general magnetic low lies over Pam 12, 14 and 15.

A magnetic high at the north end of Map 2 Fr. is due to picrite from an observation on a lone outcrop of rock in this area. The same is apparent in the Buda Shaft area on claim Pam 21 and the south end of Map 2 Fr. where picrite also outcrops.

Respectfully submitted,

Donald W.



D. I. T. HOLDINGS LTD.

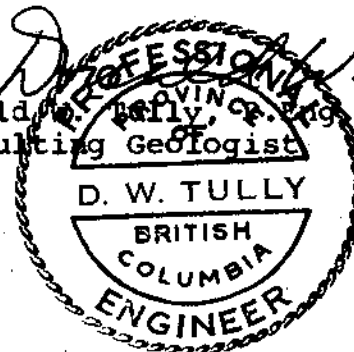
SUITE 102 - 2222 BELLEVUE AVENUE
WEST VANCOUVER, B.C.

TIME AND DISTRIBUTION - COSTS

January	8/73	-	D.W. Tully	-	Field work - grid layout & magnetometer readings	\$ 100.00
"	12/73	-	"	"	"	100.00
"	13/73	-	"	"	"	100.00
"	19/73	-	"	"	"	100.00
"	20/73	-	"	"	"	100.00
"	21/73	-	"	"	"	100.00
"	23/73	-	"	"	"	100.00
"	24/73	-	"	"	"	100.00
"	25/73	-	"	"	"	100.00
"	26/73	-	"	"	"	100.00
February	2/73	-	"	"	"	100.00
"	3/73	-	"	"	"	100.00
"	4/73	-	"	"	"	100.00
"	5/73	-	"	"	"	100.00
May 18/73		-	Versatile Industries Ltd.	-	drafting	248.87
May 18/73		-	D.W. Tully	-	report preparation	200.00
TOTAL.....						\$1848.87

DATED at West Vancouver, British Columbia, this 18th day of
May, 1973.

Donald W. Tully, C.E.
Consulting Geologist



Declared before me at the *City*
of *Vancouver*, in the
Province of British Columbia, this *23rd*
day of *May*, 1973

Donald W. Tully

Jan Paul SUB-MINING RECORDER
A Commissioner for taking Affidavits within British Columbia.
A Notary Public in and for the Province of British Columbia.

D. I. T. HOLDINGS LTD.

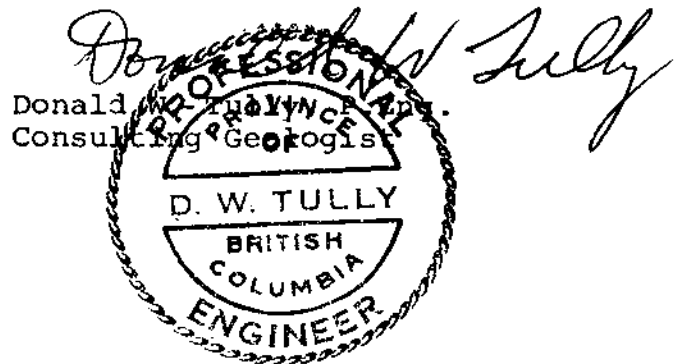
SUITE 102 - 2222 BELLEVUE AVENUE
WEST VANCOUVER, B.C.

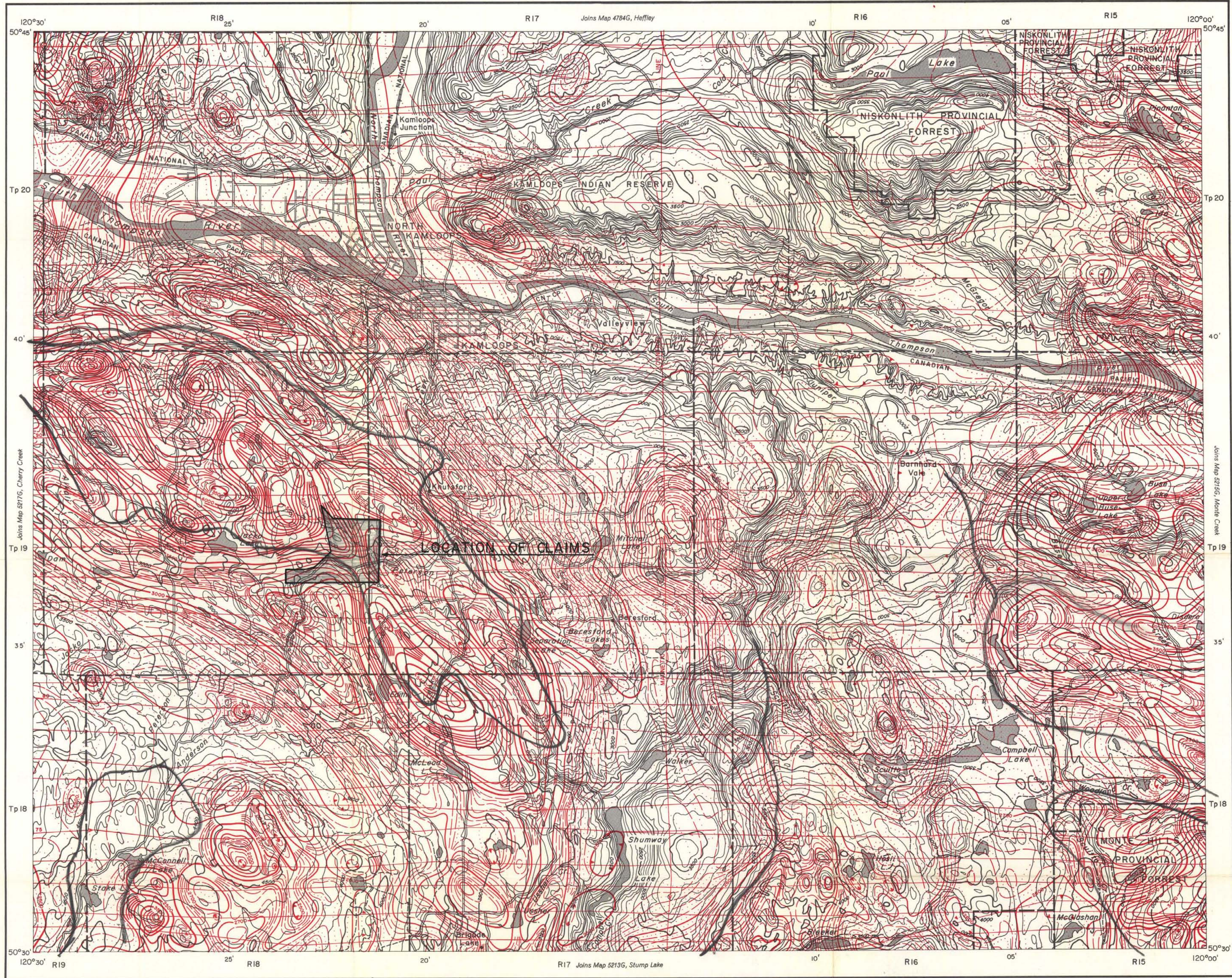
CERTIFICATE

I, DONALD WILLIAM TULLY, of the Municipality of West Vancouver, Province of British Columbia, hereby certify as follows:

1. I am a Consulting Geologist with an office at Suite 102, 2222 Bellevue Avenue, West Vancouver, British Columbia.
2. I am a registered Professional Engineer in the Provinces of British Columbia and Ontario.
3. I graduated with a degree of Bachelor of Science, Honours Geology, from McGill University in 1943.
4. I have practiced my profession for twenty-eight years.
5. I have a direct interest in the Map, Pam, Wade and Don claims as an Officer of Minex Development Ltd. (N.P.L.).
6. This report dated May 18, 1973, is based on a personal execution of the field work.

DATED at West Vancouver, British Columbia, this 18th day of May, 1973.





MAP 5216G

KAMLOOPS
BRITISH COLUMBIA

ISOMAGNETIC LINES (total field)

500 gammas
100 gammas
20 gammas
10 gammas
Magnetic depression
Flight lines
Flight altitude 1000 feet above ground level

Department of
Mines and Petroleum Resources
ASSESSMENT REPORT
NO. 4314 MAP #4

Scale: One Inch to One Mile = $\frac{1}{63,360}$
Miles

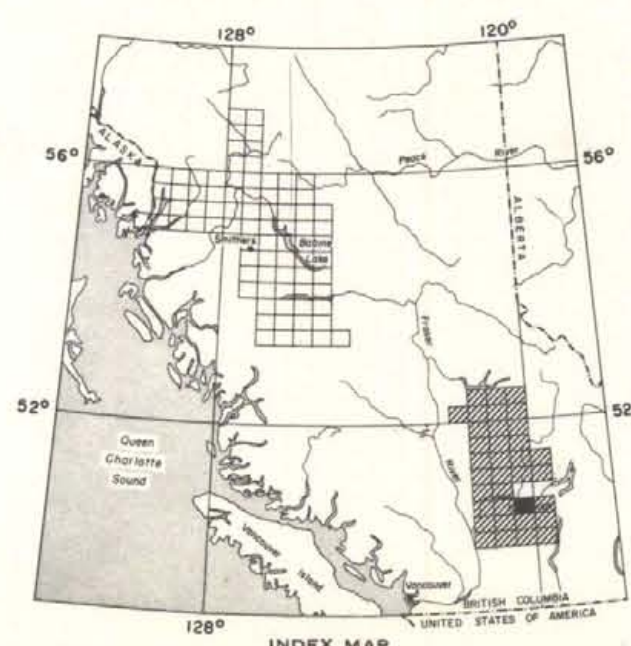
Airborne Magnetic Survey, November 1966 to May 1968
by Lockwood Survey Corporation Ltd.

The planimetry for this map was obtained from
topographical map sheets published by the
Department of Energy, Mines and Resources, Ottawa.

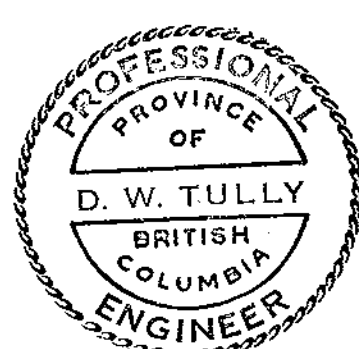
No correction has been made for regional variation.

The magnetic data on this map were compiled from information
recorded along the flight lines shown. The anomalies expressed by the
magnetic contours are dependent on the variable magnetic intensities of
the underlying rocks, and may be due to conditions near, or at unknown
depths below the surface. High magnetic anomalies normally indicate the
presence of basic rocks, such as diorite, gabbro, or serpentinite, which
have a relatively high iron content, but in special instances may be due,
or partly due, to concentrations of magnetic minerals. By means of the
magnetic anomalies, various rock bodies or structural features, such
as faults or folds, may be traced into, or across, areas of few or no outcrops.
In many instances, however, no interpretation of particular anomalies
may be possible without further geological information.

GEOPHYSICS PAPER 5216
KAMLOOPS
BRITISH COLUMBIA
SHEET 92 $\frac{1}{9}$



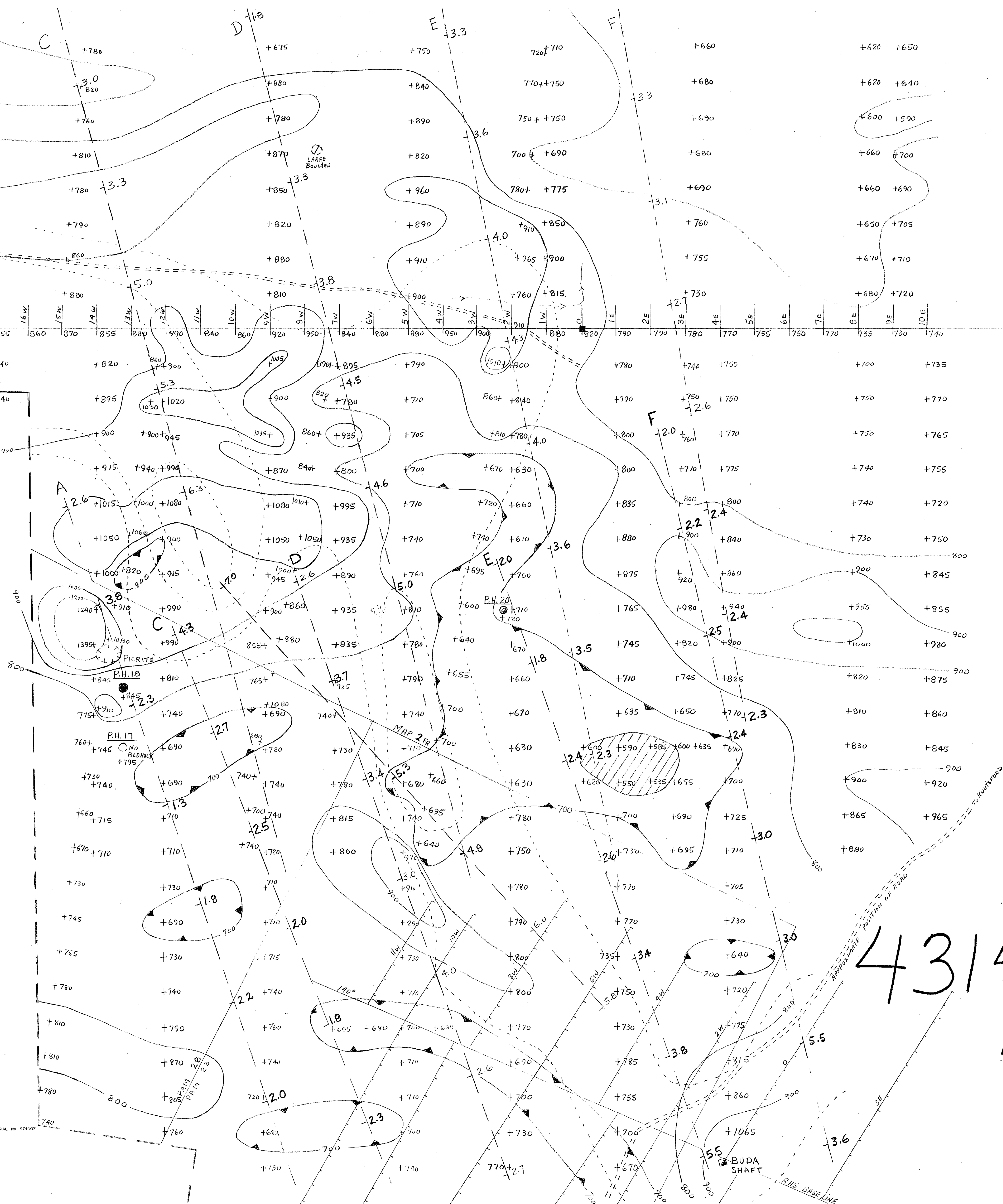
Department of
Mines and Petroleum Resources
ASSESSMENT REPORT
NO. 4314 MAP #2

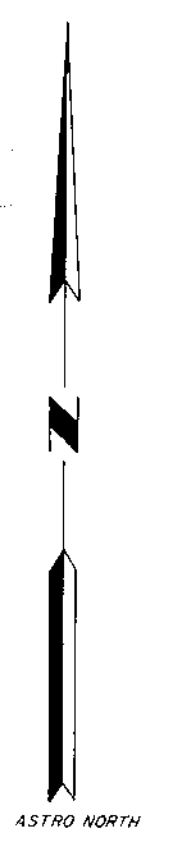
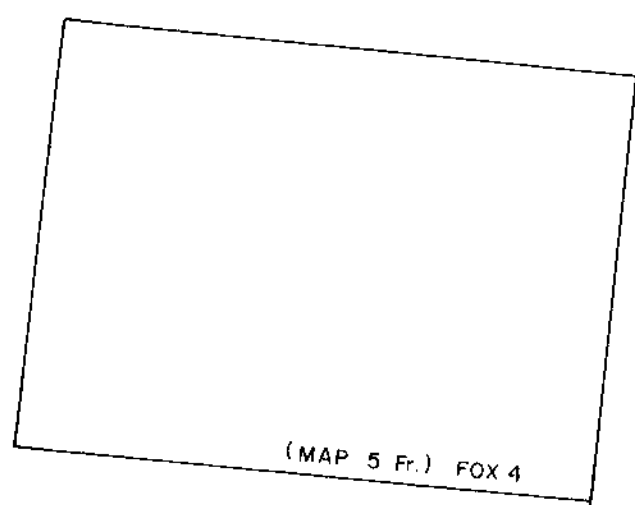
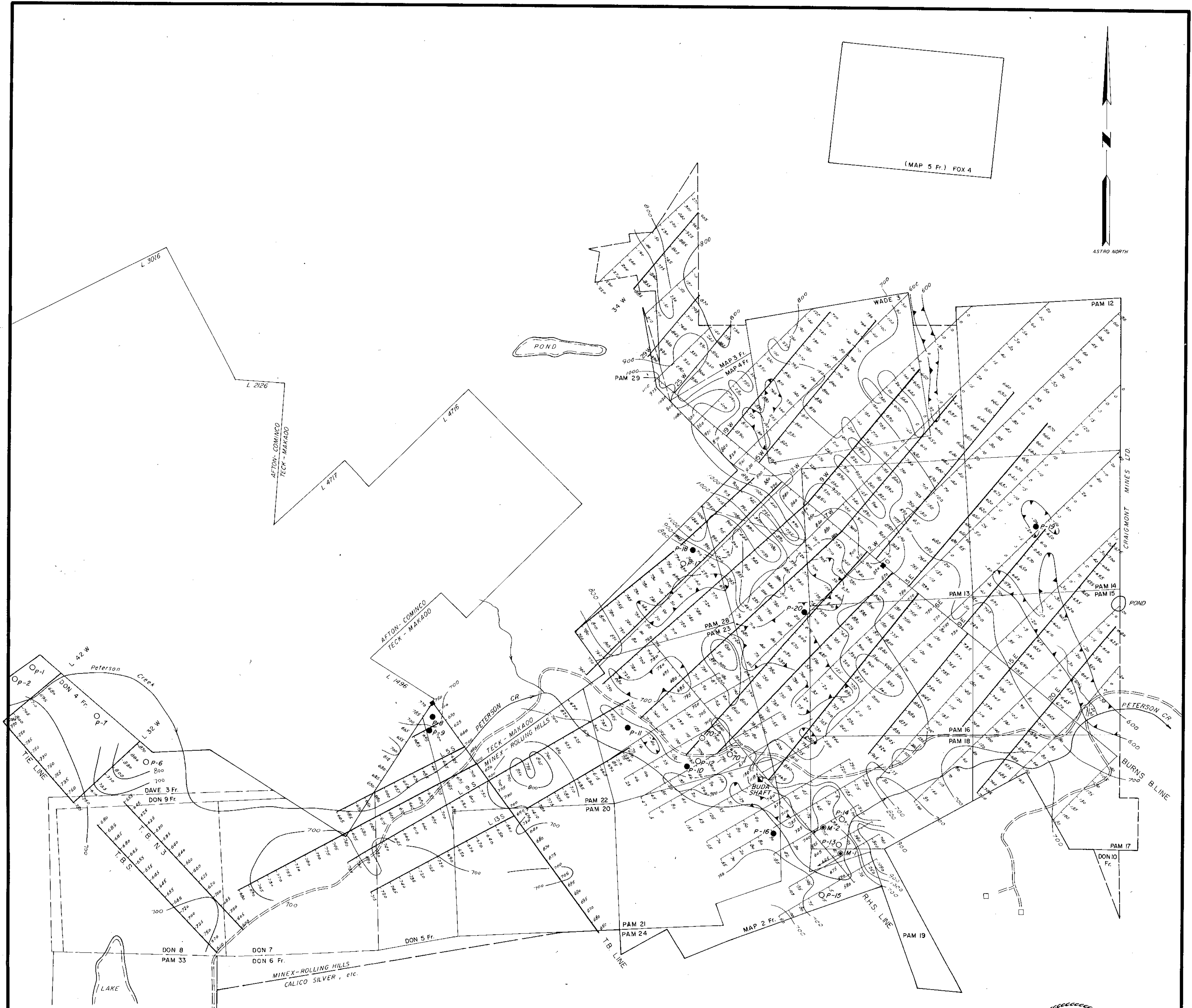


MINEX DEVELOPMENT LTD.
(MINEX-ROLLING HILLS COPPER MINES LTD.)
JACKO EAST GROUP-AGREEMENT 1972
PLAN OF MAGNETOMETER READINGS
D.W. Tully
SCALE: 1" = 100' MAY 14, 1973

LEGEND

- GRAVEL ROAD
- DIAMOND DRILL HOLE
- P.H. 10 PERCUSSION DRILL HOLE IN BEDROCK (1972)
- PERCUSSION DRILL HOLE IN OVERBURDEN ONLY (1972)
- DECEMBER 1972 SURVEY
- JANUARY - FEBRUARY 1973 SURVEY
- DEPRESSION CONTOUR (LOW)
- CONTOUR INTERVAL - 100 GAMMAS
- BASE STATION
- INDUCED POLARIZATION SURVEY LINE (P.F.E.)
- MAGNETOMETER INSTRUMENT USED - SINTREX MODEL MF-1 SERIAL NO. 90407



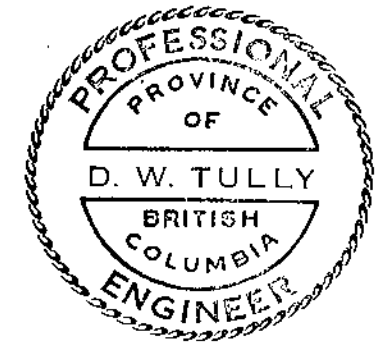


LEGEND

- GRAVEL ROAD
- DIAMOND DRILL HOLE
- P-18 PERCUSSION DRILL HOLE IN BEDROCK (1972)
- PERCUSSION DRILL HOLE IN OVERBURDEN ONLY (1972)
- DECEMBER 1972 SURVEY (ADD 618 GAMMAS TO EQUATE WITH JAN. - FEB. 1973 SURVEY)
- JANUARY - FEBRUARY 1973 SURVEY
- DEPRESSION CONTOUR (LOW)
- CONTOUR INTERVAL - 100 GAMMAS
- BASE STATION

MAGNETOMETER INSTRUMENT USED - SCINTREX MODEL MF-1 SERIAL No. 901407

Department of
Mines and Petroleum Resources
ASSESSMENT REPORT
NO. 4314 MAP #3



MINEX DEVELOPMENT LTD.
(MINEX-ROLLING HILLS COPPER MINES LTD.)
JACKO EAST GROUP-AGREEMENT 1972
DAVE 3 Fr, MAP 2 Fr, 3 Fr, 4 Fr, PAM 12, 13, 14, 15, 16, 17, 18, 20
PAM 28, 29, DON 4 Fr, 5 Fr, 6 Fr, DON 7, 8, 9 Fr. PAM 21, 22, 23
PLAN OF MAGNETOMETER READINGS
Donald W. Tully
SCALE: 1" = 500'
FEBRUARY 1973