

92I/9W
CONTROL SURVEY

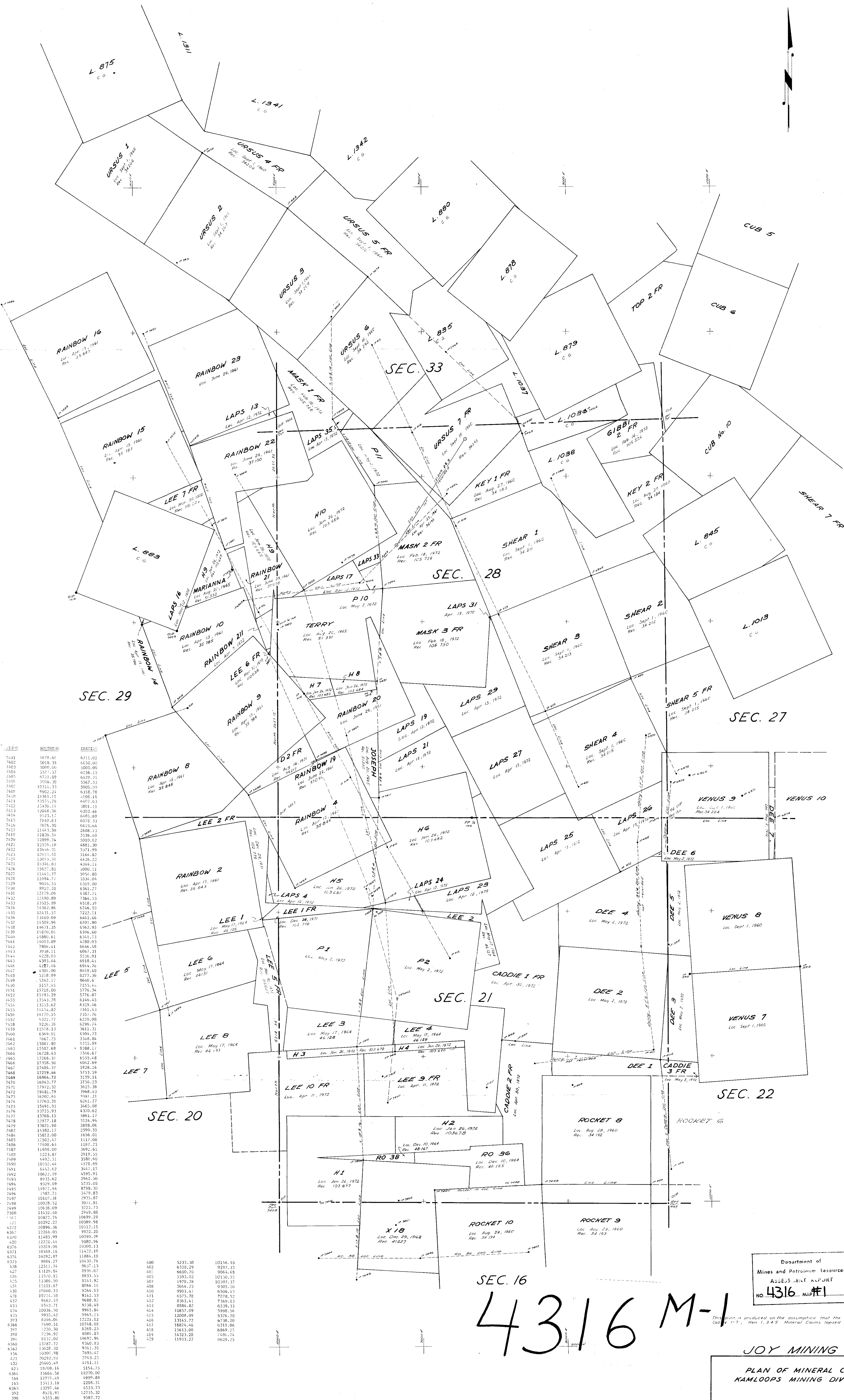
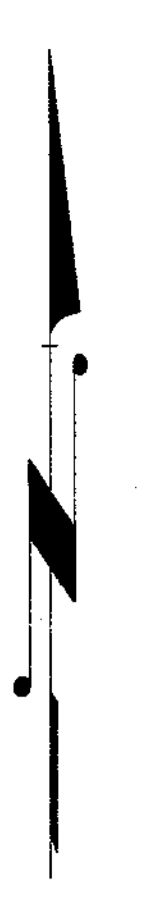
P MINERAL CLAIMS

OWNER: B. KENNELLY

KAMLOOPS MINING DIVISION

WORK DONE: APRIL 19 to MAY 31/72

4316



WESTING	NORTHING	EASTING
7401	4679.66	4711.02
7402	4679.75	4711.00
7403	4679.84	4710.98
7404	4679.93	4710.96
7405	4680.02	4710.94
7406	4680.11	4710.92
7407	4680.20	4710.90
7408	4680.29	4710.88
7409	4680.38	4710.86
7410	4680.47	4710.84
7411	4680.56	4710.82
7412	4680.65	4710.80
7413	4680.74	4710.78
7414	4680.83	4710.76
7415	4680.92	4710.74
7416	4681.01	4710.72
7417	4681.10	4710.70
7418	4681.19	4710.68
7419	4681.28	4710.66
7420	4681.37	4710.64
7421	4681.46	4710.62
7422	4681.55	4710.60
7423	4681.64	4710.58
7424	4681.73	4710.56
7425	4681.82	4710.54
7426	4681.91	4710.52
7427	4682.00	4710.50
7428	4682.09	4710.48
7429	4682.18	4710.46
7430	4682.27	4710.44
7431	4682.36	4710.42
7432	4682.45	4710.40
7433	4682.54	4710.38
7434	4682.63	4710.36
7435	4682.72	4710.34
7436	4682.81	4710.32
7437	4682.90	4710.30
7438	4682.99	4710.28
7439	4683.08	4710.26
7440	4683.17	4710.24
7441	4683.26	4710.22
7442	4683.35	4710.20
7443	4683.44	4710.18
7444	4683.53	4710.16
7445	4683.62	4710.14
7446	4683.71	4710.12
7447	4683.80	4710.10
7448	4683.89	4710.08
7449	4683.98	4710.06
7450	4684.07	4710.04
7451	4684.16	4710.02
7452	4684.25	4709.99
7453	4684.34	4709.97
7454	4684.43	4709.95
7455	4684.52	4709.93
7456	4684.61	4709.91
7457	4684.70	4709.89
7458	4684.79	4709.87
7459	4684.88	4709.85
7460	4684.97	4709.83
7461	4685.06	4709.81
7462	4685.15	4709.79
7463	4685.24	4709.77
7464	4685.33	4709.75
7465	4685.42	4709.73
7466	4685.51	4709.71
7467	4685.60	4709.69
7468	4685.69	4709.67
7469	4685.78	4709.65
7470	4685.87	4709.63
7471	4685.96	4709.61
7472	4686.05	4709.59
7473	4686.14	4709.57
7474	4686.23	4709.55
7475	4686.32	4709.53
7476	4686.41	4709.51
7477	4686.50	4709.49
7478	4686.59	4709.47
7479	4686.68	4709.45
7480	4686.77	4709.43
7481	4686.86	4709.41
7482	4686.95	4709.39
7483	4687.04	4709.37
7484	4687.13	4709.35
7485	4687.22	4709.33
7486	4687.31	4709.31
7487	4687.40	4709.29
7488	4687.49	4709.27
7489	4687.58	4709.25
7490	4687.67	4709.23
7491	4687.76	4709.21
7492	4687.85	4709.19
7493	4687.94	4709.17
7494	4688.03	4709.15
7495	4688.12	4709.13
7496	4688.21	4709.11
7497	4688.30	4709.09
7498	4688.39	4709.07
7499	4688.48	4709.05
7500	4688.57	4709.03
7501	4688.66	4709.01
7502	4688.75	4708.99
7503	4688.84	4708.97
7504	4688.93	4708.95
7505	4689.02	4708.93
7506	4689.11	4708.91
7507	4689.20	4708.89
7508	4689.29	4708.87
7509	4689.38	4708.85
7510	4689.47	4708.83
7511	4689.56	4708.81
7512	4689.65	4708.79
7513	4689.74	4708.77
7514	4689.83	4708.75
7515	4689.92	4708.73
7516	4690.01	4708.71
7517	4690.10	4708.69
7518	4690.19	4708.67
7519	4690.28	4708.65
7520	4690.37	4708.63
7521	4690.46	4708.61
7522	4690.55	4708.59
7523	4690.64	4708.57
7524	4690.73	4708.55
7525	4690.82	4708.53
7526	4690.91	4708.51
7527	4691.00	4708.49
7528	4691.09	4708.47
7529	4691.18	4708.45
7530	4691.27	4708.43
7531	4691.36	4708.41
7532	4691.45	4708.39
7533	4691.54	4708.37
7534	4691.63	4708.35
7535	4691.72	4708.33
7536	4691.81	4708.31
7537	4691.90	4708.29
7538	4691.99	4708.27
7539	4692.08	4708.25
7540	4692.17	4708.23
7541	4692.26	4708.21
7542	4692.35	4708.19
7543	4692.44	4708.17
7544	4692.53	4708.15
7545	4692.62	4708.13
7546	4692.71	4708.11
7547	4692.80	4708.09
7548	4692.89	4708.07
7549	4692.98	4708.05
7550	4693.07	4708.03
7551	4693.16	4708.01
7552	4693.25	4707.99
7553	4693.34	4707.97
7554	4693.43	4707.95
7555	4693.52	4707.93
7556	4693.61	4707.91
7557	4693.70	4707.89
7558	4693.79	4707.87
7559	4693.88	4707.85
7560	4693.97	4707.83
7561	4694.06	4707.81
7562	4694.15	4707.79
7563	4694.24	4707.77
7564	4694.33	4707.75
7565	4694.42	4707.73
7566	4694.51	4707.71
7567	4694.60	4707.69
7568	4694.69	4707.67
7569	4694.78	4707.65
7570	4694.87	4707.63
7571	4694.96	4707.61
7572	4695.05	4707.59
7573	4695.14	4707.57
7574	4695.23	4707.55
7575	4695.32	4707.53
7576	4695.41	4707.51
7577	4695.50	4707.49
7578	4695.59	4707.47
7579	4695.68	4707.45
7580	4695.77	4707.43
7581	4695.86	4707.41
7582	4695.95	4707.39
7583	4696.04	4707.37
7584	4696.13	4707.35
7585	4696.22	4707.33
7586	4696.31	4707.31
7587	4696.40	4707.29
7588	4696.49	4707.27
7589	4696.58	4707.25
7590	4696.67	4707.23
7591	4696.76	4707.21
7592	4696.85	4707.19
7593	4696.94	4707.17
7594	4697.03	4707.15
7595	4697.12	4707.13
7596	4697.21	4707.11
7597	4697.30	4707.09
7598	4697.39	4707.07
7599	4697.48	4707.05
7600	4697.57	4707.03
7601	4697.66	4707.01
7602	4697.75	4706.99
7603	4697.84	4706.97
7604	4697.93	4706.95
7605	4698.02	4706.93
7606	4698.11	4706.91
7607	4698.20	4706.89
7608	4698.29	4706.87
7609	4698.38	4706.85
7610	4698.47	4706.83
7611	4698.56	4706.81
7612	4698.65	4706.79
7613	4698.74	4706.77
7614	4698.83	4706.75
7615	4698.92	4706.73
7616	4699.01	4706.71
7617	4699.10	4706.69
7618	4699.19	4706.67
7619	4699.28	4706.65
7620	4699.37	4706.63
7621	4699.46	4706.61
7622	4699.55	4706.59
7623	4699.64	4706.57
7624	4699.73	4706.55
7625	4699.82	4706.53
7626	4699.91	4706.51
7627	4700.00	4706.49
7628	4700.09	4706.47
7629	4700.18	4706.45
7630	4700.27	4706.43
7631	4700.36	4706.41
7632	4700.45	4706.39
7633	4700.54	4706.37
7634	4700.63	4706.35
7635	4700.72	4706.33
7636	4700.81	4706.31
7637	4700.90	4706.29
7638	4700.99	4706.27
7639	4701.08	4706.25
7640	4701.17	4706.23
7641	4701.26	4706.21
7642	4701.35	4706.19
7643	4701.44	4706.17
7644	4701.53	4706.15
7645	4701.62	4706.13
7646	4701.71	4706.11
7647	4701.80	4706.09
7648	4701.89	4706.07
7649	4701.98	4706.05
7650	4702.07	4706.03
7651	4702.16	4706.01
7652	4702.25	4705.99
7653	4702.34	4705.97
7654	4702.43	4705.95
7655	4702.52	4705.93
7656	4702.61	4705.91
7657	4702.70	4705.89
7658	4702.79	4705.87
7659	4702.88	4705.85
7660	4702.97	4705.83
7661	4703.06	4705.81
7662	4703.15	4705.79
7663	4703.24	4705.77
7664	4703.33	4705.75
7665	4703.42	4705.73
7666	4703.51	4705.71
7667	4703.60	4705.69
7668	4703.69	4705.67
7669	4703.78	4705.65
7670	4703.87	4705.63
7671	4703.96	4705.61
7672	4704.05	4705.59
7673	4704.14	4705.57
7674	4704.23	4705.55
7675	4704.32	4705.53
7676	4704.41	4705.51
7677	4704.50	4705.49
7678	4704.59	4705.47
7679	4704.68	4705.45
7680	4704.77	4705.43
7681	4704.86	4705.41
7682	4704.95	4705.39
7683	4705.04	4705.37
7684	4705.13	4705.35
7685	4705.22	4705.33
7686	4705.31	4705.31
7687	4705.40	4705.29
7688	4705.49	4705.27
7689	4705.58	4705.25
7690	4705.67	4705.23
7691	4705.76	4705.21
7692	4705.85	4705.19
7693	4705.94	4705.17
7694	4706.03	4705.15
7695	4706.12	4705.13
7696	4706.21	4705.11
7697	4706.30	4705.09
7698	4706.39	4705.07
7699	4706.48	4705.05
7700	4706.57	4705.03
7701	4706.66	4705.01
7702	4706.75	4704.99
7703	4706.84	4704.97
7704	4706.93	4704.95
7705	4707.02	4704.93
7706	4707.11	4704.91
7707	4707.20	4704.89
7708	4707.29	4704.87
7709	4707.38	4704.85
7710	4707.47	4704.83
7711	4707.56	4704.81
7712	4707.65	4704.79
7713	4707.74	4704.77
7714	4707.83	4704.75
7715	4707.92	4704.73
7716	4708.01	4704.71
7717	4708.10	4704.69
7718	4708.19	4704.67
7719	4708.28	4704.65
7720	4708.37	4704.63
7721	4708.46	



Department of
 Mines and Petroleum Resources
 ASSESSMENT REPORT
 NO. 4316 MAP #2

JOY MINING LTD.

PLAN OF MINERAL CLAIMS
 KAMLOOPS MINING DIVISION

NOTES

This plan shows the areas allocated to the H 1-10, P 1 & 11, Dee 4 & 5, Laps 13, 16, 19, 21, 23, 25, 26, 27, 29, 31, 35 Mineral Claims, with the 'X' claims holding their property.
 The boundaries on this plan are based on a location line survey and are not to be construed as the final legal boundaries.

SCALE: 1 INCH = 400 FEET DATE: JULY 4, 1972 DWG: MS
 UNDERHILL & UNDERHILL
 PROFESSIONAL ENGINEERS & B.C. LAND SURVEYORS

Underhill B.C.L.S. DRAWING NUMBER
 1382-9