

4334

D. W. T. HOLDINGS LTD
SUITE 102 - 222 BELLEVUE AVENUE
WEST VANCOUVER, B.C.

921/7E

REPORT ON A

MAGNETOMETER SURVEY
OVER PART OF THE

MAX CLAIM GROUP 1-20
LAC LE JEUNE AREA
KAMLOOPS MINING DIVISION
KAMLOOPS, BRITISH COLUMBIA

50-30 N. LAT.

120-30 N. LONG.

Department of

Mines and Petroleum Resources

Annual Report

FOR

NO. 4334 MAP

HOST VENTURES LTD.
534-789 WEST PENDER STREET
VANCOUVER, B.C.

BY



DONALD W. TULLY, P.ENG.

APRIL 13, 1973

WEST VANCOUVER, B.C.

D. I. T. HOLDINGS LTD.

SUITE 102 · 2222 BELLEVUE AVENUE
WEST VANCOUVER, B. C.

TABLE OF CONTENTS

	<u>Page</u>
SUMMARY AND CONCLUSIONS.....	1
INTRODUCTION.....	1
PROPERTY LOCATION, ACCESS, TOPOGRAPHY.....	1
CLAIMS.....	2
PREVIOUS DEVELOPMENT - REFERENCES.....	3
GENERAL GEOLOGY.....	3
MAGNETOMETER SURVEY RESULTS.....	4
MINERALIZATION.....	5
RECOMMENDATIONS.....	5
CERTIFICATE.....	6

MAPS

#1 PROPERTY LOCATION MAP.....	Frontispiece
#2 AREA PROPERTY MAP.....	Following Page 1
#3 CLAIM MAP.....	Following Page 2
#4 MAGNETOMETER SURVEY PLAN (1"=400').....	In Pocket

APPENDIX A

Report on Magnetometer Survey on Max 1-20 Mineral Claims, Lac
Le Jeune Area, Kamloops Mining Division, for Host Ventures Ltd.,
by Strato Geological Ltd.

LOCATION MAP

SCALE: 1" = 30 Miles

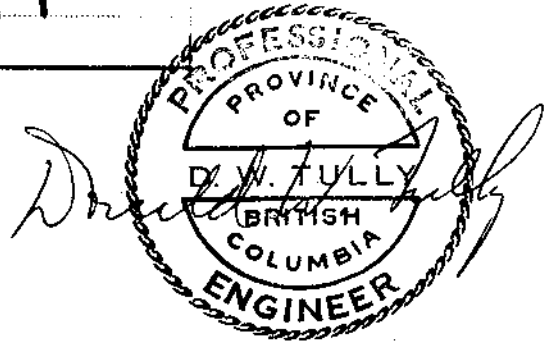
Department of
Mines and Geoscience Resources

ASST. REGISTRAR GENERAL

NO. **4334** MAP #1



WILLIAMS LAKE



HOST VENTURES LTD. (N.P.L.)

MAX CLAIM GROUP

1-20

REVELSTOKE

ASHCROFT

Highland
Valley



AFTON
LEEMAC

MERRITT

VANCOUVER

HOPE

PRINCETON

PENTICTON

BRITISH COLUMBIA
WASHINGTON U.S.A.

OSOYOOS

D. I. T. HOLDINGS LTD.

SUITE 102 - 2222 BELLEVUE AVENUE
WEST VANCOUVER, B. C.

SUMMARY AND CONCLUSIONS

A magnetometer survey over eighteen claims of the Max group #1-20 has indicated several anomalous magnetic zones. Of interest is a large north-south trending magnetic low on Max claims #6 and #8 and a second anomalous area on Max claims #3 and #4. Further magnetometer surveying is warranted to detail the outline of these indicated anomalies.

INTRODUCTION

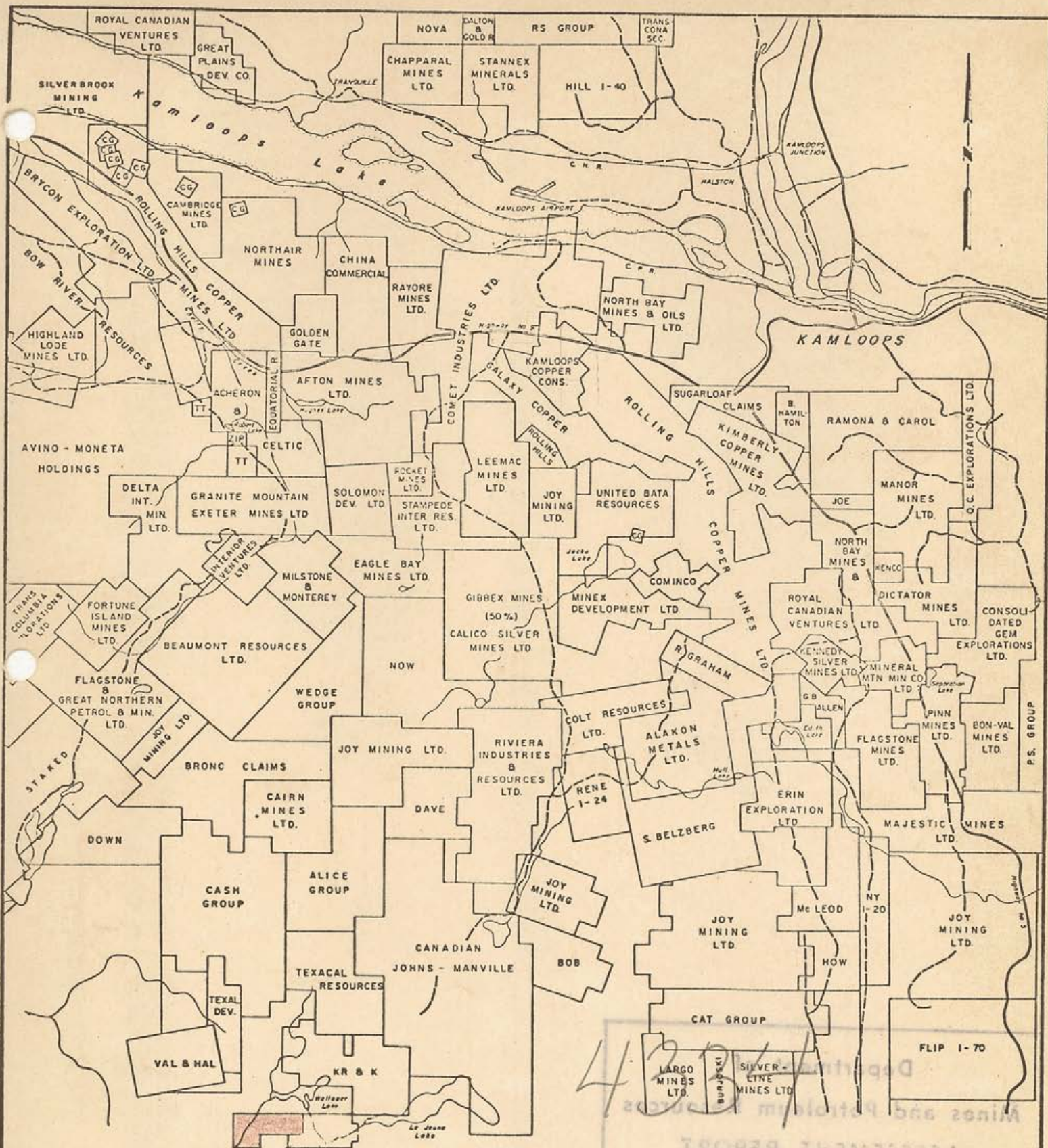
A study of the magnetometer work performed over a portion of the Max claims by Strato Geological Ltd. was done pursuant to a request by Mr. S. Belsberg.

PROPERTY LOCATION, ACCESS, TOPOGRAPHY

The property is located about 20 miles south of Kamloops near Lac Le Jeune. The claims are situated about a mile south of Walloper Lake astride the Kamloops - Logan Lake road in Township 17, Range 19, West 6. Surface Lot 27 lies over part of the eastern end of the claim group.

Elevations vary between 4000 and 4300 feet above sea-level over gently undulating slopes covered with spruce, pine and aspen forest growth. There is evidence of a rather recent forest fire.

Melba Creek flows northeastward through the claim group to Walloper Lake.



PROPERTY MAP

KAMLOOPS AREA

NOTE:

COMPILED FROM INFORMATION BELIEVED TO BE
 RELIABLE BUT INDIVIDUAL OWNERSHIP AND EXACT
 LOCATIONS ARE NOT CERTIFIED.
 APRIL 1972

FEET 0 1000 2000 3000 4000 5000 6000 7000 8000 9000 10000

D. I. T. HOLDINGS LTD.

SUITE 102 - 2222 BELLEVUE AVENUE
WEST VANCOUVER, B.C.

CLAIMS

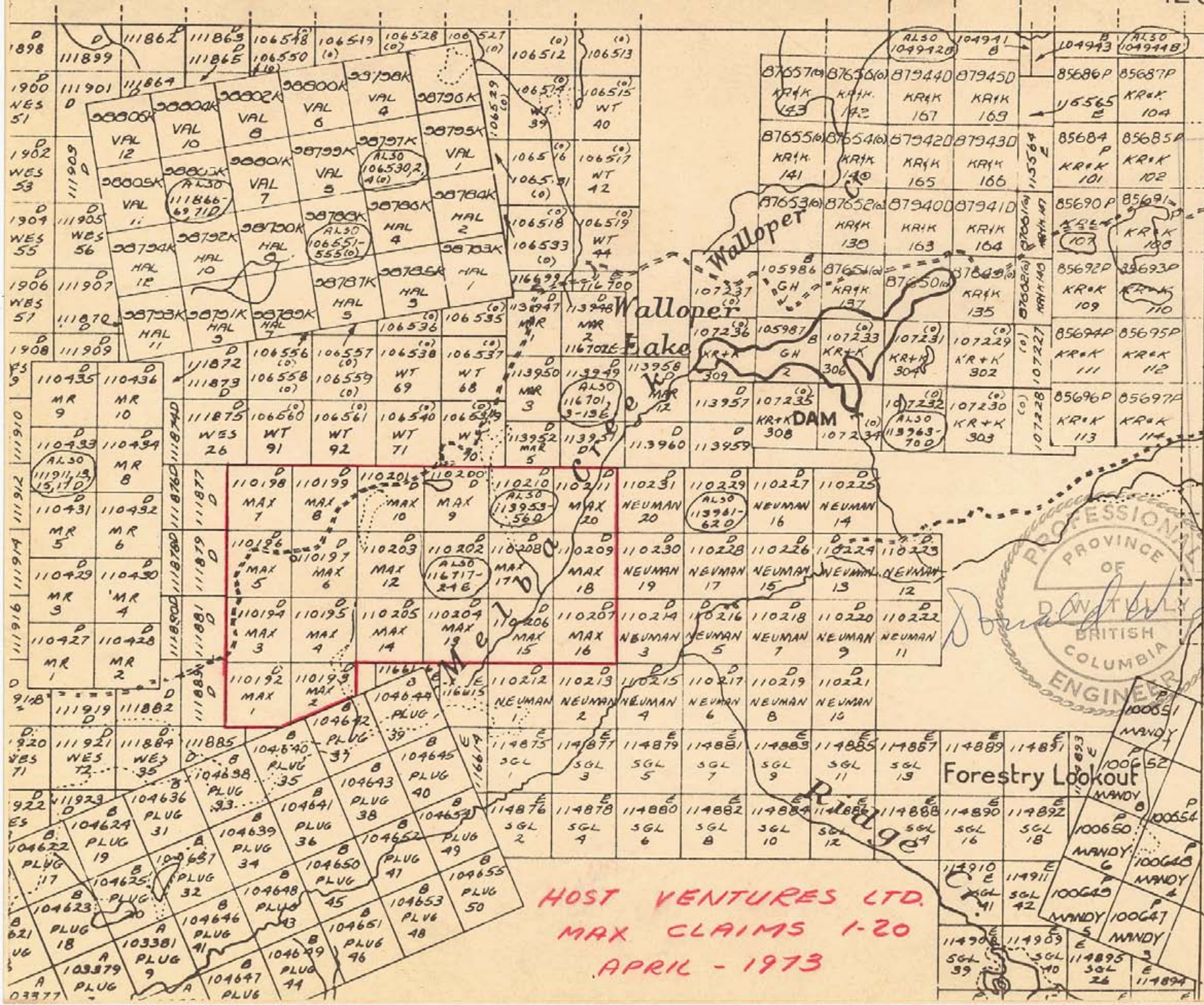
<u>Claim Name</u>	<u>Record #</u>	<u>Expiry Date</u>
Max # 1	110192 D	April 14, 1973
# 2	3	"
# 3	4	"
# 4	5	"
# 5	6	"
# 6	7	"
# 7	8	"
# 8	9	"
# 9	110200	"
#10	1	"
#11	2	"
#12	3	"
#13	4	"
#14	5	"
#15	6	"
#16	7	"
#17	8	"
#18	9	"
#19	110210	"
#20	1 D	"

Assessment work was reported by U. Leis as filed on April 13, 1973 on the Max claims as follows:

Max # 1- 5	=	1	year	assessment	credit	each
Max # 6	=	3	"	"	"	
Max # 7	=	1	"	"	"	
Max # 8	=	3	"	"	"	
Max # 9-10	=	1	"	"	"	"
Max # 11	=	3	"	"	"	
Max #12-20	=	1	"	"	"	"

120° 30'

50° 30'



Department of
 Mines and Petroleum Resources
 ASSESSMENT REPORT
 NO. 4334 MAP #3



HOST VENTURES LTD.
 MAX CLAIMS 1-20
 APRIL - 1973

Forestry Lookout

Mandy

D. I. T. HOLDINGS LTD.

SUITE 102 - 2222 BELLEVUE AVENUE
WEST VANCOUVER, B.C.

PREVIOUS DEVELOPMENT - REFERENCES

A search of the ground over the claim group showed evidence of previous staking.

The following records are useful references:

1. G.S.C. Map 886A
2. G.S.C. Geophysics Paper 5212G
3. B.C. Department of Mines Claim Map 92-I/7E
4. Report on the Max Claims 1-20 by Donald W. Tully, P.Eng., dated April 24, 1972.

The Afton Mines area some 15 miles north of this claim group was the scene of intense exploration activity in 1972.

GENERAL GEOLOGY

Sand, gravel and fluvioglacial overburden covers most of the claim group. Rock outcrops are scarce.

Coarse-grained diorite-like Nicola volcanics were noted on Max claim #20.

The Guichon batholith (Edith Hill phase) outcrops a short distance east of the claim group. The trend of this contact is northeast. Geophysics Paper 5212G shows a corresponding magnetic trend in this general area.

*No!
It is the
Central
Nicola
Batholith*

D. I. T. HOLDINGS LTD.

SUITE 102 · 2222 BELLEVUE AVENUE
WEST VANCOUVER, B. C.

MAGNETOMETER SURVEY RESULTS

The magnetometer survey was performed by Strato Geological Ltd. under the direction of this writer during the period March 27th to April 7th, 1973 over Max claims 3-20. The survey, instrument and method of ground control are described by Mr. U. Leis in Appendix A at the end of this report.

Chain and compass-oriented, flagged control lines were laid out at 800 foot intervals in a north-south direction from an east-west base line.

The results are plotted and contoured at 200 gamma intervals as shown on the accompanying plan on scale 1" = 400'.

Total magnetic relief is 3080 gammas.

A magnetic low area occurs on L 26+00 E on Max claims #6 and #8. The dimensions are roughly ½ mile by 500 feet. The long axis is north-south and there is a suggestion this anomaly trends into Max claims #3 and #4 to the south and west. This anomaly is interpreted to be a possible north-south trending zone of hydrothermal or hypothermal alteration often associated with porphyry copper deposits. There are other explanations also.

Local anomalous zones of higher magnetic intensity were found on Max claims #11,12,13,19 and 20. The trend of the higher magnetic intensity zones is east-west and transverse to the magnetic low on Max #6 and #8. Outcrops of Nicola volcanics

D. I. T. HOLDINGS LTD.

SUITE 102 - 2222 BELLEVUE AVENUE
WEST VANCOUVER, B.C.

are known in the area of the higher intensity anomalies.

Detailed magnetometer surveying on scale 1" = 200' would better delineate these anomalous areas. This should be accompanied by geological mapping and geochemical soil sampling.

MINERALIZATION

No economic mineralization is known on the claim group at the present time.


RECOMMENDATIONS

It is recommended that further magnetometer surveying be done on the Max claims 1-20 on scale 1" = 200' to detail the indicated anomalous areas and search for other target areas.

Geological mapping is proposed to detail the geologic structure.

Geochemical soil sampling is proposed to check out the magnetically anomalous areas.

April 13, 1973

Respectfully,

Donald W. Tuley, Eng.

D. I. T. HOLDINGS LTD.

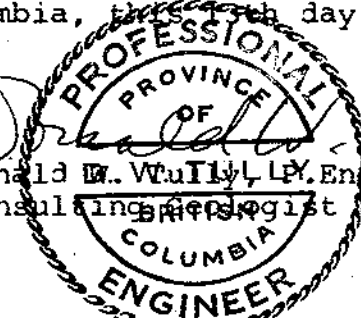
SUITE 102 · 2222 BELLEVUE AVENUE
WEST VANCOUVER, B. C.

CERTIFICATE

I, DONALD WILLIAM TULLY, of the Municipality of West Vancouver, Province of British Columbia, hereby certify as follows:

1. I am a Consulting Geologist with an office at Suite 102, 2222 Bellevue Avenue, West Vancouver, British Columbia.
2. I am a registered professional engineer in the Provinces of British Columbia and Ontario.
3. I graduated with a degree of Bachelor of Science, Honours Geology, from McGill University in 1943.
4. I have practiced my profession for twenty-eight years.
5. I have no direct, indirect or contingent interest in the Max claims or shares of Host Ventures Ltd. nor do I intend to receive any interest.
6. This report dated April 13, 1973 is based on a study of the magnetometer readings and an examination of the ground control in the field on April 6, 1973.

DATED at West Vancouver, British Columbia, the ~~thirteenth~~ day of April, 1973.


Donald W. Tully, P. Eng.
Consulting Geologist
PROFESSIONAL
OF
COLUMBIA
ENGINEER

Report on

Magnetometer Survey

by

STRATO GEOLOGICAL LTD.

on the

MAX 1-20 Mineral Claims

Lac Le Jeune Area

Kamloops Mining Division

for

Host Ventures Ltd. (NPL)

534-789 West Pender St.

Vancouver, British Columbia.

April 12, 1973.

MINERAL EXPLORERS

1. Summary and Conclusions:

At the request of Host Ventures Ltd. (N.P.L.) , a grid was established on the Max 1-20 mineral claims in the Lac Le Jeune area , in the Kamloops Mining Division. A baseline was established in an easterly bearing , with tie-lines at 800 foot intervals extending 2200 feet perpendicular from the baseline. A Sabre Flux-gate Magnetometer was used for the magnetometer survey with readings taken at 100 foot intervals , with diurnal checks taken at approximately 1 hour intervals. The results of the survey are compiled on the enclosed map, with readings in gammas. Approximately 14 miles of survey was carried out.

2. Introduction:

Host Ventures Ltd. (N.P.L.) requested Strato Geological Ltd. to carry out a preliminary exploration survey of the Max 1-20 mineral claims , located near Lac Le Jeune in the Kamloops Mining Division. Previous work in the area by Strato Geological Ltd. indicated that there was a generally poor response from geochemical surveys in that region, so it was decided that a magnetometer survey might provide more meaningful data. This property is a copper prospect.

3. Work Performed:

A total of approximately 14 miles of grid was laid out and surveyed by Sabre Fluxgate Magnetometer. Initially the baseline was surveyed with the instrument , and the readings were taken at 100 foot intervals. These readings were corrected for diurnal fluctuation and the baseline stations were used for check readings when the tie-lines were surveyed , for diurnal fluctuation.

The duration of the program was from March 27, 1973 to April 7, 1973. Personnell on the survey included Uno Leis (Manager) and Edward Thorburn (Operations Manager) of Strato Geological Ltd.

The instrument used on the survey was a Sabre Fluxgate Magnetometer. This instrument is a self - levelling unit with a digital read-out . Conversion of the data to gammas is by multiplication by a factor of 40. Readability of the unit is approximately 20 gammas.

The grid was established in the center of the claim group running due east. Stations were marked at 100 foot intervals and tielines were extended north and south for 2200 feet each. All stations were clearly identified , and the grid lines were thoroughly marked.

4. This report is prepared from the results of the survey carried out on the Max 1-20 mineral claims near Lac Le Jeune in the Kamloops Mining Division. I was personally present when this survey was carried out and the report is based on personal observation and an examination of the data obtained from the survey.

Uno Leis

per STRATO GEOLOGICAL LTD.
Uno Leis - Director

APPENDIX A



STRATO GEOLOGICAL LTD.
MINERAL EXPLORATION CONTRACTORS
19 - 448 SEYMOUR STREET
VANCOUVER 2, BRITISH COLUMBIA, CANADA

TELEPHONE 688-3141

April 10, 1973

In account with: Host Ventures Ltd. (N.P.L.)
534-789 W. Pender St.
Vancouver, B.C.

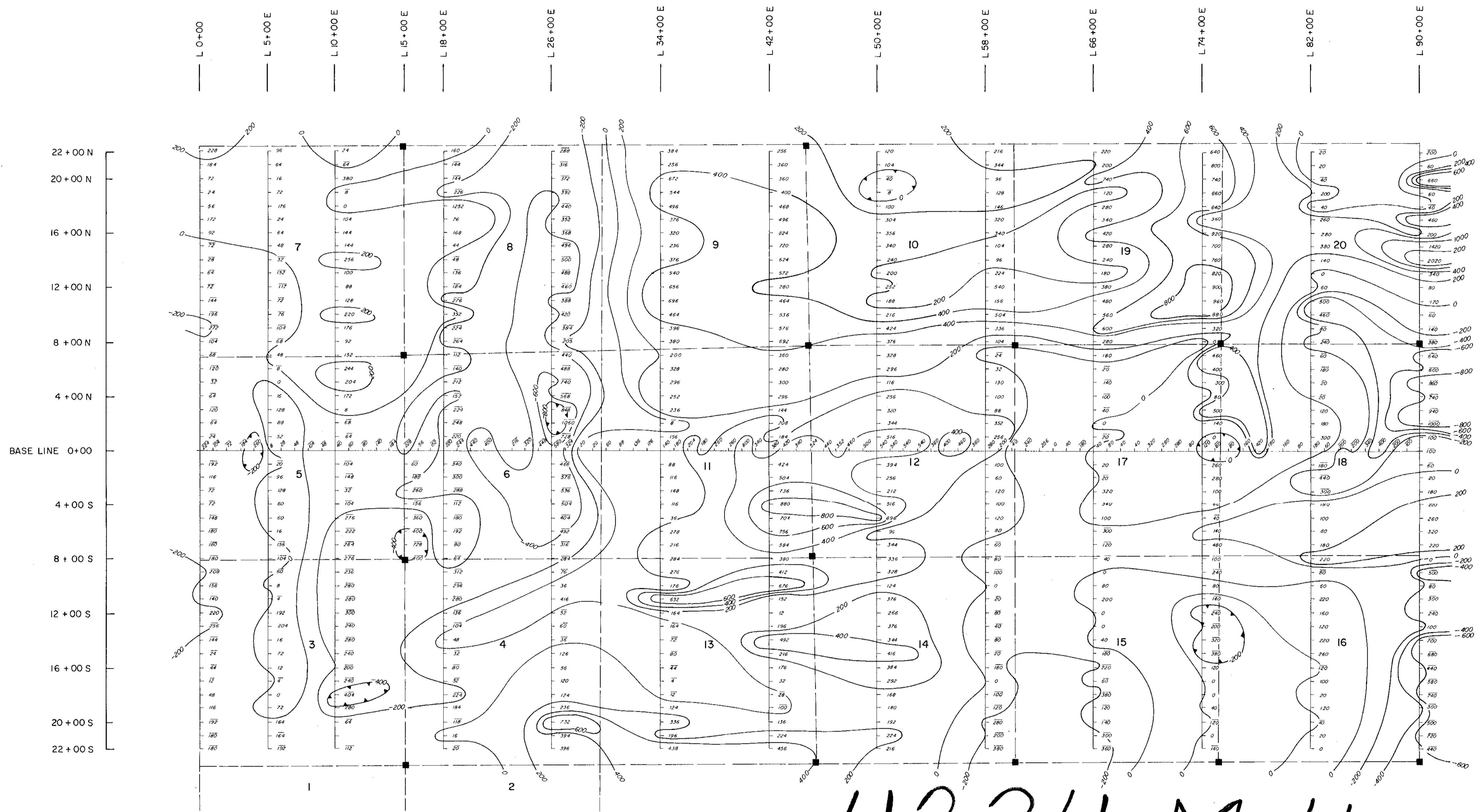
R.e.: Grid layout and magnetometer survey on the
Max 1-20 Mineral Claims, situate near
Lac Le Jeune, Kamloops Mining Division.

Grid Layout.	- 1120.
Magnetometer	- 910.
Transportation	- 360.
Room & Board	- 200.
Assimilation of data	<u>- 100.</u>
TOTAL ACCOUNT RECEIVABLE	\$2690.

Declared before me at the *City*
of *Vancouver* in the
Province of British Columbia, this *13th*
day of *April* 1973, A.D. } *U. Lewis*

U. Lewis
A Commissioner for the Province of British Columbia
A Notary Public in and for the Province of British Columbia

SWORN AND RECORDED



4334 M-4

KEY PLAN

7	8	9	10	19	20
5	6	11	12	17	18
3	4	13	14	15	16
1	2				

MAX CLAIMS

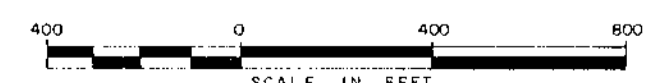
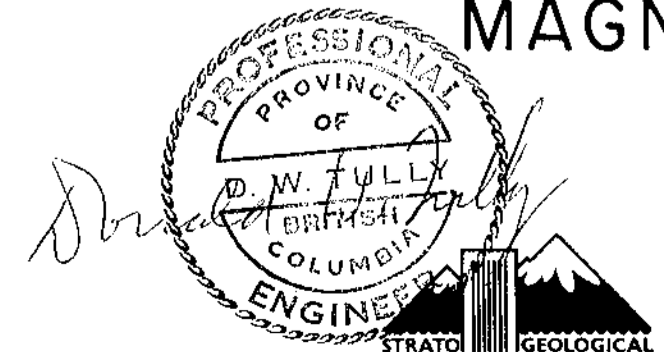
LEGEND

- DEPRESSION CONTOUR
- CONTOUR INTERVAL = 200 GAMMAS
- ROAD
- STREAM
- CLAIMLINE, CLAIMPOST

MAKE & MODEL OF INSTRUMENT USED: SABRE FLUXGATE

Department of
Mines and Petroleum Resources
HOST VENTURES LTD. STATEMENT REPORT
MAX CLAIMS NO. 4334 MAP #4
LAC LE JEUNE AREA, KAMLOOPS M.D.
BRITISH COLUMBIA

MAGNETOMETER SURVEY



APRIL 1973

SURVEY BY STRATO GEOLOGICAL LTD.