

4359

REPORT ON A GEOCHEMICAL SURVEY

ON THE

SAN JUAN PROPERTY

OF

PERBELL MINES LTD. (NPL)

5TH JUNE, 1973

VANCOUVER, B.C.

Department of Mines and Technical Resources ASSESSMENT REPORT NO. <u>4359</u> R.O.P. _____

TABLE OF CONTENTS

	Page
1-00 INTRODUCTION	1
2-00 GENERAL	1
3-00 PROPERTY	2
4-00 GEOLOGY	2
5-00 MAGNETOMETER SURVEY	2
6-00 GEOCHEMICAL SURVEY	3
6-1 FIELD PROCEDURE	3
6-2 GEOCHEMICAL TESTING	3
6-3 INTERPRETATION	3
7-00 CONCLUSION	4
CERTIFICATION	5

MAPS

#1 Location and Claim Map	1" = 110 miles
#2 Magnetometer maps	1" = 548 feet
#3 Geochemical	

REPORT ON A GEOCHEMICAL SURVEY
ON THE
SAN JUAN PROPERTY
OF
PERBELL MINES LTD. (NPL)

1-00 INTRODUCTION:

The San Juan Property of Perbell Mines Ltd. (NPL) consists of 38 mineral claims located immediately north of the head of Port San Juan.

Work during the past consisted of prospecting, a limited amount of soil sampling and a magnetometer survey.

During April 1973, the company conducted a geochemical survey over a portion of the claim group. All work was carried out by Perbell Mines Ltd. The writer was asked to review all available data and to assess and report on the results of this survey.

This report is based on sample results submitted by Mr. T. Dyakowski.

2-00 GENERAL:

The property lies immediately north of the head of Port San Juan, 3 miles north of the head of Port Renfrew and is accessible by various logging roads. Co-ordinates are $124^{\circ}25'W$, $48^{\circ}35'N$.

Topographic relief is low to moderate, elevation ranging from sea level to 2,000 ft. above sea level. The region is heavily forested and logging operations have been conducted in parts of the claims area.

3-00 PROPERTY:

The property consists of the following claims:

<u>Name</u>	<u>Record No.</u>
Sue 1 - 6	16475 - 16480
Sue 11 - 13	16485 - 16487
Ed 6	16619
Caty 2 - 8	16394 - 16400
Caty 11 - 24	16403 - 16416
Val 1 - 14	16432 - 16445

4-00 GEOLOGY:

Reconnaissance geological mapping by the Geological Survey of Canada at a scale of 1 inch = 8 miles, referred to as Geological Sketch Map of Vancouver Island by J.E. Muller, 1967, shows that the claim area is underlain by Middle Pennsylvanian clastic sediments in the south, in fault contact with units of the Island Intrusions of Middle Jurassic age in the north and older metamorphosed rocks in the western section. These latter have been mapped as gneiss, migmatite and metadiorite.

Chalcopyrite, pyrite and pyrrhotite have been noted as scattered grains or traces within the shales or close to the contact between a tuffaceous andesite and the former.

The property has not been geologically mapped in detail.

5-00 MAGNETOMETER SURVEY:

A magnetometer survey, using a G 110 Fluxgate magnetometer, has been conducted by Perbell Mines Ltd. during July - August 1971, on the claim group.

The results could not be evaluated because of lack of geological and topographical data.

6-00 GEOCHEMICAL SURVEY:

6-1 FIELD PROCEDURE:

The soil sampling program was executed by employees of Perbell Mines Ltd. Samples were taken along lines 400 ft. apart at 200 ft. stations. Care was taken to obtain samples from the B horizon. Samples were packaged in kraft envelopes and shipped for testing. A total of 303 samples were taken.

6-2 GEOCHEMICAL TESTING:

All samples were shipped to Core Laboratories to be analysed for copper. These samples were screened to 80 mesh, digested in nitric acid and tested by the atomic absorption method. All values were noted as parts per million.

6-3 INTERPRETATION:

The background value for copper was established by statistical analysis. The copper values were grouped at 10 parts per million (ppm) intervals, the percent frequency and accumulated percent frequency were calculated and plotted on arithmetic probability paper. From the plotted data range of background, mixed zone and anomalous zone was read.

Background	up to and including 32 ppm Cu	37.08% of samples
Mixed zone	32 ppm to 60 ppm Cu	43.56% of samples
Anomalous	above 60 ppm Cu	20.00% of samples

The frequency distribution graph shows two poorly developed breaks, but the absence of detailed geological information the presence of low values of copper associated with shales and tuffaceous andesites does not allow proper interpretation without detail geological knowledge.

7-00 CONCLUSION:

The geochemical survey results are inconclusive, any attempt to interpret the results will have to wait until geological mapping has been completed on the property.

Submitted by:



F. Holcapek,
Geologist.

5th June, 1973

Vancouver, B.C.

CERTIFICATION

I, Ferdinand Holcapek of 107 - 325 Howe Street, Vancouver 1, British Columbia, do hereby certify that:

1. I am a graduate of the University of British Columbia, Vancouver, British Columbia, with a B.Sc. degree in Geology, 1969.
2. From 1961 to 1969 I have been employed in mining exploration in British Columbia and the Yukon as assistant to the exploration geologist. Since graduation I have been engaged in mining exploration in British Columbia, the Yukon and South Australia.
3. I am an Associated Member of the Society for Exploration Geophysicists, the Canadian Institute of Mining and Metallurgy, The Geological Association of Canada and the Geological Society of Australia.
4. I am classified as an Engineer in Training by the Association of Professional Engineers of British Columbia.
5. I have not visited the San Juan Property of Perbell Mines Ltd. (NPL) and all data treated in the report has been received from Mr. T. Dyakowski.
6. I have not received, nor do I expect to receive, any interest in the properties or securities of Perbell Mines Ltd. (NPL).

signed:



Ferdinand Holcapek,
Geologist.

5th June, 1973.

Vancouver, B.C.

DOMINION OF CANADA: }
PROVINCE OF BRITISH COLUMBIA. }
To Wit:

In the Matter of

I, **Dr S.Dyakowski**

of **4190 Balaclava St, Vancouver 8, B.C**

in the Province of British Columbia, do solemnly declare that **the following expenses**
were incurred during the geophysical survey made on the property
of Perbell Mines, N.P.L, at Port Renfrew, Vancouver Island in April
1973.

Payments made to:

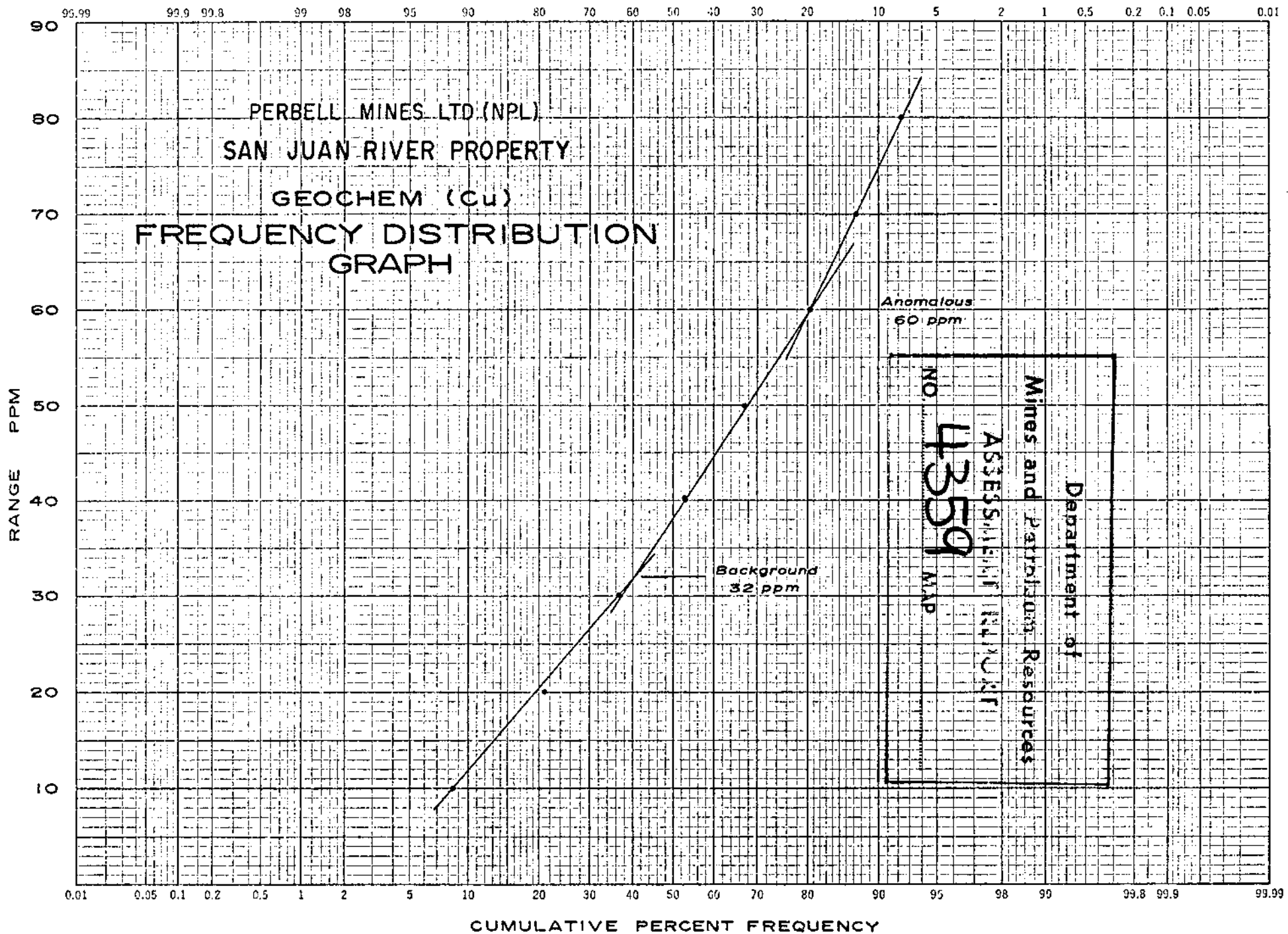
Marcel DesRoches	\$35 per day	\$420
A.S.Dyakowski	\$43 per day	\$516
Minister of Finance		\$ 50 -
Core Laboratories		\$323.38
Transportation + gas		\$140
Food + lodging		\$135
Equipment + Materials		\$295
Draughting		\$130
Stationary		\$ 3.62
	Total	\$2013.00

And I make this solemn declaration conscientiously believing it to be true, and knowing that it is of
the same force and effect as if made under oath and by virtue of the "Canada Evidence Act."

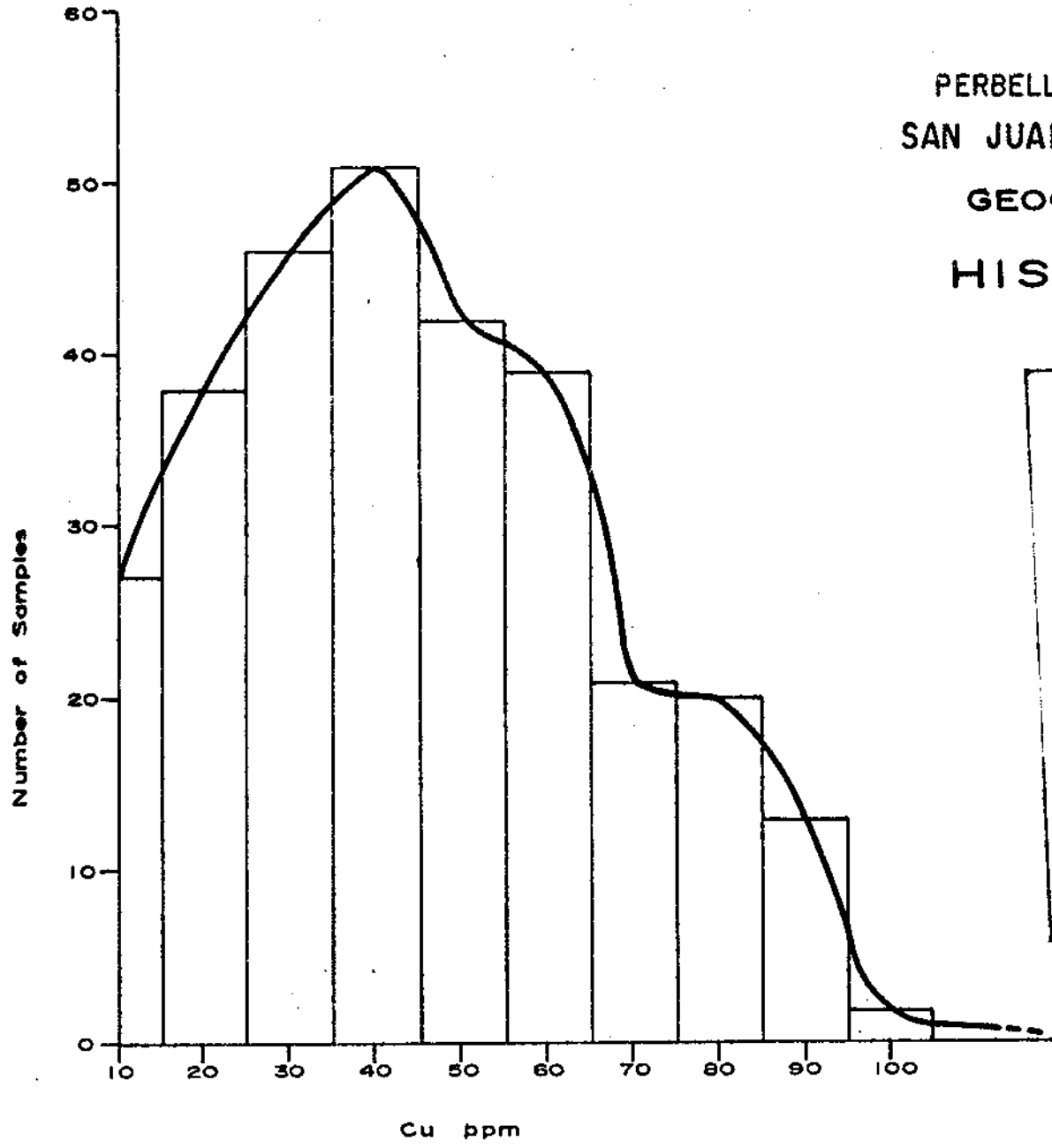
Declared before me at the *City*
of *Vancouver*, in the
Province of British Columbia, this *4th*
day of *June*, 1973, A.D.

John P. ...

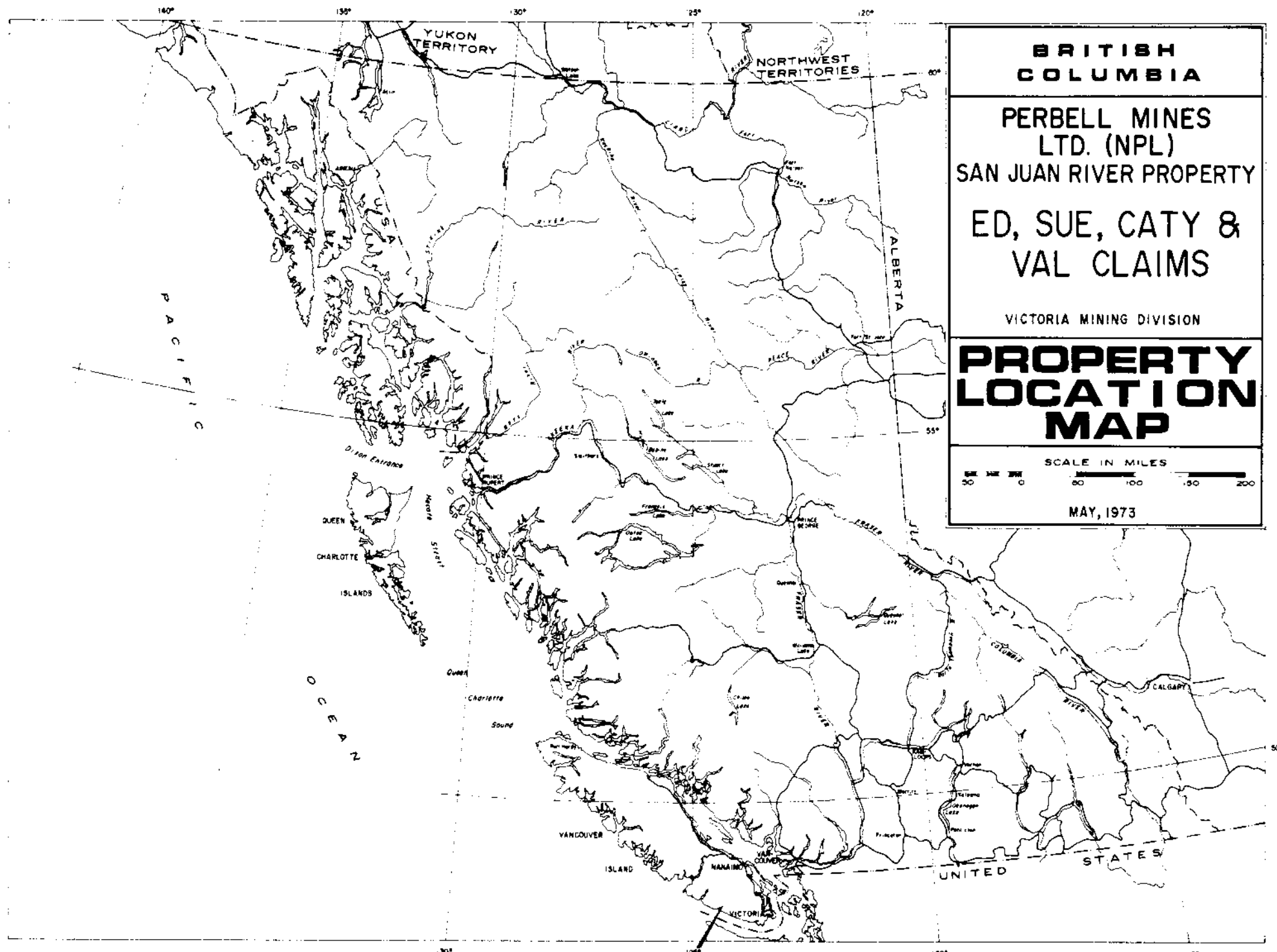
John P. ... SUB-MINING RECORDER
A Commissioner for taking Affidavits for British Columbia or
A Notary Public in and for the Province of British Columbia.



PERBELL MINES LTD (NPL)
SAN JUAN RIVER PROPERTY
GEOCHEM (Cu)
HISTOGRAM



Department of
Mines and Metallurgical Resources
ASSESSMENT AND RESEARCH
NO. 4359
M.R.P.



**BRITISH
COLUMBIA**

**PERBELL MINES
LTD. (NPL)**
SAN JUAN RIVER PROPERTY

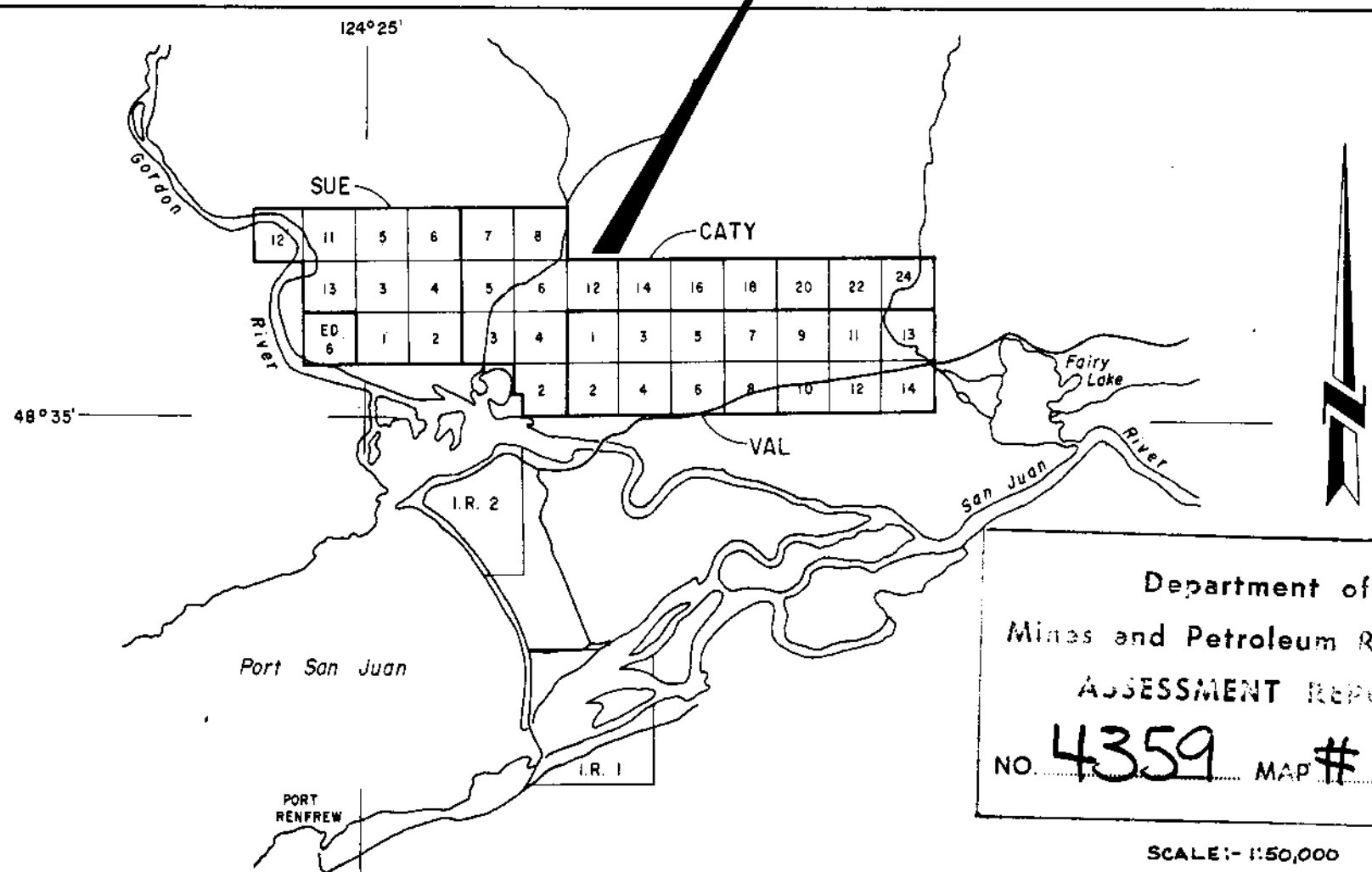
**ED, SUE, CATY &
VAL CLAIMS**

VICTORIA MINING DIVISION

**PROPERTY
LOCATION
MAP**

SCALE IN MILES
0 50 100 150 200

MAY, 1973

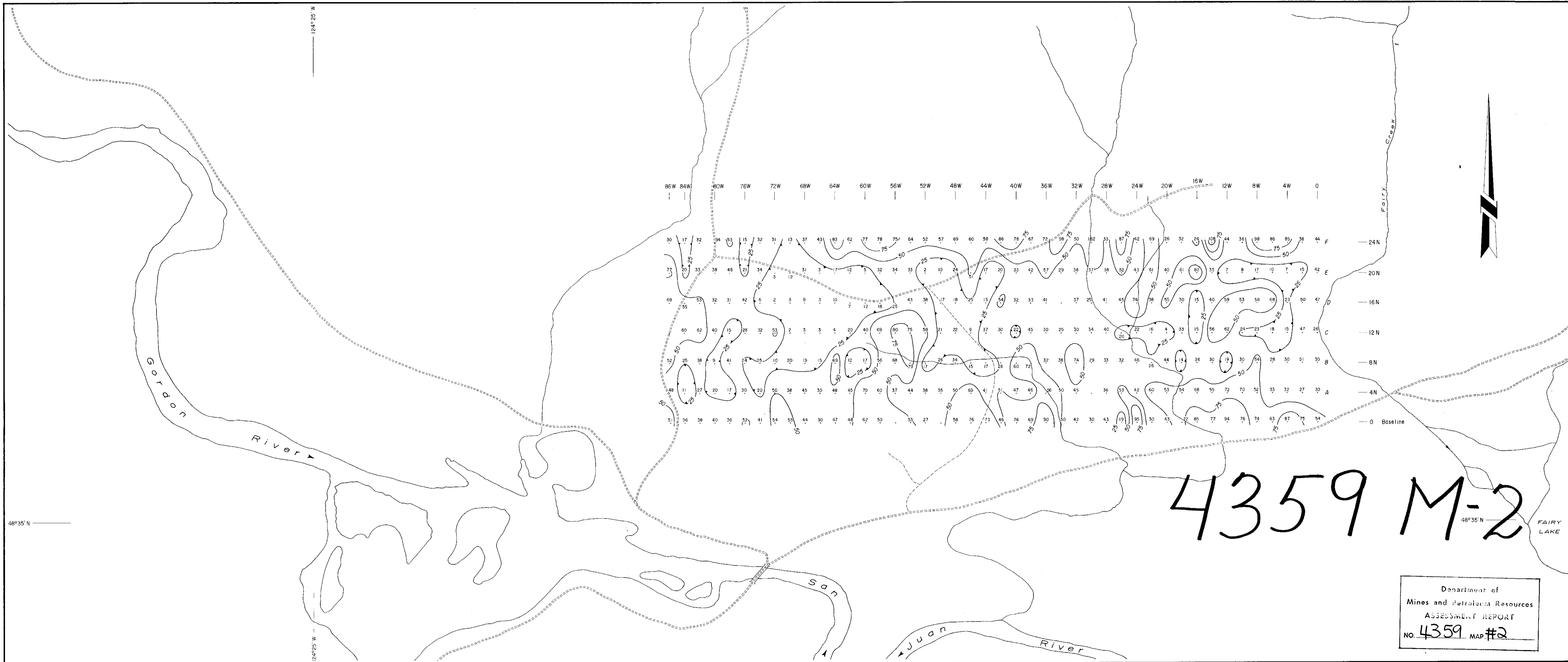


SUE												CATY											
12	11	5	6	7	8																		
13	3	4	5	6	12	14	16	18	20	22	24												
ED	6	1	2	3	4	1	3	5	7	9	11	13											
						2	2	4	6	8	10	12	14										
VAL																							

Department of
Mines and Petroleum Resources
ASSESSMENT REPORT

NO. **4359** MAP # **1**

SCALE: - 1:50,000



Department of
Mines and Petroleum Resources
ASSESSMENT REPORT
NO. 4359 MAP #2

PERBELL MINES LTD. (NPL)
SAN JUAN RIVER PROPERTY
VICTORIA MINING DIVISION, B.C.

GEOCHEMICAL SURVEY 90%
COPPER PPM

CONTOUR INTERVAL: 25 ppm SURVEY BY: T. DYAKOWSKI

SCALE IN FEET
0 500 1000 2000

AGILIS ENGINEERING LTD. MAY, 1973