

4380

PHELPS DODGE CORPORATION OF CANADA, LIMITED

SUMMARY GEOLOGICAL, GEOCHEMICAL
AND GEOPHYSICAL REPORT

on *Tas, Tat*

TAS Group of Claims

12 miles south-southeast of Princeton, B.C.

June 13, 1973. *92H/8W*

by

A. Morris, P.Eng.

Department of
Mines and Petroleum Resources
ASSESSMENT REPORT

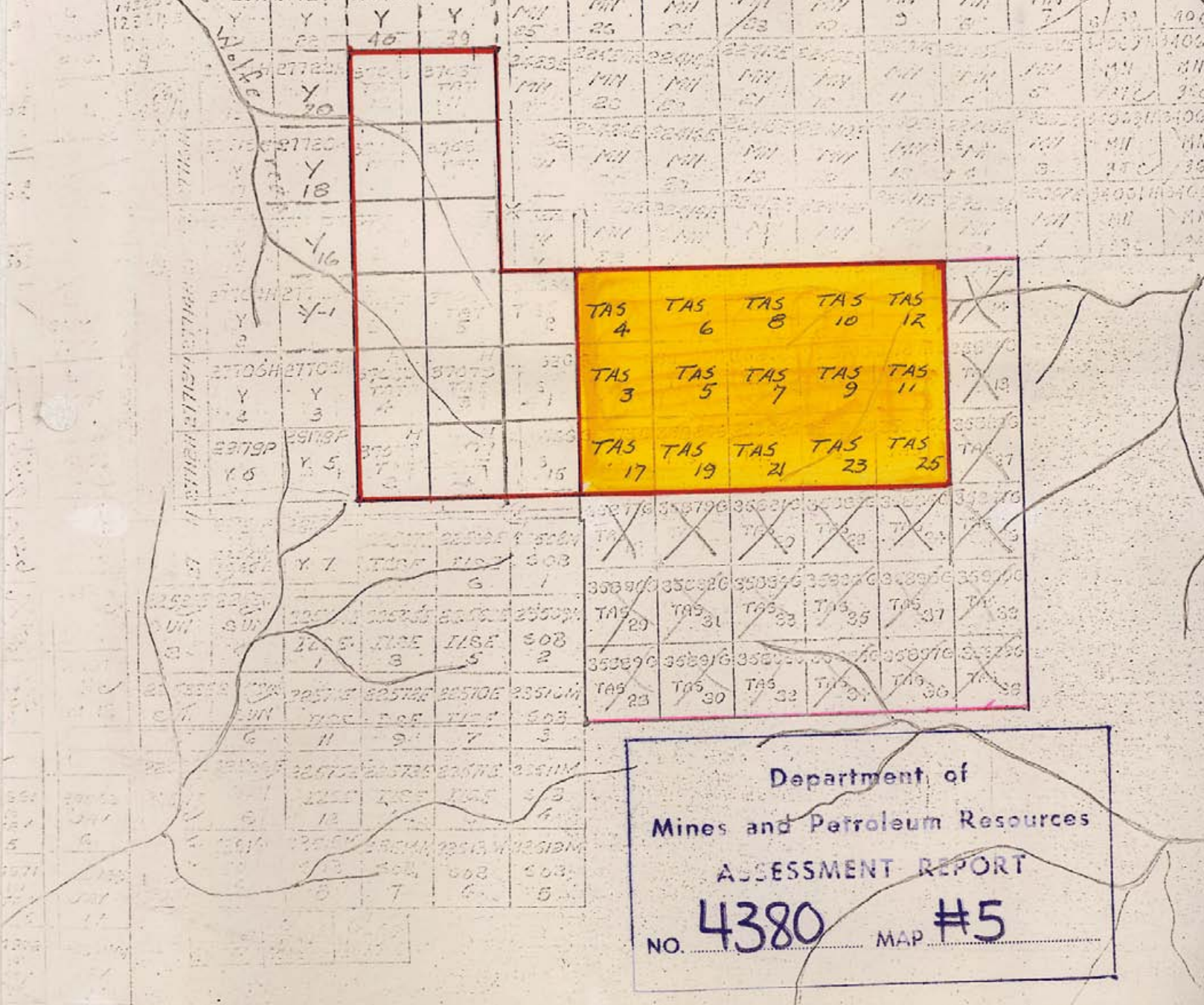
NO. **4380** MAP.....

CONTENTS

	<u>Page</u>
Introduction	1
Location and Access	1
Claims	1
Geology	1
Geochemical Survey	2
Geophysical Survey	2
Recommendations	2

Maps:

- #1 Geology - TAS Group of Claims
- #2 Geochemical Survey - TAS Group of Claims
- #3 Magnetometer Survey - TAS Group of Claims
- #4 Location Map - TAS Group of Claims
- #5 Claim map



Department of
 Mines and Petroleum Resources
 ASSESSMENT REPORT
 NO. **4380** MAP **#5**

120° 30'

SIMILKAMEEN MINING DIVISION

49° 15'

Introduction:

During the summer of 1972 Mr. A. Bischoff, a staff geologist, spent about 2.5 months in the Princeton area (a) staking 39 TAS claims and 12 TAP claims (b) carrying out geochemical (soil), geophysical (magnetometer) surveys, and mapping geology. *Dates - June 15, 1971 to July 31, 1972*

Mr. A. Bischoff's crew which varied from one to three assistants, included T. Edwards, A. Gregson, and S. Lui.

Location and Access:

The area is centered approximately 12 miles south-southeast of Princeton, B.C., between headwater drainages of Wolfe and Willis Creeks.

Access to the claim area is fair; using the old Copper Mountain road, an old forestry access road, and a newly completed logging road. In most places a four-wheeled drive vehicle is required.

Claims:

The report includes TAS claims #1 to #39 but those of current interest are:-

<u>Claim</u>	<u>Record No.</u>	<u>Expiry Date</u>
TAS 3-12	35864-35873	June 14, 1973
TAS 17	35878	" " "
TAS 19	35880	" " "
TAS 21	35882	" " "
TAS 23	35884	" " "
TAS 25	35886	" " "

Geology:

The property appears to be underlain by Nicola Group volcanic rock with intercalated sediments of Upper Triassic age. These rocks are mostly andesites and argillites respectively. Intrusive rocks include small plugs that appear to range compositionally from granodiorite to diorite. A few felsite dykes also crop out in the claims area.

Outcrop exposure in our area of interest is probably less than 5 percent. Consequently considerable reliance will have to be placed on geophysical and geochemical exploration methods.

Geochemical (Soil) Survey:

On the TAS and TAT claims, about 19.5 miles of picket lines were cut and flagged for survey control. In the northeast area of the grid the line separation is 400 feet and in the southern part the separation is 800 feet. The picket lines are marked and flagged at 200 feet intervals.

In the geochemical survey over 600 soil samples were collected along the picket lines at 200 feet intervals. Where possible, the upper part of the "B" soil horizon was sampled. The samples were assayed for copper only in the Phelps Dodge Corporation of Canada, Limited laboratory in North Vancouver.

Background for the copper assays was found to be about 35 p.p.m. Some high values were obtained (up to 414 p.p.m.); as well, several zones contain values that range from 50 to 150 p.p.m. However, assays were uniformly low from soils collected from claims on the south and southeast sides of the group.

The claims from which the soils gave low copper assays are not considered to be of interest to us at this time.


Geophysical Survey:

A magnetometer survey was also done on the same grid, using a Sharpe Model #MF-1 fluxgate magnetometer. The results of the survey are inconclusive and are of doubtful interest to us at this time. However, since magnetometer surveys have not proven to have much significance in the Copper Mountain-Ingerbelle ore body areas, one should possibly not be too strongly influenced by poor results.

In October an I.P. survey (10 line miles) was started, under the supervision of Mr. R. H. Beaton. Adverse weather conditions forced a halt to the survey at about 13% completion. This survey will most likely be completed at a later date.

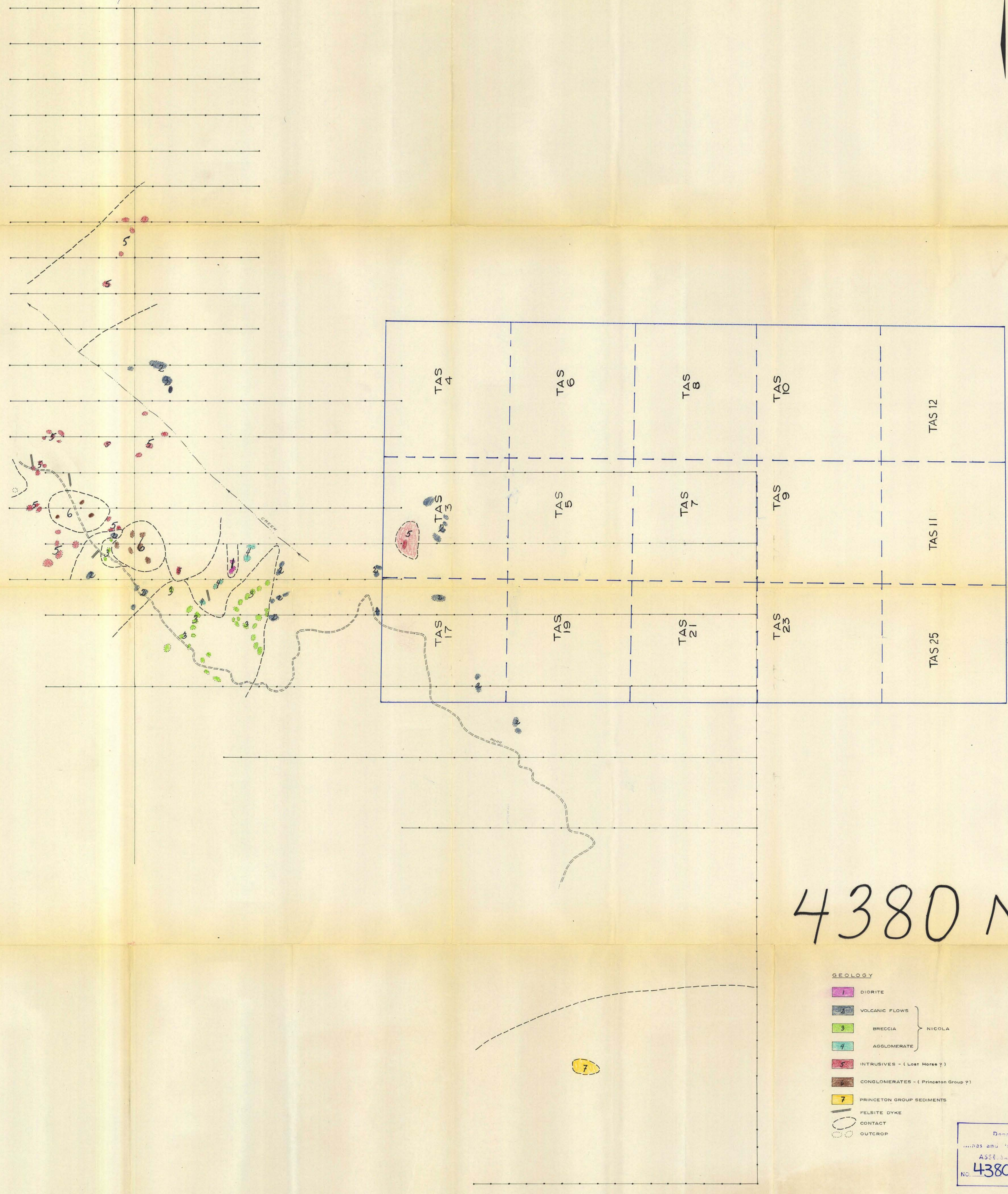
Recommendations:

1. Re-evaluation of TAS claims and elimination of those of poor potential, based on geological mapping and the geochemical soil survey.
2. Grouping of the remaining TAS claims for assessment purposes.
3. Continued and expanded geological mapping and geochemical (soil) sampling.
4. Make any necessary revision to the I.P. survey and complete the programme.


A. Morris, P.Eng.



92 N
88 N
84 N
80 N
76 N
72 N
68 N
64 N
60 N
56 N
52 N
48 N
44 N
40 N
36 N
32 N
28 N
24 N
16 N
8 N
0
40 S



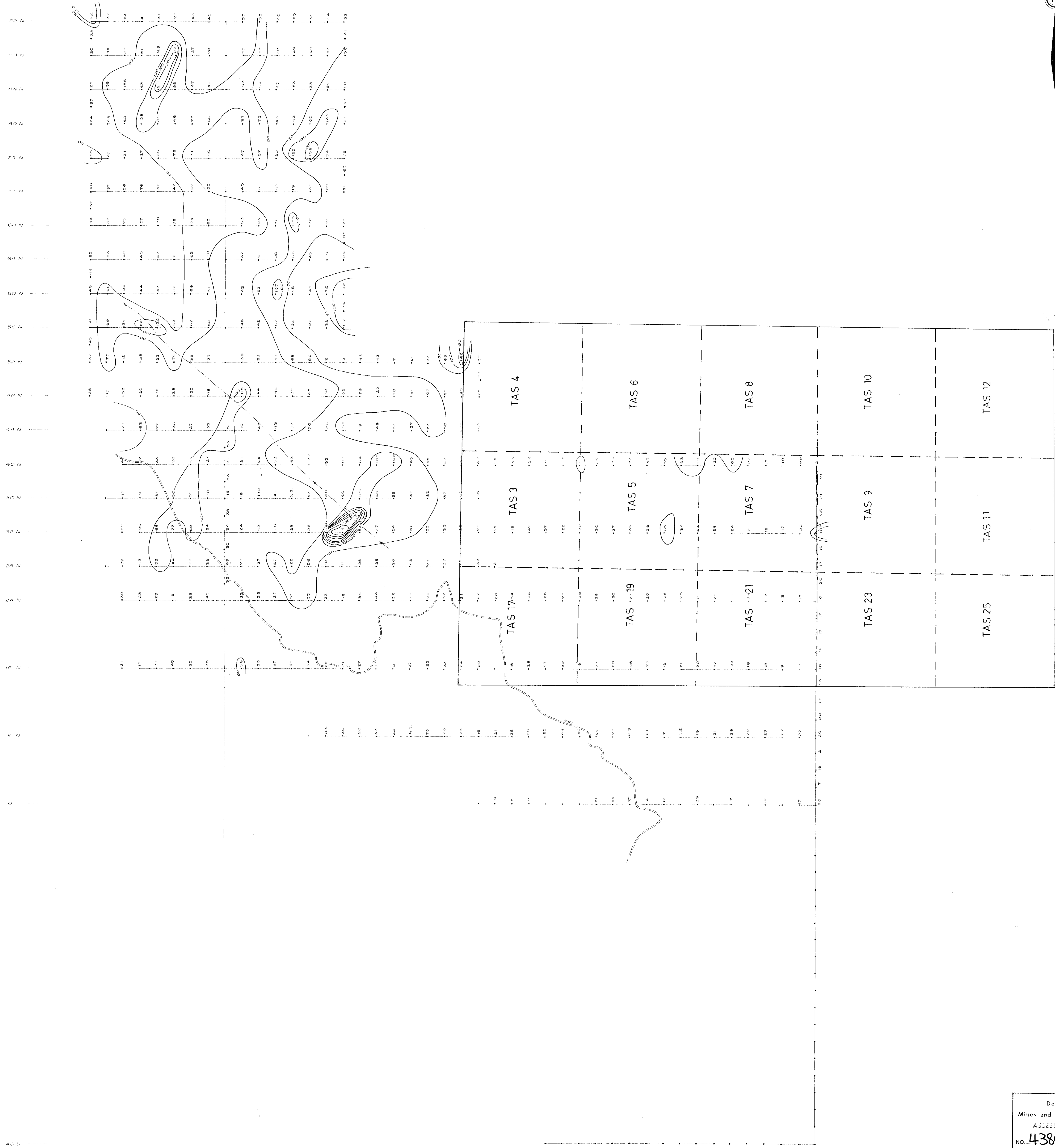
4380 M-1

- GEOLOGY**
- 1 DIORITE
 - 2 VOLCANIC FLOWS
 - 3 BRECCIA
 - 4 AGGLOMERATE
 - 5 INTRUSIVES - (Lost Horse ?)
 - 6 CONGLOMERATES - (Princeton Group ?)
 - 7 PRINCETON GROUP SEDIMENTS
 - 8 FELSITE DYKE
 - 9 CONTACT
 - 10 OUTCROP

Department of
 Minerals and Petroleum Resources
 ASSESSMENT REPORT
 NO. 4380 MAP #1

PHELPS DODGE CORPORATION OF CANADA, LIMITED
 TORONTO OFFICE
TAS CLAIM GROUP
 GEOLGY
 COPPER MOUNTAIN, PRINCETON, B.C.
 SCALE: 1" = 400'
 DRAWN BY: A.B. BISHOFF
 CHECKED BY: ALTAIR
 Date: Apr. 1952

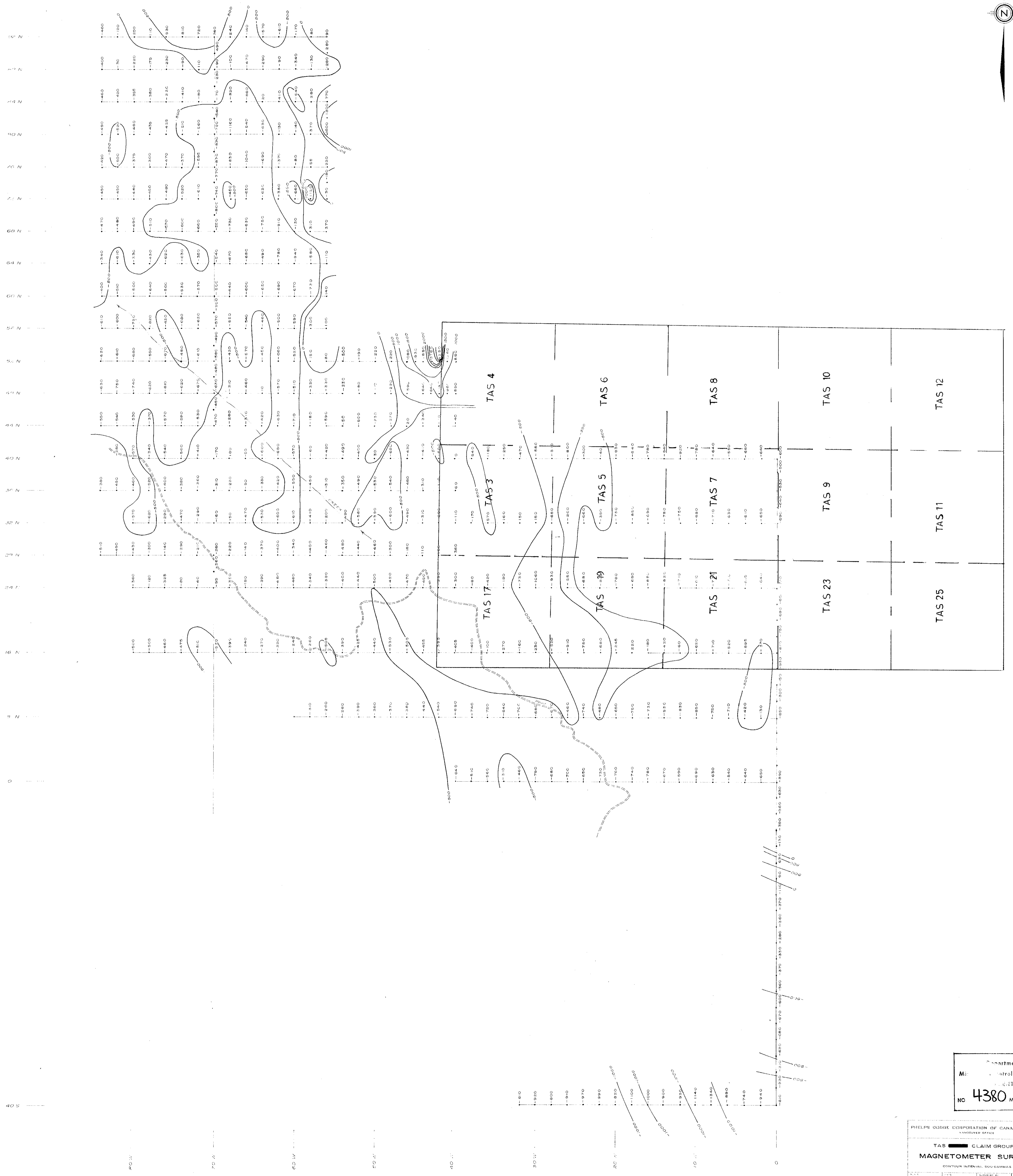
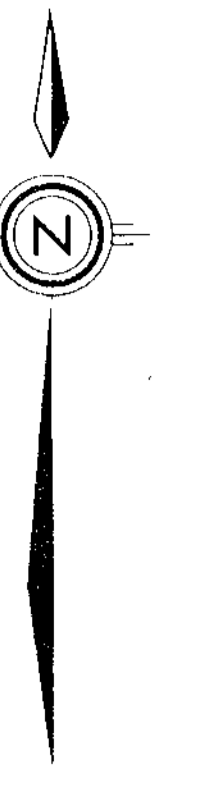
80 W
70 W
60 W
50 W
40 W
30 W
20 W
10 W
0



Department of
Mines and Petroleum Resources
ASSESSMENT REPORT
NO. 4380 MAP #2

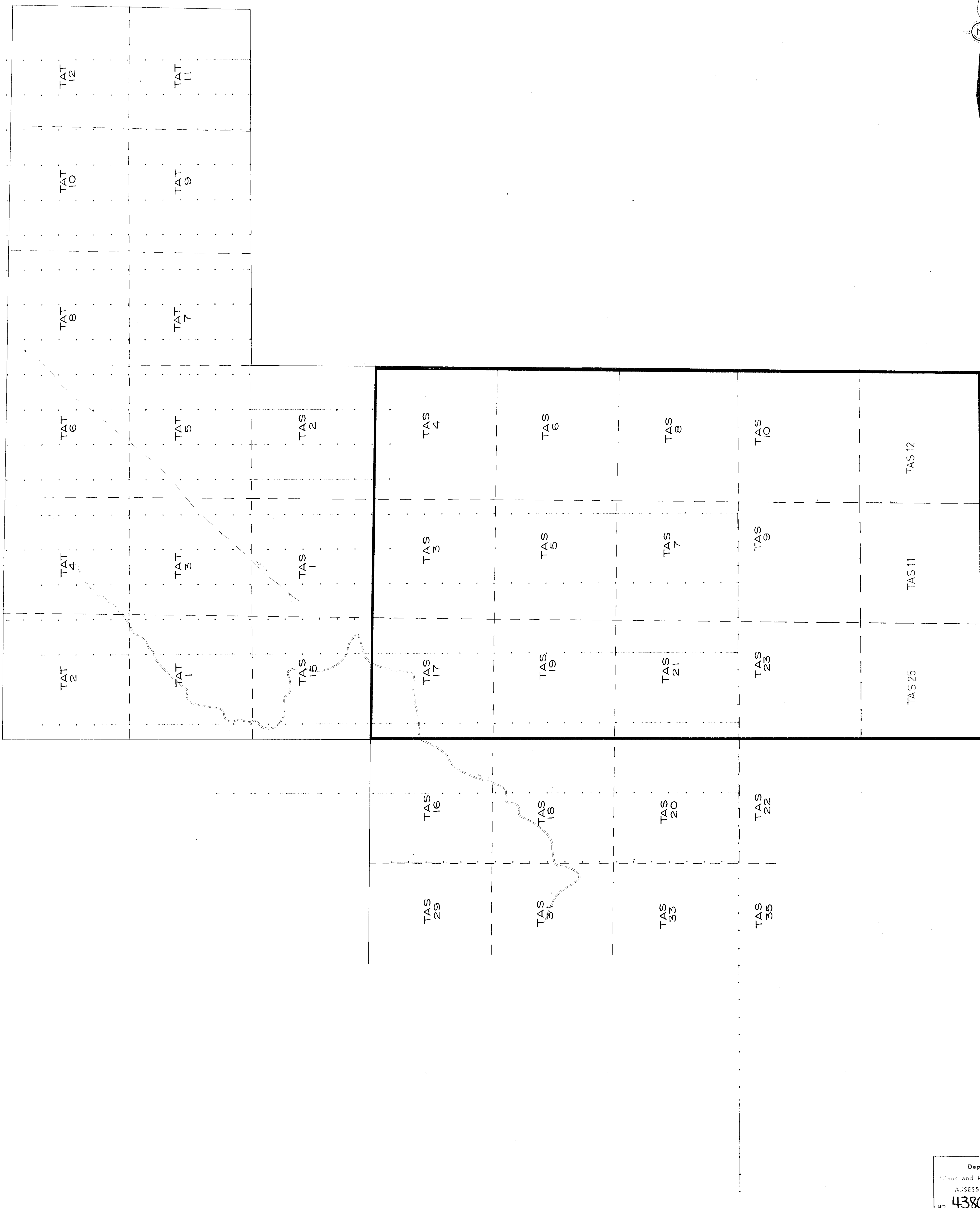
PHILIP DODGE CORPORATION OF CANADA, LIMITED
TAS CLAIM GROUP
GEOCHEMISTRY
CORPORATION IN BANKRUPTCY
SEPTEMBER, 1980
LABORATORY REPORT
LABORATORY

John W. ...



Department of
Mineral Resources
MAGNETOMETER SURVEY REPORT
NO 4380 MAP #3

PHILIP DODGE CORPORATION OF CANADA, LIMITED
TAS CLAIM GROUP
MAGNETOMETER SURVEY
CONTOUR INTERVAL: 500 GAMMAS
DATE: 1971
BY: S. BISHOP
1:40000
SEPTEMBER, 1971
June 19, 1971



Department of
Mines and Petroleum Resources
ASSESSMENT REPORT
NO. 4380 MAP #4

PHILIPS DOGGE CORPORATION OF CANADA, LIMITED
VANCOUVER OFFICE
TAS CLAIM GROUP
CLAIM LOCATION
COPPER MOUNTAIN, BRITISH COLUMBIA
A.S. RICHOFF
A.L. ALLEN
Gene H. ...
William ...