

4404

REPORT ON THE MAGNETOMETER SURVEY
NED, DEN, FC, LEM, FR, ELKE, DN MINERAL CLAIMS
FOR
GRANDORA EXPLORATION LTD. (NPL)
HIGHLAND VALLEY
KAMLOOPS MINING DISTRICT, B.C.

JUNE 2, 1973

VANCOUVER, B.C.

Department of
Mines and Petroleum Resources
ASSESSMENT REPORT
NO. **4404** MAP.....



TABLE OF CONTENTS

| | Page |
|--------------------------------------|------|
| 1-00 INTRODUCTION | 1 |
| 2-00 WORK COMPLETED, APRIL 1973 | 1 |
| 3-00 GENERAL | 1 |
| 3-1 Regional Geology | 1 |
| 3-2 Induced Polarization Results #68 | 2 |
| 4-00 MAGNETOMETER SURVEY | 2 |
| 4-1 Object | 2 |
| 4-2 Instrument | 2 |
| 4-3 Field Procedures | 3 |
| 4-4 Corrections | 3 |
| 4-5 Interpretation | 4 |
| 5-00 CONCLUSION | 5 |
| 6-00 CERTIFICATION | 6 |

MAPS

| | |
|---------------------------------|---------------------|
| #1 Property location map | 1 inch = 110 miles |
| #2 Claim Map | 1 inch = 2,000 feet |
| Magnetometer Survey Value Map | |
| #3 Sheet 1 | 1 inch = 300 feet |
| #4 Sheet 2 | 1 inch = 300 feet |
| Magnetometer Survey Contour Map | |
| #5 Sheet 1 | 1 inch = 300 feet |
| #6 Sheet 2 | 1 inch = 300 feet. |

REPORT ON THE MAGNETIC SURVEY
NED, DEN, FC, LEM, FR, ELKE, DN MINERAL CLAIMS
FOR
GRANDORA EXPLORATIONS LTD. (NPL)
HIGHLAND VALLEY
KAMLOOPS MINING DISTRICT, B.C.

1-00 INTRODUCTION:

The Grandora Explorations Ltd. (NPL), Highland Valley Property, formerly Adera Mining Ltd., lies 15 miles south and 10.5 miles east of Ashcroft, on the southwest slope of South Forge Mountain.

The property lies within the National Topographic System area 92 I/11 (B) and is in the Kamloops Mining Division. The centre of the property is located latitude $50^{\circ}32'N$, longitude $121^{\circ}03'W$.

The property is accessible from Ashcroft by 25 miles of paved road. There is jeep road access within the property.

2-00 WORK COMPLETED, APRIL 1973:

On April 10th, 1973 a program consisting of relocation of flagged lines and magnetometer survey was initiated on the property. The purpose of this program was to obtain magnetic data over the main part of the claim group and correlate the results with geological and induced polarization survey results to outline area for further, more detailed exploration.

A total of 47 line miles, using a 400 by 200 ft. grid was surveyed. Strong magnetic variations along the lines made it necessary to take readings at 50 ft. stations in selected areas.

3-00 GENERAL:

3-1 REGIONAL GEOLOGY:

The mineral claims held by Grandora Explorations Ltd. (NPL), lie entirely within the Guichon Batholith, a complex intrusive

of Mid-Triassic to Lower Jurassic Age. The Batholith is cut by several major faults, one, the Lornex Fault, bisects the property.

Two phases of the Guichon Batholith have been identified on the property, namely the Bethlehem phase and the Beaver (Guichon) phase quartz diorites.

The Kamloops volcanics occur on the north end of the property, capping South Forge Mountain.

3-2 INDUCED POLARIZATION RESULTS - 1968:

The induced Polarization survey, conducted by Huntec Ltd. for Adera Mining Ltd., was of reconnaissance nature and only portions of lines have been detailed.

The survey outlined four weakly anomalous areas located at 12N, 6+50E, 12S, 18W, 8N 12W and 64N, SE.

Drilling has been recommended on the first mentioned anomalous zone.

4-00 MAGNETOMETER SURVEY:

4-1 OBJECT:

The main object of the magnetic survey was to help in the interpretation of geological and induced polarization survey. It is felt, since areas favourable for mineralization in the Highland Valley generally are associated with magnetic lows, that results from this survey combined with the geological and induced polarization results can be used for locating targets warranting further work, specifically within the heavy overburden cover.

4-2 INSTRUMENT:

The instrument used was a sharp MF 1 Fluxgate magnetometer. This instrument measures the vertical component of the earth's

magnetic field.

It is self orienting, requiring only coarse levelling, and has a built in temperature compensation.

4-3 FIELD PROCEDURES:

Ground control was obtained by lines established on a 400ft by 200ft. pattern. Stations were marked on the ground by pickets or flagging. The flagged lines needed re-establishing at the beginning of the survey.

The magnetometer was zeroed for the property and a base station established by taking three readings over a one-half hour time interval. The readings were averaged and the obtained value used as a base reading.

All subsequent secondary base stations were established the same way, only each reading obtained was corrected for short term variations before averaged. All secondary base stations have been tied into a master base station.

4-4 CORRECTIONS:

For purpose of magnetic correction it was assumed that all magnetic variations are linear over a short time interval. Based on this assumption, the following equation gives a good approximation:

- Let: B_c = corrected base station reading (obtained by averaging a number of readings),
 B_x = base station reading at a later time.
 C_1 = long term (daily) correction.
 C_s = short term correction.
 B_b = base station reading at the start of traverse.
 B_e = base station reading at the end of traverse.
 T = total time elapsed from the start to the end of traverse.

T = time elapsed from the start of traverse to time when reading at station Y has been taken.

R_y = reading at station Y.

R_c = corrected reading for any station Y

$$\begin{array}{rcc} \text{Then:} & R_c = B_c - B_x + R_y + \frac{(B_b + B_e) T}{} \\ & & \cdot & & T \\ & & \cdot & & \cdot \\ & & \cdot & & \cdot \\ & & \cdot & & \cdot \\ & \text{Long Term} & & \text{Short Term} & \\ & \text{Correction} & & & \end{array}$$

Elapsed time for individual traverses was always less than one hour. Diurnal variation for any traverse was less than 1 gamma per minute, this is considered tolerable.

The field data was corrected, plotted and contoured for interpretational purpose.

4-5 INTERPRETATION:

The general magnetic relief varies from 0 to 2000 gamma with a maximum of 4,000 gamma as a spot reading. Average magnetic intensity is in the order of 750 gammas.

In general none of the mapped geological features are recognizable from the magnetic data. The Intrusive-Kamloops Volcanic contact does not lie within the surveyed area.

A northerly trending magnetic low, through approximately 32W, trending across the length of the surveyed area coincides with the mapped position of the Lornex Fault zone. The magnetic low is not one continuous, but rather several narrow zones. The induced polarization anomalies coincide in general with magnetic lows but the inverse is not true.

5-00 CONCLUSION:

The magnetic survey shows that the Lornex Fault, cuts through the length of the property. It is outlined by several northerly trending discontinuous magnetic lows.

The contact between the Bethlehem and Beaver phase can not be recognized.

Induced polarization anomalies indicated from a reconnaissance survey completed by Huntex Ltd. in 1968 appear to be associated with areas of low magnetic intensity.

Respectfully submitted by:



F. Holcapek, Geologist.

June 2nd, 1973

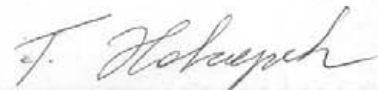
Vancouver, B.C.

CERTIFICATION

I, Ferdinand Holcapek of 107 - 325 Howe Street, Vancouver 1, British Columbia, do hereby certify that:

1. I am a graduate of the University of British Columbia, Vancouver, British Columbia, with a B.Sc. degree in Geology, 1969.
2. From 1961 to 1969 I have been employed in mining exploration in British Columbia and the Yukon as assistant to the exploration geologist. Since graduation I have been engaged in mining exploration in British Columbia, the Yukon and South Australia.
3. I am an Associated Member of the Society for Exploration Geophysicists, the Canadian Institute of Mining and Metallurgy, The Geological Association of Canada and the Geological Society of Australia.
4. I am classified as an Engineer in Training by the Association of Professional Engineers of British Columbia.
5. I have personally supervised the magnetic survey conducted on the property.
6. I have not received, nor do I expect to receive, any interest in the properties or securities of Grandora Exploration Ltd. (NPL).

signed:



Ferdinand Holcapek,
Geologist.

2nd June, 1973.

Vancouver, B.C.

DOMINION OF CANADA:
PROVINCE OF BRITISH COLUMBIA:
To Wit:

In the Matter of re-establishing lines and magnetometer survey on the New Purple Group, Highland Valley, B.C.

I, V.A. McKee

of Agilis Engineering Ltd.,
107 - 325 Howe Street, Vancouver 1, B.C.

in the Province of British Columbia, do solemnly declare that the following costs were incurred and personnel employed in carrying out the work.

Personnel:


| | |
|--|-------------------|
| F. Holcapek - Supervision-3days @ \$125/day | \$ 375.00 |
| Report | |
| D. Taylor - Geologist - 3 days @ \$100/day | \$ 300.00 |
| B. Turner - Fieldman - 15 days @ \$ 60/day | \$ 900.00 |
| G. Lorimer - Assistant - 15 days @ \$ 40/day | \$ 600.00 |
| B. Talbot - Draughting - 40 hrs. @ \$ 8.50/hr. | \$ 340.00 |
| | <u>\$2,515.00</u> |

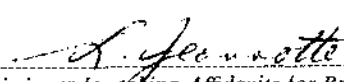
Disbursements:

| | | |
|------------------------|-----------------|--------------------------|
| Meals and accomodation | \$158.65 | |
| Groceries | \$113.03 | |
| Gas, supplies | \$106.81 | |
| Auto rental | \$315.40 | |
| Magnetometer rental | \$187.00 | |
| Typing, printing | <u>\$ 45.00</u> | |
| | \$925.89 | |
| + 10% service charge | <u>\$ 92.58</u> | <u>\$1,018.47</u> |
| | | <u><u>\$3,533.47</u></u> |

And I make this solemn declaration conscientiously believing it to be true, and knowing that it is of the same force and effect as if made under oath and by virtue of the "Canada Evidence Act."

Declared before me at the City
of Vancouver, in the
Province of British Columbia, this 7
day of June, 1973, A.D.)

 V A McKee


A Commissioner for taking Affidavits for British Columbia or
A Notary Public in and for the Province of British Columbia.

Sub-mining Recorder

DOMINION OF CANADA:
PROVINCE OF BRITISH COLUMBIA:
To Wit:

In the Matter of re-establishing lines and magnetometer survey on the New Purple Group, Highland Valley, B.C.

I, V.A. McKee

of Agilis Engineering Ltd.,
107 - 325 Howe Street, Vancouver 1, B.C.

in the Province of British Columbia, do solemnly declare that the following costs were incurred and personnel employed in carrying out the work.

Personnel:

| | |
|--|-------------------|
| F. Holcapek - Supervision-3days @ \$125/day | \$ 375.00 |
| Report | |
| D. Taylor - Geologist - 3 days @ \$100/day | \$ 300.00 |
| B. Turner - Fieldman - 15 days @ \$ 60/day | \$ 900.00 |
| G. Lorimer - Assistant - 15 days @ \$ 40/day | \$ 600.00 |
| B. Talbot - Draughting - 40 hrs. @ \$ 8.50/hr. | \$ 340.00 |
| | <u>\$2,515.00</u> |

Disbursements:

| | | |
|------------------------|----------|-------------------|
| Meals and accomodation | \$158.65 | |
| Groceries | \$113.03 | |
| Gas, supplies | \$106.81 | |
| Auto rental | \$315.40 | |
| Magnetometer rental | \$187.00 | |
| Typing, printing | \$ 45.00 | |
| | \$925.89 | |
| + 10% service charge | \$ 92.58 | \$1,018.47 |
| | | <u>\$3,533.47</u> |

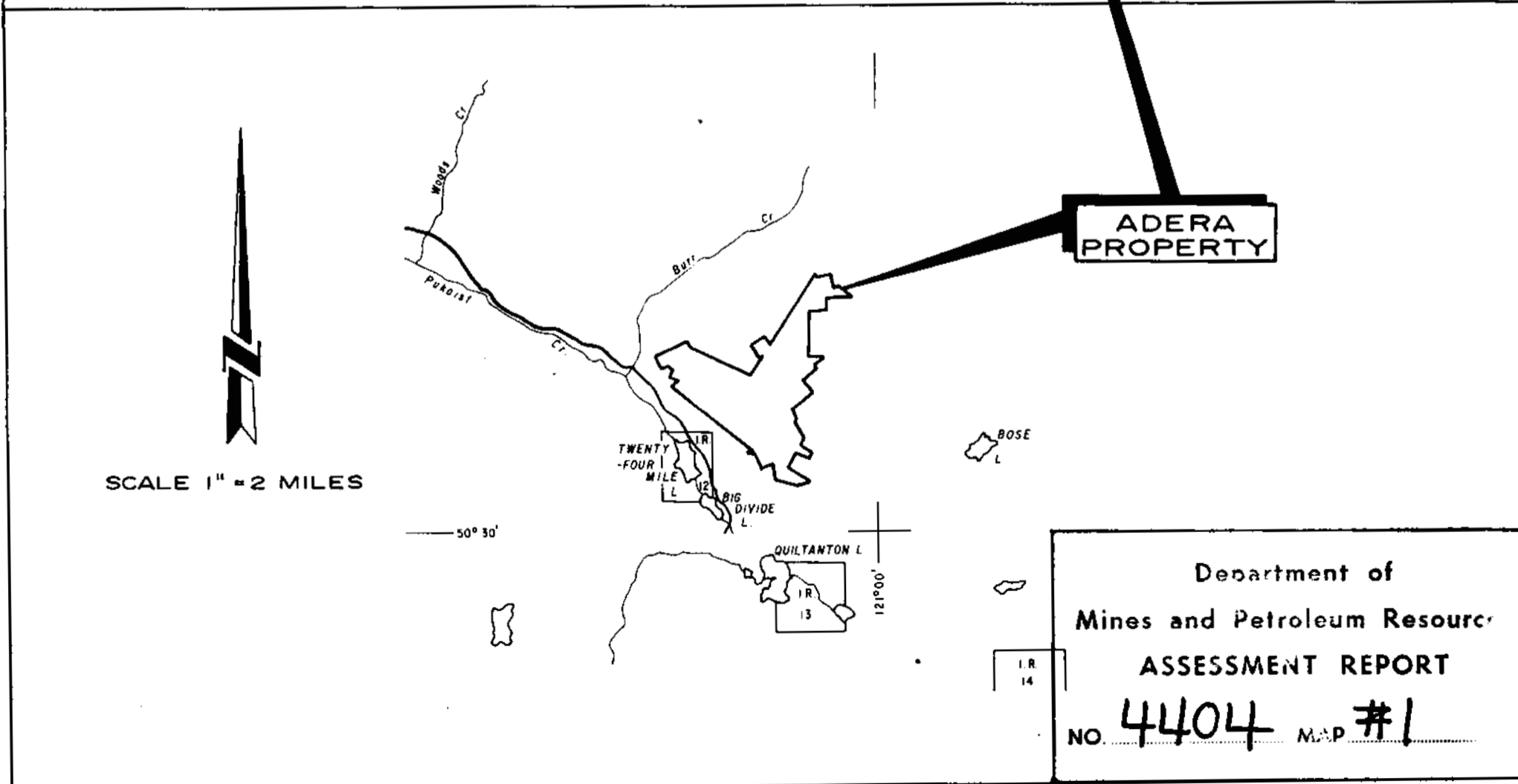
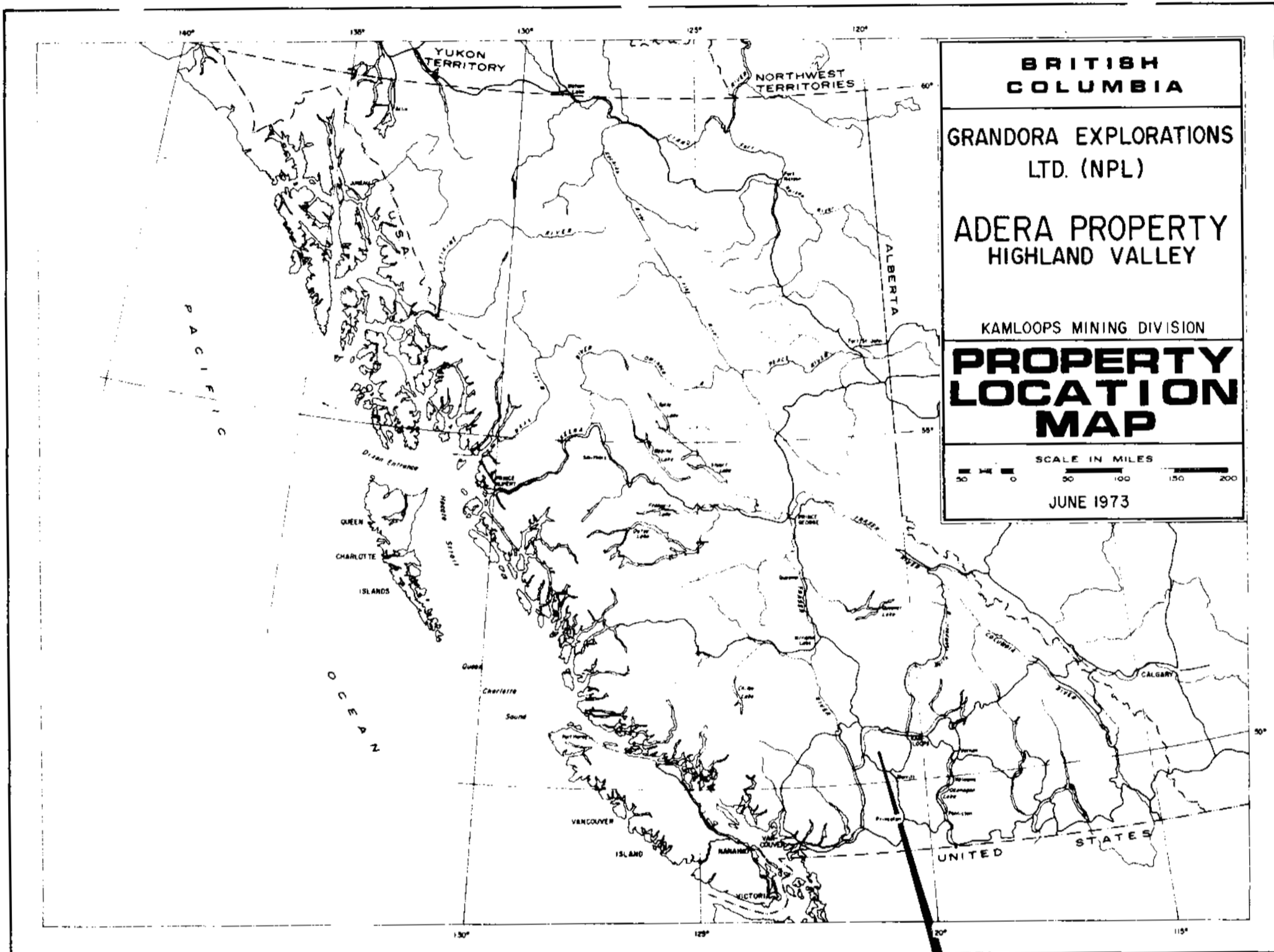
And I make this solemn declaration conscientiously believing it to be true, and knowing that it is of the same force and effect as if made under oath and by virtue of the "Canada Evidence Act."

Declared before me at the *City*
of *Vancouver*, in the
Province of British Columbia, this *7*
day of *June, 1973*, A.D.

V. A. McKee

A. J. Speer
A Commissioner for taking Affidavits for British Columbia or
A Notary Public in and for the Province of British Columbia.

Subs mining Recorder

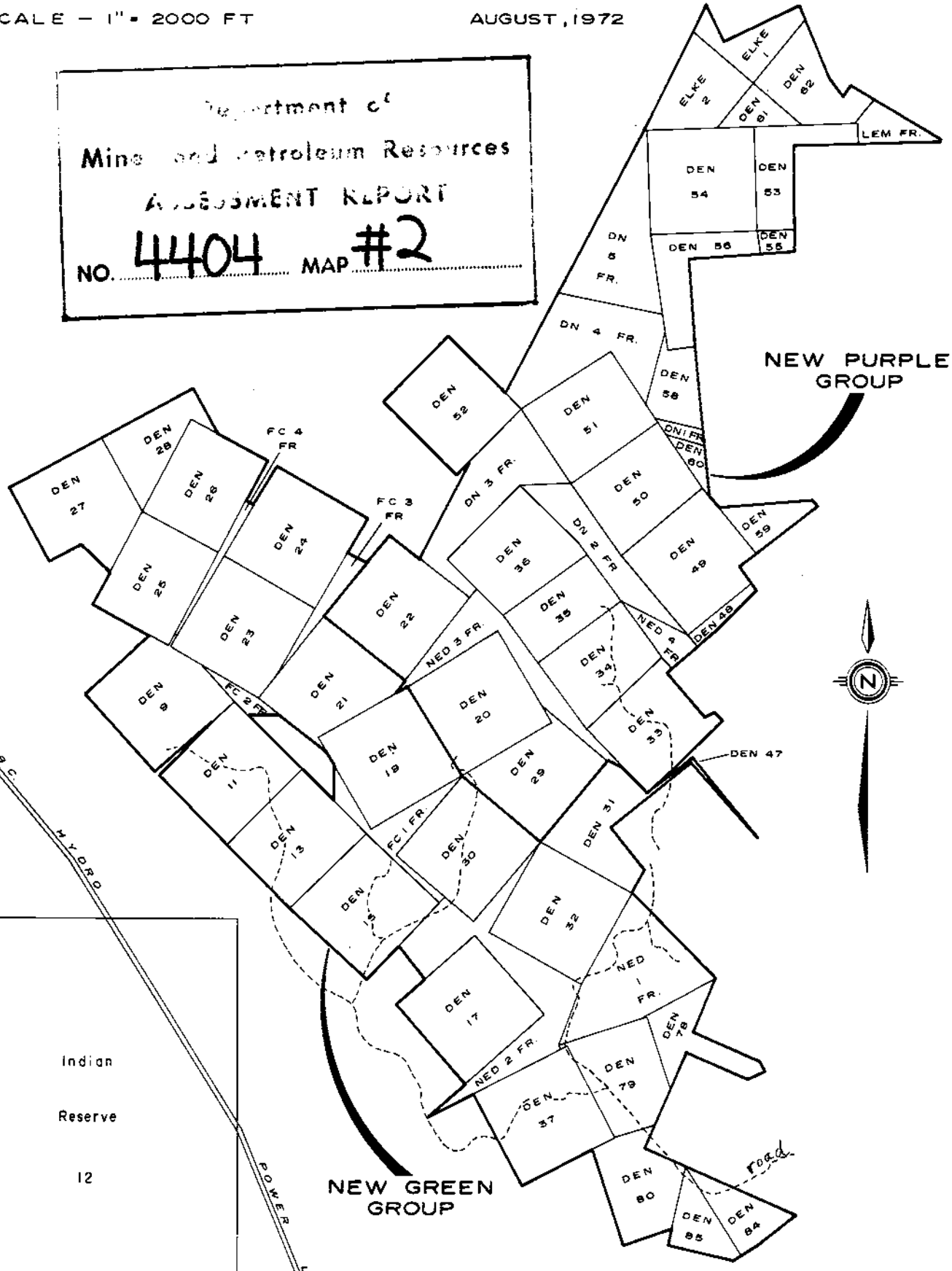


CLAIM MAP

SCALE - 1" = 2000 FT

AUGUST, 1972

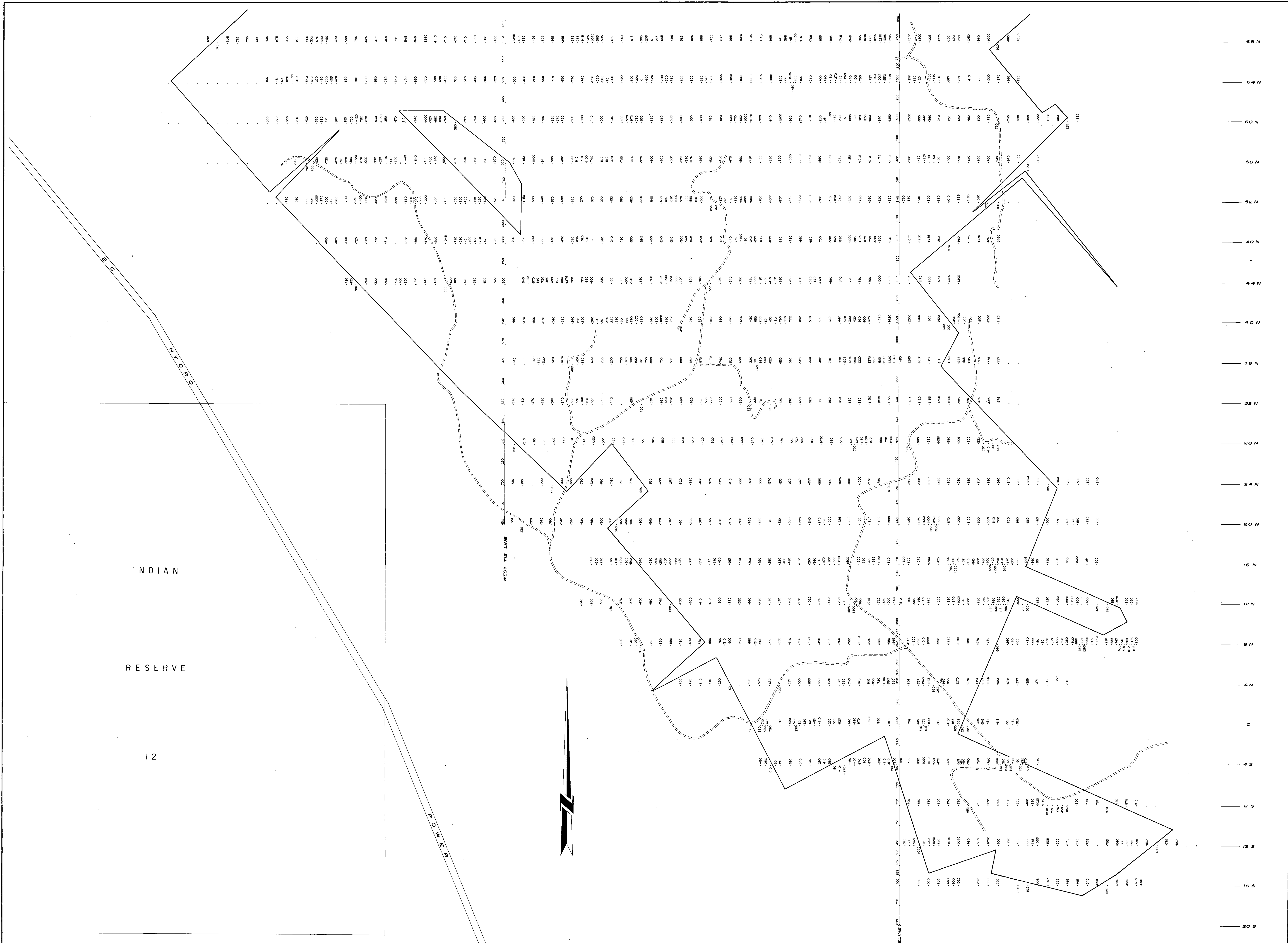
Department of
Mines and Petroleum Resources
ASSESSMENT REPORT
NO. **4404** MAP **#2**



NEW PURPLE GROUP

NEW GREEN GROUP

Indian
Reserve
12



INDIAN

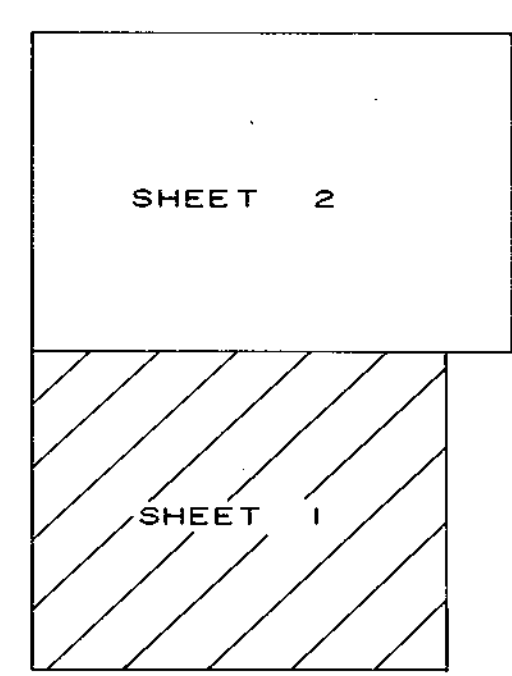
RESERVE

12

88 W 84 W 80 W 76 W 72 W 68 W 64 W 60 W 56 W 52 W 48 W 44 W 40 W 36 W 32 W 28 W 24 W 20 W 16 W 12 W 8 W 4 W 0 4 E 8 E 12 E 16 E 20 E 24 E 28 E

68 N
64 N
60 N
56 N
52 N
48 N
44 N
40 N
36 N
32 N
28 N
24 N
20 N
16 N
12 N
8 N
4 N
0
4 S
8 S
12 S
16 S
20 S

Department of
Mines and Petroleum Resources
ASSESSMENT REPORT
4404 MAP #3



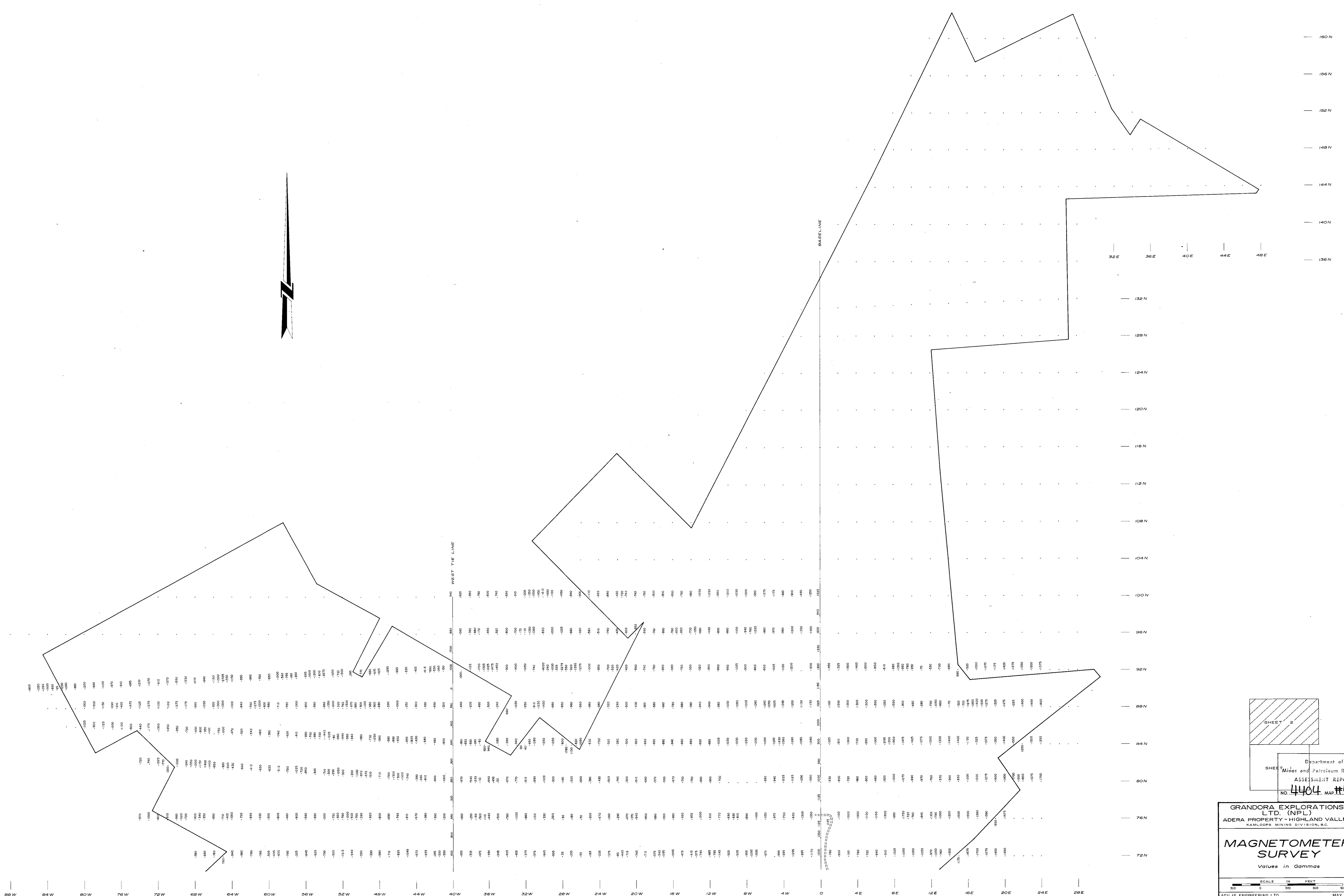
GRANDORA EXPLORATIONS
LTD. (NPL)
ADERA PROPERTY - HIGHLAND VALLEY
KAMLOOPS MINING DIVISION B.C.

**MAGNETOMETER
SURVEY**

Values in Gammas

SCALE IN FEET
0 100 200 300 400 500 600 700 800 900

AGLIS ENGINEERING LTD. MAY, 1973

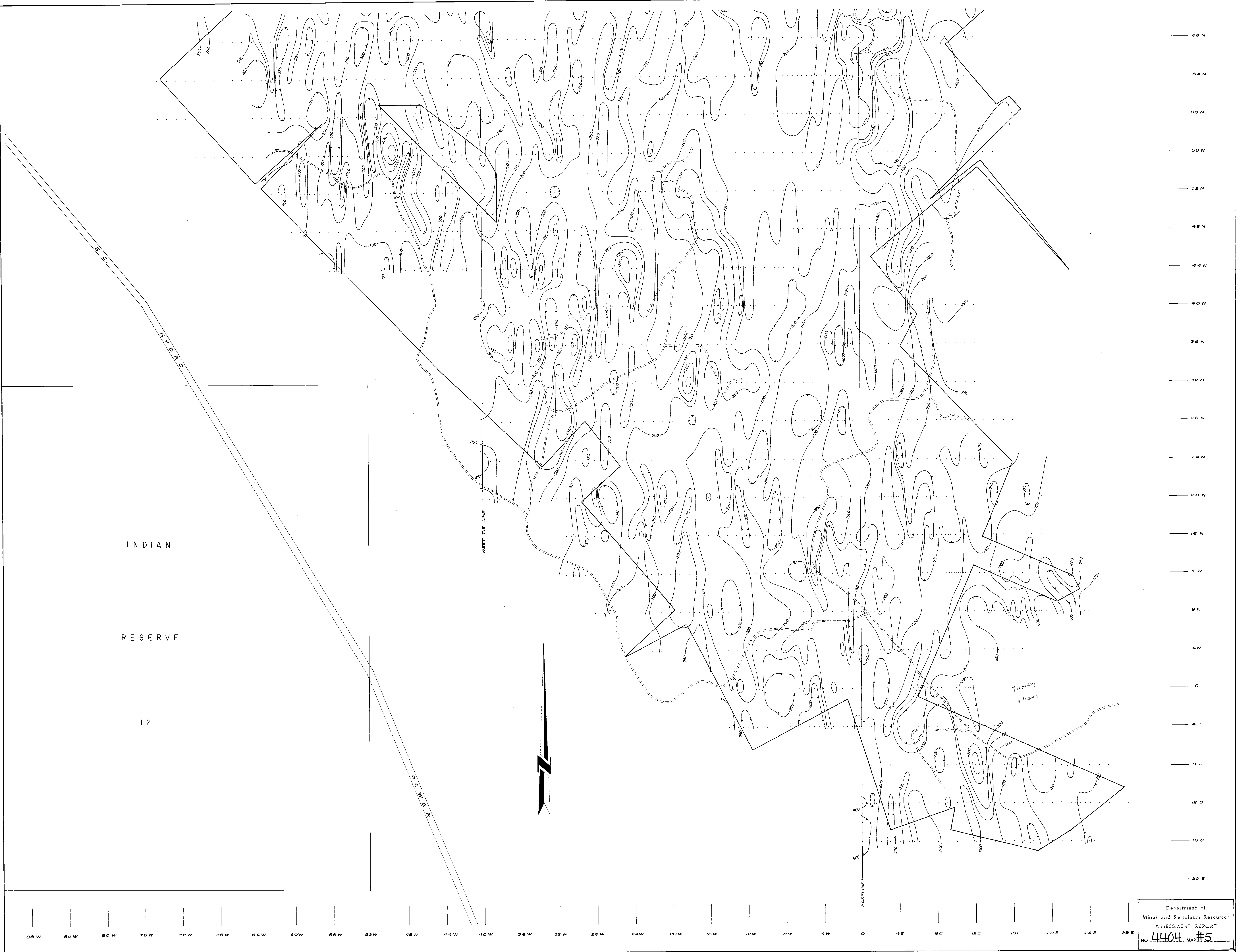


Department of
 Mines and Petroleum Resources
 ASSESSMENT REPORT
 NO. 4404 MAP #4

GRANDORA EXPLORATIONS
 LTD. (NPL)
 ADERA PROPERTY - HIGHLAND VALLEY
 KAMLOOPS MINING DIVISION, B.C.

**MAGNETOMETER
 SURVEY**
 Values in Gammas

SCALE IN FEET
 0 300 600
 AGILIS ENGINEERING LTD. MAY, 1973



INDIAN
RESERVE
12

B.C.
HYDRO

WEST TIE LINE

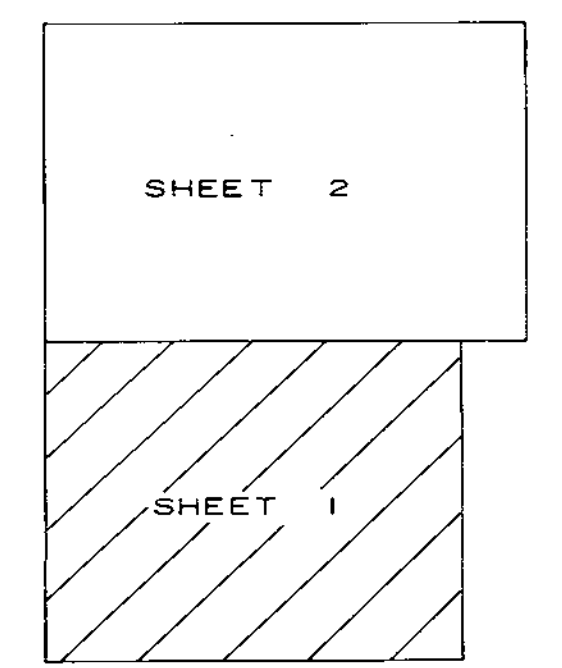
BASELINE

Tubbing
Holes

88 W 84 W 80 W 76 W 72 W 68 W 64 W 60 W 56 W 52 W 48 W 44 W 40 W 36 W 32 W 28 W 24 W 20 W 16 W 12 W 8 W 4 W 0 4 E 8 E 12 E 16 E 20 E 24 E 28 E

68 N
64 N
60 N
56 N
52 N
48 N
44 N
40 N
36 N
32 N
28 N
24 N
20 N
16 N
12 N
8 N
4 N
0
4 S
8 S
12 S
16 S
20 S

Department of
Mines and Petroleum Resource
ASSESSMENT REPORT
NO. 4404 MAP #5



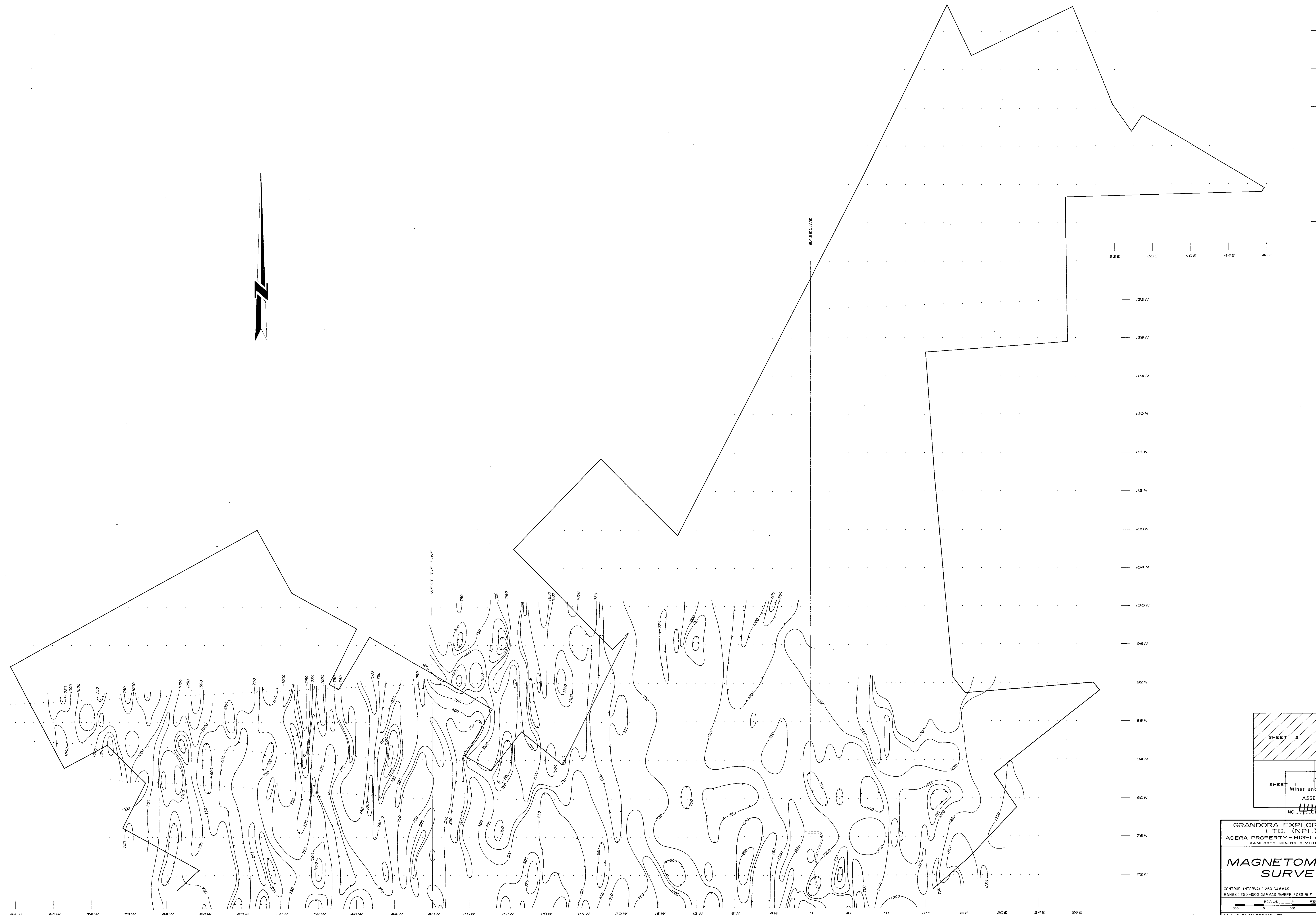
GRANDORA EXPLORATIONS
LTD. (NPL)
ADERA PROPERTY - HIGHLAND VALLEY
KAMLOOPS MINING DIVISION B.C.

**MAGNETOMETER
SURVEY**

CONTOUR INTERVAL: 250 GAMMAS
RANGE: 250-1500 GAMMAS WHERE POSSIBLE

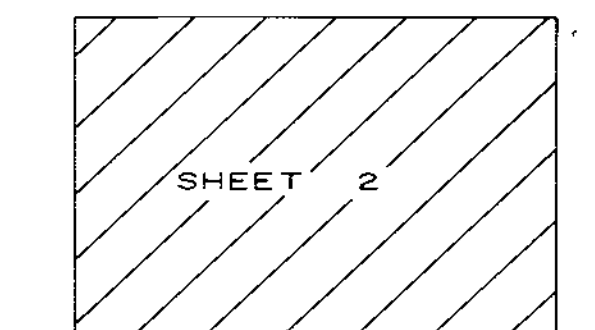
SCALE IN FEET
0 300 600 900

AGILIS ENGINEERING LTD. MAY, 1973



160 N
156 N
152 N
148 N
144 N
140 N
136 N
132 N
128 N
124 N
120 N
116 N
112 N
108 N
104 N
100 N
96 N
92 N
88 N
84 N
80 N
76 N
72 N

88 W 84 W 80 W 76 W 72 W 68 W 64 W 60 W 56 W 52 W 48 W 44 W 40 W 36 W 32 W 28 W 24 W 20 W 16 W 12 W 8 W 4 W 0 4 E 8 E 12 E 16 E 20 E 24 E 28 E



Department of
Mines and Petroleum Resources
ASSESSMENT REPORT
NO. 4404 MAP #6

GRANDORA EXPLORATIONS
LTD. (NPL)
ADERA PROPERTY - HIGHLAND VALLEY
KAMLOOPS MINING DIVISION, B.C.

MAGNETOMETER SURVEY

CONTOUR INTERVAL: 250 GAMMAS
RANGE: 250-1500 GAMMAS WHERE POSSIBLE

SCALE: IN FEET
0 300 600 900

AGILIS ENGINEERING LTD. MAY, 1973