

4417

PROPERTY PREPARATION REPORT

on the 92H/10E

JE, NU, & FAN CLAIMS

49°36' N 120°33' W

SIMILKAMEEN MINING DIVISION

for Fan, J.E., Nu

AALENIAN RESOURCES LTD.

Author: A. Homenuke, Geologist

P. Eng: D.C. Malcolm

May 29th, 1973

Date of Work: April 11-27, 1973

Department of
Mines and Technical Surveys
ASSESSMENT REPORT
NO 4417

C O N T E N T S

	<u>PAGE</u>
Introduction	3
Location	3
Claims	3 - 4
Preparation:	
Grid	4
Topographic Survey	4
Photogeological Int.	4 - 5

A P P E N D I C E S

I Certificates

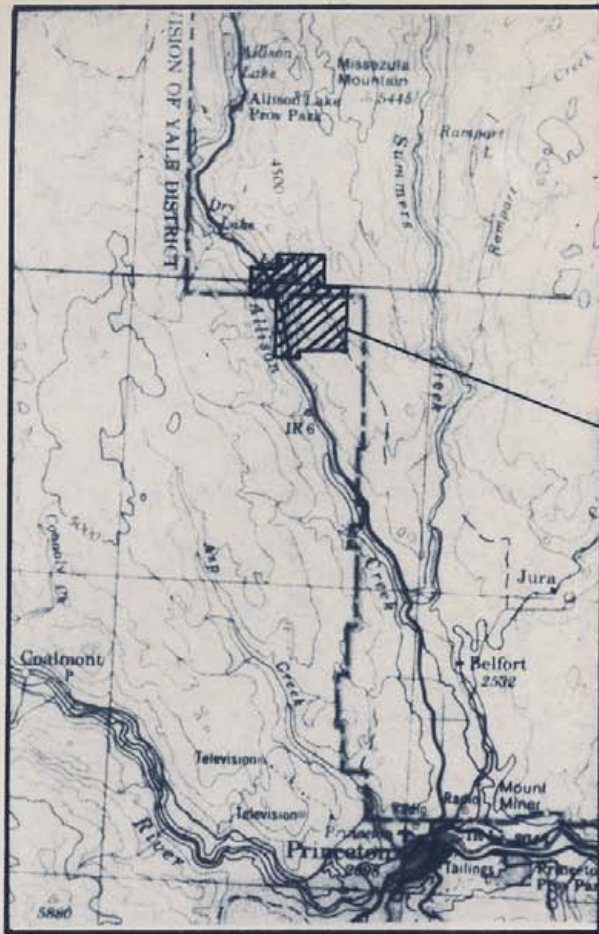
I L L U S T R A T I O N S

Figure 1 #1	Location and Claims Map	2
Figure 2 #2	Grid Map	
Figure 3 #3	Topographic Map	
Figure 4 #4	Photomosaic - Photogeological Interpretation Map	

Aalenian Resources Ltd.

Laird Lake Property

LOCATION & CLAIMS MAP



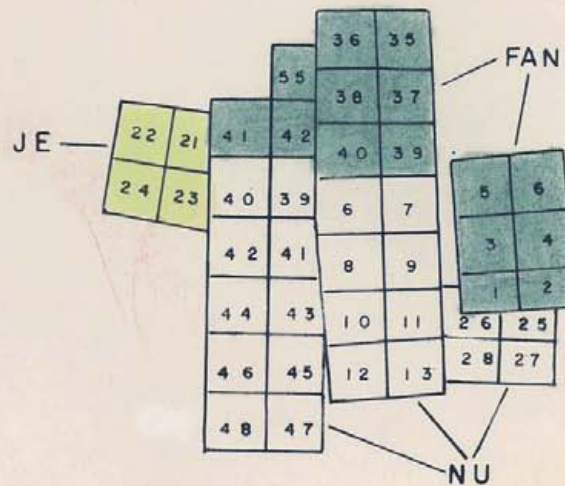
Part of N.T.S. 92 H/10

1" = 4 miles

FAN, NU & JE CLAIMS

Department of
Mines and Petroleum Resources
ASSESSMENT REPORT

NO. 4417 MAP #1



EXPLORATION SURVEYS LTD.

FIG. 1

INTRODUCTION:

Aalenian Resources Ltd. have obtained 41 claims included in the FAN and J Claim Groups, Similkameen Mining Division, B.C. Earlier workers found occurrences of copper-pyrite mineralization and a magnetometer survey indicated several anomalous areas.

Significant copper deposits occur near to the east on the Adonis Mines Ltd. property.

A report dated March 26th, 1973 by D.C. Malcolm, P. Eng., Consulting Geologist, indicates that similar geological situations occur on the Aalenian Property as on the Adonis property. He recommends a program of further magnetometer surveys, detailed geological and geochemical work and some percussion drilling. To facilitate these surveys, Tri-con Exploration Surveys Ltd. were retained to establish a grid and prepare the base maps of the area.

As the west side of the property is very steep and difficult to grid, it was necessary to have a topographic map prepared for control on the ungridded areas. The map will also aid in the interpretation of geochemical data.

To aid in future geological interpretation a photo-mosaic was prepared and some photogeological interpretation was done.

LOCATION:

The FAN and J Claim Groups are 12 miles north of Princeton east of Laird Lake on Highway 5. Access is provided by the Oliphant Mountain Road and the many logging roads which extend over the property.

CLAIMS:

Forty-one claims were located in the Similkameen Mining Division of British Columbia as follows:

<u>Claims</u>	<u>Record Number</u>	<u>Assessment Due</u>	
FAN 1-6	34,658-34,663	November 29, 1973	
FAN 35-42	34,692-34,699	November 29, 1973	FAN Group
FAN 55	34,712	November 29, 1973	

<u>Claim</u>	<u>Record Number</u>	<u>Assessment Due</u>	
JE 21-24	35,417-35,420	April 28, 1973	
NU 6-13	35,299-35,306	April 28, 1973	J Group
NU 25-28	35,311-35,314	April 28, 1973	
NU 39-48	35,531-35,540	May 8, 1973	

PREPARATION:

GRID

Thirty-five line miles of grid were laid out in an east-west direction from a base line running north-south which cuts the property approximately in half. The lines were put in by chain and compass at 400 foot intervals with 100 foot station intervals. The grid plan is shown with claims on Figure 2.

TOPOGRAPHIC SURVEY

McElhanney Surveying and Engineering Ltd. were retained to prepare a topographic base map at 1" = 400' with 50' contour intervals. All discernible planimetric features such as roads and lakes were plotted. The results of this work are shown on Figure 3.

PHOTOGEOLOGICAL INTERPRETATION

To obtain all possible information preliminary to the field surveys, a photogeological interpretation was carried out. A photomosaic was prepared at 1" = 400' to provide a plotting base on the same scale as the other surveys.

Available air photos did not provide sufficient resolution to examine smaller details. It was, however, possible to delineate some of the more prominent features in conjunction with GSC map 888A.

An area of possible intrusive was outlined on the basis of topographic texture. Several linears, including three stronger ones which may indicate faults, were plotted.

The general textural trend of the area to the east of the possible intrusive was indicated. This trend could be due to bedding in volcanic rocks. A cursory field examination corroborated this interpretation.

The above features are shown on Figure 4.

Respectfully Submitted
TRI-CON EXPLORATION SURVEYS LTD.

A handwritten signature in cursive script, appearing to read "A.M. Homenuke".

A.M. Homenuke
Geologist

APPENDIX I

CERTIFICATES

1. A.M. Homenuke, Geologist
2. D.C. Malcolm, P. Eng.

1. STATEMENT OF OPERATOR'S QUALIFICATIONS

I, Alexander M. Homenuke, DO HEREBY CERTIFY:

- That I am a graduate in Mining Technology from the British Columbia Institute of Technology.
- That I have further studied Geological Engineering at the Colorado School of Mines.
- That I have been employed by Tri-con Exploration Surveys Ltd. since June of 1969 in mineral exploration as a geochemical, geological and geophysical operator.
- That I am presently employed by Tri-con Exploration Surveys Ltd. in the capacity of Geologist.

DATED at Vancouver, British Columbia this 29th day of May 1973.

TRI-CON EXPLORATION SURVEYS LTD.



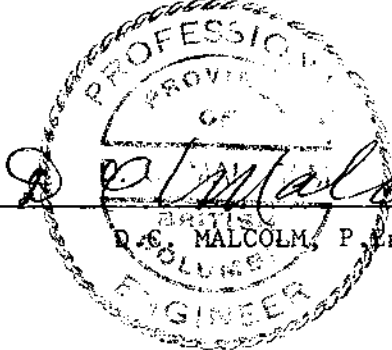
A.M. Homenuke,
Geologist

2. CERTIFICATE

This is to certify that:

1. I, DOUGLAS C. MALCOLM am a resident of Vancouver, B.C. and live at 2290 West 23rd Avenue.
2. I am a graduate of the University of British Columbia with the degree of Bachelor of Applied Science in Geological Engineering (1935).
3. I am a member of the Association of Professional Engineers of British Columbia and Ontario and have practised my profession continuously since graduation.
4. I have not, directly or indirectly, received or expect to receive, any interest, direct or indirect in the property of AALENIAN RESOURCES LTD., or of any affiliate; or beneficially own, directly or indirectly, any securities of the company or of any affiliate.
5. I have reviewed a report dated May 29th, 1973 based on work conducted by TRI-CON EXPLORATION SURVEYS LTD. This work was conducted between April 11th and 27th, 1973.

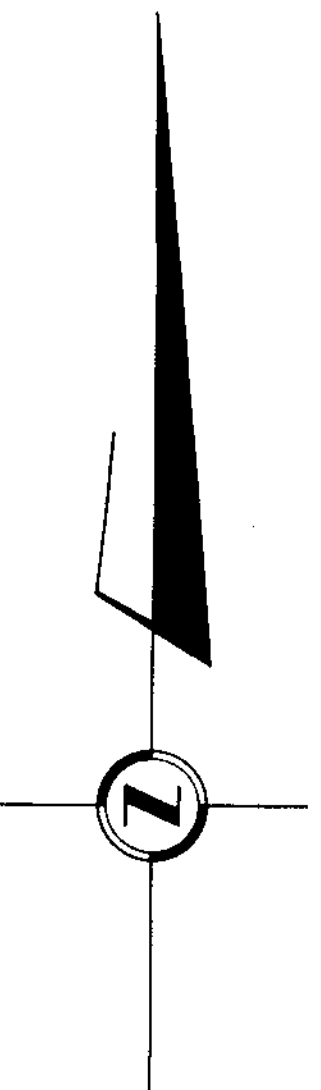
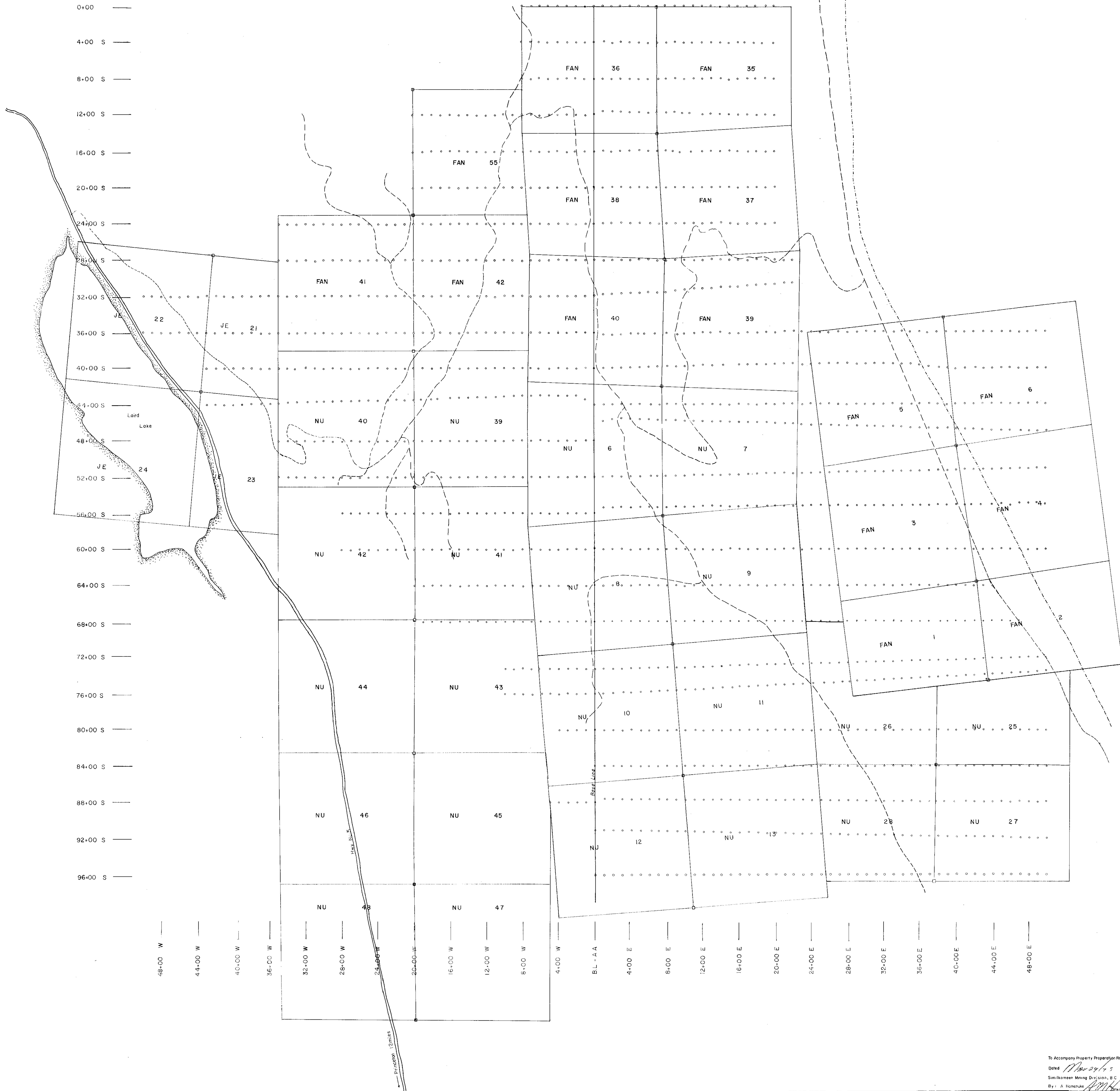
DATED this 14 day of MAY, 1973

A circular professional seal for Douglas C. Malcolm, P. Eng. The seal contains the text "PROFESSIONAL ENGINEER OF BRITISH COLUMBIA" around the perimeter. A signature "D. C. Malcolm" is written across the seal. Below the seal, the name "D. C. MALCOLM, P. Eng." is printed.

D. C. MALCOLM, P. Eng.

0+00 —
 4+00 S —
 8+00 S —
 12+00 S —
 16+00 S —
 20+00 S —
 24+00 S —
 28+00 S —
 32+00 S —
 36+00 S —
 40+00 S —
 44+00 S —
 48+00 S —
 52+00 S —
 56+00 S —
 60+00 S —
 64+00 S —
 68+00 S —
 72+00 S —
 76+00 S —
 80+00 S —
 84+00 S —
 88+00 S —
 92+00 S —
 96+00 S —

48+00 W —
 44+00 W —
 40+00 W —
 36+00 W —
 32+00 W —
 28+00 W —
 24+00 W —
 20+00 W —
 16+00 W —
 12+00 W —
 8+00 W —
 4+00 W —
 BL - A A —
 4+00 E —
 8+00 E —
 12+00 E —
 16+00 E —
 20+00 E —
 24+00 E —
 28+00 E —
 32+00 E —
 36+00 E —
 40+00 E —
 44+00 E —
 48+00 E —

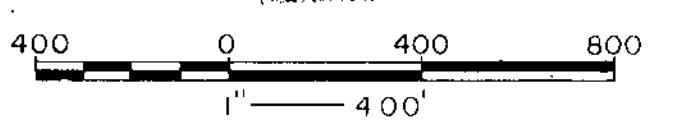


LEGEND

- Claim Boundary & Claim Post
- Survey Station
- Road
- Power Line
- Shore Line

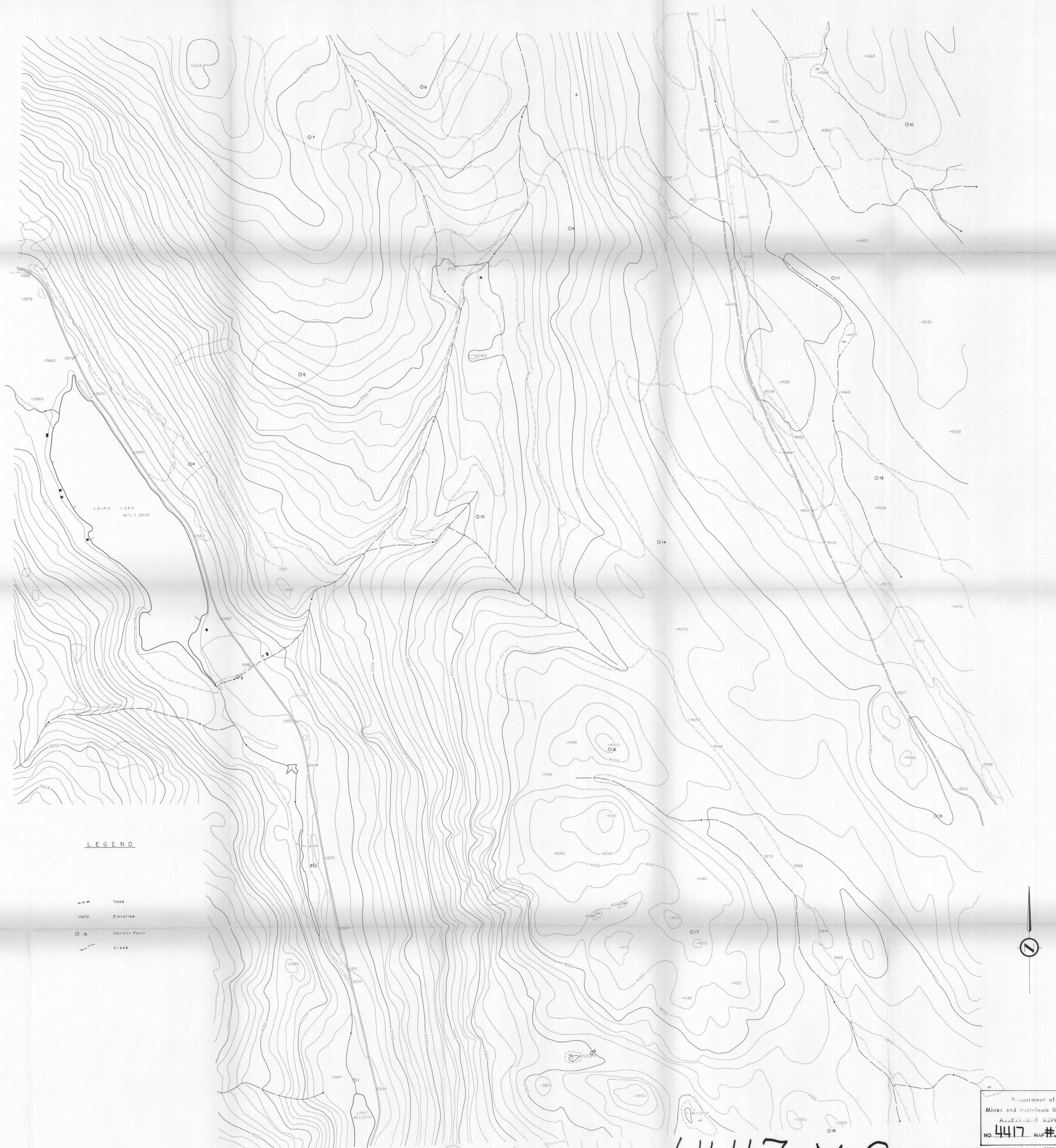
4417 M-2

Department of
 Mineral Resources
 ASSESSMENT REPORT
 NO. 4417 MAP #2



AALENIAN RESOURCES LTD.			
Laird Lake Property			
FAN & J CLAIM GROUPS			
SIMILKAMEEN MINING DIVISION, B.C.			
GRID MAP			
FAN 1-6, 35-42 & 55; NU 6-13, 25-28 & 39-48, & JE 21-24 CLAIMS			
		INTERPRETED BY: I.H. STORK	
EXPLORATION SURVEYS LTD.		DRAFTED BY: J.N.S.	
DATE: MAY 25, 1973		CHECKED BY: _____	
REVISIONS: _____		PROJECT No. 7303	
By: A. Hume		FILE: 1011	

To Accompany Property Preparation Report
 Date: May 24, 1973
 Similkameen Mining Division, B.C.
 By: A. Hume



LEGEND

- Road
- 2670 Elevation
- 16 Control Point
- Creek

C.M.F.H. 4417 M-3

Department of
Mines and Petroleum Resources
ASSESSMENT REPORT
NO. 4417 MAP #3

Photography flown in 1972 at an approx. scale of 1 inch = 5280 feet.

AALENIAN RESOURCES LTD.

LAIRD LAKE AREA

TOPOGRAPHIC MAP

Compiled by
MCELHANNAY SURVEYING & ENGINEERING LTD.
1200 West Pender St. Vancouver, B.C.

In accordance with Property Registration Report
dated 11/29/73
Surrendered Mining Division, B.C.
By: A. Hennessey Geologist

Fig. 3

SCALE	CONTOUR INTERVAL	DATE	JOB NO.	SHEET NO.
1" = 400'	50'	26 APR/1973	05982-0	1 of 1

AREA OF
POSSIBLE
INTRUSIVE

TEXTURAL TREND

PROBABLE FAULTS
OTHER LINEARS

4417M4

Department of
Mines and Petroleum
ASSESSMENT REPORT
4417 MAP #4

Photographs taken in 1972 at an aerial scale of 1 inch = 5280 feet
AALENIAN RESOURCES LTD.
LAIRD LAKE AREA
PHOTOMOSAIC
Compiled by
McELHANNY SURVEYING & ENGINEERING LTD.
1200 West Pender St. Vancouver, B.C.
SCALE: 1" = 400' DATE: 26 Apr 1973 SHEET NO: 05962-0 SHEET NO: 41