

4421-

PART 1
(OF 2)

GEOPHYSICAL REPORT

ON

MAGNETOMETER SURVEY

HI GROUP MINERAL CLAIMS

HEDLEY AREA

OSOYOOS MINING DIVISION

BY

A.W. Dean, P.Eng.

Department of
Mines and Petroleum Resources
ASSESSMENT REPORT

NO. 4421 MAP

Part A

CLAIMS: HI 1 to 40 inclusive

LOCATION: 8 miles northwest of Hedley, B.C.
49° 128° S.E.
N.T.S.: 92-H-8E

OWNER: John M. McAndrew

WORK BY: Ducanex Resources Limited

DATES: June 8 to June 11, 1973
June 18 to June 21, 1973

Vancouver, B.C.

June 21, 1973

TABLE OF CONTENTS

	<u>Page</u>
INTRODUCTION	1
LOCATION AND ACCESS	1
CLAIMS	1
GEOLOGY	2
MAGNETOMETER SURVEY	2
DISCUSSION OF RESULTS	3

APPENDIX A - STATEMENT OF COSTS

MAPS

#1A	FIG. 1	HI GROUP LOCATION MAP	following Page 1
#2A	FIG. 2	HI CLAIM GROUP 1" = 800'	Pocket
#3A	FIG. 3	MAGNETOMETER SURVEY 1" = 200'	Pocket

INTRODUCTION

A magnetometer survey was conducted on a portion of the H1 Group claims from June 8 to June 11, 1973. The survey was undertaken in an overburden covered area to determine the magnetic characteristics of bedrock that caused two high I.P. chargeability anomalies outlined by Anaconda American Brass Limited in 1968 (assessment report No. 1617). The field survey was conducted by D. Johnson, geologist and K. Allen, assistant under the general supervision of A.W. Dean, P.Eng. The data gathered and the results of the field work are discussed in the body of this report.

LOCATION AND ACCESS (Fig. 1)

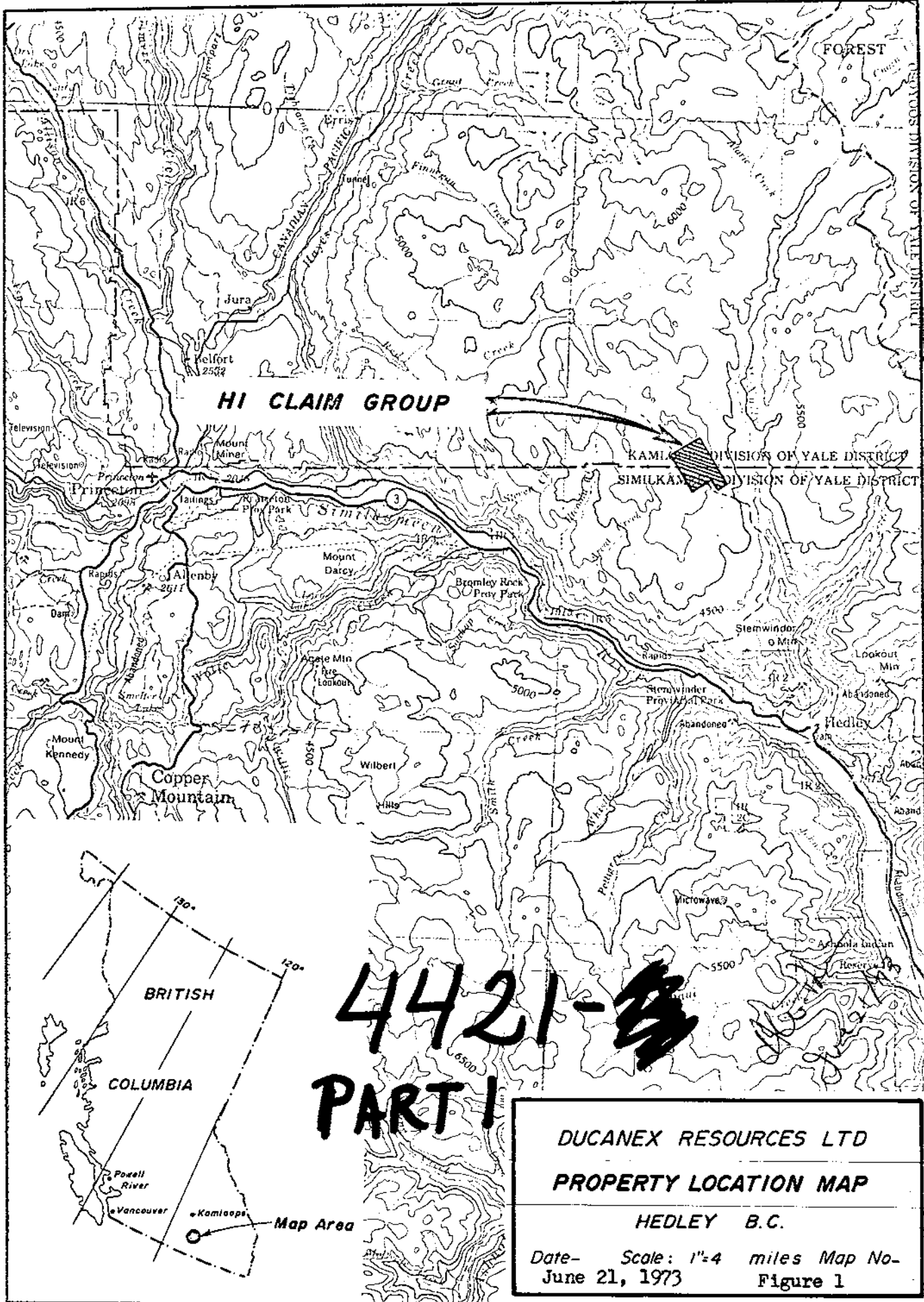
The centre of the H1 claims is located three miles west of McNulty Creek, some eight miles northwest of Hedley, B.C. The south end of the group can be easily reached by a forestry fire access road that leaves Highway No. 3 two miles west of Hedley.

CLAIMS

The H1 Group consists of a total of forty full-size, contiguous claims that were staked by the present owner, J.M. McAndrew in 1972. These claims cover the north-east portion of the J.M. claim group once held by Anaconda American Brass Limited until March 9, 1971.

Claim names, record numbers and recorded dates are listed below:

<u>Claim Name</u>	<u>Record Number</u>	<u>Record Date</u>
H1 No. 1 to H1 No. 40 inclusive	29323 - 29362 inclusive	July 7, 1972



4421-3
PART I

DUCANEX RESOURCES LTD
PROPERTY LOCATION MAP
HEDLEY B.C.
 Date- June 21, 1973 Scale: 1"=4 miles Map No- Figure 1

Full interest in the above claims is held by J.M. McAndrew of Surrey, British Columbia.

GEOLOGY

Government geological map No. 888A by H.M.A. Rice shows the Hi Group overlies a roof pendant of Triassic volcanic rocks (Nicola Group) within the Similkameen batholith (Coast Intrusions).

Outcrop within the survey area is scarce. Small outcrops of fine-grained andesite containing minor amounts of disseminated and fine line stringers of magnetite were observed at stations 118 E - 184 N and 129 E - 200 N. These outcrops lie within the 2000 gamma contour.

MAGNETOMETER SURVEY

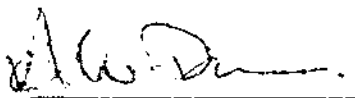
The survey was undertaken using a Scintrex MF-1 magnetometer which records the relative vertical intensity of the earth's field in gammas.

Picket lines spaced eight hundred feet apart previously established by Anaconda in 1968 (lines 200 N, 192 N and 184 N) were re-used for the survey. Additional chain and compass lines were made to establish an overall grid with lines spaced four hundred feet apart. Magnetometer readings were recorded at one hundred foot intervals on all lines with stations marked with red flagging. A more detailed grid was completed in the vicinity of 130 E, 196 N to try and determine a magnetic correlation with feldspar porphyry encountered in a packsack drill hole completed in 1970. The relative location of grid lines to claim boundaries is shown in Figure 2.

For survey control magnetometer readings were taken approximately every two hours at a base station located at 123 E - 192 N. All recorded magnetometer readings were subsequently corrected for diurnal variation and plotted and contoured as shown in Figure 3.

DISCUSSION OF RESULTS

- 1) The general north-south orientation of isogam contours corresponds with the general trend of the High chargeability anomalies detected by Anaconda.
- 2) The lack of outcrop in the area makes interpretation difficult however elongated areas outlined by 1500 gammas and less may indicate underlying acidic intrusives or silicified volcanic rocks. Such an area is indicated trending north-south through the centre of the survey area and again to the west centring on 106 E - 196 N, which approximately corresponds with a High I.P. chargeability anomaly detected by Anaconda.
- 3) A low anomaly (below 1250 gammas) open to west centred at 97 E - 192 N may indicate the close proximity of the Nicola coast intrusive contact.
- 4) Areas underlain by 2000 gammas and greater are believed underlain by Nicola volcanics with varying amount of disseminated magnetite.



A.W. Dean

Vancouver, B.C.

June 21, 1973

APPENDIX A

STATEMENT OF COSTS

The following cost statement is for work carried out by three Ducanex Resources Limited personnel on the Hi Group property belonging to J.M. McAndrew between June 8 and June 21, 1973.

The work consisted of the re-establishing and layout of compass and chain lines and magnetometer survey of 7.2 miles. Additional time was spent in Vancouver with report preparation by A.W. Dean and drafting by Global Drafting Services.

COSTS

Geological Engineer	1 day @ \$50.00/day	=	50.00	
Geologist	4 days @ \$34.60/day	=	138.00	
Assistant	4 days @ \$18.30/day	=	73.00	
Room and board,	\$8/man day, 9 man days	=	72.00	
Magnetometer rental (Geophysical Electronic Services)		=	150.00	
Transportation (Jeep rental 4 days @ \$17.20/day, plus fuel \$15.00)		=	84.00	
Report and map preparation:				
1 geological engineer 2 days @ \$50.00/day		=	100.00	
Drafting: Global Drafting Services		=	120.00	
				<u>\$787.00</u>

Declared before me at the *City*
of *Vancouver* in the
Province of British Columbia, this *29th*
day of *June* 1973, A.D.

[Signature]
A Commissioner of the Province of British Columbia or
A Notary Public in and for the Province of British Columbia.

SUB-RECORDING RECORDS

[Signature]
SUB-RECORDING RECORDS

C E R T I F I C A T E

I, A.W. Dean, of the City of Burnaby, in the Province of British Columbia, hereby certify as follows:

1. That I am a Registered Professional Engineer of the Province of British Columbia and reside at 5 North Springer Avenue, Burnaby 2, British Columbia.
2. That I am a graduate of Michigan Technological University with a Bachelor of Science in Geological Engineering, having practised my profession since 1958.
3. That I have no interest either directly or indirectly in the claims known as the Hi Group nor do I expect to receive any.



A.W. Dean, P.Eng.

Vancouver, B.C.

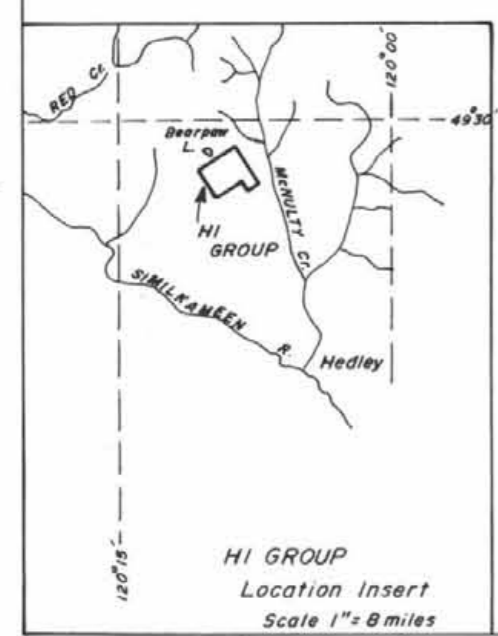
June 21, 1973



KAMLOOPS DISTRICT
SIMILKAMEEN DISTRICT

PART 1

4421 M2



- LEGEND**
Mineral Claim Name And Record Number Shown
- Swamp
 - Stream
 - Trail
 - Road

Department of
Mines and Petroleum Resources
ASSESSMENT REPORT
NO. 4421 MAP #2A

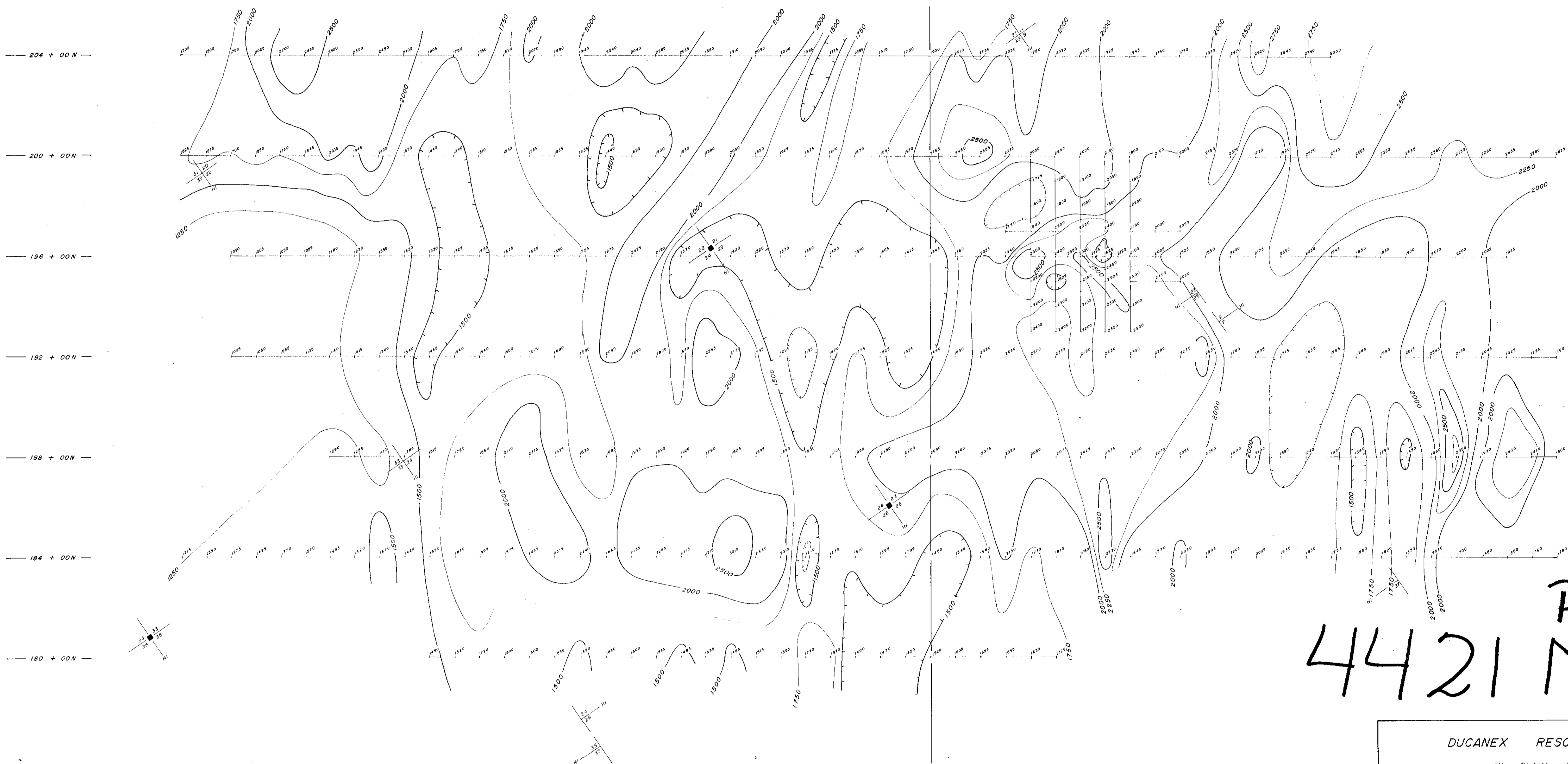
AW Dean
June 21/73

HI CLAIM GROUP
No 1 GROUP
OSOYOOS M.D. HEDLEY B.C.
TO ACCOMPANY GEOPHYSICAL REPORT
BY AW DEAN

800 400 0 800 1600 ft.
SCALE
Date - June 20 1973 Plate - Fig - 2



95 + 00E 100 + 00E 105 + 00E 110 + 00E 115 + 00E 120 + 00E 125 + 00E 130 + 00E 135 + 00E 140 + 00E 145 + 00E 150 + 00E



PART I
4421 M3
June 21/73
AWD

LEGEND
 — 500 gamma contour
 — 250 gamma contour
 ○ Magnetic depression
 ■ Claim post

DUCANEX RESOURCES LTD. Department of
 Mines and Petroleum Resources.
 HI CLAIM GROUP ASSESSMENT REPORT
 OSY005 MINING DIVISION
 HEDLEY B.C. NO. 4421 MAP #3A

MAGNETOMETER SURVEY
 CONTOURS OF RELATIVE VERTICAL INTENSITY
 IN GAMMAS

SCALE 1:2000
 200 100 0 200 400

Map No - Fig. 3
 To Accompany A Report By -
 A.W. Dean P.Eng. Dated - June 21 1973