

92F/11,14

LINE CUTTING REPORT

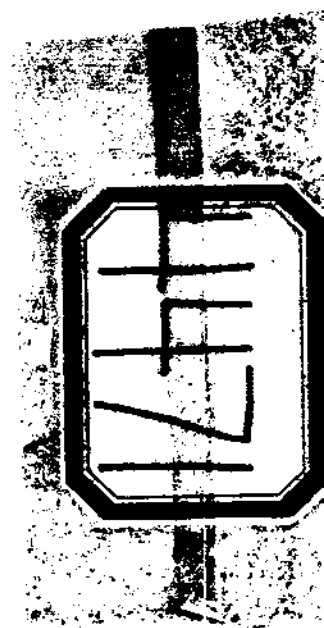
CAM MINERAL CLAIMS

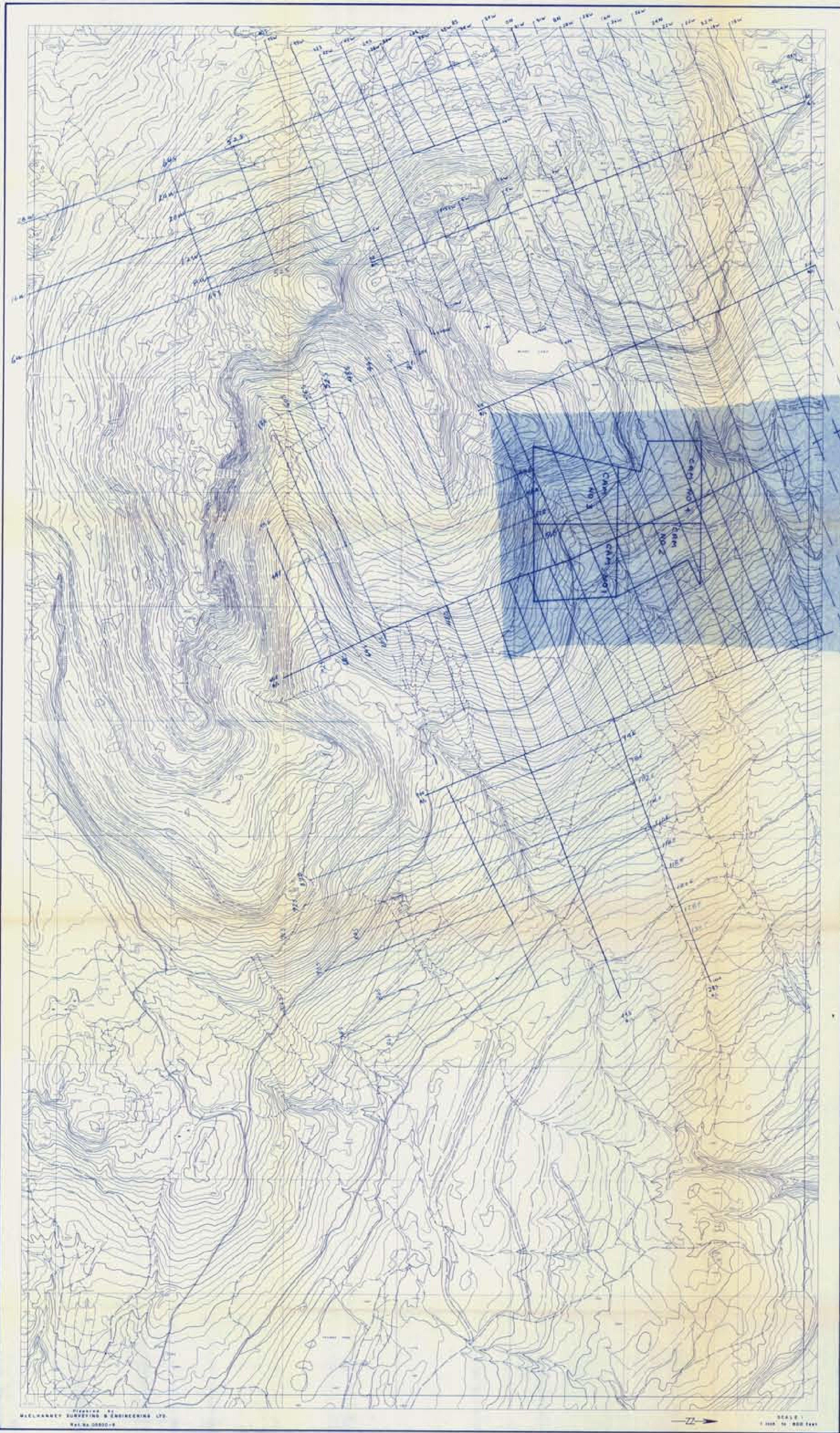
OWNER: MT. WASHINGTON COPPER CO. LTD.

IMPERIAL OIL LIMITED

NANAIMO MINING DIVISION

WORK DONE: OCT. 23-26/72





——— checked lines
 - - - unchecked lines

1972 LINECUTTING MAP

MT. WASHINGTON

1 inch = 800 feet

Department of
 Mines and Petroleum Resources
 ASSESSMENT REPORT
 NO. 4471 MAP #1

→ N

4471-M1

92F/11,14