

4475

WD MINING CLAIMS
NICOLA MINING DIVISION
ASPEN GROVE AREA, B.C.

Longitude $120^{\circ} 38'$
Latitude $49^{\circ} 52'$

FOR

92H/15E

WD

GROVE EXPLORATIONS LTD. (N.P.L.)
VANCOUVER, B. C.

BY

GORDON P.E. WHITE & ASSOCIATES LTD.
1785-22 STREET
WEST VANCOUVER, B. C.

JANUARY 30, 1973

Department of	
Mines and Petroleum Resources	
ASSESSMENT REPORT	
NO. 4475	MAP

TABLE OF CONTENTS

	<u>Page</u>
INTRODUCTION	1
CLAIMS	1
LOCATION AND ACCESS	2
GEOLOGY	2
GEOCHEMICAL SURVEY	3
CONCLUSIONS AND RECOMMENDATIONS	3
CERTIFICATE	

#1 CLAIM AND DRILL LOCATION MAP

Scale: 1 inch = 2640 feet

#2 Geochemical Soil map

INTRODUCTION

A preliminary claim survey, grid lines for control, and geochemical soil sampling and assaying has been carried out by Grove Explorations Ltd. on their WD claims near Aspen Grove. The ensuing report is a review of the results of the programme and recommendations for future work.

Reference has been made to a report on the WD claims by R. Wolfe dated June 26, 1972, and to the claim survey and geochemistry by Amex Exploration Services. GSC Memoir 243 and GSC Map 888A by H.M.A. Rice were also utilized.

The property was not examined in the field by the writer; the position of the claims on the accompanying map as indicated by the preliminary claim survey are believed to be reliable.

CLAIMS

The preliminary claim survey was recommended because there did appear to be overstaking. Prior to the survey, the original 49 claims were WD 3-32 inclusive, WD 33-39 inclusive, and WR 29 and 30. The survey showed 29 claims or part claims having an estimated total 880 acres. Of the 29 claims, WD's 4,6,19,20,21,22,23,24 and 33 are close to full size claims, while the remainder have been reduced physically in size by previous staking.

The claims as they now are placed are as follows:

<u>Claim</u>	<u>No. of Claims</u>	<u>Recording Dates</u>
WD 3-6 Inclusive	4	June 9, 1972
WD 19-26 Inclusive	8	June 9, 1972
WD 28-30 Inclusive	3	June 9, 1972
WD 32	1	June 9, 1972
WD 33-45 Inclusive	<u>13</u>	June 23, 1972
	29	

LOCATION AND ACCESS

The WD claims lie 5 miles south of Aspen Grove, B.C., parallel to and generally east of the Princeton-Merritt Highway.

The claims are easily accessible by roads which traverse the claims; the claims are at a relatively low elevation.

GEOLOGY

GSC Map 888A, Rice, show that the claims are underlain by the Nicola Group of Upper Triassic age and to be traversed in a general north south direction by the postulated Allison Fault. The Nicola Group is comprised of "lava argillite, tuff, limestone; chlorite and sericite schist" (Rice, 1944).

Recent copper mineral showings have been uncovered in the Aspen Grove area. One hypothesis of metallic mineral accumulation in this area, is that the copper minerals were deposited with Nicola volcanics and volcanic breccias. Later Coast Intrusions may have been instrumental in re-depositing copper along faulted zones.

Outcrops are limited on the WD claims.

GEOCHEMICAL SURVEY

Approximately 13.3 miles of cross lines and base lines were placed on the central part of the WD group. From this chain and control grid, 315, B' horizon soil samples were collected and assayed for copper. Samples were taken 200 feet apart on lines spaced 400 feet. The dried soil was crushed to minus 80 mesh, digested using $HClO_4 + HNO_3$, and the copper determined in ppm using the atomic adsorption method.

Cu 50 ppm is near background over the claims; no continuous anomalous conditions were encountered. Swampy regions showed higher readings one being 395 ppm. Although the higher readings were usually isolated, it might be wise to check some of them in the field.

CONCLUSIONS AND RECOMMENDATIONS

The WD claims are in a geologically favourable environment. Soil sampling does not appear to have indicated any anomalous conditions over

reasonable areas.

A continued programme of exploration would be to check anomalous copper readings in the field, and at the same time to search for and map any rock outcrops.

An alternative method of evaluation to geophysical surveying, would be to penetrate the overburden searching for rock alteration and/or mineralization. This could be carried out using a truck mounted water drill rig. It is felt that the information gathered by mapping and geochemical assaying of chip samples returned would be fairly conclusive as to any mineral potential.

A cost estimate of such a programme would be as follows:

Preliminary field examination and map preparation	\$ 2,000.00
Travel and field expense	500.00
Pattern water hole drilling of central claims at 1/4 mile centers, estimated 80 ft average depth x 20 holes x \$10/ft	16,000.00
Supervision of drilling and sample catching	1,000.00
Assaying	100.00
Engineering, Alteration study	<u>2,400.00</u>
Total	\$ 22,000.00

Further funds would be required to expand the programme or to diamond drill, if interesting results were obtained.

GORDON P.E. WHITE & ASSOCIATES LTD.

January 30, 1973


Gordon P.E. White, P. Eng.

CERTIFICATE

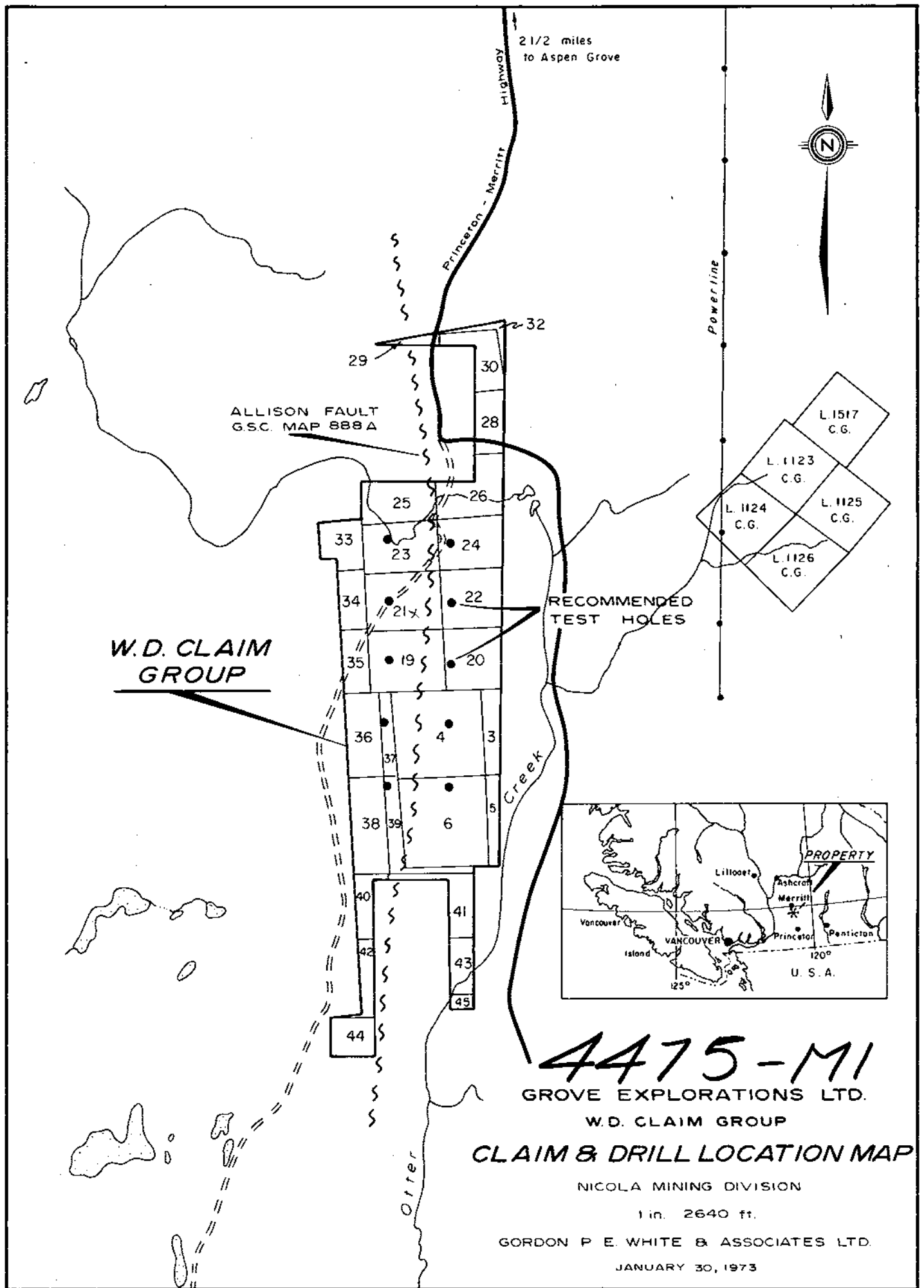
I, GORDON PATRICK EARL WHITE, of the Municipality of West Vancouver, in the Province of British Columbia, HEREBY CERTIFY:

1. THAT I am a registered Professional Engineer in the Province of British Columbia.
2. THAT I am a graduate of the University of New Brunswick with a degree of Bachelor of Science, geology major (1953).
3. THAT I am a Consulting Geologist, with offices at 1785-22 Street, West Vancouver, B. C.
4. THAT I have not visited the property discussed in this report.
5. THAT I have not checked the claim staking but have reason to believe from a preliminary claim survey that this has been carried out.
6. THAT I have practised as a geologist for more than 19 years, examining and reporting on properties and mines in North America and Africa.
7. THAT I have no interest, direct or indirect in any Company acquiring or intending to acquire control, nor do I expect to have any interest in Grove Explorations Ltd. Nor do I have any interest in the claims, direct or indirect, referred to in this report.

Dated at West Vancouver, this 30th day of January, 1973.



Gordon P.E. White, P. Eng.



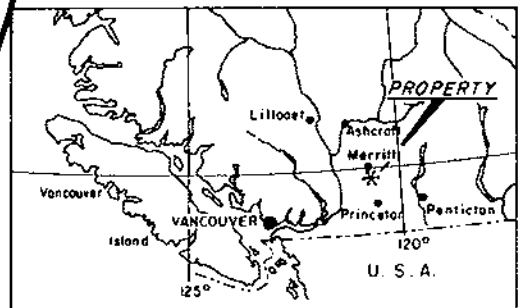
2 1/2 miles
to Aspen Grove



ALLISON FAULT
G.S.C. MAP 888 A

**W.D. CLAIM
GROUP**

RECOMMENDED
TEST HOLES



4475-M1

GROVE EXPLORATIONS LTD.

W.D. CLAIM GROUP

CLAIM & DRILL LOCATION MAP

NICOLA MINING DIVISION

1 in. = 2640 ft.

GORDON P. E. WHITE & ASSOCIATES LTD.

JANUARY 30, 1973

Department of
Mines and Petroleum Resources
ASSESSMENT REPORT

NO. 4475 MAP #1

September 1, 1972

Grove Exploration Ltd., (NPL)
 211 - 717 West Hastings Street,
 Vancouver, B.C.

Lab 907G

Geochemical analysis for copper

Mesh Size: - 80
 Analytical Method: Atomic Absorption
 Digestion Method: $\text{HClO}_4 + \text{HNO}_3$

Sample Marked:	Copper ppm	Sample Marked:	Copper ppm	Sample Marked:	Copper ppm
4N 2W (creek bed)	no sample	4S 8E	65	8S 4W	41
2E	78	10	60	6	43
4	50	12	48	8	42
6	55	14	53	10	45
8	55	16	48	8S 12W	39
10	40	18	62	12S 2E	49
12	75	20	72	4	64
14	58	22	67	6	47
16	65	24E	64	8	36
18	72	2W	65	10	50
20	80	4	51	12	46
22	69	6	39	14	57
4N 24E	142	8	32	16	58
0 2E	53	10	26	18	37
4	46	4S 12W	32	20	42
6	58	8S 2E	48	22	46
8	60	4 creek bed	no sample	24E	57
10 (creek bed)	no sample	6 creek bed	no sample	2W	50
12	50	8	77	4	51
14	47	10	45	6	55
16	59	12	56	8	49
18	75	14	48	12S 10W	42
20	64	16	56	16S 2E	52
22	65	18	49	4	53
0 24E	75	20	47	6	58
4S 2E creek bed	38	22	40	8	53
4	57	24E	48	10	48
4S 6E	81	RS 2W	45	16S 12E	52

Sample Marked:	Copper ppm	Sample Marked:	Copper ppm	Sample Marked:	Copper ppm
16S 14E	50	24S 2W	61	36S 6E swamp	no sample
16	51	4	59	8	47
18	58	6	61	10	44
20	52	8	36	12	41
22	44	24S 10W	40	14	48
16S 24E	40	28S 2E	55	16	63
16S 2W	67	4	71	18	61
4	62	6	no sample	20	48
6	65	8	76	22	38
8	50	10	66	36S 24E	62
16S 10W	48	12	59	36S 2W	63
20S 2E	42	14	62	4	55
4	62	16	63	6	60
6	51	18	53	36S 8W	51
8	71	20	59	40S 2E	53
10	70	22	67	4 swamp	no sample
12	71	28S 24E	90	6 swamp	no sample
14	56	28S 2W	125	8	56
16	71	4	80	10	50
18	65	6	60	12	48
20	63	8	49	14	56
22	52	28S 10W	47	16	60
20S 24E	63	32S 2E	54	18	56
20S 2W	65	4	61	20	52
4	48	6 swamp	no sample	22	35
6	71	8	45	40S 24E	36
8	59	10	66	40S 2W	57
20W 10W	46	12	68	4	64
24S 2E	55	14	65	6	85
4	51	16	61	40S 8W	66
6	65	18	47	44S 2E	68
8	60	20	54	4	78
10	43	22	50	6 swamp	no sample
12	65	32S 24E	43	8	46
14	55	32S 2W	45	10	54
16	57	4	53	12	45
18	55	6	72	14	52
20	63	32S 8W	45	16	69
22	50	36S 2E	42	18	50
24S 24E	51	36S 4E	55	44S 20E	62

Grove Exploration Ltd., (NPL)
Lab 907G

Sample Marked:	Copper ppm	Sample Marked:	Copper ppm	Sample Marked:	Copper ppm
44S 22E	62	52S 20E	69	60S 16E	65
24	37	22	59	16	38
26	outcrop rock sample	24	51	18	43
28	45	26	58	20	36
30	47	28	47	22	51
32	40	30	53	24	52
44S 34E	56	32	61	26	shallow rock base 127
44S 2W	51	52S 34E	48	28	49
4	55	52S 0+00W	58	30	79
6	79	2W	56	32	outcrop rock sample
44S 8W	47	4	55	60S 34E	swamp no sample
48S 2E	48	52S 6W	46	60S 2W	swamp no sample
4	63	56S 0+00	swamp no sample	4	swamp no sample
6	47	2E	swamp no sample	60S 6W	60
8	62	4	swamp no sample	64S 00	swamp no sample
10	45	6	52	2E	swamp no sample
12	47	8	49	4	75
14	54	10	43	6	71
16	62	12	63	8	71
18	42	14	70	10	71
20	41	16	62	12	93
22	37	18	66	14	66
24	55	20	70	16	140
28	50	22	44	18	57
30	45	24	55	20	177
32	55	26	61	22	55
48S 34E	40	28	44	24	37
48S 2W	55	30	54	26	55
4	57	32	112	28	83
6	65	56S 34E	52	32	395
48S 8W	47	56S 2W	swamp no sample	64S 34E	old swamp with dead fall no sample
52S 2E	swamp no sample	4	swamp no sample	64S 2W	swamp no sample
4	swamp no sample	56S 6 W	67	4	swamp no sample
6	swamp no sample	60S 00	77	64S 6W	48
8	53	2E	swamp no sample	B/L "0" 0+00	83
10	50	4	swamp no sample	2W	39
12	47	6	58	4N	40
14	58	8	38	2S	72
16	65	10	63	4	51
52S 18E	61	60S 12E	54	B/L "0" 6S	45

Grove Exploration Ltd., (NPL)
Lab 907G

Sample Marked:	Copper Open
B/L "O" 88	55
10	52
12	70
14	86
16	57
18	70
20	59
22	65
24	66
26	56
28	63
30	49
32	58
34	61
36	50
38	50
40	51
42	51
44	48
46	52
48	65

B/L "O" 508 swamp no sample

55 ← arithmetic average
55
1175
21
55

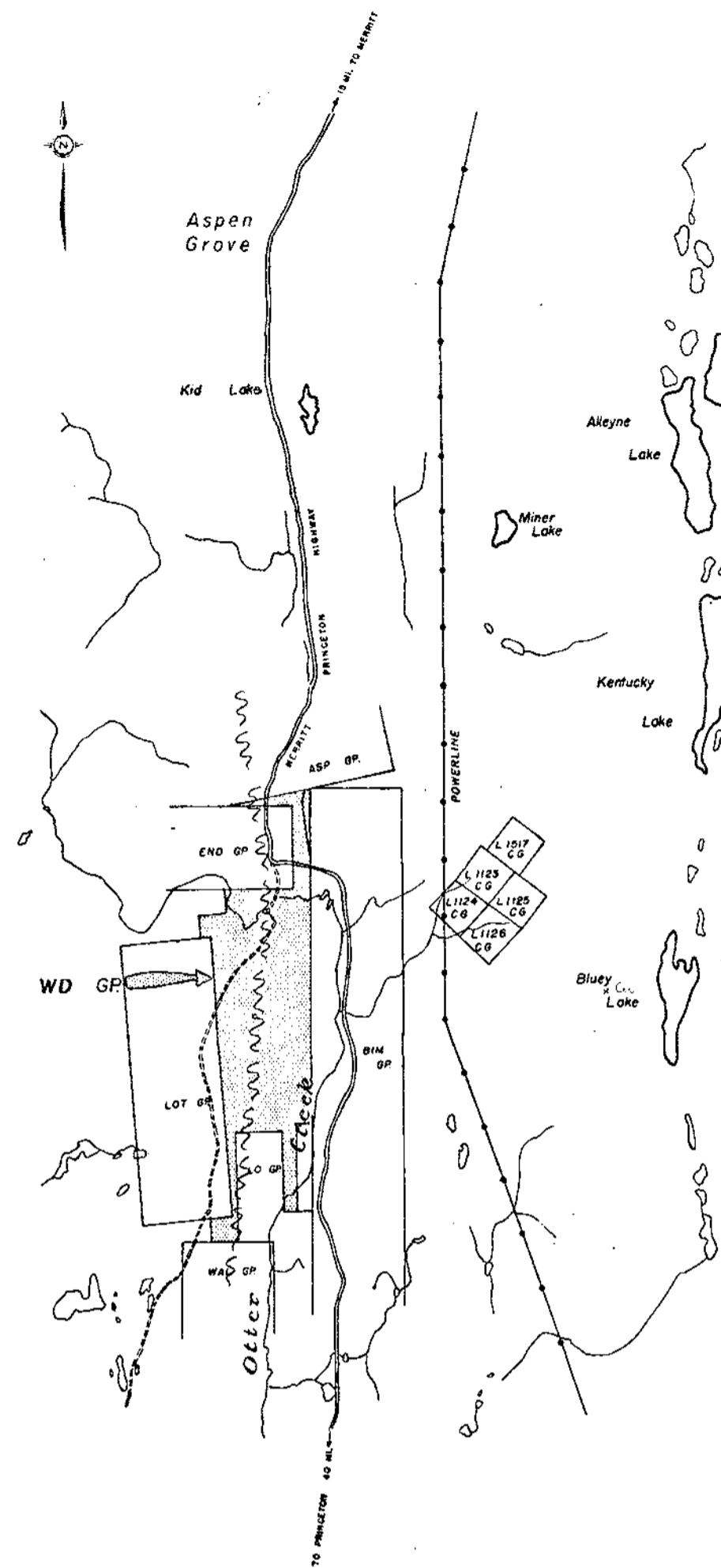
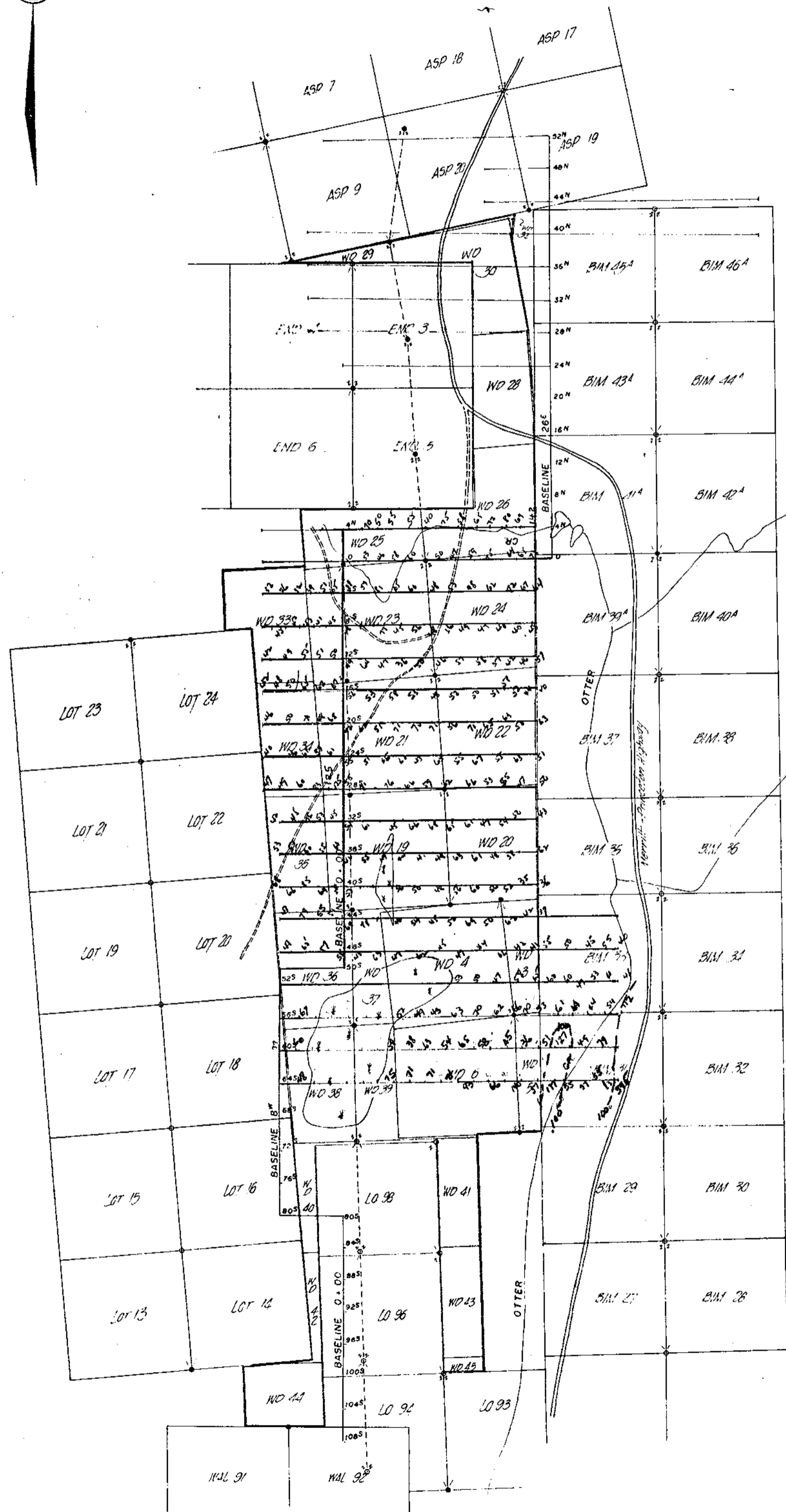
Yours truly,

CREST LABORATORIES (B.C.) LTD.,

F.C. Burgess

F.C. Burgess

Chief Assayer



REF. MAP : 92H/15E
SCALE : 1/2 Mile = 1 Inch

**"WD" GROUP,
GROVE EXPLORATIONS LTD.**
Aspen Grove Area, Nicola Mining Division

**4475
M2**

Scale : 1" = 600'

Background = 50 ± = 58 with some areas
Threshold = 80 ±
Anomalies = >100 ±