

4477

GEOLOGICAL, GEOCHEMICAL AND GEOPHYSICAL
INVESTIGATIONS ON THE KAZA COPPER PROPERTY
(Bronco, Burn, Hot, Ice, Logan, Mag, Robert Claims)

Omineca Mining District

Latitude : 55° 58'N.

Longitude: 126° 20'W

Covering the period
May 15 - May 31, 1973

By:

P. M. Dean

R. E. G. Davis, P. Eng.

for

KAZA COPPER LIMITED

Department of	
Mines and Petroleum Resources	
ASSESSMENT REPORT	
NO. 4477	MAP.....

TABLE OF CONTENTS

	<u>Page</u>
Introduction.....	1
Location Map (Figure 1)	
List of Claims	2
Geology	3
Mineral Deposits and Alteration.....	7
Geochemistry	9
Magnetic Survey	11
Summary and Conclusions	12

LIST OF FIGURES

#1	Figure 1 - Claim Location Map	1": 4 miles
#2	Figure 2 - Claim Map	1": 1320 ft.
#3	Figure 3 - Grid Geology	1": 400 ft.
#4	Figure 4 - Regional Geology	1": 1320 ft.
#5	Figure 5 - Grid Geochem	1": 400 ft.
#6	Figure 6 - Regional Geochem	1": 1320 ft.
#7	Figure 7 - Grid Magnetics	1": 400 ft.

Appendix I - Summary of Costs

Appendix II - Affidavit supporting Summary of Costs

Appendix III- Vouchers supporting costs

DYNASTY EXPLORATIONS LIMITED

330 MARINE BUILDING
355 BURRARD STREET
VANCOUVER 1, B.C.

GEOLOGICAL, GEOCHEMICAL AND GEOPHYSICAL INVESTIGATIONS ON THE KAZA COPPER PROPERTY (Bronco, Burn, Hot, Ice, Logan, Mag, Roberta Claims)

INTRODUCTION

The Kaza Copper Prospect, consisting of 102 contiguous claims lies 4 miles S-SW of Kaza Lake and about 100 air miles north-east of Smithers (Figure 1). Access to the property is by float plane to Kaza Lake and then by tote road to the main showing area, or by helicopter direct from Smithers. The claims were staked to cover strong linear gossan zones developed on Takla Group volcanics of Jurassic age. Copper, silver and gold mineralization occurs sporadically throughout the gossan zones, along with abundant pyrite.

Exploration work done on the property in the past included cat trenching, diamond drilling and plane table mapping of an area 1000 feet wide and 2000 feet long in the immediate vicinity of the showings.

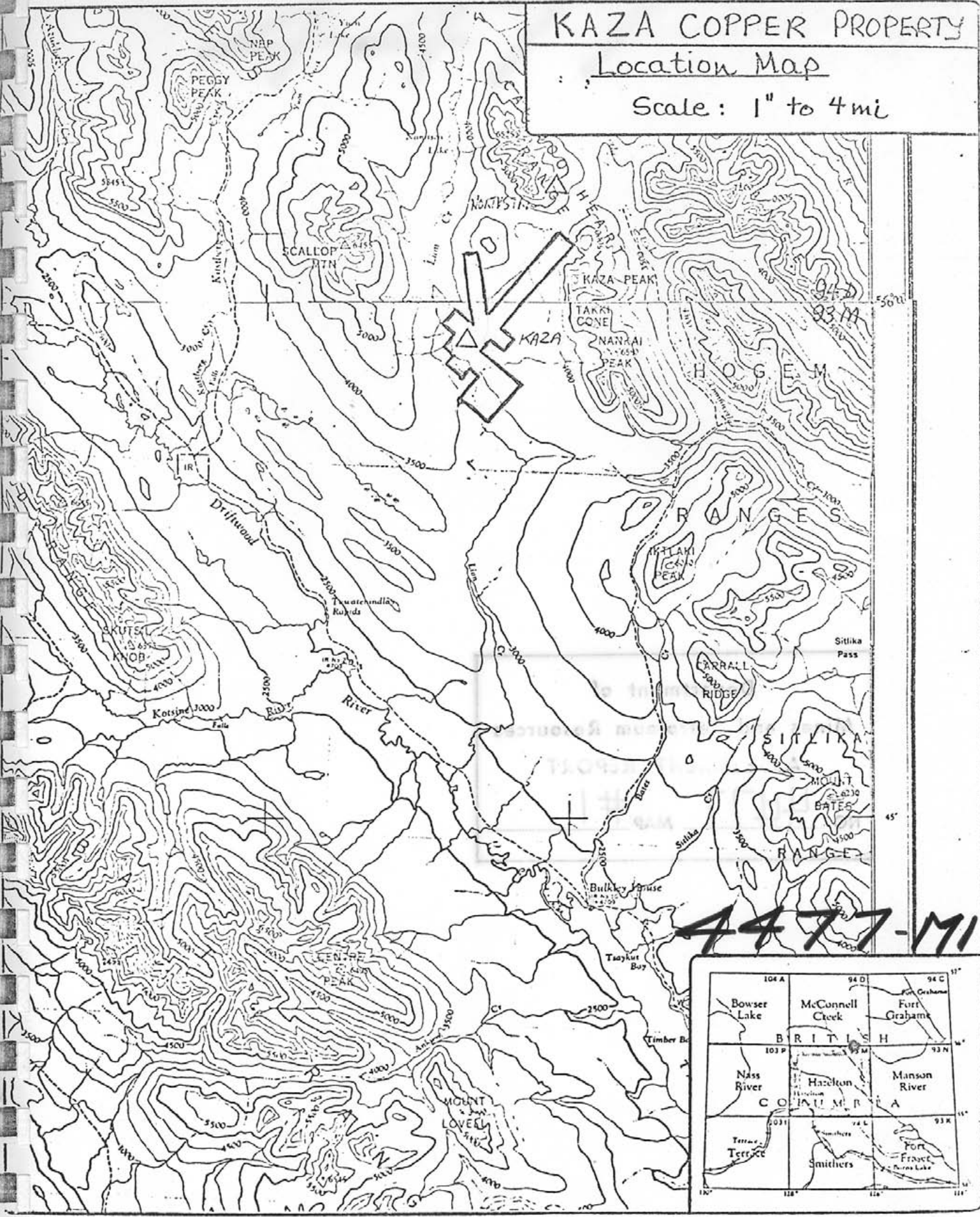
Between May 15th and May 31st, Dynasty Explorations carried out geochemical sampling, geologic mapping and a magnetometer survey on the claim group. A flagged chain and compass grid was used for control over most of the claims and an enlarged print of the government air photograph was used for control on parts of the claim group not covered by the grid. The work was carried out by a crew of four, including a geologist-party chief and three field assistants.

Figure 1

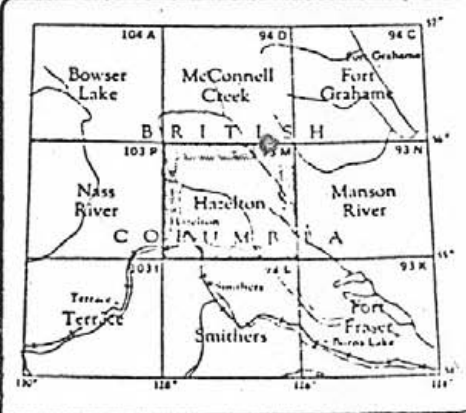
KAZA COPPER PROPERTY

Location Map

Scale: 1" to 4 mi



4477-171



LIST OF CLAIMS

<u>Claim Name</u>		<u>Record Number</u>	<u>Expiry Date</u>
Bronco	1-34	116243-116276	September 22, 1973
Burn	1-4	50983-50986	June 26, 1973
Cat	1-4	60735-60738	July 12, 1974
Fire	1-4 11-12	50987-50990 50997-50998	July 26, 1978
Hot	1-6 7-12	111768-111773 116235-116240	June 20, 1973 September 22, 1973
Ice	1-16	117742-117757	October 23, 1973
Logan	1-9 10-11	115911-115919 116241-116242	August 31, 1973 September 22, 1973
Mag	5-12, 14	111774-111782	June 20, 1973
Roberta	1-6	112977-112982	July 28, 1973

GEOLOGY

The Kaza Copper claims are underlain by rocks of Mesozoic and Tertiary age. The oldest rock types occurring on the claims are volcanics and sediments of the Takla Formation of Upper Triassic to Jurassic age. Overlying the Takla Formation, probably unconformably, are conglomerates and sandstones of the Sustut Formation of Upper Cretaceous to Paleocene age. The youngest rocks encountered on the claims are acid intrusions which include a great variety of small dikes and a possible rhyolite flow or large sill which I am tentatively correlating with the Kastberg Intrusions. These intrusive dikes, early Tertiary in age, were found cutting rocks of both the Sustut and the Takla Formations.

Rocks of the Takla Formation underly most of the claim group area and are the host rocks for the mineral deposits. These rocks were tentatively divided into a lower, predominantly volcanic, unit consisting of andesite flows, tuffs and breccias and an upper sedimentary unit consisting of siltstones, sandstones and chert-pebble conglomerate. Some of the sandstone members are clearly derived from the underlying volcanics.

Limestone lenses and blobs, often containing coral and bryozoon fossils, occur between flows in some parts of the lower member of the Takla. One such limestone lens, close to the main showing area, is weakly mineralized with chalcopyrite and is abundantly stained with malachite.

At least four recognizable variations in rock type occur in the volcanic part of the Takla Formation. The most distinctive type of flow rock found on the claims is a porphyritic andesite with radiating clusters of white plagioclase phenocrysts up to one-half inch long, set in a dark green matrix. This is

the main rock type close to the showings and probably on the claims as a whole. Nearly as abundant, and also occurring close to the showings, is a darker green flow rock, probably still an andesite, which typically contains small phenocrysts of hornblende and of green pyroxene and also small, chunky plagioclase phenocrysts up to 3/16" long. Other variations include fine-grained to aphanitic dark green rocks, probably derived from tuffs, which outcrop at several places on the claims and pyroclastic breccias and crystal tuffs which we found only south of Kaza Creek, on the southern boundary of the claims.

The sedimentary part of the Takla Formation appears to overly the volcanics conformably and is well exposed in a canyon of Kaza Creek, where limy and fossiliferous sandstones in 6 inches to 2 ft. thick beds overly at least 100 ft. of brown siltstone. Fossils occurring in the sandstone in the canyon are mainly pelecypods with occasional pieces of carbonized wood. Elsewhere on the claims were found limy sandstone float boulders with pelecypod, gastropod, brachiopod and coral fossils. One outcrop of red chert-pebble conglomerate occurs on the claims. This outcrop lies close to andesite outcrops but the contacts are under overburden.

Outcrops of the Sustut Formation were only found west of Lion Creek. Lithologies present include conglomerate with quartz and granite clasts and sandstone.

Dikes of Felsic composition occur widely over the claims and in general are clearly related to north-south trending faults. Most are a few feet to a few tens of feet in thickness and appear to dip steeply. Compositions present include quartz porphyries, K-spar porphyries and fine-grained siliceous Felsite.

These dikes are abundant close to the mineral showings but there is no obvious relationship between the dikes and the mineralized veins. A rhyolite flow or large sill with poorly developed columnar jointing occurs on the west fringe of the claim group west of Lion Creek.

TABLE OF FORMATIONS

TERTIARY	Early Tertiary	5b	Rhyolite flow or sill
	Kastberg Intrusions	5a	Porphyritic and non-porphyritic acid dikes of various types
MESOZOIC	Upper Cretaceous to Paleocene	4b	Medium to coarse grained buff sandstone
	Sustut Formation	4a	Polymictic conglomerate with quartz and granite cobbles
	Upper Triassic and Jurassic	3c	Chert pebble conglomerate
		3b	Fossiliferous, limy sandstone
		3a	Massive dark brown siltstone
		2	Fossiliferous limestone lenses within units la and lc
	Takla Formation	1d	Pyroclastic breccias and crystal tuffs
		1c	Feldspar porphyry andesite
		1b	Aphanitic to fine-grained tuff or andesite
		1a	Hornblende porphyry andesite

MINERAL SHOWINGS AND ALTERATION

The mineralization of the Kaza claims is clearly epigenetic, is related to north-south trending faults and is accompanied by three distinctive types of alteration. The main mineralized showings occur as linear zones of hornblende-sulphide rock which conform to topographic depressions. These hornblende rocks, which were described by Riensbakken as "hornblendite dikes", are probably skarns developed in the volcanics along zones of fracturing. The sulphide component of these mineral zones consists of pyrite mainly, with minor chalcopryrite, bornite, sphalerite and magnetite. Sulphide abundance varies from about 5% to nearly massive. The two main hornblende skarn zones are a few feet wide and outcrop intermittently over lengths of several hundred feet; they appear to dip steeply.

Patchy exposures of a distinctively different type of skarn, consisting of epidote, calcite and minor pink garnet, occur in the area of the main showings. These skarns also are mineralized with pyrite and chalcopryrite and probably developed in more calcite-rich parts of the volcanics.

The following assay values were obtained from chip samples taken across the best exposed parts of the main skarn showings:

<u>Number</u>	<u>Description</u>	<u>Cu</u> (%)	<u>Au.</u> (oz/ton)	<u>Ag.</u> (oz/ton)
3-D-17	Chip sample across 6½ ft. of hornblende-sulphide skarn	0.20	0.004	0.05
3-D-26	Chip sample across 13 ft. of hornblende-sulphide skarn	0.88	0.45	0.37
3-D-28	Grab sample of epidote-calcite-garnet-sulphide skarn	0.22	0.010	0.08

<u>Number</u>	<u>Description</u>	<u>Cu</u> (%)	<u>Au</u> (oz/ton)	<u>Ag</u> (oz/ton)
3-D-29	Chip sample across 9 ft. of epidote-calcite-garnet skarn with massive sulphide bands	1.01	0.040	0.34
3-D-30	Chip sample across 6 ft. of epidote-calcite-sulphide skarn with at least 50% sulphides.	1.39	0.071	0.41
3-D-32	Chip sample across 5 ft. of hornblende-sulphide skarn with 30% sulphides	0.28	trace	0.28

Where possible, these chip samples were taken perpendicular to the strike of the mineralized zones but the lengths of samples represent horizontal or surface distance, not true widths of mineralization. The samples are representative of the best mineralized sections where bedrock is exposed.

Minor amounts of chalcopyrite and bornite occur in small quartz-orthoclase-epidote veinlets, both near the main showings and elsewhere on the claims. These small mineralized veins are probably of no economic significance.

Chalcopyrite and bornite also occur sparsely disseminated through a limestone lens that outcrops in the vicinity of the main showings.

GEOCHEMISTRY

Soil sampling was the only geochemical technique used on the Kaza Property. Samples were taken at intervals of 200 ft. along all grid lines and at 200 ft. and 500 ft. spacing on reconnaissance lines. A grub hoe was used to obtain samples from the B or C soil horizon. On most of the claim group there is a well developed soil profile and good samples could be obtained with no difficulty.

The samples were air dried in kraft paper bags then were shipped for analysis to Acme Analytical Laboratories, 6455 Laurel Street, Burnaby 2, B.C. The minus 80 mesh fraction of the samples was analyzed using an atomic absorption instrument following a "total extraction" digestion in perchloric acid. A total of 650 samples were analyzed for copper. The results have been plotted at a scale of 1 inch to 400 ft. (Figure 5).

The results clearly outline the two vein zones in the main showing area, which have produced a strong copper anomaly 3800 ft. long and about 1500 ft. wide, containing peak values of 30 to 100X background. Another smaller anomaly which occurs 1200 ft. to the south of the main showings lies in swampy ground at the base of the hill on which the showings occur and is probably hydromorphic in origin.

Small anomalous zones extending over a few adjacent samples occur at several other places on the grid area but none are sufficiently large in extent or high in magnitude to warrant further investigation. One series of weak anomalies 2000 ft. east of the main showings trends parallel to the known veins for a distance of nearly 5000 ft. and may indicate the presence of another mineralized zone. None of the samples in this second anomalous zone contain as much copper as the samples taken in the vicinity of the main showings.

Reconnaissance soil samples were taken along Kaza Creek, on the Roberta claims west of Lion Creek, and on the Ice claims north of the gridded area. Two anomalous samples 500 ft. apart, with copper contents of 1400 and 630 ppm, occur on the Ice claims, along with several other weakly anomalous values. None of the samples taken on Kaza Creek or on the Roberta claims were anomalous. The reconnaissance sample locations and the copper content in ppm are shown in Figure 6.

More soil sampling should be done around the most anomalous samples on the Ice claims to determine more exactly the source and magnitude of the anomaly. None of the other anomalies on the property appear to be large enough or intense enough to warrant any further work.

MAGNETIC SURVEY

An attempt was made to carry out a magnetic survey on the property using a Sharpe MF-2 fluxgate magnetometer. The survey could not successfully be completed, however, because of frequent magnetic storms during the early part of the field work and because of malfunctioning of the instrument during the last few days. The values obtained over the main showing area, the only part of the grid completed, are reliable and reveal that the magnetic intensity varies erratically over short distances. This variation in values undoubtedly results from the presence of magnetite which occurs within and around some of the mineralized zones.

Because of the association of magnetite with some of the mineralization, additional magnetic survey coverage could possibly have some value in locating or tracing mineralized zones in overburden-covered areas. However, any future attempt to complete a magnetic survey of the property must take into account the very narrow widths of the known mineralized zones. Instrument readings would have to be taken at intervals of 5 or 10 feet to be certain of not missing a vein. It is doubtful if it would be practical to carry out a survey that detailed, except over very small areas.

SUMMARY AND CONCLUSIONS

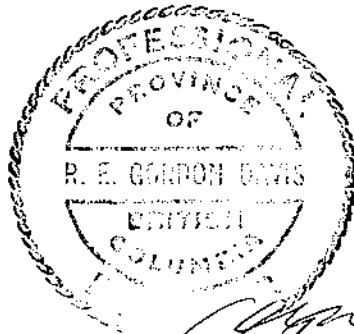
1. The known showings on the Kaza claims appear to be of the vein-type and are related to N-S trending faults. Widths are generally less than 5 feet and grades obtained from chip samples did not contain economic concentrations of copper, silver or gold.
2. Thorough geochemical sampling of the property failed to discover any significant geochemical anomalies which are not directly related to the known mineralized area. Some additional sampling is warranted on the Ice claims, where two reconnaissance soil samples were anomalous in copper.
3. The northern part of the Bronco claims, close to Kaza Lake, could not be examined due to the heavy snow cover at the time the field work was being done.
4. It is recommended that Dynasty should do no further work on the claims and that its option should be allowed to lapse.

Respectfully submitted,

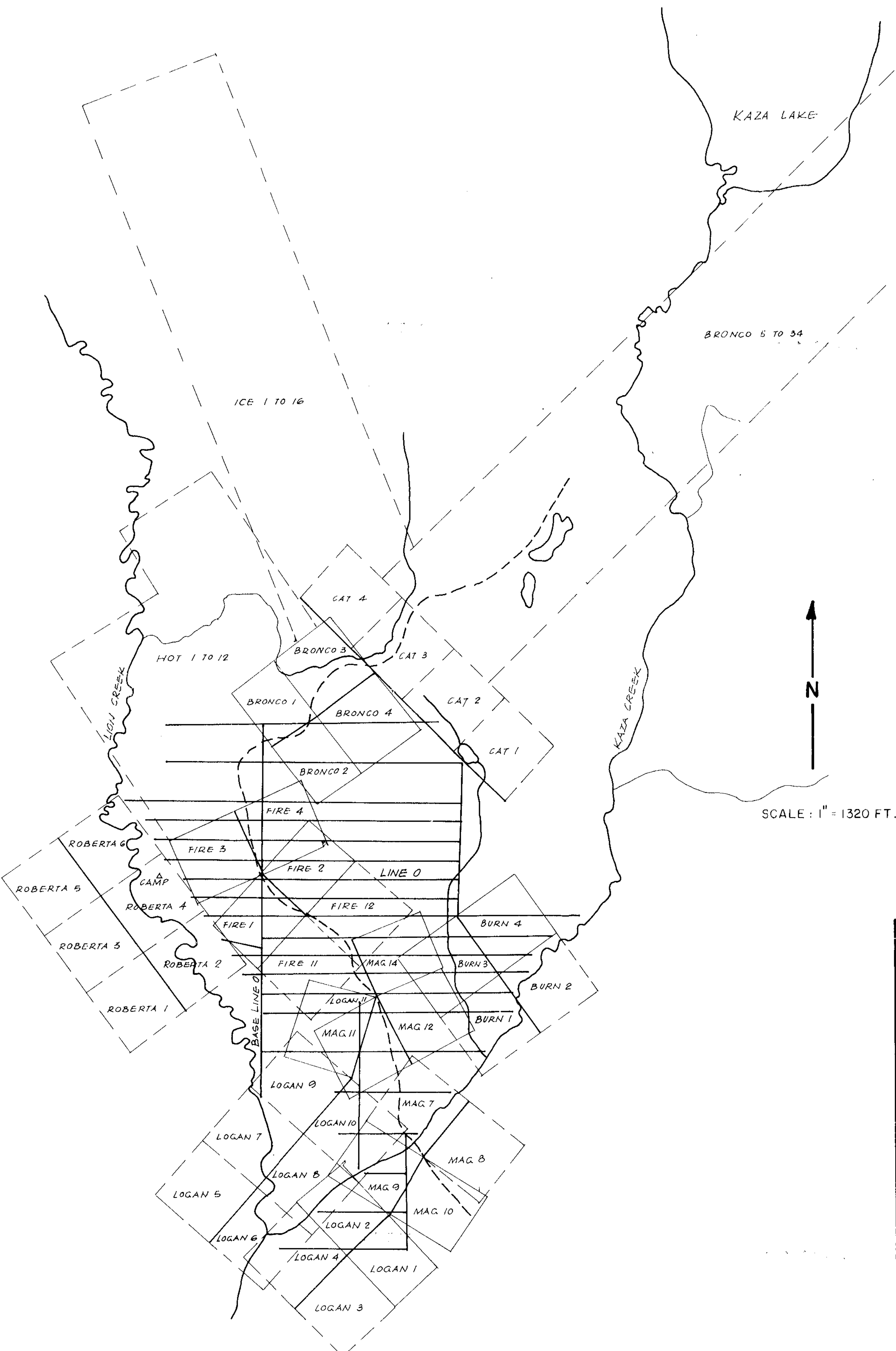
P. M. Dean

P. M. Dean
Geologist

June 27th, 1973

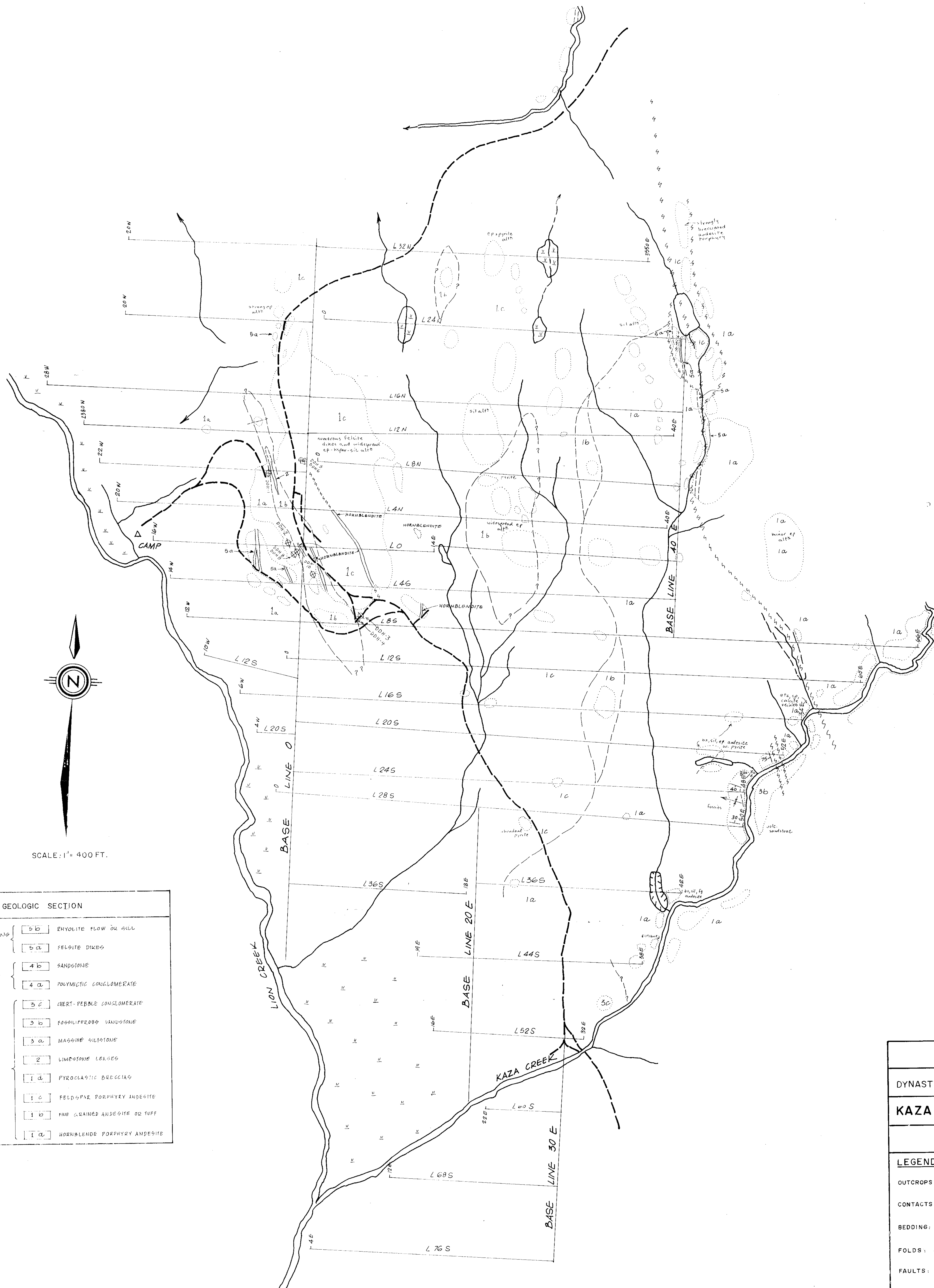


[Handwritten signature]



To accompany geological, geochemical & geophysical report by P.M. Dean, on the Kaza Copper Property just south of Kaza Lake, Omineca M.D., dated July 4, 1973

FIGURE 2	
DYNASTY EXPLORATIONS LTD.	
KAZA COPPER PROPERTY	
CLAIM MAP	
LEGEND: CLAIM LINES: CLAIM BOUNDARIES: LOCATION EXACT: LOCATION APPROXIMATE: ROAD: GRID LINES:	Department of Mines and Petroleum Resources ASSESSMENT REPORT NO. 4477 MAP # 2
P. DEAN JUNE 1973 4477 M2	



SCALE: 1" = 400 FT.

GEOLOGIC SECTION	
KANTBERG INTUSSIONS EARLY TERTIARY	5 b ZHYOLITE FLOW OR SILL
	5 a FELSITE DIKES
DUSTRI FORMATION UPPER CRETACEOUS TO PALEOCENE	4 b SANDSTONE
	4 a POLYMICIC CONGLOMERATE
TAKLA FORMATION UPPER TRIASSIC AND JURASSIC	3 c CHERT-PEBBLE CONGLOMERATE
	3 b FOSSILIFEROUS SANDSTONE
	3 a MAGNETIC SILTSTONE
	2 LIMESTONE LENSES
	1 d PYROCLASTIC BRECCIAS
	1 c FELDSPAR PORPHYRY ANDESITE
	1 b FINE GRAINED ANDESITE OR TOFF
	1 a HORNBLENDE PORPHYRY ANDESITE

To accompany geological, geochemical & geophysical report by P.M. Dean, on the Kaza Copper Property, just south of Kaza Lake, Ontario M.D., dated July 4, 1973

FIGURE 3

DYNASTY EXPLORATIONS LTD.

KAZA COPPER PROPERTY

GEOLOGIC MAP

LEGEND:

OUTCROPS:

CONTACTS:

BEDDING:

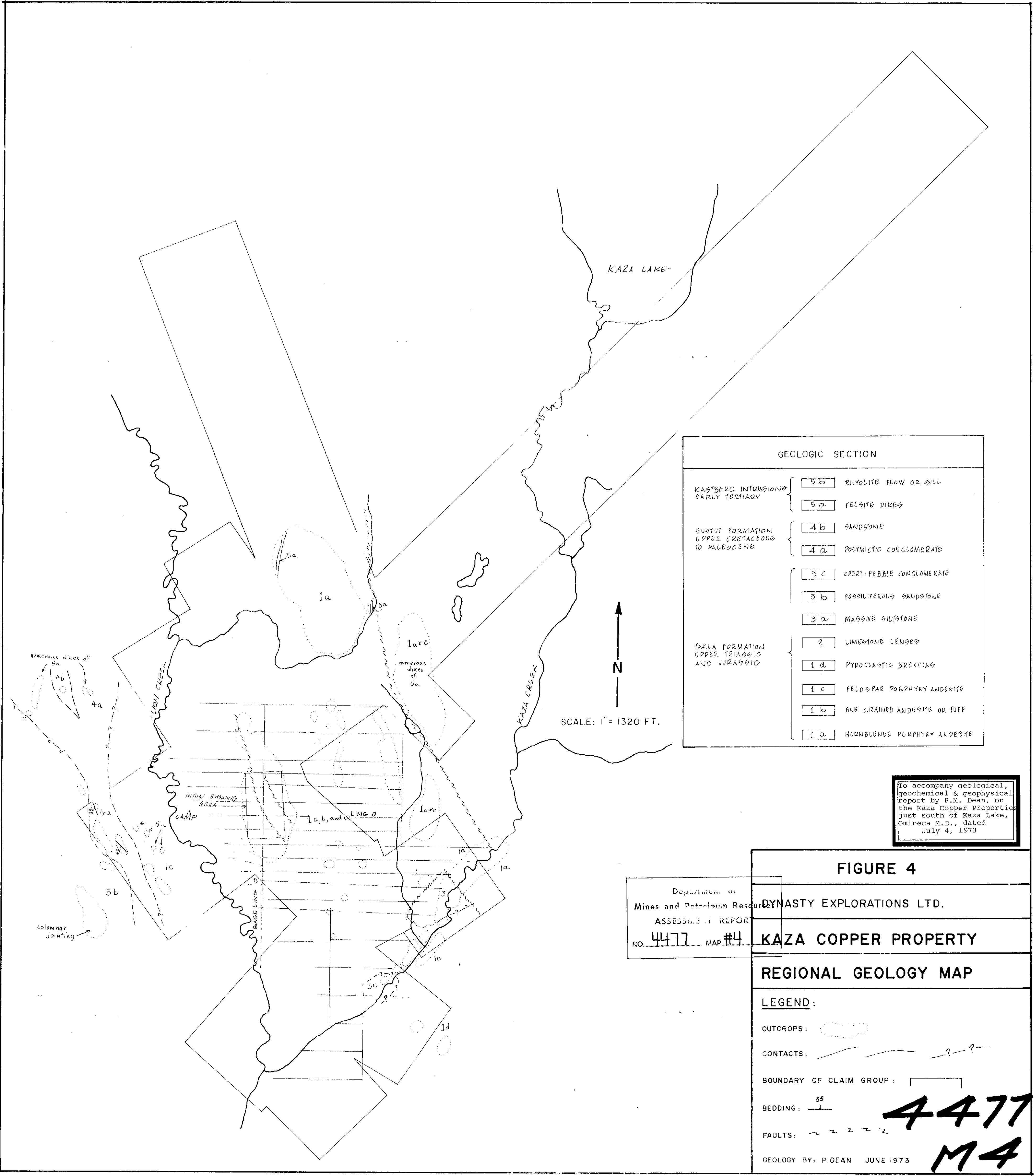
FOLDS:

FAULTS:

Department of
Mines and Petroleum Resources
ASSESSMENT REPORT
NO. 4477 MAP #3

GEOLOGY BY: P. DEAN MAY 1973

4477-M3



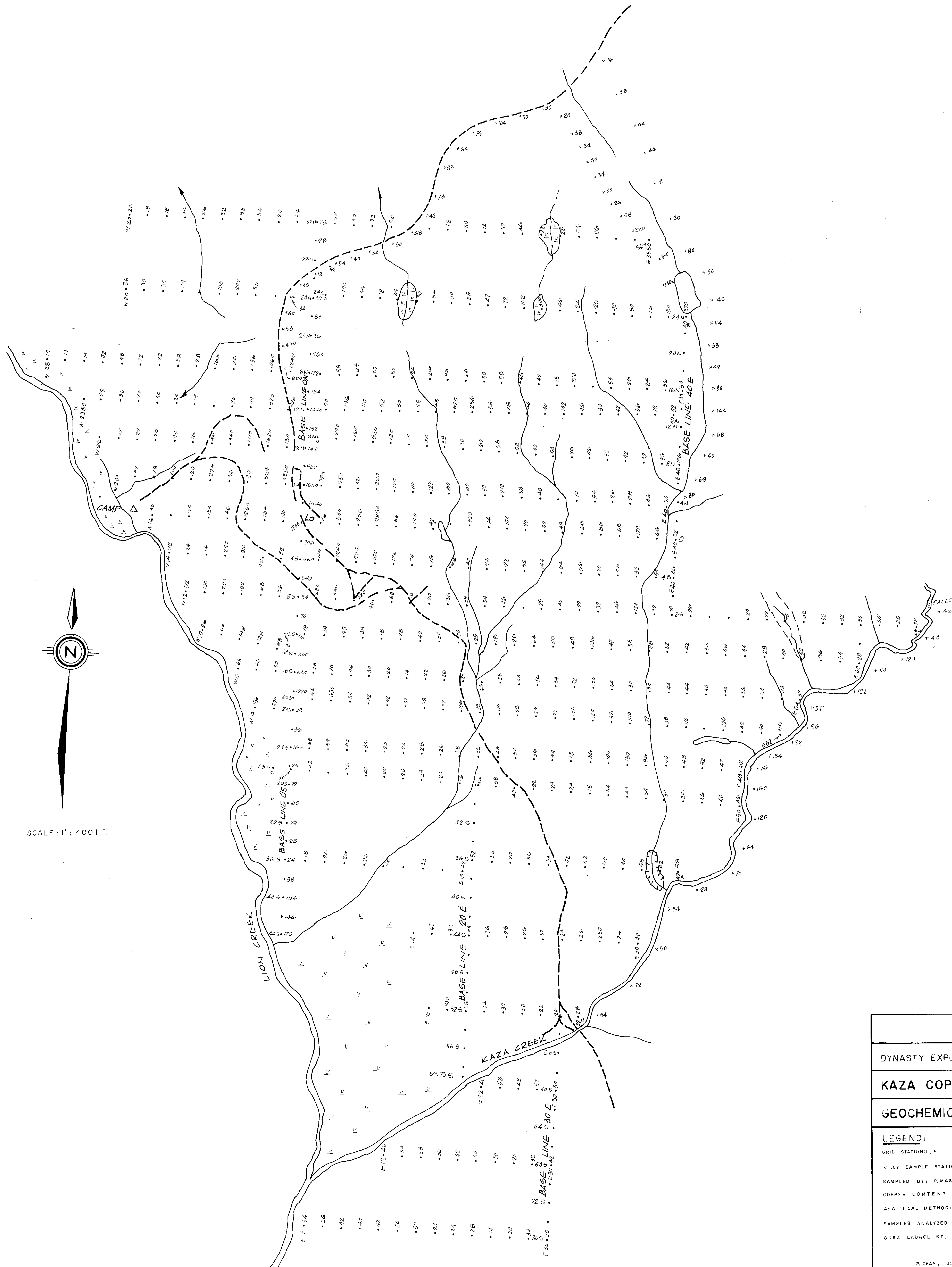
GEOLOGIC SECTION	
KASTBERG INTUSSIONS EARLY TERTIARY	5b RHYOLITE FLOW OR SILL
	5a FELSITE DIKES
SUSTUT FORMATION UPPER CRETACEOUS TO PALEOCENE	4b SANDSTONE
	4a POLYMICHTIC CONGLOMERATE
	3c CHERT-PEBBLE CONGLOMERATE
	3b FOSSILIFEROUS SANDSTONE
TAKLA FORMATION UPPER TRIASSIC AND JURASSIC	3a MASSIVE GILTSONE
	2 LIMESTONE LENSES
	1d PYROCLASTIC BRECCIAS
	1c FELDSPAR PORPHYRY ANDESITE
	1b FINE GRAINED ANDESITE OR TUFF
	1a HORNBLLENDE PORPHYRY ANDESITE

To accompany geological, geochemical & geophysical report by P.M. Dean, on the Kaza Copper Properties just south of Kaza Lake, Omineca M.D., dated July 4, 1973

FIGURE 4

Department of Mines and Petroleum Resources	DYNASTY EXPLORATIONS LTD.
ASSESSMENT REPORT	
NO. 4477 MAP. #4	KAZA COPPER PROPERTY
REGIONAL GEOLOGY MAP	
LEGEND:	
OUTCROPS:	
CONTACTS:	
BOUNDARY OF CLAIM GROUP:	
BEDDING:	
FAULTS:	
GEOLOGY BY: P.DEAN JUNE 1973	

4477
M4



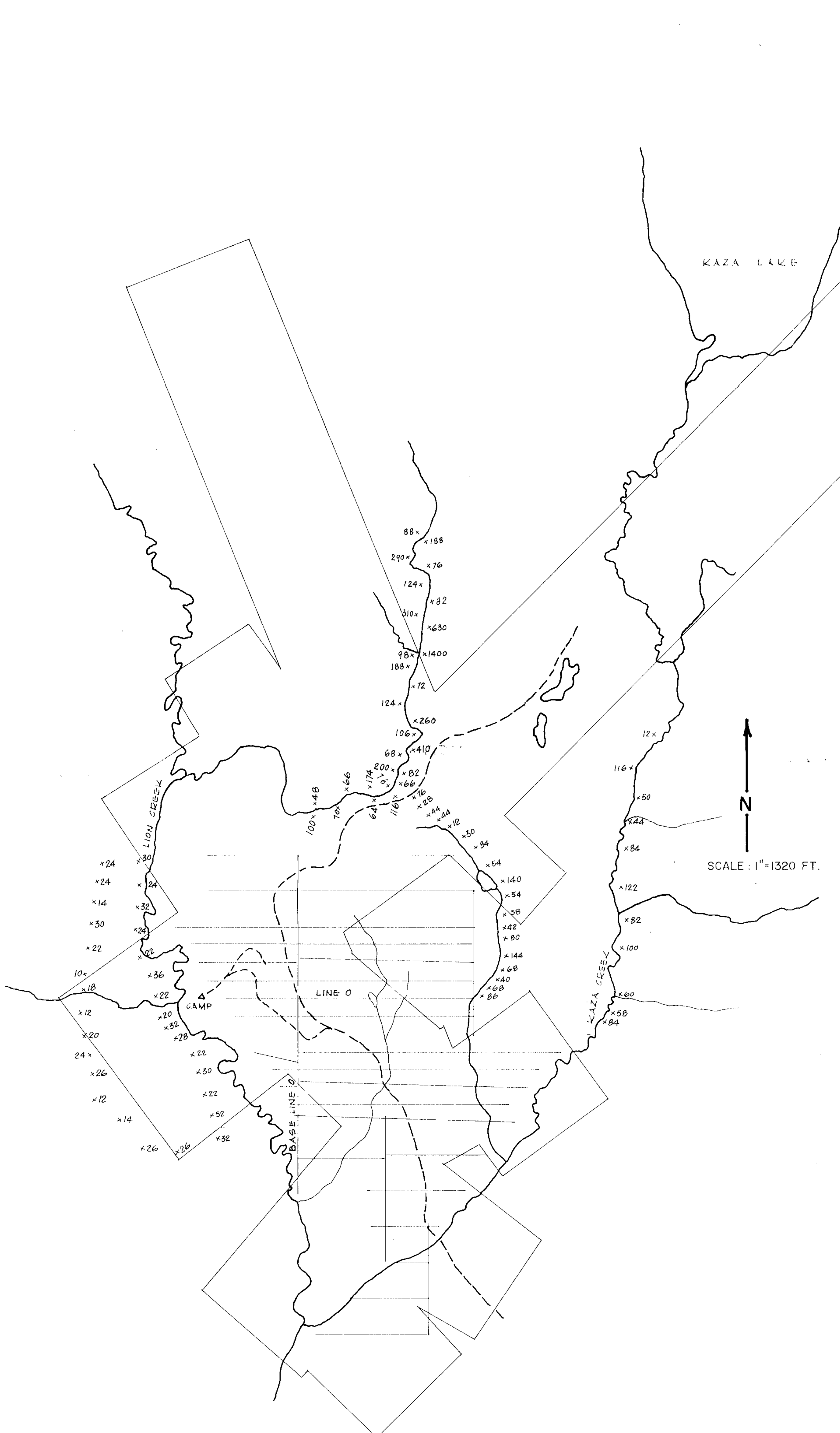
SCALE: 1" = 400 FT.

To accompany geological, geochemical & geophysical report by P.M. Dean, on the Kaza Copper Property, just south of Kaza Lake, Ontario N.D., dated July 4, 1973

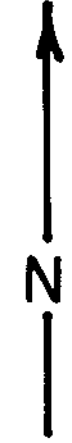
FIGURE 5	
DYNASTY EXPLORATIONS LTD.	
KAZA COPPER PROPERTY	
GEOCHEMICAL VALUES MAP	
<p>LEGEND:</p> <p>GRID STATIONS: *</p> <p>SPECY SAMPLE STATIONS: X</p> <p>SAMPLED BY: P. MASER</p> <p>COPPER CONTENT IN PPM: 124</p> <p>ANALYTICAL METHOD: TOTAL PERCHLORIC EXTRACTION</p> <p>SAMPLES ANALYZED BY: ACME ANALYTICAL LABORATORIES,</p> <p>6455 LAUREL ST., BURNABY 2, B.C.</p>	<p>Department of Minas and Petroleum Resources</p> <p>ASSESSMENT REPORT</p> <p>NO. 4477 MAP #5</p>

P. DEAN, JUNE 1973

4477-M5



KAZA LAKE



SCALE: 1"=1320 FT.

To accompany geological, geochemical & geophysical report by P.M. Dean, on the Kaza Copper Properties just south of Kaza Lake, Omineca M.D., dated July 4, 1973

FIGURE 6

DYNASTY EXPLORATIONS LTD.
 KAZA COPPER PROPERTY
 REGIONAL GEOCHEMISTRY MAP

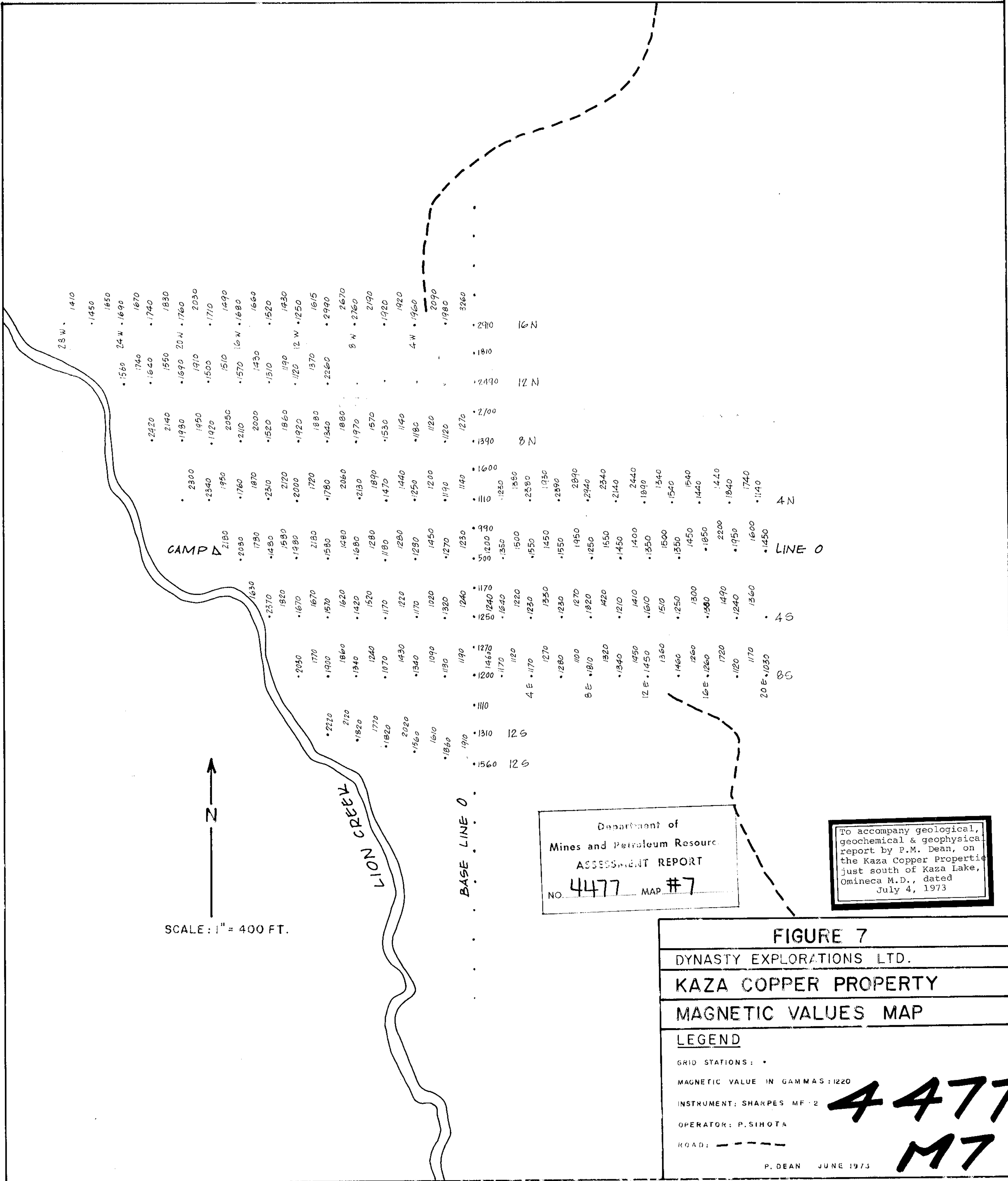
LEGEND:

SAMPLE STATIONS: x
 SAMPLED BY: P. MASER AND B. HOWARD
 COPPER CONTENT IN PPM: 120
 ANALYTICAL METHOD: TOTAL PERCHLORIC EXTRACTION

Department of
 Mines and Petroleum Resources
 ASSESSMENT REPORT
 NO. 4477 MAP #6

SAMPLES ANALYZED BY ACME ANALYTICAL LABORATORIES,
 6455 LAUREL ST., BURNABY 2, B.C.

4477
M6



Department of
Mines and Petroleum Resources
ASSESSMENT REPORT
NO. 4477 MAP #7

To accompany geological,
geochemical & geophysical
report by P.M. Dean, on
the Kaza Copper Property
just south of Kaza Lake,
Omineca M.D., dated
July 4, 1973

FIGURE 7

DYNASTY EXPLORATIONS LTD.

KAZA COPPER PROPERTY

MAGNETIC VALUES MAP

LEGEND

GRID STATIONS: •

MAGNETIC VALUE IN GAMMAS: 1220

INSTRUMENT: SHARPES MF-2

OPERATOR: P. SIHOTA

ROAD: - - - - -

P. DEAN JUNE 1973

4477

M7

DOMINION OF CANADA:
PROVINCE OF BRITISH COLUMBIA.
To Wit:

In the Matter of

BRONCO 1-34 - Record Nos. 116243-116276
BURN 1-4 - Record Nos. 50983-50986
HOT 1-6 - Record Nos. 111768-111773
7-12 - Record Nos. 116235-116240
ICE 1-16- Record Nos. 117742-117757
LOGAN 1-9-Record Nos. 115911-115919
10-11 -Record Nos. 116241-116242
MAG 5-12,
14 - Record Nos. 111774-111782
ROBERTA 1-6 -Record Nos. 112977-112982

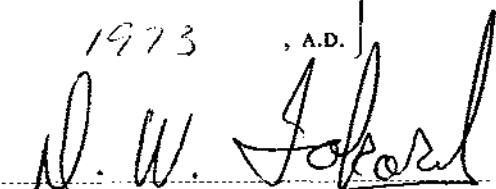
I, R. E. GORDON DAVIS
of Vancouver, B.C.

in the Province of British Columbia, do solemnly declare that

the Summary of Costs as shown in Appendix I of the report "Geological, Geochemical and Geophysical Investigations on the Kaza Copper Property - Bronco Burn, Hot, Ice, Logan, Mag, Roberts Claims" by Peter M. Dean, R.E. Gordon Davis, dated June 27th, 1973, is correct and true.

And I make this solemn declaration conscientiously believing it to be true, and knowing that it is of the same force and effect as if made under oath and by virtue of the "Canada Evidence Act."

Declared before me at the City
of Vancouver, in the
Province of British Columbia, this 10
day of July, 1973, A.D.



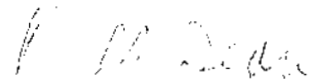
A Commissioner for taking Affidavits within British Columbia or
A Notary Public in and for the Province of British Columbia.

CERTIFICATION

I, Peter M. Dean, of 1405 - 1011 Beach Avenue, Vancouver, British Columbia, hereby certify that:

1. I graduated from the University of British Columbia in April, 1971, with a B.Sc. degree in geology.
2. Since 1966 I have been employed in various aspects of geological, geochemical and geophysical exploration.
3. Since 1971 I have been employed by Dynasty Explorations Limited as a geologist.
4. I hold no interest, direct or indirect, in the properties of Kaza Copper Limited.

Peter M. Dean



Vancouver, B.C.
June 28th, 1973.

Appendix I

SUMMARY OF COSTS
KAZA PROJECT - 1973

	Wages (Schedule "A")	Expenditures (Schedule "B")	<u>Total</u>
Report Writing	811.50		
Linecutting	219.44		
Geology	2,349.16		
Geophysics	221.15		
Geochemistry	625.87		
Assays		639.25	
Camp		812.91	
Freight & Transportation			
- Miscellaneous		368.03	
- Fixed-wing		1,192.00	
- Rotary-wing		<u>1,414.80</u>	
	<u>4,427.12</u>	<u>4,426.99</u>	\$ 8,854.11
Equipment use charge			\$ <u>442.70</u>
			\$ 9,296.81
Administrative Expense at 10%			\$ <u>929.68</u>
TOTAL			\$ <u>10,226.49</u>

KAZA PROJECT CLAIM EXPENDITURES

SCHEDULE "B"

1973

SUPPLIER	DESCRIPTION	TOTAL	ASSAYS	GROCERIES AND MEALS	ACCOMMODATION	SUPPLIES + SERVICES	MISC. FREIGHT AND TRANSPORTATION	ROTARY WING	FIXED WING
Acme Analytical	GEOCHEM ASSAY	58825	58825						
Avis		7260					7260		
BC Industries		200.56				200.56			
BC Telephone		5730				5730			
Canadian Freightways		1080					1080		
Can. Propane Gas Oil		4305				4305			
Deakin Equipment		3255					3255		
P. Deah.		42287		27963	3435	3005	7884		
Gen. Testing Lab		5100	5100						
Geological Assoc.		315.				315			
Harrison Airways		792.00							792.00
MINISTER OF FINANCE		525				525			
Okanagan Helicopters		141480						141480	
PWA		1424					1424		
Smith Travel		15900.					15900		
Trans Provincial Airlines		40000							40000
Tyce Motor Hotel		13721		7084	5357	1280			
Western Reproducers		2236				2236			
		442699	63925	35047	8792	37452	36803	141480	119200

(1) 812.91

NOTES:

- (1) 72 man days @ 4.86/man.
- (2) 3 nights - 2 rooms per night double occupancy

Acme Analytical Laboratories Ltd.

6455 LAUREL STREET

BURNABY 2, B. C.

Our File No: 2235

Date: June 8, 1973

Your Order No: _____

DYNASTY EXPLORATIONS LTD.,

330 - 355 BURNARD ST.,

VANCOUVER, B.C.

Terms: Net 2 Weeks

Number	Description	Price	Amount
4	Geochemical Au, Ag, Co, Cu, Ni, Pb, & Zn Assays	\$3.25	\$13.00
	sample preparation (4 rock chips)	\$.75	\$ 3.00
			\$16.00

102-08 *KAZA*
16cc
16cc
102-08

Acme Analytical Laboratories Ltd.

6455 LAUREL STREET

BURNABY 2, B. C.

Phone: 299-5242

Our File No: 2233

Date: June 6, 1973

Your Order No: _____

DYNASTY EXPLORATIONS LTD.,

330 - 355 BURNARD ST.,

VANCOUVER, B.C.

Terms: Net 2 Weeks

Number	Description	Price	Amount
654	Geochemical Copper Assays for KAZA PROJECT	\$1.00	\$654.00
	less 12½%		81.75
			\$572.25

102-08 *572.25*
572.25

RECEIVED

JUN 7 1973

T 40718

AVIS

RENTAL BILL OF PAID
AVIS ACCOUNT NUMBER

AVIS RENT A CAR
HOSKINS GARAGE
Box 400
SMITHERS B.C.

Dynasty Explorations,
Rm. 330
355 BARRARD
VANCOUVER.

4614 MAY 16/73
4559 MAY 15/73.

65 1
10 6.50

1 14.00 14.00

39755 T1141
F100 Pick-up, 673-847 B.C.

\$8.50

ACCOUNT	AMOUNT			
102-22	26.18			
TOTAL	26.18			
ADDS. + EXTENS.	CODING	O.K. TO PAY	POSTED	COPIES OF THIS RENTAL

DAYS 3.00
 28.50
 3.00
 22.50
 1.18
 2.50
 26.18
 26.18

PARKING AND TRAFFIC VIOLATIONS
PETER M. DEAN.
~~Peter M. Dean~~, DEAN.

3063 MAHON Ave N. Van.

1065882. B.C. 25/05/76 C L Withers

L. M. Shittle

39755

T 40718

THIS NUMBER MUST APPEAR ON ALL CORRESPONDENCE AND REMITTANCES

GAS NOT INCLUDED IN RATES

CUSTOMER'S INVOICE

AGREEMENT NUMBER
40732

STANDARD RENTAL AGREEMENT

AVIS TRUCK RENTAL REPORT OF CANADA LTD.



RENTAL WILL BE PAID BY
AVIS ACCOUNT NUMBER
NAME AND ADDRESS PLEASE PRINT
DYNASTY EXPLORATIONS
330 - 355 BURNER ST
VANCOUVER, B.C.
RIZA PROJECT.

AVIS RENT A CAR 89 32 L
HOSKINS GARAGE
P O BOX 400 HWY 16 EAST
SMITHERS B C
PHONE 604 847 2331
39755

81 - 5000 1/75
444444 MAY 30/73 1330

2. TYPE OF PAYMENT
CASH CLUB CREDIT AUTH'D BY
CLASS
39755 - T 1208
TYPE
FORD F250 674086 B.C.

99 DAYS AT RISK
13 10.01
2 \$1600 32.00

ACCOUNT	AMOUNT		
102-22	4642.00 SMITHERS		
TOTAL	4642		
ADDS. + EXTENS.	CODING	O.K. TO PAY	POSTED

3.00
42.01
42.01
TAX: 5% 26 2.10
2.31
4642

CUSTOMER IS LIABLE FOR ALL PARKING AND TRAFFIC VIOLATIONS
NAME: **PATRICK DUNN**
ADDRESS: **3067 MARION AVE**
CITY: **B.C.**
PHONE: **1065882**
EXP. DATE: **2/15/76**
SIGNATURE: *[Signature]*

4642
AGREEMENT NUMBER
T 40732
THIS NUMBER MUST APPEAR ON ALL CORRESPONDENCE AND REMITTANCES

GAS NOT INCLUDED IN RATES

COPIE DU CLIENT - CECI N'EST PAS VOTRE FACTURE. CUSTOMER'S COPY - THIS IS NOT YOUR INVOICE.

British Columbia Industries Sales (1966) Limited

1180 WEST HASTINGS STREET
PHONE 682-1667

VANCOUVER 1, B.C.
TELEX 04-54477

Dynasty Explorations
330 - 355 Burrard St.
Vancouver, B.C.

DATE
April 11, 1973

INVOICE

\$ 58609

SHIPPED TO

OUR ORDER NO. 6464

TERMS:

SALES NET 30 DAYS
RENTALS IN ADVANCE

SHIPPED VIA HR	NO. OF PARCELS 2	SHIPPER JR	CLERK PM	CASH CHARGE X	C.O.D.	PURCHASE ORDER NO. 4643A
--------------------------	----------------------------	----------------------	--------------------	-------------------------	--------	---------------------------------

QUANTITY		CAT. NO.	DESCRIPTION	SHIPPED	PRICE PER UNIT	AMOUNT
ORDERED	UNIT					
2	only		Pencil Magnets	2	2.50	5.00
2	"	10X	Hand Lens (lg. size)	2	3.50	7.00
24	"	321	Pacific Fillers	24	11.90/dz	23.80
2	"	310	" Rainproof books	2	4.15	8.30
500	sht	9 x9	Acetate Overlays	500	15.50/dz	77.50
30	only	Black	Blaisdell Liquitip	30	8.00/dz	24.00
1	doz	2H	Castell Pencils	1	3.30/dz	3.30
1	"	F	Mars "	1	3.60/dz	3.60
1	"	Black	Eagle stick pens fine	1	39.00	46.80
6	only	51	Blue lined pads 8½ x 11	6	65.00	390.00
1	"	1000H-10	Clearprint Pad 8½ x 11	1		3.45
2	roll		Tuck Draftape ½ x 60	2	1.00	2.00
2	"	Bulk	Magic Mend 3/4 x 1269	2	150	300.00
		102-21	45.50			169.53
		103-21	132.51			
			178.01			
					S.S. TAX	8.48
					TOTAL	178.01

PAID

THIS IS YOUR INVOICE

OVERDUE ACCOUNTS SUBJECT TO INTEREST

MERCHANDISE RETURNED FOR CREDIT WILL NOT BE ACCEPTED UNLESS PREVIOUS ARRANGEMENTS HAVE BEEN MADE

... WILL BE ACCEPTED UNLESS PREVIOUS ARRANGEMENTS HAVE BEEN MADE

BE SENT FOR _____

SHIPP TO: _____ ATTENTION _____

DESTINATION _____ F.O.B. _____

V : _____ CARRIER _____ PREPAY AND CHARGE ON INVOICE
 ATTACH ORIGINAL BILL FOR FREIGHT CHARGES
 FREIGHT COLLECT CARRIER TO CHARGE COMPANY

APPROVED FOR PAYMENT BY:	RECORD OF PAYMENT			CHEQUE		
	DATE REC'D.	DATE	INVOICE	AMOUNT	NO.	DATE
REC'D. BY: _____						

ATLAS EXPLORATIONS LTD.

PURCHASING AGENT



British Columbia Industries Sales (1966) Limited

1180 WEST HASTINGS STREET
PHONE 682-1667

VANCOUVER 1, B.C.
TELEX 04-54477

SOLD TO Dynasty Explorations
330 - 355 Burrard St.
Vancouver, B.C.

DATE April 11, 1973

SHIPPED TO

INVOICE

\$ 58600

OUR ORDER NO. 6464

PURCHASE ORDER NO. 4843A

SHIPPED VIA HR

NO. OF PARCELS 2

SHIPPER JR

CLERK PM

CASH CHARGE X

C.O.D.

TERMS:
SALES NET 30 DAYS
RENTALS IN ADVANCE

QUANTITY ORDERED	UNIT	CAT. NO.	DESCRIPTION	SHIPPED	PRICE PER UNIT	AMOUNT
6	only	101	Pink Pearls	6	.15	90
1	"		Topofil Chaix s/n# 3868	1		185.00
20	cones		Topofil Chaix Cotton	20	3.8500	77.00
2	only	3060-2	Rapidograph Pens	2	7.00	14.00
2	"	" - 0	" "	2	7.00	14.00
						290.90
<p>102-21 119.88</p> <p>201-004 85.57</p> <p>102-21 119.88</p> <p>103-21 185.57</p> <p>103-21</p> <p>305.45</p> <p>CR</p>						
<p>RESIDENT</p> <p>FL. 114.17 5%</p> <p>K. 176.73 5%</p>						
<p>PAID</p> <p>Are !!</p> <p>NEED INVOICE</p> <p>58609</p>						
						B.S. TAX 14.55
TOTAL						305.45

THIS IS YOUR INVOICE

VERDUE ACCOUNTS SUBJECT TO INTEREST

MERCHANDISE RETURNED FOR CREDIT WILL NOT BE ACCEPTED UNLESS PREVIOUS ARRANGEMENTS HAVE BEEN MADE

... WILL BE APPLIED UNLESS PREVIOUS ARRANGEMENTS HAVE BEEN MADE

BE USED FOR _____

SHIP TO: _____ ATTENTION _____

DESIGNATION _____ F.O.B. _____

VIA _____ CARRIER _____

APPROVED FOR PAYMENT BY: _____

DATE REC'D.	RECORD OF PAYMENT			CHEQUE	
	DATE	INVOICE	AMOUNT	NO.	DATE

REC'D. BY: _____

VIA: _____

PREPAY AND CHARGE ON INVOICE

ATTACH ORIGINAL BILL FOR FREIGHT CHARGES

FREIGHT COLLECT CARRIER TO CHARGE COMPANY

ATLAS EXPLORATIONS LTD.

PURCHASING AGENT

ACCOUNTING



British Columbia Industries Sales (1966) Limited

1180 WEST HASTINGS STREET
PHONE 682-1667

VANCOUVER 1. B.C.
TELEX 04-54477

DATE

SOLD TO: Dynasty Explorations, June 24/73

Ltd.

330-355 Burrard St.

SHIPPED TO: Vancouver B.C.

OUR ORDER NO. 8710

PURCHASE ORDER NO. 4670

SHIPPED VIA: T.N.

NO. OF PARCELS	SHIPPER	CLERK	CASH	CHARGE	C.O.D.
<u>1</u>	<u>92</u>	<u>DD</u>	<u>✓</u>	<u>✓</u>	

INVOICE

361446

TERMS:
SALES NET 30 DAYS
RENTALS IN ADVANCE

QUANTITY		CAT. No.	DESCRIPTION	SHIPPED	PRICE PER UNIT	AMOUNT	
ORDERED	UNIT						
1	set	1104	Castell T G Pen	1		27	00
1	only	833/21	Castell A Scale	1		2	00
1	✓		Stud Finder	1		3	00
						33	50
			102-21			35	18
						35	18
			<u>cr</u>				
					S.S. TAX		168
					TOTAL		3519

THIS IS YOUR INVOICE Qb

OVERDUE ACCOUNTS SUBJECT TO INTEREST

MERCHANDISE RETURNED FOR CREDIT WILL NOT BE ACCEPTED UNLESS PREVIOUS ARRANGEMENTS HAVE BEEN MADE

PAGE		2		YOUR TELEPHONE NUMBER			6E5 4331		DATE OF BILL		MAY 20, 1973	
CALLS TO		NUMBER		TY		MIN		CALLS FROM		AMOUNT		
APR 19	WINNIPEG	MAN	774 1861	OK	2 SBJ / MCEL	4.00				1.50	90-41	ALTA
APR 19	WHITEHORSE	YT	667 6434	OK	3 TA / ACC	2.85				2.85	147-21	FOTO
APR 19	WINNIPEG	MAN	774 1861	OK	3 SBJ / ROBERTSON P.P.	2.25				2.25	90-41	
APR 19	WINNIPEG	MAN	774 1861	OK	1 SBJ / LOGAN P.P.	8.25				8.25	90-41	
APR 19	FARO	YT	994 2705	L	2 SBJ / HUSKY	4.35				4.35	147-21	FOTO
APR 19	ROSS RIVER	YT	969 0040	L	7 WR / ROLLS	8.15				8.15	151-21	PLATA
APR 23	TORONTO	ONT	363 6121	L	20	22.45				22.45	90-41	
APR 23	WINNIPEG	MAN	988 5858	L	53 SBJ / MCEL	42.60				42.60	90-41	FOTO
APR 24			564 5131	4L	6 PR GEO BC	4.74				4.74	102-21	KAZA
APR 24	WINNIPEG	MAN	988 5998	OK	5 SBJ / DON	3.75				3.75	90-41	
APR 24	WINNIPEG	MAN	988 5858	L	99 SBJ / McCLANDRESS	77.10				77.10	90-41	
APR 24	WHITEHORSE	YT	668 2177	1K	8 TMTA	7.60				7.60	93-04	
APR 25	ROSS RIVER	YT	969 0040	1K	5 WR / ROLLS	4.80				4.80	151-21	PLATA
APR 26	GANGES	BC	537 2451	1K	2 SBJ	.70				.70	90-41	PLATA
APR 26			537 2451	4L	7 GANGES BC	2.27				2.27	90-41	
APR 26	WINNIPEG	MAN	774 1861	OK	2 SBJ / ROBERTSON	1.50				1.50	90-41	
APR 26	WATSON LK	YT	536 7306	OK	12 M.D. / MINING RESERV	10.80				10.80	93-04	
APR 26	ROSS RIVER	YT	969 0040	1K	7 WR / ROLLS	6.70				6.70	151-21	PLATA
APR 27			537 2451	4L	5 GANGES BC	1.81				1.81	90-41	
APR 27	ROSS RIVER	YT	969 0040	L	3 WR / ROLLS	4.35				4.35	151-21	SLOWLY
APR 30	EDMONTON	ALTA	422 0188	OK	12 REG DAVIS / NUMER	7.80				7.80	141-21	
APR 30	DENVER SW	COL	986 3448	OK	1 / MIDWEST	2.20				2.20	147-21	
APR 30	EDMONTON	ALTA	484 4749	OK	1	.65				.65	147-21	CFD

PLEASE SEE REVERSE SIDE FOR EXPLANATION OF TYPES OF LONG DISTANCE CALLS.

leaf stub here

DATE	AMOUNT	DATE	AMOUNT	DATE	AMOUNT	DATE	AMOUNT	DATE	AMOUNT
90-41	187.21	90-41	7.10	93-04	8.70	102-21	4.74	147-21	2.85
91-30	473.53	90-41	7.10	93-04	4.25	102-21	2.40	147-21	2.20
93-04	61.30	90-41	7.10	93-04	7.60	102-21	7.26	147-21	4.35
93-04	187.21	90-41	7.10	93-04	10.80	102-21	1.80	147-21	4.35
93-04	6.30	90-41	7.10	93-04	9.10	102-21	1.20	147-21	2.90
93-04	186.01	90-41	7.10	93-04	2.85	102-21	1.20	147-21	10.80
93-04	31.65	90-41	7.10	93-04	2.21	102-21	1.20	147-21	2.20
93-04	4.75	90-41	7.10	93-04	8.45	102-21	1.20	147-21	2.20
93-04	8.85	90-41	7.10	93-04	2.21	102-21	1.20	147-21	2.20
93-04	4.80	90-41	7.10	93-04	2.21	102-21	1.20	147-21	2.20
93-04	6.70	90-41	7.10	93-04	2.21	102-21	1.20	147-21	2.20
93-04	24.60	90-41	7.10	93-04	2.21	102-21	1.20	147-21	2.20
93-04	148.21	90-41	7.10	93-04	2.21	102-21	1.20	147-21	2.20
93-04	6.10	90-41	7.10	93-04	2.21	102-21	1.20	147-21	2.20
93-04	24.60	90-41	7.10	93-04	2.21	102-21	1.20	147-21	2.20
93-04	6.10	90-41	7.10	93-04	2.21	102-21	1.20	147-21	2.20
93-04	24.60	90-41	7.10	93-04	2.21	102-21	1.20	147-21	2.20
93-04	6.10	90-41	7.10	93-04	2.21	102-21	1.20	147-21	2.20
93-04	24.60	90-41	7.10	93-04	2.21	102-21	1.20	147-21	2.20
93-04	6.10	90-41	7.10	93-04	2.21	102-21	1.20	147-21	2.20
93-04	24.60	90-41	7.10	93-04	2.21	102-21	1.20	147-21	2.20
93-04	6.10	90-41	7.10	93-04	2.21	102-21	1.20	147-21	2.20
93-04	24.60	90-41	7.10	93-04	2.21	102-21	1.20	147-21	2.20
93-04	6.10	90-41	7.10	93-04	2.21	102-21	1.20	147-21	2.20
93-04	24.60	90-41	7.10	93-04	2.21	102-21	1.20	147-21	2.20
93-04	6.10	90-41	7.10	93-04	2.21	102-21	1.20	147-21	2.20
93-04	24.60	90-41	7.10	93-04	2.21	102-21	1.20	147-21	2.20
93-04	6.10	90-41	7.10	93-04	2.21	102-21	1.20	147-21	2.20
93-04	24.60	90-41	7.10	93-04	2.21	102-21	1.20	147-21	2.20
93-04	6.10	90-41	7.10	93-04	2.21	102-21	1.20	147-21	2.20
93-04	24.60	90-41	7.10	93-04	2.21	102-21	1.20	147-21	2.20
93-04	6.10	90-41	7.10	93-04	2.21	102-21	1.20	147-21	2.20
93-04	24.60	90-41	7.10	93-04	2.21	102-21	1.20	147-21	2.20
93-04	6.10	90-41	7.10	93-04	2.21	102-21	1.20	147-21	2.20
93-04	24.60	90-41	7.10	93-04	2.21	102-21	1.20	147-21	2.20
93-04	6.10	90-41	7.10	93-04	2.21	102-21	1.20	147-21	2.20
93-04	24.60	90-41	7.10	93-04	2.21	102-21	1.20	147-21	2.20
93-04	6.10	90-41	7.10	93-04	2.21	102-21	1.20	147-21	2.20
93-04	24.60	90-41	7.10	93-04	2.21	102-21	1.20	147-21	2.20
93-04	6.10	90-41	7.10	93-04	2.21	102-21	1.20	147-21	2.20
93-04	24.60	90-41	7.10	93-04	2.21	102-21	1.20	147-21	2.20
93-04	6.10	90-41	7.10	93-04	2.21	102-21	1.20	147-21	2.20
93-04	24.60	90-41	7.10	93-04	2.21	102-21	1.20	147-21	2.20
93-04	6.10	90-41	7.10	93-04	2.21	102-21	1.20	147-21	2.20
93-04	24.60	90-41	7.10	93-04	2.21	102-21	1.20	147-21	2.20
93-04	6.10	90-41	7.10	93-04	2.21	102-21	1.20	147-21	2.20
93-04	24.60	90-41	7.10	93-04	2.21	102-21	1.20	147-21	2.20
93-04	6.10	90-41	7.10	93-04	2.21	102-21	1.20	147-21	2.20
93-04	24.60	90-41	7.10	93-04	2.21	102-21	1.20	147-21	2.20
93-04	6.10	90-41	7.10	93-04	2.21	102-21	1.20	147-21	2.20
93-04	24.60	90-41	7.10	93-04	2.21	102-21	1.20	147-21	2.20
93-04	6.10	90-41	7.10	93-04	2.21	102-21	1.20	147-21	2.20
93-04	24.60	90-41	7.10	93-04	2.21	102-21	1.20	147-21	2.20
93-04	6.10	90-41	7.10	93-04	2.21	102-21	1.20	147-21	2.20
93-04	24.60	90-41	7.10	93-04	2.21	102-21	1.20	147-21	2.20
93-04	6.10	90-41	7.10	93-04	2.21	102-21	1.20	147-21	2.20
93-04	24.60	90-41	7.10	93-04	2.21	102-21	1.20	147-21	2.20
93-04	6.10	90-41	7.10	93-04	2.21	102-21	1.20	147-21	2.20
93-04	24.60	90-41	7.10	93-04	2.21	102-21	1.20	147-21	2.20
93-04	6.10	90-41	7.10	93-04	2.21	102-21	1.20	147-21	2.20
93-04	24.60	90-41	7.10	93-04	2.21	102-21	1.20	147-21	2.20
93-04	6.10	90-41	7.10	93-04	2.21	102-21	1.20	147-21	2.20
93-04	24.60	90-41	7.10	93-04	2.21	102-21	1.20	147-21	2.20
93-04	6.10	90-41	7.10	93-04	2.21	102-21	1.20	147-21	2.20
93-04	24.60	90-41	7.10	93-04	2.21	102-21	1.20	147-21	2.20
93-04	6.10	90-41	7.10	93-04	2.21	102-21	1.20	147-21	2.20
93-04	24.60	90-41	7.10	93-04	2.21	102-21	1.20	147-21	2.20
93-04	6.10	90-41	7.10	93-04	2.21	102-21	1.20	147-21	2.20
93-04	24.60	90-41	7.10	93-04	2.21	102-21	1.20	147-21	2.20
93-04	6.10	90-41	7.10	93-04	2.21	102-21	1.20	147-21	2.20
93-04	24.60	90-41	7.10	93-04	2.21	102-21	1.20	147-21	2.20
93-04	6.10	90-41	7.10	93-04	2.21	102-21	1.20	147-21	2.20
93-04	24.60	90-41	7.10	93-04	2.21	102-21	1.20	147-21	2.20
93-04	6.10	90-41	7.10	93-04	2.21	102-21	1.20	147-21	2.20
93-04	24.60	90-41	7.10	93-04	2.21	102-21	1.20	147-21	2.20
93-04	6.10	90-41	7.10	93-04	2.21	102-21	1.20	147-21	2.20
93-04	24.60	90-41	7.10	93-04	2.21	102-21	1.20	147-21	2.20
93-04	6.10	90-41	7.10	93-04	2.21	102-21	1.20	147-21	2.20
93-04	24.60	90-41	7.10	93-04	2.21	102-21	1.20	147-21	2.20
93-04									

PAGE		4		YOUR TELEPHONE NUMBER		685 4331		DATE OF BILL		MAY 20, 1973	
CALLS TO		NUMBER		TY		MIN CALLS FROM		AMOUNT			
MAY 9	YELLOWKNF	NWT	873 4431	OK	12 RECD	/CURRIE		11.45	141-21	SP...	
MAY 10	VICTORI	BC	387 3976	OK	1	/SEWIT		.32	90-41		
MAY 10	SMITHER	BC	847 2201	OK	2 RECD			1.20	141-21	KAZA	
MAY 10	TORONTO	ONT	364 3143	OK	1 RECD	/CAMERON		.95	40-41		
MAY 14	TFLKWA	BC	846 5455	OK	2 RECD			1.20	102-21	KAZA	
MAY 14	WHITEHORSE	YT	667 7861	OK	6	YT. DOMESTIC		5.70	93-04		
MAY 15	VICTORI	BC	387 3976	OK	24	BOULET/SEWIT		6.30	90-41		
TOTAL TOLL CHARGES							417.11				
S.S. TAX AT 5% ON RENTAL OF							349.50		17.48		
CURRENT CHARGES PAYABLE BY JUN 8											826.39
TOTAL											2010.40

PLEASE SEE REVERSE SIDE FOR EXPLANATION OF TYPES OF LONG DISTANCE CALLS.

tear stub here

PAGE		3		YOUR TELEPHONE NUMBER		685 4331		DATE OF BILL		MAY 20, 1973	
CALLS TO		NUMBER		TY		MIN CALLS FROM		AMOUNT			
APR 30	FARO	YT	994 2770	1K	3 TA.	/COLES		2.90	147-21	PHOTO	
APR 30	RCSS RIVER	YT	969 0023	L	8 SAS	/LWT.		9.10	93-04		
MAY 1	PENTICT	BC	492 3895	L	2		OK	2.35	141-21	SP...	
MAY 1	WHITEHORSE	YT	667 5256	OK	2			2.85	93-04	R.R.	
MAY 1	WHITEHORSE	YT	667 7173	OK	1			2.85	90-41		
MAY 1	WHITEHORSE	YT	667 7173	OK	1			2.85	90-41		
MAY 1	WHITEHORSE	YT	667 7861	L	6 MP	/BUTTER		7.10	73-04		
MAY 2			492 3895	4K	3	PENTICT BC	OK	1.50	141-21	SP...	
MAY 2	CALGARY	ALTA	264 3434	OK	5	RECD /GALSON		3.25	91-30		
MAY 2	DENVER SW	COLO	986 3448	OK	4	SAS /MOWAT		2.85	91-30		
MAY 3	HOUSTON	TEX	224 9261	OK	2	/GEN. STUDE		2.60	91-30		
MAY 3	LOSANGELES	CAL	489 3700	L	3	RECD /THURLOW		3.20			
MAY 4	VICTORI	BC	387 3976	OK	1			.32	90-41		
MAY 4	VICTORI	BC	387 3976	OK	1			.32	90-41		
MAY 4	WHITEHORSE	YT	667 2565	OK	5			4.75	102-21	R.R.	
MAY 4	TELKWA	BC	846 5455	OK	4	PD		2.40	102-21	KAZA	
MAY 7			564 5131	4L	10	PR GEO BC		7.26	102-21	KAZA	
MAY 7	HOUSTON	TEX	224 9261	OK	13	RECD /FOSS		10.60	147-21	PHOTO	
MAY 7	WHITEHORSE	YT	668 2134	L	4	SAS /BUTTER		5.20	93-04		
MAY 8	WHITEHORSE	YT	667 7861	L	5	RAHO MCINTYRE		6.15	11-215		
MAY 8	TORONTO	ONT	867 7270	L	3	RECD /MORRISON		6.30	91-30	ADMIN	
MAY 9	SMITHER	BC	847 9444	OK	3	PD - OK		1.80	102-21	KAZA	
MAY 9	EDMONTON	ALTA	422 6188	OK	2	RECD CURRIE		1.30	141-21		

PLEASE SEE REVERSE SIDE FOR EXPLANATION OF TYPES OF LONG DISTANCE CALLS.

tear stub here

ATLAS EXPLORATIONS LTD C/O DYNASTY EXPLORATIONS LTD 328 355 BUKKARD VANCOUVER 1 BC		YOUR TELEPHONE NUMBER 685 4331 3 VANCOUVER PREVIOUS BILL PAYMENT	DATE OF BILL APR 20, 1973		
		1189.93	AMOUNT		
		626.06 CR	563.87 <i>Rec'd</i>		
BAL. FORWARD					
RENTAL FROM APR 20 TO MAY 20		346.45			
FROM APR 20 TO MAY 20 TAX FREE		3.60			
ADVERTISING, VANCOUVER DIRECTORY		38.70			
CALLS TO	NUMBER	TY MIN	CALLS FROM	AMOUNT	REMARKS
MAR 12	969 0000	4K	9 ROSSRVR YT	8.75	
MAR 12	969 0000	4K	9 ROSSRVR YT	8.75	
MAR 19	462 9073	4L	3 PR GEO BC	2.85	
MAR 20	CHATHAM CNT 354 4755	OK	1 SBJ / QB	.95	91-30
MAR 20	TCRCNTC CNT 361 3100	L	9 REGD / LYNCH	12.00	91-30
MAR 22	DENVER CCLD 255 4851	L	19 REGD / MIDWEST	13.60	148-21
MAR 22	ROSSRVR YT 969 0040	L	3	4.35	151-21
MAR 26	EDMONTON ALTA 484 4749	L	22 REGD / QUEBEC	16.25	91-30
MAR 27	HCLUSTON TEX 224 9261	OK	15 REGD / DENVER	12.20	148-21
MAR 27	WHITEHORSE YT 667 7403	L	4	5.20	151-21
MAR 28	CARMFL CAL 624 5945	OK	1	1.90	HT HAWTH
MAR 28	CHICAGO ILL 828 4335	OK	5 AHO / HAWORTH	4.00	11-215
MAR 28	WHITEHORSE YT 667 2181	OK	2 WR / VOISEN	2.85	151-21

PLEASE SEE REVERSE SIDE FOR EXPLANATION OF TYPES OF LONG DISTANCE CALLS.

CASHIER STUB

If any part of this bill has been paid or is being adjusted, please deduct and pay balance. Payment may be made at any of our business offices or payment agencies.



FOR INQUIRIES CALL
BUSINESS OFFICE TELEPHONE NUMBER

B.C. TELEPHONE COMPANY

PAID

* DIAL OPERATOR

YOUR TELEPHONE NUMBER

AMOUNT DUE

102-21

2.85

1 - Night Call
 2 - Evening Call
 3 - Day Call
 4 - Day Call

0 - Customer Dialed Call
 1 - Operator Assisted Call
 2 - 3rd Party Call
 3 - Call

TYPES OF LONG DISTANCE CALLS

MIN. - Minutes, length of conversation

EXPLANATION OF CODES AND ABBREVIATIONS

BRITISH COLUMBIA TELEPHONE COMPANY

IN THE **PAGES**

PAGE		YOUR TELEPHONE NUMBER		DATE OF BILL		
3		685 4331		JUN 20, 1973		
CALLS TO		NUMBER	TYPE	MIN	CALLS FROM	AMOUNT
JUN 1	ROSS RIVER	YT 969 0023	L		3 W. ROBERTS / RR	9.10
JUN 4	WHITEHORSE	YT 668 2101	L		3 NORTH...	2.85
JUN 4	ROSS RIVER	YT 969 0023	L		7 ADAMSON / RR	6.70
JUN 4	TORONTO	ONT 366 5600	L		13 REGD / ELLIOTT	15.80
JUN 4	ROSS RIVER	YT 969 0023	L		5 REGD R.R.	4.80
JUN 6	CHATHAM	ONT 354 4755	L		29 BEACH G BC	31.00
JUN 8	WHITEHORSE	YT 668 2101	L		4 REGD / NORTH...	3.80
JUN 8	WHITEHORSE	YT 667 7861	L		0 REGD BAYTER	7.10
JUN 12	TERRACE	BC 635 6516	L		4 CM / TRANS PROV...	2.66
JUN 13	WHITEHORSE	YT 667 2694	L		3 REGD WH ASSOCY	2.85
JUN 13	WHITEHORSE	YT 667 6434	L		3 REGD DAVIS / SAITH	2.85
JUN 13	ROSS RIVER	YT 969 0023	L		3 REGD / ADAMSON	6.70
TOTAL TOLL CHARGES				340.54		
S.S. TAX AT 5% ON RENTAL OF				353.45		17.67
CURRENT CHARGES PAYABLE BY JUL 9						753.96
TOTAL						753.96

PLEASE SEE REVERSE SIDE FOR EXPLANATION OF TYPES OF LONG DISTANCE CALLS.

tear stub here

CASHIER STUB

If any part of this bill has been paid or is being adjusted, please deduct and pay balance. Payment may be made at any of our business offices or payment agencies.

IMPORTANT

WHEN RECEIVED BY MAIL: number each Cashier Stub amount and mail Telephone payment

FOR INQUIRIES CALL BUSINESS OFFICE TELEPHONE NUMBER

B.C. TELEPHONE COMPANY

ASK FOR SPECIAL ACCOUNTS 683-5511

768 SEYMOUR STREET, VANCOUVER 2, B.C.

VANCOUVER * DIAL OPERATOR

683 4331 YOUR TELEPHONE NUMBER

3 JUN 20, 1973

753.96 AMOUNT DUE

BRITISH COLUMBIA TELEPHONE CO.

IN THE

PAGE		2	
CALLS TO	NUMBER	MIN	CALLS FROM
MAY 22	TORONTO ONT	486	6
MAY 22	TORONTO ONT	867	3
MAY 22	ROSS RIVER YT	969	0
MAY 22	WHITEHORSE YT	667	2
MAY 22	WHITEHORSE YT	668	2
MAY 24	VICTORIA BC	384	0
MAY 24	WHITEHORSE YT	667	2
MAY 24	ROSS RIVER YT	969	0
MAY 25	VICTORIA BC	384	0
MAY 25	ROSS RIVER YT	969	0
MAY 25	ROSS RIVER YT	667	2
MAY 28	POW RIV BC	485	2
MAY 29	CALGARY ALTA	264	2
MAY 29	WHITEHORSE YT	667	2
MAY 29		668	2
MAY 30		847	2
MAY 30	TORONTO ONT	364	2
MAY 30		667	2
MAY 31	TORONTO ONT	362	2
MAY 31	TORONTO ONT	362	2
JUN 1	HOUSTON TEX	224	2
JUN 1	WHITEHORSE YT	668	2

YOUR TELEPHONE NUMBER
685 4321

DATE OF BILL
JUN 20, 1973

MIN	CALLS FROM	AMOUNT
6	REGD	5.70
41	REGD BRIL	38.95
9	WR / C.G.	10.05
7	WR / die	8.05
2	WR / N.J.	4.25
4	WR / MS	1.10
3	WR / MESSY	4.25
10	WR /	11.00
3	WR / MS	.84
9	WR /	10.05
5	REGD AR	6.25
6	WHITEHORSE YT	7.10
3		.80
4	T.A. / REGD	2.60
1		2.85
21	WHITEHORSE YT	20.10
18	WHITEHORSE BC	11.90
1	REGD / SOUTH CANADA	.05
9	WHITEHORSE YT	9.95
1	REGD / LAMSON	.95
33	REGD / LAMSON	33.25
2	REGD / CRUDE	2.60
2		2.85

PLEASE SEE REVERSE SIDE FOR EXPLANATION

OF LONG DISTANCE CALLS.

tear
slit here

CASHIER STUB

If payment of this bill has been paid or is being adjusted, please deduct and pay balance. Payment may be made at our business offices or payment agencies.



IMPORTANT

detach and show to cashier showing Telephone Amount with your payment

FOR INQUIRIES CALL BUSINESS OFFICE TELEPHONE NUMBER

TELEPHONE COMPANY

* DIAL OPERATOR

YOUR TELEPHONE NUMBER

AMOUNT DUE

BRITISH COLUMBIA TELEPHONE COMPANY

DATE OF BILL
JUN 20, 1973

ATLAS EXPLORATNS LTD
C/O DYNASTY
EXPLORATIONS LTD
328 355 BURNARD
VANCOUVER 1 BC

YOUR TELEPHONE NUMBER
685 4331 3
VANCOUVER
PREVICUS BILL
PAYMENT # 2
PAYMENT # 2

2010.40
1184.01 CR
826.39 CR
346.45
3.60
38.70
2.00
2.00
3.00

AMOUNT

RENTAL FROM JUN 20 TO JUL 20
FRM JUN 20 TO JUL 20 TAX FREE

ADVERTISING, VANCOUVER DIRECTORY

MAY 23 DIRECTORY PURCHASE
MAY 25 DIRECTORY PURCHASE
JUN 19 DIPECTGY PURCHASE

	CALLS TO	NUMBER	TY	MIN	CALLS FROM		
MAY 1	WHITEHORSE	YT 667 5437	L	3		4.25	93-04
MAY 3		992 5181	4L	3	CARMAKS YT	4.40	151-21
MAY 8	ATLIN	BC 890 0721	9K	2		3.85	101-21
MAY 9		890 0000	4K	3	ATLIN BC	3.85	151-21
MAY 13	WHITEHS	YT 667 5256	L	3	NR / MR TAYLOR	4.25	102-21 KAZA
MAY 14	PR GEN	BC 462 9073	2T	3	VANCOVER BC	2.85	141-21
MAY 18	WHITEHS	YT 668 2177	L	6	GG. / HANKINS	7.10	151-21
MAY 19	PCSSAVER	YT 969 0040	T	9	NR / S. ROLLS	7.45	93-04
MAY 22	PCSSAVER	YT 969 0023	2S	7	VANCOVER BC	5.10	91-20
MAY 22	TORONTO	DNT 485 4626	OK			0.95	136-21
MAY 22	WHITEHORSE	YT 668 2101	OK		LEW / TAYLOR (HA - NORTHWEST) AVIATION	3.80	

PLEASE SEE REVERSE SIDE FOR EXPLANATION OF TYPES OF LONG DISTANCE CALLS.

CASHIER STUB

If any part of this bill has been paid or is being adjusted, please deduct and pay balance. Payment may be made at any of our business offices or payment agencies.

IMPORTANT
WHEN REMITTING BY MAIL Please detach this stub showing telephone number and Amount and mail with your payment

FOR INQUIRIES CALL
BUSINESS OFFICE TELEPHONE NUMBER

B.C. TELEPHONE COMPANY

* DIAL OPERATOR

YOUR TELEPHONE NUMBER

AMOUNT DUE
AMOUNT PAID

tear stub here



TRU NO. 011-288289

EQUIP. NO. 39/8 C.F. BILLING DATE XX JUNE 1/73

CHARGES SUBJECT TO TARIFFS IN EFFECT AT DATE OF BILLING

CONSIGNEE ACME LABS		STREET ADDRESS 6455 LAUREL ST		DESTINATION BURNABY B.C		DEST CODE 090
SHIPPER DYNASTY EXPLORATION		STREET ADDRESS SMITHEFS B.C		ORIGIN CODE 040	ACCT CODE 11	
ROUTE (CARRIERS' NAMES, INTERCHANGE POINTS, PHO NOS. AND BILLING DATES) X BOL 40/128404 MAY 31/73			SHIPPER'S NO.	C.F. REVENUE 10.80		ADVANCE OR BEYOND
NO. PCS.	DESCRIPTION OF ARTICLES AND MARKS	WEIGHT	RATE	FREIGHT	C.O.D.	TOTAL CHARGES
7	CARTON SOIL SAMPLES BILL SHIPPER AT ROOM 330 355 BURNARD ST VANCOUVER B.C	150	M	10.80		10.80 PPD

7	7 this soil samples	150				
	KAZA PROJECT					
	Charge Dynasty Exploration					
	Vanouver B.C					
	Room 330					
	355 Burnard St					
	(10.80)					

AGENT

(SIGNATURE OF AGENT OR CARRIER)

CHARGES ADVANCED:

\$

C.O.D.
CASH ON DELIVERY

Amount \$

Fee \$

Total \$

SHIPPER TO CIRCLE IF PREPAID OR COLLECT →
If not Indicated the Shipment will Automatically Move Collect

PREPAID **COLLECT**

DECLARED VALUATION

Shipper *Dynasty Exploration* Carrier *C.F.L.*
P *P. Dean* Per *Hamilton* Date *5-31-73*

DEAKIN EQUIPMENT LTD.

833 POWELL STREET, VANCOUVER 4, B.C.
TELEPHONE: 253.2685

3639

INVOICE NUMBER

No 4907

cm

INVOICE

S
C
I
D
T
C
 Dynasty Exploration Ltd
 330-355 Burrard St
 Van. B.C.

S
H
I
P
T
O

SHIPPING AND INVOICE DATE May 17/73	SHIPPED VIA Can. Int	PPD. COLL. <input type="checkbox"/>	PPD. CHG. <input type="checkbox"/>	TERMS: 10, 10 DAYS NET 30	YOUR ORDER NO. 4649-A	DATE ORDERED May 10/73
--	-------------------------	-------------------------------------	------------------------------------	---------------------------------	--------------------------	---------------------------

QTY	QTY. ORDERED	DESCRIPTION	QTY. SHIPPED	UNIT PRICE	AMOUNT
		prepaid shipping charges to Smith Pr no 090353926			32.55
		102-22		32.55	
				32.55	
		Cr			

FEDERAL TAX VCL. <input checked="" type="checkbox"/> EXCL. <input type="checkbox"/>	FEDERAL TAX NO.	PROVINCIAL TAX LIC. NO.	TOTAL	32.55
			PROV. TAX	-
			AMOUNT DUE	32.55

CUSTOMER COPY

DATE	NATURE OF EXPENDITURE (Receipts must be attached)	NAME OF JOB OR PROPERTY CHARGED	AMOUNTS
MAY 9	balance from previous account		68 62
MAY 10	charge for travellers cheques	KAZA 102-21	✓ 9 00
MAY 12	paddocks, fisher, etc.	FYRE 103-21	✓ 4 76
15	P. Maser Taxi to airport	KAZA 102-22	✓ 5 35
15	B. Howard TAXI (Prince George)	" 102-22	✓ 4 95
15	B. HOWARD AIRFARE (PB. → Smiths)	" 102-22	✓ 27 00
15	snack	" 102-21	✓ 65
15	Food	" 102-21	✓ 1 65
15	PWA air freight	" 102-22	✓ 19 34
15	TIP FOR Dinner in Smiths	" (no receipt) 102-21	✓ 2 00
15	PWA OVERNIGHT	KAZA 102-22	✓ 16 20
15	TAXI (DEAN → AIRPORT)	" 102-22	✓ 6 00
16	Food	" 102-21	✓ 156 13
16	Food	" 102-21	✓ 21 90
16	Food	" 102-21	37 21
16	equipment	" 102-21	4 20
16	Food Food	" 102-21	11 53
16	Food	" 102-21	15 42
16	Food	" 102-21	1 44
16	Food	" 102-21	5 67
May 30	4 lunches (no receipt)	" 102-21	9 55
30	STAMPS (no receipt)	" 102-21	0.85
30	Snack	" 102-21	1.40
			431 35
	Camp - supplies	14.05	431 35
	- food	265.08	
	Transport - General	78.84	
		357.97	

AMERICAN EXPRESS TRAVELERS CHEQUES
PURCHASER'S APPLICATION

QUAN.	Denomination	AMOUNT	CHEQUES NUMBERED		
			SERIES	FROM	TO - INCL.
	\$10 £2				
	\$20 £5				
8	\$50 £10	400.00	411 993-	631	631
5	\$100 £20	500.00	46 194-	283	287
	\$500 £50				
TOTAL		900.00	RATE	DATE 10/24/73	

PURCHASER'S COPY

YOUR RECORD OF TRAVELERS CHEQUES SPENT			
AMOUNT	LAST 3 FIGS. OF CHEQUE NO.	DATE SPENT	WHERE SPENT
900 charge 102-21			
CARRY THIS RECORD SEPARATELY FROM CHEQUES			

DATE May 15/73

RECEIVED FROM B. Howard

THE SUM OF 4.95

TAXI FARE FROM P.B. to Airport

To [Signature]

DRIVER [Signature] CAR NO. 102-22


Received from P. MASER

\$ 535 From 2050 W4

To AIRPORT

Date MAY 15/73 Car No. 92

102-22 Driver N. Nowicki

 **MAY 15 1973**

GUEST RECEIPT

AMT 4.95

ADDRESS [Signature]

CASH PAID

EAKI 10.00 DINNER

AMOUNT 65

102-21

PASSENGER TICKET AND BAGGAGE CHECK PASSENGER COUPON

FORM 1 904 776

ISSUED BY **PACIFIC WESTERN AIRLINES**
VANCOUVER, CANADA

SUBJECT TO CONDITIONS OF CONTRACT ON BACK COVER

BAGGAGE	RESERVATIONS					FARE BASIS
	Pcs	Weight	Flight	Date	Time	
4	653	15	MAY	215	P	Y

ENDORSEMENTS

102-22

DATE AND PLACE OF ORIGINAL ISSUE: **MAY 15 1973**

NAME OF PASSENGER: **HOWARD/B**

TERMS OF PAYMENT: **CASH**

NOT GOOD FOR PASSAGE

DATE AND PLACE OF ISSUE OF THIS TICKET: **MAY 15 1973**

PRINTED IN CANADA

CARRIAGE hereunder is subject to the rules relating to the liability established by the Convention for the Unification of Certain Rules relating to International Carriage by Air signed at WARSAW, October 12th, 1929, unless such carriage is not "international carriage" as defined by said Convention.

0320 102-21

102-21

DATE	NATURE OF EXPENDITURE (Receipts must be attached)	NAME OF JOB OR PROPERTY CHARGED	AMOUNTS
MAY 21	ACC. RECEIVABLE	91-23	29.75
A. 2 2	GSC MAPS	SCULLY 141-21	110.95
" "	" "	FYRE } 103-21	6.30
MARCH 6	STATIONERY	FYRE	2.47
M 1 7	POSTAGE STAMPS	1/4 KAZA 3/4 FYRE 102-21 1.00	4.00
7	GSC MAPS	FYRE 103-21	7.35
7	FREE MINER'S CERTIFICATE (2 YRS)	KAZA } 102-21	10.00
7	20 CLAIM TAGS	KAZA }	5.00
⊗	CALCULATOR	OFFICE EQUIPMENT 103-21	88.80

168.62

| |

00 T
 3.75 +
 91-23 3.75 T
 141-21 40.95 +
 40.95 T
 6.30 +
 2.47 +
 3.00 +
 7.35 +
 88.80 +
 103-21 107.92 T
 1.00 +
 10.00 +
 5.00 +
 102-21 16.00 T
 3.75 +
 40.95 +
 107.92 +
 16.00 +
 168.62 T

12-061 <100.00>
 91-23 3.75
 102-21 16.00 ✓
 103-21 107.92
 141-21 40.95
 68.62
 CR

/ /

DATE	NATURE OF EXPENDITURE (Receipts must be attached)	NAME OF JOB OR PROPERTY CHARGED	AMOUNT
24 May	snack	FIRE KAZA	(1) 2 85
"	meal	" "	(2) 1 35
"	meals	" 102-22	(3) 6 00
"	meal	" "	(4) 4 35
1 June	maps (GSC)	FIRE 103-21	(5) 4 00
"	diners	"	(6) 14.25
"	diners	" 103-22	(7) 14.80
2 June	meals	"	(8) 9 40
31st May	accomodation	KAZA 102-22	(9) 34 35
2 June	advance to Peter Maser	12-016	20.00
2 June	groceries	FIRE 103-21	(10) 52 19
"	envelopes & bandaids	"	(11) 1 87
"	bakery (cookies & buns) No receipt	"	1 65
"	advance to Peter Maser	12-016	20.00
7 June	meals	103-22	(12) 34.60
10 June	airfare Wiso → Van	103-22	(13) 83 00
17 June	taxi	103-22	(14) 5.00
19 June	Liberty Parking (no receipt)	103-22	2.00
			<u>311 66</u>

RECEIPTS SENT
2 June

RECEIPT SENT
2 June

SLUMBER LODGE MOTELS

HEAD OFFICE: 775 COLUMBIA STREET WEST, KAMLOOPS, B.C.
 REGARDLESS OF CHARGE INSTRUCTIONS THE UNDERSIGNED ACKNOWLEDGES
 A PERSONAL INDEBTEDNESS.

COMM. NO. _____ FIRM _____

MASER / SIHOTA

MAKE OF CAR _____ LICENCE NUMBER _____

RECEIPT # **33-335** **PIPPARD ST** CITY **VAN.** PROV. _____

	SUN.	MON.	TUES.	WED.	THURS.	FRI.	SAT.	TOTALS
DATE					31-5-73			
ROOM					15.00			15.00
TAX 5%					75			75
PHONE								
LAUNDRY								
MEALS								
MEALS								

ROOM NO. 38	CASH	PHONE METER	
		OUT	
NO. IN PARTY 2	CHARGE	IN	135-
		NO. OF CALLS	

TOTAL CHARGES		15	75
ADVANCE PAYMENT	RECEIPT NUMBER		
BALANCE			
FOR CHARGES ONLY		CREDIT CARD # _____	

SIGNATURE _____

SLUMBER LODGE SMITHERS, BOX 1067, B.C.

SLUMBER LODGE MOTELS

HEAD OFFICE: 775 COLUMBIA STREET WEST, KAMLOOPS, B.C.

REGARDLESS OF CHARGE INSTRUCTIONS THE UNDERSIGNED ACKNOWLEDGES THIS BILL AS PERSONAL INDEBTEDNESS.

DYNASTY EXPLORATIONS 1067

COMM. NO. _____ FIRM _____

NAME **PETER DEAN / BRIAN HOWARD**

MAKE OF CAR _____ LICENCE NUMBER _____

STREET **330-35 BURKARD ST.** CITY **UPPER MERVUE** PROV. _____

	SUN.	MON.	TUES.	WED.	THURS.	FRI.	SAT.	TOTALS
DATE					31-5-73			
ROOM					15.00			15.00
TAX 5%					75			75
PHONE					2.65	20		22.65
LAUNDRY								
MEALS								
MEALS								

ROOM NO. 37	CASH	PHONE METER	
		OUT	89
NO. IN PARTY 2	CHARGE	IN	1084
		NO. OF CALLS	1

TOTAL CHARGES		15	60
ADVANCE PAYMENT	RECEIPT NUMBER		
BALANCE		34	35
FOR CHARGES ONLY		CREDIT CARD # _____	

SIGNATURE _____

SLUMBER LODGE SMITHERS

meals 14.55
 accomodation 34.35

Peter Dean Expenses rec'd.

INVOICE NO.

V-12211



VANCOUVER 6,
1001 EAST PENDER STREET

June 7th, 1973

DYNASTY EXPLORATIONS LIMITED,
#350-355 Burrard Street,
Vancouver, B.C.

PAID
JUN 11 1973

IN ACCOUNT WITH

GENERAL TESTING LABORATORIES DIVISION,
SUPERINTENDENCE COMPANY (CANADA) LTD.

Code No: 90-70210

7306-0551

TO: Assaying submitted ore samples, marked from 3D-17 to
3D-32

6 Cu, Au & Ag

@ 8.50

TO YOUR DEBIT

\$ 51.00

KAZA

102-08

51.00

102-08

51.00

Cr

Control Sur.
Control - 10.
V. 10. 10. 10.

KAZA
CORPORA
P. DETA

CAB 000.50 :-
CAB 000.50 :-
CAB 000.50 : 2
CAB 000.50 : 2
CAB 000.50 : 2
CAB 000.50 : 2
CAB 003.00 :

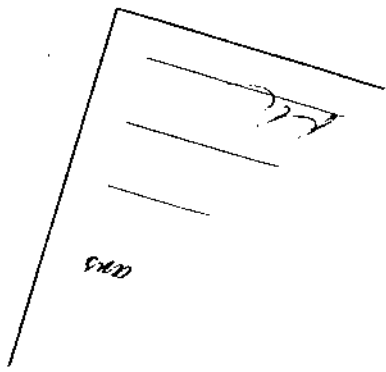
CAB 000.15 IX :

CAB 003.15 :

ATB 004.00 ::

CAB 000.85 CG :

THANK YOU



NOT GOOD FOR PASSAGE
HARRISON AIRWAYS LTD.
 AUDIT COUPON

273-3131

RWAYS LTD.

ouver International Airport, B. C.

CF - CPX Pilot SPENCE, D Date MAY 31
 Chartered to DYNASTY EXPLORATIONS
 Address 355 BURRARD ST VAN

Invoice No **7615**

Order No.

Please return One Copy
 with remittance.

From	To	No. of Pass.	W.T.	Hrs.	Miles
<u>SMITHERS WHITEHOUSE 4</u>					
<u>INCIDENTAL RATE</u>					
Passenger Miles				Total H/M	

PAX INCIDENTAL RATE
 Fare: Miles @ \$ 498.00
 Fare: Hours @ \$
 Plus:
 Waiting Time: @ \$
 Extra Landings: @ \$
 Other: 6:11:35 FRT INCIDENTAL \$ 294.00
 PAID CHARGE TOTAL CHARGE 792.00

AMOUNT	
	\$792.00

This ticket is expressly subject to the conditions printed on the reverse side of ticket.

NAME OF PASSENGER	Passengers Acceptance of Conditions as printed on reverse side
<u>AS PER</u>	
<u>COMPANY</u>	
<u>MANIFEST</u>	

P. Deon
 I hereby authorize the above charges

No **3008**



11-1415

FORM 200 RCN 10 R

GOVERNMENT OF THE PROVINCE OF BRITISH COLUMBIA
DEPARTMENT OF LANDS, FORESTS, AND WATER RESOURCES
SURVEYS AND MAPPING BRANCH

VICTORIA, BRITISH COLUMBIA, 25 June, 1973

Your request is acknowledged.
To do we have received no payment for 5 air
photo req'n # 7853. Please remit below amount.
In future all orders must be pre-paid.

Please remit \$ 1.25. This order will go into effect when payment is received.
Delivery approx. 5 days.

Payment to be made to the Minister of Finance.
PLEASE RETURN THIS CARD WITH REMITTANCE.

MP 12

102-21 5 A 1
5 2 1
C 2



OKANAGAN HELICOPTERS LTD.

HEAD OFFICE
439 AGAR DRIVE
INTERNATIONAL AIRPORT SOUTH
VANCOUVER, B.C.
TELEPHONE (604) 278-5502 TELEX 04-5088 83
CHARTERER'S BILLING ADDRESS

Dynasty Exploration Ltd.

330 - 355 Burrard St.

Vancouver B.C.

ACCOUNT NUMBER	18721			78918				
INVOICE DATE	0110673			FLIGHT DATE	DAY	MONTH	YEAR	TYPE OF FLYING
A/C TYPE	200B			BASE	Smithers			BASE NO
TYPE OF CONTRACT - X	HOURLY			FLIGHT LOCATION	Smithers			FLIGHT LOCATION
IND. CLASS	03			PILOT 1	Bloomfield			PILOT 1
AIRCRAFT REG NO. C7	040			PILOT 2				PILOT 2
STATE OF AIRCRAFT - X				UNSERVICICEABLE				STORED

FUEL & OIL - X	FLYING HOURS ACCORDING TO FUEL USED				PURCHASE ORDER NO.			
<input checked="" type="checkbox"/> O.K.	CUST	O.M.L.		CUST				

OPERATION	TAKE-OFF	LAND	FLYING TIME
<i>Smithers - Kozu Lakey Mass</i>			
<i>Horizon Camp out to Bulkeley House.</i>			
<i>B.T. Smithers</i>			<i>2.4</i>

ARE NOT 30 DAYS - interest of 1% per
e charged if not paid within 30 days."

ACCOUNT	AMOUNT
<i>102-22</i>	<i>628.80</i>

ENTR	AMOUNT	NON-REV. HRS.	REVENUE HOURS	TARIFF	AMOUNT
			<i>2.4</i>	<i>250.00</i>	<i>600.00</i>
		<i>FUEL:</i>	<i>2.4 HRS.</i>	<i>@ 12.00</i>	<i>28.80</i>

TOTAL	<i>628.80</i>		
ADDS. + EXTENS.	CODING	O.K. TO PAY	POSTED
	<i>CR</i>		

SIGNED FOR OKANAGAN HELICOPTERS LTD. BY
[Signature]

EXTRA CHARGES OR ADJUSTMENTS	NO. OF PASSENGERS	TOTAL
	<i>4</i>	<i>\$ 628.80</i>
FREIGHT LBS.	<i>800</i>	

INVOICE

OHL - 017/872-25



OKANAGAN HELICOPTERS LTD.

HEAD OFFICE
439 AGAR DRIVE
INTERNATIONAL AIRPORT SOUTH
VANCOUVER, B.C.
TELEPHONE (604) 278-5502 TELEX 04-5088 83
CHARTERER'S BILLING ADDRESS

Dynasty Exploration Ltd.
330 - 355 Burrard St.
Vancouver B.C.

ACCOUNT NUMBER	18721			78898			
INVOICE DATE	3.010.573	FLIGHT DATE	1/6/05	MONTH	7	YEAR	3
A/C TYPE	206 B		BASE	Smithers			
TYPE OF CONTRACT - X	HOURLY		BASE NO.	170			
IND CLASS	03	AIRCRAFT REG. NO. CF.	FLIGHT LOCATION	Smithers			
STATE OF AIRCRAFT - X	UNSERVICABLE		PILOT 1	Bloomfield			
STATE OF AIRCRAFT - X	STORIED		PILOT 2	364			

FUEL & OIL - X	FLYING HOURS ACCORDING TO FUEL USED				PURCHASE ORDER NO.			
CH LIX	CUST	O.H.L.	CUST					

OPERATION	TAKE-OFF	LAND	FLYING TIME
Smithers - Kuzu Lake - Bulkley House -			
Kuzu Lake - Bulkley House - Kuzu Lake -			
Smithers			
1 Trip Bulkley House - Fuel tanking for fuel.			3.0

ACCOUNT	AMOUNT
102-22	786.00
TOTAL	786.00
DDS. + EXTENS.	
CODING	
O.K. TO PAY	
POSTED	

AMOUNT	NON-REV. HRS.	REVENUE HOURS	TARIFF	AMOUNT
		3.0	250.00	750.00
	FUEL: 3.0	HRS. @ 12.00		36.00
EXTRA CHARGES OR ADJUSTMENTS				
NO. OF PASSENGERS			TOTAL	\$ 786.00
FREIGHT LBS.			OHL - 017/872-25	

SIGNED FOR OKANAGAN HELICOPTERS LTD. BY: *[Signature]*

PACIFIC WESTERN AIRLINES LTD.

AIR BILL NON-NEGOTIABLE

(THIS SECTION TO BE COMPLETED BY CARRIER)
 ORIGINATING STATION CODE **227-** AIRBILL NUMBER **863672**

As described are accepted in apparent good order (except as noted) for transportation as specified herein, subject to governing tariffs and conditions of the rates hereof which are filed in accordance with law. Said classifications and tariffs which are available for inspection at all times, are hereby incorporated into and made a part of this contract.

BY (CONSIGNOR) CONSIGNOR'S STREET ADDRESS			TO (CONSIGNEE) CONSIGNEE'S STREET ADDRESS		
CITY	ZONE	PROV.	CITY	PROV. OR STATE	COUNTRY
BY		CONSIGNOR'S NO.	DESTINATION AIRPORT (CITY)	CONSIGNEE'S NO.	
<input checked="" type="checkbox"/> NOTE CONDITION OF CARRIAGE ABOVE <input checked="" type="checkbox"/> DECLARED VALUE \$ 14.24			Agreed and understood to be not more than the value stated in the governing tariffs for each pound on which charges are assessed, unless a higher value is declared and applicable charges paid thereon.		
RECEIVED BY CARRIER AT (CHECK ONE)			DELIVERY Will be made to the Consignee at points where delivery service is available unless otherwise specified below.		

<input type="checkbox"/> CONSIGNOR'S DOOR	<input type="checkbox"/> CITY TERMINAL	<input type="checkbox"/> AIRPORT TERMINAL	<input type="checkbox"/> CITY TERMINAL	<input type="checkbox"/> AIRPORT TERMINAL	<input type="checkbox"/> CASH (CHECK TWO)	<input type="checkbox"/> CHARGE	<input checked="" type="checkbox"/> PREPAID	<input checked="" type="checkbox"/> COLLECT
NO OF PIECES	DESCRIPTION OF PIECES AND CONTENTS	WEIGHT	AIRLINE ROUTING		RATE	CHARGES		
3		2.2	TO	VIA A LINE				
1								

INSTRUCTIONS TO CARRIER: **102-22 1424**

SUMMARY OF CHARGES		PREPAID CHARGES	COLLECT CHARGES
WEIGHT-RATE CHARGES			14.24
PICK UP CHARGE			
DELIVERY CHARGE	Boys		
TOTAL			14.24

Important CARRIER WILL COMPLETE ALL ITEMS BELOW BOLD LINE EXCEPT CONSIGNOR'S C.O.D. WEIGHTS ARE SUBJECT TO CORRECTION

RECEIVED IN GOOD ORDER EXCEPT AS NOTED

CONSIGNEE: **CA Malik**

DATE: **6/1/53** TIME: **4:15**

ACCOUNT	AMOUNT
102-22	14.24
	14.24
	14.24
TOTAL	14.24
ADDS. + EXTENS.	
CODING	
O.K. TO PAY	
POSTED	

RECEIVED IN APPARENT GOOD ORDER EXCEPT AS NOTED. BY PACIFIC WESTERN AIRLINES LIMITED

AGENT: **[Signature]**

AT: **[Signature]** DATE: **6/1/53** TIME: **10:30 P.M.**

FREIGHT

4

CONSIGNEE'S COF

[Signature]

(AUTHORIZED REPRESENTATIVES)
 PRINTED IN CANADA
 P.W.A. 227-C
 PRINTED IN CANADA
 P.W.A. 227-C

SMITH TRAVEL CENTRE LTD.

1252 BURRARD STREET (near Davie), VANCOUVER 1, B.C.

TELEPHONE 687-0191

May 11 1973

Dynasty Expeditions
330-355 Burrard St.
Vancouver, B.C.

AIR FARE: VANCOUVER TO		SMITHERS				
PW 221	4200	252	455	for Mr. P. Dean	53	-
PW 227	4200	252	456	for Mr. P. Sihota	53	-
PW 227	4200	252	459	for Mr. P. Maser	53	-
102-22		159.00				
		KAZA.				
		159.00				
CREDIT	CASH	CHARGE	CHEQUE	ON ACCT.	PAID OUT	TOTAL
		X				159 -

Nº 2848

RECEIVED BY _____

INTEREST AT 1% PER MONTH CHARGED ON PAST DUE ACCOUNTS

Trans-Provincial Airlines Ltd.

Flt. Report Number	CHARTER AND CONTRACT TICKET	Invoice Number
--------------------	-----------------------------	----------------

Charge to: DYNASTY EXPLORATIONS LTD
3060 MAIN

Date <u>May 16</u>	Cash	Phone
A/C Type <u>BH02</u>	CF- <u>JOS</u>	Warrant or Reg. No.
Base <u>MC LURE</u>	Pilot <u>E. MESSICH</u>	

From: MC LURE To (1) BULKLEY HOUSE
To (2) MC LURE ELIZABETH To (3) BULKLEY HOUSE
To (4) To (5)

FARE <u>160</u>	Miles @ \$ <u>.90</u>	\$ <u>144.00</u>
<u>160</u>	Hours @ \$ <u>.70</u>	
Contract Rate		
Waiting Time @ \$		
Extra Landings @ \$		
Pilot Expenses		
Other		
TOTAL CHARGES		\$ <u>256.00</u>

Authorized By Brian D. Howard

THIS TICKET IS EXPRESSLY SUBJECT TO THE CONDITIONS AND TERMS PRINTED ON THE REVERSE SIDE OF TICKET AND WHICH ARE HEREBY ACCEPTED (PASSENGERS' SIGNATURES)

2nd trip sub for 185

1	
2	8
3	9
4	10
5	11
6	12

No 28552

Trans-Provincial Airlines Ltd.

Flt. Report Number	CHARTER AND CONTRACT TICKET	Invoice Number
--------------------	-----------------------------	----------------

Charge to: DYNASTY EXPLORATION
3060 MAIN

Date <u>May 30</u>	Cash	Phone
A/C Type <u>Beaver</u>	CF- <u>JOS</u>	Warrant or Reg. No.
Base <u>MC LURE</u>	Pilot <u>E. MESSICH</u>	

From: MC LURE To (1) BULKLEY HOUSE
To (2) # To (3)
To (4) To (5)

FARE <u>160</u>	Miles @ \$ <u>.90</u>	\$ <u>144.00</u>
	Hours @ \$	
Contract Rate		
Waiting Time @ \$		
Extra Landings @ \$		
Pilot Expenses		
Other		
TOTAL CHARGES		\$ <u>144.00</u>

Authorized By Brian D. Howard

THIS TICKET IS EXPRESSLY SUBJECT TO THE CONDITIONS AND TERMS PRINTED ON THE REVERSE SIDE OF TICKET AND WHICH ARE HEREBY ACCEPTED (PASSENGERS' SIGNATURES)

1	7
2	8
3	9
4	10
5	11
6	12

No 28570

Amber Room
TYEE MOTOR HOTEL
SMITHERS, B.C.



1200

Room 49 MAY 30 1973

P. Dean

Ch. H. - C. M.

3001 - K. H. - J. H.

TAX

Please Pay Cashier

CHECK NO.	WAITER	GUESTS
108	12	3 1/2

TIP 1.50

13 50

Tyee MOTOR HOTEL LTD.
8th Avenue on Highway 16
P.O. Box 819, Smithers, B.C.

1366

1		02.70	LD
2		03.60	LD
3			
4		06.30	BAL
5		06.30	
6		13.50	ROOM
7		00.68	TAX
8			
9		20.48	BAL
10		20.48	
11		12.00	REST
12		01.50	UNESC
13			
14		33.98	BAL
15		33.98	
16		05.75	REST
17		00.75	UNESC
18		40.48	BAL
19			
20		40.48	
21		07.10	REST
22		00.75	UNESC
23			
24		48.33	BAL

P. Dean

013128

Amber Room
TYEE MOTOR HOTEL
SMITHERS, B.C.



100

140

170

150

P. Dean
Rm 49

TAX

Please Pay Cashier

CHECK NO.	WAITER	GUESTS
51	24	7 1/2

TIP 75

7.85

Amber Room
TYEE MOTOR HOTEL
SMITHERS, B.C.



5 75

MAY 30 1973

Ad B.C.

TAX

Please Pay Cashier

CHECK NO.	WAITER	GUESTS
FRLT	22	1 1/2

TIP 75

1.50

45 ROOM NO. NAME DEAN/HOUPRD

43 ROOM NO. NAME MAIER/SBHC DR

Tyce MOTOR HOTEL LTD.
8th Avenue on Highway 16
P.O. Box 819, Smithers, B.C.

Tyce MOTOR HOTEL LTD.
8th Avenue on Highway 16
P.O. Box 819, Smithers, B.C.

1392 KA2A

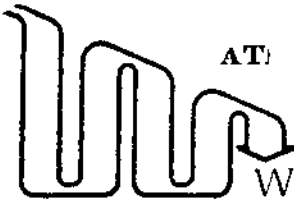
1341 KA2A

1			50.25	REST
2				
3		P	50.25	REST
4			18.25	REST
5			32.00	CRED
6				
7		P	32.00	REST
8			10.50	REST
9			00.53	TAX
10				
11			20.97	CRED
12			20.97	CRED
13			01.90	REST
14			22.87	
15			01.35	REST
16			24.22	BAL
17			17.72	CRED
18				
19				
20		P	17.72	REST
21			17.53	ADJ MISC
22			00.19	REST
23			00.19	REST
24			00.00	CRED

1			13.50	REST
2			00.68	TAX
3			14.18	BAL
4			01.90	REST
5			01.45	REST
6				
7			17.53	BAL
8				
9			17.53	REST
10			17.53	ADJ MISC
11				
12			00.00	BAL
13				
14				
15				
16				
17				
18				
19				
20				
21				
22				
23				
24				

014657

014645



AT

WESTERN REPRODUCERS LTD.

1376 WEST PENDER STREET, VANCOUVER 5, BRITISH COLUMBIA • PHONE: 684-4408
32 WEST 5th AVENUE, VANCOUVER 10, BRITISH COLUMBIA • PHONE: 672-8271

INVOICE

H 20550

TERMS
NET. PAYABLE UPON
RECEIPT OF INVOICE

524 HORNBY STREET, VANCOUVER 1, BRITISH COLUMBIA - PHONE 684-5391 (HEAD OFFICE)

TO

SHIP TO

Dynasty Explorations Ltd.
Rm 330 - 355 Burrard
Vancouver, B.C.

2327

DATE	YOUR ORDER NO.	FED. TAX NO.	PROV. TAX NO.	DATE REQUIRED	DATE SUPPLIED	
Mar 8/73						
QTY	DESCRIPTION	CODE	UNIT	QUANTITY	PRICE	AMOUNT
1	4 of em 36x55 ESO to Bond P. Deon KAZA	11	104	4	.90/4	\$ 9.00
1	4x5 c/t copy neg 16x18 cronaflex FYRE LAKES	60A 615	2.25		\$ 2.25	4.00 6.19
	102-21 956					19.19
	201-004 1300					
	2252					
AUTHORIZED BY P. Deon				RECEIVED BY P. Deon		FED. TAX 2.30
						PROV. TAX 1.07
						TOTAL \$ 22.56

M4

KAZA PROJECT CLAIM WAGE COSTS

SCHEDULE "A"

EMPLOYEE					TOTAL	WIRE CUTTING	GEOLOGY	GEOPHYSICS	GEOCHEM	REPORTS
P.M. Dean	Geologist	5 1/2 days @ \$1000/month			213571		190000			23571
B. Howard	Field assistant	54 days @ \$1100/month			39186	19593			19593	
P. Maser	Field assistant	18 days @ \$21.77/day			36288				36288	
P. Sihota	Geol. assistant	18 days @ \$20.16/day			39492		19746	19746		
					328537	19593	209746	19746	55881	23571
NON WAGE LABOUR COSTS @ 12%					394.25	2351	25170	2369	6706	2829
VERSATILE PERSONNEL LTD										21463
SOLTAN KERESZTES DRAFTSMAN		73 hrs @ \$7.50/hr.			547.50					547.50
					4277.12	21944	234916	22115	62587	81150