

GEOLOGICAL AND GEOCHEMICAL SURVEY
REPORT ON THE TRIM MINERAL CLAIMS FOR
GRANDORA EXPLORATIONS LTD. (NPL)
CREAM SILVER MINES LTD. (NPL) AND
JUNIPER MINES LTD. (NPL), TRIMBLE CREEK
LIARD MINING DIVISION, B.C.

TRIM 42, 44, 46, 48, 50, 52, 54, 56,
58, 60-80

94G/4E, 5E

Situated on Trimble Creek, 1.5 miles
southwest of Trimble Lake, 128 miles
northwest of Fort St. John, Liard
Mining Division.

57°15'N 123°39'W

Submitted by: D.P. Taylor, geologist

Owners: Grandora Explorations Ltd. (NPL)
Cream Silver Mines Ltd. (NPL)
Juniper Mines Ltd. (NPL)

Work conducted by: Agilis Exploration
Services Ltd.

4482

4482

GEOLOGICAL AND GEOCHEMICAL REPORT
ON THE TRIM MINERAL CLAIMS
OF GRANDORA EXPLORATIONS LTD. (NPL)
CREAM SILVER MINES LTD. (NPL)
AND JUNIPER MINES LTD. (NPL)
TRIMBLE CREEK, LIARD MINING DIVISION, B.C.

JANUARY, 1973

VANCOUVER, B.C.

Department of
Mines and Petroleum Resources
ASSESSMENT REPORT

NO. 4482 MAP.....

TABLE OF CONTENTS

	Page
INTRODUCTION	1
LOCATION AND ACCESS	1
PHYSIOGRAPHY	2
PROPERTY	2
REGIONAL GEOLOGY	3
PROPERTY GEOLOGY	3
GEOCHEMICAL SURVEY:	
GRID	4
SAMPLING PROCEDURE	4
ANALYSIS	5
RESULTS	5
CONCLUSIONS	6
RECOMMENDATIONS	6
CERTIFICATION	8

MAPS

#1 LOCATION MAP	1" = 110 miles
#2 CLAIM MAP	1" = 3,000 feet.
#3 GEOLOGY	1" = 400 feet
#4 GEOCHEMICAL SURVEY (ZINC)	1" = 400 feet
#5 (LEAD)	1" = 400 feet.

GEOLOGICAL AND GEOCHEMICAL REPORT
ON THE TRIM MINERAL CLAIMS
OF GRANDORA EXPLORATIONS LTD. (NPL),
CREAM SILVER MINES LTD. (NPL),
AND JUNIPER MINES LTD. (NPL)
TRIMBLE CREEK, LIARD MINING DIVISION, B. C.

INTRODUCTION

The Trim mineral claim group comprises 30 contiguous mineral claims situated 1.5 southwest of Trimble Lake, 128 miles northwest of Fort St. John, B. C. The property is jointly and equally owned by Grandora Explorations Ltd. (NPL), Cream Silver Mines Ltd. (NPL), and Juniper Mines Ltd. (NPL).

In August of 1972, a crew of Agilis Exploration Services Ltd. personnel conducted geological and geochemical surveys on the claim group. The work was done under the direct supervision of T. Y. Kim, geologist, who made full written and verbal reports to D.P. Taylor, geologist, author of this report, who has not visited the property.

LOCATION AND ACCESS

The Trim Group lies across Trimble Creek, 1.5 miles southwest of Trimble Lake, 128 miles northwest of Fort St. John in northeastern B. C. The claims are recorded in the Liard Mining

Division and the property is located:

57° 15' N; 123° 39' W.

Access to the property is by float plane or helicopter from Fort St. John.

PHYSIOGRAPHY

The property lies in a north-south trending valley at 4500 feet A.S.L. The valley is generally flat and swampy with some moderately steep sections to the south. The property is bisected by the northeasterly flowing Trimble Creek.

Areas between the swamps are generally covered by dense spruce, pine, and fir bush.

Precipitation in this area is moderate, with snow and freezing conditions in the winter.

PROPERTY

The Trim group comprises 30 contiguous mineral claims owned jointly by Grandora Explorations Ltd. (NPL), Cream Silver Mines Ltd. (NPL), and Juniper Mines Ltd. (NPL). Each company has one third ownership.

<u>Claim Number</u>	<u>Record Number</u>
Trim 42,44,46,48,50, 52,54,56,58	63028,30,32,34,36 38,40,42,44
Trim 60-80	63046-63066

All claims are recorded in the Liard Mining Division, B. C.

REGIONAL GEOLOGY

The Trim group lies over Palaeozoic marine and non-marine sediments within 3 miles of the Mesozoic contact. In the claim area strata range in age from Mid-Devonian to Permian; units are generally northerly striking.

The area is extensively deformed by shallow folding and extensive thrust faulting, structures of deformation strike northerly parallel to the lithology and faults generally dip westward.

The Mid-Devonian carbonates associated with the Robb Lake mineralization, 22 miles south of the claims, outcrops about 1 mile west of the property and should underly the property at relatively shallow depths.

PROPERTY GEOLOGY

Most of the property is covered by swamp and shallow overburden. About 5% outcrop exposure on the property indicates the property to be underlain by one rock type only. Outcrop

is limited to the area of Trimble Creek, in the middle of the property, and the area immediately south of the creek. Outcrop is limited to dark argillite with intercalated sections of calcareous shale. These rocks are believed to be close to the contact of the Upper Devonian Besa River Formation and the Mississippian Prophet Formation.

Attitudes of mapped outcrops are north to N40W striking with dips generally 30° west varying as low as 5° W. The strike tends to move west from north, east to west across the outcrop area.

No mineralization or alteration was noted on the property.

GEOCHEMICAL SURVEY

GRID

A flagged chain and compass grid was established on the property on a baseline put in along the Trim 60-80 claim line. East-west lines were flagged every 800 feet on the baseline, with stations every 200 feet along the lines.

SAMPLING PROCEDURE

Samples were collected wherever possible from B horizon material, 10-14 inches depth, using mattocks. A total of 326 samples were collected and sent to Vancouver in their original kraft envelopes for analysis. Many samples could not be taken due to

swampy conditions, particularly on the northern half of the property.

ANALYSIS

All samples were analysed for ppm lead, zinc, and cadmium content at Core Laboratories-Canada Ltd., 325 Howe Street, Vancouver, B. C.

Samples were kiln dried and a minus 80 mesh fraction was digested in hot acid. Quantitative analysis was conducted using atomic absorption quantitative analysis from a 1 gram digested fraction analysed first for lead.

RESULTS

Survey results were generally low, particularly for cadmium and lead. One high cadmium result of 4 ppm was obtained on the baseline at 24S, otherwise all results were 2 ppm or lower.

Lead results range from 10 to 46 ppm. Of 312 results, only 4 were over 40 ppm. Background for the population is 22 ppm and low anomalous level is 29 ppm. This range is very low and does not give distinctive or meaningful classification to the results. High levels of 40 ppm in a background of 20 ppm are not considered significant in this area.

Zinc results are generally moderate in a high background environment. Results range from 20 to 350 ppm with background

being at 125 ppm zinc. Low anomalous values begin at 180 ppm and the top 2.5%, very highly anomalous, values are those > 240 ppm. Anomalous values are established over the entire property without any concentration.

CONCLUSIONS

The property is underlain by what are believed to be Upper Devonian to Mississippian argillites and calcareous shales. These rocks are northerly to northwesterly striking and dip moderately westward.

Negative results were obtained in lead and cadmium geochemical surveying.

Low anomalous zinc values from geochemical surveying are distributed over most of the property with no evident concentration.

The property is almost certainly, at an undetermined depth, underlain by Mid-Devonian calcareous formations.

RECOMMENDATIONS

The property is not at this time ready for further major expenditures.

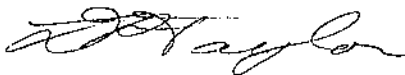
As more becomes known about zinc mineralization in this area

developing knowledge should be applied to the property. It is expected that considerable work will be performed in the area in 1973.

In conjunction with new information, at some time in the future, consideration should be given to conducting a gravity survey over this generally flat, shallowly overburdened property.

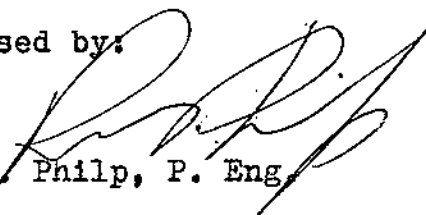
Exploratory core drilling may follow up contingent on results and new information.

Respectfully submitted by:



D.P. Taylor, Geologist

Endorsed by:



R.H.D. Philp, P. Eng.

January 5, 1973

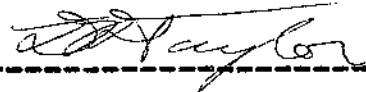
Vancouver, B. C.

CERTIFICATION

I, David Pelham Taylor of Vancouver, B.C. do hereby
certify that:

1. I am an Exploration Geologist residing at
2097 West 6th Avenue, Vancouver 9, B.C.
2. I am a graduate of the Royal School of Mines,
Imperial College, London, M.Sc., D.I.C. 1971.
3. I have practised as an exploration geologist
in B.C. for five years.
4. I have not visited the property subject of this
report but supervised the crew dispatched on the
property, and had full disclosure of the results.

signed,



D.P. Taylor, M.Sc., D.I.C.

May, 1973

Vancouver, B.C.

DOMINION OF CANADA:
PROVINCE OF BRITISH COLUMBIA:
TO WIT:

In the Matter of detailed gridding, claims survey,
geological and geochemical surveys conducted on
the Trim Claims Properties

I, Valerie McKee

of c/o 107-325 Howe Street, Vancouver 1, B.C.

in the Province of British Columbia, do solemnly declare that the following personnel were employed and cost incurred in conducting the surveys during August-September, 1972.

Personnel:

D. Taylor - geologist - office supervisor	3 days @ 100.00/day	300.00
T. Kim - geologist - field	15 days @ 55.68/day	835.20
J. Truhn - field	5 days @ 35.00/day	175.00
R. Timmins - "	16 days @ 33.81/day	540.96
J. Pitcher - "	11 days @ 33.81/day	371.91
B. Talbot - draughting	42 hours @ 8.50/hr	<u>375.00</u>
		2,598.07

Disbursements:

Airfares	204.00	
Helicopter charter	1,059.33	
Truck rental	278.59	
Geochemical testing	622.00	
Supplies, groceries, fuel	891.70	
Camp charges	120.00	
Meals and accomodation	107.86	
Miscellaneous - phone, freight, prints, etc.	<u>80.61</u>	3,364.09
+ 10% service charge on disbursements		<u>336.41</u>
	TOTAL AMOUNT	<u><u>\$6,298.57</u></u>

And I make this solemn declaration conscientiously believing it to be true, and knowing that it is of the same force and effect as if made under oath and by virtue of the "Canada Evidence Act."

Declared before me at the *City*
of *Vancouver*, in the
Province of British Columbia, this *10th*
day of *May*, 1973, A.D.

V. A. McKee

Jan Paul Sub-mining Recorder
A Commissioner for taking Affidavits for British Columbia or
A Notary Public in and for the Province of British Columbia.

In the Matter of

.....

.....

.....

.....

Statutory Declaration
(CANADA EVIDENCE ACT)

.....

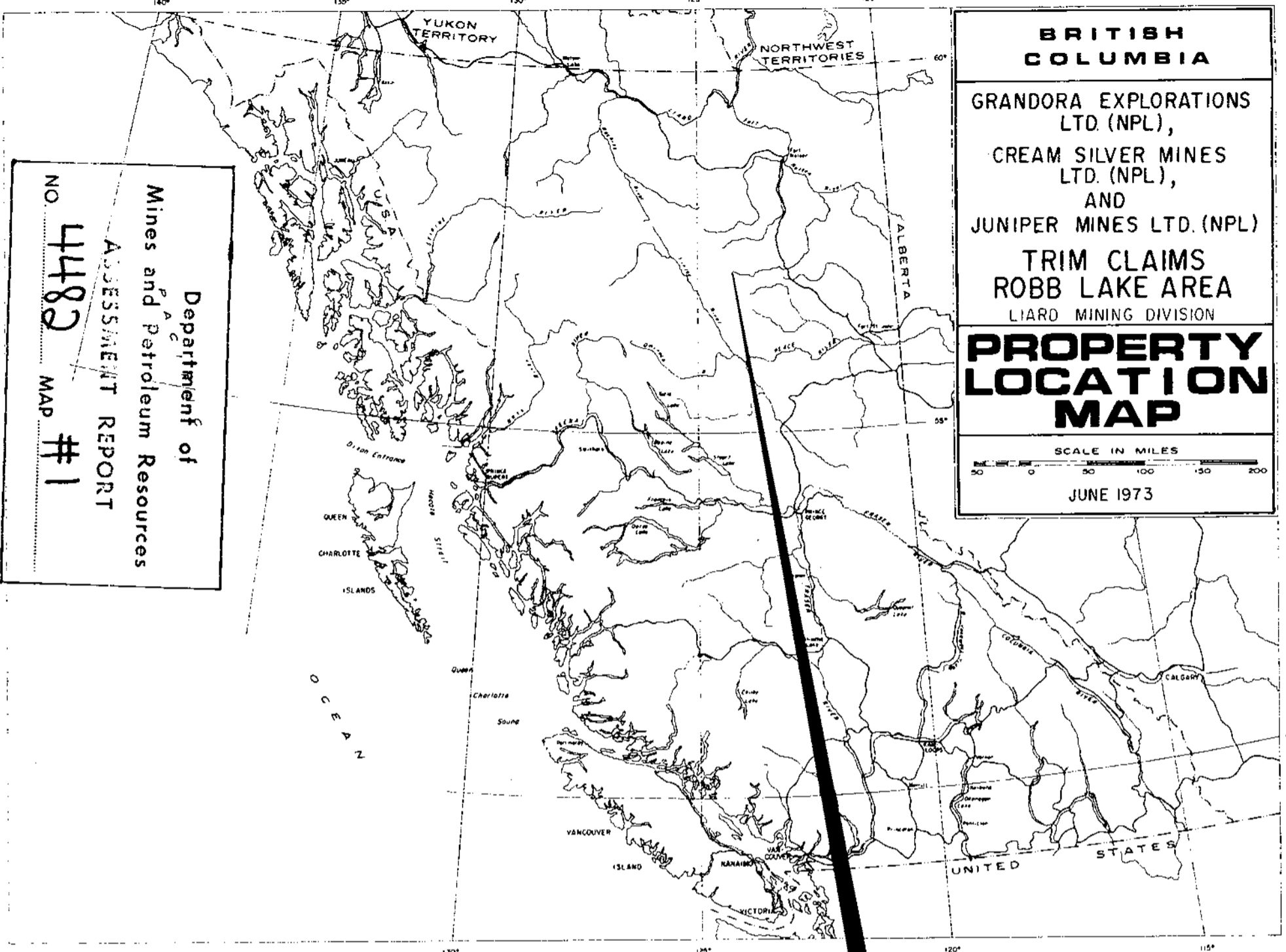
.....

.....

.....

.....

.....



BRITISH COLUMBIA

GRANDORA EXPLORATIONS LTD. (NPL),
CREAM SILVER MINES LTD. (NPL),
AND
JUNIPER MINES LTD. (NPL)

TRIM CLAIMS
ROBB LAKE AREA
LIARD MINING DIVISION

PROPERTY LOCATION MAP

SCALE IN MILES
0 50 100 150 200


JUNE 1973

Department of
Mines and Petroleum Resources

ASSESSMENT REPORT

NO **4482** MAP #1

TRIM CLAIMS



SCALE 1:250,000

R.P.P.

123° 45'



	Trim 79	Trim 80
Trim 60	Trim 77	Trim 78
Trim 58	Trim 75	Trim 76
Trim 56	Trim 73	Trim 74
Trim 54	Trim 71	Trim 72
Trim 52	Trim 69	Trim 70
Trim 50	Trim 67	Trim 68
Trim 48	Trim 65	Trim 66
Trim 46	Trim 63	Trim 64
Trim 44	Trim 61	Trim 62

Department of
Mines and Petroleum Resources
ASSESSMENT REPORT
NO. 4482 MAP #2

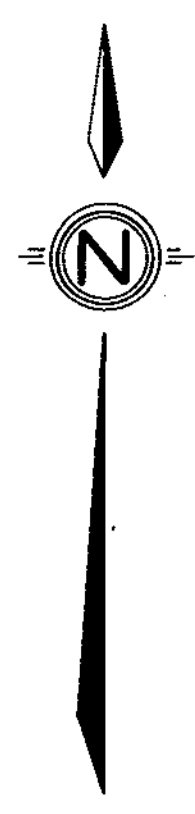
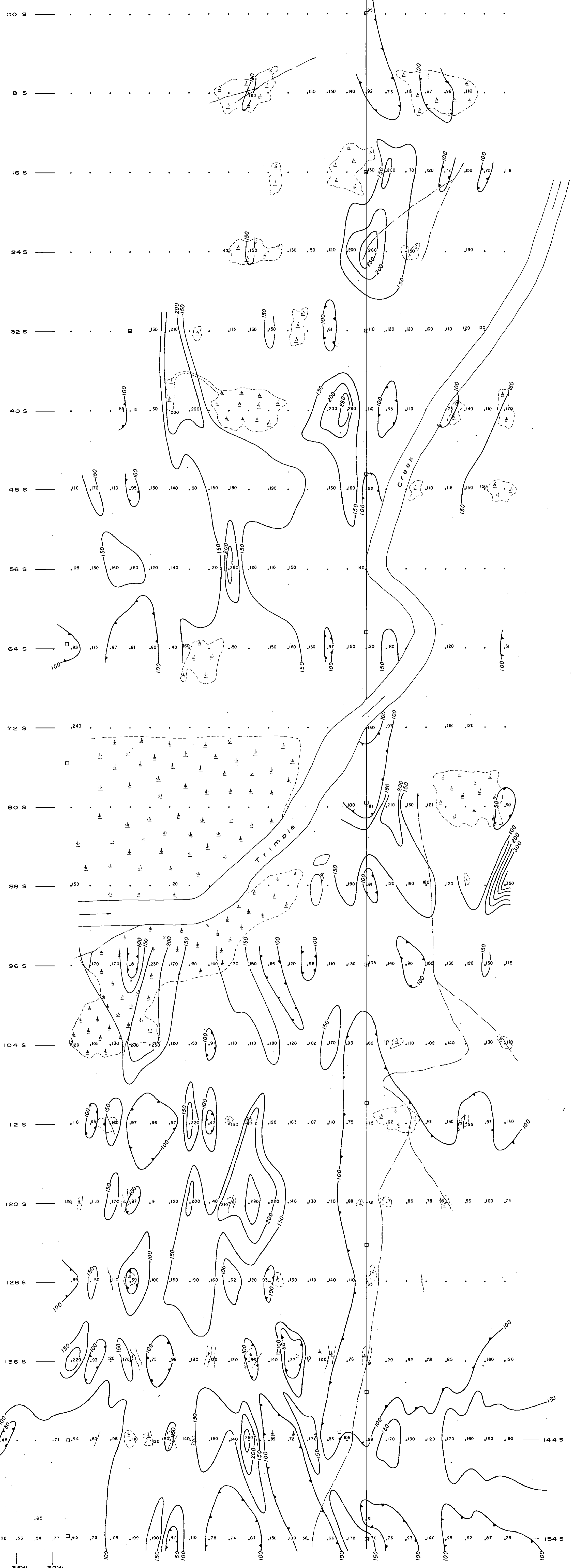
GRANDORA EXPLORATIONS
LTD. (NPL),
CREAM SILVER MINES
LTD. (NPL),
AND
JUNIPER MINES LTD. (NPL)

TRIM CLAIMS - ROBB LAKE AREA

LIARD MINING DIVISION

SCALE 1" = 3000 FEET

28W 24W 20W 16W 12W 8W 4W 4E 8E 12E



4482
MA

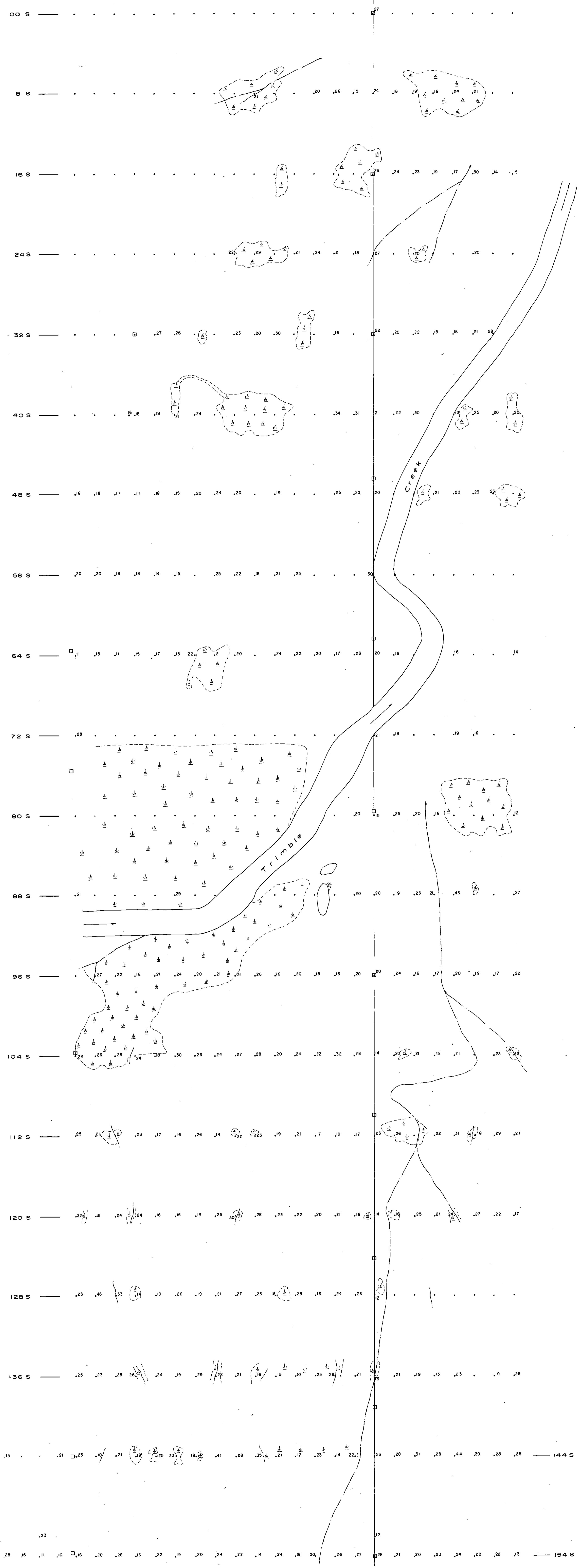
Department of
 Mines and Petroleum Resources
 ASSESSMENT REPORT
 NO. 4482 MAP #4

GRANDORA EXPLORATIONS LTD. (NPL)
 CREAM SILVER MINES LTD. (NPL)
 AND JUNIPER MINES LTD. (NPL)
 TRIM CLAIMS - ROBB LAKE AREA
 LIARD MINING DIVISION B.C.

**GEOCHEMICAL
 SURVEY
 ZINC**

CONTOUR INTERVAL 50 PPM
 SCALE IN FEET
 400 0 400 800 1200
 AGILIS ENGINEERING LTD. JUNE 1973

28W 24W 20W 16W 12W 8W 4W 4E 8E 12E



4482 *PP*

Department of
Mines and Petroleum Resources
ASSESSMENT REPORT
NO. 4482 MAP #5

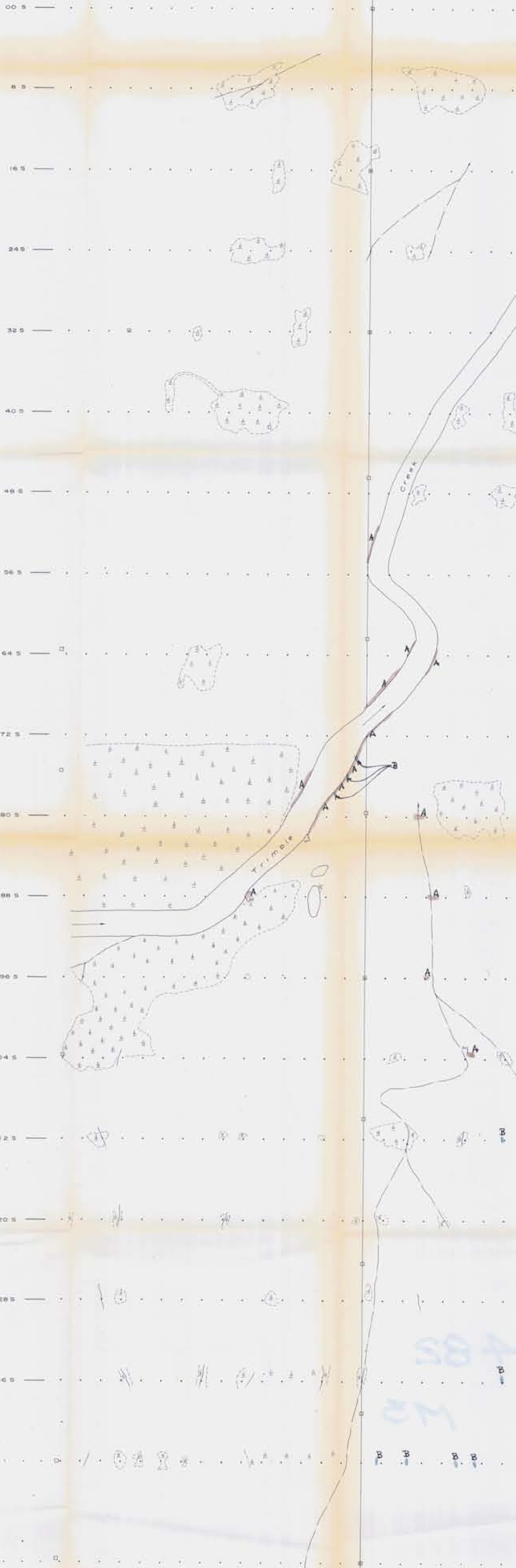
GRANDORA EXPLORATIONS LTD. (NPL)
CREAM SILVER MINES LTD. (NPL)
AND JUNIPER MINES LTD. (NPL)

TRIM CLAIMS - ROBB LAKE AREA
LIARD MINING DIVISION BC

**GEOCHEMICAL
SURVEY
LEAD**

VALUES IN PPM
SCALE IN FEET
400 0 400 800 1200
AGILIS ENGINEERING LTD. JUNE 1973

28W 24W 20W 16W 12W 8W 4W 4E 8E 12E



70
80

90
100

110
120

LEGEND:

- Platy, argillaceous rock, including calcareous shale
- Limestone
- Outcrop
- Gully
- Bedding strike is up

4482

Department of
Mineral and Petroleum Resources
MINING REPORT
NO. 4482 MAP #3

M3

GRANDORA EXPLORATIONS LTD. (NPL)
CREAM SILVER MINES LTD. (NPL)
AND JUNIPER MINES LTD. (NPL)
TRIM CLAIMS-ROBB LAKE AREA
LIARD MINING DIVISION, E.C.

GEOLOGY MAP

SCALE IN FEET
0 200 400 600 800 1000
AGILIS ENGINEERING LTD. JUNE 1973

42W 40W 38W 36W