

LINE CUTTING REPORT

CLAIMS: MUREX, ENA, PEARL, RONDO, GEM

OWNER; IMPERIAL OIL LIMITED

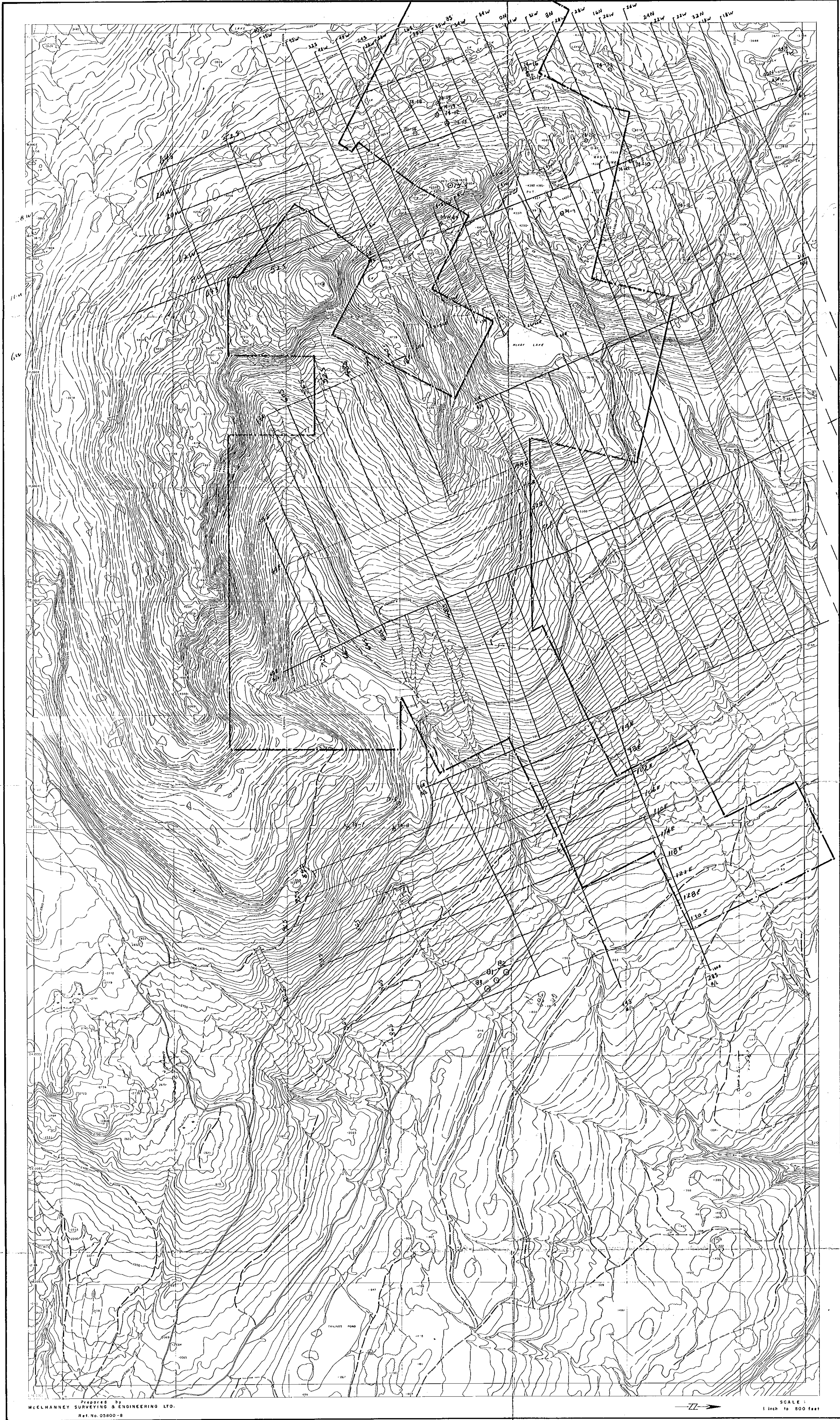
WORK DONE: 1972

NANAIMO MINING DIVISION

92F/11,14

4505

765



BOUNDARY OF CLAIM GPA

SUB-MINING RECORDER
RECEIVED
JUL 30 1973
MR. ROSE
VANCOUVER, B. C.

—— checked lines
- - - unchecked lines

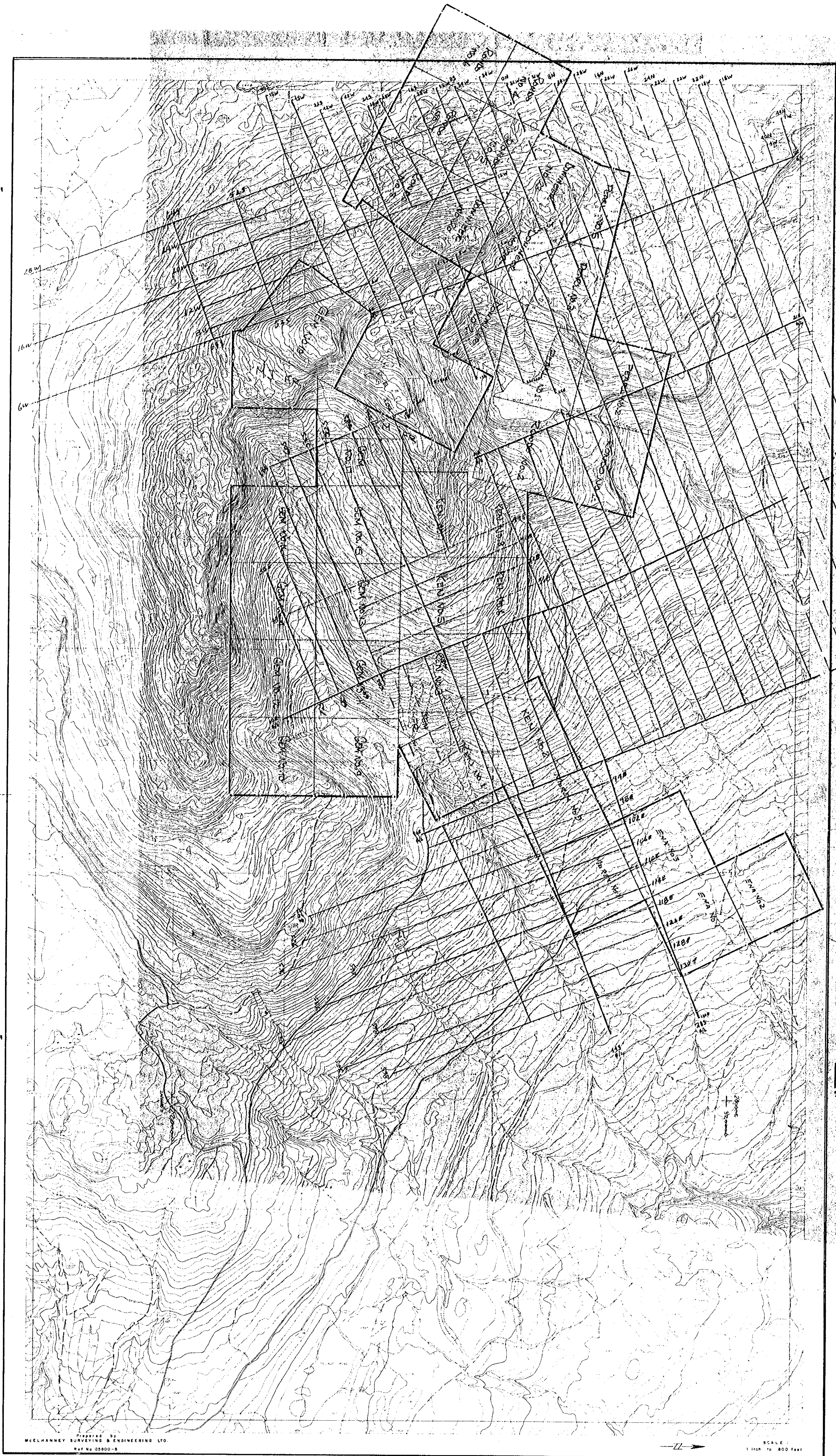
Department of
Mines and Petroleum Resources
ASSESSMENT REPORT
NO. 4505 MAP #1

1972 LINECUTTING MAP
MT. WASHINGTON
1 inch = 800 feet



92F/11,14

4505-M1



——— checked lines
 - - - unchecked lines

Department of
 Mines and Petroleum Resources
 ANNUAL REPORT
 NO. 4505 MAP #2

1972 LINECUTTING MAP
 MT. WASHINGTON
 1 inch = 800 feet

——— N

4505-12