

4557

GEOCHEMICAL AND GEOPHYSICAL REPORT ON THE

SL CLAIMS

Cariboo Mining Division

by

P.E. Fox, PhD., P.Eng. (B.C.)

August 25, 1973

Department of
Mines and Petroleum Resources
ASSESSMENT REPORT

NO. **4557** MAP.....

TABLE OF CONTENTS

Introduction	1
Location and Access	1
Physiography	1
Claims	3
Grouping	3
Work Program	3
Geology	4
Local Geology	6
Geochemistry	8
Magnetometer Survey	9
Personnel	10
Contract Personnel	10
Expenditures	11

ILLUSTRATIONS

#1 Fig. 1 - Location Map	2
#2 Fig. 2 - Claim Map	in pocket
#3 Fig. 3 - Geological Map	5
#4 Fig. 4 - Geochemical Map	in pocket
#5 Fig. 5 - Magnetometer Map	in pocket
#6 Trench Plans	

APPENDIX

Appendix I - Geochemical Analyses	12
---	----

INTRODUCTION

The object of this report is to present results of geochemical and geophysical work on the SL claims, Cariboo Mining Division, between June 5th and July 3rd, 1973. This report is submitted in support of the above work program, which was filed in Quesnel on July 31, 1973.

LOCATION AND ACCESS

The SL claims are located near Mitchell Bay on Quesnel Lake 10 miles north of Horsefly, B.C. (Fig. 1). The claims are easily reached by a public access route north of Horsefly and short logging spurs that leave the main road at Mitchell Bay.

PHYSIOGRAPHY

The SL claims are situated on timbered slopes between Quesnel Lake to the north and Antoine Lake to the south. Relief between Quesnel Lake and small rocky summits within the claim block is about 500 feet.

Much of the commercial timber was removed several years ago and slash from these operations, deadfall, and a dense growth of underbrush cover much of the claim block. Rocky ridges and summits are common in the central part of the claim block where much of the current exploration work is being done. Elsewhere bedrock exposures are rare due to a thick mantle of glacial till that thickens rapidly to the east and north.



Fig. 1 Location map for the 'SL' claims. Scale: 1:500,000
 To accompany: Geochemical and Geophysical Report on
 the SL Claims, by P.E. Fox P.Eng. August 25 1973

Department of
 Mines and Petroleum Resources
 ASSESSMENT REPORT
 NO. 4557 MAP #1

[Handwritten signature]

CLAIMS

There are currently 84 claims in good standing. The following list indicates record numbers and expiry dates.

<u>SL</u>	<u>Record Number</u>	<u>Expiry Date</u>
1 - 12	67394-67405	August 15, 1973
13 - 20	67428-67435	August 15, 1973
21 - 35	67406-67420	August 15, 1973
36	67422	August 15, 1973
37 - 42	67436-67441	August 15, 1973
43	67421	August 15, 1973
44	67423	August 15, 1973
45 - 48	67424-67427	August 15, 1973
49 - 68	67442-67461	August 15, 1973
69 - 84	67462-67477	August 17, 1973

Work has been filed on all claims except SL 78, 80, 82, 84.

Grouping

Claims were grouped into two groups - 'A' group and 'B' group on July 31, 1973. 'A' group comprises SL 1-12, 14, 16, 18, 37-42, 43, 44, 64-77, 79, 81, and 83; 'B' group comprises SL 13, 15, 17, 19-20, 21-35, 36, 45-48, and 49-63.

WORK PROGRAM

The 1973 work program consisted of grid preparation, geological mapping, ground magnetometer survey, trenching, geochemical overburden and bedrock sampling, and induced polarization work. The work was done between June 5th and July 3rd, 1973. A grid consisting of 40 line-miles of blazed and flagged lines was prepared by contract and project personnel. Line coordinates range from 10+00 north to

130+00 North, and from 0+00 East to 160+00 East. A north-south baseline was established at 70+00 East. Control tie-lines were prepared on the east and west ends of the grid. Approximately 10 line-miles were cut by axe and chainsaw by contract personnel in support of the induced polarization work.

The magnetometer survey was done by D.G. Colley (operator). Two McPhar M700 instruments were employed - one on survey work and a second coupled to a Rustrak drum recorder. The latter instrument provided a continuous strip recording during operating hours and eliminated base-station readings required for diurnal corrections. A reference base station was established at Line 70E and 100N.

Geochemical work consisted of bedrock and soil sampling. Soil samples were collected from a reddish, iron-rich 'B' horizon or from parent 'C' horizon materials immediately below topsoil. Average depth of each sample is about 12 inches. Samples were collected with a mattock and stored in Kraft paper bags. Samples were taken on 400-foot centers over the main part of the grid and on 200-foot intervals in the main area of interest. About 750 samples were collected and analyzed for Cu, Mo, Ni, Ag, and Au at Acme Analytical Laboratories Ltd., 6455 Laurel St., Burnaby, B.C.

GEOLOGY

The property is situated in the eastern part of the Quesnel trough not far from its eastern boundary with metamorphosed rocks of the Cariboo mountains. Rocks in this region consist of a thick

Department of

Mines and Petroleum Resources

MINERAL REPORT

NO. 4557 #3

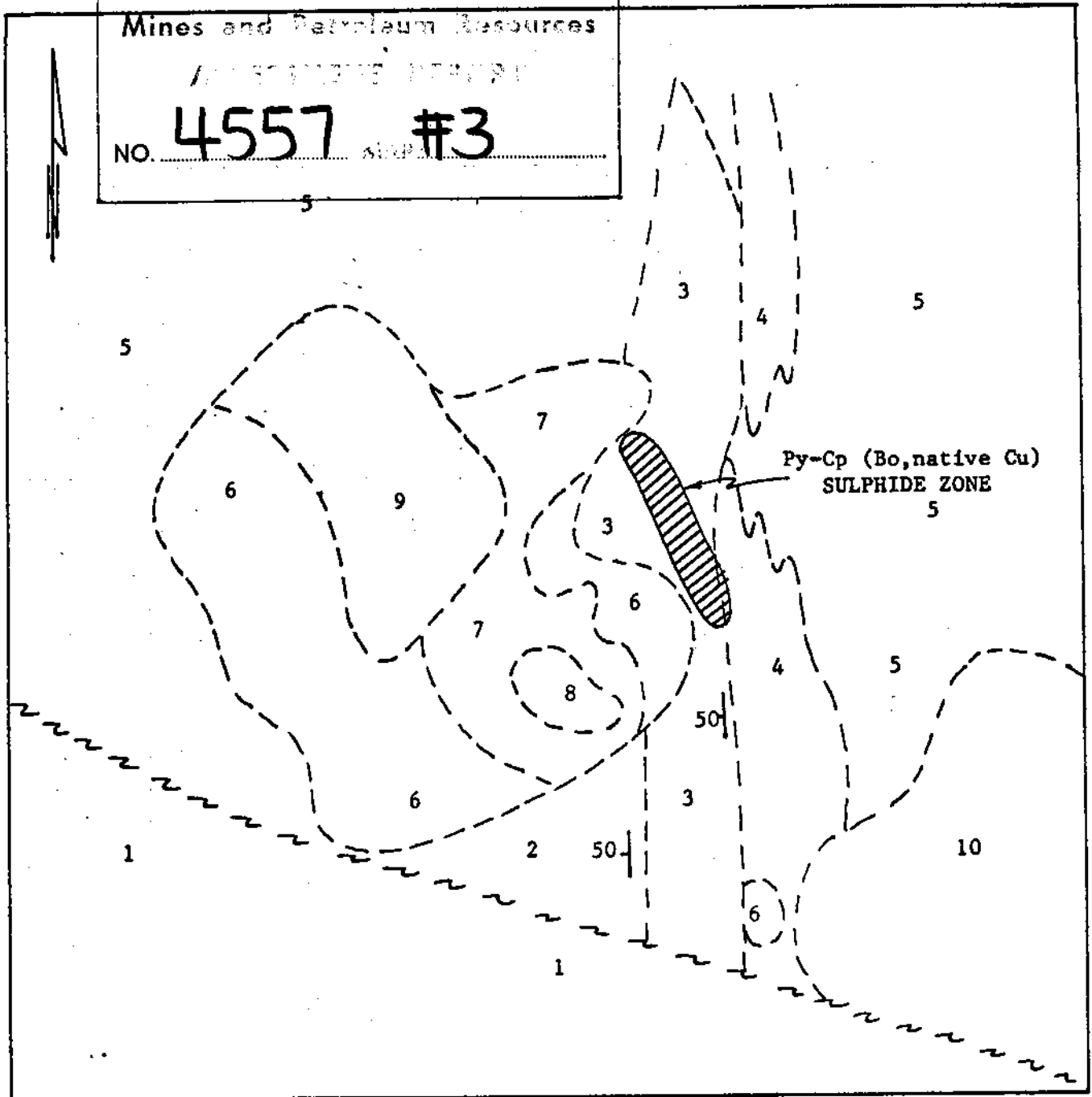


Fig 3 SHIKO LAKE PROPERTY
GEOLOGICAL SKETCH MAP

10 Augite porphyry flow breccia, 9 hornblende porphyry, 8 syenite, 7 diorite and syenodiorite, 6 Augite diorite, 5 chaotic, poorly sorted volcanic breccia, 4 pillow lava and breccia, 3 well sorted volcanic breccia with syenite clasts, 2 well bedded tuff, 1 dark brown volcanic breccia.

Sulphide zone containing chalcopyrite, pyrite, bornite, and native copper shown by cross-hatch pattern.

Approximate scale, 1"=2000 feet.

To Accompany: Geochemical and Geophysical Report on the SL Claims, By P.E. Fox P.Eng. August 25, 1973

succession of submarine volcanics comprising pillow andesite, agglomerate, pillow breccia, heterolithologic volcanic breccias (submarine slump breccias), and discontinuous carbonate horizons and several thousand feet of subareal volcanics consisting of leucite-bearing andesite and related flow-top breccias, volcanic conglomerate and sandstone, tuff, laharic breccia, and well bedded sediments and limestone pebble conglomerate.

Several symvolcanic stocks of diorite, syenodiorite, and syenite occur within the submarine volcanic sequence and represent eroded conduit zones from which much of the volcanic flows and breccias were erupted. One of these intrusive bodies is exposed on the SL claim block. North and northeast faults are common, and one of these separates submarine volcanic units from subareal types near the south end of the claim block.

LOCAL GEOLOGY

A geological sketch plan is given in Figure 3 (approximate scale 1" = 2000'). The main feature of the prospect is a circular stock about one mile in diameter enclosed by various volcanic breccias and tuff. The stock varies from a marginal phase of augite diorite (6) that grades inward to monzonite (7), and syenite (8). A late pyrite-rich hornblende porphyry (9) occupies the central and northern parts of the stock and appears to cross-cut older units. An inward-dipping planar foliation has formed along the southeast contact of the stock. Dark brown and maroon coloured volcanic flow breccia and leucite-bearing

andesite occupy the southern part of the property and are faulted against west dipping units farther north. Tuff (2) and breccia (3) east of the stock dip westerly at 50° . Unit 4 is an augite porphyry pillow lava and related pillow breccia and agglomerate. Pillow structures are common in the upper part of the unit adjacent to the overlying breccia. Unit 5 is a poorly sorted, chaotic breccia consisting of volcanic clasts in a lithic and crystal matrix of the same composition. Fragments are subangular to subrounded. Unit 10 occupies much of the southeast part of the property. It is a flow breccia consisting of grey and maroon vesicular fragments in a granular, friable matrix.

Dykes of hornblende porphyry, andesite, latite, and syenite are abundant east of the stock. Most strike east and northeast and are undoubtedly derived from the stock complex.

Two zones of interest have been outlined, an area of some 500 x 2000 feet east of the stock and a large pyritic zone associated with the central hornblende porphyry. The eastern zone occurs in volcanic breccia of unit 3 and in the upper part of unit 4. The breccia is highly altered adjacent to the stock where biotite, epidote, and chlorite, and occasionally garnet have formed in the breccia matrix. Sulphides consist predominantly of pyrite, which forms both disseminated aggregates and fracture coatings. Chalcopyrite is often associated but usually finer grained than pyrite, and occurs on fracture surfaces. Bornite and native copper are locally visible in the upper part of unit 4 and lower part of unit 3.

The central hornblende porphyry is poorly exposed and only a few outcrops were available for examination. Disseminated chalcopyrite and pyrite were noted in outcrops near the west edge of the unit. Pyrite is abundant throughout and forms disseminated grains and fracture coatings.

GEOCHEMISTRY

Results of the geochemical program are given in Appendix I. Analyses for copper are shown in Figure 4. Soil samples are coded according to their copper content. Nickel contents are utilized to separate soils overlying relatively copper-rich basic volcanic units from those overlying felsic breccias and tuff. Anomalous soils appear to have copper contents above 150 ppm and copper/nickel ratios greater than 2. Threshold amounts are generally 70 - 150 ppm copper.

Figure 4 is a summary of geochemical data. Overall soil anomalies are shown by a dashed line (> 70 ppm copper), and more local concentrations above 200 ppm copper by a dotted line. Samples are also anomalous in gold (greater than 0.05 ppm Au). Maximum copper contents occur near trench 2 where concentrations up to 4300 ppm copper were detected. The overall anomaly is 4500 feet in an easterly direction more or less parallel to lines 90N and 85N and 1200 feet wide near trench 2. Three areas of unusually high copper and gold contents are situated near trench 2, at the west end of line 95N, and at the east end of line 85N. The central high may indicate

continuity of mineralized bedrock in trench 2 as far as the anomaly south line 95N. The eastern +200 ppm anomaly is in an area of extensive overburden but one mineralized outcrop just north of the anomaly returned a geochemical assay of 0.45% copper and 0.04 oz/ton gold (sample SDR 510).

MAGNETOMETER SURVEY

Results of the magnetometer survey are given in Figure 5. Individual station readings are indicated along the grid lines, and results are contoured. A large area of low magnetic relief at the southwest corner of the claim block is due to pillow breccias and agglomerate of units 4 and 10 (Figure 3); similar response north of line 100N is probably due to deep overburden conditions in this part of the grid. The zoned pluton is indicated by variable magnetic relief, and breccia zones to the east of the stock generally show strong magnetic relief. The altered zone along the east contact of the stock in which most of the high, copper-bearing grade material has been discovered is shown by a prominent magnetic anomaly some 2000 feet long and several hundred feet wide. Relief here is almost 6000 gammas and contrasts strongly with less altered breccia exposed along the grid baseline.

Prepared by

Fox Geological Consultants Ltd.



P.E. Fox, PhD. P.Eng.(B.C.)
August 25, 1973

EXPENDITURES

Period: June 5, 1973 - July 3, 1973

Type of work: Line cutting and grid preparation, 40 line-miles; geochemical survey for Mo,Cu,Ni,Ag,Au, 750 samples, 40 line-miles; Magnetometer survey, 40 line miles using McPhar M700; geological mapping by P.E.Fox and J.W. Morton (not applied as assessment work); Trenching; Induced polarization survey, 8 line-miles by Eagle Geophysics Ltd. (separate report by J. Lloyd, P.Eng).

Salaries:

P.E. Fox, geologist-in-charge, 4 days at \$100	\$400	
D.G. Colley, magnetometer survey, 20 days @ \$25	500	
B. Bried, line cutter, 9 days @ \$25	225	
M. Legros, line cutter, sampler, 20 days @ \$25	500	
J. Morton, line cutter, sampler, 9 days @ \$32	290	
Amex Exploration Services, linecutting by contract, June 16-July 3rd	<u>2,190</u>	
Salaries subtotal		4,105

Vehicles:

2 4wd vehicles, June 5 - June 24 - 20 days	480
1 4wd vehicle, June 25 - July 3 - 8 days	96

Accomodation & Board: 80 man days at \$8.00/day 640

Magnetometer Rental: McPhar Geophysics Ltd. includes Rustrak recorder 126

Geochemical Samples: 752 samples by Acme Laboratories 648

Report Preparation: Drafting, typing, report by P.E.Fox, P.Eng. 400

TOTAL EXPENDITURES \$6,495

Application of Work: 'A' Group \$3,200
'B' Group 3,200

I hereby certify that the above is a true statement of expenditures incurred for the geochemical and geophysical survey on the SL mineral claims conducted from June 5, 1973 to July 3, 1973.

.....
P.E. Fox, Ph.D. P.Eng. (B.C.)
August 25, 1973

APPENDIX I

GEOCHEMICAL ANALYSES

Done by: Acme Analytical Laboratories Ltd.
Burnaby, B.C.

Analyses by perchloric acid extraction and
analysis by atomic absorption.
Results given in parts-per-million
750 samples

ACME ANALYTICAL LABORATORIES LTD.

Assaying & Trace Analysis
6455 Laurel St., Burnaby 2, B.C.

Tel: 299-5242

TO
FOX GEOLOGICAL CONSULTANTS LTD.
827 SICAMORE DR.
KAMLOOPS, B.C.

File No. 2288
Type of Samples Soils
Disposition 1 year

ANALYSES CERTIFICATE

7

No.	Sample	Cu	Mo	Ni	Ag	Zn						No.
01	73 SCS 89	42	1	28	.1	54						01
02	90	19	1	28	.1	106						02
03	91	44	2	26	.1	68						03
04	92	160	1	42	.1	60						04
05	94	47	1	34	.1	100						05
06	95	27	1	32	.1	90						06
07	96	20	1	32	.1	62						07
08	97	46	1	44	.4	188						08
09	98	26	1	32	.4	82						09
10	99	35	1	42	.6	108						10
11	100	178	2	76	1.5	110						11
12	101	32	1	34	.4	96						12
13	102	33	1	26	.1	48						13
14	103	22	1	30	.1	62						14
15	104	17	1	34	.2	96						15
16	105	96	1	16	.3	98						16
17	106	31	1	18	.5	100						17
18	107	28	1	42	.2	78						18
19	108	17	1	26	.4	92						19
20	109	20	1	24	.2	102						20
21	110	20	1	26	.2	104						21
22	111	27	1	36	.2	66						22
23	112	20	1	22	.1	114						23
24	113	20	1	18	.2	214						24
25	114	14	1	16	.1	116						25
26	115	23	1	18	.2	264						26
27	116	13	1	26	.2	82						27
28	117	24	1	34	.1	66						28
29	118	28	1	26	.2	50						29
30	119	13	1	26	.1	92						30
31	120	19	1	22	.1	74						31
32	121	9	1	26	.1	86						32
33	122	8	2	16	.1	104						33
34	123A	90	2	38	.4	90						34
35	123B	20	1	22	.4	82						35
36	124	11	1	18	.3	156						36
37	125	8	1	20	.3	92						37
38	126	7	1	18	.1	78						38
39	73 SCS 127	18	2	40	.1	52						39
40												40

All reports are the confidential property of clients.

DATE SAMPLES RECEIVED June 19, 1973
DATE REPORTS MAILED June 21, 1973
ANALYST Dean Jeff

ACME ANALYTICAL LABORATORIES LTD.

Assaying & Trace Analysis
6455 Laurel St., Burnaby 2, B.C.

Tel: 299-5242

TO _____

FOX GEOLOGICAL CONSULTANTS LTD.
827 SICAMORE DR.
KAMLOOPS, B.C.

File No. 2288
Type of Samples Soils
Disposition 1 year

ANALYSES CERTIFICATE

8

No.	Sample	Cu	Mo	Ni	Ag	Zn					No.
01	73 SCS 128	25	1	46	.2	114					01
02	129	8	1	16	.2	108					02
03	130	24	2	36	.5	154					03
04	131	29	1	36	.4	76					04
05	132	12	1	22	.1	118					05
06	133	22	2	38	.1	96					06
07	134	27	2	28	.2	100					07
08	135	40	2	48	.8	148					08
09	136	32	2	36	.1	96					09
10	137	37	1	22	.4	130					10
11	138	22	2	44	.3	138					11
12	139	16	1	22	.1	84					12
13	140	26	1	34	.1	60					13
14	141	6	1	12	.1	84					14
15	142	25	1	32	.1	72					15
16	143	26	1	26	.1	94					16
17	73 SCS 144	27	1	34	.1	68					17
18											18
19	73 CCR 39	12	1	8	.4	48					19
20											20
21											21
22											22
23											23
24											24
25											25
26											26
27											27
28											28
29											29
30											30
31											31
32											32
33											33
34											34
35											35
36											36
37											37
38											38
39											39
40											40

All reports are the confidential property of clients.

DATE SAMPLES RECEIVED June 19, 1973
DATE REPORTS MAILED June 21, 1973
ANALYST Dean Jeff

ACME ANALYTICAL LABORATORIES LTD.

Assaying & Trace Analysis
6455 Laurel St., Burnaby 2, B.C.

Tel: 299-5242

TO _____

FOX GEOLOGICAL CONSULTANTS LTD.
827 SICAMORE DR.
KAMLOOPS, B.C.

File No. 2288

ANALYSES CERTIFICATE

Type of Samples Soils

Disposition 1 year

No.	Sample	Au										No.
01	73 SCS 89	ND										01
02	91	.01										02
03	94	ND										03
04	96	ND										04
05	98	ND										05
06	100	ND										06
07	102	ND										07
08	104	ND										08
09	106	.01										09
10	108	ND										10
11	110	ND										11
12	112	ND										12
13	114	ND										13
14	116	ND										14
15	118	ND										15
16	120	ND										16
17	122	ND										17
18	123B	ND										18
19	125	ND										19
20	127	ND										20
21	129	ND										21
22	131	ND										22
23	133	ND										23
24	135	ND										24
25	137	ND										25
26	139	ND										26
27	141	.01										27
28	73 SCS143	ND										28
29												29
30												30
31												31
32												32
33												33
34												34
35												35
36												36
37												37
38												38
39												39
40												40

All reports are the confidential property of clients.

ND - Not Detectable

DATE SAMPLES RECEIVED _____

DATE REPORTS MAILED _____

July 6, 1973

ANALYST _____

Dean Jeff

ACME ANALYTICAL LABORATORIES LTD.

Assaying & Trace Analysis
6455 Laurel St., Burnaby 2, B.C.

Tel: 293-5242

TO _____

FOX GEOLOGICAL CONSULTANTS LTD.
827 SICAMORE DR.
KAMLOOPS, B.C.

File No. 2344

ANALYSES CERTIFICATE

Type of Samples Soils

Disposition 1 year

No.	Sample	Mo	Cu	Ni	Zn	Au						No.
01	73SCS-145	1	25	40	72	ND						01
02	146	1	86	56	90							02
03	147	2	56	70	165	ND						03
04	148	1	104	72	86							04
05	149	1	76	78	84	ND						05
06	150	1	34	54	114							06
07	151	1	166	26	96	.01						07
08	152	2	146	56	126							08
09	153	1	66	40	92	ND						09
10	154	1	160	54	84							10
11	155	1	112	64	120	.01						11
12	156	1	56	38	62							12
13	157	1	42	46	142	ND						13
14	158	1	21	36	88							14
15	159	1	26	38	82	ND						15
16	160	1	32	36	88							16
17	161	1	28	54	152	ND						17
18	162	1	40	26	68							18
19	163	1	44	48	74	ND						19
20	164	1	40	76	76							20
21	165	1	24	46	130	ND						21
22	166	1	30	50	112							22
23	167	2	31	36	88	ND						23
24	168	1	30	42	102							24
25	169	1	50	38	72	ND						25
26	170	1	48	40	80							26
27	171	1	36	62	142	ND						27
28	172	1	32	32	90							28
29	173	1	134	150	82	ND						29
30	174	1	39	74	144							30
31	175	1	70	92	102	ND						31
32	176	1	25	58	108							32
33	177	2	42	70	86	.01						33
34	178	1	20	48	80							34
35	179	1	22	38	108	ND						35
36	180	1	28	34	84							36
37	181	1	70	52	108	ND						37
38	182	1	26	36	92							38
39	73SCS- 183	1	35	50	92	ND						39
40												40

All reports are the confidential property of clients.

DATE SAMPLES RECEIVED June 29/73

DATE REPORTS MAILED July 4/73

ANALYST Dean J. [Signature]

ACME ANALYTICAL LABORATORIES LTD.

Assaying & Trace Analysis
6455 Laurel St., Burnaby 2, B.C.

Tel: 299-5242

TO _____

FOX GEOLOGICAL CONSULTANTS LTD.

827 S. CAMORE DR.
KAMLOOPS, B.C.

File No. 2344

ANALYSES CERTIFICATE

Type of Samples Soils

Disposition 1 year

No.	Sample	Mo	Cu	Ni	Zn	Au					No.
01	73SCS-184	2	60	52	100	ND					01
02	186	1	32	36	92						02
03	187	1	126	40	68	ND					03
04	188	1	30	36	104						04
05	189	1	114	80	72	ND					05
06	190	1	44	58	104						06
07	191	1	305	54	92	ND					07
08	192	5	475	228	124						08
09	193	1	26	34	90	ND					09
10	194	10	1720	240	148						10
11	195	1	68	48	72	.02					11
12	73SCS-196	1	30	54	136						12
13											13
14	73CCS- 59	1	8	18	130	ND					14
15	60	1	7	16	40						15
16	61	1	7	14	24	ND					16
17	62	1	10	16	54						17
18	63	1	8	16	82	ND					18
19	64	1	26	28	88						19
20	65	1	14	18	52	ND					20
21	66	1	23	34	82						21
22	67	1	12	20	32	ND					22
23	68	1	42	46	74						23
24	69	1	20	20	40	ND					24
25	70	1	16	20	54						25
26	71	1	7	14	48	ND					26
27	72	1	8	14	38						27
28	73	1	12	20	68	ND					28
29	74	3	15	20	86						29
30	75	1	8	12	42	ND					30
31	73CCS- 76	2	12	18	50						31
32											32
33											33
34											34
35											35
36											36
37											37
38											38
39											39
40											40

All reports are the confidential property of clients.

DATE SAMPLES RECEIVED June 29/73
 DATE REPORTS MAILED July 4/73
 ANALYST Deane Byl

ACME ANALYTICAL LABORATORIES LTD.

Assaying & Trace Analysis
6455 Laurel St., Burnaby 2, B.C.

Tel: 299-5242

TO _____

FOX GEOLOGICAL CONSULTANTS LTD.

827 SIKAMORE DR.
KAMLOOPS, B.C.

File No. 2288

Type of Samples Soils

Disposition 1 year

ANALYSES CERTIFICATE

* CORRECTION MADE

No.	Sample	Au										No.
01	73 LS 244	ND										01
* 02	246	.01										02
03	248	ND										03
04	250	ND										04
05	252	ND										05
06	254	ND										06
07	256	ND										07
08	258	ND										08
09	260	ND										09
10	262	ND										10
11	264	ND										11
12	266	.01										12
13	268	ND										13
14	270	ND										14
15	272	ND										15
16	274	ND										16
17	276	ND										17
18	278	ND										18
19	280	ND										19
20	282	ND										20
21	284	ND										21
22	286	ND										22
23	288	ND										23
24	290	ND										24
25	292	ND										25
26	294	ND										26
27	296	ND										27
28	298	ND										28
29	300	ND										29
30	302	ND										30
31	304	ND										31
32	306	ND										32
33	308	ND										33
34	310	ND										34
35	312	.07										35
36	314	ND										36
37	316	.01										37
38	318	ND										38
39	73 LS 320	ND										39
40												40

All reports are the confidential property of clients.

ND - Not Detectable
* Correction made

DATE SAMPLES RECEIVED _____

DATE REPORTS MADE July 6, 1973

ANALYST Alan Jay

ACME ANALYTICAL LABORATORIES LTD.

Assaying & Trace Analysis
6455 Laurel St., Burnaby 2, B.C.

Tel: 299-5242

TO _____

FOX GEOLOGICAL CONSULTANTS LTD.
827 SICAMORE DR.
KAMLOOPS, B.C.

File No. 2288

ANALYSES CERTIFICATE

Type of Samples Soils

Disposition 1 year

No.	Sample	Cu	Mo	Ni	Ag	Zn					No.
01	73 SLS 244	23	1	30	.3	118					01
02	245	34	2	23	.1	68					02
03	246	30	2	42	.1	134					03
04	247	62	2	50	.2	160					04
05	248	38	2	46	.1	108					05
06	249	47	2	54	.3	158					06
07	250	8	1	16	.2	110					07
08	251	12	1	14	.4	166					08
09	252	16	1	32	.1	148					09
10	253	31	1	44	.2	126					10
11	254	26	1	40	.2	100					11
12	255	29	2	44	.4	156					12
13	256	52	3	56	.7	194					13
14	257	19	1	34	.2	178					14
15	258	19	1	30	.2	128					15
16	259	30	1	36	.2	108					16
17	260	24	1	30	.3	144					17
18	261	21	1	28	.2	90					18
19	262	12	1	14	.1	72					19
20	263	35	2	42	.3	166					20
21	264	14	1	32	.1	124					21
22	265	14	1	32	.2	52					22
23	266	38	1	32	.1	50					23
24	267	13	1	16	.1	62					24
25	268	15	1	16	.2	106					25
26	269	16	1	20	.1	72					26
27	270	16	1	26	.2	86					27
28	271	10	1	12	.1	44					28
29	272	42	1	30	.2	116					29
30	273	36	1	30	.1	94					30
31	274	55	1	30	.2	124					31
32	275	24	1	22	.3	98					32
33	276	19	1	24	.3	226					33
34	277	20	1	32	.3	238					34
35	278	37	1	36	.3	102					35
36	279	15	1	26	.3	180					36
37	280	17	1	28	.1	62					37
38	281	16	1	28	.2	56					38
39	73 SLS 282	30	1	28	.2	42					39
40											40

All reports are the confidential property of clients.

DATE SAMPLES RECEIVED June 19, 1973

DATE REPORTS MAILED June 21, 1973

ANALYST Dean Taylor

ACME ANALYTICAL LABORATORIES LTD.

Assaying & Trace Analysis
6455 Laurel St., Burnaby 2, B.C.

Tel: 299-5242

FOX GEOLOGICAL CONSULTANTS LTD.

827 SICAMORE DR.
KAMLOOPS, B.C.

File No. 2288

ANALYSES CERTIFICATE

Type of Samples Soils

Disposition 1 year

No.	Sample	Cu	Mo	Ni	Ag	Zn					No.
01	73 SLS 283	12	1	22	.3	78					01
02	284	60	1	38	.5	76					02
03	285	14	1	16	12	96					03
04	286	16	1	18	.2	62					04
05	287	12	1	12	.1	62					05
06	288	12	1	14	.1	50					06
07	289	20	1	22	.1	148					07
08	290	16	1	22	.1	88					08
09	291	9	1	16	.2	132					09
10	292	21	1	30	.3	94					10
11	293	38	2	40	.4	114					11
12	294	15	1	20	.2	58					12
13	295	14	1	32	.2	68					13
14	296	16	1	30	.1	88					14
15	297	13	1	24	.2	88					15
16	298	21	1	32	.1	70					16
17	299	14	1	22	.1	66					17
18	300	12	1	20	.1	88					18
19	301	14	1	30	.2	120					19
20	302	30	1	28	.1	68					20
21	303	22	1	32	.6	132					21
22	304	47	2	60	1.1	104					22
23	305	26	2	40	.5	120					23
24	306	24	1	28	1.1	92					24
25	307	16	1	26	.1	96					25
26	308	24	1	32	.3	84					26
27	309	23	1	34	.1	54					27
28	310	20	1	38	.5	142					28
29	311	76	2	32	.4	84					29
30	312	70	2	36	.4	114					30
31	313	114	1	40	.3	92					31
32	314	34	1	36	.4	102					32
33	315	24	2	34	.1	62					33
34	316	20	1	28	.3	64					34
35	317	19	1	42	.2	110					35
36	318	11	1	30	.1	104					36
37	319	22	1	42	.3	94					37
38	320	255	3	166	1.6	142			organic		38
39	73 SLS 321	54	1	88	.2	64					39
40											40

All reports are the confidential property of clients.

DATE SAMPLES RECEIVED June 19, 1973

DATE REPORTS MAILED June 21, 1973

ANALYST Dean Jeff

ACME ANALYTICAL LABORATORIES LTD.

Assaying & Trace Analysis
6455 Laurel St., Burnaby 2, B.C.

Tel: 299-5242

TO _____

FOX GEOLOGICAL CONSULTANTS LTD.
827 SICAMORE DR.
KAMLOOPS, B.C.

ANALYSES CERTIFICATE

File No. m 2288

Type of Samples Soils

Disposition 1 year

3

No.	Sample	Cu	Mo	Ni	Ag	Zn						No.
01	73 SLS 322	17	1	38	.4	196						01
02	323	16	1	42	.4	158						02
03	324	34	2	32	.4	108						03
04	325	66	2	46	.4	86						04
05	326	51	2	54	.3	88						05
06	327	45	1	60	.3	68						06
07	328	100	2	92	.4	74						07
08	329	36	2	56	.4	110						08
09	330	30	1	52	.8	92						09
10	331	13	1	26	.2	102						10
11	332	44	2	34	.4	138						11
12	333	27	1	42	.5	280						12
13	334	37	2	38	.7	246						13
14	335	52	2	46	.1	142						14
15	336	12	1	24	.4	154						15
16	337	11	1	32	.1	118						16
17	338	12	1	34	.1	160						17
18	339	22	1	46	.1	148						18
19	340	19	1	30	.1	64						19
20	341	22	1	30	.1	46						20
21	342	26	1	38	.1	92						21
22	343	24	1	30	.1	76						22
23	344	24	1	38	.4	146						23
24	345	22	2	34	.4	150						24
25	346	36	2	44	.3	100						25
26	347	20	1	30	.1	86						26
27	348	18	1	26	.4	150						27
28	349	128	1	48	.1	72						28
29	350	48	1	42	.5	146						29
30	351	19	1	22	.3	50						30
31	352	42	1	46	.5	144						31
32	353	24	1	36	.3	80						32
33	354	16	1	22	.3	108						33
34	355	42	1	42	.4	146						34
35	356	32	1	42	.2	110						35
36	357	20	2	38	.2	110						36
37	358	114	2	74	.5	112						37
38	359	36	1	42	.4	100						38
39	73 SLS 360	214	1	116	.3	126						39
40												40

All reports are the confidential property of clients.

DATE SAMPLES RECEIVED June 19, 1973
DATE REPORTS MAILED June 21, 1973
ANALYST Neel Jais

ACME ANALYTICAL LABORATORIES LTD.

Assaying & Trace Analysis
6455 Laurel St., Burnaby 2, B.C.

Tel: 299-5242

FOX GEOLOGICAL CONSULTANTS LTD.
827 SICAMORE DR.
KAMLOOPS, B.C.

ANALYSES CERTIFICATE

File No. 2288
Type of Samples Soils
Disposition 1 year

No.	Sample	Cu	Mo	Ni	Ag	Zn						No.
01	73 SLS 361	26	1	40	.1	92						01
02	362	30	2	46	.4	120						02
03	363	112	2	54	.3	84						03
04	364	30	1	38	.4	90						04
05	365	12	1	36	.2	102						05
06	366	30	1	32	.4	132						06
07	367	32	1	38	.4	88						07
08	368	28	1	34	.2	92						08
09	369	32	1	38	.1	74						09
10	370	18	1	36	.3	144						10
11	371	34	1	42	.3	96						11
12	372	30	1	48	.4	108						12
13	373	8	1	14	.3	74						13
14	374	620	3	130	2.1	148						14
15	375	12	2	10	.4	42						15
16	376	26	1	48	.7	166						16
17	377	34	1	36	.1	92						17
18	378	88	1	62	.4	138						18
19	379	94	2	90	.5	124						19
20	380	21	1	30	.2	60						20
21	381	21	1	36	.3	104						21
22	382	28	1	46	.1	112						22
23	383	140	1	58	.4	74						23
24	384	30	1	36	.1	82						24
25	385	108	1	50	.3	96						25
26	386	36	1	42	.1	110						26
27	387	18	1	24	.1	104						27
28	388	38	2	50	.1	98						28
29	389	50	1	42	.1	48						29
30	390	40	2	42	.7	536						30
31	391	34	1	40	.6	284						31
32	392	22	1	26	.1	62						32
33	393	25	1	44	.4	230						33
34	394	52	1	46	.1	152						34
35	395	78	2	68	.5	160						35
36	396	28	1	52	.4	104						36
37	397	76	1	68	.1	86						37
38	398	65	2	58	.1	88						38
39	73 SLS 399	84	1	60	.1	52						39
40												40

All reports are the confidential property of clients.

DATE SAMPLES RECEIVED June 19, 1973
 DATE REPORTS MAILED June 21, 1973
 ANALYST Dean Liff

ACME ANALYTICAL LABORATORIES LTD.

Assaying & Trace Analysis
6455 Laurel St., Burnaby 2, B.C.

Tel: 299-5242

FOX GEOLOGICAL CONSULTANTS LTD.

827 SICAMORE DR.
KAMLOOPS, B.C.

File No. 2288

Type of Samples Soils

Disposition 1 year

ANALYSES CERTIFICATE

2

No.	Sample	Au										No.
01	73 LS 322	ND										01
02	324	ND										02
03	326	.02										03
04	328	ND										04
05	330	.01										05
06	332	.06										06
07	334	.04										07
08	336	.01										08
09	338	ND										09
10	340	ND										10
11	342	ND										11
12	344	ND										12
13	346	ND										13
14	348	ND										14
15	350	.01										15
16	352	ND										16
17	354	ND										17
18	356	ND										18
19	358	ND										19
20	360	.01										20
21	362	ND										21
22	364	ND										22
23	366	ND										23
24	368	ND										24
25	370	ND										25
26	372	ND										26
27	374	ND										27
28	376	ND										28
29	378	ND										29
30	380	ND										30
31	382	ND										31
32	384	ND										32
33	386	ND										33
34	388	ND										34
35	390	.01										35
36	392	ND										36
37	394	ND										37
38	396	ND										38
39	398	ND										39
40	73 LS 400	ND										40

All reports are the confidential property of clients.

ND - Not Detectable

DATE SAMPLES RECEIVED _____

DATE REPORTS MAILED July 6, 1973

ANALYST Dean J. [Signature]

TO _____

ACME ANALYTICAL LABORATORIES LTD.

Assaying & Trace Analysis
6455 Laurel St., Burnaby 2, B.C.

Tel: 299-5242

FOX GEOLOGICAL CONSULTANTS LTD.

827 ST. CAMORE DR.
KAMLOOPS, B.C.

ANALYSES CERTIFICATE

File No. 2288

Type of Samples Soils

Disposition 1 year

No.	Sample	Cu	Mo	Ni	Ag	Zn						No.
01	73 SLS 400	102	1	62	.4	94						01
02	401	52	1	72	.3	126						02
03	402	110	1	98	.4	96						03
04	403	55	1	60	.1	72						04
05	404	93	1	70	.1	76						05
06	405	60	1	56	.2	88						06
07	406	36	1	44	.1	62						07
08	407	20	1	38	.1	108						08
09	408	43	1	50	.2	140						09
10	409	77	1	38	.1	96						10
11	410	29	1	46	.3	166						11
12	411	120	2	132	.1	64						12
13	412	84	2	88	.4	60						13
14	413	42	1	62	.3	112						14
15	414	43	2	60	.5	120						15
16	415	58	2	50	.4	106						16
17	416	27	1	46	.4	110						17
18	417	36	1	56	.5	144						18
19	418	22	1	40	.3	212						19
20	419	15	1	28	.3	142						20
21	420	67	1	62	.2	94						21
22	421	92	1	52	.3	56						22
23	422	29	1	40	.1	62						23
24	423	11	1	34	.1	96						24
25	424	17	1	50	.1	100						25
26	425	28	2	36	.1	116						26
27	426	16	2	26	.1	84						27
28	427	19	1	44	.2	70						28
29	428	24	2	68	.2	86						29
30	429	22	1	56	.2	74						30
31	430	92	1	235	.3	76						31
32	431	22	1	78	.1	104						32
33	432	32	1	112	.3	62						33
34	433	16	1	56	.1	70						34
35	434	18	2	136	.2	94						35
36	435	59	2	120	.3	66						36
37	436	108	2	140	.3	72						37
38	437	25	2	56	.1	96						38
39	73 SLS 438	54	2	86	.1	110						39
40												40

All reports are the confidential property of clients.

DATE SAMPLES RECEIVED June 19, 1973

DATE REPORTS MAILED June 21, 1973

ANALYST Dean [Signature]

ACME ANALYTICAL LABORATORIES LTD.

Assaying & Trace Analysis
6455 Laurel St., Burnaby 2, B.C.

Tel: 299-5242

TO _____

FOX GEOLOGICAL CONSULTANTS LTD.

827 SICAMORE DR.
KAMLOOPS, B.C.

File No. 2288

Type of Samples Soils

Disposition 1 year

ANALYSES CERTIFICATE

6

No.	Sample	Cu	Mo	Ni	Ag	Zn							No.
01	73 SLS 439	66	2	174	.2	120							01
02	440	92	2	160	.4	150							02
03	441	38	1	50	.2	52							03
04	442	8	1	32	.1	54							04
05	443	52	1	56	.2	48							05
06	444	10	1	32	.2	86							06
07	445	12	1	34	11	60							07
08	446	25	1	52	.1	62							08
09	447	17	1	40	.2	70							09
10	448	20	1	24	.1	48							10
11	449	102	2	90	.6	208							11
12	73 SLS 450	82	2	62	.3	82							12
13													13
14													14
15													15
16													16
17													17
18													18
19													19
20													20
21													21
22													22
23													23
24													24
25													25
26													26
27													27
28													28
29													29
30													30
31													31
32													32
33													33
34													34
35													35
36													36
37													37
38													38
39													39
40													40

All reports are the confidential property of clients.

DATE SAMPLES RECEIVED June 19, 1973
 DATE REPORTS MAILED June 21, 1973
 ANALYST Dean Jay

ACME ANALYTICAL LABORATORIES LTD.

Assaying & Trace Analysis
6455 Laurel St., Burnaby 2, B.C.

Tel: 299-5242

TO _____
FOX GEOLOGICAL CONSULTANTS LTD.
827 STAMORE DR.
KAMLOOPS, B.C.

File No. 2288
Type of Samples Soils
Disposition 1 year

ANALYSES CERTIFICATE

3

No.	Sample	Au										No.
01	73 LS 402	ND										01
02	404	ND										02
03	406	ND										03
04	408	.02										04
05	410	ND										05
06	412	ND										06
07	414	.01										07
08	416	ND										08
09	418	ND										09
10	420	ND										10
11	422	ND										11
12	424	ND										12
13	426	ND										13
14	428	ND										14
15	430	ND										15
16	432	ND										16
17	434	ND										17
18	436	ND										18
19	438	ND										19
20	440	ND										20
21	442	ND										21
22	444	.05										22
23	446	ND										23
24	448	ND										24
25	73 LS 450	ND										25
26												26
27												27
28												28
29												29
30												30
31												31
32												32
33												33
34												34
35												35
36												36
37												37
38												38
39												39
40												40

All reports are the confidential property of clients.

ND - Not Detectable

DATE SAMPLES RECEIVED _____
DATE REPORTS MAILED July 6, 1973
ANALYST Dean Jeff

ACME ANALYTICAL LABORATORIES LTD.

Assaying & Trace Analysis
6455 Laurel St., Burnaby 2, B.C.

Tel: 299-5242

TO _____

FOX GEOLOGICAL CONSULTANTS LTD.
827 SICAMORE DR.
KAMLOOPS, B.C.

File No. 2339

ANALYSES CERTIFICATE

Type of Samples Soils

Disposition 1 year

No.	Sample	Mo	Cu	Ni	Zn	Au						No.
01	73SLS-451	1	28	68	50	ND						01
02	452	1	30	56	54							02
03	453	1	17	50	46	ND						03
04	454	1	32	52	62							04
05	455	1	11	28	58	ND						05
06	456	1	70	134	52							06
07	457	1	18	66	80	ND						07
08	458	1	84	114	74							08
09	459	1	31	114	90	ND						09
10	460	1	50	96	96							10
11	461	1	44	40	52	ND						11
12	462	1	19	42	62							12
13	463	1	100	58	74	.01						13
14	464	1	138	72	52							14
15	465	2	33	40	62	ND						15
16	466	1	28	40	150							16
17	467	1	22	30	68	ND						17
18	468	1	18	34	82							18
19	469	1	16	34	60	ND						19
20	470	1	64	52	76							20
21	471	1	26	46	82	ND						21
22	472	1	18	40	114							22
23	473	1	38	38	106	ND						23
24	474	1	19	52	96							24
25	475	1	17	34	84	ND						25
26	476	1	18	52	158							26
27	477	1	29	68	74	ND						27
28	478	1	17	56	80							28
29	479	1	12	78	108	ND						29
30	480	1	16	30	50							30
31	481	1	16	70	86	ND						31
32	482	1	44	136	68							32
33	483	1	20	70	94	ND						33
34	484	1	21	48	68							34
35	485	1	11	20	162	ND						35
36	486	1	30	88	68							36
37	487	1	12	28	34	ND						37
38	488	1	28	126	106							38
39	73SLS-489	1	50	134	104	ND						39
40												40

All reports are the confidential property of clients.
ND - None Detected

DATE SAMPLES RECEIVED June 28/73
 DATE REPORTS MAILED June 30/73
 ANALYST Dean Jay

ACME ANALYTICAL LABORATORIES LTD.

Assaying & Trace Analysis
6455 Laurel St., Burnaby 2, B.C.

Tel: 299-5242

FOX GEOLOGICAL CONSULTANTS LTD.
827 SICAMORE DR.
KAMLOOPS, B.C.

ANALYSES CERTIFICATE

File No. 2339

Type of Samples Soils

Disposition 1 year

No.	Sample	Mo	Cu	Ni	Zn	Au					No.
2 01	73SLS-490	1	16	88	82						01
02	491	1	11	66	104	ND					02
03	492	2	47	52	82						03
04	493	2	100	130	194	.01					04
05	494	4	34	50	92						05
06	495	1	21	12	84	ND					06
07	496	2	280	38	56						07
08	497	1	65	36	110	ND					08
09	498	2	30	30	86						09
10	499	1	38	48	102	ND					10
11	500	2	92	48	94						11
12	501	1	30	30	68	ND					12
13	502	1	36	28	156						13
14	503	1	54	64	180	ND					14
15	504	1	36	40	108						15
16	505	2	80	32	94	ND					16
17	506	3	550	120	130		Organic				17
18	507	2	32	34	128	ND					18
19	508	2	540	42	124						19
20	509	2	53	38	114	ND					20
21	510	1	78	38	78						21
22	514	1	34	50	174	ND					22
23	515	1	76	54	130						23
24	516	1	68	80	252	ND					24
25	517	2	174	102	100						25
26	73SLS-518	2	76	52	146	ND					26
27											27
28											28
29											29
30											30
31											31
32											32
33											33
34											34
35											35
36											36
37											37
38											38
39											39
40											40

All reports are the confidential property of clients.

DATE SAMPLES RECEIVED June 28/73

DATE REPORTS MAILED June 30/73

ANALYST Dean Lutz

ACME ANALYTICAL LABORATORIES LTD.

Assaying & Trace Analysis
6455 Laurel St., Burnaby 2, B.C.

Tel: 299-5242

TO _____

FOX GEOLOGICAL CONSULTANTS LTD.

827 SICAMORE DR.
KAMLOOPS, B.C.

ANALYSES CERTIFICATE

File No. 2344

Type of Samples Soils

Disposition 1 year

No.	Sample	Mo	Cu	Ni	Zn	Au						No.
01	73SLS-519	1	20	28	114	ND						01
02	520	1	28	30	94							02
03	521	1	32	26	58	ND						03
04	522	1	53	44	76							04
05	523	1	230	116	114	ND						05
06	524	1	116	60	70							06
07	525	4	282	76	84	.06						07
08	526	2	86	64	96							08
09	527	2	42	40	154	.01						09
10	528	1	31	50	110							10
11	529	1	13	40	98	ND						11
12	530	1	30	42	100							12
13	531	1	88	58	102	.03						13
14	532	2	146	56	72							14
15	533	1	78	48	160	.02						15
16	534	1	38	86	74							16
17	535	1	28	36	96	ND						17
18	536	1	62	104	92							18
19	537	1	72	48	72	ND						19
20	538	1	76	44	88							20
21	539	1	100	180	64	ND						21
22	540	1	88	124	108							22
23	541	1	66	46	102	.01						23
24	542	1	98	40	88							24
25	543	1	29	36	126	ND						25
26	544	1	52	52	260							26
27	545	2	50	48	82	ND						27
28	546	1	44	44	106							28
29	547	1	22	22	68	ND						29
30	548	1	68	56	74							30
31	549	1	40	86	66	ND						31
32	550	2	30	56	68							32
33	551	1	24	38	62	ND						33
34	552	1	22	44	68							34
35	553	1	72	28	86	ND						35
36	554	1	22	28	98							36
37	555	1	26	28	76	ND						37
38	556	1	30	30	64							38
39	73SLS-557	1	16	26	58	.01						39
40												40

All reports are the confidential property of clients.

ND - None Detected

DATE SAMPLES RECEIVED June 29/73

DATE REPORTS MAILED July 4/73

ANALYST Dean Jeff

ACME ANALYTICAL LABORATORIES LTD.

Assaying & Trace Analysis
6455 Laurel St., Burnaby 2, B.C.

Tel: 299 5242

FOX GEOLOGICAL CONSULTANTS LTD.

827 SICAMORE DR.
KAMLOOPS, B.C.

File No. 2344

ANALYSES CERTIFICATE

Type of Samples Soils

Disposition 1 year

No.	Sample	Mo	Cu	Ni	Zn	Au						No.
01	73SLS-558	1	33	34	84							01
02	559	1	35	34	82	ND						02
03	560	3	37	52	100							03
04	561	1	24	42	215	ND						04
05	562	1	20	22	82							05
06	563	1	39	48	310	.02						06
07	564	1	60	60	130							07
08	565	1	10	24	140	ND						08
09	566	1	40	42	140							09
10	567	1	24	24	126	ND						10
11	568	1	56	36	126							11
12	569	1	42	48	104	ND						12
13	570	1	41	32	80							13
14	571	2	82	52	140	ND						14
15	572	1	54	52	108							15
16	573	1	15	22	74	ND						16
17	574	1	36	40	80							17
18	575	3	78	52	48	ND						18
19	576	1	25	94	88							19
20	577	1	40	50	48	ND						20
21	578	1	42	38	64							21
22	579	1	22	44	60	ND						22
23	580	1	54	68	82							23
24	581	1	68	92	108	.03						24
25	582	1	35	72	124							25
26	583	2	232	88	86	ND						26
27	584	1	28	32	84							27
28	585	1	20	26	68	ND						28
29	586	1	96	54	80							29
30	587	1	122	62	124	ND						30
31	588	2	46	40	112							31
32	589	1	43	48	112	ND						32
33	590	1	25	40	132							33
34	591	1	39	54	108	ND						34
35	592	1	36	64	128							35
36	593	2	268	94	120	ND						36
37	594	1	80	54	106							37
38	595	1	54	38	126	ND						38
39	73SLS-596	1	215	56	78							39
40												40

All reports are the confidential property of clients.

DATE SAMPLES RECEIVED June 29/73
 DATE REPORTS MAILED July 4/73
 ANALYST Dean Joyce

ACME ANALYTICAL LABORATORIES LTD.

Assaying & Trace Analysis
6455 Laurel St., Burnaby 2, B.C.

Tel: 299-5242

TO _____

FOX GEOLOGICAL CONSULTANTS LTD.
827 S. CAMORE DR.
KAMLOOPS, B.C.

File No. 2344

Type of Samples Soils

Disposition 1 year

ANALYSES CERTIFICATE

No.	Sample	Mo	Cu	Ni	Zn	Au						No.
01	73SLS-597	1	76	40	138	.01						01
02	598	2	248	70	90							02
03	599	1	232	60	62	.01						03
04	600	3	200	72	52							04
05	601	2	92	72	54	ND						05
06	602	1	106	68	126							06
07	603	1	82	52	124	.02						07
08	604	1	78	34	52							08
09	605	1	148	46	66	ND						09
10	606	1	38	58	120							10
11	607	3	1420	190	158	.01						11
12	608	1	285	50	92							12
13	609	1	96	80	146	ND						13
14	610	1	34	68	74							14
15	611	1	180	80	120	.01						15
16	612	2	92	88	146							16
17	613	2	39	46	146	ND						17
18	614	1	17	30	158							18
19	615	1	34	50	138	ND						19
20	616	1	48	30	130							20
21	617	1	32	28	132	ND						21
22	618	1	37	32	128							22
23	619	1	40	44	92	ND						23
24	620	1	42	34	90							24
25	621	1	32	26	90	ND						25
26	622	1	30	16	138							26
27	623	2	28	20	158	ND						27
28	624	1	10	16	78							28
29	625	1	13	26	144	ND						29
30	626	1	10	26	158							30
31	627	2	19	38	68	ND						31
32	73SLS-628	1	28	44	68							32
33												33
34	73SLS-511	1	104	66	82	.01						34
35	512	2	34	56	162							35
36	73SLS-513	2	68	52	92	ND						36
37												37
38												38
39												39
40												40

All reports are the confidential property of clients.

DATE SAMPLES RECEIVED June 29/73
DATE REPORTS MAILED July 4/73
ANALYST Dean Long

ACME ANALYTICAL LABORATORIES LTD.

Assaying & Trace Analysis
6455 Laurel St., Burnaby 2, B.C.

Tel: 299-5242

TO _____

FOX GEOLOGICAL CONSULTANTS LTD.

827 ST. CAMORE DR.
KAMLOOPS, B.C.

File No. 2410

Type of Samples Rocks

Disposition 1 year

ANALYSES CERTIFICATE

No.	Sample	Mo	Cu	Ni	Zn	Au						No.
01	73SLR 716	1	170	60	78	ND						01
02	717	1	88	50	62	ND						02
03	718	1	139	56	72	ND						03
04	719	4	92	98	54	ND						04
05	720	1	116	46	68	ND						05
06	721	1	132	38	50	ND						06
07	722	1	46	35	44	ND						07
08	723	1	22	78	72	ND						08
09	724	1	33	62	50	ND						09
10	725	1	94	50	74	ND						10
11	726	1	155	64	72	ND						11
12	727	1	68	56	80	ND						12
13	728	1	52	80	78	ND						13
14	729	4	96	130	34	ND						14
15	730	2	25	95	16	ND						15
16	731	2	64	195	34	ND						16
17	732	1	17	84	24	ND						17
18	733	1	22	118	46	ND						18
19	734	1	20	126	24	ND						19
20	735	1	172	195	50	ND						20
21	736	1	30	64	26	ND						21
22	737	1	10	108	30	ND						22
23	738	3	15	124	32	ND						23
24	739	1	62	44	44	ND						24
25	740	1	170	52	44	ND						25
26	741	1	50	34	42	ND						26
27	742	1	89	90	30	ND						27
28	743	1	160	51	24	ND						28
29	744	1	13	105	28	ND						29
30	745	1	130	56	28	ND						30
31	746	1	9	57	70	.04						31
32	747	1	131	62	70	ND						32
33	73SLR 748	2	94	56	56	ND						33
34												34
35												35
36												36
37												37
38												38
39												39
40												40

All reports are the confidential property of clients.

DATE SAMPLES RECEIVED July 18/73

DATE REPORTS MAILED July 24/73

ANALYST Dean Toys

ACME ANALYTICAL LABORATORIES LTD.

Assaying & Trace Analysis
6455 Laurel St., Burnaby 2, B.C.

Tel: 299-5242

TO _____

FOX GEOLOGICAL CONSULTANTS LTD.

827 Sycamore Dr.
Kamloops, B.C.

File No. 2344

ANALYSES CERTIFICATE

Type of Samples Rocks

Disposition 1 year

6

No.	Sample	Mo	Cu	Ni	Zn	Au						No.
01	73DSR-308	2	3250	94	38	.52						01
02	309	2	4600	118	54	2.80						02
03	310	1	3600	118	34	.35						03
04	311	1	3400	90	36	.56						04
05	312	2	3200	174	106	.26						05
06	313	8	880	70	32	.11						06
07	314	9	605	64	32	.09						07
08	315	2	1280	56	32	.13						08
09	316	24	1950	78	28	.37						09
10	317	2	9400	210	64	.80						10
11	318	8	720	120	84	.04						11
12	319	3	420	130	54	.10						12
13	320	1	705	270	120	.20						13
14	321	2	1940	160	110	.15						14
15	322	26	2280	250	82	2.65						15
16	323	3	1120	114	74	1.26						16
17	324	2	780	172	62	.22						17
18	325	1	2800	470	170	.39						18
19	325A	1	765	132	48	.10						19
20	326	8	480	110	84	.08						20
21	327	7	405	88	44	.14						21
22	328	1	445	80	88	.10						22
23	329	2	450	68	52	.03						23
24	330	6	920	54	78	.09						24
25	331	2	1080	54	82	.13						25
26	332	2	148	48	54	ND						26
27	333	9	150	56	32	ND						27
28	334	7	118	48	74	.03						28
29	73DSR-335	6	525	66	30	.01						29
30												30
31												31
32												32
33												33
34												34
35												35
36												36
37												37
38												38
39												39
40												40

All reports are the confidential property of clients.

DATE SAMPLES RECEIVED June 29/73

DATE REPORTS MAILED July 4/73

ANALYST Dean Joffe

ACME ANALYTICAL LABORATORIES LTD.

Assaying & Trace Analysis
6455 Laurel St., Burnaby 2, B.C.

Tel: 290 5242

TO _____

FOX GEOLOGICAL CONSULTANTS LTD.

827 SUCAMORE DR.
KAMLOOPS, B.C.

File No. 2410

Type of Samples Soils

Disposition 1 year

ANALYSES CERTIFICATE

1

No.	Sample	Cu	Ni	Zn	Au							No.
01	73DSS 381	36	32	106	ND							01
02	382	22	30	50	.02							02
03	383	16	20	96	ND							03
04	384	36	35	80	ND							04
05	385	80	44	52	.01							05
06	386	28	25	55	ND							06
07	387	37	28	62	ND							07
08	388	29	26	82	.01							08
09	389	36	25	84	.02							09
10	390	118	45	100	.06							10
11	391	119	37	74	.03							11
12	392	110	35	130	ND							12
13	393	260	54	108	.05							13
14	394	71	37	76	.07							14
15	395	15	16	50	.02							15
16	396	95	53	50	ND							16
17	397	148	70	60	.12							17
18	398	450	110	42	.37							18
19	399	76	72	88	ND							19
20	400	40	34	90	ND							20
21	401A	160	30	72	.03							21
22	401B	62	25	68	.01							22
23	402	87	28	74	.02							23
24	404	61	27	84	ND							24
25	405	172	36	76	.04							25
26	406	82	40	90	.02							26
27	407	12	15	60	ND							27
28	408	190	30	40	.16							28
29	409	81	17	90	.01							29
30	410	19	28	90	ND							30
31	411	30	30	102	ND							31
32	412	168	72	96	.01							32
33	413	410	72	100	.57							33
34	414	1900	380	70	.10							34
35	415	210	520	162	.01							35
36	416	148	40	100	ND							36
37	417	16	24	100	ND							37
38	418	54	40	114	.01							38
39	73DSS 419	11	16	68	ND							39
40												40

All reports are the confidential property of clients.

DATE SAMPLES RECEIVED July 18/73
 DATE REPORTS MAILED July 24/73
 ANALYST Dean Jeff

ACME ANALYTICAL LABORATORIES LTD.

Assaying & Trace Analysis
6455 Laurel St., Burnaby 2, B.C.

Tel: 299-5242

TO _____

File No. 2410

OX GEOLOGICAL CONSULTANTS LTD.
827 Sycamore Dr.
Kamloops, B.C.

ANALYSES CERTIFICATE

Type of Samples Soils

Disposition 1 year

No.	Sample	Cu	Ni	Zn	Au					No.
01	73DSS 420	19	36	96	.01					01
02	421	720	69	74	3.20					02
03	422	37	47	80	.02					03
04	423	30	63	140	ND					04
05	424	19	41	118	ND					05
06	425	96	52	78	ND					06
07	426	43	37	92	ND					07
08	427	42	37	64	.01					08
09	428	108	46	60	ND					09
10	429	53	66	62	ND					10
11	430	132	57	74	.02					11
12	431	54	51	60	.03					12
13	432	56	33	78	.01					13
14	433	48	26	64	.01					14
15	434	90	60	110	ND					15
16	435	58	23	64	ND					16
17	436	116	44	92	.04					17
18	437	39	36	110	ND					18
19	438	38	31	150	ND					19
20	439	54	44	92	ND					20
21	440	67	33	98	ND					21
22	441	57	37	60	.02					22
23	442	72	44	80	ND					23
24	443	74	47	58	.03					24
25	444	98	58	100	ND					25
26	445	91	57	60	.01					26
27	446	130	58	86	.03					27
28	447	146	58	120	.01					28
29	448	137	52	92	.01					29
30	449	82	40	58	ND					30
31	450	108	41	48	ND					31
32	451	3900	50	34	.01					32
33	452	330	50	52	.09					33
34	453	79	47	110	ND					34
35	454	44	32	120	ND					35
36	455	60	25	136	ND					36
37	456	49	27	155	ND					37
38	457	28	29	84	ND					38
39	73DSS 458	40	48	78	ND					39
40										40

All reports are the confidential property of clients.
ND - None Detected

DATE SAMPLES RECEIVED July 18/73
DATE REPORTS MAILED July 24/73
ANALYST Dean Joffe

ACME ANALYTICAL LABORATORIES LTD.

Assaying & Trace Analysis
6455 Laurel St., Burnaby 2, B.C.

Tel: 299 5242

TO _____

FOX GEOLOGICAL CONSULTANTS LTD.

827 STAMORE DR.
KAMLOOPS, B.C.

File No. 2410

ANALYSES CERTIFICATE

Type of Samples Soils

Disposition 1 year

3

No.	Sample	Cu	Ni	Zn	Au							No.
01	73DSS 459	22	31	80	ND							01
02	460	14	26	82	ND							02
03	461	31	37	78	ND							03
04	462	5	11	46	ND							04
05	463	28	20	92	ND							05
06	464	460	96	182	.02							06
07	465	24	28	92	ND							07
08	466	64	49	132	ND							08
09	467	30	28	114	ND							09
10	468	39	34	120	ND							10
11	469	28	34	72	ND							11
12	470	34	35	70	ND							12
13	471	132	30	74	ND							13
14	472	15	24	140	ND							14
15	473	16	32	122	ND							15
16	474	28	38	70	ND							16
17	475	23	60	132	ND							17
18	476	225	300	70	ND							18
19	477	32	140	68	ND							19
20	478	12	190	92	ND							20
21	479	128	37	110	ND							21
22	480	17	27	110	ND							22
23	481	20	15	72	ND							23
24	482	24	19	82	ND							24
25	483	36	30	80	ND							25
26	484	65	34	64	.06							26
27	485	46	30	68	ND							27
28	486	145	54	94	ND							28
29	487	28	52	76	ND							29
30	488	34	44	82	ND							30
31	489	22	70	92	ND							31
32	490	37	56	92	ND							32
33	491	19	30	92	ND							33
34	492	33	35	106	ND							34
35	493	158	17	64	.28							35
36	494	70	48	120	.28							36
37	495	14	30	76	.15							37
38	496	16	26	60	.02							38
39	73DSS 497	56	43	70	ND							39
40												40

All reports are the confidential property of clients.

DATE SAMPLES RECEIVED July 18/73
 DATE REPORTS MAILED July 24/73
 ANALYST Dean Joff

ACME ANALYTICAL LABORATORIES LTD.

Assaying & Trace Analysis
6455 Laurel St., Burnaby 2, B.C.

Tel: 290 5242

FOX GEOLOGICAL CONSULTANTS LTD.

827 SICAMORE DR.
KAMLOOPS, B.C.

File No. 2410

Type of Samples Soils

Disposition 1 year

ANALYSES CERTIFICATE

No.	Sample	Cu	Ni	Zn	Au						No.
4 01	73DSS 498	14	17	64	ND						01
02	499	32	34	85	ND						02
03	500	17	26	100	ND						03
04	501	19	27	84	ND						04
05	502	22	27	76	ND						05
06	503	23	36	94	ND						06
07	504	28	40	106	ND						07
08	505	310	132	142	ND						08
09	506	86	25	90	ND						09
10	507	26	38	126	ND						10
11	508	37	36	98	ND						11
12	73DSS 509	290	86	132	ND						12
13											13
14											14
15											15
16											16
17	D73AS 11	21	19	150	ND						17
18	12	126	57	94	ND						18
19	13	47	28	94	ND						19
20	14	57	32	90	ND						20
21	15	33	25	114	ND						21
22	16	26	24	126	ND						22
23	17	20	21	160	ND						23
24	D73AS 18	18	20	140	ND						24
25											25
26											26
27											27
28											28
29											29
30											30
31											31
32											32
33											33
34											34
35											35
36											36
37											37
38											38
39											39
40											40

All reports are the confidential property of clients.

DATE SAMPLES RECEIVED July 18/73

DATE REPORTS MAILED July 24/73

ANALYST Deant Jap

ACME ANALYTICAL LABORATORIES LTD.

Assaying & Trace Analysis
6455 Laurel St., Burnaby 2, B.C.

Tel: 299-5242

TO _____

File No. 2410

FOX GEOLOGICAL CONSULTANTS LTD.
827 SICAMORE DR.
KAMLOOPS, B.C.

ANALYSES CERTIFICATE

Type of Samples Rocks

Disposition 1 year

No.	Sample	Cu	Ni	Zn	Au							No.
01	73DAR 510	4500	48	26	1.14							01
02	511	132	96	18	.02							02
03	512	2200	155	74	.08							03
04	513	1000	160	340	.01							04
05	514	720	54	52	.15							05
06	515	98	116	28	ND							06
07	73DAR 516	290	58	30	.02							07
08												08
09												09
10												10
11												11
12												12
13												13
14												14
15												15
16												16
17												17
18												18
19												19
20												20
21												21
22												22
23												23
24												24
25												25
26												26
27												27
28												28
29												29
30												30
31												31
32												32
33												33
34												34
35												35
36												36
37												37
38												38
39												39
40												40

All reports are the confidential property of clients.

DATE SAMPLES RECEIVED July 18/73

DATE REPORTS MAILED July 24/73

ANALYST Dean Jeff

ACME ANALYTICAL LABORATORIES LTD.

Assaying & Trace Analysis
6455 Laurel St., Burnaby 2, B.C.

Tel: 299-5242

TO _____

FOX GEOLOGICAL CONSULTANTS LTD.

827 SICAMORE DR.
KAMLOOPS, B.C.

ANALYSES CERTIFICATE

File No. 2379

Type of Samples Soils

Disposition 1 year

No.	Sample	Cu	Ni	Zn	Ag	Au						No.
01	73DSS-371	1850	60	80	1.6	1.10						01
02	372	640	106	62	.8	.07						02
03	373	510	72	94	.5	.15						03
04	374	44	52	152	.3	.01						04
05	375	42	56	136	.3	.01						05
06	376	52	46	122	.4	ND						06
07	377	88	52	108	.2	ND						07
08	378	670	146	124	.4	.03						08
09	379	148	62	172	.5	ND						09
10	73DSS-380	670	54	92	.5	.03						10
11												11
12												12
13												13
14												14
15												15
16												16
17												17
18												18
19												19
20												20
21												21
22												22
23												23
24												24
25												25
26												26
27												27
28												28
29												29
30												30
31												31
32												32
33												33
34												34
35												35
36												36
37												37
38												38
39												39
40												40

All reports are the confidential property of clients.

DATE SAMPLES RECEIVED July 11/73
 DATE REPORTS MAILED July 13/73
 ANALYST [Signature]

ACME ANALYTICAL LABORATORIES LTD.

Assaying & Trace Analysis
6455 Laurel St., Burnaby 2, B.C.

Tel: 299-5242

FOX GEOLOGICAL CONSULTANTS LTD.
827 STAMORE DR.
KAMLOOPS, B.C.

File No. 2379
Type of Samples Soils
Disposition 1 year

ANALYSES CERTIFICATE

No.	Sample	Cu	Ni	Zn	Ag	Au					No.
01	73DSS-336	60	64	160	.5	ND					01
02	337	168	60	138	.5	ND					02
03	338	30	40	108	.2	ND					03
04	339	60	60	100	.2	ND					04
05	340	112	78	134	.4	.01					05
06	341	194	84	194	.3	.10					06
07	342	104	102	132	.6	.04					07
08	343	225	94	116	.5	.15					08
09	344	66	40	94	.5	ND					09
10	345	26	42	92	.3	ND					10
11	346	68	62	78	.3	ND					11
12	347	40	42	106	.3	ND					12
13	348	146	70	120	.2	.02					13
14	349	20	40	122	.2	ND					14
15	350	72	58	118	.4	ND					15
16	351	56	46	72	.2	ND					16
17	352	1200	106	88	.4	.05					17
18	353	760	106	112	.6	.12					18
19	354	480	88	144	.5	.10					19
20	355	192	64	80	.4	.01					20
21	356	110	52	78	.4	.07					21
22	357	760	86	68	.4	.01					22
23	358	690	90	56	.4	.04					23
24	359	510	84	42	.4	.01					24
25	360	850	130	58	.4	.09					25
26	361	4300	128	92	6.7	4.04					26
27	362	1.6%	210	76	19.4	13.00					27
28	363	1.5%	152	88	2.8	2.42					28
29	364	1.1%	144	78	1.3	.92					29
30	365	6000	140	84	2.4	1.80					30
31	366	5000	160	82	1.6	1.16					31
32	367	5300	136	92	1.9	1.30					32
33	368	64	64	128	.5	.01					33
34	369	144	74	122	.6	ND					34
35	369A	620	94	48	.5	.04					35
36	73DSS-370	570	170	162	.4	ND					36
37											37
38											38
39											39
40											40

All reports are the confidential property of clients.
73DSS-362 - Au - 13.00

DATE SAMPLES RECEIVED July 11/73
DATE REPORTS MAILED July 13/73
ANALYST [Signature]

ACME ANALYTICAL LABORATORIES LTD.

Assaying & Trace Analysis
6455 Laurel St., Burnaby 2, B.C.

Tel: 299-5242

FOX GEOLOGICAL CONSULTANTS LTD.

827 SICKAMORE DR.
KAMLOOPS, B.C.

File No. 2339

ANALYSES CERTIFICATE

Type of Samples Soil

Disposition 1 year

No.	Sample	Mo	Cu	Ni	Zn	Au						No.
01	73SMS-65	5	230	28	142							01
02												02
03												03
04												04
05												05
06												06
07												07
08												08
09												09
10												10
11												11
12												12
13												13
14												14
15												15
16												16
17												17
18												18
19												19
20												20
21												21
22												22
23												23
24												24
25												25
26												26
27												27
28												28
29												29
30												30
31												31
32												32
33												33
34												34
35												35
36												36
37												37
38												38
39												39
40												40

All reports are the confidential property of clients.

DATE SAMPLES RECEIVED June 28/73

DATE REPORTS MAILED June 30/73

ANALYST Alan Sapp

PERSONNEL

P.E. Fox, PhD., P.Eng. Supervisor, geologist-in-charge.
827 Sycamore Dr., Kamloops, B.C. (\$100/day)

D.G. Colley, line cutter, magnetometer operator.
4359 Harder Road, Victoria, B.C. (\$25/day)


B. Bried, line cutter,
2135 Westsyde Rd, Kamloops, B.C. (\$25/day)

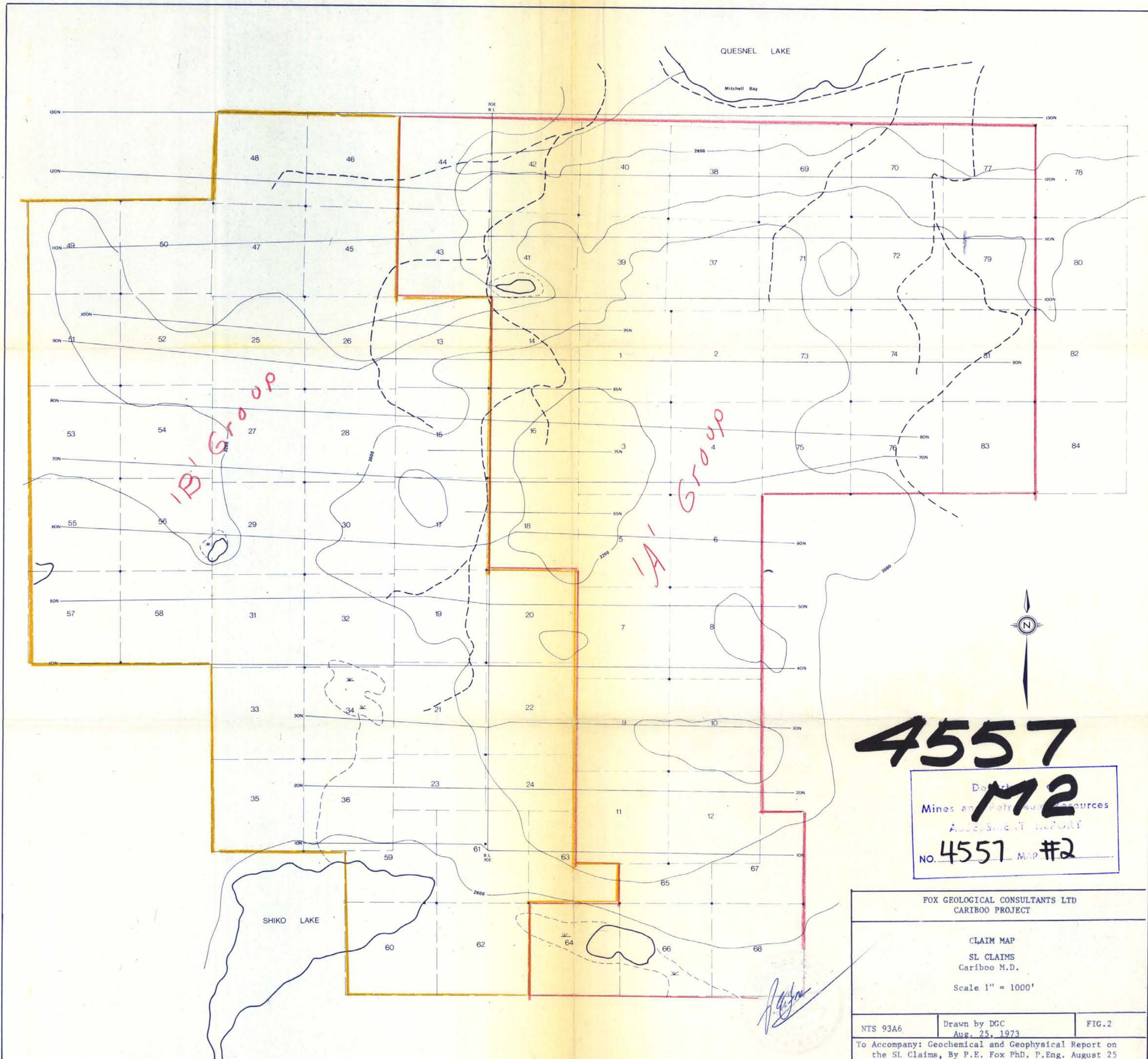
M. Legros, line cutter, sampler.
1260 Bedwell St. Vancouver, B.C. (\$25/day)

J.W. Morton, B.Sc., line cutter, geologist, sampler
3529 West 22nd Ave., Vancouver, B.C. (\$32/day)

CONTRACT PERSONNEL

Amex Exploration Services Ltd., two men for line cutting work by
contract. 204-635 Victoria St. Kamloops, B.C.

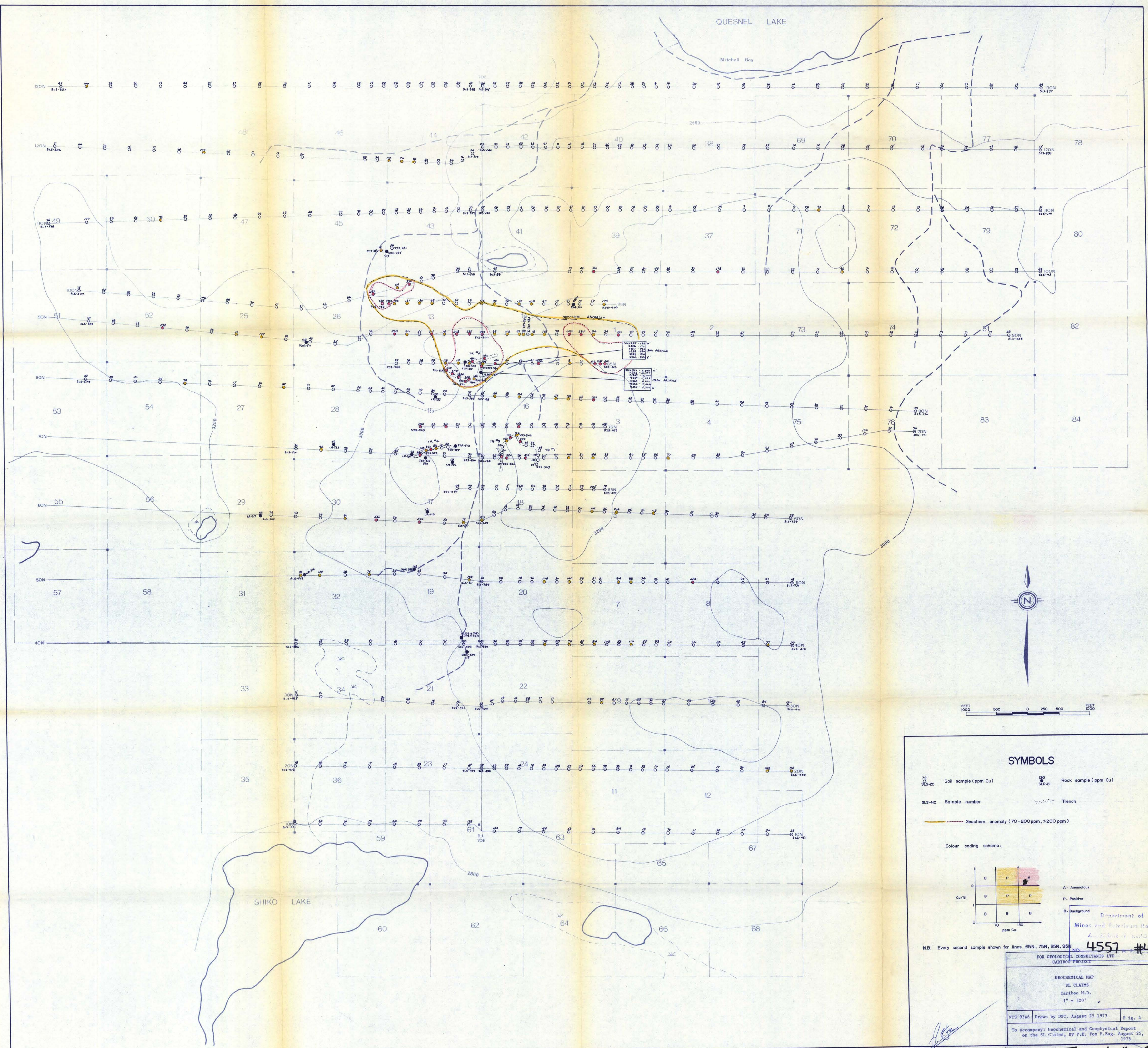

.....
P.E. Fox, PhD. P.Eng. (B.C.)
August 25, 1973



4557

Mines and Petroleum Resources
ASSESSMENT REPORT
NO. 4557 MAP #2

FOX GEOLOGICAL CONSULTANTS LTD CARIBOO PROJECT		
CLAIM MAP SL CLAIMS Cariboo M.D. Scale 1" = 1000'		
NTS 93A6	Drawn by DGC Aug. 25, 1973	FIG. 2
To Accompany: Geochemical and Geophysical Report on the SL Claims, By P.E. Fox Ph.D. P.Eng. August 25 1973		



SYMBOLS

<p>75 SLS-20 Soil sample (ppm Cu)</p> <p>SLS-40 Sample number</p> <p>— Geochem anomaly (70-200ppm, >200 ppm)</p>	<p>100 SLS-21 Rock sample (ppm Cu)</p> <p>--- Trench</p>
---	--

Colour coding scheme:

B	P	A
B	P	P
B	B	B

Cu/Ni ppm Cu

A - Anomalous
P - Positive
B - Background

Department of
Mines and Petroleum Resources
ANALYTICAL REPORT

N.B. Every second sample shown for lines 65N, 75N, 85N, 95N

4557 #1

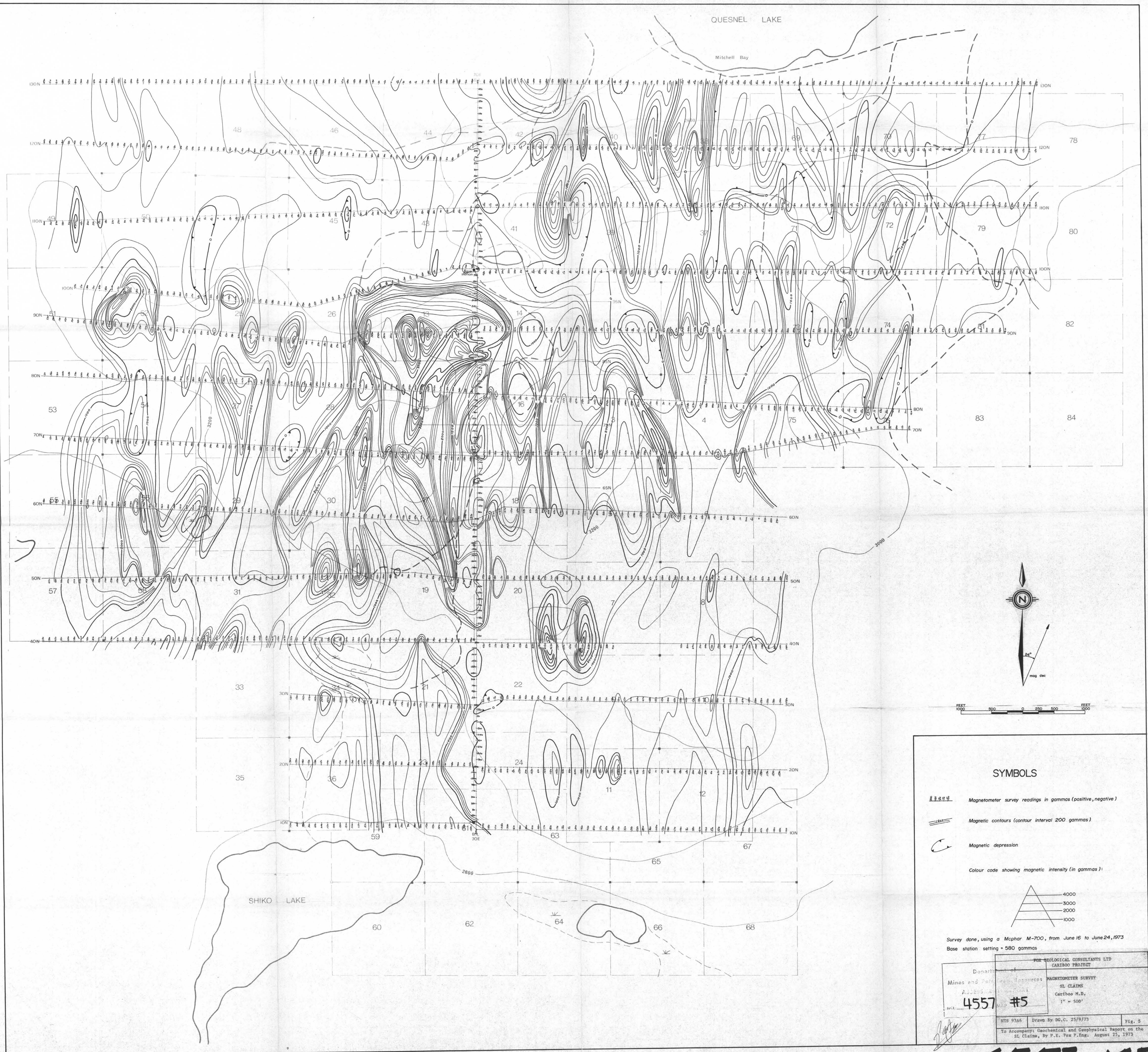
FOX GEOLOGICAL CONSULTANTS LTD
CARIBOO PROJECT

GEOCHEMICAL MAP
SI CLAIMS
Cariboo M.D.
1" = 500'

NYS 93A6	Drawn by DGC, August 25 1973	Fig. 4
----------	------------------------------	--------

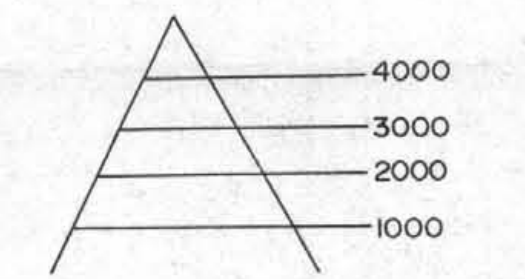
To accompany: Geochemical and Geophysical Report
on the SI Claims, by F.R. Fox P.Eng. August 25,
1973

4557-M4



SYMBOLS

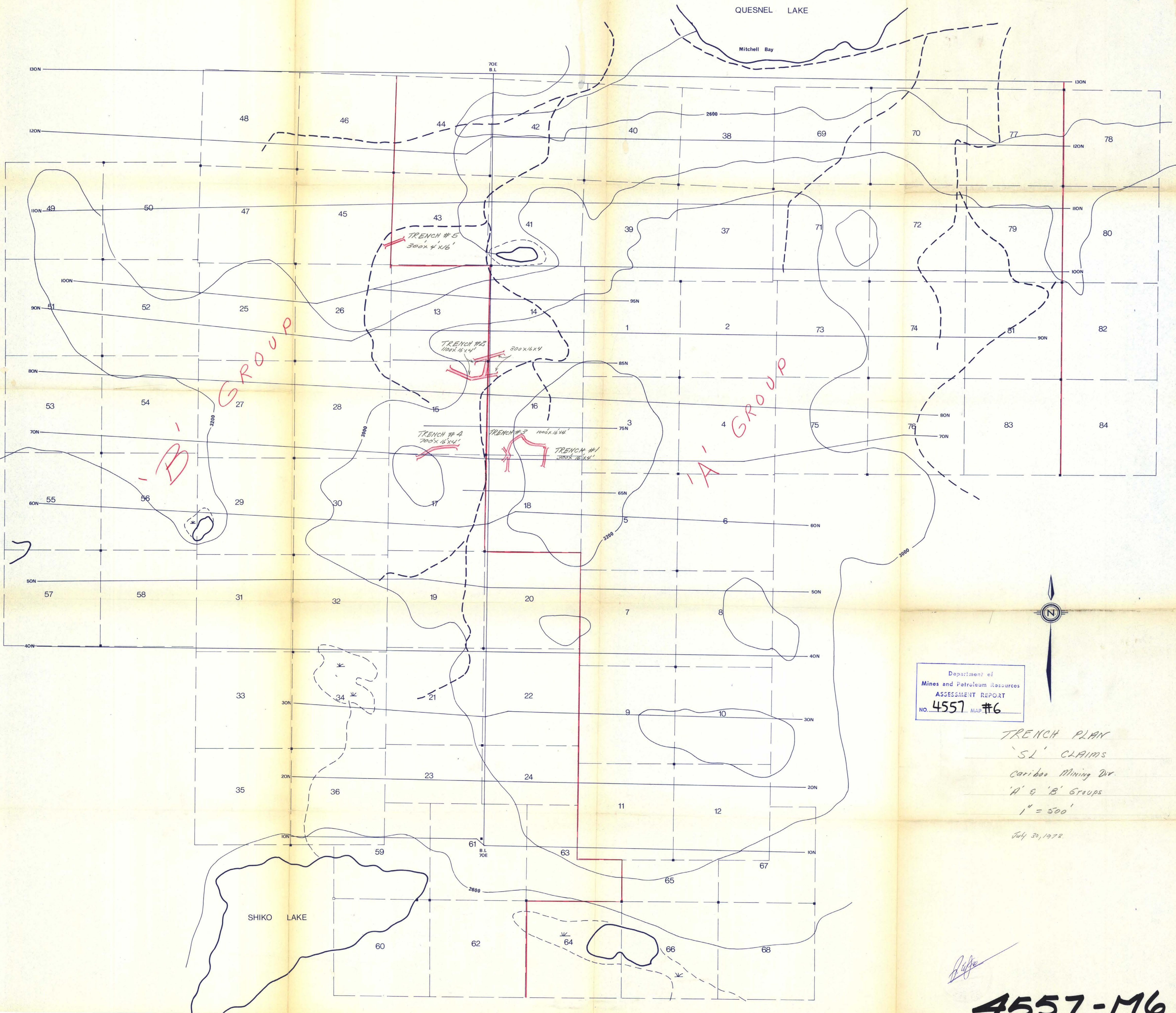
- Magnetometer survey readings in gammas (positive, negative)
- Magnetic contours (contour interval 200 gammas)
- Magnetic depression
- Colour code showing magnetic intensity (in gammas):



Survey done, using a Mcphar M-700, from June 16 to June 24, 1973
 Base station setting = 580 gammas

Department of Mines and Technical Surveys		FOX GEOLOGICAL CONSULTANTS LTD CARIBOO PROJECT	
4557		#5	
NTS 93A6		Drawn By DG.C. 25/9/73	
To Accompany: Geochemical and Geophysical Report on the St. Claims, by P.E. Fox P.Eng. August 25, 1973		Fig. 5	

4557-M5



Department of
 Mines and Petroleum Resources
 ASSESSMENT REPORT
 NO. 4557 MAP #6



TRENCH PLAN
 'SL' CLAIMS
 Cariboo Mining Div.
 'A' & 'B' Groups
 1" = 500'
 July 30, 1973

[Handwritten signature]

4557-M6